

Northwest Pipeline Corp Non Bond Claim: Task 2 - Plug and Abandon, Flowline Abandonment, Equipment Salvage - 325208 067-05620

McCulloch #4  
Operator Number-64650  
Prepared SRC

FIELD NAME  
FIELD NUMBER

5/2/2025  
Ignacio Blanco  
38300

Notes:  
Spud 09/05/1956

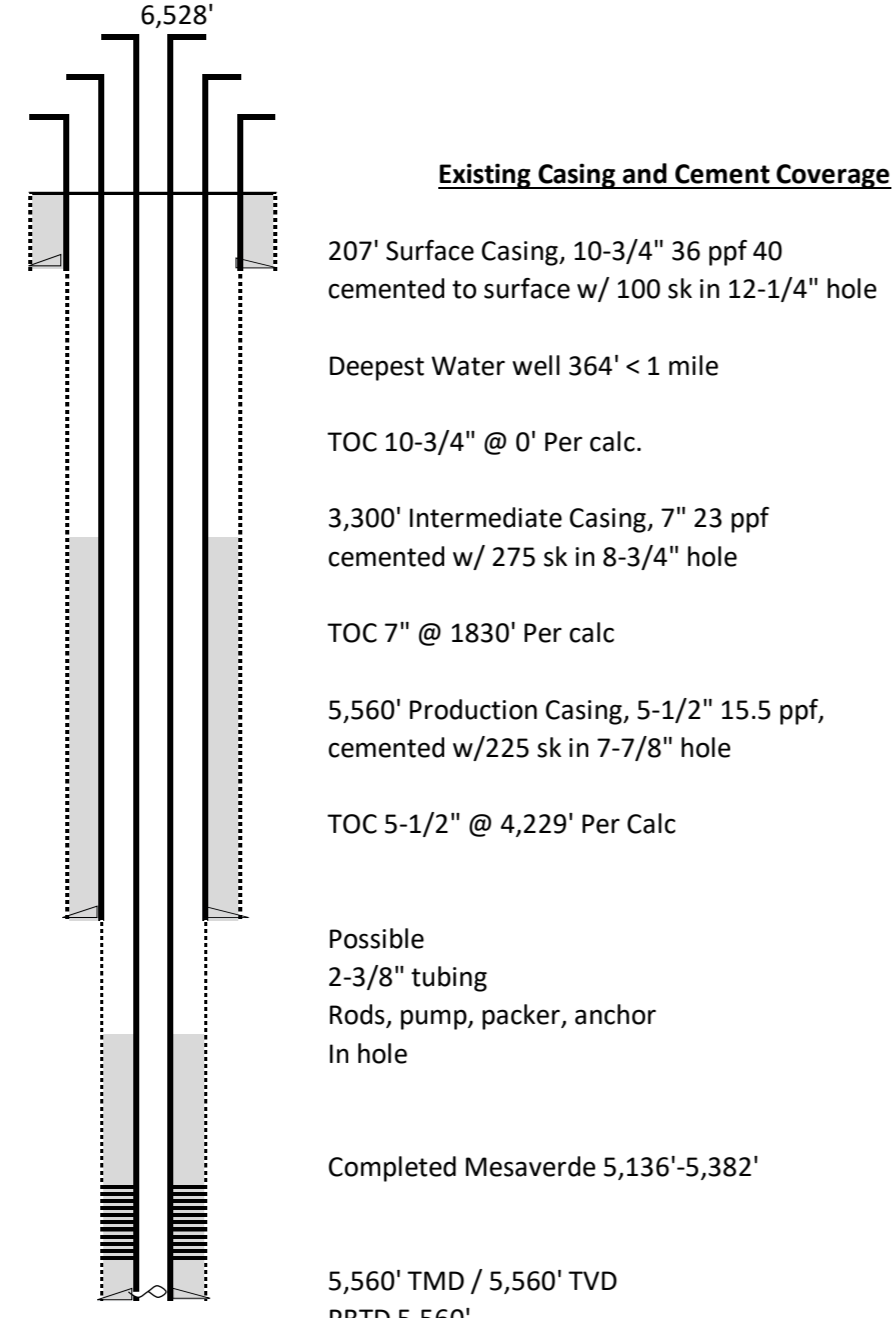
LOCATION

Basin  
Location-Townships  
Location-Ranges  
Elevation

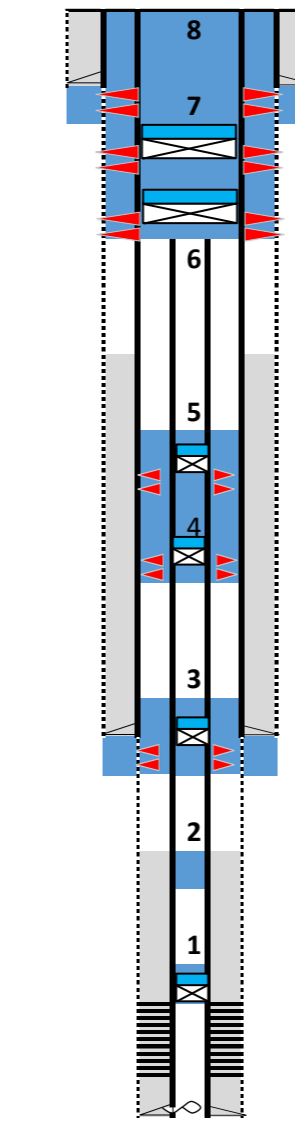
San Jaun  
34N  
10W  
6,528'

Mineral Owner: Fee  
Surface Owner: Fee

Depth	Formation/Member
0'	
1,000'	Estimated Kirtland 900' Estimated Farmington 1,200'
2,000'	Estimated Fruitland 2,200' Estimated Fruitland Coal 2,300'
3,000'	Estimated Pictured Cliffs 2,845' Estimated Lewis 3,130'
4,000'	Estimated Mesaverde 4,590'
5,000'	Estimated Menefee 5,010' Estimated Point Lookout 5,282'
6,000'	Estimated Mancos 5,440'



Depth	Formation/Member
0'	
1,000'	
2,000'	
3,000'	
4,000'	
5,000'	
6,000'	



Space	Hole/Csg	Csg	cf/ft	bbls/ft
Annulus above shoe	7	4.5		
Annulus below shoe	6.25	4.5		
Casing				
Plug #	sk	bbls		
1	15	3.0		
2	15	3.0		
3	25	4.9		
4	25	4.9		
5	25	4.9		
6	45	8.8		
7	45	8.8		
8	140	27.5		
Total	335	65.8		

Units			
Sacks Cement	Length of Plug	Capacity	Yield
15.00	129.1167665	0.1336	1.15

Units			
Sacks Cement	Length of Plug	Capacity	Yield
335.00	1369.53	0.2813	1.15

\*BOP or other mechanical method should be used for well control

Proposed Plug Placement

Fill cement to surface in all annuli w/additional sk as needed  
Cut, cap, and bury per ECMC rules/regulations/guidelines

Surface  
Circulate 140 sk w/ returns to surface  
Establish circulation to surface  
Perf 7" @ 257'

Perform bubble test

Plug 7  
Squeeze 30 sk through w/ 15 sk on top  
Set 7" CIBP @ 472'  
Perf 7" @ 522'

Plug 6  
Squeeze 30 sk through w/ 15 sk on top  
Set 7" CIBP @ 900'  
Perf 7" @ 950'

Run CBL on 7"  
Pressure test 7" to 300 psi  
Cut and pull 5-1/2" @ 1000'

Plug 5  
Squeeze 15 sk through w/ 10 sk on top  
Set 5-1/2 CIBP @ 2,200'  
Perf 5-1/2" @ 2,250'

Plug 4  
Squeeze 15 sk through w/ 10 sk on top  
Set 5-1/2 CIBP @ 2,845'  
Perf 5-1/2" @ 2,895'

Plug 3  
Squeeze 15 sk through w/ 10 sk on top  
Set 5-1/2 CIBP @ 3,300'  
Perf 5-1/2" @ 3,350'

Plug 2  
Pump 15 sk @ 4,640'

Run CBL 5-1/2"  
Pressure test 5-1/2" casing after setting CIBP to 300 psi  
Circulate well clean

Plug 1  
Set 5-1/2" CIBP @ 5,036' w/ 15 sk on top

RIH w/gauge ring & tag existing PBTD  
Remove rods, tubing, tubing anchor/packer/BHA  
Remove any obstructions in the well to reach PBTD  
Kill the well - Do not assume well is dead