

WELL NAME: NORTH CHUTE 31-21, API #: 071-09407, INSP. # 716301566



EVERGREEN
NATURAL RESOURCES LLC
NATURAL RESOURCES USA, INC.
NORTH CHUTE 31-21
API 05-071-09407
NW NE SECTION 21-32S-65W
CR 51
LAT. 37.2482/LONG. -104.67543
EMERGENCY No. 911 or 719-846-7898 (24 Hrs)

WDID 1911474 / Permit # 72723

COC57890A



Network: Sep 26, 2025 at 11:03:50 AM MDT
Local: Sep 26, 2025 at 11:03:50 AM MDT
+37.248274,-104.675743
Las Animas County
Altitude:2233.2meter
Speed:8.6km/h

PHOTO 1: WELL SIGN



Network: Sep 26, 2025 at 11:03:29 AM MDT
Local: Sep 26, 2025 at 11:03:29 AM MDT
+37.248228,-104.67584
Las Animas County
Altitude:2235.1meter
Speed:2.0km/h

PHOTO 2: LOCATION.

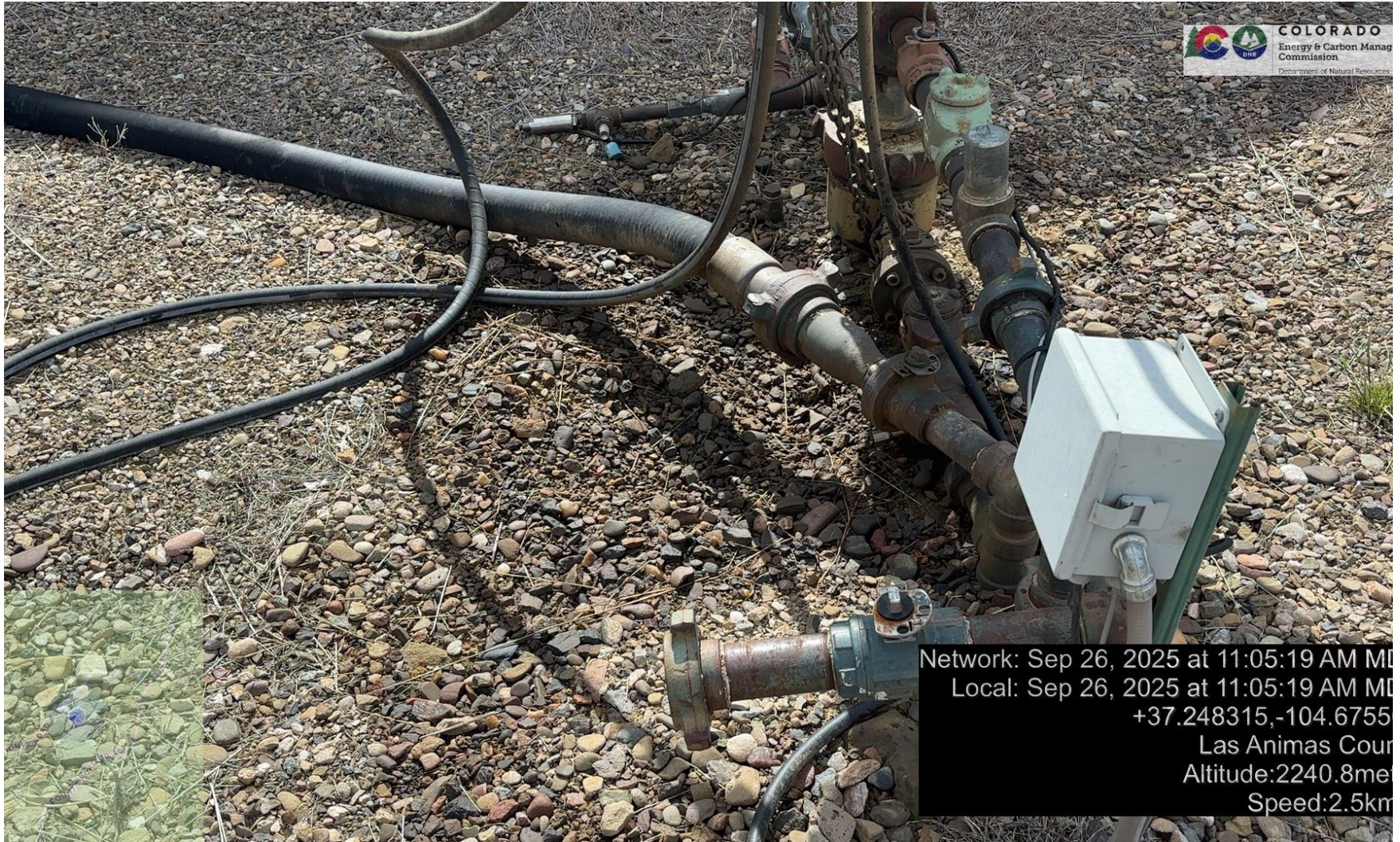


PHOTO 3: AREA OF IMPACTED SOIL NEAR WELLHEAD. Conduct maintenance on equipment, cleanup stained material and review self inspection processes. COMPLY WITH RULE 1002,.(2).D. CA DATE 10-26-2025.

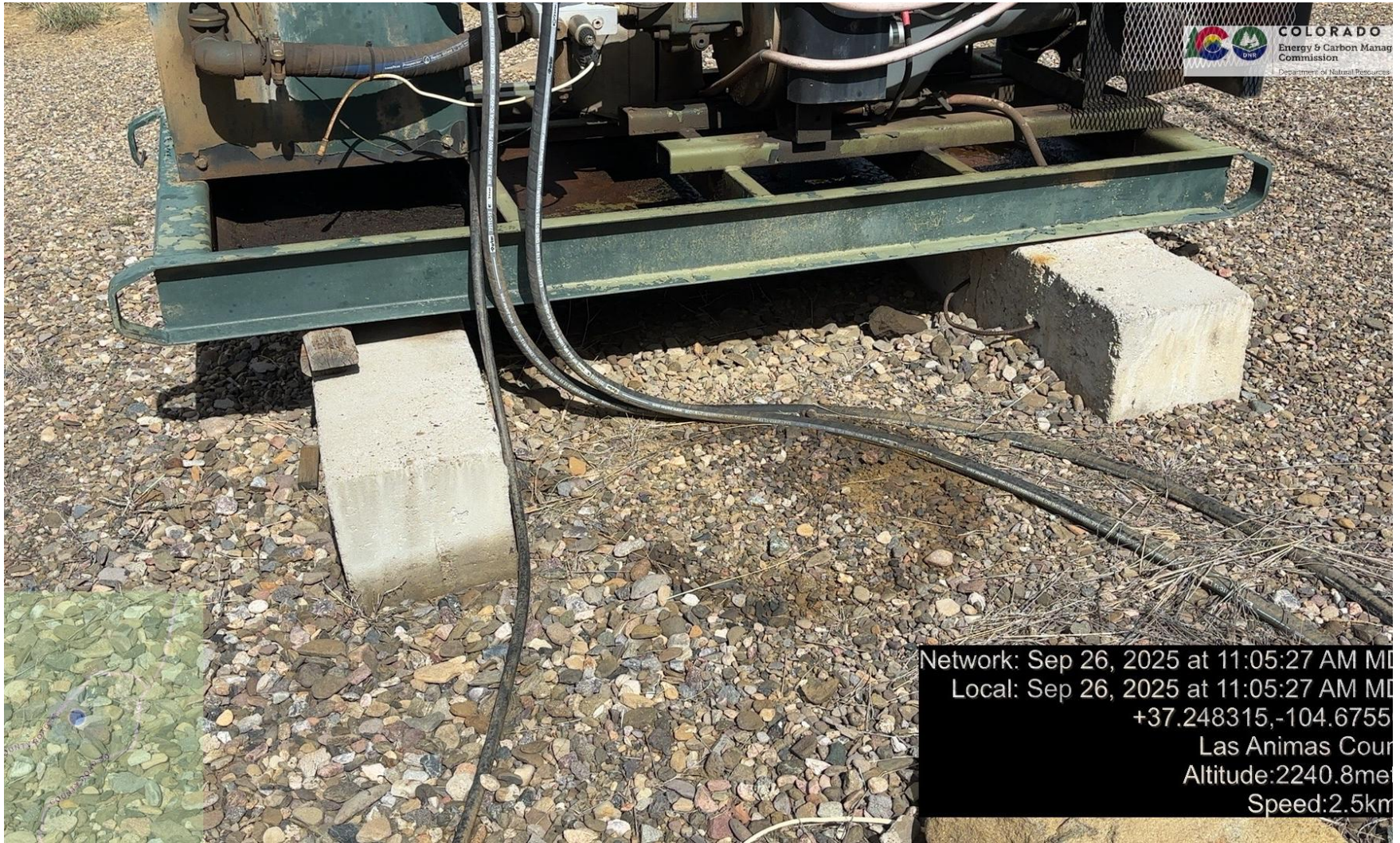


PHOTO 4: AREA OF IMPACTED SOIL NEAR PRIME MOVER. Conduct maintenance on equipment, cleanup stained material and review self inspection processes. COMPLY WITH RULE 1002,(2).D. CA DATE 10-26-2025.