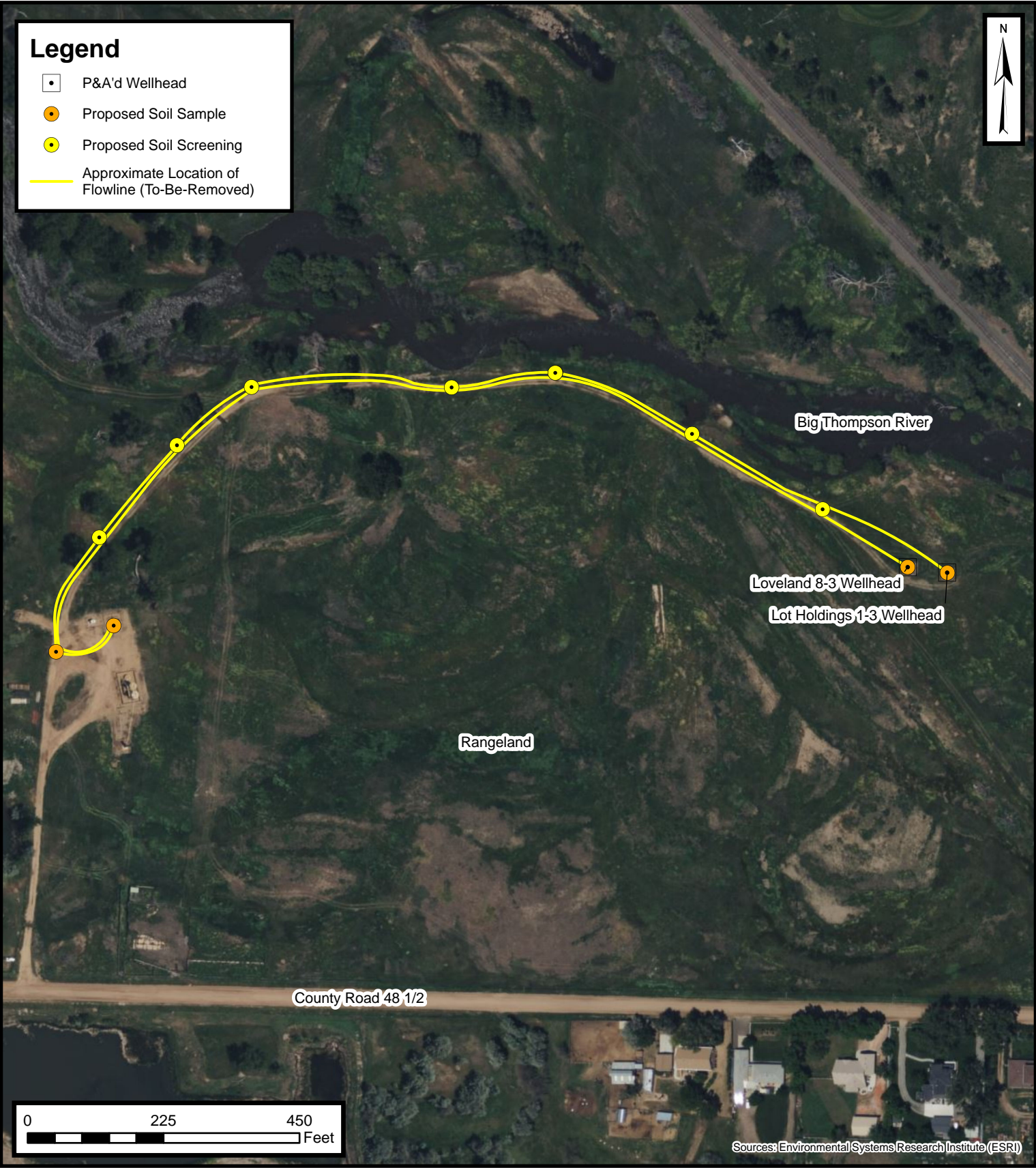
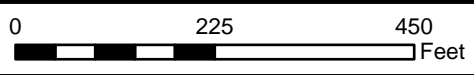


Legend

- P&A'd Wellhead
- Proposed Soil Sample
- Proposed Soil Screening
- Approximate Location of Flowline (To-Be-Removed)



Default Folder: C:\Users\Margan Tai\OneDrive - ENSOLUM, LLC\Ensolium\GIS\0 - Projects\Kerr-McGee Oil & Gas Onshore, LP\09A14171459 - Lot Holdings 1-3 Wellhead



Sources: Environmental Systems Research Institute (ESRI)

Proposed Flowline Excavation and Soil Sampling Locations Map

Lot Holdings 1-3 & Loveland 8-3 Flowlines
Kerr-McGee Oil & Gas Onshore, LP
SENE SEC 3-T4N-R67W
Weld County, CO

Project Number: 09A14171459



FIGURE
3