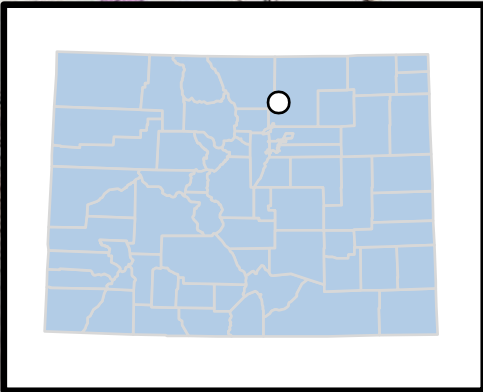
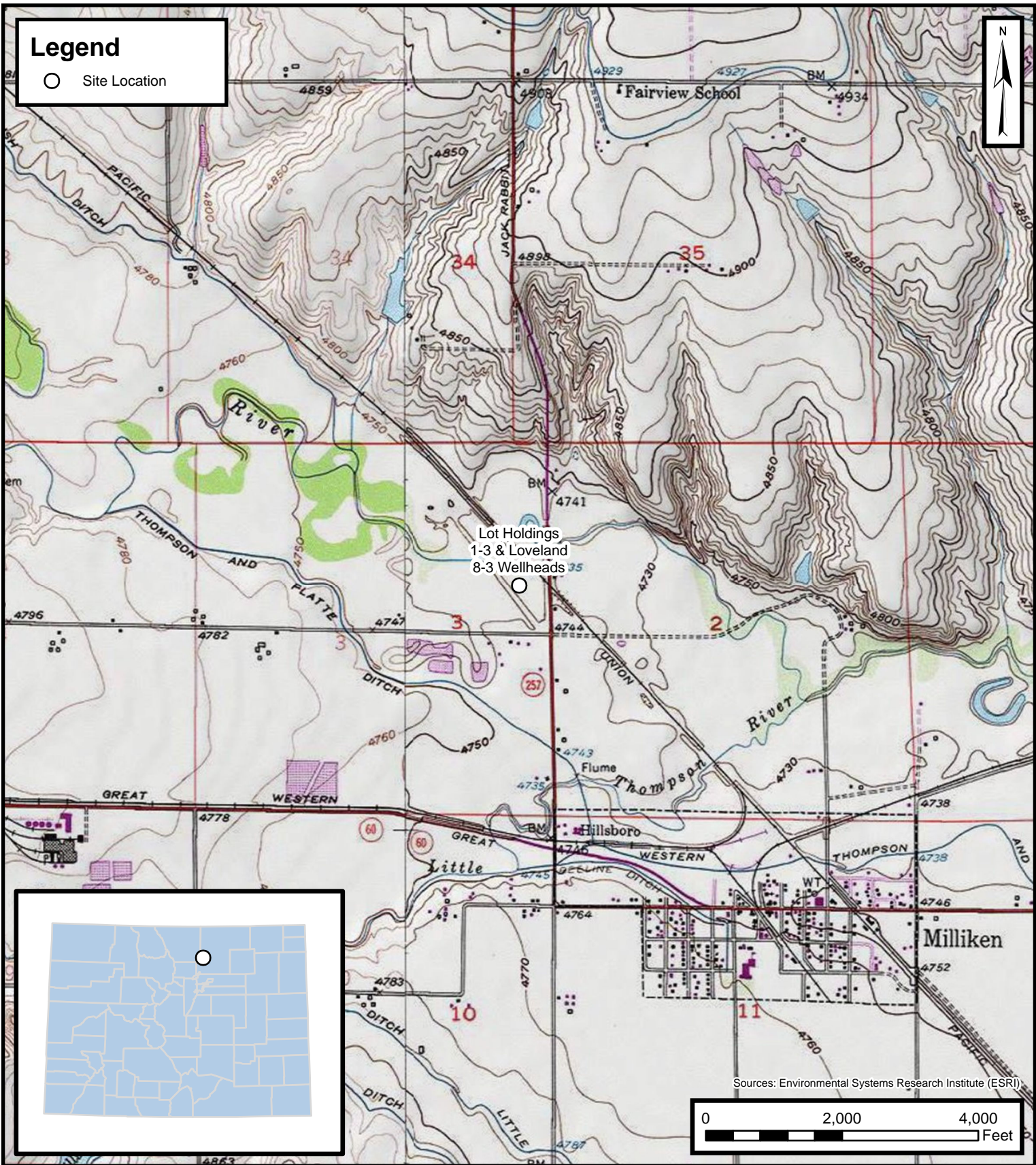


Legend

○ Site Location



Default Folder: C:\Users\Margan.Talbot\OneDrive - ENSOLUM LLC\Ensolium GIS\0 - Projects\Kerr-McGee Oil & Gas Onshore, LP\09A14171459 - Lot Holdings 1-3 Wellhead



Site Location Map

Lot Holdings 1-3 & Loveland 8-3 Wellheads
Kerr-McGee Oil & Gas Onshore, LP
SENE SEC 3-T4N-R67W
Weld County, CO

Project Number: 09A14171459

FIGURE
1