

CRESTONE PEAK RESOURCES

ADAMS COUNTY

SEC 15-T3S-R65W

QUICKSILVER 3-65 16-17-18-13 4AH

OWB

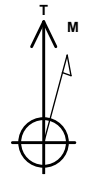
Design: FINAL SURVEY

Standard Survey Report

21 July, 2025

Project: ADAMS COUNTY
 Site: SEC 15-T3S-R65W
 Well: QUICKSILVER 3-65 16-17-18-13 4AH
 Wellbore: OWB
 Design: FINAL SURVEY

PROJECT DETAILS: ADAMS COUNTY
 Geodetic System: US State Plane 1983
 Datum: North American Datum 1983
 Ellipsoid: GRS 1980
 Zone: Colorado Northern Zone
 System Datum: Mean Sea Level



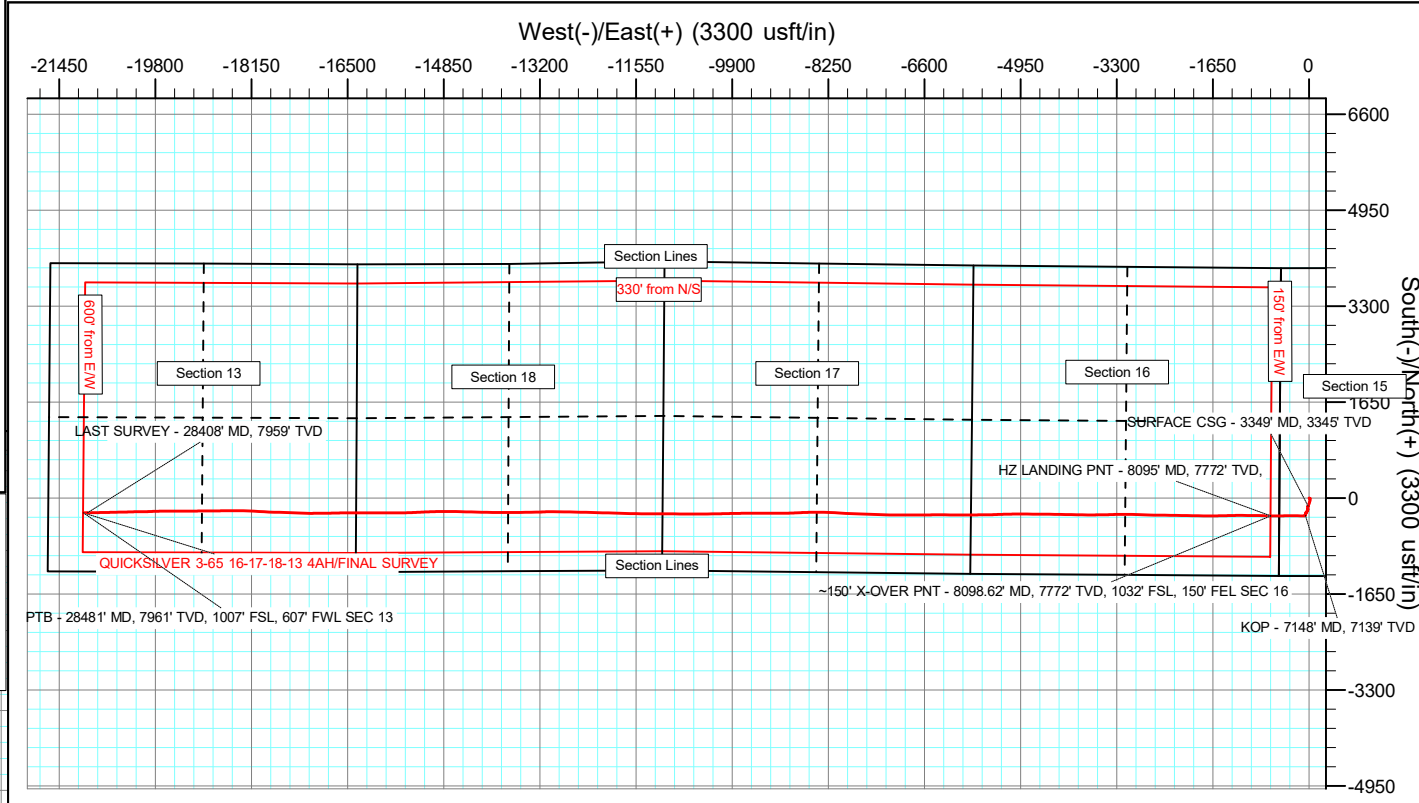
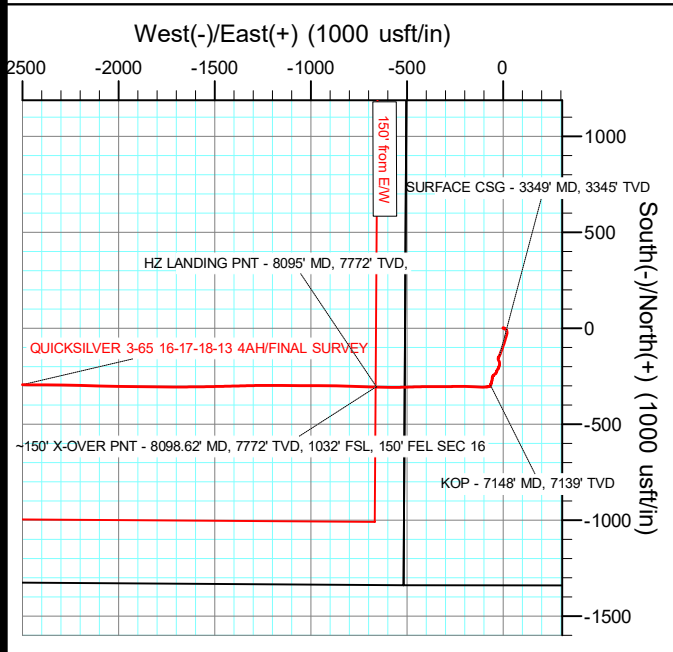
Azimuths to True North
 Magnetic North: 7.31°
 Magnetic Field
 Strength: 51209.2nT
 Dip Angle: 66.01°
 Date: 7/9/2025
 Model: IGRF2020

WELL DETAILS: QUICKSILVER 3-65 16-17-18-13 4AH

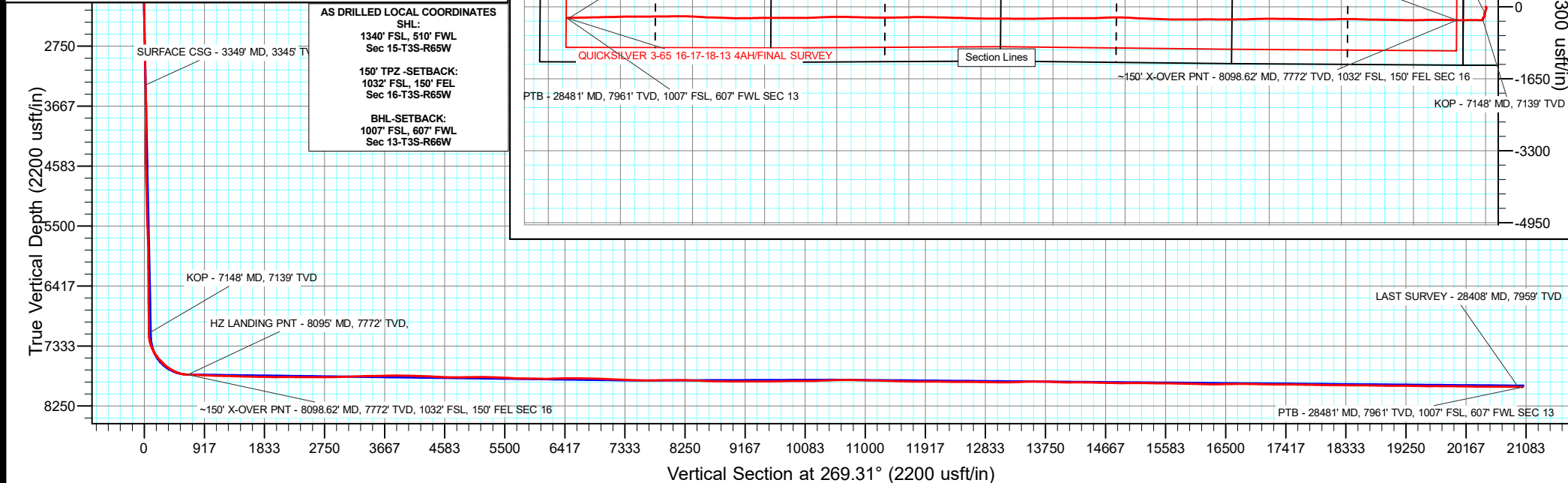
+N/-S	+E/-W	Northing	Easting	5506.00	Latitude	Longitude	Slot
0.00	0.00	1166472.57	3236762.72		39.787249°N	104.657498°W	

ANNOTATIONS

MD	Inc	Azi	TVD	+N/-S	+E/-W	VSec	Departure	Annotation
3349.00	3.22	205.59	3344.58	-138.41	-17.47	19.14	161.73	SURFACE CSG - 3349' MD, 3345' TVD
7148.00	2.40	214.82	7139.18	-298.93	-64.72	68.32	341.27	KOP - 7148' MD, 7139' TVD
8095.00	86.52	271.40	7771.74	-306.06	-657.93	661.58	936.21	HZ LANDING PNT - 8095' MD, 7772' TVD,
8098.62	86.81	271.45	7771.95	-305.97	-661.55	665.19	939.81	~150' X-OVER PNT - 8098.62' MD, 7772' TVD, 1032' FSL, 150' FEL SEC 16
28408.00	88.60	268.19	7958.85	-251.23	-20960.52	20962.03	21244.13	LAST SURVEY - 28408' MD, 7959' TVD
28481.00	88.60	268.19	7960.64	-253.54	-21033.46	21034.99	21317.10	PTB - 28481' MD, 7961' TVD, 1007' FSL, 607' FWL SEC 13



AS DRILLED LOCAL COORDINATES
 SHL:
 1340' FSL, 510' FWL
 Sec 15-T3S-R65W
 150' TPZ -SETBACK:
 1032' FSL, 150' FEL
 Sec 16-T3S-R65W
 BHL-SETBACK:
 1007' FSL, 607' FWL
 Sec 13-T3S-R66W



Civitas Resources

Survey Report

Company: CRESTONE PEAK RESOURCES	Local Co-ordinate Reference: Well QUICKSILVER 3-65 16-17-18-13 4AH
Project: ADAMS COUNTY	TVD Reference: KB 25' @ 5531.00usft
Site: SEC 15-T3S-R65W	MD Reference: KB 25' @ 5531.00usft
Well: QUICKSILVER 3-65 16-17-18-13 4AH	North Reference: True
Wellbore: OWB	Survey Calculation Method: Minimum Curvature
Design: FINAL SURVEY	Database: EDM

Project ADAMS COUNTY		
Map System: US State Plane 1983	System Datum: Mean Sea Level	
Geo Datum: North American Datum 1983		
Map Zone: Colorado Northern Zone	Using geodetic scale factor	

Site SEC 15-T3S-R65W		
Site Position:	Northing: 1,165,129.40 usft	Latitude: 39.783575°N
From: Lat/Long	Easting: 3,236,258.06 usft	Longitude: 104.659339°W
Position Uncertainty: 0.00 usft	Slot Radius: 13.200 in	Grid Convergence: 0.54 °

Well QUICKSILVER 3-65 16-17-18-13 4AH		
Well Position +N/-S 0.00 usft	Northing: 1,166,472.56 usft	Latitude: 39.787249°N
+E/-W 0.00 usft	Easting: 3,236,762.72 usft	Longitude: 104.657498°W
Position Uncertainty 0.00 usft	Wellhead Elevation: usft	Ground Level: 5,506.00 usft

Wellbore OWB					
Magnetics	Model Name	Sample Date	Declination (°)	Dip Angle (°)	Field Strength (nT)
	IGRF2020	7/9/2025	7.31	66.01	51,209.18954326

Design FINAL SURVEY				
Audit Notes:				
Version: 1.0	Phase: ACTUAL	Tie On Depth: 0.00		
Vertical Section:	Depth From (TVD) (usft)	+N/-S (usft)	+E/-W (usft)	Direction (°)
	0.00	0.00	0.00	269.31

Survey Program		Date 7/21/2025		
From (usft)	To (usft)	Survey (Wellbore)	Tool Name	Description
205.00	3,217.00	SURFACE SURVEY (OWB)	MWD OWSG	OWSG MWD - Standard
3,386.00	28,481.00	FINAL SURVEY (OWB)	MWD OWSG	OWSG MWD - Standard

Measured Depth (usft)	Inclination (°)	Azimuth (°)	Vertical Depth (usft)	+N/-S (usft)	+E/-W (usft)	Vertical Section (usft)	Dogleg Rate (°/100ft)	Build Rate (°/100ft)	Turn Rate (°/100ft)
0.00	0.00	0.00	0.00	0.00	0.00	0.00	0.00	0.00	0.00
205.00	0.39	335.33	205.00	0.63	-0.29	0.28	0.19	0.19	0.00
294.00	0.61	324.20	294.00	1.29	-0.69	0.68	0.27	0.25	-12.51
385.00	1.33	75.76	384.99	1.95	0.05	-0.07	1.82	0.79	122.59
475.00	1.55	93.63	474.96	2.13	2.27	-2.30	0.55	0.24	19.86
569.00	1.54	87.55	568.92	2.10	4.80	-4.83	0.17	-0.01	-6.47
663.00	2.02	146.13	662.89	0.78	6.99	-7.00	1.91	0.51	62.32
757.00	2.06	122.39	756.83	-1.50	9.34	-9.32	0.89	0.04	-25.26
852.00	2.36	121.17	851.76	-3.43	12.45	-12.41	0.32	0.32	-1.28
947.00	2.51	146.71	946.67	-6.18	15.27	-15.19	1.14	0.16	26.88

Civitas Resources

Survey Report

Company:	CRESTONE PEAK RESOURCES	Local Co-ordinate Reference:	Well QUICKSILVER 3-65 16-17-18-13 4AH
Project:	ADAMS COUNTY	TVD Reference:	KB 25' @ 5531.00usft
Site:	SEC 15-T3S-R65W	MD Reference:	KB 25' @ 5531.00usft
Well:	QUICKSILVER 3-65 16-17-18-13 4AH	North Reference:	True
Wellbore:	OWB	Survey Calculation Method:	Minimum Curvature
Design:	FINAL SURVEY	Database:	EDM

Survey										
Measured Depth (usft)	Inclination (°)	Azimuth (°)	Vertical Depth (usft)	+N/-S (usft)	+E/-W (usft)	Vertical Section (usft)	Dogleg Rate (°/100ft)	Build Rate (°/100ft)	Turn Rate (°/100ft)	
1,041.00	3.15	148.93	1,040.56	-10.11	17.73	-17.61	0.69	0.68	2.36	
1,135.00	3.49	170.30	1,134.40	-15.15	19.55	-19.36	1.36	0.36	22.73	
1,230.00	3.65	172.40	1,229.22	-20.99	20.43	-20.18	0.22	0.17	2.21	
1,325.00	3.50	189.95	1,324.04	-26.85	20.33	-20.01	1.16	-0.16	18.47	
1,420.00	3.42	198.07	1,418.87	-32.40	18.95	-18.56	0.52	-0.08	8.55	
1,514.00	3.74	198.35	1,512.68	-37.97	17.12	-16.66	0.34	0.34	0.30	
1,608.00	3.57	196.55	1,606.49	-43.69	15.32	-14.79	0.22	-0.18	-1.91	
1,703.00	3.75	196.76	1,701.30	-49.50	13.58	-12.98	0.19	0.19	0.22	
1,798.00	3.53	195.95	1,796.11	-55.28	11.88	-11.21	0.24	-0.23	-0.85	
1,892.00	3.66	197.97	1,889.92	-60.92	10.16	-9.43	0.19	0.14	2.15	
1,987.00	3.63	198.21	1,984.73	-66.66	8.29	-7.48	0.04	-0.03	0.25	
2,082.00	3.71	194.67	2,079.53	-72.49	6.57	-5.69	0.25	0.08	-3.73	
2,176.00	3.00	197.50	2,173.37	-77.78	5.06	-4.12	0.78	-0.76	3.01	
2,271.00	3.16	201.92	2,268.23	-82.58	3.33	-2.34	0.30	0.17	4.65	
2,366.00	3.08	201.72	2,363.09	-87.38	1.41	-0.36	0.08	-0.08	-0.21	
2,460.00	3.19	197.63	2,456.95	-92.22	-0.32	1.43	0.27	0.12	-4.35	
2,554.00	3.37	199.80	2,550.80	-97.31	-2.04	3.22	0.23	0.19	2.31	
2,649.00	3.26	200.96	2,645.64	-102.46	-3.96	5.19	0.14	-0.12	1.22	
2,744.00	3.36	201.35	2,740.48	-107.58	-5.94	7.23	0.11	0.11	0.41	
2,838.00	3.29	200.57	2,834.32	-112.67	-7.89	9.24	0.09	-0.07	-0.83	
2,932.00	2.95	198.27	2,928.18	-117.49	-9.59	11.01	0.39	-0.36	-2.45	
3,027.00	3.10	200.43	3,023.05	-122.22	-11.26	12.73	0.20	0.16	2.27	
3,122.00	3.24	198.52	3,117.91	-127.17	-13.00	14.54	0.18	0.15	-2.01	
3,217.00	2.89	200.62	3,212.77	-131.96	-14.70	16.29	0.39	-0.37	2.21	
3,349.00	3.22	205.59	3,344.58	-138.41	-17.47	19.14	0.32	0.25	3.76	
SURFACE CSG - 3349' MD, 3345' TVD										
3,386.00	3.31	206.80	3,381.52	-140.30	-18.40	20.09	0.32	0.26	3.28	
3,480.00	3.18	202.48	3,475.37	-145.13	-20.62	22.37	0.29	-0.14	-4.60	
3,574.00	2.83	205.39	3,569.24	-149.64	-22.61	24.42	0.41	-0.37	3.10	
3,669.00	2.43	216.28	3,664.14	-153.38	-24.81	26.66	0.67	-0.42	11.46	
3,764.00	2.52	177.72	3,759.06	-157.09	-25.92	27.81	1.72	0.09	-40.59	
3,858.00	2.34	168.11	3,852.98	-161.03	-25.44	27.38	0.47	-0.19	-10.22	
3,953.00	2.08	159.25	3,947.91	-164.54	-24.43	26.41	0.45	-0.27	-9.33	
4,047.00	3.58	152.91	4,041.79	-168.75	-22.49	24.52	1.63	1.60	-6.74	
4,142.00	3.23	153.74	4,136.62	-173.79	-19.96	22.05	0.37	-0.37	0.87	
4,236.00	3.62	178.55	4,230.46	-179.13	-18.71	20.87	1.62	0.41	26.39	
4,331.00	3.58	181.42	4,325.27	-185.10	-18.71	20.94	0.19	-0.04	3.02	
4,425.00	2.87	177.81	4,419.12	-190.38	-18.69	20.98	0.79	-0.76	-3.84	
4,520.00	3.40	203.50	4,513.98	-195.34	-19.72	22.07	1.56	0.56	27.04	
4,615.00	3.09	204.77	4,608.83	-200.25	-21.92	24.33	0.33	-0.33	1.34	
4,709.00	2.52	193.45	4,702.72	-204.56	-23.46	25.92	0.84	-0.61	-12.04	
4,804.00	3.89	210.86	4,797.57	-209.36	-25.60	28.12	1.75	1.44	18.33	
4,898.00	3.54	209.23	4,891.37	-214.63	-28.65	31.24	0.39	-0.37	-1.73	

Civitas Resources

Survey Report

Company:	CRESTONE PEAK RESOURCES	Local Co-ordinate Reference:	Well QUICKSILVER 3-65 16-17-18-13 4AH
Project:	ADAMS COUNTY	TVD Reference:	KB 25' @ 5531.00usft
Site:	SEC 15-T3S-R65W	MD Reference:	KB 25' @ 5531.00usft
Well:	QUICKSILVER 3-65 16-17-18-13 4AH	North Reference:	True
Wellbore:	OWB	Survey Calculation Method:	Minimum Curvature
Design:	FINAL SURVEY	Database:	EDM

Survey										
Measured Depth (usft)	Inclination (°)	Azimuth (°)	Vertical Depth (usft)	+N/-S (usft)	+E/-W (usft)	Vertical Section (usft)	Dogleg Rate (°/100ft)	Build Rate (°/100ft)	Turn Rate (°/100ft)	
4,992.00	3.49	207.33	4,985.20	-219.70	-31.38	34.03	0.13	-0.05	-2.02	
5,087.00	3.00	204.38	5,080.04	-224.54	-33.74	36.44	0.54	-0.52	-3.11	
5,182.00	2.56	196.98	5,174.93	-228.83	-35.38	38.14	0.60	-0.46	-7.79	
5,277.00	2.43	194.20	5,269.84	-232.81	-36.50	39.30	0.19	-0.14	-2.93	
5,371.00	2.83	238.00	5,363.75	-235.97	-38.95	41.79	2.12	0.43	46.60	
5,466.00	2.83	234.21	5,458.64	-238.59	-42.84	45.72	0.20	0.00	-3.99	
5,560.00	2.96	230.91	5,552.52	-241.47	-46.61	49.52	0.22	0.14	-3.51	
5,655.00	2.96	227.60	5,647.39	-244.67	-50.32	53.27	0.18	0.00	-3.48	
5,750.00	3.62	205.39	5,742.24	-249.04	-53.42	56.42	1.50	0.69	-23.38	
5,844.00	3.40	195.48	5,836.06	-254.41	-55.44	58.50	0.69	-0.23	-10.54	
5,939.00	2.65	183.09	5,930.93	-259.31	-56.31	59.43	1.04	-0.79	-13.04	
6,034.00	2.61	183.23	6,025.83	-263.67	-56.55	59.72	0.04	-0.04	0.15	
6,128.00	2.43	180.45	6,119.74	-267.80	-56.69	59.91	0.23	-0.19	-2.96	
6,223.00	2.21	209.23	6,214.66	-271.41	-57.60	60.86	1.23	-0.23	30.29	
6,317.00	1.68	204.86	6,308.61	-274.24	-59.06	62.36	0.59	-0.56	-4.65	
6,412.00	1.77	189.18	6,403.57	-276.95	-59.88	63.21	0.50	0.09	-16.51	
6,507.00	1.55	181.11	6,498.53	-279.68	-60.14	63.51	0.34	-0.23	-8.49	
6,601.00	1.59	175.82	6,592.49	-282.26	-60.07	63.47	0.16	0.04	-5.63	
6,696.00	2.65	210.33	6,687.43	-285.47	-61.08	64.52	1.70	1.12	36.33	
6,791.00	1.94	221.70	6,782.35	-288.56	-63.26	66.73	0.88	-0.75	11.97	
6,886.00	1.94	190.06	6,877.30	-291.35	-64.61	68.12	1.11	0.00	-33.31	
6,980.00	1.77	177.81	6,971.25	-294.36	-64.83	68.38	0.46	-0.18	-13.03	
7,075.00	1.41	153.35	7,066.22	-296.88	-64.25	67.83	0.80	-0.38	-25.75	
7,148.00	2.40	214.82	7,139.18	-298.93	-64.72	68.32	2.91	1.36	84.20	
KOP - 7148' MD, 7139' TVD										
7,169.00	2.92	221.83	7,160.16	-299.69	-65.33	68.94	2.91	2.47	33.40	
7,264.00	12.90	258.14	7,254.17	-303.69	-77.36	81.01	11.25	10.51	38.22	
7,358.00	21.26	269.33	7,343.97	-306.05	-104.72	108.40	9.52	8.89	11.90	
7,452.00	29.52	274.05	7,428.82	-304.61	-144.94	148.60	9.04	8.79	5.02	
7,546.00	38.05	271.23	7,506.88	-302.35	-197.10	200.73	9.22	9.07	-3.00	
7,641.00	43.84	268.06	7,578.62	-302.83	-259.31	262.94	6.47	6.09	-3.34	
7,736.00	51.39	270.66	7,642.62	-303.52	-329.42	333.05	8.20	7.95	2.74	
7,831.00	60.50	269.16	7,695.76	-303.70	-408.04	411.67	9.68	9.59	-1.58	
7,926.00	67.43	267.88	7,737.44	-305.93	-493.31	496.96	7.39	7.29	-1.35	
8,020.00	80.56	270.39	7,763.30	-307.23	-583.45	587.11	14.20	13.97	2.67	
8,095.00	86.52	271.40	7,771.74	-306.06	-657.93	661.58	8.06	7.95	1.35	
HZ LANDING PNT - 8095' MD, 7772' TVD,										
8,098.62	86.81	271.45	7,771.95	-305.97	-661.55	665.19	8.06	7.95	1.34	
-150' X-OVER PNT - 8098.62' MD, 7772' TVD, 1032' FSL, 150' FEL SEC 16										
8,115.00	88.11	271.67	7,772.67	-305.52	-677.90	681.54	8.06	7.95	1.33	
8,210.00	88.16	271.93	7,775.76	-302.54	-772.81	776.40	0.28	0.05	0.27	
8,304.00	87.27	271.58	7,779.51	-299.66	-866.69	870.24	1.02	-0.95	-0.37	
8,399.00	87.58	270.17	7,783.78	-298.21	-961.58	965.10	1.52	0.33	-1.48	
8,494.00	87.76	270.08	7,787.64	-298.01	-1,056.50	1,060.01	0.21	0.19	-0.09	

Civitas Resources

Survey Report

Company:	CRESTONE PEAK RESOURCES	Local Co-ordinate Reference:	Well QUICKSILVER 3-65 16-17-18-13 4AH
Project:	ADAMS COUNTY	TVD Reference:	KB 25' @ 5531.00usft
Site:	SEC 15-T3S-R65W	MD Reference:	KB 25' @ 5531.00usft
Well:	QUICKSILVER 3-65 16-17-18-13 4AH	North Reference:	True
Wellbore:	OWB	Survey Calculation Method:	Minimum Curvature
Design:	FINAL SURVEY	Database:	EDM

Survey										
Measured Depth (usft)	Inclination (°)	Azimuth (°)	Vertical Depth (usft)	+N/-S (usft)	+E/-W (usft)	Vertical Section (usft)	Dogleg Rate (°/100ft)	Build Rate (°/100ft)	Turn Rate (°/100ft)	
8,588.00	89.17	270.61	7,790.16	-297.44	-1,150.46	1,153.96	1.60	1.50	0.56	
8,683.00	89.00	269.51	7,791.68	-297.34	-1,245.45	1,248.94	1.17	-0.18	-1.16	
8,778.00	88.56	268.36	7,793.70	-299.11	-1,340.41	1,343.92	1.30	-0.46	-1.21	
8,872.00	87.58	268.67	7,796.87	-301.54	-1,434.32	1,437.85	1.09	-1.04	0.33	
8,967.00	88.95	268.89	7,799.74	-303.56	-1,529.25	1,532.80	1.46	1.44	0.23	
9,061.00	89.00	269.51	7,801.42	-304.87	-1,623.23	1,626.79	0.66	0.05	0.66	
9,155.00	88.38	270.13	7,803.57	-305.17	-1,717.20	1,720.76	0.93	-0.66	0.66	
9,250.00	89.35	271.01	7,805.45	-304.22	-1,812.18	1,815.71	1.38	1.02	0.93	
9,345.00	88.25	270.35	7,807.44	-303.10	-1,907.15	1,910.66	1.35	-1.16	-0.69	
9,439.00	90.54	270.96	7,808.44	-302.02	-2,001.13	2,004.63	2.52	2.44	0.65	
9,533.00	90.06	271.18	7,807.94	-300.27	-2,095.11	2,098.58	0.56	-0.51	0.23	
9,628.00	89.93	271.58	7,807.95	-297.98	-2,190.08	2,193.52	0.44	-0.14	0.42	
9,722.00	89.57	271.10	7,808.36	-295.78	-2,284.06	2,287.46	0.64	-0.38	-0.51	
9,817.00	90.23	270.39	7,808.53	-294.55	-2,379.05	2,382.43	1.02	0.69	-0.75	
9,912.00	89.84	270.04	7,808.47	-294.19	-2,474.05	2,477.41	0.55	-0.41	-0.37	
10,007.00	89.75	270.83	7,808.81	-293.47	-2,569.04	2,572.39	0.84	-0.09	0.83	
10,102.00	89.57	271.58	7,809.37	-291.47	-2,664.02	2,667.34	0.81	-0.19	0.79	
10,196.00	90.46	272.20	7,809.35	-288.37	-2,757.97	2,761.24	1.15	0.95	0.66	
10,291.00	90.37	271.71	7,808.66	-285.13	-2,852.91	2,856.14	0.52	-0.09	-0.52	
10,385.00	91.34	271.27	7,807.26	-282.69	-2,946.87	2,950.06	1.13	1.03	-0.47	
10,480.00	91.87	271.14	7,804.60	-280.69	-3,041.81	3,044.97	0.57	0.56	-0.14	
10,574.00	91.69	269.82	7,801.68	-279.90	-3,135.76	3,138.90	1.42	-0.19	-1.40	
10,669.00	92.53	270.39	7,798.18	-279.73	-3,230.69	3,233.83	1.07	0.88	0.60	
10,764.00	91.65	268.72	7,794.72	-280.47	-3,325.62	3,328.76	1.99	-0.93	-1.76	
10,859.00	90.50	267.53	7,792.93	-283.57	-3,420.55	3,423.72	1.74	-1.21	-1.25	
10,953.00	91.52	270.17	7,791.28	-285.46	-3,514.51	3,517.69	3.01	1.09	2.81	
11,048.00	91.47	268.45	7,788.80	-286.60	-3,609.46	3,612.66	1.81	-0.05	-1.81	
11,142.00	90.54	269.91	7,787.15	-287.95	-3,703.44	3,706.64	1.84	-0.99	1.55	
11,237.00	90.59	270.13	7,786.21	-287.92	-3,798.43	3,801.62	0.24	0.05	0.23	
11,332.00	89.22	271.14	7,786.37	-286.86	-3,893.42	3,896.60	1.79	-1.44	1.06	
11,426.00	89.31	271.80	7,787.57	-284.45	-3,987.38	3,990.52	0.71	0.10	0.70	
11,521.00	88.69	270.88	7,789.23	-282.23	-4,082.34	4,085.45	1.17	-0.65	-0.97	
11,616.00	87.72	269.86	7,792.21	-281.62	-4,177.29	4,180.38	1.48	-1.02	-1.07	
11,710.00	88.64	271.14	7,795.19	-280.80	-4,271.24	4,274.31	1.68	0.98	1.36	
11,805.00	86.79	271.54	7,798.98	-278.58	-4,366.13	4,369.17	1.99	-1.95	0.42	
11,899.00	87.67	270.26	7,803.52	-277.10	-4,460.00	4,463.02	1.65	0.94	-1.36	
11,994.00	86.57	270.21	7,808.30	-276.71	-4,554.88	4,557.89	1.16	-1.16	-0.05	
12,088.00	89.75	271.10	7,811.32	-275.64	-4,648.82	4,651.80	3.51	3.38	0.95	
12,183.00	89.97	270.39	7,811.55	-274.40	-4,743.81	4,746.77	0.78	0.23	-0.75	
12,278.00	90.50	270.79	7,811.16	-273.43	-4,838.80	4,841.74	0.70	0.56	0.42	
12,372.00	90.23	269.60	7,810.56	-273.11	-4,932.80	4,935.73	1.30	-0.29	-1.27	
12,467.00	90.81	269.77	7,809.70	-273.63	-5,027.79	5,030.72	0.64	0.61	0.18	
12,561.00	91.12	268.80	7,808.11	-274.80	-5,121.77	5,124.71	1.08	0.33	-1.03	

Civitas Resources

Survey Report

Company:	CRESTONE PEAK RESOURCES	Local Co-ordinate Reference:	Well QUICKSILVER 3-65 16-17-18-13 4AH
Project:	ADAMS COUNTY	TVD Reference:	KB 25' @ 5531.00usft
Site:	SEC 15-T3S-R65W	MD Reference:	KB 25' @ 5531.00usft
Well:	QUICKSILVER 3-65 16-17-18-13 4AH	North Reference:	True
Wellbore:	OWB	Survey Calculation Method:	Minimum Curvature
Design:	FINAL SURVEY	Database:	EDM

Survey										
Measured Depth (usft)	Inclination (°)	Azimuth (°)	Vertical Depth (usft)	+N/-S (usft)	+E/-W (usft)	Vertical Section (usft)	Dogleg Rate (°/100ft)	Build Rate (°/100ft)	Turn Rate (°/100ft)	
12,656.00	88.42	268.72	7,808.50	-276.86	-5,216.74	5,219.69	2.84	-2.84	-0.08	
12,750.00	87.85	268.14	7,811.55	-279.43	-5,310.65	5,313.63	0.86	-0.61	-0.62	
12,845.00	88.03	266.87	7,814.97	-283.56	-5,405.50	5,408.52	1.35	0.19	-1.34	
12,939.00	87.41	270.04	7,818.71	-286.10	-5,499.38	5,502.42	3.43	-0.66	3.37	
13,034.00	86.30	269.60	7,823.92	-286.39	-5,594.23	5,597.28	1.26	-1.17	-0.46	
13,129.00	87.98	268.94	7,828.66	-287.60	-5,689.10	5,692.15	1.90	1.77	-0.69	
13,223.00	90.06	269.55	7,830.27	-288.84	-5,783.07	5,786.13	2.31	2.21	0.65	
13,318.00	89.09	268.94	7,830.97	-290.09	-5,878.06	5,881.13	1.21	-1.02	-0.64	
13,413.00	89.22	270.44	7,832.38	-290.61	-5,973.05	5,976.11	1.58	0.14	1.58	
13,507.00	88.03	270.17	7,834.63	-290.11	-6,067.02	6,070.07	1.30	-1.27	-0.29	
13,601.00	91.56	271.54	7,834.97	-288.70	-6,160.99	6,164.02	4.03	3.76	1.46	
13,696.00	92.80	269.99	7,831.35	-287.44	-6,255.91	6,258.92	2.09	1.31	-1.63	
13,790.00	90.77	270.13	7,828.43	-287.34	-6,349.86	6,352.86	2.16	-2.16	0.15	
13,885.00	91.34	269.82	7,826.68	-287.38	-6,444.84	6,447.83	0.68	0.60	-0.33	
13,979.00	89.26	268.98	7,826.18	-288.36	-6,538.83	6,541.83	2.39	-2.21	-0.89	
14,073.00	89.22	269.99	7,827.43	-289.21	-6,632.81	6,635.82	1.08	-0.04	1.07	
14,168.00	88.78	269.95	7,829.09	-289.26	-6,727.80	6,730.80	0.47	-0.46	-0.04	
14,263.00	88.56	269.82	7,831.29	-289.45	-6,822.77	6,825.77	0.27	-0.23	-0.14	
14,358.00	88.38	269.51	7,833.83	-290.00	-6,917.74	6,920.73	0.38	-0.19	-0.33	
14,452.00	87.85	270.39	7,836.92	-290.09	-7,011.68	7,014.67	1.09	-0.56	0.94	
14,547.00	86.92	269.55	7,841.26	-290.14	-7,106.58	7,109.56	1.32	-0.98	-0.88	
14,641.00	88.25	271.45	7,845.22	-289.31	-7,200.49	7,203.45	2.47	1.41	2.02	
14,736.00	86.96	272.37	7,849.19	-286.15	-7,295.35	7,298.27	1.67	-1.36	0.97	
14,830.00	87.58	271.89	7,853.67	-282.66	-7,389.18	7,392.05	0.83	0.66	-0.51	
14,924.00	88.82	272.20	7,856.62	-279.31	-7,483.07	7,485.89	1.36	1.32	0.33	
15,019.00	88.51	272.90	7,858.83	-275.08	-7,577.95	7,580.72	0.81	-0.33	0.74	
15,113.00	90.15	270.70	7,859.93	-272.13	-7,671.89	7,674.61	2.92	1.74	-2.34	
15,208.00	90.77	272.15	7,859.17	-269.77	-7,766.85	7,769.54	1.66	0.65	1.53	
15,302.00	89.97	271.40	7,858.56	-266.86	-7,860.80	7,863.45	1.17	-0.85	-0.80	
15,396.00	90.50	274.27	7,858.17	-262.21	-7,954.68	7,957.26	3.10	0.56	3.05	
15,491.00	90.94	274.14	7,856.98	-255.24	-8,049.42	8,051.91	0.48	0.46	-0.14	
15,585.00	90.06	273.65	7,856.16	-248.86	-8,143.19	8,145.60	1.07	-0.94	-0.52	
15,680.00	88.60	270.52	7,857.27	-245.40	-8,238.11	8,240.47	3.64	-1.54	-3.29	
15,773.00	88.25	270.74	7,859.83	-244.38	-8,331.07	8,333.41	0.44	-0.38	0.24	
15,868.00	88.07	269.60	7,862.88	-244.10	-8,426.02	8,428.35	1.21	-0.19	-1.20	
15,963.00	87.14	270.21	7,866.85	-244.26	-8,520.93	8,523.26	1.17	-0.98	0.64	
16,058.00	87.89	268.94	7,870.97	-244.96	-8,615.84	8,618.17	1.55	0.79	-1.34	
16,152.00	89.66	267.13	7,872.98	-248.18	-8,709.75	8,712.11	2.69	1.88	-1.93	
16,247.00	89.13	267.17	7,873.98	-252.91	-8,804.63	8,807.04	0.56	-0.56	0.04	
16,341.00	89.97	267.70	7,874.72	-257.11	-8,898.53	8,900.99	1.06	0.89	0.56	
16,447.00	89.31	270.13	7,875.38	-259.12	-9,004.50	9,006.97	2.38	-0.62	2.29	
16,541.00	89.66	270.30	7,876.23	-258.77	-9,098.50	9,100.96	0.41	0.37	0.18	
16,636.00	90.28	269.47	7,876.28	-258.96	-9,193.50	9,195.95	1.09	0.65	-0.87	
16,731.00	90.32	269.51	7,875.78	-259.80	-9,288.49	9,290.95	0.06	0.04	0.04	

Civitas Resources

Survey Report

Company:	CRESTONE PEAK RESOURCES	Local Co-ordinate Reference:	Well QUICKSILVER 3-65 16-17-18-13 4AH
Project:	ADAMS COUNTY	TVD Reference:	KB 25' @ 5531.00usft
Site:	SEC 15-T3S-R65W	MD Reference:	KB 25' @ 5531.00usft
Well:	QUICKSILVER 3-65 16-17-18-13 4AH	North Reference:	True
Wellbore:	OWB	Survey Calculation Method:	Minimum Curvature
Design:	FINAL SURVEY	Database:	EDM

Survey									
Measured Depth (usft)	Inclination (°)	Azimuth (°)	Vertical Depth (usft)	+N/-S (usft)	+E/-W (usft)	Vertical Section (usft)	Dogleg Rate (°/100ft)	Build Rate (°/100ft)	Turn Rate (°/100ft)
16,826.00	89.09	270.17	7,876.27	-260.07	-9,383.49	9,385.94	1.47	-1.29	0.69
16,921.00	90.94	269.55	7,876.25	-260.30	-9,478.48	9,480.93	2.05	1.95	-0.65
17,015.00	90.85	269.86	7,874.78	-260.79	-9,572.47	9,574.92	0.34	-0.10	0.33
17,109.00	91.69	270.04	7,872.69	-260.87	-9,666.45	9,668.89	0.91	0.89	0.19
17,204.00	91.56	269.51	7,870.00	-261.24	-9,761.41	9,763.85	0.57	-0.14	-0.56
17,299.00	90.77	269.16	7,868.07	-262.34	-9,856.38	9,858.83	0.91	-0.83	-0.37
17,394.00	89.48	267.92	7,867.86	-264.76	-9,951.35	9,953.81	1.88	-1.36	-1.31
17,488.00	90.41	269.07	7,867.95	-267.23	-10,045.31	10,047.80	1.57	0.99	1.22
17,583.00	88.60	268.72	7,868.77	-269.06	-10,140.28	10,142.79	1.94	-1.91	-0.37
17,677.00	92.49	269.38	7,867.88	-270.62	-10,234.25	10,236.77	4.20	4.14	0.70
17,772.00	93.11	269.29	7,863.24	-271.72	-10,329.13	10,331.65	0.66	0.65	-0.09
17,866.00	91.91	270.04	7,859.12	-272.27	-10,423.03	10,425.56	1.51	-1.28	0.80
17,960.00	91.65	269.55	7,856.20	-272.61	-10,516.99	10,519.51	0.59	-0.28	-0.52
18,054.00	90.59	270.61	7,854.36	-272.48	-10,610.97	10,613.48	1.59	-1.13	1.13
18,149.00	90.46	270.13	7,853.49	-271.86	-10,705.96	10,708.46	0.52	-0.14	-0.51
18,244.00	89.44	270.79	7,853.58	-271.10	-10,800.96	10,803.44	1.28	-1.07	0.69
18,339.00	88.42	269.73	7,855.35	-270.67	-10,895.94	10,898.41	1.55	-1.07	-1.12
18,433.00	88.47	270.52	7,857.90	-270.47	-10,989.90	10,992.36	0.84	0.05	0.84
18,527.00	88.64	270.30	7,860.27	-269.79	-11,083.87	11,086.31	0.30	0.18	-0.23
18,622.00	88.56	269.95	7,862.59	-269.59	-11,178.84	11,181.28	0.38	-0.08	-0.37
18,716.00	88.25	269.91	7,865.21	-269.70	-11,272.80	11,275.23	0.33	-0.33	-0.04
18,810.00	88.47	270.30	7,867.90	-269.53	-11,366.76	11,369.19	0.48	0.23	0.41
18,905.00	87.98	270.13	7,870.84	-269.17	-11,461.72	11,464.13	0.55	-0.52	-0.18
19,000.00	88.95	271.63	7,873.39	-267.71	-11,556.67	11,559.06	1.88	1.02	1.58
19,095.00	88.33	271.85	7,875.64	-264.83	-11,651.60	11,653.94	0.69	-0.65	0.23
19,189.00	89.88	271.89	7,877.11	-261.76	-11,745.53	11,747.83	1.65	1.65	0.04
19,284.00	89.09	272.59	7,877.96	-258.05	-11,840.45	11,842.71	1.11	-0.83	0.74
19,379.00	90.19	270.70	7,878.56	-255.32	-11,935.41	11,937.62	2.30	1.16	-1.99
19,474.00	90.10	270.48	7,878.32	-254.34	-12,030.40	12,032.59	0.25	-0.09	-0.23
19,569.00	89.62	271.40	7,878.55	-252.79	-12,125.39	12,127.55	1.09	-0.51	0.97
19,663.00	88.86	271.18	7,879.80	-250.67	-12,219.36	12,221.49	0.84	-0.81	-0.23
19,758.00	89.04	272.24	7,881.54	-247.84	-12,314.30	12,316.39	1.13	0.19	1.12
19,852.00	90.46	271.76	7,881.95	-244.56	-12,408.24	12,410.28	1.59	1.51	-0.51
19,947.00	90.41	271.01	7,881.23	-242.26	-12,503.20	12,505.22	0.79	-0.05	-0.79
20,041.00	89.70	271.40	7,881.14	-240.28	-12,597.18	12,599.16	0.86	-0.76	0.41
20,136.00	88.64	271.71	7,882.52	-237.70	-12,692.14	12,694.08	1.16	-1.12	0.33
20,230.00	89.04	271.36	7,884.42	-235.19	-12,786.08	12,787.99	0.57	0.43	-0.37
20,419.00	89.17	270.44	7,887.37	-232.22	-12,975.03	12,976.89	0.49	0.07	-0.49
20,514.00	90.01	267.88	7,888.05	-233.61	-13,070.01	13,071.88	2.84	0.88	-2.69
20,608.00	89.97	267.26	7,888.07	-237.60	-13,163.93	13,165.84	0.66	-0.04	-0.66
20,703.00	91.78	269.11	7,886.62	-240.61	-13,258.86	13,260.80	2.72	1.91	1.95
20,798.00	92.05	269.03	7,883.44	-242.15	-13,353.80	13,355.74	0.30	0.28	-0.08
20,892.00	92.00	268.63	7,880.12	-244.06	-13,447.72	13,449.68	0.43	-0.05	-0.43

Civitas Resources

Survey Report

Company:	CRESTONE PEAK RESOURCES	Local Co-ordinate Reference:	Well QUICKSILVER 3-65 16-17-18-13 4AH
Project:	ADAMS COUNTY	TVD Reference:	KB 25' @ 5531.00usft
Site:	SEC 15-T3S-R65W	MD Reference:	KB 25' @ 5531.00usft
Well:	QUICKSILVER 3-65 16-17-18-13 4AH	North Reference:	True
Wellbore:	OWB	Survey Calculation Method:	Minimum Curvature
Design:	FINAL SURVEY	Database:	EDM

Survey										
Measured Depth (usft)	Inclination (°)	Azimuth (°)	Vertical Depth (usft)	+N/-S (usft)	+E/-W (usft)	Vertical Section (usft)	Dogleg Rate (°/100ft)	Build Rate (°/100ft)	Turn Rate (°/100ft)	
20,987.00	90.54	268.63	7,878.01	-246.34	-13,542.66	13,544.65	1.54	-1.54	0.00	
21,082.00	90.32	269.77	7,877.30	-247.66	-13,637.65	13,639.64	1.22	-0.23	1.20	
21,176.00	88.86	270.08	7,877.97	-247.79	-13,731.65	13,733.63	1.59	-1.55	0.33	
21,271.00	87.32	270.21	7,881.14	-247.54	-13,826.59	13,828.57	1.63	-1.62	0.14	
21,366.00	87.54	270.21	7,885.40	-247.20	-13,921.49	13,923.46	0.23	0.23	0.00	
21,461.00	88.11	271.27	7,889.01	-245.97	-14,016.41	14,018.36	1.27	0.60	1.12	
21,555.00	90.54	271.27	7,890.11	-243.89	-14,110.38	14,112.29	2.59	2.59	0.00	
21,644.00	90.06	271.54	7,889.65	-241.71	-14,199.35	14,201.23	0.62	-0.54	0.30	
21,733.00	89.88	271.36	7,889.69	-239.45	-14,288.32	14,290.17	0.29	-0.20	-0.20	
21,822.00	89.31	270.83	7,890.32	-237.75	-14,377.30	14,379.12	0.87	-0.64	-0.60	
21,911.00	88.69	271.63	7,891.88	-235.84	-14,466.27	14,468.06	1.14	-0.70	0.90	
22,000.00	88.16	272.02	7,894.32	-233.01	-14,555.19	14,556.94	0.74	-0.60	0.44	
22,089.00	89.40	271.80	7,896.22	-230.04	-14,644.12	14,645.83	1.42	1.39	-0.25	
22,178.00	88.91	270.21	7,897.53	-228.48	-14,733.09	14,734.77	1.87	-0.55	-1.79	
22,267.00	88.16	269.47	7,899.80	-228.73	-14,822.06	14,823.74	1.18	-0.84	-0.83	
22,356.00	90.41	269.07	7,900.92	-229.87	-14,911.04	14,912.73	2.57	2.53	-0.45	
22,445.00	90.81	268.54	7,899.97	-231.72	-15,000.01	15,001.72	0.75	0.45	-0.60	
22,535.00	90.15	267.97	7,899.21	-234.46	-15,089.97	15,091.70	0.97	-0.73	-0.63	
22,624.00	89.66	267.44	7,899.36	-238.03	-15,178.90	15,180.66	0.81	-0.55	-0.60	
22,713.00	89.13	267.26	7,900.30	-242.14	-15,267.80	15,269.61	0.63	-0.60	-0.20	
22,801.00	88.64	267.00	7,902.01	-246.55	-15,355.67	15,357.52	0.63	-0.56	-0.30	
22,890.00	89.75	268.41	7,903.26	-250.11	-15,444.58	15,446.48	2.02	1.25	1.58	
22,979.00	89.75	268.67	7,903.65	-252.38	-15,533.55	15,535.47	0.29	0.00	0.29	
23,068.00	89.17	269.55	7,904.49	-253.76	-15,622.54	15,624.46	1.18	-0.65	0.99	
23,157.00	88.86	269.77	7,906.02	-254.29	-15,711.52	15,713.45	0.43	-0.35	0.25	
23,246.00	88.25	269.95	7,908.27	-254.50	-15,800.49	15,802.41	0.71	-0.69	0.20	
23,335.00	89.40	270.30	7,910.09	-254.31	-15,889.47	15,891.39	1.35	1.29	0.39	
23,424.00	88.73	270.08	7,911.54	-254.01	-15,978.46	15,980.36	0.79	-0.75	-0.25	
23,513.00	88.60	270.48	7,913.62	-253.58	-16,067.44	16,069.33	0.47	-0.15	0.45	
23,602.00	88.07	269.77	7,916.20	-253.39	-16,156.40	16,158.28	1.00	-0.60	-0.80	
23,691.00	88.73	270.57	7,918.69	-253.12	-16,245.36	16,247.23	1.17	0.74	0.90	
23,780.00	91.07	270.39	7,918.84	-252.38	-16,334.35	16,336.21	2.64	2.63	-0.20	
23,869.00	91.34	270.13	7,916.97	-251.97	-16,423.33	16,425.17	0.42	0.30	-0.29	
23,957.00	90.68	268.94	7,915.42	-252.69	-16,511.31	16,513.16	1.55	-0.75	-1.35	
24,047.00	90.77	269.29	7,914.28	-254.08	-16,601.29	16,603.15	0.40	0.10	0.39	
24,135.00	90.19	268.45	7,913.54	-255.81	-16,689.27	16,691.14	1.16	-0.66	-0.95	
24,224.00	89.70	269.03	7,913.63	-257.77	-16,778.25	16,780.14	0.85	-0.55	0.65	
24,313.00	89.35	269.82	7,914.37	-258.66	-16,867.24	16,869.13	0.97	-0.39	0.89	
24,402.00	88.82	269.55	7,915.79	-259.15	-16,956.23	16,958.12	0.67	-0.60	-0.30	
24,491.00	88.33	268.76	7,918.00	-260.46	-17,045.19	17,047.09	1.04	-0.55	-0.89	
24,580.00	89.35	270.26	7,919.80	-261.22	-17,134.17	17,136.07	2.04	1.15	1.69	
24,672.00	89.31	271.67	7,920.88	-259.67	-17,226.14	17,228.02	1.53	-0.04	1.53	
24,761.00	89.57	271.76	7,921.75	-257.01	-17,315.10	17,316.94	0.31	0.29	0.10	

Civitas Resources

Survey Report

Company:	CRESTONE PEAK RESOURCES	Local Co-ordinate Reference:	Well QUICKSILVER 3-65 16-17-18-13 4AH
Project:	ADAMS COUNTY	TVD Reference:	KB 25' @ 5531.00usft
Site:	SEC 15-T3S-R65W	MD Reference:	KB 25' @ 5531.00usft
Well:	QUICKSILVER 3-65 16-17-18-13 4AH	North Reference:	True
Wellbore:	OWB	Survey Calculation Method:	Minimum Curvature
Design:	FINAL SURVEY	Database:	EDM

Survey										
Measured Depth (usft)	Inclination (°)	Azimuth (°)	Vertical Depth (usft)	+N/-S (usft)	+E/-W (usft)	Vertical Section (usft)	Dogleg Rate (°/100ft)	Build Rate (°/100ft)	Turn Rate (°/100ft)	
24,850.00	90.10	271.89	7,922.01	-254.18	-17,404.05	17,405.85	0.61	0.60	0.15	
24,939.00	89.75	272.99	7,922.12	-250.39	-17,492.97	17,494.72	1.30	-0.39	1.24	
25,028.00	89.04	272.15	7,923.06	-246.40	-17,581.88	17,583.57	1.24	-0.80	-0.94	
25,117.00	88.95	270.74	7,924.62	-244.15	-17,670.83	17,672.49	1.59	-0.10	-1.58	
25,206.00	89.35	271.40	7,925.94	-242.49	-17,759.81	17,761.44	0.87	0.45	0.74	
25,295.00	88.78	273.08	7,927.40	-239.01	-17,848.72	17,850.31	1.99	-0.64	1.89	
25,383.00	88.95	273.43	7,929.14	-234.02	-17,936.56	17,938.08	0.44	0.19	0.40	
25,472.00	89.22	273.21	7,930.56	-228.86	-18,025.40	18,026.85	0.39	0.30	-0.25	
25,561.00	89.00	272.29	7,931.94	-224.60	-18,114.29	18,115.68	1.06	-0.25	-1.03	
25,650.00	89.75	272.77	7,932.91	-220.67	-18,203.19	18,204.53	1.00	0.84	0.54	
25,739.00	89.88	271.23	7,933.20	-217.56	-18,292.14	18,293.43	1.74	0.15	-1.73	
25,828.00	89.48	269.55	7,933.70	-216.96	-18,381.13	18,382.41	1.94	-0.45	-1.89	
25,917.00	90.01	269.82	7,934.09	-217.44	-18,470.13	18,471.41	0.67	0.60	0.30	
26,006.00	89.66	270.04	7,934.35	-217.55	-18,559.13	18,560.40	0.46	-0.39	0.25	
26,095.00	89.09	269.47	7,935.32	-217.93	-18,648.12	18,649.39	0.91	-0.64	-0.64	
26,184.00	88.56	269.64	7,937.15	-218.62	-18,737.10	18,738.37	0.63	-0.60	0.19	
26,273.00	89.22	269.91	7,938.87	-218.97	-18,826.08	18,827.35	0.80	0.74	0.30	
26,362.00	88.78	269.20	7,940.42	-219.67	-18,915.06	18,916.34	0.94	-0.49	-0.80	
26,451.00	90.28	269.51	7,941.15	-220.67	-19,004.05	19,005.33	1.72	1.69	0.35	
26,540.00	89.75	269.03	7,941.13	-221.80	-19,093.04	19,094.33	0.80	-0.60	-0.54	
26,629.00	89.66	268.94	7,941.59	-223.38	-19,182.03	19,183.33	0.14	-0.10	-0.10	
26,718.00	89.31	269.33	7,942.39	-224.72	-19,271.02	19,272.32	0.59	-0.39	0.44	
26,807.00	89.40	270.61	7,943.39	-224.77	-19,360.01	19,361.31	1.44	0.10	1.44	
26,896.00	89.00	269.86	7,944.63	-224.40	-19,449.00	19,450.29	0.95	-0.45	-0.84	
26,985.00	88.64	269.95	7,946.47	-224.55	-19,537.98	19,539.27	0.42	-0.40	0.10	
27,074.00	90.41	270.21	7,947.20	-224.43	-19,626.97	19,628.25	2.01	1.99	0.29	
27,163.00	89.97	269.51	7,946.91	-224.64	-19,715.97	19,717.25	0.93	-0.49	-0.79	
27,252.00	89.48	268.14	7,947.34	-226.47	-19,804.95	19,806.24	1.63	-0.55	-1.54	
27,341.00	89.09	267.00	7,948.45	-230.24	-19,893.86	19,895.19	1.35	-0.44	-1.28	
27,430.00	90.01	270.21	7,949.15	-232.41	-19,982.82	19,984.17	3.75	1.03	3.61	
27,519.00	89.35	269.07	7,949.64	-232.97	-20,071.81	20,073.16	1.48	-0.74	-1.28	
27,608.00	89.04	268.85	7,950.89	-234.58	-20,160.79	20,162.15	0.43	-0.35	-0.25	
27,697.00	88.51	267.84	7,952.80	-237.15	-20,249.73	20,251.12	1.28	-0.60	-1.13	
27,786.00	90.06	269.03	7,953.91	-239.58	-20,338.69	20,340.10	2.20	1.74	1.34	
27,875.00	89.93	268.85	7,953.91	-241.23	-20,427.67	20,429.09	0.25	-0.15	-0.20	
27,964.00	89.79	268.98	7,954.13	-242.91	-20,516.65	20,518.09	0.21	-0.16	0.15	
28,052.00	89.75	267.97	7,954.48	-245.26	-20,604.62	20,606.08	1.15	-0.05	-1.15	
28,142.00	89.79	269.33	7,954.85	-247.38	-20,694.59	20,696.07	1.51	0.04	1.51	
28,230.00	89.31	269.64	7,955.54	-248.17	-20,782.59	20,784.07	0.65	-0.55	0.35	
28,319.00	88.91	269.11	7,956.92	-249.14	-20,871.57	20,873.06	0.75	-0.45	-0.60	
28,408.00	88.60	268.19	7,958.85	-251.23	-20,960.52	20,962.03	1.09	-0.35	-1.03	
LAST SURVEY - 28408' MD, 7959' TVD										
28,481.00	88.60	268.19	7,960.64	-253.54	-21,033.47	21,034.99	0.00	0.00	0.00	
PTB - 28481' MD, 7961' TVD, 1007' FSL, 607' FWL SEC 13										

Civitas Resources

Survey Report

Company:	CRESTONE PEAK RESOURCES	Local Co-ordinate Reference:	Well QUICKSILVER 3-65 16-17-18-13 4AH
Project:	ADAMS COUNTY	TVD Reference:	KB 25' @ 5531.00usft
Site:	SEC 15-T3S-R65W	MD Reference:	KB 25' @ 5531.00usft
Well:	QUICKSILVER 3-65 16-17-18-13 4AH	North Reference:	True
Wellbore:	OWB	Survey Calculation Method:	Minimum Curvature
Design:	FINAL SURVEY	Database:	EDM

Survey	Measured Depth (usft)	Inclination (°)	Azimuth (°)	Vertical Depth (usft)	+N/-S (usft)	+E/-W (usft)	Vertical Section (usft)	Dogleg Rate (°/100ft)	Build Rate (°/100ft)	Turn Rate (°/100ft)

Design Targets									
Target Name	Dip Angle (°)	Dip Dir. (°)	TVD (usft)	+N/-S (usft)	+E/-W (usft)	Northing (usft)	Easting (usft)	Latitude	Longitude
LP-QS 3-65 16-17-18-13 - hit/miss target - Shape	0.00	0.00	7,770.00	-307.79	-661.55	1,166,158.50	3,236,104.13	39.786404°N	104.659852°W
- actual wellpath misses target center by 2.66usft at 8098.47usft MD (7771.94 TVD, -305.97 N, -661.40 E)									
- Point									
PBHL-QS 3-65 16-17-18-13 - hit/miss target - Shape	0.00	0.00	7,940.00	-230.07	-21,040.68	1,166,042.60	3,215,725.40	39.786593°N	104.732367°W
- actual wellpath misses target center by 32.07usft at 28481.00usft MD (7960.64 TVD, -253.54 N, -21033.46 E)									
- Point									

Design Annotations					
Measured Depth (usft)	Vertical Depth (usft)	Local Coordinates +N/-S (usft)	Local Coordinates +E/-W (usft)	Comment	
3,349.00	3,344.58	-138.41	-17.47	SURFACE CSG - 3349' MD, 3345' TVD	
7,148.00	7,139.18	-298.93	-64.72	KOP - 7148' MD, 7139' TVD	
8,095.00	7,771.74	-306.06	-657.93	HZ LANDING PNT - 8095' MD, 7772' TVD,	
8,098.62	7,771.95	-305.97	-661.55	~150' X-OVER PNT - 8098.62' MD, 7772' TVD, 1032' FSL, 150' FEL SEC 16	
28,408.00	7,958.85	-251.23	-20,960.52	LAST SURVEY - 28408' MD, 7959' TVD	
28,481.00	7,960.64	-253.54	-21,033.47	PTB - 28481' MD, 7961' TVD, 1007' FSL, 607' FWL SEC 13	

Checked By: _____ Approved By: _____ Date: _____