

# Inspection Photos

Location Name: PAPPENHEIM USX AB-67N64W/13SWSW

Location #: 310329

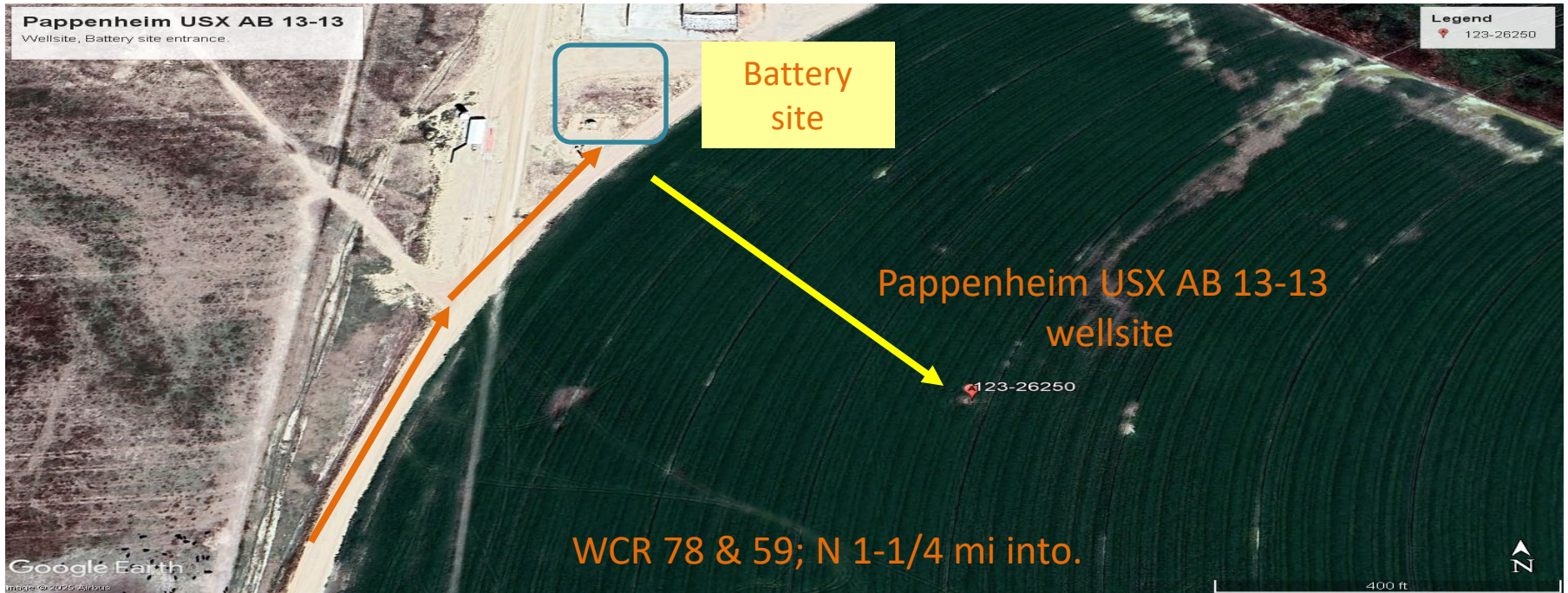


Photo #1

Pappenheim USX AB 13-13 Battery site

Inactive | Shut-down

Wellsite(s), Battery entrance



**COLORADO**

Energy & Carbon Management  
Commission

Department of Natural Resources

## Inspection Photos

Location Name: PAPPENHEIM USX AB-67N64W/13SWSW

Location #: 310329



**Photo #2**

**Pappenheim USX AB 13-13 Battery site**

**Inactive | Shut-down**

**Equipment documented: Loc. ID 310329**



**Photo #3**

**Pappenheim USX AB 13-13 Battery site**

**Inactive | Shut-down**

**Crude Oil tank(s), Produced H2O vault(s); SE corner**



**COLORADO**

**Energy & Carbon Management  
Commission**

Department of Natural Resources

# Inspection Photos

Location Name: PAPPENHEIM USX AB-67N64W/13SWSW

Location #: 310329



Colorado Energy & Carbon Management Commission  
Weld County  
+40.570058,-104.506654  
195° S  
2025-09-22 15:12

Photo #4

Pappenheim USX AB 13-13 Battery site

Inactive | Shut-down

Separator(s), ECD(s)



Colorado Energy & Carbon Management Commission  
Weld County  
+40.570058,-104.506654  
354° N  
2025-09-22 15:11

Photo #5

Pappenheim USX AB 13-13 Battery site

Inactive | Shut-down

Battery signage



**COLORADO**

Energy & Carbon Management  
Commission

Department of Natural Resources

## Inspection Photos

Location Name: PAPPENHEIM USX AB-67N64W/13SWSW

Location #: 310329

Associated Well(s)	API	Location	Status
1. Pappenheim USX AB 13-13	123-26250	310329	SI

### Photo #6

Pappenheim USX AB 13-13 Battery site

Inactive | Shut-down

Associated well(s)

1: Shut-In | SI



**COLORADO**

Energy & Carbon Management  
Commission

Department of Natural Resources