



**RADIAL BOND LOG  
GAMMA RAY  
CCL / VDL / MAP**

Company CHEVRON  
Well LEDFORD 22Y-401  
Field WATTENBERG - 90750  
County WELD  
State COLORADO  
Country U.S.A.

Company CHEVRON  
Well LEDFORD 22Y-401  
Field WATTENBERG - 90750  
County WELD  
State COLORADO  
Country U.S.A.

Location: 321' FSL & 268' FEL  
Qtr. Qtr. SESE  
APL #: 05-123-39618  
Other Services  
Permanent Datum Ground Level Elevation 4598'  
Log Measured From Kelly Bushing 13'  
Drilling Measured From Kelly Bushing 13'  
Elevation  
K.B. 4611'  
D.F. 4610'  
G.L. 4598'

Date	July 28, 2025	
Run Number	1	
Depth Driller	11110'	
Depth Logger	2550'	
Bottom Logged Interval	2541'	
Top Log Interval	Surface	
Open Hole Size	8-3/4"	
Type Fluid	Fresh Water	
Density / Viscosity	8.3#	
Max. Recorded Temp.	N/A	
Estimated Cement Top	N/A	
Time Well Ready	N/A	
Time Logger on Bottom	N/A	
Equipment Number	DSSHSR10-004	
Location	Milliken, CO	
Recorded By	J. Michael	
Witnessed By	Mr. Craig East	
Borehole Record		
Run Number	Bit	From To
Tubing Record		
Run Number	Size	Weight From To
Casing Record	Size	Wgt/Ft Top Bottom
Surface String	9-5/8"	36# J55 Surface 931'
Prot. String	7"	26# P110 Surface 7168'
Production String	4-1/2"	13.5# P110 Surface 5990'
Liner		

<<< Fold Here >>>

All interpretations are opinions based on inferences from electrical or other measurements and we cannot and do not guarantee the accuracy or correctness of any interpretation, and we shall not, except in the case of gross or willful negligence on our part, be liable or responsible for any loss, costs, damages, or expenses incurred or sustained by anyone resulting from any interpretation made by any of our officers, agents or employees. These interpretations are also subject to our general terms and conditions set out in our current Price Schedule.

**Comments**

**NO CORRELATION LOG AVAILABLE  
THANK YOU FOR CHOOSING RANGER WIRELINE**

Sensor	Offset (ft)	Schematic	Description	Length (ft)	O.D. (in)	Weight (lb)
			Cable_Head-1_7/16 Titan 1 7/16" Cable Head	1.02	1.44	3.31

			PROBE-1.688_bow Bowspring centralizer for 1 11/16" Probe CBL	3.17	1.69	10.00
CCL	0.00					
GR	0.97					
			DSS_HSR_ELE-DSS_HSR_10_ELE (HSR10 0000) DSS 1 11/16" HSR Bond tool - Electronics Module	5.99	1.69	27.50
ROTV	5.24					
TCF	5.24					
THV	5.24					
INTEMP	5.24		CENT-DSS-RAC11-MID (RAC11MID-0000) DSS 1 11/16" MID Roller Arm Centralizer	2.61	1.69	16.00
PNEG	5.24					
PPOS	5.24					
GRHV	5.24					
WVFS6	9.77					
WVFS5	9.77					
WVFS4	9.77					
WVFS3	9.77					
WVFS2	9.77					
WVFS1	9.77		DSS_HSR_SND-DSS_HSR_10_SND (HSR10 0000) DSS 1 11/16" HSR Bond tool - Sonde Module	8.26	1.69	41.50
WVFCAL	10.27					
WVF3FT	10.27					
WVF5FT	11.27					
TEMP	15.77					
WVFSYNC	16.11					
			PROBE-1.688_bow Bowspring centralizer for 1 11/16" Probe CBL	3.17	1.69	10.00

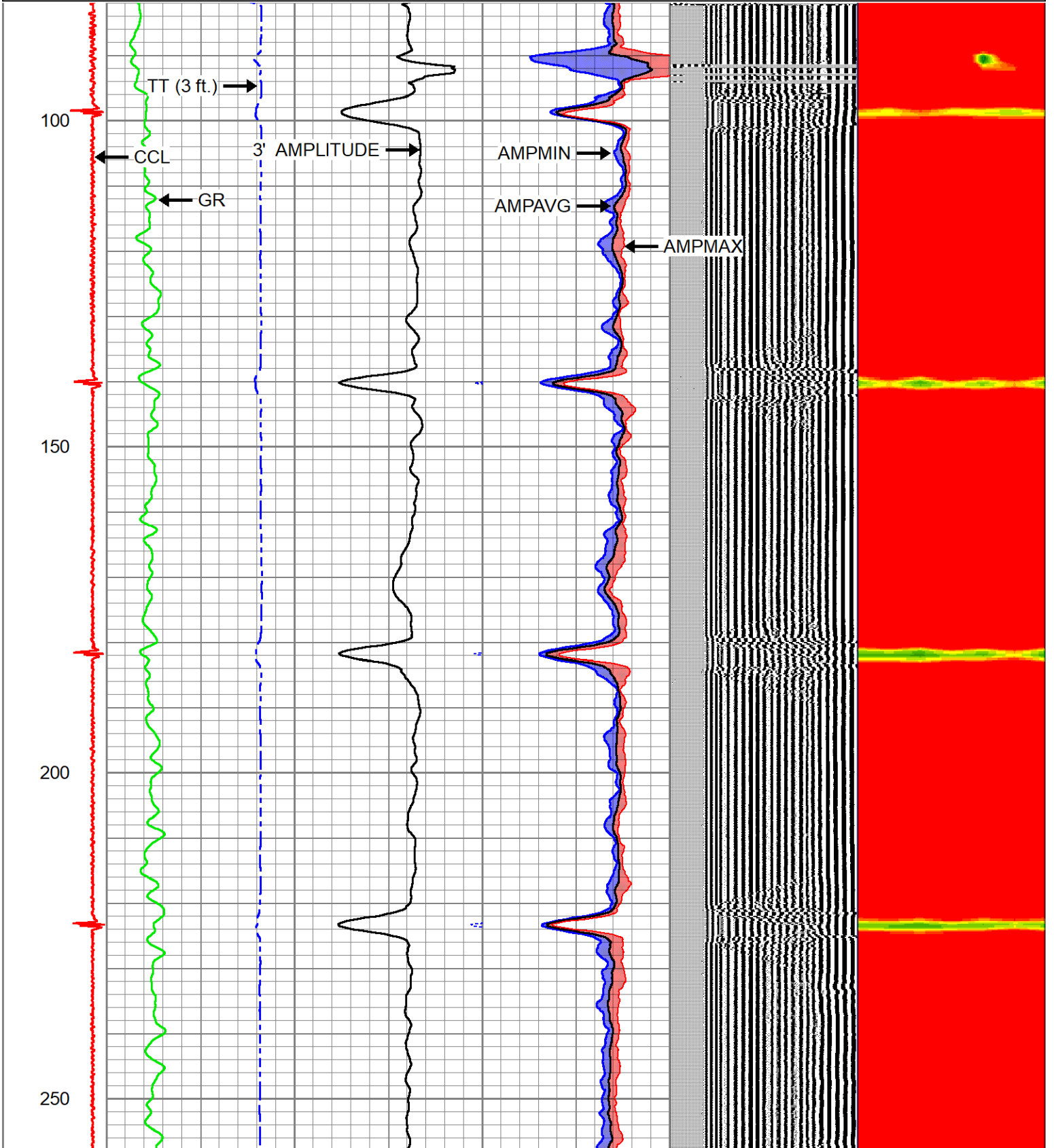
Dataset: rbl-ledford 22y-401.db: WATTENBERG-90750/LEDFOORD\_22Y-401/DSS\_HSR10-004/RBL\_WPSI.2  
 Total length: 24.21 ft  
 Total weight: 108.31 lb  
 O.D.: 1.69 in

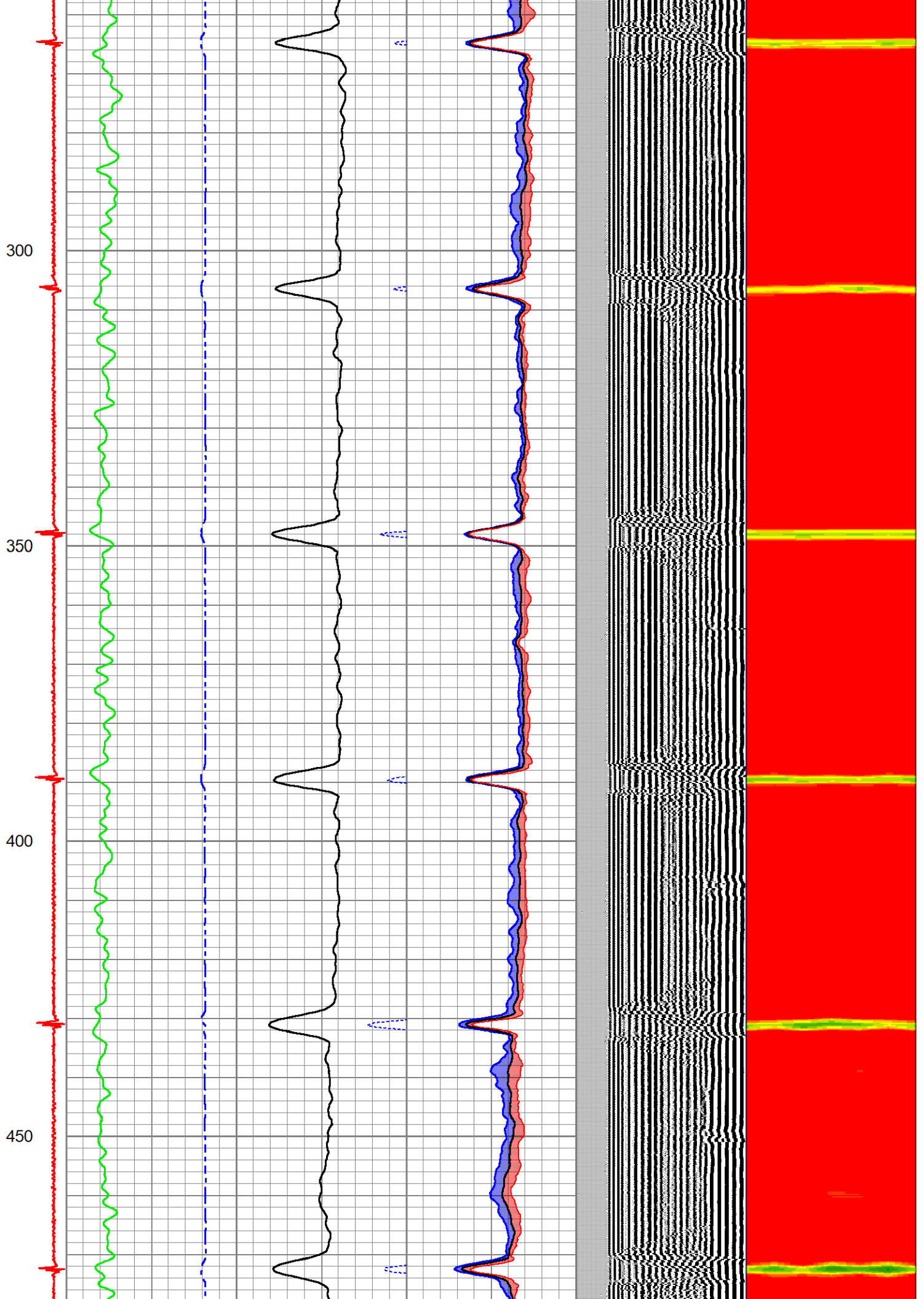


# NON-PRESSURE PASS

Database File rbl-ledford 22y-401.db  
 Dataset Pathname WATTENBERG-90750/LEDFOORD\_22Y-401/DSS\_HSR10-004/RBL.2  
 Presentation Format ranger\_dss\_radial  
 Dataset Creation Mon Jul 28 17:13:22 2025  
 Charted by Depth in Feet scaled 1:240

CCL	TT (3 ft.)	3' AMPLITUDE	0	AMPMIN	100	VDL (5 ft.)	1	RADIAL MAP	6
-120015000	375 (usec) 250	0 (mV) 100	0	AMPAVG	100	200 (usec) 1200	4		50
	0 GR (GAPI) 150	3' Amplitude x5	0	AMPMAX	100				
		0 (mV) 25							





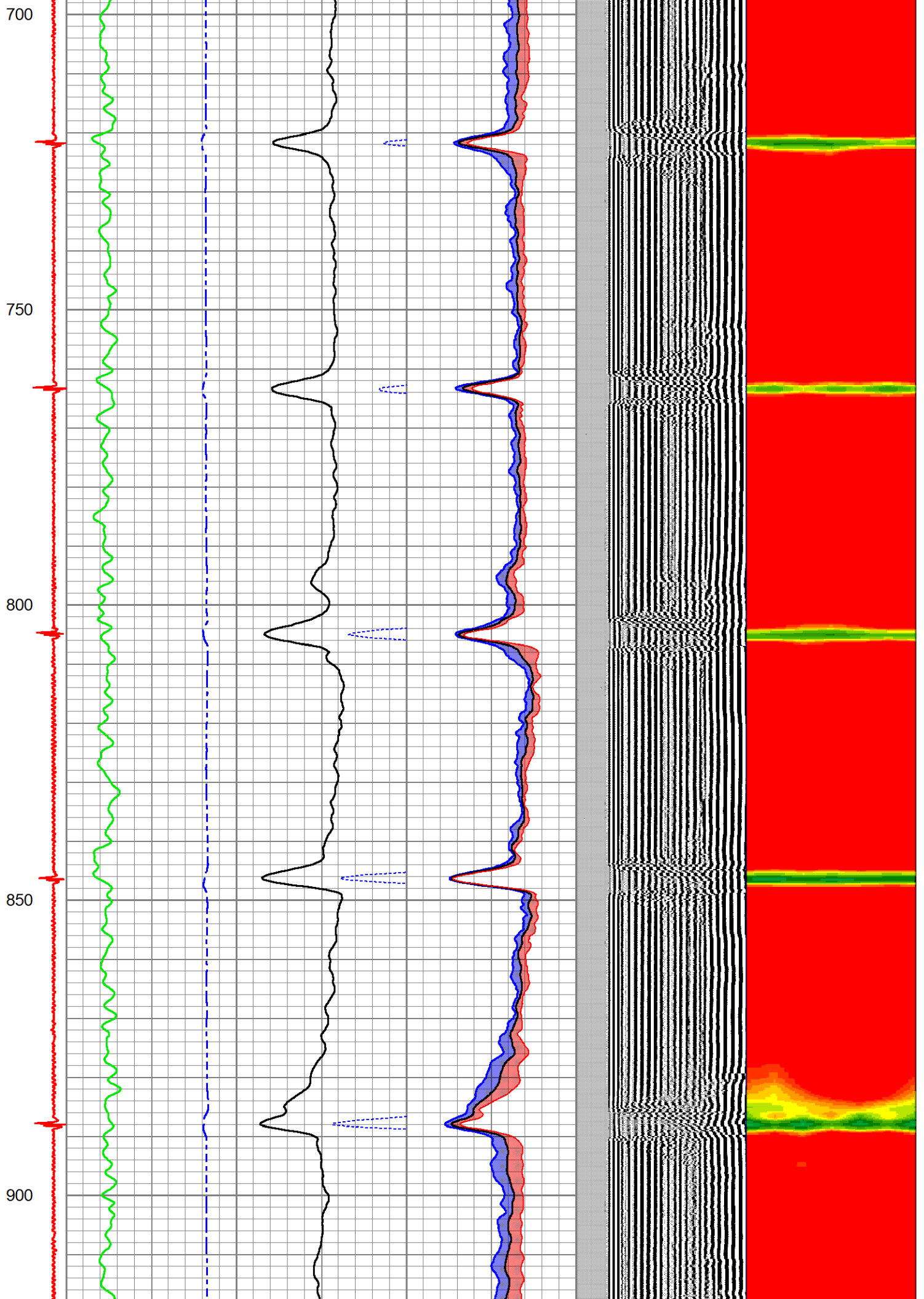
500

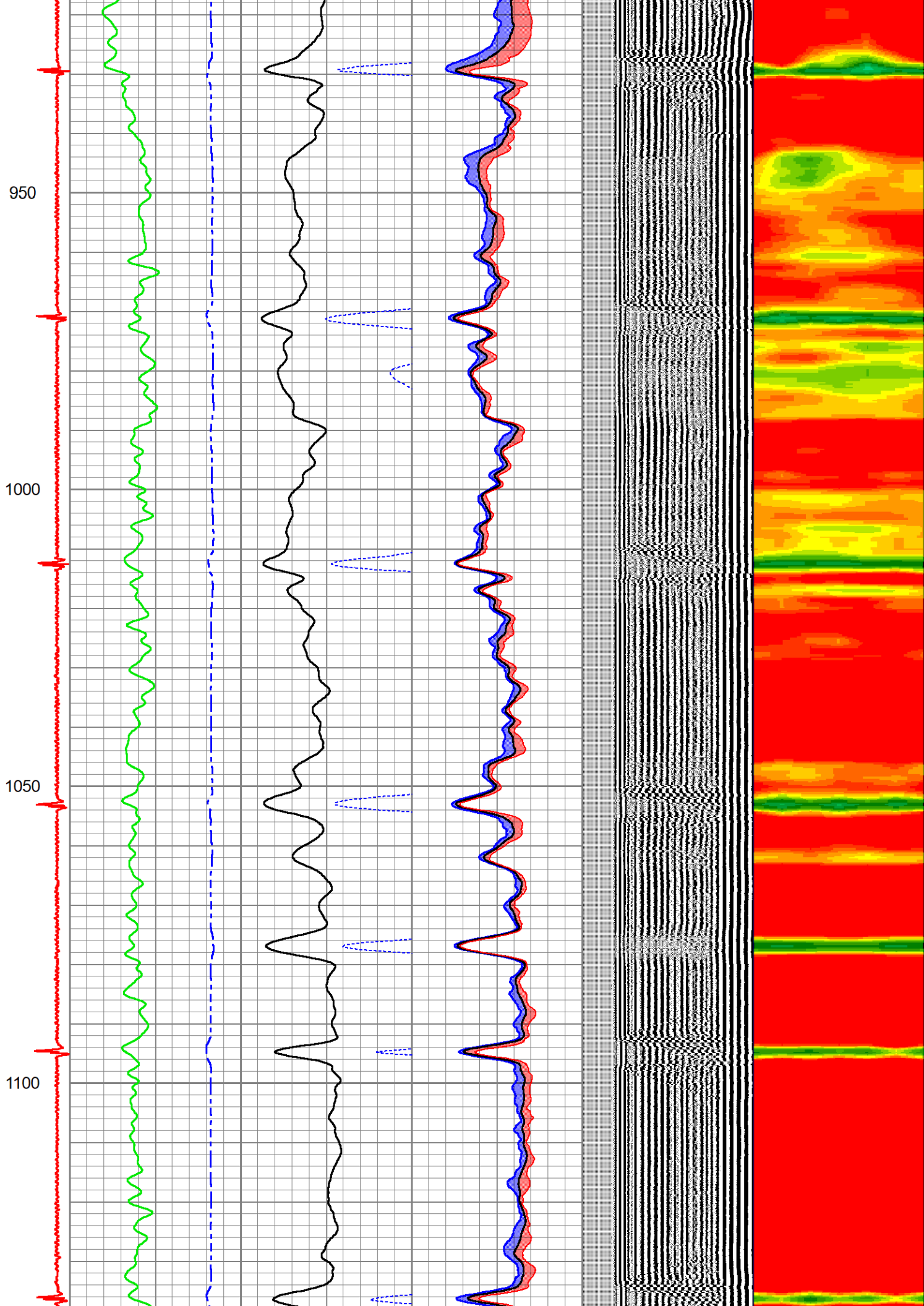
550

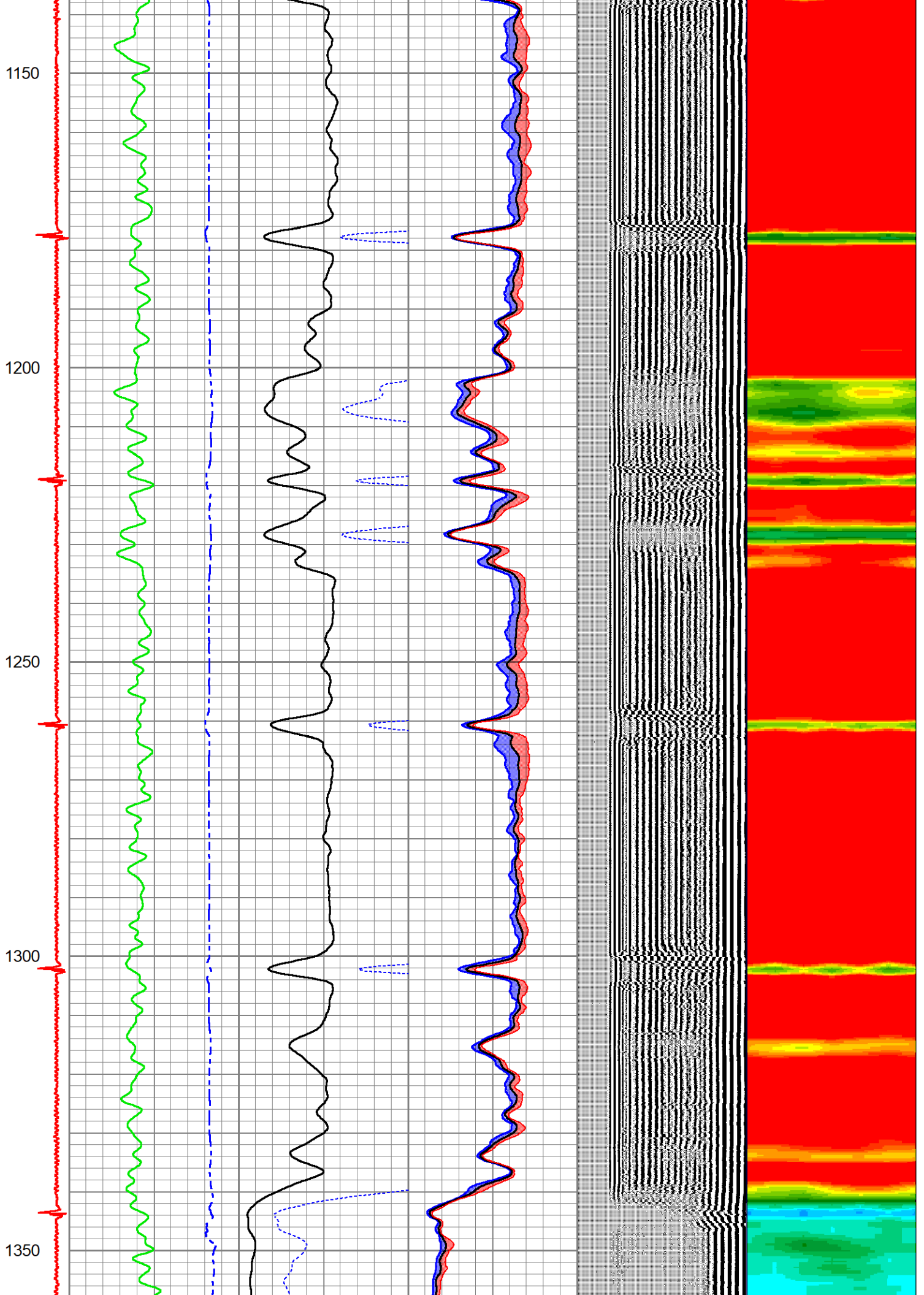
600

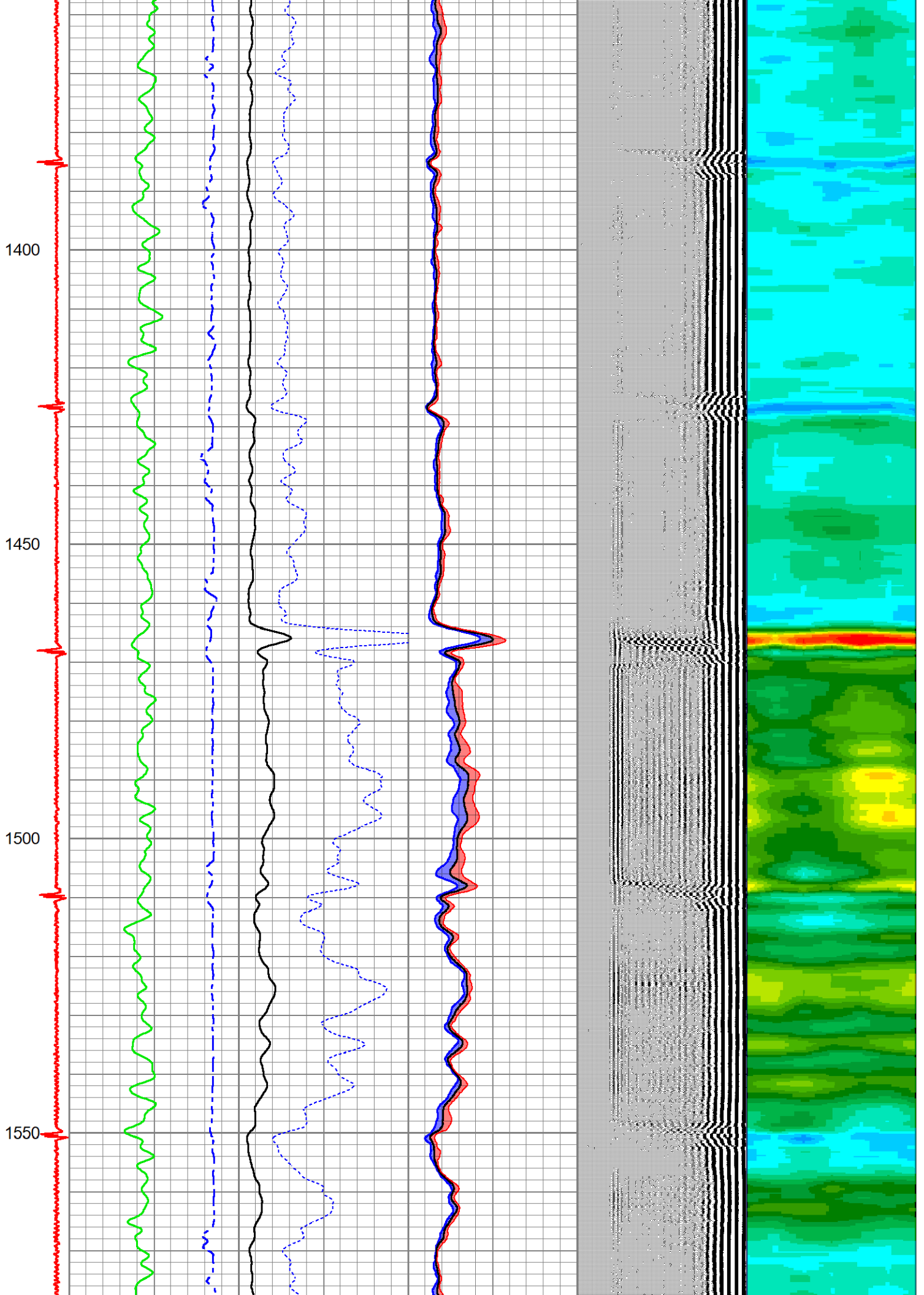
650

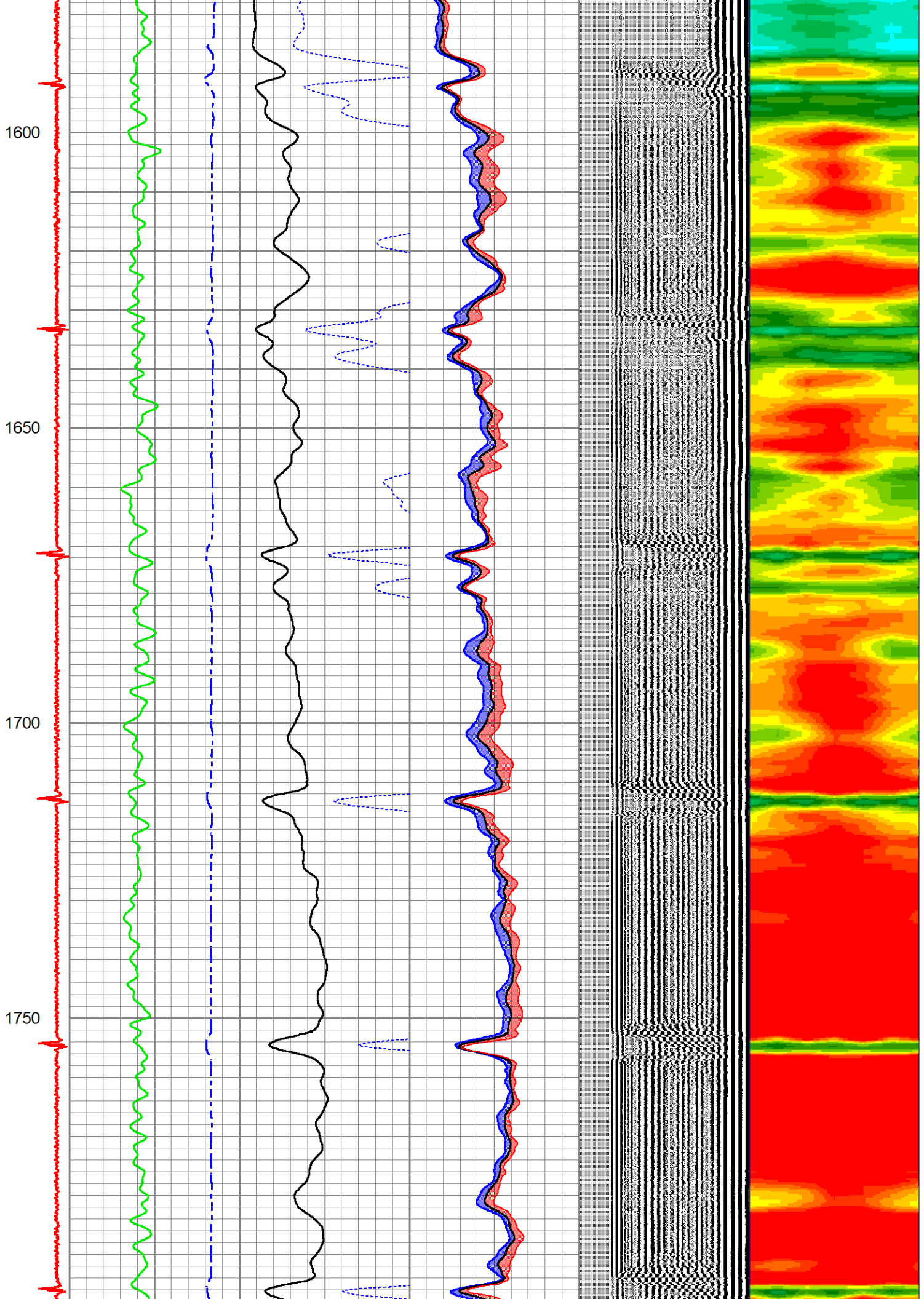


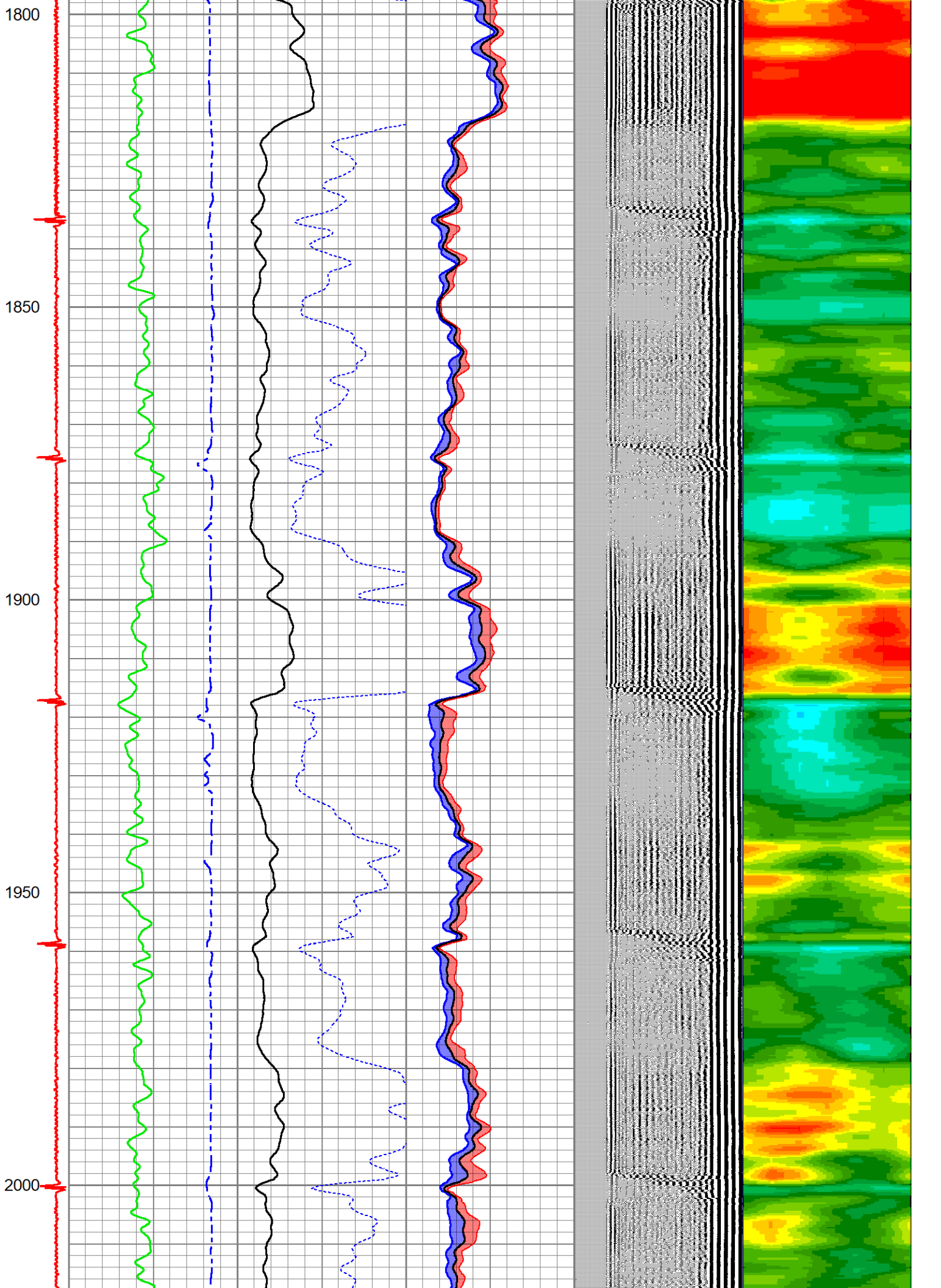


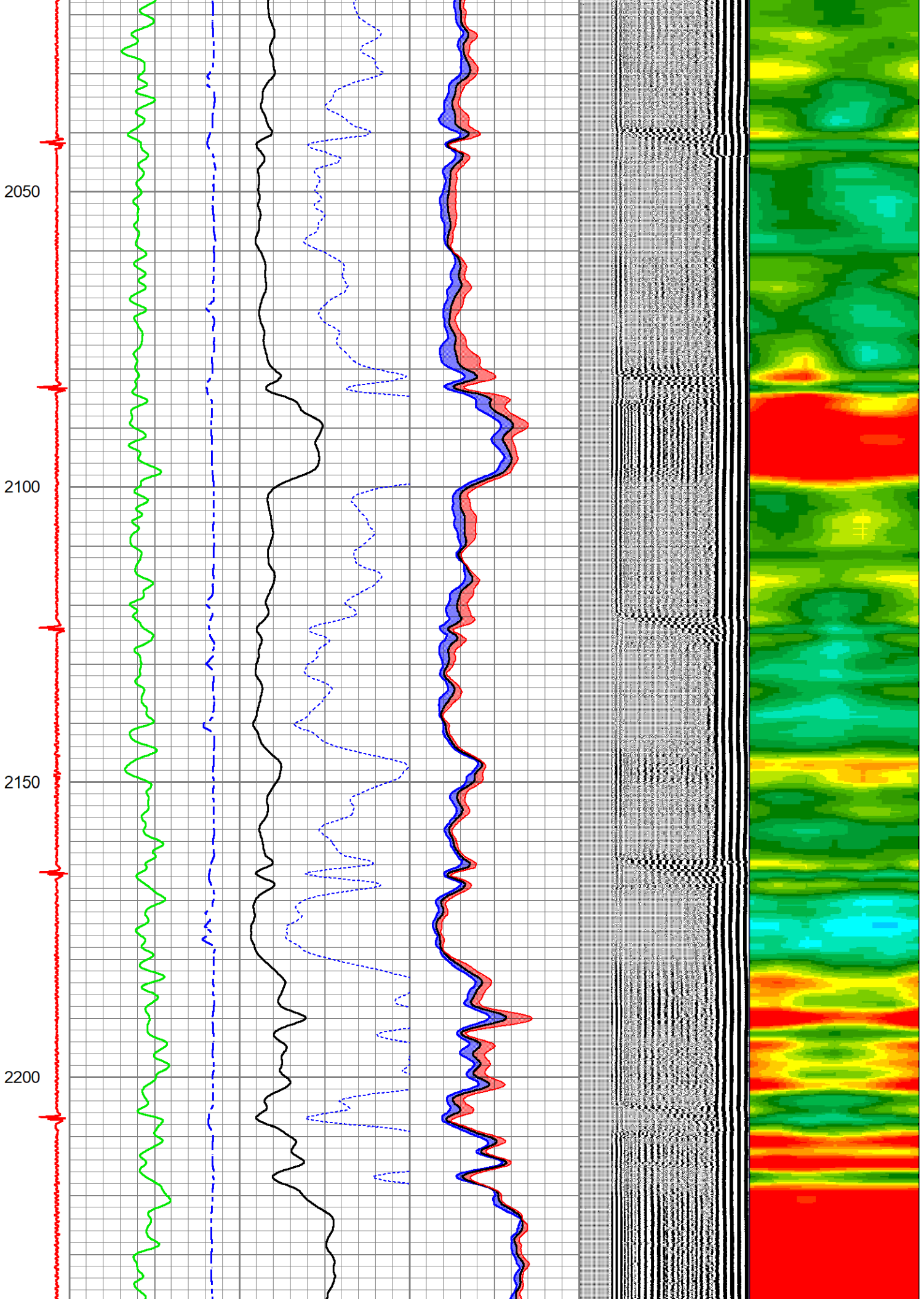


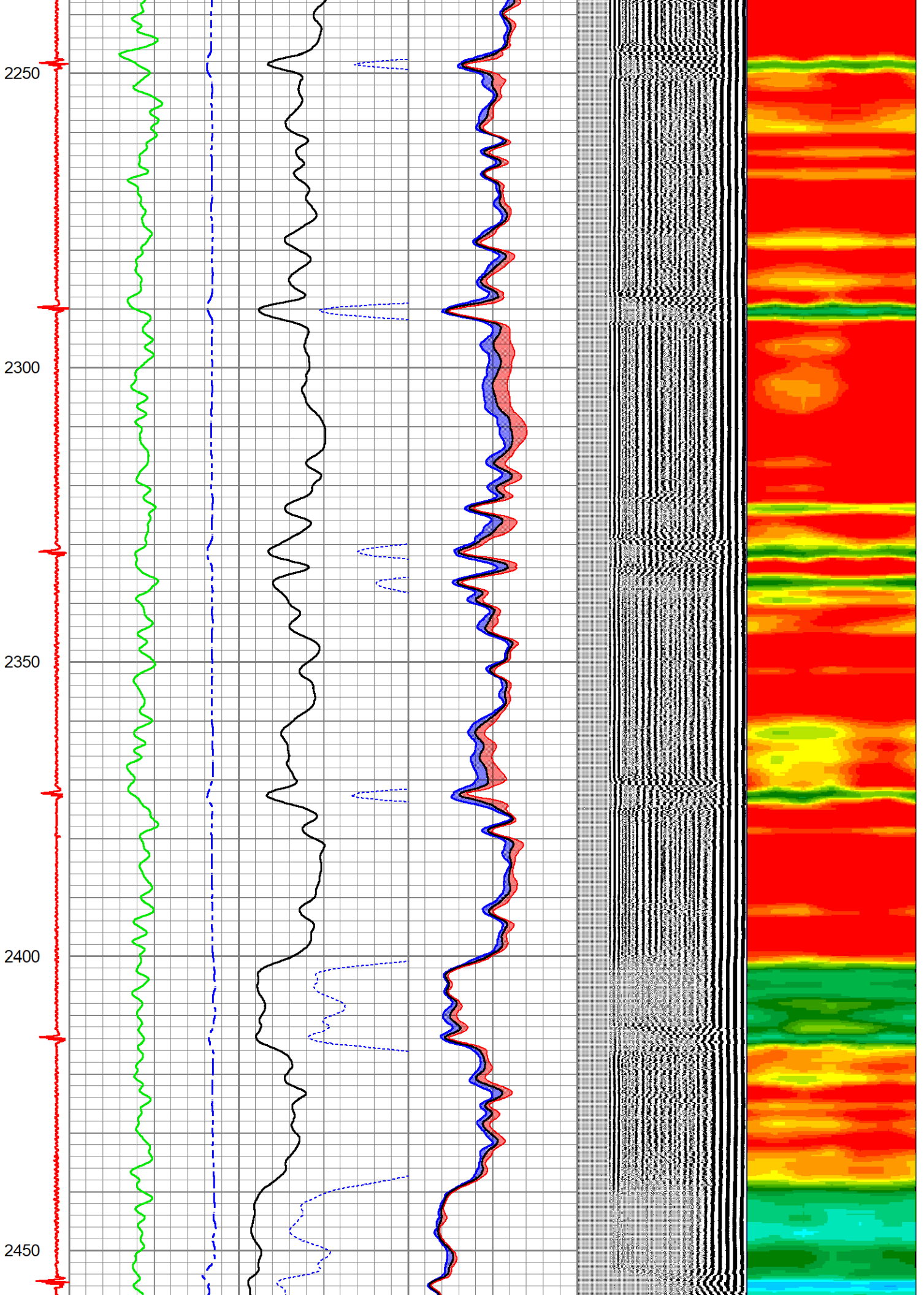


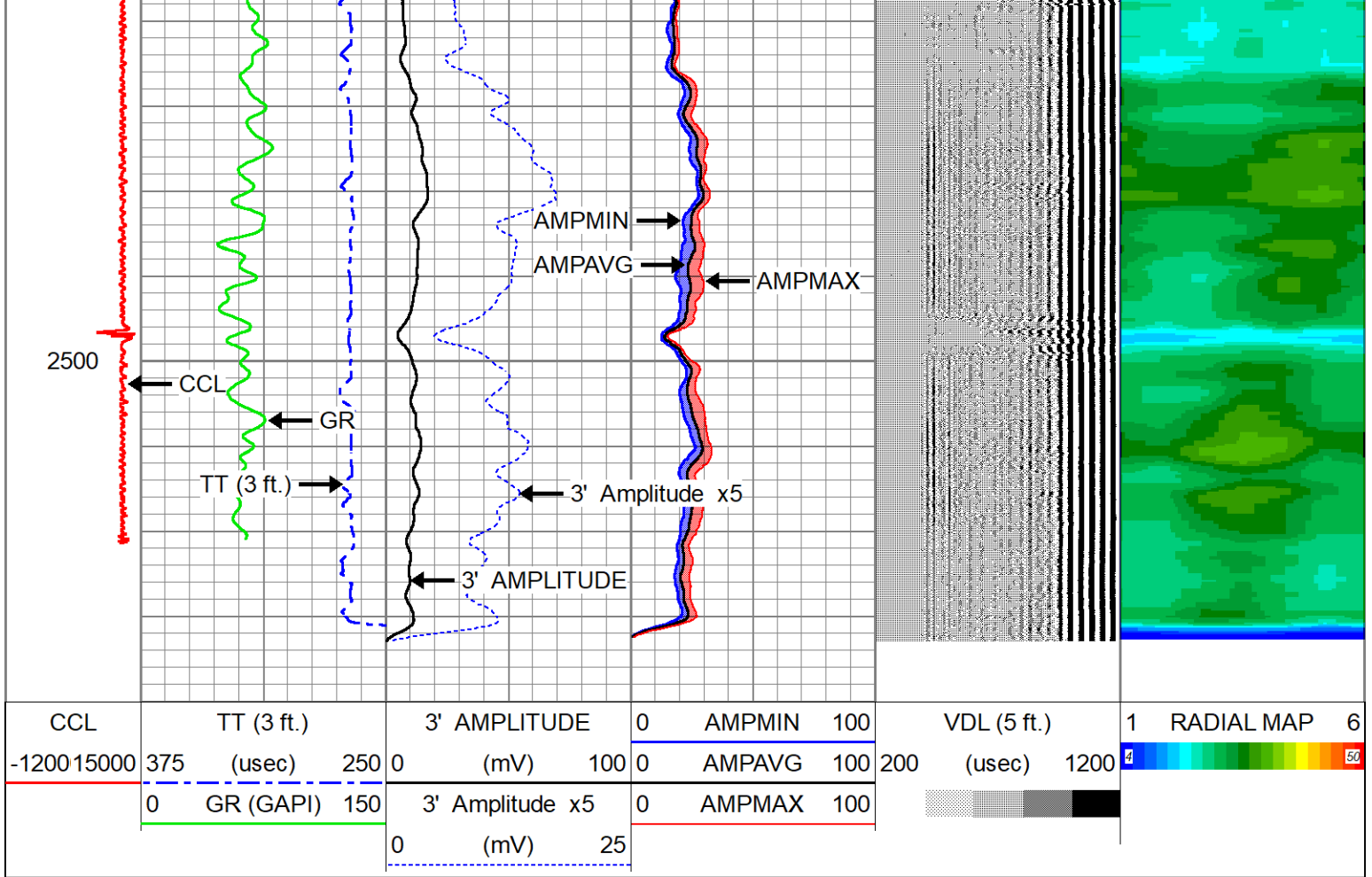






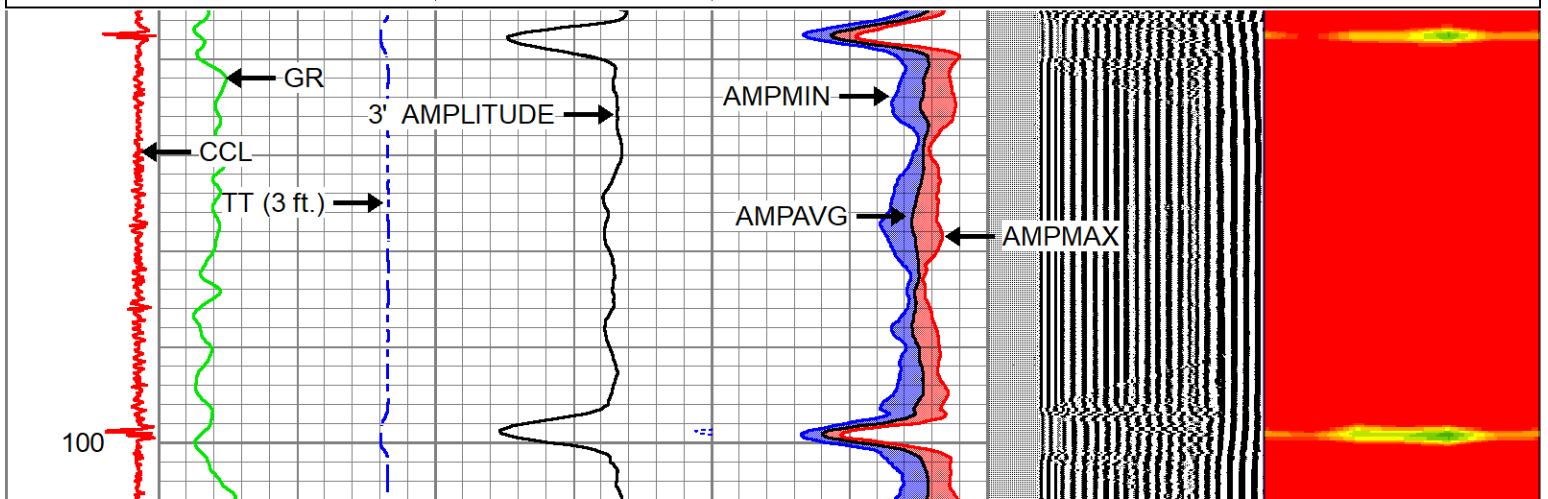
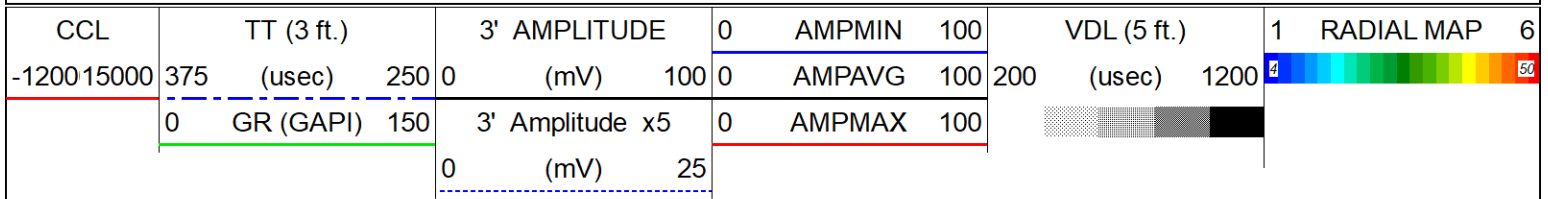


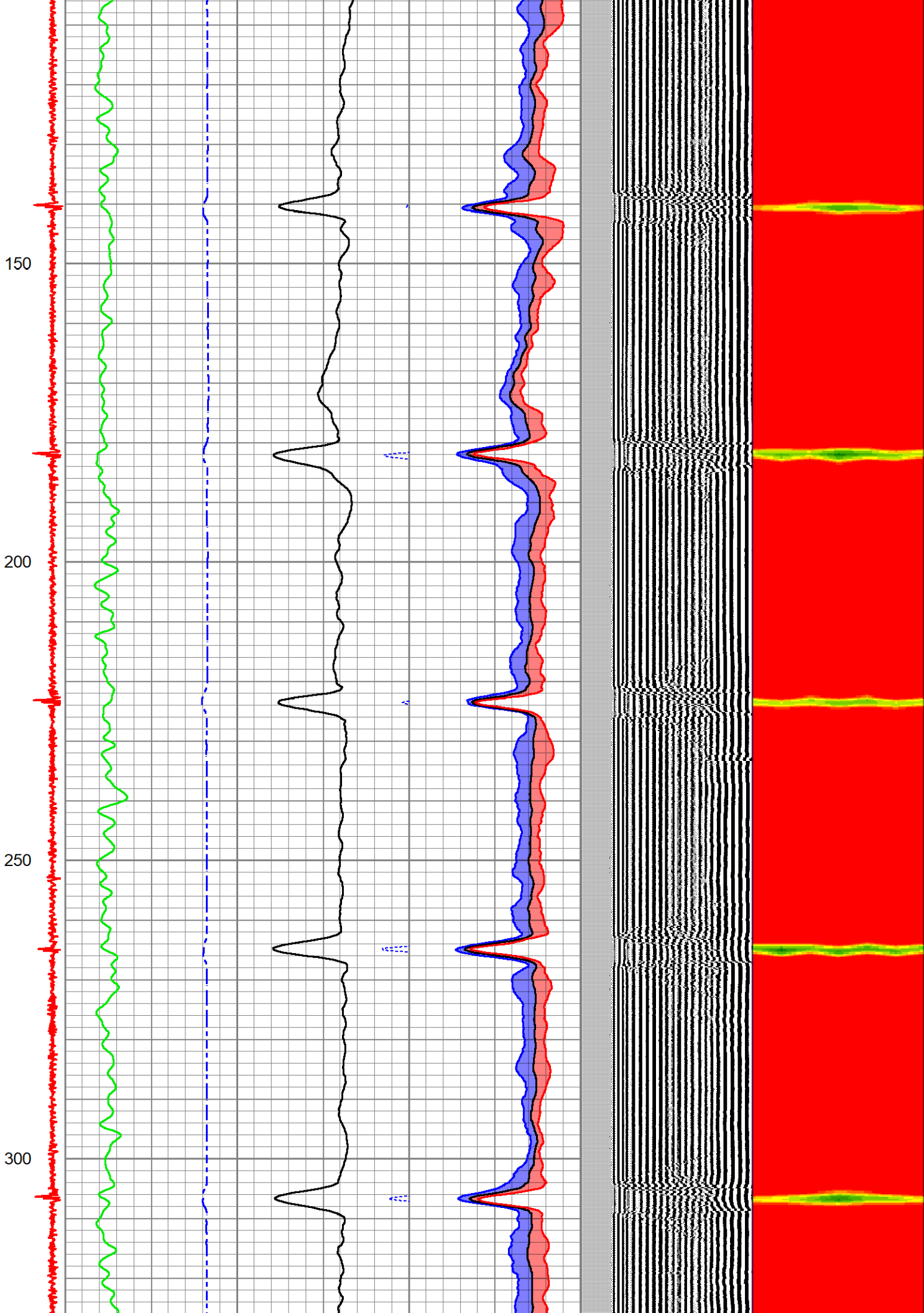


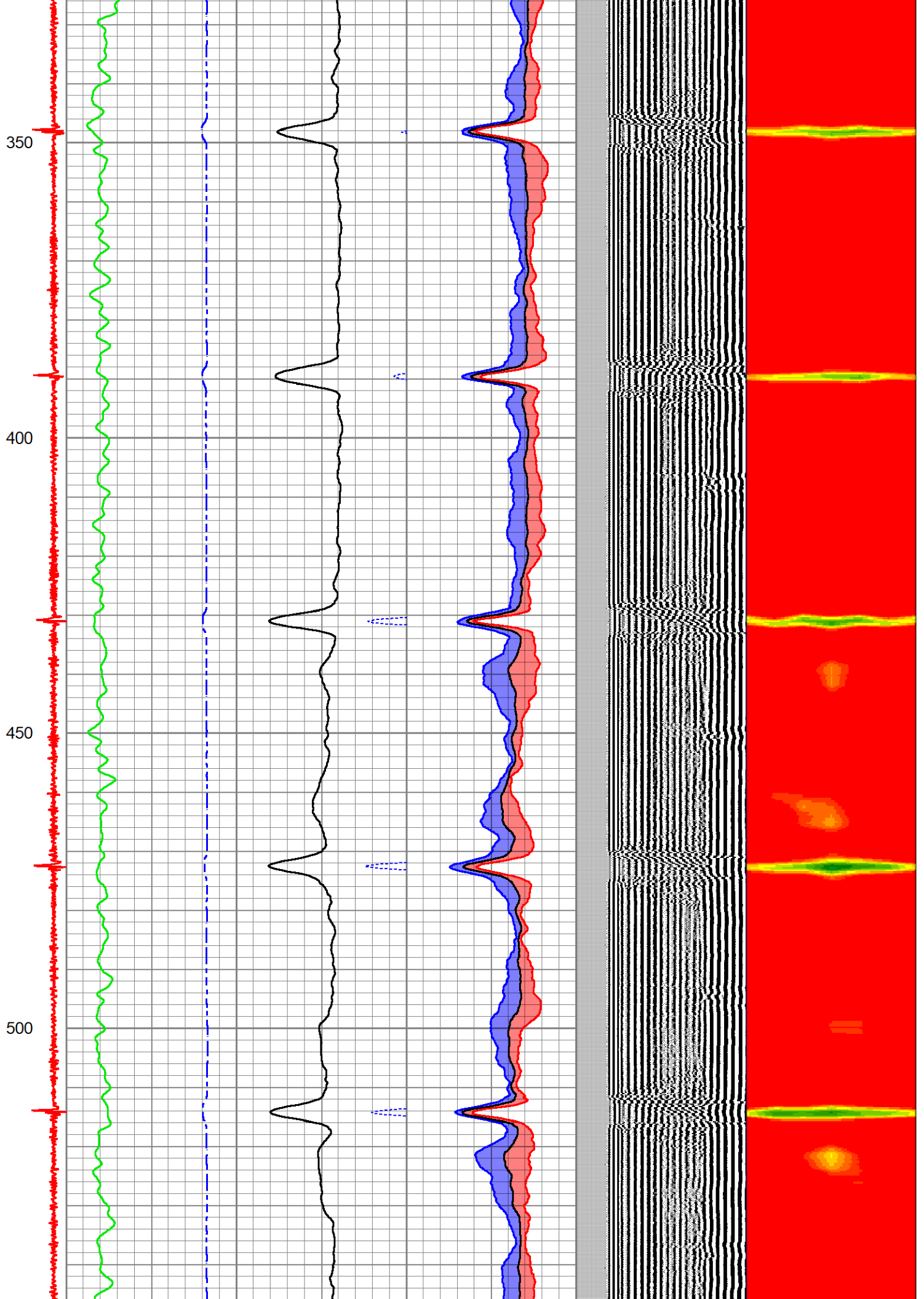


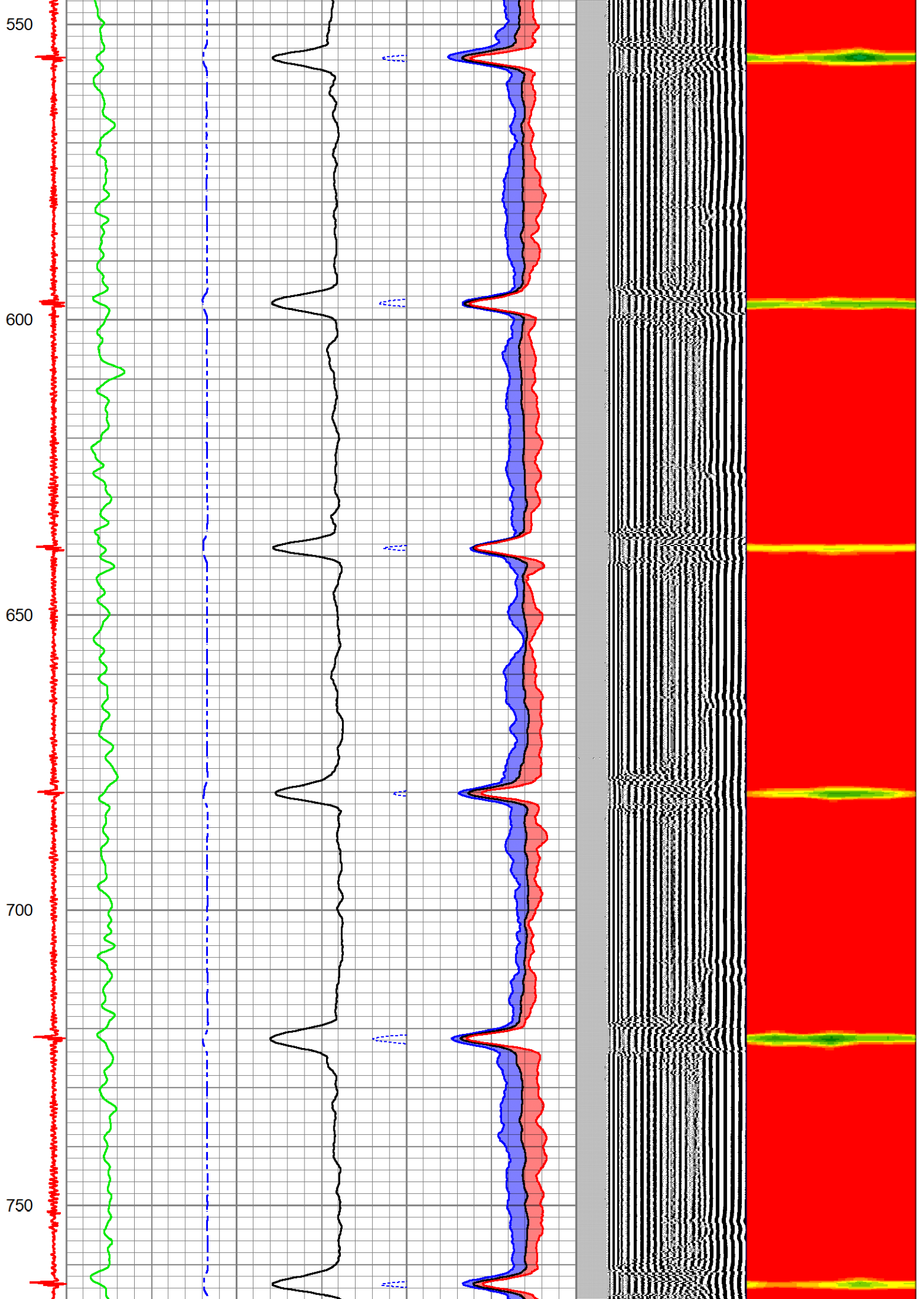
# PRESSURE PASS - 1000psi

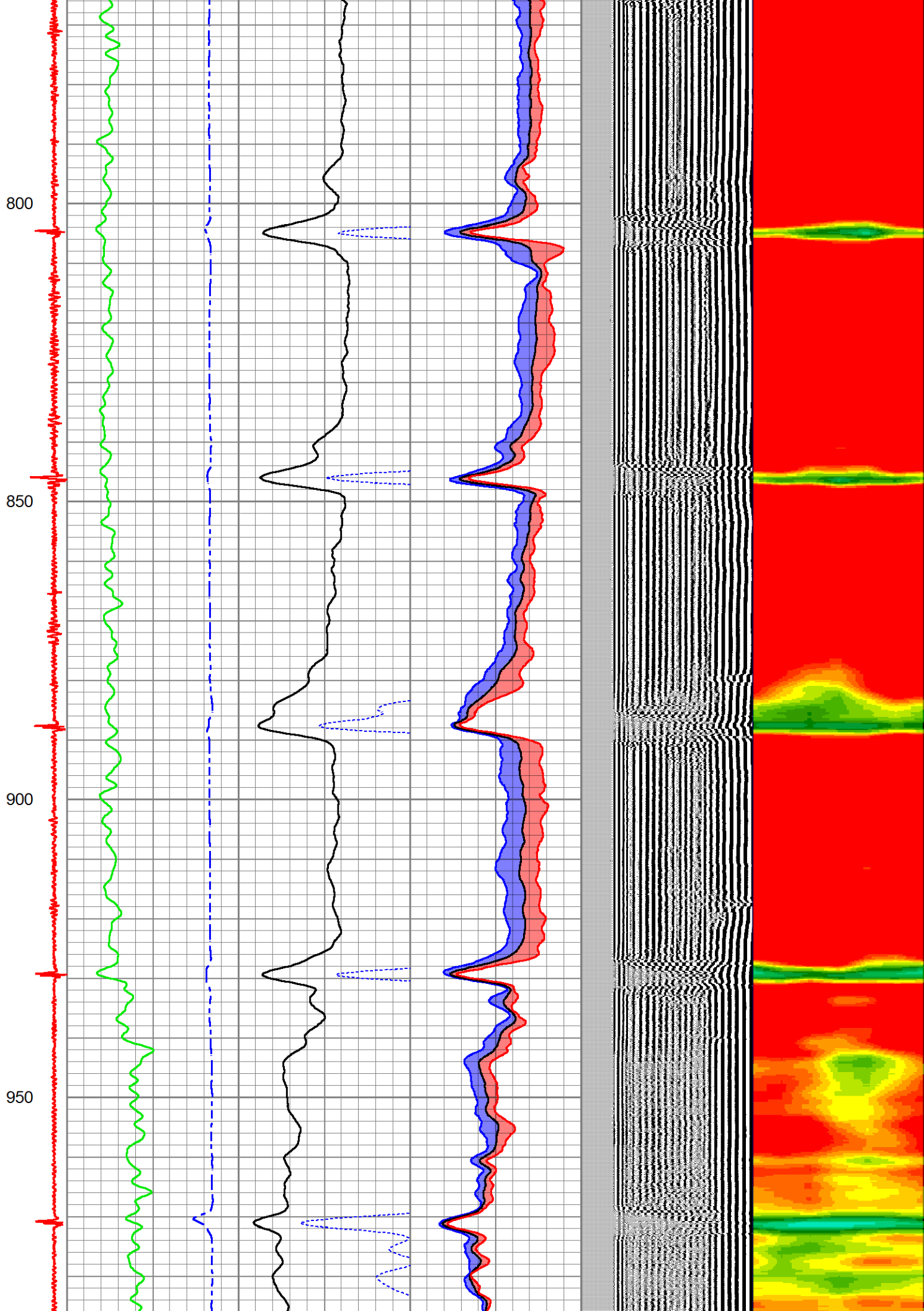
Database File: rbl-ledford 22y-401.db  
 Dataset Pathname: WATTENBERG-90750/LEDFOORD\_22Y-401/DSS\_HSR10-004/RBL\_WPSI.2  
 Presentation Format: ranger\_dss\_radial  
 Dataset Creation: Mon Jul 28 18:01:43 2025  
 Charted by: Depth in Feet scaled 1:240

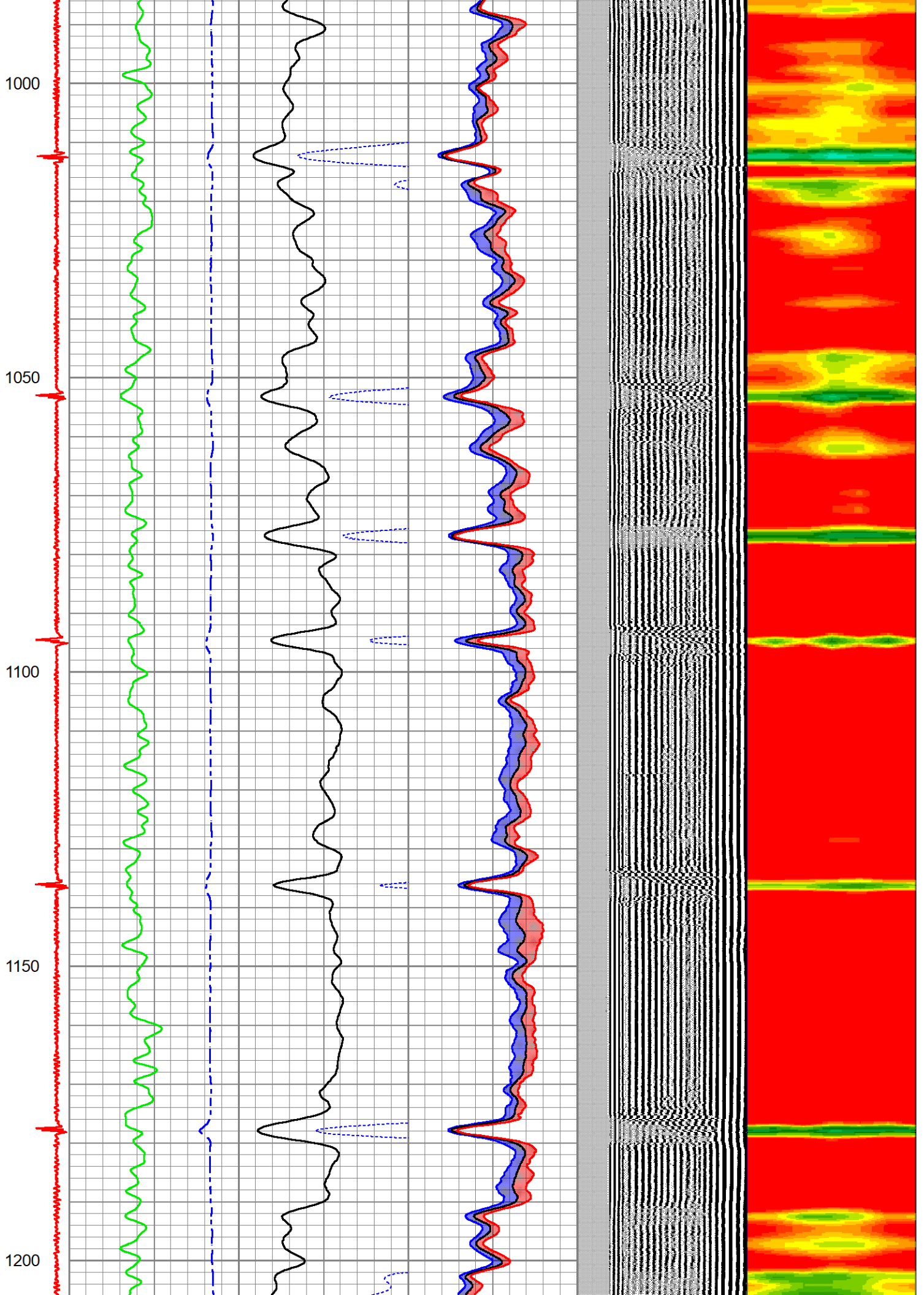


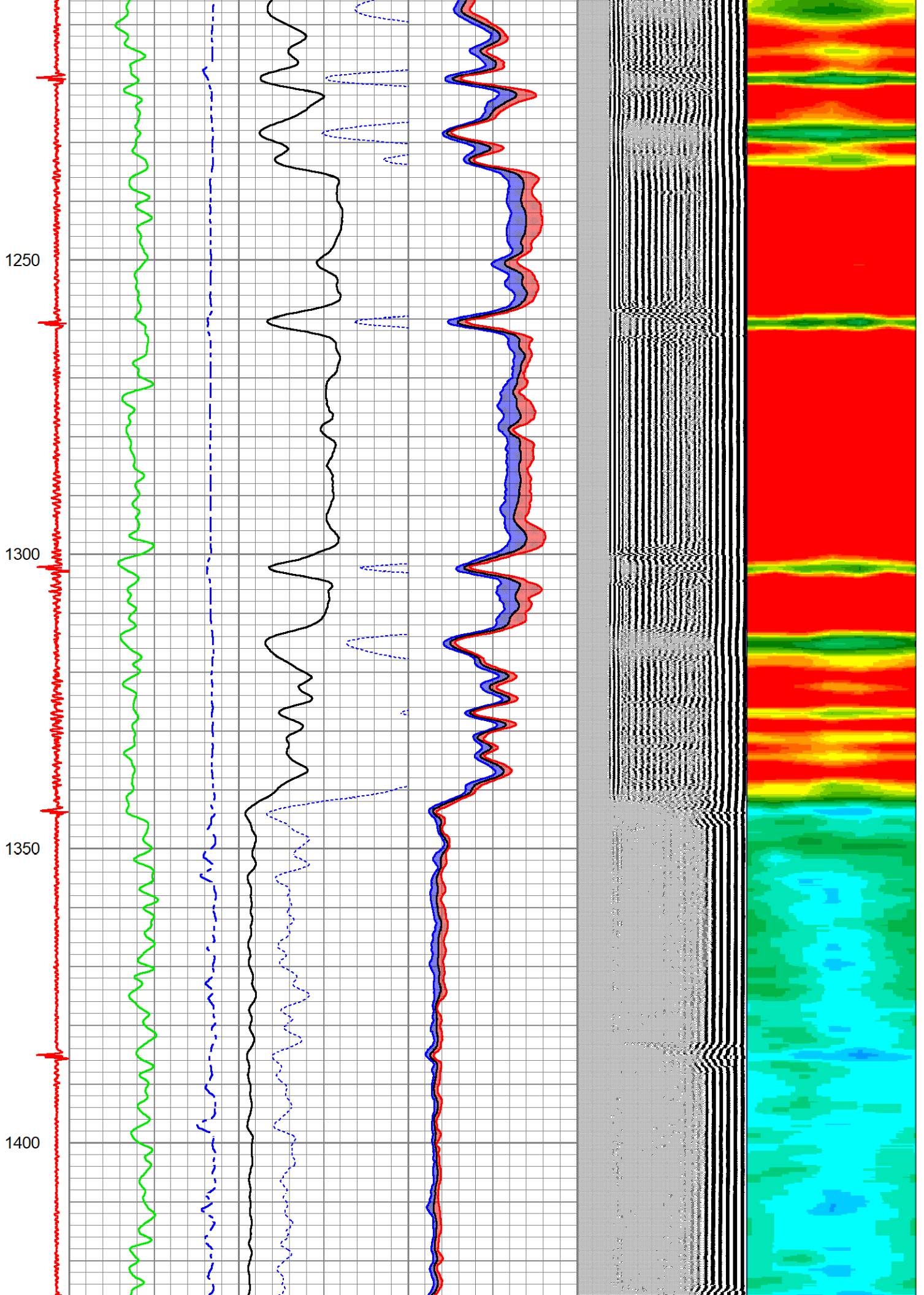


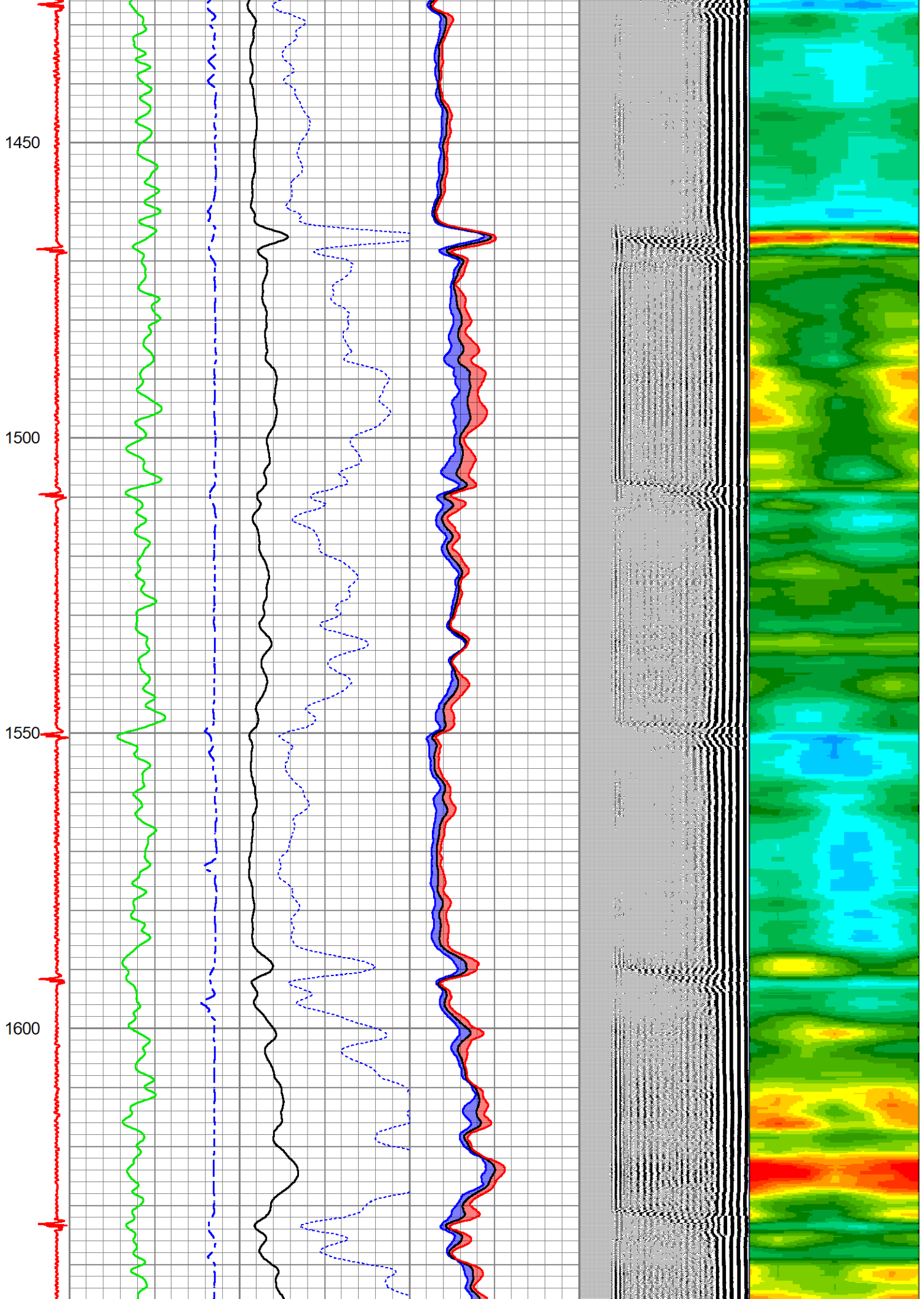


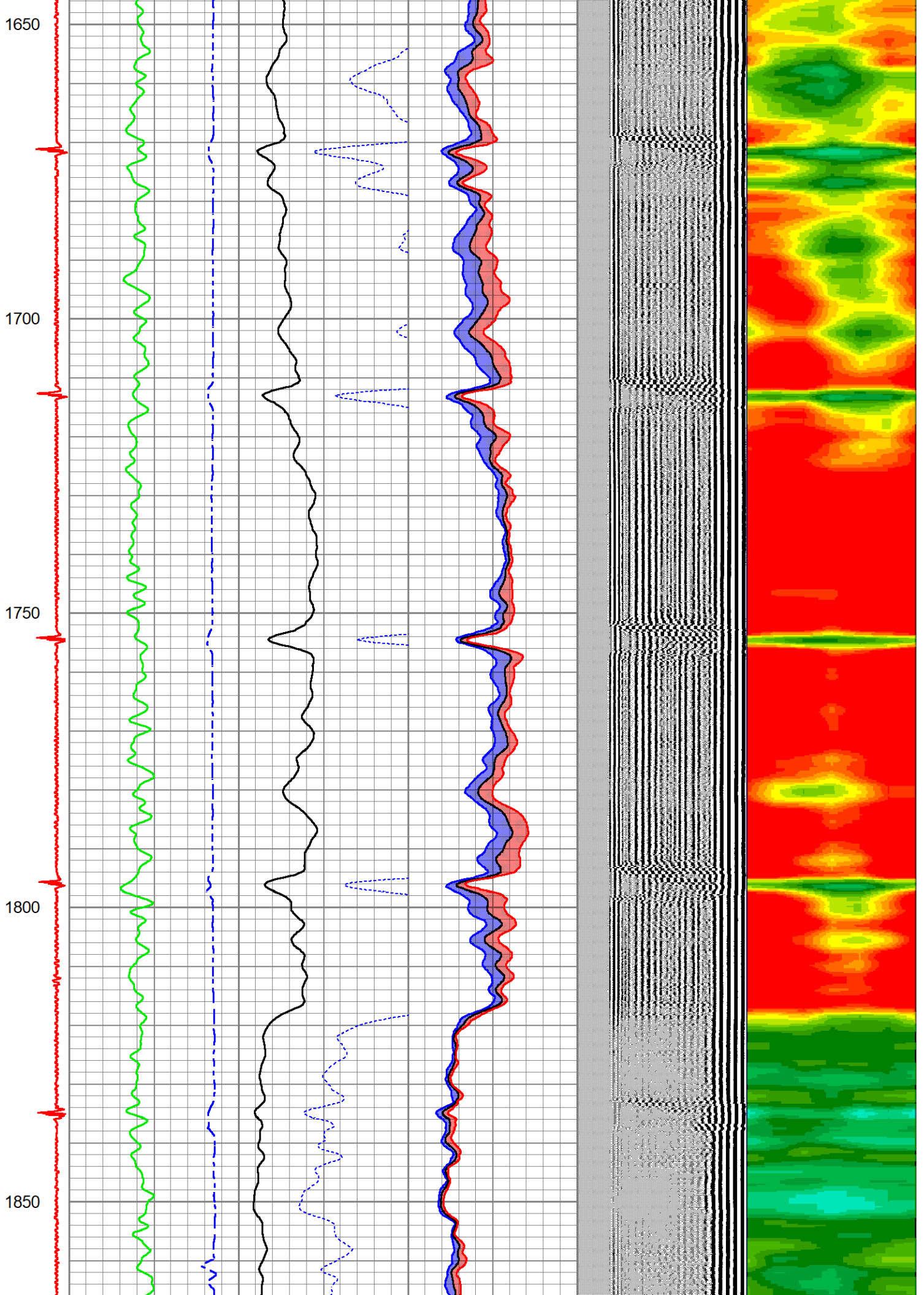


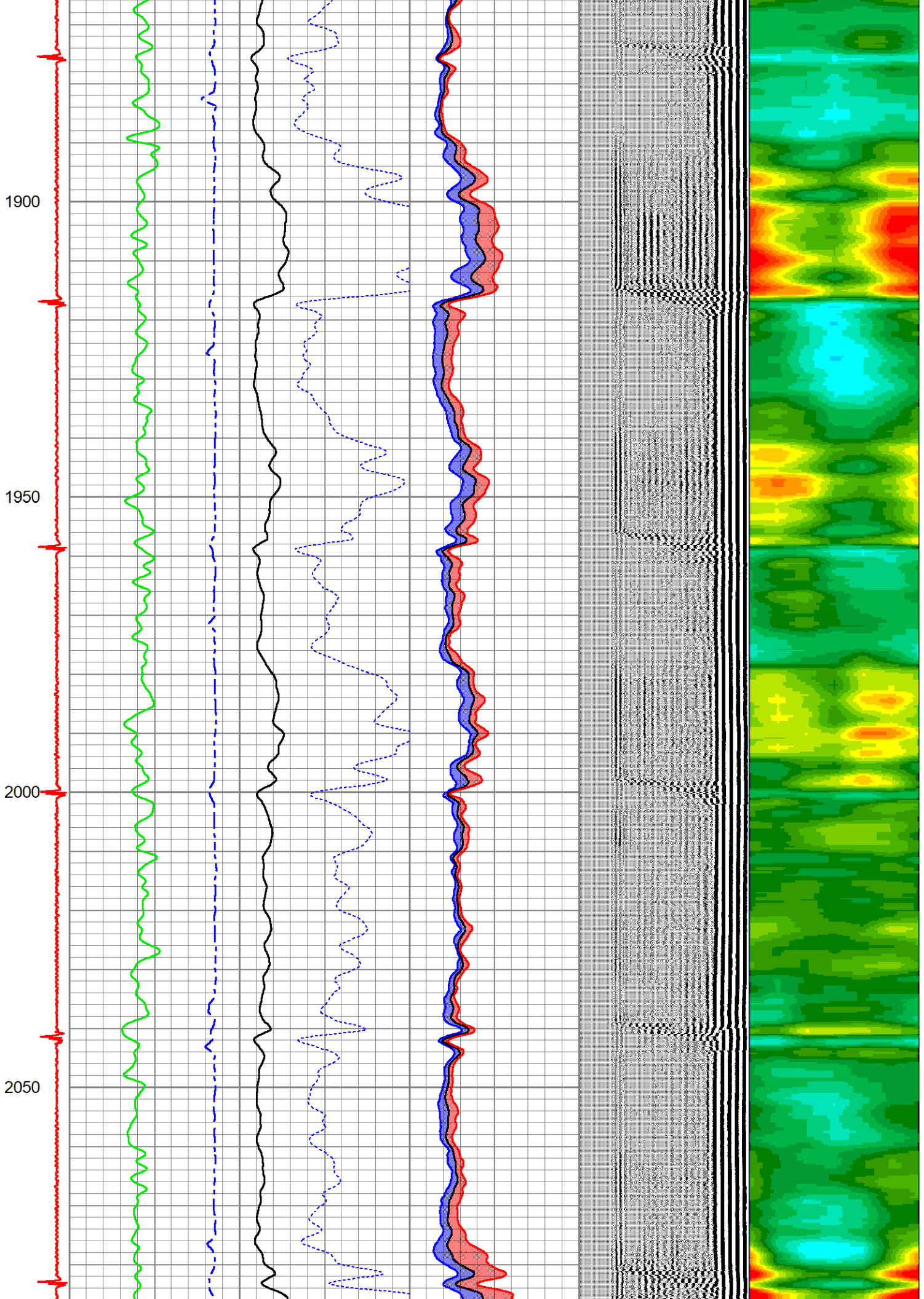




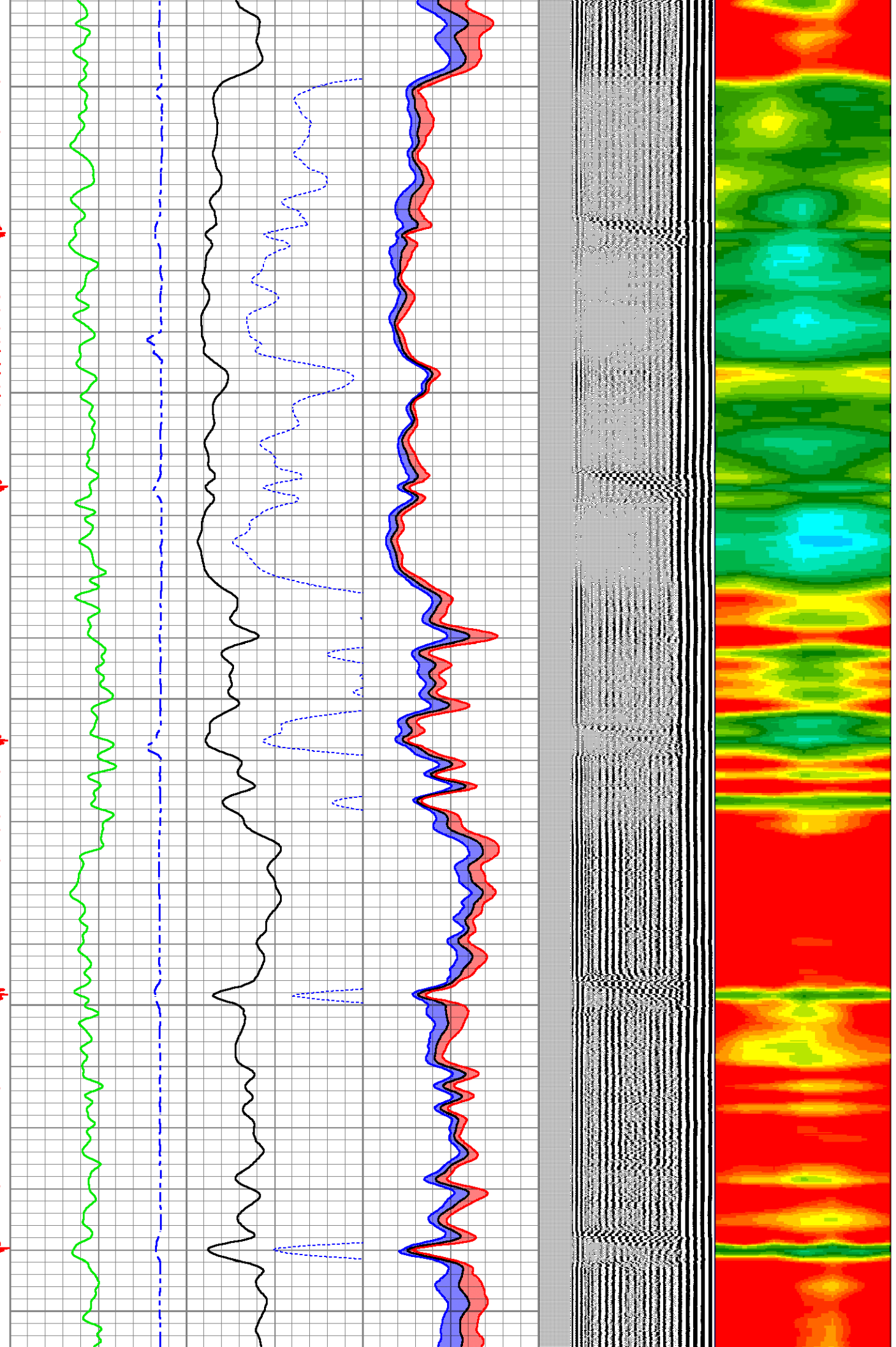


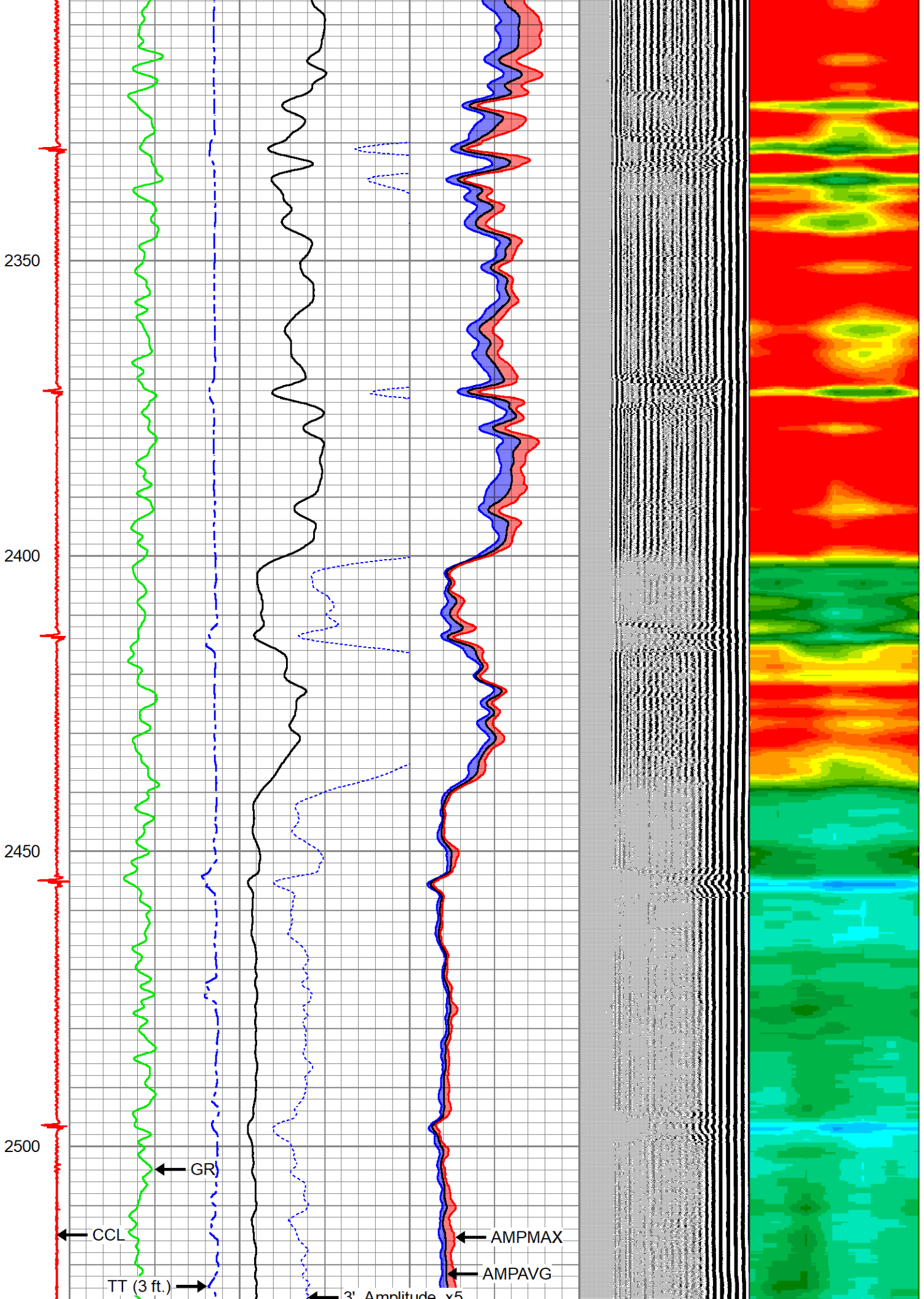


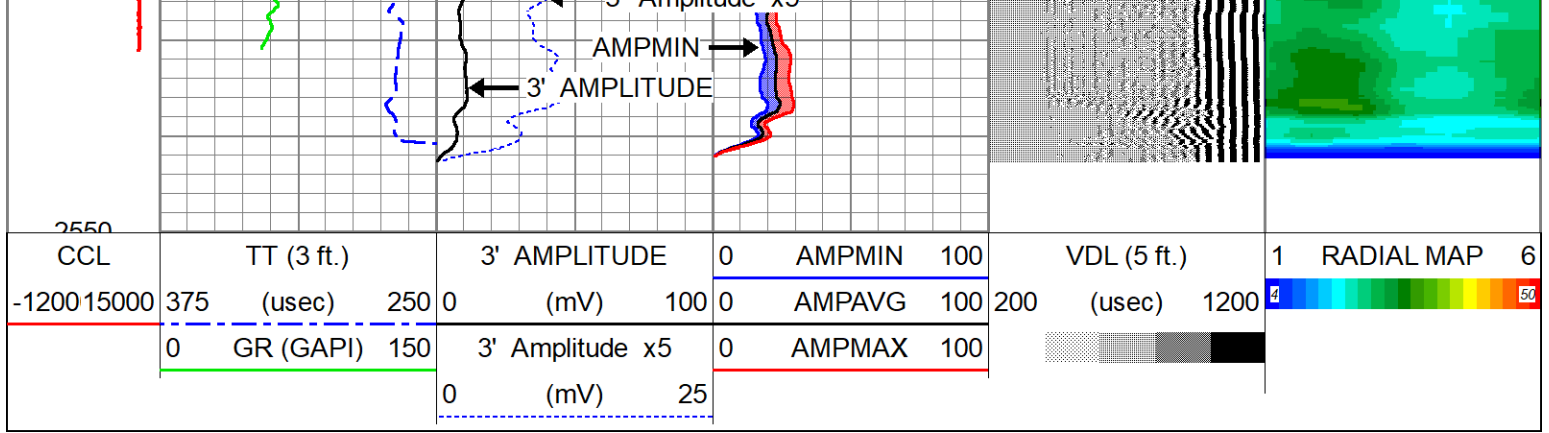




2100  
2150  
2200  
2250  
2300







<b>Company</b>	CHEVRON	
<b>Well</b>	LEDFORD 22Y-401	
<b>Field</b>	WATTENBERG - 90750	
<b>County</b>	WELD	
<b>State</b>	COLORADO	<b>Country</b> U.S.A.