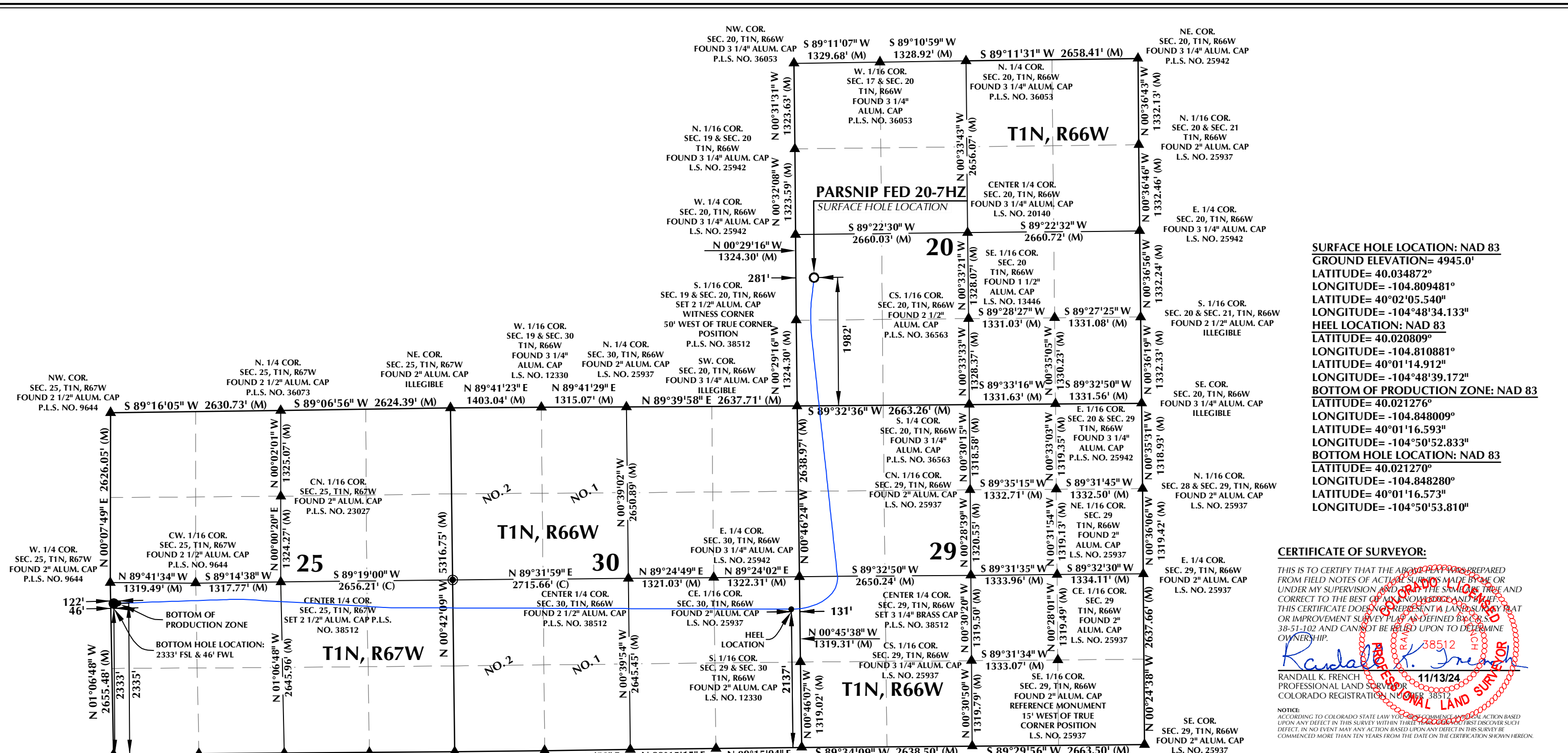


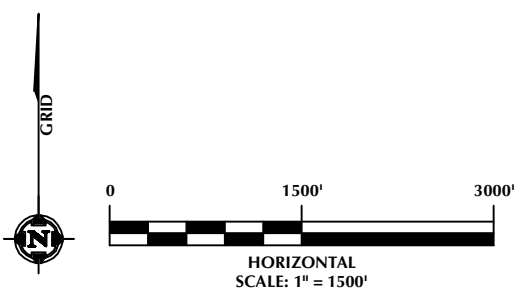
K:\LANDMARC\2023\174_PARSNIP_T1N_R66W_SEC_20\PLANS\PARSNIP_1-11.dwg, 11/14/2024 7:50:33 PM, sundberg



SURFACE HOLE LOCATION: NAD 83
GROUND ELEVATION= 4945.0'
LATITUDE= 40.034872°
LONGITUDE= -104.809481°
LATITUDE= 40°02'05.540"
LONGITUDE= -104°48'34.133"
HEEL LOCATION: NAD 83
LATITUDE= 40.02809°
LONGITUDE= -104.810881°
LATITUDE= 40°01'14.912"
LONGITUDE= -104°48'39.172"
BOTTOM OF PRODUCTION ZONE: NAD 83
LATITUDE= 40.021276°
LONGITUDE= -104.848009°
LATITUDE= 40°01'16.593"
LONGITUDE= -104°50'52.833"
BOTTOM HOLE LOCATION: NAD 83
LATITUDE= 40.021270°
LONGITUDE= -104.848280°
LATITUDE= 40°01'16.573"
LONGITUDE= -104°50'53.810"

CERTIFICATE OF SURVEYOR:
THIS IS TO CERTIFY THAT THE ABOVE MAP WAS PREPARED FROM FIELD NOTES OF ACTUAL SURVEY MADE BY ME OR UNDER MY SUPERVISION AND TO THE BEST OF MY KNOWLEDGE AND BELIEF THIS CERTIFICATE DOES NOT REPRESENT A LAND SURVEY THAT OR IMPROVEMENT SURVEY PLAT AS DEFINED BY C.S. 38-51-102 AND CANNOT BE RELIED UPON TO DETERMINE OWNERSHIP.
Randall K. French
PROFESSIONAL LAND SURVEYOR
NO. 38512
11/13/24
RANDALL K. FRENCH
PROFESSIONAL LAND SURVEYOR
COLORADO REGISTRATION NUMBER 38512
NOTICE: ACCORDING TO COLORADO STATE LAW YOU MUST COMMENCE ANY LEGAL ACTION BASED UPON ANY DEFECT IN THIS SURVEY WITHIN THREE YEARS OF YOUR FIRST DISCOVERY OF SUCH DEFECT. IN NO EVENT MAY ANY ACTION BE BASED UPON ANY DEFECT IN THIS SURVEY BE COMMENCED MORE THAN TEN YEARS FROM THE DATE ON THE CERTIFICATION SHOWN HEREON.

- NOTES:**
- ▲ INDICATES SECTION CORNER.
 - INDICATES CALCULATED CORNER.
 - ELEVATION BASED ON NAVD88 (GEOID18).
 - BASIS OF BEARINGS DERIVED FROM COLORADO COORDINATE SYSTEM OF 1983, NORTH ZONE.
 - ALL MEASURED DISTANCES ARE GRID.
COMBINED SCALE FACTOR: .99972956 CALCULATED FROM THE CS. 1/16 CORNER OF SECTION 20, T1N, R66W.
 - OPERATOR: JASON CURNUTT / PDOP = 1.8
 - WELL FOOTAGES ARE MEASURED AT RIGHT ANGLES TO THE SECTION LINES.



609 CONSULTING, LLC
LOVELAND OFFICE
6706 North Franklin Avenue
Loveland, Colorado 80538
Phone 970-776-4331
SHERIDAN OFFICE
1095 Saberton Avenue
Sheridan, Wyoming 82801
Phone 307-674-0609

Kerr-McGee Oil & Gas Onshore LP
1099 18th Street
Denver, Colorado 80202

WELL PAD - PARSNIP FED HZ		
PARSNIP FED 20-7HZ WELL LOCATION CERTIFICATE 1982' FSL & 281' FWL (NWSW) (SURFACE HOLE LOCATION) LOCATED IN SECTION 20 2137' FSL & 131' FEL (NESE) (HEEL LOCATION) LOCATED IN SECTION 30 T1N, R66W, 6TH P.M. 2335' FSL & 122' FWL (NWSW) (BOTTOM OF PRODUCTION ZONE) 2333' FSL & 46' FWL (NWSW) (BOTTOM HOLE LOCATION) LOCATED IN SECTION 25 T1N, R67W, 6TH P.M. WELD COUNTY, COLORADO		
DRAFTED BY:	SJM	CHECKED BY: RKF
DATE DRAFTED:	11/13/24	DATE SURVEYED: 9/18/24
REVISED:		FILE NAME: 23-174