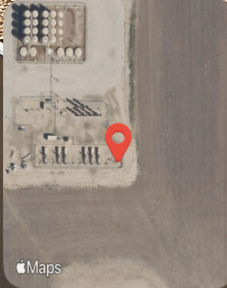


Looking at the spill location. The excavation at the spill location has been backfilled.



Fort Lupton, CO, United States 🇺🇸

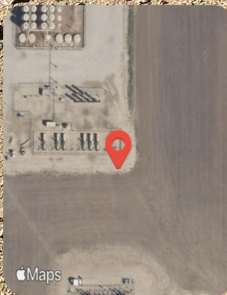
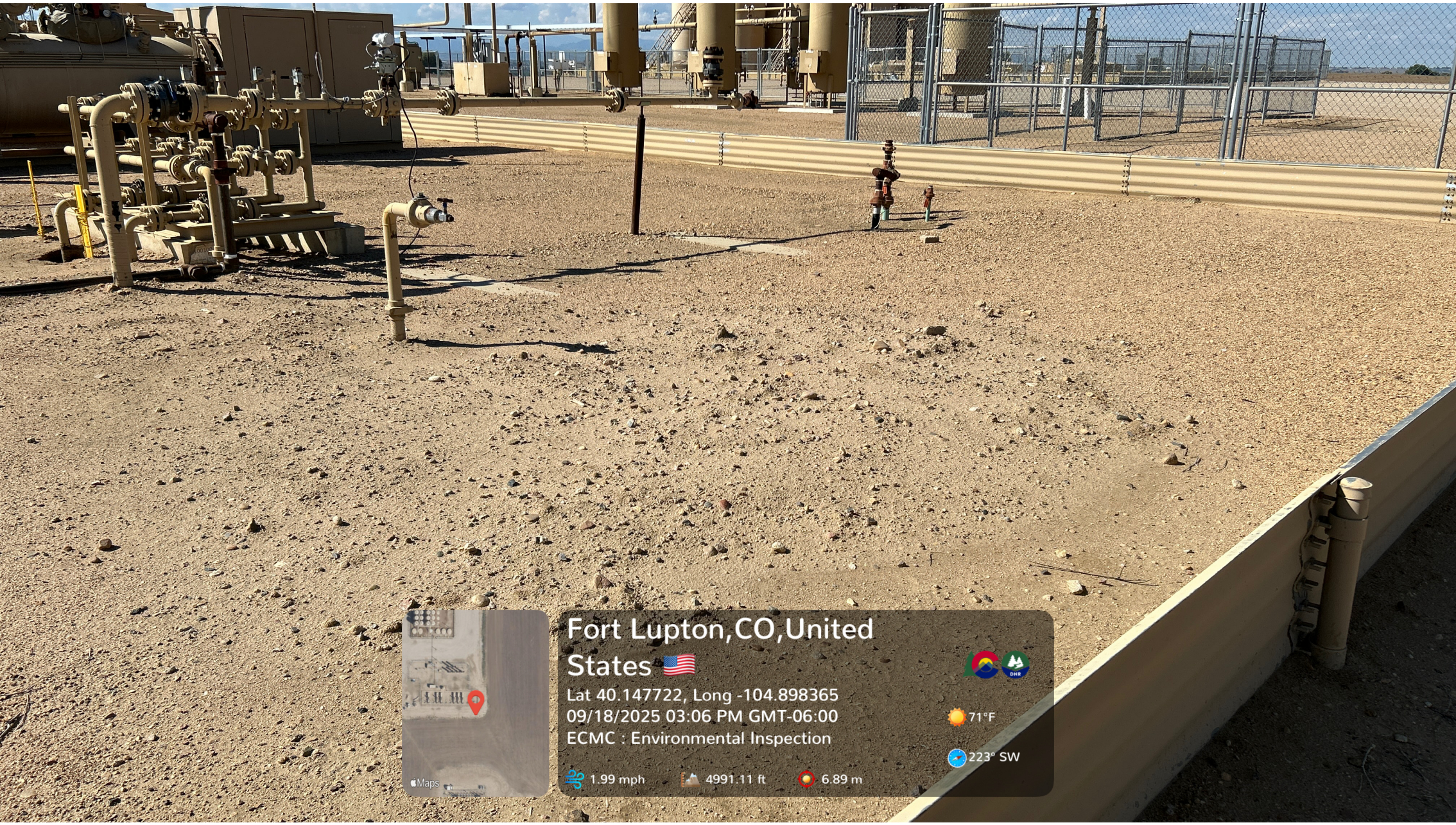
Lat 40.147823, Long -104.898375
09/18/2025 03:05 PM GMT-06:00
ECMC : Environmental Inspection



71°F

131° SE

1.99 mph 4994.59 ft 5.9 m




Fort Lupton, CO, United States

Lat 40.147722, Long -104.898365
09/18/2025 03:06 PM GMT-06:00
ECMC : Environmental Inspection



 71°F

 223° SW

 1.99 mph

 4991.11 ft

 6.89 m