

WELL NAME: BELARDE 12-34, API #: 071-09005, INSP. # 716301430



PHOTO 1: WELL SIGN



PHOTO 2: LOCATION.



WGS84
±12ft

37.30510, -104.77534

ft
±10ft

7071

°M
±10

E95



Colorado Oil & Gas Conservation Commission
© 25-Aug-25 13:23:29

PHOTO 3: WELLHEAD AND EQUIPMENT.



COLORADO
Energy & Carbon Management
Commission
Department of Natural Resources

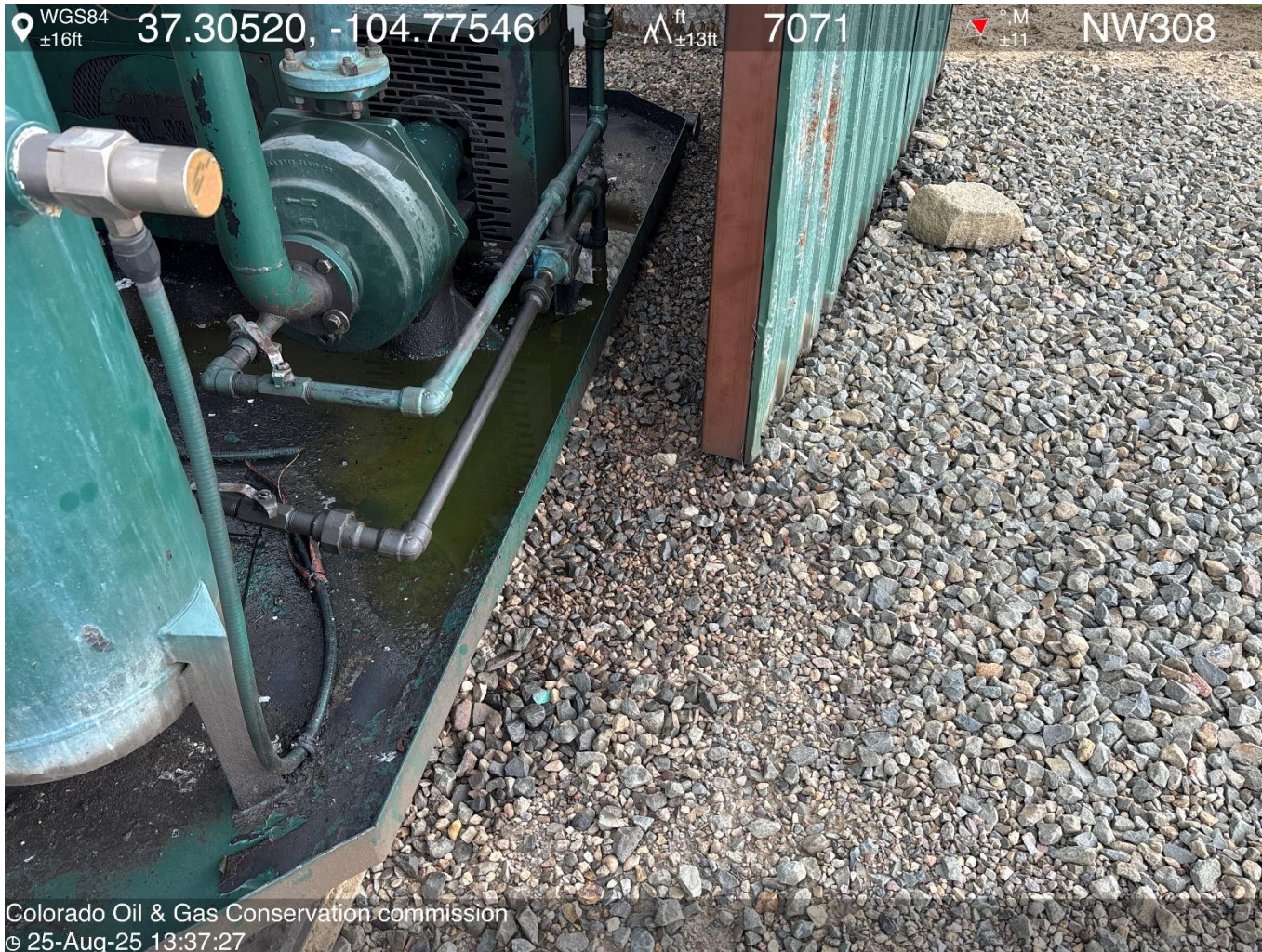


PHOTO 4: AREA OF IMPACTED SOIL NEAR COMPRESSOR SKID. Conduct maintenance on equipment, cleanup stained material and review self inspection processes. COMPLY WITH RULE 1002,(2).D. CA DATE 9-25-2025.



PHOTO 5: AREA OF IMPACTED SOIL NEAR COMPRESSOR SKID. Conduct maintenance on equipment, cleanup stained material and review self inspection processes. COMPLY WITH RULE 1002,(2).D. CA DATE 9-25-2025.

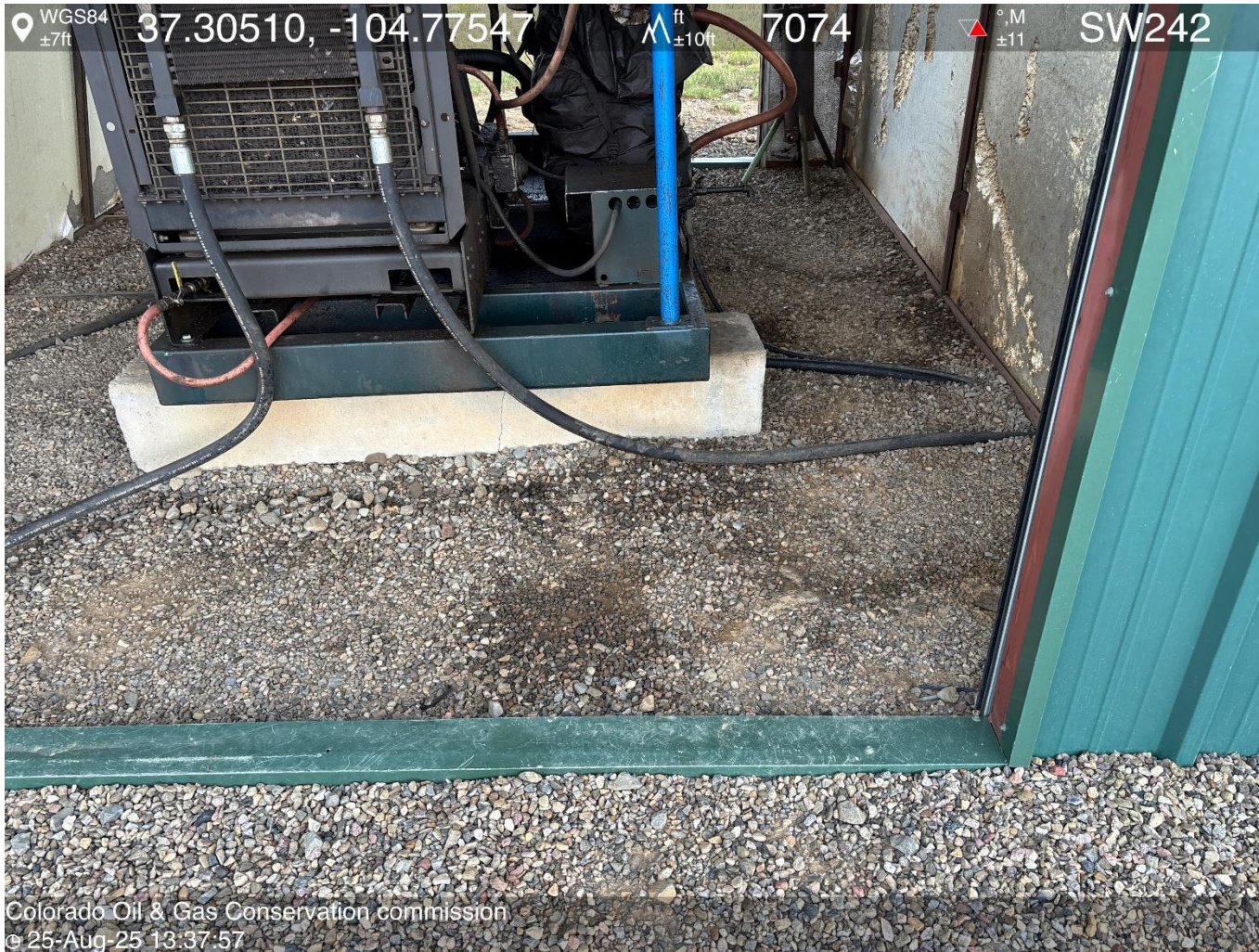


PHOTO 6: AREA OF IMPACTED SOIL NEAR PRIME MOVER ENGINE SKID. Conduct maintenance on equipment, cleanup stained material and review self inspection processes. COMPLY WITH RULE 1002,.(2).D. CA DATE 9-25-2025.



PHOTO 7: AREA OF IMPACTED SOIL NEAR WELLHEAD. Conduct maintenance on equipment, cleanup stained material and review self inspection processes. COMPLY WITH RULE 1002,(2).D. CA DATE 9-25-2025.



PHOTO 8: Bradenhead inaccessible. Install appropriate fittings to allow bradenhead visual inspection as per Rule 419.a.(1), (2) THIS IS THE SECOND NOTICE FOR THIS CORRECTIVE ACTION, IMMEDIATE ACTION IS REQUIRED.

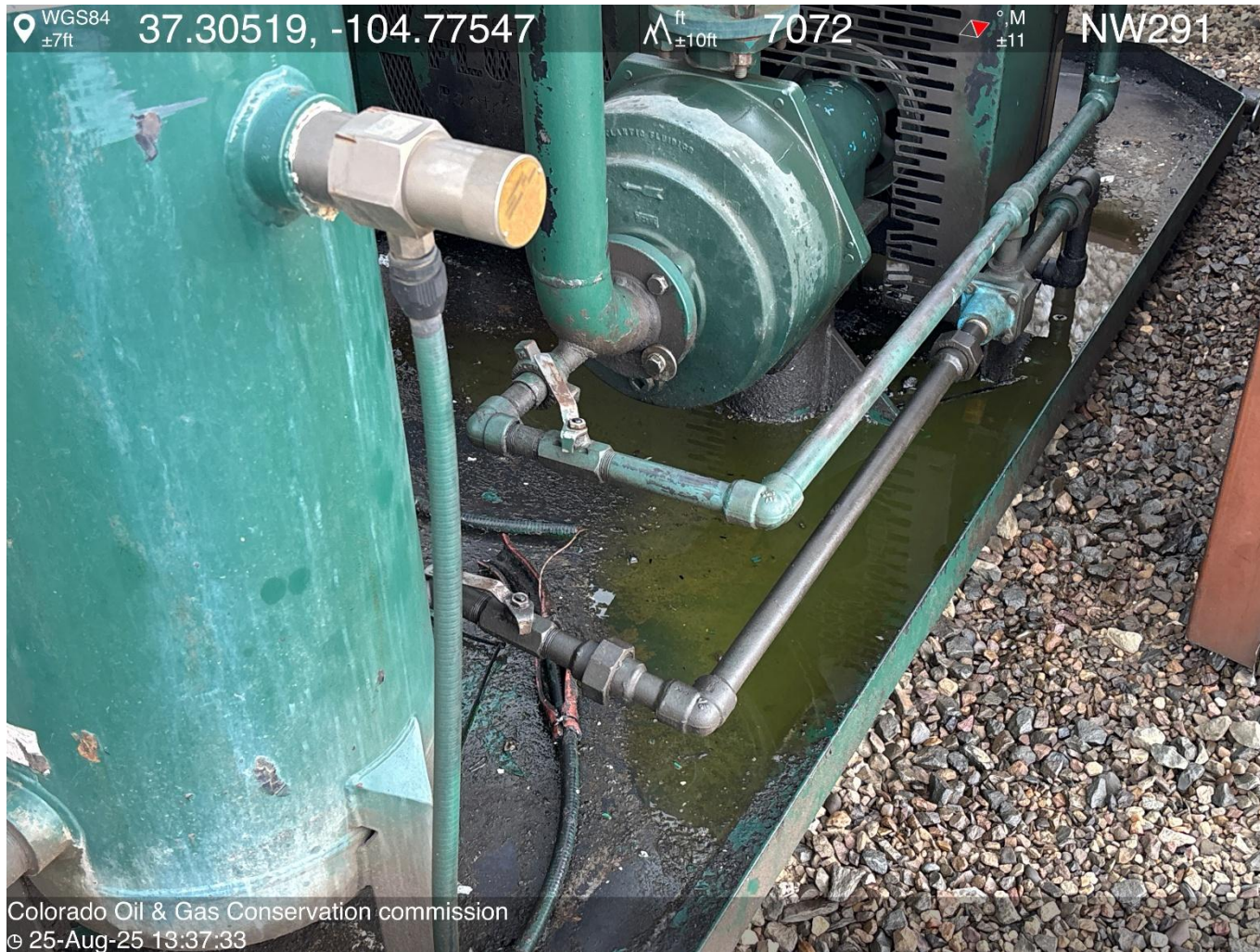


PHOTO 9: APPEARS TO BE ANTIFREEZE AND OILY WASTE IN COMPRESSOR SKID. DRAIN OILY WASTE REPAIR ALL LEAKS AND REMOVE IMPACTED SOIL PER RULE 1002..(2).D & 1002.f.(2)B, Comply with general provisions of the oil and gas act for wildlife protection AND SB-181. THIS IS THE SECOND NOTICE FOR THIS CORRECTIVE ACTION, IMMEDIATE ACTION IS REQUIRED.