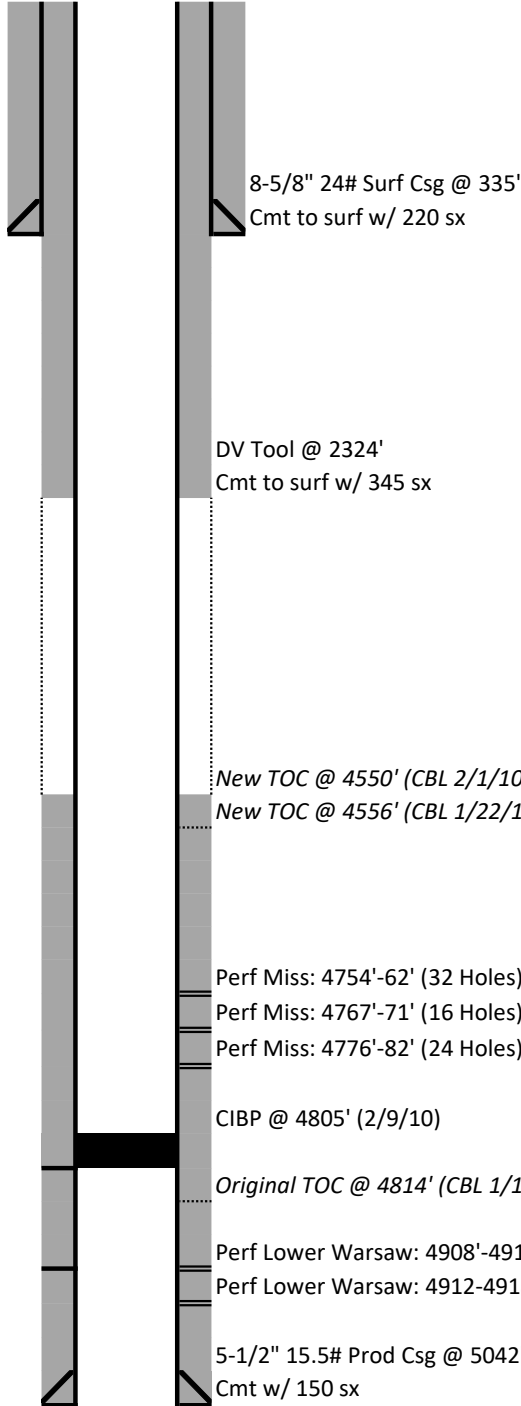




Current Wellbore Configuration

Hole: 12-1/4"

Hole: 7-7/8"



| | |
|-------------|--|
| Date: | 5/1/2025 |
| Well Name: | Tallman Farms A #1-14 |
| Location: | 1294' FSL & 605' FWL NW/4 SW/4 14-18S-45W |
| County: | Kiowa |
| State: | Colorado |
| API: | 05-061-06836 |
| KB: | 3937' |
| GL: | 3950' |
| Spud Date: | 12/11/2009 |
| First Prod: | 2/18/2010 |

| <u>Formation</u> | <u>Log Top</u> |
|------------------------|----------------|
| TOP DAKOTA | 873' |
| BASE DAKOTA | 1053' |
| TOP CHEYENNE | 1123' |
| BASE CHEYENNE | 1218' |
| SHAWNEE | 3441' |
| LANSING | 3660' |
| MARMATON | 4036' |
| FORT SCOTT | 4118' |
| CHEROKEE | 4171' |
| ATOKA | 4309' |
| MISSISSIPPIAN-ST LOUIS | 4595' |
| SPERGEN | 4790' |
| OSAGE | 4907' |

Perf 4809' & sqzd
w/ 30 sx to raise TOC

Perf 4908'-12' & sqzd
w/ 100 sx to raise TOC

PBTD: 4805'
RTD: 5050'