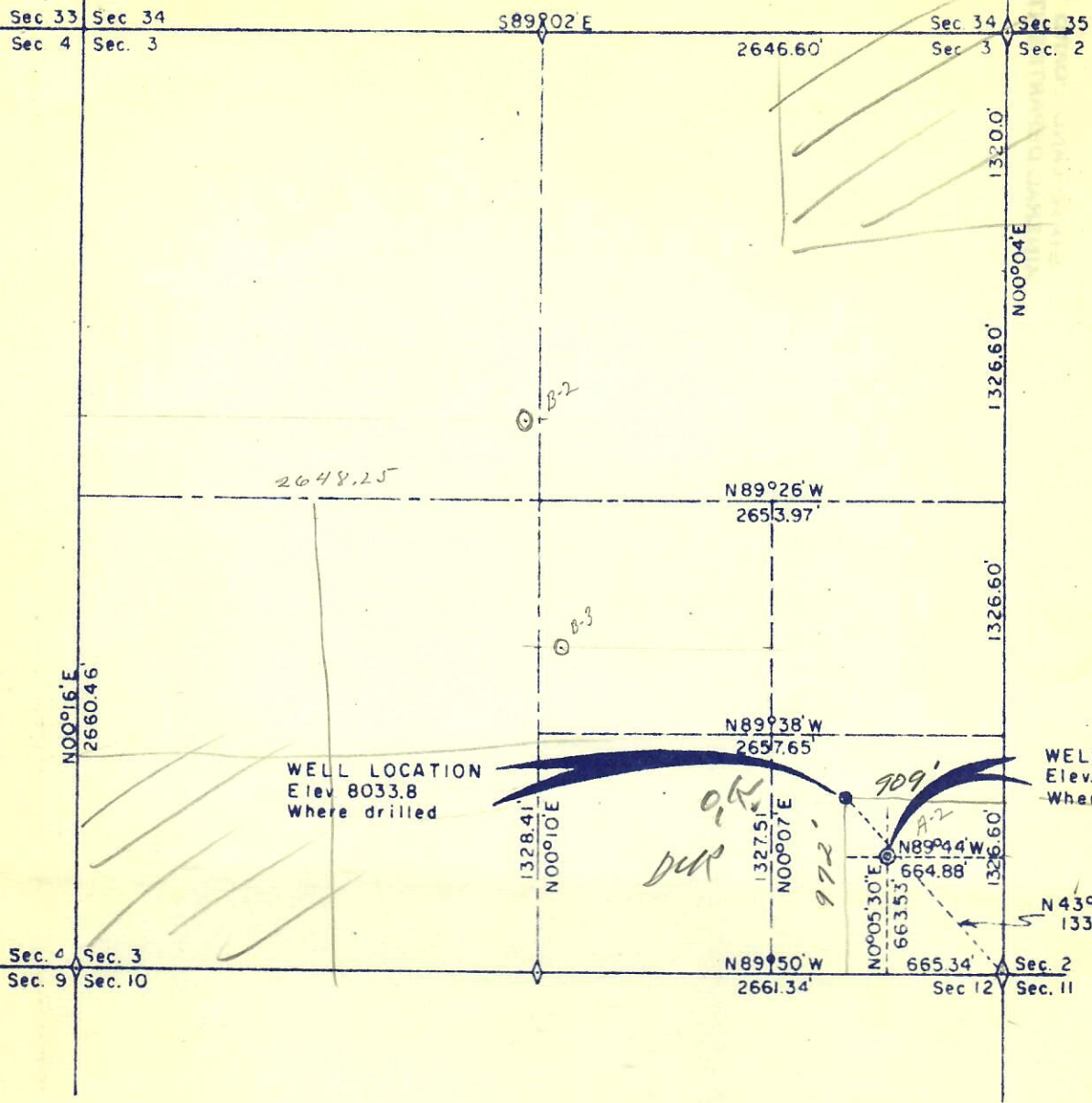
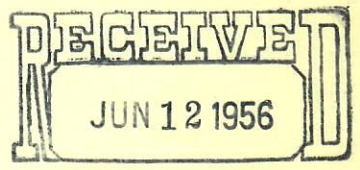


Correction

N



NOTE: Property owned by Monte Blevins Jr.



OIL & GAS
CONSERVATION COMMISSION
*Cabeen Ex.
Blevins A-2*

REVISED MAY 28, 1958

I, Richard J. Mandeville, do hereby certify that this plat was plotted from notes of a true and accurate field survey made under my supervision

Richard J. Mandeville
Registered Engineer & Land Surveyor

WESTERN ENGINEERS
A-2 Blevins
WELL LOCATION
SE 1/4 SE 1/4 Sec. 3 T9N., R.78W. 6th P.M.
JACKSON COUNTY, COLORADO

SURVEYED *W.Q.* DRAWN *L.B.P.*

GRAND JUNCTION, COLORADO APRIL 6, 1956