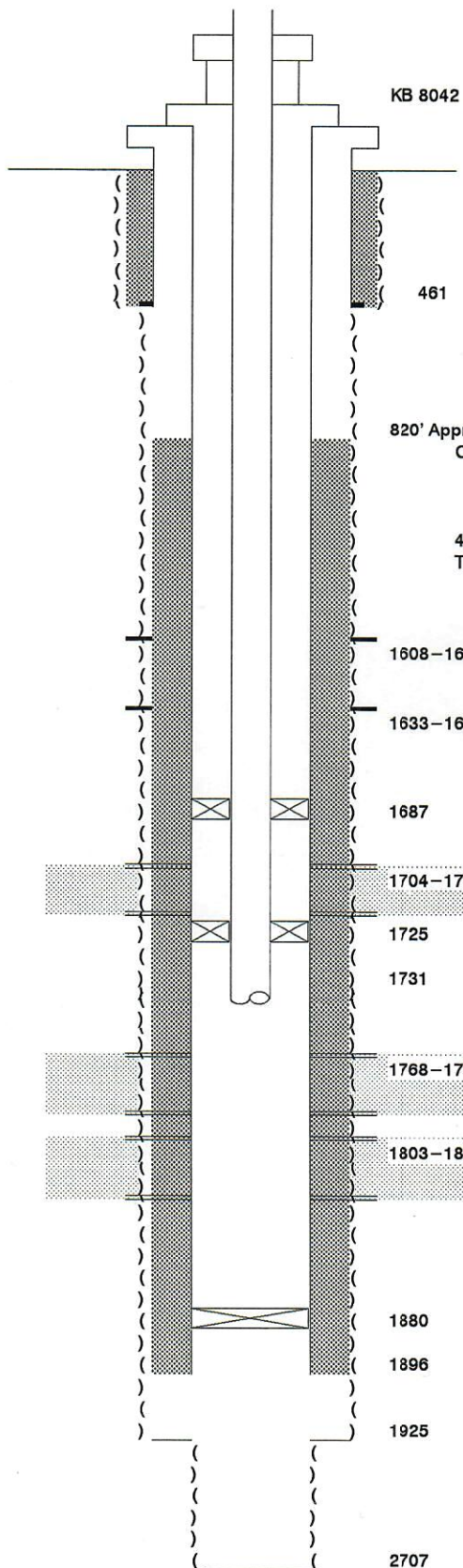


**WELLBORE DIAGRAM**  
 PRIOR TO CONVERSION TO INJECTION WELL

Company: GASCO, INC.  
 Lease Name: Blevins  
 Lease Number: A-2  
 Location: SE/SE Sec.3 T9N-R78W  
 County: Jackson, CO  
 Date: 04/06/94



KB 8042

461 12-3/4 SRFCSG set w/ 450 sx

820' Approximately  
 Calculations on cement height:  
 12 1/5" hole diameter with 8 5/8" casing diameter = 2.24 ft/cu. ft  
 cement slurry volume estimate = 1.2 cu ft/sack  
 400 sacks cement \* 1.2 cu ft/sack \* 2.24 ft/cu ft = 1075 ft  
 The height of cement from 1896' - 1075' = 821 ft depth

1608-1622 Muddy Formation  
 First Bench

1633-1649 Muddy Formation  
 Second Bench

1687 Baker Model "D" pkr installed 5/21/80

1704-1724 Dakota w/ 4 spf 5/56 produced via casing

1725 Baker Model "D" pkr installed 5/21/80

1731 2-3/8" Tbg

1768-1793 Upper Lakota w/ 4 spf 5/56 produced via tubing

1803-1828 Lakota w/ 4 spf 5/56 produced via tubing

1880 CIBF set w/ 2 sx cmt dumped on top

1896 8-5/8 casing set w/ 400 sx cement

1925

2707

TD 2707