



TEP ROCKY MOUNTAIN LLC TOP OUT POST JOB REPORT

TR 311-28-597 05-045-23567
S:28 T:5S R:97W Garfield CO

CallSheet #: 95570
Proposal #: 83118



TOP OUT Post Job Report

Attention: Mr. Dustin Childers | (936) 524-8828 | dchilders@terraep.com
Terra Energy Partners, LLC
4828 Loop Central Dr., Suite 900 | Houston, TX 77081

Dear Mr. Dustin Childers,

Thank you for the opportunity to provide cementing services on this well. American Cementing strives to achieve complete customer satisfaction. If you have any questions regarding the services or data provided, please contact American Cementing at any time.

Sincerely,

Addison Kneale

Field Engineer II | (904) 228-9560 | addison.kneale@americacementing.com

Field Office 28730 US-6, Rifle, CO 81650
Phone: (970) 657-1187

Job Details & Summary

Geometry

Type	Function	OD (in)	ID (in)	Weight (lb/ft)	Thread	Top (ft)	Bottom (ft)	Excess (%)
Casing	Outer	20	19.5	53	n/a	0	80	0
Open Hole	Outer	n/a	13.5	n/a	n/a	80	500	0
Casing	Inner	9.625	8.921	36	n/a	0	500	0

Timing

Event	Date/Time
ERTS	05/10/2025 16:00
Call Out	5/10/2025 20:19
Depart Facility	5/10/2025 20:20
On Location	5/10/2025 20:21
Rig Up Iron	5/10/2025 20:22
Job Started	5/10/2025 20:35
Job Completed	5/11/2025 00:08
Rig Down Iron	5/11/2025 00:09
Depart Location	5/11/2025 00:10

Equipment / People

Unit Type	Unit	Power Unit	Employee #1	Employee #2
Field Storage Silo	FSS-438		Dalton Woodall	
Light Duty Vehicles	LDV-166		Collin Woronovitch	Danny Ridgeway
Cement Pump Float	CPF-053	TRH-1137	Jeremy Bradbrook	Devin Burton

General Job Information

Metrics	Value
Total CMT to Surface	1 bbls
Well Topped Out	Yes
Top Out Volume	94 bbls

Job Details

Metrics	Value
Well Full Prior to Job	No
Well Fluid Density Into Well	N/A lb/gal
Well Fluid Density Out of Well	N/A lb/gal

Job Details (cont.)

Metrics	Value
BHCT	70 °F
BHST	70 °F

Water Analysis

Metrics	Value	Recommended
Water Source	Upright Rig Tank	
Temperature	50 °F	50-80 °F
pH Level	7	5.5-8.5
Chlorides	80 mg/L	0-3000 mg/L
Total Alkalinity	80	0-1000
Total Hardness	100 mg/L	0-500 mg/L
Carbonates	N/A mg/L	0-100 mg/L
Sulfates	<200 mg/L	0-1500 mg/L
Potassium	100 mg/L	0-3000 mg/L
Iron	0 mg/L	0-300 mg/L

Circulation

Lost Circulation Experienced
No

Job Execution Information

Fluid	Product	Function	Density (lb/gal)	Yield (ft ³ /sk)	Water Rq. (gal/sk)	Water Rq. (gal/bbl)	Volume (sks)	Volume (bbl)	Designed Top (ft)
1	Topout	Topout	12.30	2.31	13.17		228.00	93.81	0

Job Fluid Details

Fluid	Type	Fluid	Product	Function	Conc.	Uom
1	Topout	Topout	ASTM TYPE IL	Cement	100.00	%
1	Topout	Topout	A-10	Accelerator	5.00	%BWOB
1	Topout	Topout	A-2	Accelerator	3.00	lb/sk
1	Topout	Topout	A-7P	Accelerator	2.00	lb/sk
1	Topout	Topout	IntegraSeal POLI	LostCirculation	0.25	lb/sk
1	Topout	Topout	STATIC FREE	Other	0.01	lb/sk
1	Topout	Topout	XCem-311	Defoamer	0.30	%BWOB

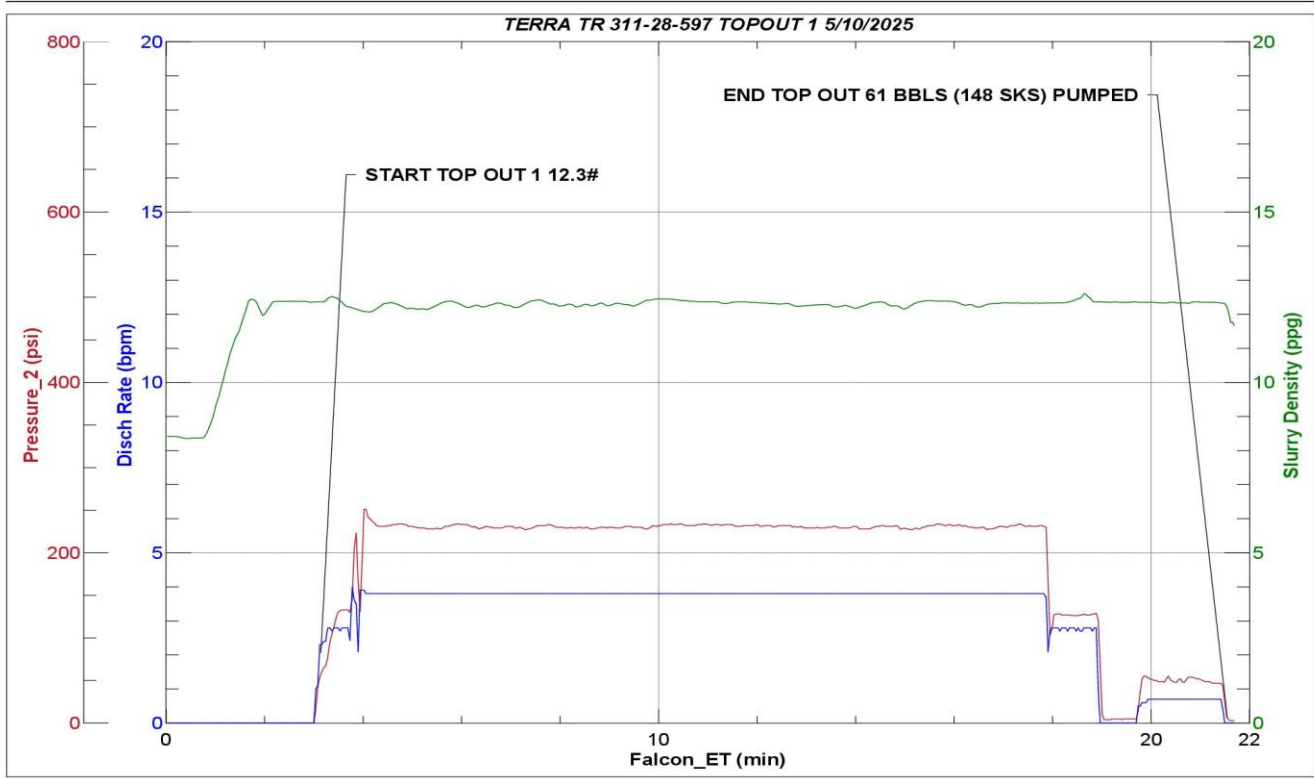
Job Logs

Line	Event	Date (MM/DD/YY)	Time (HH:MM)	Density (lb/gal)	Pump Rate (bpm)	Pump Volume (bbls)	Pipe Pressure (psi)	Comment
1	Callout	5/10/2025	20:19					CREW CALLED FOR TOP OUT
2	Depart Location	5/10/2025	20:20					DEPART FOR CELLAR
3	Arrive On Location	5/10/2025	20:21					ARRIVE
4	Rig Up Iron	5/10/2025	20:22					RIG UP TOP OUT/ STAB STINGER
5	Pump Cement	5/10/2025	20:35	12.3	3.5	0	242	BEGIN PUMPING (12.3#, 2.32Y, 13.2MW) TOP OUT CEMENT
6	Pump Cement	5/10/2025	20:45	12.3	3.5	30	255	30 BBLS PUMPED
7	Pump Cement	5/10/2025	20:56	12.3	2	31	130	61 BBLS (148 SKS) TOTAL PUMPED.
8	Waiting	5/10/2025	21:30					WAITING TO DO FINAL TOP OUT
9	Pump Cement	5/10/2025	23:50	12.3	2	0	125	BEGIN PUMPING (12.3#, 2.32Y, 13.2MW) TOP OUT CEMENT
10	Pump Cement	5/10/2025	00:08	12.3	2	33	120	33 BBLS (80 SKS) TOTAL PUMPED. 1 BBL CEMENT TO SURFACE
11	End Job	5/11/2025	00:08					END TOP OUT. 94 BBLS (228 SKS) TOTAL TOP OUT PUMPED.
12	Rig Down Iron	5/11/2025	00:09					RIG DOWN ALL FROM WELL
13	Depart Location	5/11/2025	00:10					CREW DEPARTS WELL FOR NEXT WELL.

Pump Diagrams



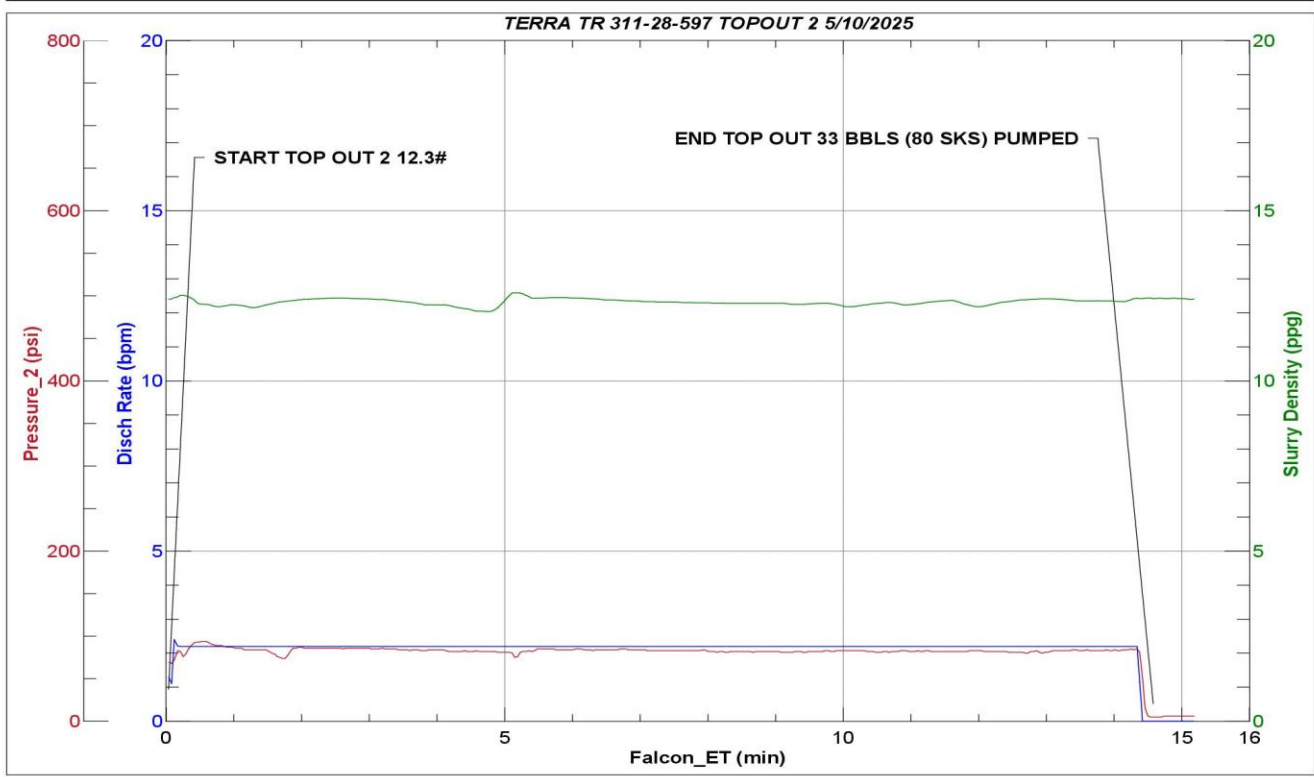
JobMaster Program Version 5.01C1
Job Number: 95570
Customer: TERRA
Well Name: TR 311-28-597



Job Start: Saturday, May 10, 2025



JobMaster Program Version 5.01C1
Job Number: 95570
Customer: TERRA
Well Name: TR 311-28-597



Job Start: Saturday, May 10, 2025