



# TEP ROCKY MOUNTAIN LLC SURFACE POST JOB REPORT

TR 311-28-597 05-045-23567  
S:28 T:5S R:97W Garfield CO

CallSheet #: 95538  
Proposal #: 83044



**SURFACE Post Job Report**

**Attention:** Mr. Dustin Childers | (936) 524-8828 | dchilders@terraep.com  
TEP ROCKY MOUNTAIN LLC  
4828 Loop Central Dr., Suite 900 | Houston, TX 77081

---

Dear Mr. Dustin Childers,

Thank you for the opportunity to provide cementing services on this well. American Cementing strives to achieve complete customer satisfaction. If you have any questions regarding the services or data provided, please contact American Cementing at any time.

Sincerely,

**Krystal Schell**

Field Engineer I | (719) 992-1830 | krystal.schell@americacementing.com

**Field Office**      28730 US-6, Rifle, CO 81650  
Phone: (970) 657-1187

## Job Details & Summary

### Geometry

Type	Function	OD (in)	ID (in)	Weight (lb/ft)	Thread	Top (ft)	Bottom (ft)	Excess (%)
Casing	Outer	20	19.5	53	n/a	0	80	0
Open Hole	Outer	n/a	14.75	n/a	n/a	80	3328	75
Casing	Inner	9.625	8.921	36	n/a	0	3328	0

### Equipment / People

Unit Type	Unit	Power Unit	Employee #1
Field Storage Silo	FSS-474		
Cement Trailer Float	CTF-161	TRC-059	Shawn Levings
Cement Trailer Float	CTF-263	TRC-249	Steven Richey
Cement Trailer Float	CTF-522	TRC-425	Duewayne Jackson
Cement Pump Float	CPF-058	TRH-959	Jeremy Bradbrook
Light Duty Vehicles	LDV-166		Collin Woronovitch

### Timing

Event	Date/Time
ERTS	05/08/2025 14:00
Call Out	5/8/2025 07:00
Depart Facility	5/8/2025 10:30
On Location	5/8/2025 13:00
Rig Up Iron	5/8/2025 13:30
Job Started	5/8/2025 15:30
Job Completed	5/8/2025 19:00
Rig Down Iron	5/8/2025 19:02
Depart Location	5/8/2025 19:03

### General Job Information

Metrics	Value
Well Fluid Density	8.8 lb/gal
Well Fluid Type	WBM
Rig Circulation Vol	250 bbls
Rig Circulation Time	0.5 hours
Calculated Displacement	252 bbls
Actual Displacement	252 bbls
Total Spacer to Surface	0 bbls
Total CMT to Surface	0 bbls
Well Topped Out	No

### Job Details

Metrics	Value
Flare Prior to Job	No
Flare Prior to Job	0 units
Flare During Job	No
Flare During Job	0 units
Flare at End of Job	No
Flare at End of Job	0 units
Well Full Prior to Job	Yes
Well Fluid Density Into Well	8.8 lb/gal
Well Fluid Density Out of Well	8.8 lb/gal

### Job Details (cont.)

Metrics	Value
BHCT	100 °F
BHST	131 °F

### Water Analysis

Metrics	Value	Recommended
Water Source	Upright Rig Tank	
Temperature	50 °F	50-80 °F
pH Level	7	5.5-8.5
Chlorides	80 mg/L	0-3000 mg/L
Total Alkalinity	80	0-1000
Total Hardness	100 mg/L	0-500 mg/L
Carbonates	N/A mg/L	0-100 mg/L
Sulfates	<200 mg/L	0-1500 mg/L
Potassium	120 mg/L	0-3000 mg/L
Iron	0 mg/L	0-300 mg/L

### Circulation

Lost Circulation Experienced	Losses into Spacer	Losses into Cement	Losses into Displacement
Yes	0	450	0

### Circulation Details

RETURNS BEFORE JOB. NO RETURNS AT START OF JOB. CAUGHT RETURNS 80 BBLS INTO LEAD. LOST RETURNS 450 INTO LEAD. NO RETURNS REMAINDER OF JOB.

### Job Execution Information

Fluid	Product	Function	Density (lb/gal)	Yield (ft <sup>3</sup> /sk)	Water Rq. (gal/sk)	Water Rq. (gal/bbl)	Volume (sks)	Volume (bbl)	Designed Top (ft)
1	Water	Flush	8.34			42.00		40.00	0
2	Lead	Lead	12.30	2.32	13.18		1194.00	492.37	0
3	Tail	Tail	12.80	2.04	11.17		595.00	215.78	2293
4	Displacement	DisplacementFinal	8.34			42.00		252.00	0

### Job Fluid Details

Fluid	Type	Fluid	Product	Function	Conc.	Uom
2	Lead	Lead	ASTM TYPE IL	Cement	100.00	%
2	Lead	Lead	A-10	Accelerator	5.00	%BWOB
2	Lead	Lead	A-2	Accelerator	3.00	lb/sk
2	Lead	Lead	A-7P	Accelerator	2.00	lb/sk
2	Lead	Lead	IntegraSeal POLI	LostCirculation	0.25	lb/sk
2	Lead	Lead	R-7C	Retarder	0.50	%BWOB
2	Lead	Lead	STATIC FREE	Other	0.01	lb/sk
2	Lead	Lead	XCem-311	Defoamer	0.30	%BWOB
3	Tail	Tail	ASTM TYPE IL	Cement	100.00	%
3	Tail	Tail	A-10	Accelerator	5.00	%BWOB
3	Tail	Tail	A-2	Accelerator	2.00	lb/sk
3	Tail	Tail	A-7P	Accelerator	2.00	lb/sk
3	Tail	Tail	IntegraSeal POLI	LostCirculation	0.25	lb/sk
3	Tail	Tail	R-7C	Retarder	0.20	%BWOB
3	Tail	Tail	STATIC FREE	Other	0.01	lb/sk
3	Tail	Tail	XCem-311	Defoamer	0.30	%BWOB

## Job Logs

Line	Event	Date (MM/DD/YY)	Time (HH:MM)	Density (lb/gal)	Pump Rate (bpm)	Pump Volume (bbls)	Pipe Pressure (psi)	Comment
1	Callout	5/8/2025	07:00					CREW CALLED OUT RTS: 14:00
2	Depart Location	5/8/2025	10:30					CREW DEPARTS RCO YARD FOR RIG LOCATION
3	Arrive On Location	5/8/2025	13:00					CREW AND EQUIPMENT ARRIVED ON LOCATION.
4	Spot Equipment	5/8/2025	13:15					SPOT EQUIPMENT
5	Rig Up Iron	5/8/2025	13:30					PRE RIG UP SAFETY MEETING. RIG UP ALL IRON, HOSES AND EQUIPMENT.
6	Other	5/8/2025	14:30					CASING LANDED. RIG PUMPED 250 BBLs.
7	Safety Meeting	5/8/2025	15:30					PRE JOB JSA WITH COMPANY MAN AND RIG CREW.
8	Fill Lines	5/8/2025	15:55	8.34	4	5	125	FILL LINES WITH 5 BBLs OF FRESHWATER
9	Pressure Test Lines	5/8/2025	15:58	8.34	1	1	3400	PRESSURE TEST PUMP AND IRON
10	Pump Spacer	5/8/2025	16:01	8.34	4	0	198	BEGIN PUMPING FRESHWATER
11	Pump Spacer	5/8/2025	16:04	8.34	5.3	15	250	15 BBLs FRESHWATER SPACER PUMPED
12	Pump Spacer	5/8/2025	16:09	8.34	5.3	20	300	40 BBLs TOTAL FRESHWATER SPACER PUMPED.
13	Pump Lead Cement	5/8/2025	16:09	12.3	5.3	0	323	BEGIN PUMPING (12.3#, 2.32Y, 13.2MW) LEAD CEMENT. WEIGHT VERIFIED BY MUD SCALE.
14	Pump Lead Cement	5/8/2025	16:17	12.3	6.5	50	354	50 BBLs LEAD AWAY
15	Pump Lead Cement	5/8/2025	16:28	12.3	6.5	50	288	100 BBLs LEAD AWAY
16	Pump Lead Cement	5/8/2025	16:36	12.3	6.5	50	299	150 BBLs LEAD AWAY
17	Pump Lead Cement	5/8/2025	16:44	12.3	6.5	50	288	200 BBLs LEAD AWAY
18	Pump Lead Cement	5/8/2025	16:59	12.3	5.5	100	230	300 BBLs LEAD AWAY
19	Pump Lead Cement	5/8/2025	17:17	12.3	6.5	100	268	400 BBLs LEAD AWAY
20	Pump Lead Cement	5/8/2025	17:27	12.3	6.5	92	325	502 BBLs (1194 SKS) TOTAL LEAD CEMENT PUMPED. SWAP TO TAIL
21	Pump Tail Cement	5/8/2025	17:27	12.8	6.5	0	335	BEGIN PUMPING (12.8#, 2.04Y, 11.2MW) TAIL CEMENT. WEIGHT VERIFIED BY MUD SCALE.
22	Pump Tail Cement	5/8/2025	17:35	12.8	6.5	50	341	50 BBLs TAIL AWAY
23	Pump Tail Cement	5/8/2025	17:43	12.8	6.5	50	356	100 BBLs TAIL AWAY
24	Pump Tail Cement	5/8/2025	18:01	12.8	6.5	116	296	216 BBLs (595 SKS) TOTAL TAIL CEMENT PUMPED.
25	Shutdown	5/8/2025	18:01					SHUTDOWN AND WASH UP TO PIT.
26	Drop Top Plug	5/8/2025	18:09					PLUG DROPPED. WITNESSED BY COMPANY MAN AND DRILLER.
27	Pump Displacement	5/8/2025	18:09	8.34	4	0	97	BEGIN PUMPING FRESHWATER DISPLACEMENT.
28	Pump Displacement	5/8/2025	18:18	8.34	8	50	350	50 BBLs DISPLACED
29	Pump Displacement	5/8/2025	18:24	8.34	8	50	450	100 BBLs DISPLACED

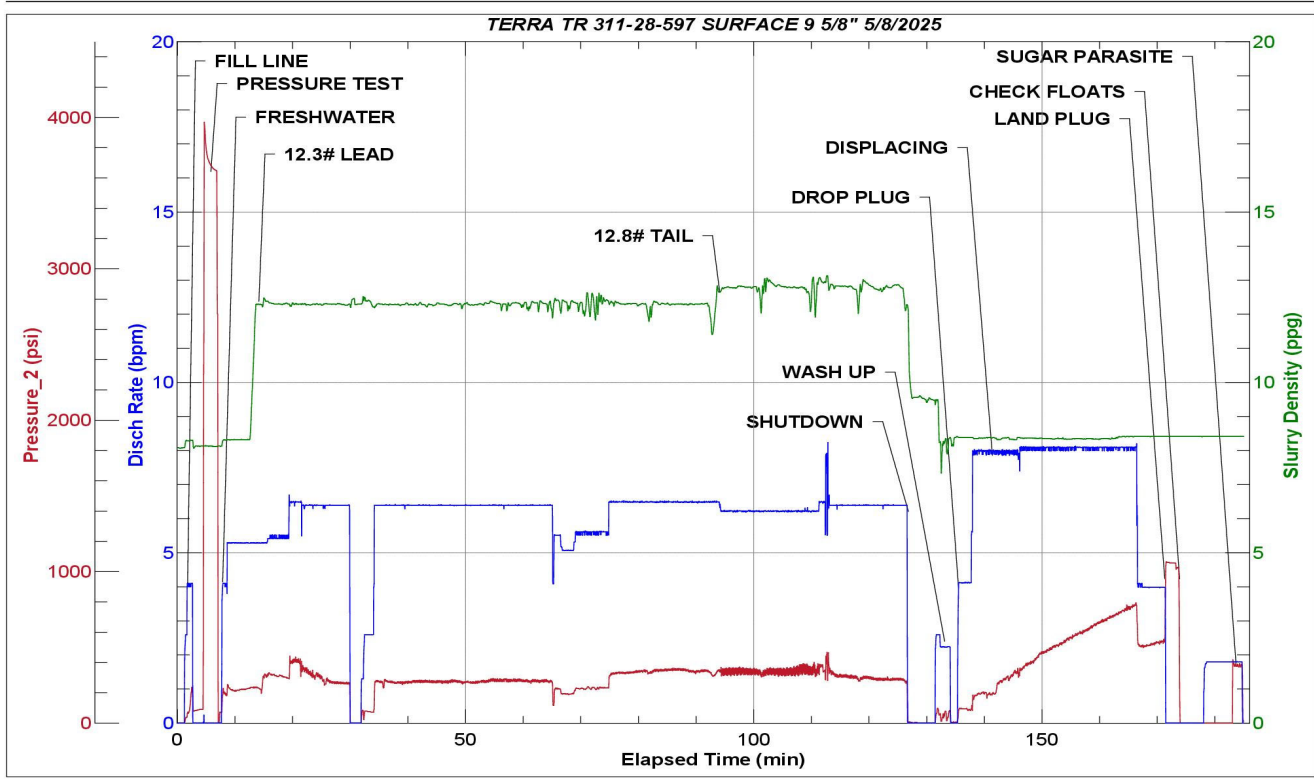


Line	Event	Date (MM/DD/YY)	Time (HH:MM)	Density (lb/gal)	Pump Rate (bpm)	Pump Volume (bbls)	Pipe Pressure (psi)	Comment
30	Pump Displacement	5/8/2025	18:30	8.34	8	50	598	150 BBLS DISPLACED
31	Pump Displacement	5/8/2025	18:36	8.34	8	50	732	200 BBLS DISPLACED
32	Pump Displacement	5/8/2025	18:46	8.34	4	52	542	252 BBLS TOTAL DISPLACEMENT PUMPED. MAX LIFT 800 PSI @ 8 BPM. BEFORE SLOW DOWN @ 240 BBLS DISPLACED.
33	Land Plug	5/8/2025	18:46				1060	PLUG LANDED. FCP-542 PSI BUMP- 1060 PSI.
34	Check Floats	5/8/2025	18:48			0.75		BLEED OFF CHECK FLOATS. FLOATS HELD .75 BBLS BACK
35	Sugar Parasite	5/8/2025	18:52	8.34	2	12	451	RIG DOWN FLOOR AND RIG UP TO PUMP 12 BBLS OF SUGAR WATER DOWN PARASITE AND THEN TOP OUT. PARASITE BROKE OVER AT 451 PSI
36	End Job	5/8/2025	19:00					
37	Safety Meeting	5/8/2025	19:01					PRE RIG DOWN JSA
38	Rig Down Iron	5/8/2025	19:02					RIG DOWN ALL IRON, HOSES, AND EQUIPMENT FOR SURFACE JOB
39	Depart Location	5/8/2025	19:03					TOP OUT BEGINS

# Pump Diagrams



JobMaster Program Version 5.01C1  
Job Number: 95538  
Customer: TERRA  
Well Name: TR 311-28-597



Job Start: Thursday, May 08, 2025