



---

# **TEP ROCKY MOUNTAIN LLC LONG STRING POST JOB REPORT**

**TR 311-28-597 05-045-23567  
S:28 T:5S R:97W Garfield CO**

CallSheet #: 95857  
Proposal #: 83575



**LONG STRING Post Job Report**

**Attention:** Justin Whipple | (405) 209-7912 | justin.whipple@flywheelEnergy.com

TEP ROCKY MOUNTAIN LLC

4828 Loop Central Dr., Suite 900 | Houston, TX 77081

---

Dear Justin Whipple,

Thank you for the opportunity to provide cementing services on this well. American Cementing strives to achieve complete customer satisfaction. If you have any questions regarding the services or data provided, please contact American Cementing at any time.

Sincerely,

**Addison Kneale**

Field Engineer I | (904) 228-9560 | addison.kneale@americacementing.com

**Field Office**      28730 US-6, Rifle, CO 81650  
Phone: (970) 657-1187

## Job Details & Summary

### Geometry

Type	Function	OD (in)	ID (in)	Weight (lb/ft)	Thread	Top (ft)	Bottom (ft)	Excess (%)
Casing	Outer	9.625	8.921	36	n/a	0	3328	0
Open Hole	Outer	n/a	8.75	n/a	n/a	3328	6877	35
Open Hole	Outer	n/a	8.75	n/a	n/a	6877	10037	35
Casing	Inner	4.5	4	11.6	n/a	0	10037	0

### Equipment / People

Unit Type	Unit	Power Unit	Employee #1
Cement Trailer Float	CTF-385	TRC-112	Danny Ridgeway
Field Storage Silo	FSS-438		
Field Storage Silo	FSS-474		
Light Duty Vehicles	LDV-145		Collin Woronovitch
Cement Pump Float	CPF-136	TRH-964	Ivan Gonzales

### Timing

Event	Date/Time
ERTS	06/11/2025 19:30
Call Out	6/11/2025 13:30
Depart Facility	6/11/2025 17:00
On Location	6/11/2025 18:50
Rig Up Iron	6/11/2025 19:00
Job Started	6/11/2025 20:30
Job Completed	6/11/2025 22:55
Rig Down Iron	6/11/2025 23:30
Depart Location	6/12/2025 00:30

### General Job Information

Metrics	Value
Well Fluid Density	8.8 lb/gal
Well Fluid Type	WBM
Rig Circulation Vol	600 bbls
Rig Circulation Time	1 hours
Calculated Displacement	155 bbls
Actual Displacement	155 bbls
Total Spacer to Surface	0 bbls
Total CMT to Surface	0 bbls
Well Topped Out	N/A

### Job Details

Metrics	Value
Well Full Prior to Job	Yes
Well Fluid Density Into Well	8.8 lb/gal
Well Fluid Density Out of Well	8.8 lb/gal

### Job Details (cont.)

Metrics	Value
BHCT	187 °F
BHST	252 °F

### Water Analysis

Metrics	Value	Recommended
Water Source	Upright Rig Tank	
Temperature	69 °F	50-80 °F
pH Level	7	5.5-8.5
Chlorides	40 mg/L	0-3000 mg/L
Total Alkalinity	80	0-1000
Total Hardness	40 mg/L	0-500 mg/L
Carbonates	N/A mg/L	0-100 mg/L
Sulfates	<200 mg/L	0-1500 mg/L
Potassium	80 mg/L	0-3000 mg/L
Iron	0 mg/L	0-300 mg/L

## Circulation

Lost Circulation Experienced

No

## Job Execution Information

Fluid	Product	Function	Density (lb/gal)	Yield (ft <sup>3</sup> /sk)	Water Rq. (gal/sk)	Water Rq. (gal/bbl)	Volume (sks)	Volume (bbl)	Designed Top (ft)
1	Water	Flush	8.34			42.00		60.00	3467
2	IntegraGuard EZ II	Spacer	12.00			30.36		20.00	4279
3	Lead	Lead	12.50	2.19	11.99		441.00	172.05	4550
4	Tail	Tail	13.00	2.08	10.61		633.00	234.36	6877
5	Displacement	DisplacementFinal	8.34			42.00		155.00	0

## Job Fluid Details

Fluid	Type	Fluid	Product	Function	Conc.	Uom
2	Spacer	IntegraGuard EZ II	S-8	StrengthRetgression	238.34	lb/bbl
2	Spacer	IntegraGuard EZ II	ASA-301	Viscosifier	2.00	lb/bbl
2	Spacer	IntegraGuard EZ II	SAPP	Surfactant	10.00	lb/bbl
2	Spacer	IntegraGuard EZ II	XCem-311	Defoamer	0.50	lb/bbl
3	Lead	Lead	ASTM TYPE IL	Cement	100.00	%
3	Lead	Lead	GW-86	Viscosifier	0.10	%BWOB
3	Lead	Lead	IntegraSeal PHENO	LostCirculation	3.00	lb/sk
3	Lead	Lead	IntegraSeal POLI	LostCirculation	0.25	lb/sk
3	Lead	Lead	R-3	Retarder	0.45	%BWOB
3	Lead	Lead	STATIC FREE	Other	0.01	lb/sk
3	Lead	Lead	XCem-1018	BondEnhancer	8.00	lb/sk
3	Lead	Lead	XCem-311	Defoamer	0.30	%BWOB
3	Lead	Lead	XCem-532	FluidLoss	0.30	%BWOB
4	Tail	Tail	CLASS G	Cement	70.00	%
4	Tail	Tail	FLY ASH (POZZOLAN)	Extender	20.00	%
4	Tail	Tail	XCem-1018	BondEnhancer	10.00	%
4	Tail	Tail	BENTONITE	Viscosifier	6.00	%BWOB
4	Tail	Tail	FL-24	FluidLoss	0.40	%BWOB
4	Tail	Tail	GW-86	Viscosifier	0.15	%BWOB
4	Tail	Tail	IntegraSeal PHENO	LostCirculation	3.00	lb/sk
4	Tail	Tail	R-3	Retarder	0.20	%BWOB
4	Tail	Tail	S-8	StrengthRetgression	25.00	%BWOB
4	Tail	Tail	XCem-311	Defoamer	0.30	%BWOB

## Job Logs

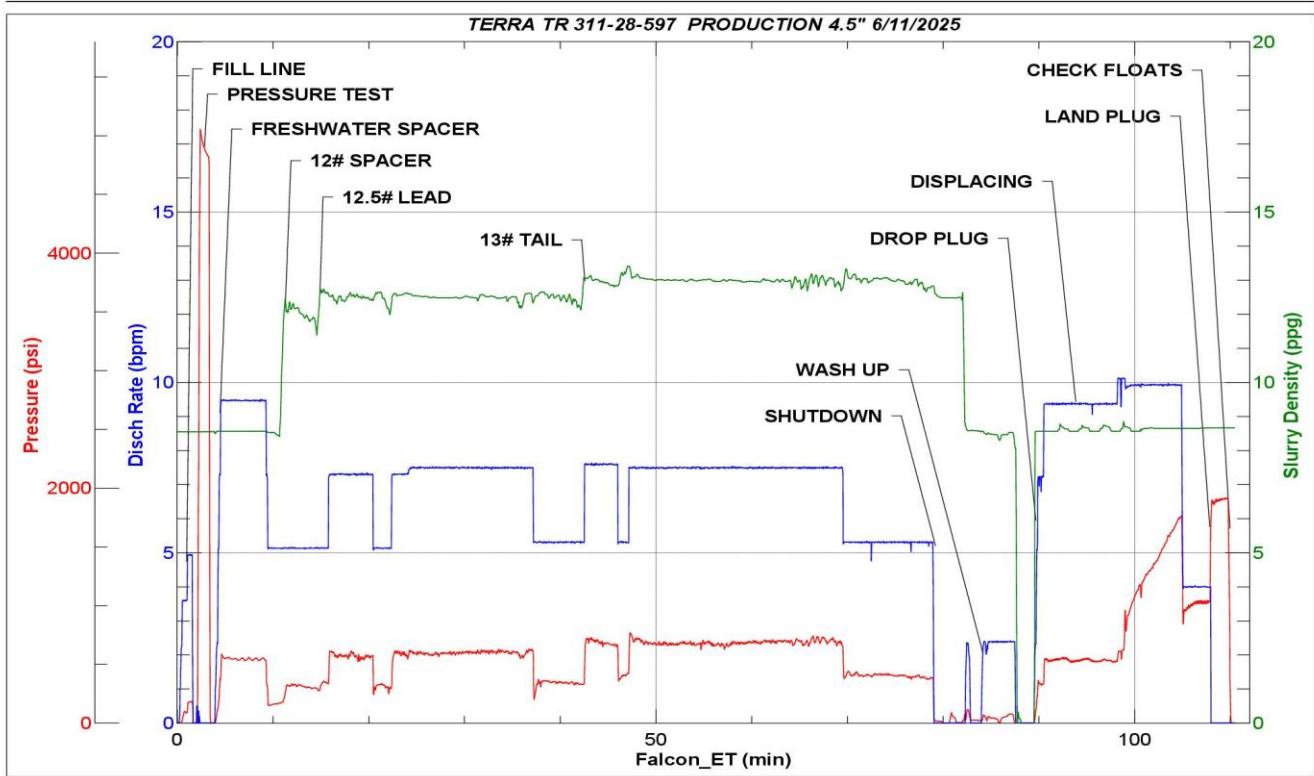
Line	Event	Date (MM/DD/YY)	Time (HH:MM)	Density (lb/gal)	Pump Rate (bpm)	Pump Volume (bbls)	Pipe Pressure (psi)	Comment
1	Callout	6/11/2025	13:30					CREW CALLED OUT FOR LOCATION TIME OF 19:30 6/11/25
2	Depart Location	6/11/2025	17:00					CREW DEPARTS RCO YARD FOR RIG LOCATION
3	Arrive On Location	5/26/2025	18:50					CREW AND EQUIPMENT ARRIVED ON LOCATION.
4	Rig Up Iron	6/11/2025	19:00					PRE RIG UP MEETING / RIG UP IRON HOSES AND EQUIPMENT. RIG RUNNING CASING.
5	Other	6/11/2025	20:00					CASING LANDED AT 20:00 CIRCULATED 1 HOUR. 600 BBLs.
6	Safety Meeting	6/11/2025	20:30					PRE JOB SAFETY MEETING WITH RIG CREW AND COMPANY MAN. FINISH RIGGING UP HEAD AND FLOOR AFTER SAFETY MEETING.
7	Fill Lines	6/11/2025	21:04	8.34	3.5	5	197	FILL LINES WITH 5 BBLs OF FRESH WATER
8	Pressure Test Lines	6/11/2025	21:06	8.34	1	1	5000	PRESSURE TEST PUMP AND LINES TO 5000 PSI
9	Pump Spacer	6/11/2025	21:08	8.34	9.5	0	583	BEGIN PUMPING FRESHWATER SPACER
10	Pump Spacer	6/11/2025	21:14	8.34	5	60	173	60 BBLs FRESHWATER SPACER PUMPED
11	Pump Spacer	6/11/2025	21:14	12	5	0	195	BEGIN PUMPING 20 BBLs 12.0# WEIGHTED SPACER
12	Pump Spacer	6/11/2025	21:18	12	5	20	292	20 BBLs SPACER PUMPED. SWAP TO LEAD.
13	Pump Lead Cement	6/11/2025	21:18	12.5	5	0	358	BEGIN PUMPING (12.5#, 2.19Y, 12.0MW) LEAD CEMENT. WEIGHT VERIFIED BY MUD SCALE.
14	Pump Lead Cement	6/11/2025	21:26	12.5	5	50	385	50 BBLs LEAD AWAY
15	Pump Lead Cement	6/11/2025	21:33	12.5	7.5	50	604	100 BBLs LEAD AWAY
16	Pump Lead Cement	6/11/2025	21:46	12.5	5	72	330	172 BBLs (441 SKS) TOTAL LEAD PUMPED. SWAP TO TAIL.
17	Pump Tail Cement	6/11/2025	21:46	13	5	0	346	BEGIN PUMPING (13.0#, 2.08Y, 10.6MW) TAIL CEMENT. WEIGHT VERIFIED BY MUD SCALE.
18	Pump Tail Cement	6/11/2025	21:53	13	7.5	50	672	50 BBLs TAIL AWAY
19	Pump Tail Cement	6/11/2025	22:00	13	7.5	50	675	100 BBLs TAIL AWAY
20	Pump Tail Cement	6/11/2025	22:07	13	7.5	50	700	150 BBLs TAIL AWAY
21	Pump Tail Cement	6/11/2025	22:13	13	7.5	50	680	200 BBLs TAIL AWAY
22	Pump Tail Cement	6/11/2025	22:22	13	5	34	390	234 BBLs (633 SKS) TOTAL TAIL PUMPED
23	Shutdown	6/11/2025	22:22					SHUTDOWN AND BLOW AIR TO CLEAR LINE
24	Wash Up	6/11/2025	22:24					WASH UP PUMP TO PIT
25	Drop Plug	6/11/2025	22:33					DROP PLUG, WITNESSED BY COMPANY MAN AND DRILLER
26	Pump Displacement	6/11/2025	22:33	8.34	5	0	150	BEGIN PUMPING FRESHWATER DISPLACEMENT
27	Pump Displacement	6/11/2025	22:39	8.34	10	50	538	50 BBLs DISPLACED
28	Pump Displacement	6/11/2025	22:44	8.34	10	50	1179	100 BBLs DISPLACED. CAUGHT PLUG @ 75 BBLs.

Line	Event	Date (MM/DD/YY)	Time (HH:MM)	Density (lb/gal)	Pump Rate (bpm)	Pump Volume (bbls)	Pipe Pressure (psi)	Comment
29	Pump Displacement	6/11/2025	22:52	8.34	4	55	1043	155 BBLs (CALCULATED) DISPLACEMENT PUMPED. SLOW DOWN @ 145. MAX LIFT 1759 PSI @ 10 BPM
30	Land Plug	6/11/2025	22:52				1901	PLUG LANED FCP-1043 PSI BUMP-1901
31	Check Floats	6/11/2025	22:55			1		BLLED PRESSURE OFF, FLOATS HELD 1 BBL BACK. END JOB @ 22:55
32	Safety Meeting	6/11/2025	23:15					PRE RIG DOWN JSA
33	Rig Down Iron	6/11/2025	23:30					RIG DOWN ALL IRON, HOSES AND EQUIPMENT
34	Safety Meeting	6/12/2025	00:25					PRE JOURNEY JSA
35	Depart Location	6/12/2025	00:30					CREW DEPARTS LOCATION FOR RCO YARD

## Pump Diagrams



JobMaster Program Version 5.01C1  
Job Number: 95857  
Customer: TERRA  
Well Name: TR 311-28-597



Job Start: Wednesday, June 11, 2025