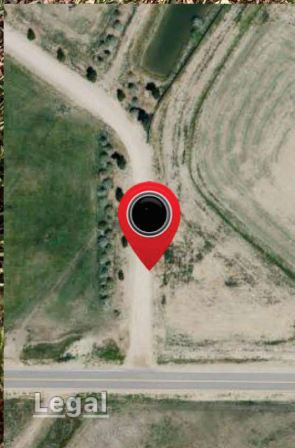


Occupied Osprey Platform

Piece of Torn Liner

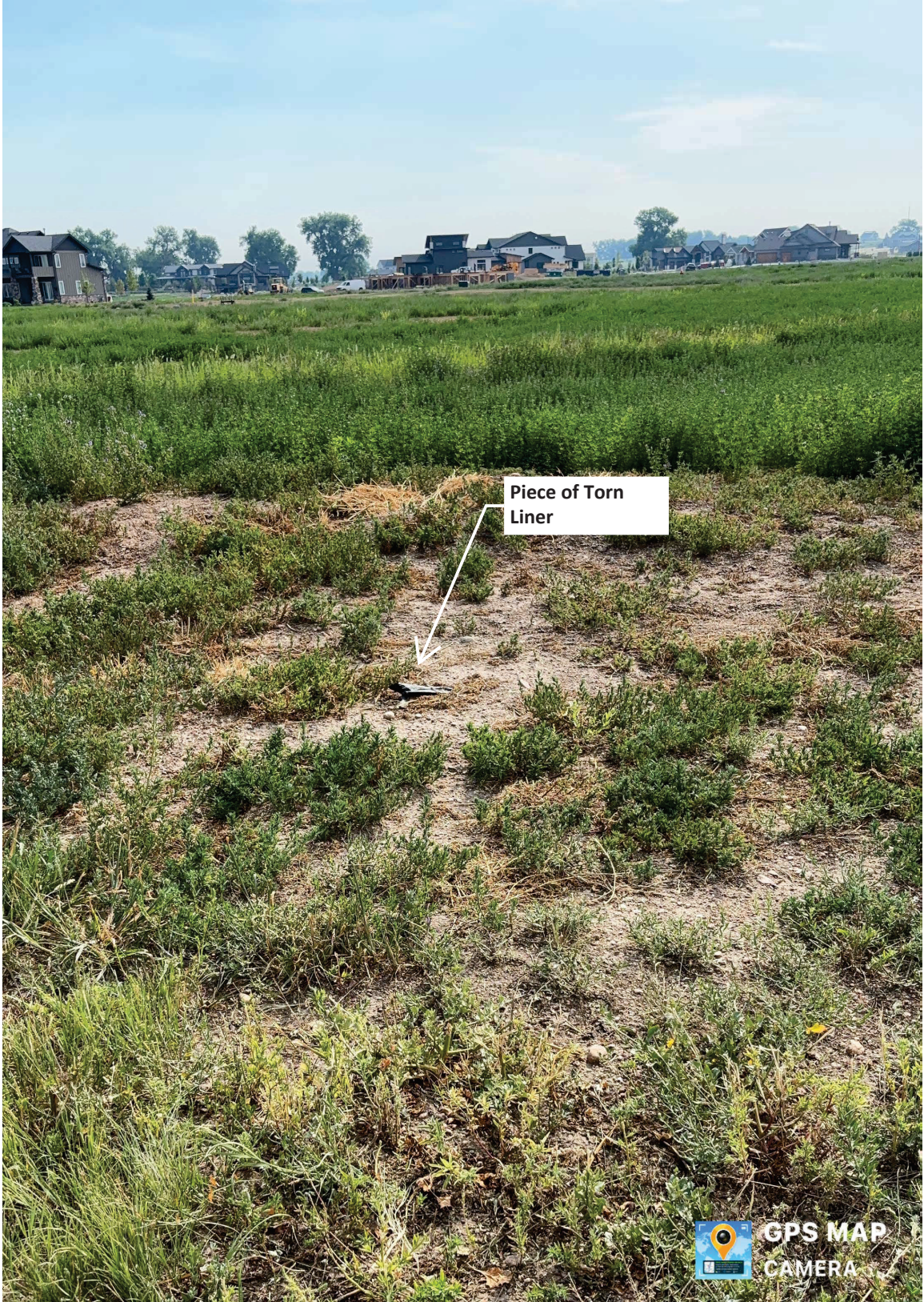
**\*Note\***  
Lat/Long, Elevation, Temperature, Wind Speed, Humidity displayed on each photo represent conditions at the time & location where Photo 1 was collected.

GPS MAP CAMERA

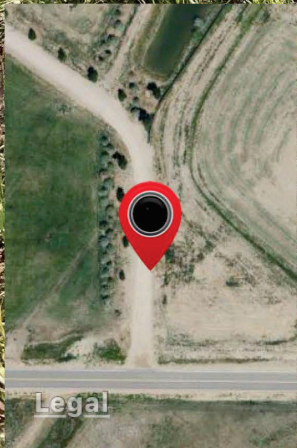


**Frederick, CO, United States**  
**KP Kauffman - Facility 3 @ Rasmussen Flowline**  
**Photo 1**

Lat 40.110244° Long -105.024368°  
06/08/2025 Wednesday, 9:39 AM  
8.0 mph 77%  
76 °F 192° S 4923 ft  
Tag: ECMC Environmental Inspection



Piece of Torn Liner



### Frederick, CO, United States

KP Kauffman - Facility 3 @ Rasmussen Flowline  
Photo 2

Lat 40.110244° Long -105.024368°

06/08/2025 Wednesday 9:38 AM

8.0 mph

77%

76 °F

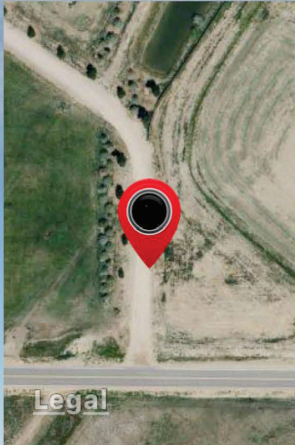
75° E

4923 ft

Tag: ECMC Environmental Inspection



GPS MAP  
CAMERA



# Frederick, CO, United States

KP Kauffman - Facility 3 @ Rasmussen Flowline  
Photo 3

Lat 40.110244° Long -105.024368°

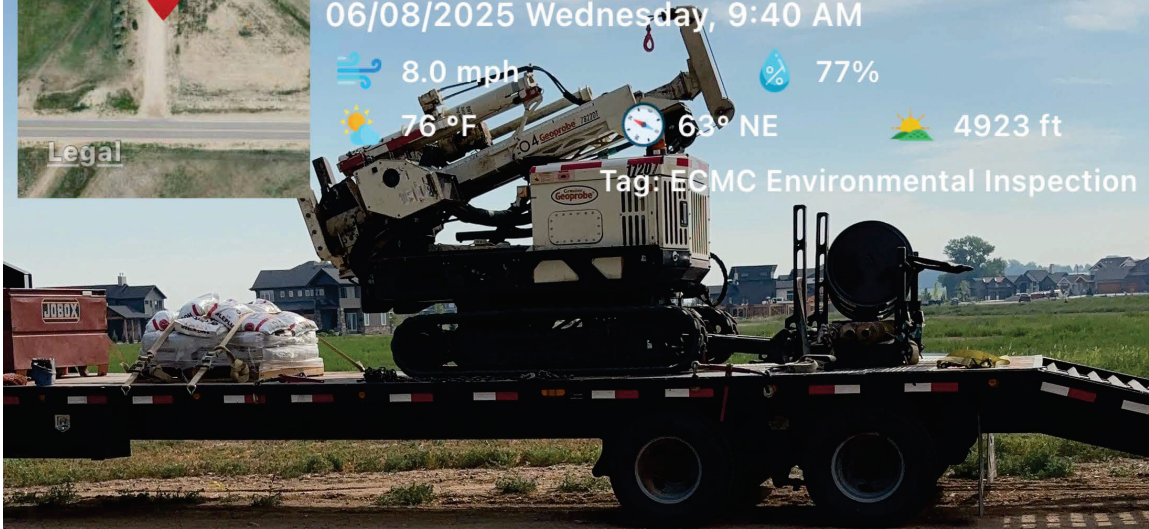
06/08/2025 Wednesday, 9:40 AM

8.0 mph 77%

76 °F 63° NE

4923 ft

Tag: ECMC Environmental Inspection

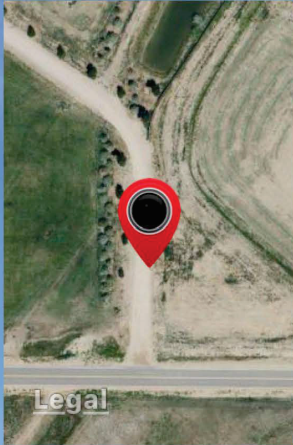


Preserve Drive showing signs of subsidence (uneven surface due to settling/sinking) within the area former excavation.





GPS MAP  
CAMERA



# Frederick, CO, United States

KP Kauffman - Facility 3 @ Rasmussen Flowline  
Photo 4

Lat 40.110244° Long -105.024368°

06/08/2025 Wednesday, 10:18 AM

8.0 mph

77%

76 °F

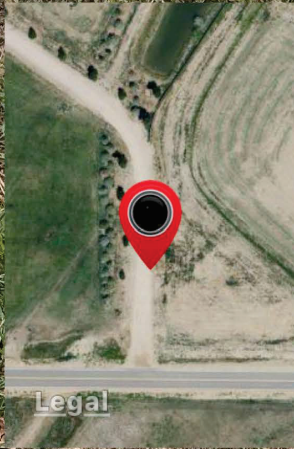
47° NE

4923 ft

Tag: ECMC Environmental Inspection



GPS MAP  
CAMERA



**Frederick, CO, United States**  
KP Kauffman - Facility 3 @ Rasmussen Flowline  
Photo 5

Lat 40.110244° Long -105.024368°

06/08/2025 Wednesday, 10:41 AM

8.0 mph

77%

76 °F

98° E

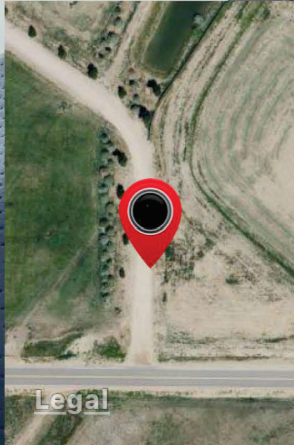
4923 ft

Tag: EDMC Environmental Inspection





GPS MAP  
CAMERA



## Frederick, CO, United States

KP Kauffman - Facility 3 @ Rasmussen Flowline  
Photo 6

Lat 40.110244° Long -105.024368°

06/08/2025 Wednesday, 10:46 AM



8.0 mph



77%



76 °F

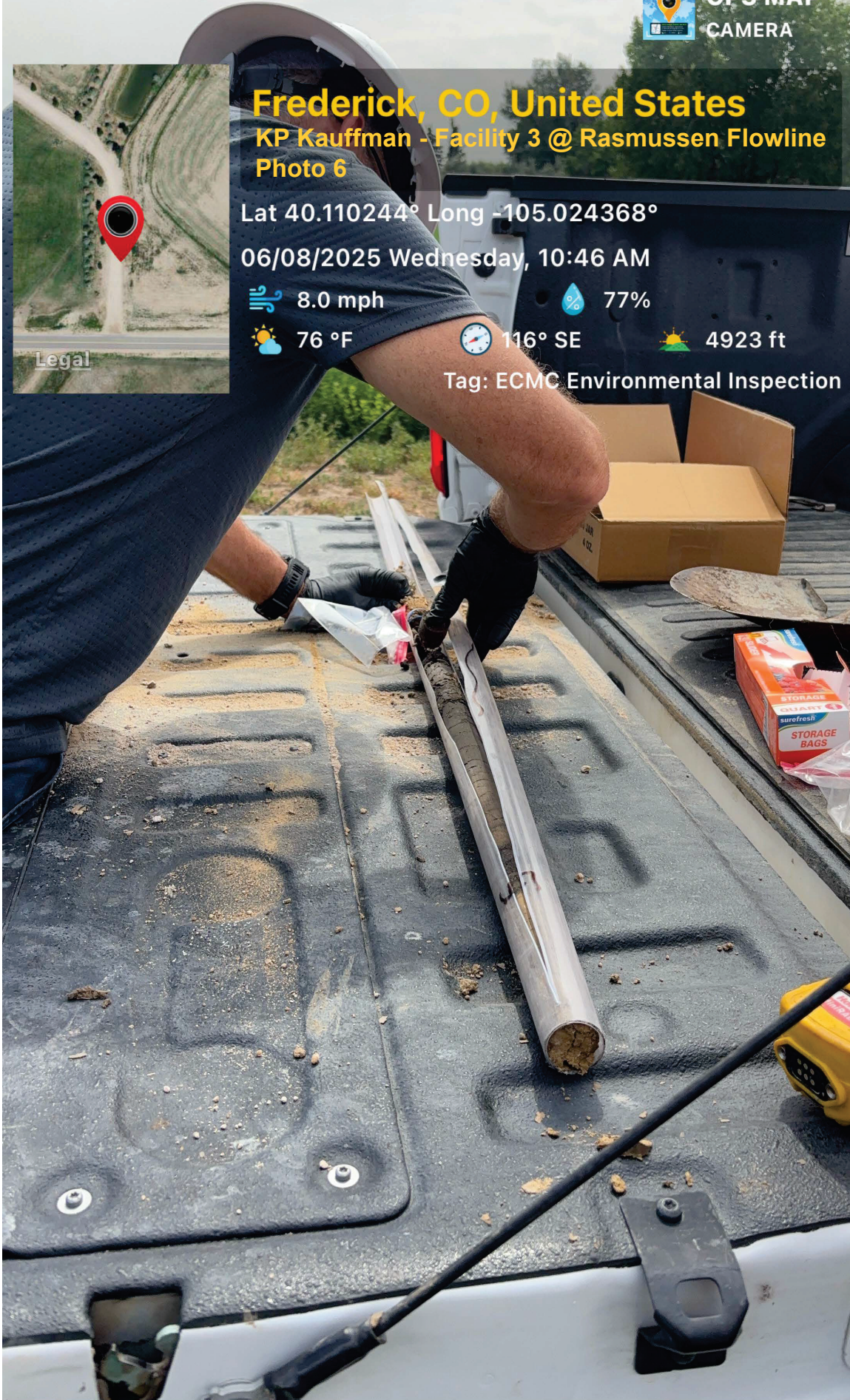


116° SE



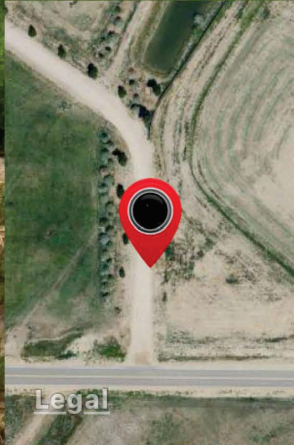
4923 ft

Tag: ECMC Environmental Inspection





GPS MAP  
CAMERA



**Frederick, CO, United States**  
KP Kauffman - Facility 3 @ Rasmussen Flowline  
Photo 7

Lat 40.110244° Long -105.024368°

06/08/2025 Wednesday, 10:49 AM



8.0 mph



77%



76 °F

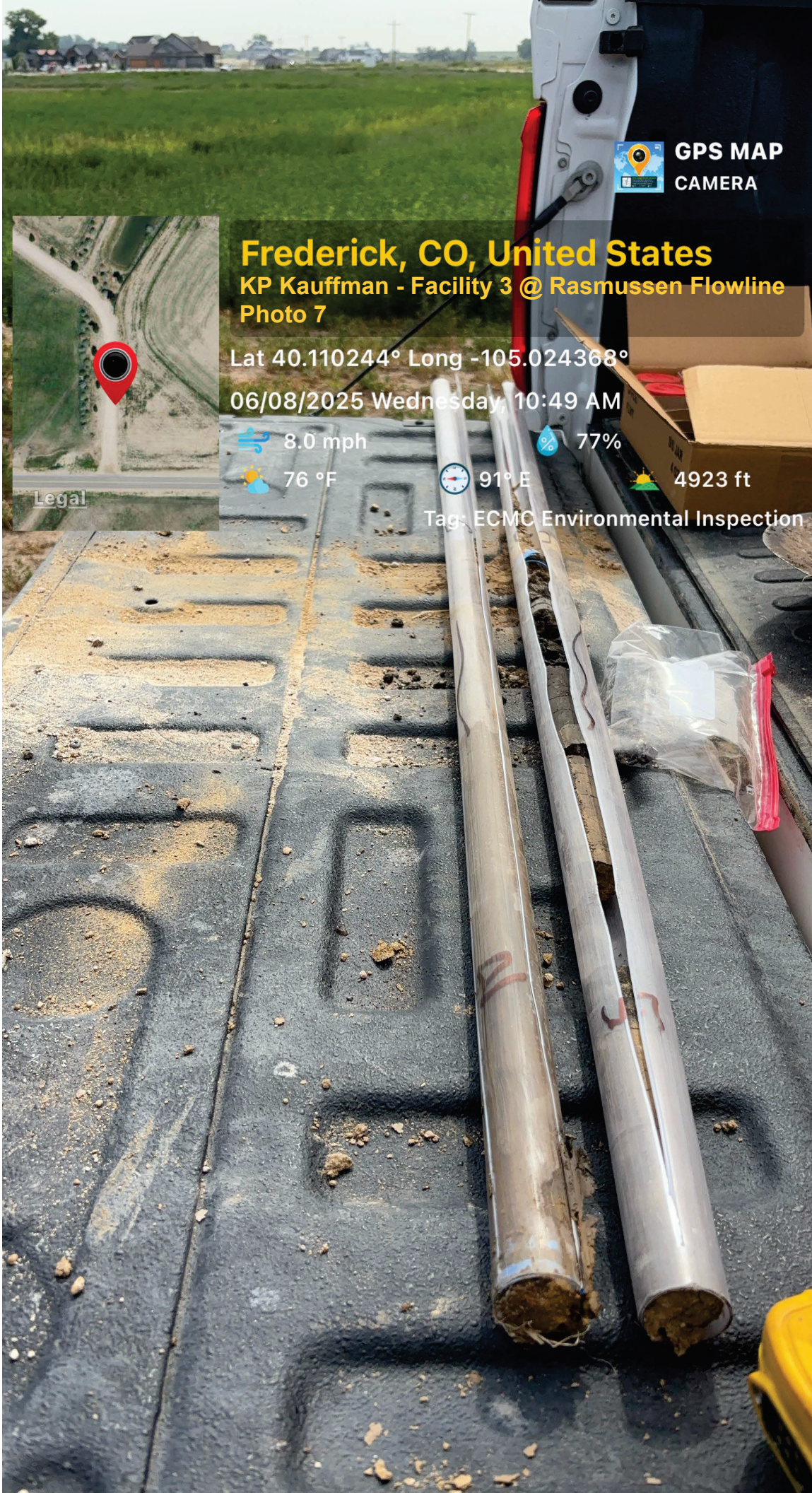


91° E



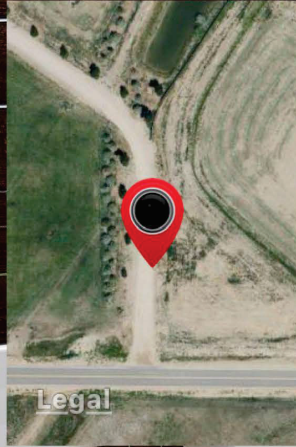
4923 ft

Tag: ECMC Environmental Inspection





GPS MAP  
CAMERA



# Frederick, CO, United States

KP Kauffman - Facility 3 @ Rasmussen Flowline  
Photo 8

Lat 40.110244° Long -105.024368°

06/08/2025 Wednesday, 12:23 PM



8.0 mph



77%



76 °F



89° E

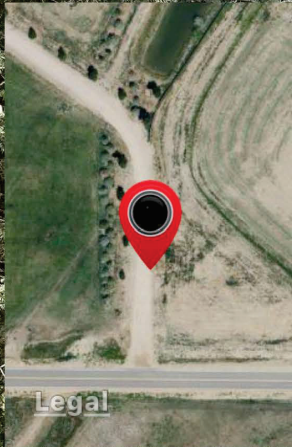


4923 ft

Tag: ECMC Environmental Inspection



GPS MAP  
CAMERA



## Frederick, CO, United States

KP Kauffman - Facility 3 @ Rasmussen Flowline  
Photo 9

Lat 40.110244° Long -105.024368°

06/08/2025 Wednesday, 12:24 PM



8.0 mph



77%



76 °F



232° SW

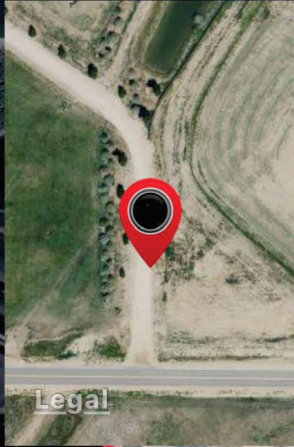


4923 ft

Tag: ECMC Environmental Inspection



GPS MAP  
CAMERA



## Frederick, CO, United States

KP Kauffman - Facility 3 @ Rasmussen Flowline  
Photo 10

Lat 40.110244° Long -105.024368°

06/08/2025 Wednesday, 12:28 PM

8.0 mph

77%

76°F

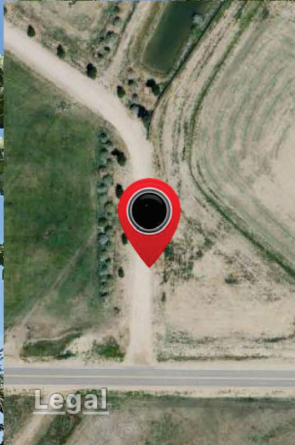
238° SW

4923 ft

Tag: ECMC Environmental Inspection

24 PCS.  
FLINT

GPS MAP  
CAMERA



# Frederick, CO, United States

KP Kauffman - Facility 3 @ Rasmussen Flowline  
Photo 11

Lat 40.110244° Long -105.024368°

06/08/2025 Wednesday, 12:35 PM

8.0 mph

77%

76°F

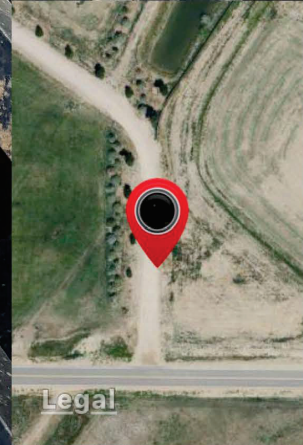
316° NW

4923 ft

Tag: ECMC Environmental Inspection



GPS MAP  
CAMERA



# Frederick, CO, United States

KP Kauffman - Facility 3 @ Rasmussen Flowline  
Photo 12

Lat 40.110244° Long -105.024368°

06/08/2025 Wednesday, 12:36 PM

8.0 mph

77%

76 °F

110° E

4923 ft

Tag: ECMC Environmental Inspection

Piece of torn liner  
embedded along  
Preserve Drive

