

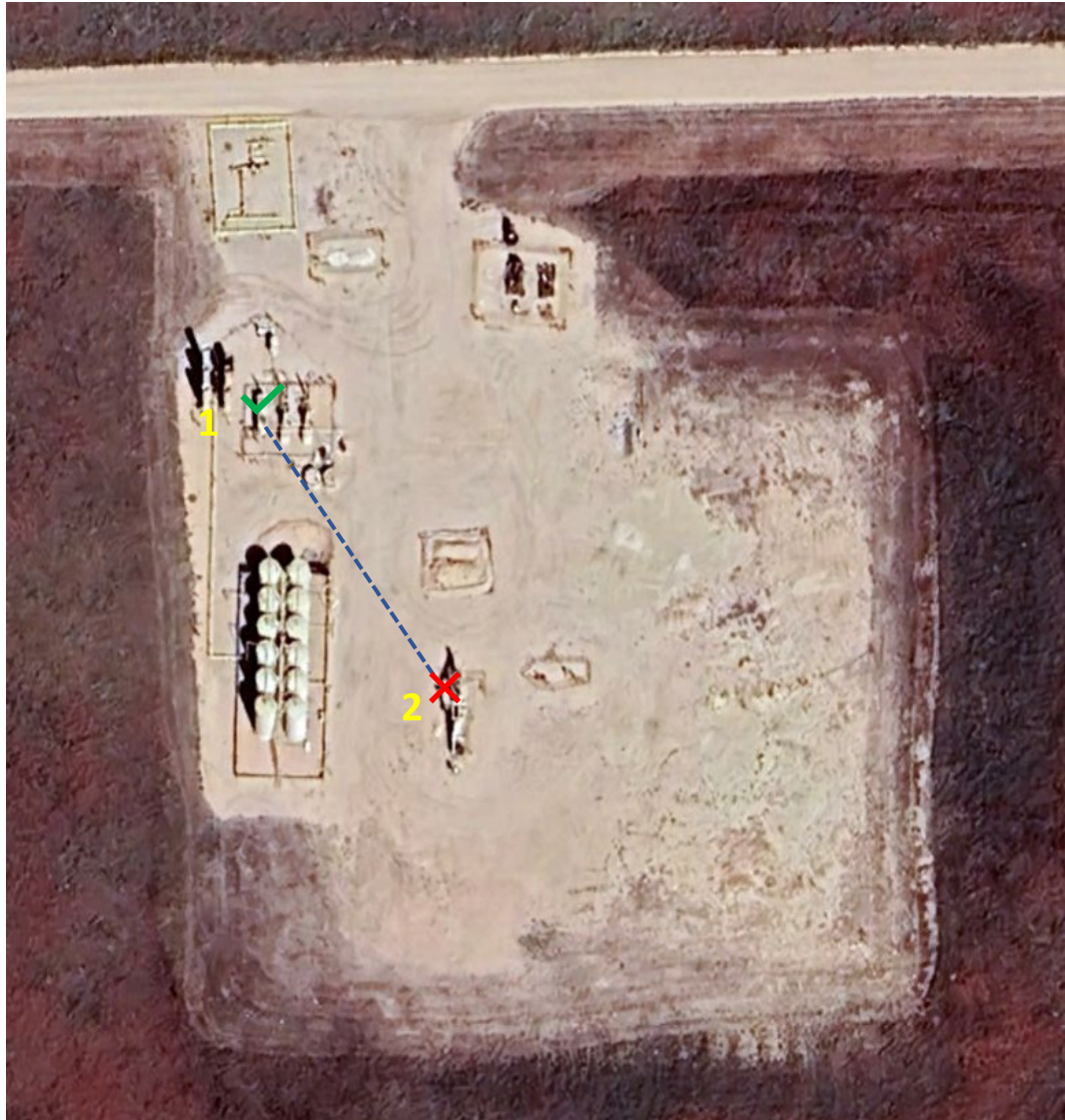
ANTELOPE P-T-17HZ (05-123-35600): Wellhead Cut/Cap and Equipment Removal

40.405470, -104.342730

NWNE Sec. 17 T5N, R62W, 6th PM

Weld County, Colorado

Bonanza Creek Energy (08960)



Equipment to be Removed		
Legend	Equipment On-Site	# Pieces of Equipment
1	Separator	1
2	ANTELOPE P-T-17HZ (05-123-35600) 40.405470, -104.342730	1

Legend	
Site Investigation Points	
✓	Visual Inspection Point
✗	Visual Inspection and Soil Sample
---	On-Location Flowline Corridor

ANTELOPE P-T-17HZ (05-123-35600): ¼ Mile Buffer - Wildlife and Hydrology Map

40.405470, -104.342730

NWNE Sec. 17 T5N, R62W, 6th PM

Weld County, Colorado

Bonanza Creek Energy (08960)

Legend

● Well (API Spot)

● Water Well

Receptor	DWR Receipt (Permit)	Distance (ft)	Direction	Well Depth(ft)	Static Water Level (ft)
Monitoring Well	0385493A (188080-)	240	NW	45	Dry
Monitoring Well (Permit Expired)	0024454 (24454-MH)	895	SE	Not Recorded	Not Recorded

NO HPH WITHIN ¼ MILE

