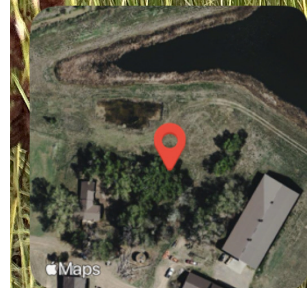


A network of monitoring wells completed as stickups was visible on location.



Frederick, CO, United States

Lat 40.123324, Long -105.012826

09/11/2025 04:47 PM GMT-06:00

ECMC : Environmental Inspection



80°F

189° S

8.99 mph

4904.92 ft

4.66 m

Looking at the open excavation. Barbed wire fencing surrounds the excavation. Weeds obscure visibility of the excavation base and sidewalls.



Frederick, CO, United States

Lat 40.123446, Long -105.012805

09/11/2025 05:00 PM GMT-06:00

ECMC : Environmental Inspection



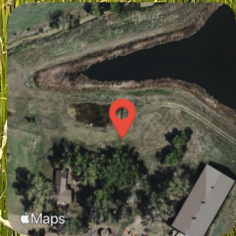
78°F

188° S

6.91 mph

4898.16 ft

12.55 m



Frederick, CO, United States

Lat 40.123466, Long -105.012879

09/11/2025 05:00 PM GMT-06:00

ECMC : Environmental Inspection



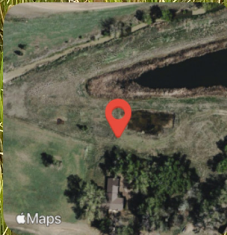
78°F

177° S

6.91 mph

4899.87 ft

10.88 m



Frederick, CO, United States

Lat 40.123513, Long -105.013327

09/11/2025 05:02 PM GMT-06:00

ECMC : Environmental Inspection



78°F

6.91 mph

4900.98 ft

3.83 m

346° N