

Multiple KP Kauffman underground utility pin flags and pipeline markers were observed east of the spill.



Frederick, CO, United States

Lat 40.123518, Long -105.013336

09/11/2025 05:02 PM GMT-06:00

ECMC : Environmental Inspection



78°F

89° E

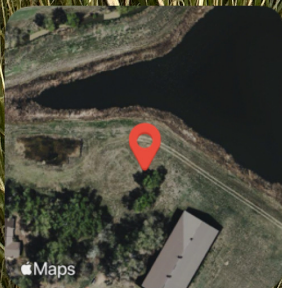
6.91 mph

4901.57 ft

4.2 m

Apple Maps

MARKER # _____
WARNING
OIL & GAS PIPELINE
KPK
KAUFFMAN WELL SERVICE, INC.
BEFORE EXCAVATING
OR IN CASE OF EMERGENCY
Call 303-825-1822 or 911



Frederick, CO, United States

Lat 40.123506, Long -105.012460
09/11/2025 05:16 PM GMT-06:00
ECMC : Environmental Inspection



78°F

81° E



6.91 mph



4890.58 ft

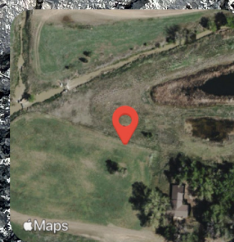


4.75 m

Petroleum hydrocarbon fluid has daylighted to the surface. Petroleum hydrocarbon fluid has pooled on the surface and has saturated vegetation.



A hole is visible on the ground surface at the source of the spill.



Frederick, CO, United States

Lat 40.123514, Long -105.013793

09/11/2025 05:35 PM GMT-06:00

ECMC : Environmental Inspection



78°F

136° SE

6.91 mph

4902.46 ft

10.13 m



Frederick, CO, United States

Lat 40.123540, Long -105.013843

09/11/2025 05:36 PM GMT-06:00

ECMC : Environmental Inspection



78°F

53° NE

6.91 mph

4899.9 ft

9.17 m

A bird feather is located in close proximity to the spill.



Frederick, CO, United States

Lat 40.123563, Long -105.013850
09/11/2025 05:43 PM GMT-06:00
ECMC : Environmental Inspection



78°F

151° SE



6.91 mph



4900.13 ft



6.63 m

Apple Maps



Frederick, CO, United States

Lat 40.123558, Long -105.013840

09/11/2025 05:43 PM GMT-06:00

ECMC : Environmental Inspection



78°F

109° E

6.91 mph

4899.34 ft

6.53 m



Maps

Looking at Idaho Creek and the Riverine Wetland.



Frederick, CO, United States

Lat 40.123826, Long -105.013867

09/11/2025 05:43 PM GMT-06:00

ECMC : Environmental Inspection



78°F

313° NW

Maps

6.91 mph

4899.31 ft

3.47 m

Idaho Creek was flowing at the time of the inspection; the channel appeared to be unlined.



Frederick, CO, United States

Lat 40.123792, Long -105.014043

09/11/2025 05:43 PM GMT-06:00

ECMC : Environmental Inspection



78°F



175° S

Maps



6.91 mph

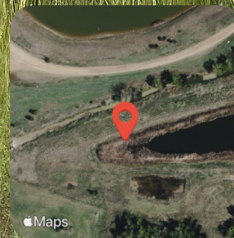


4900.82 ft



6.38 m

Looking towards the spill location from the western corner of the unmapped surface water/pond. visibility to the portion of the unmapped surface water/pond located closest to the spill was obscured by vegetation.



Frederick, CO, United States

Lat 40.123887, Long -105.013356
09/11/2025 05:44 PM GMT-06:00
ECMC : Environmental Inspection



78°F

109° E

6.91 mph

4901.05 ft

3.29 m