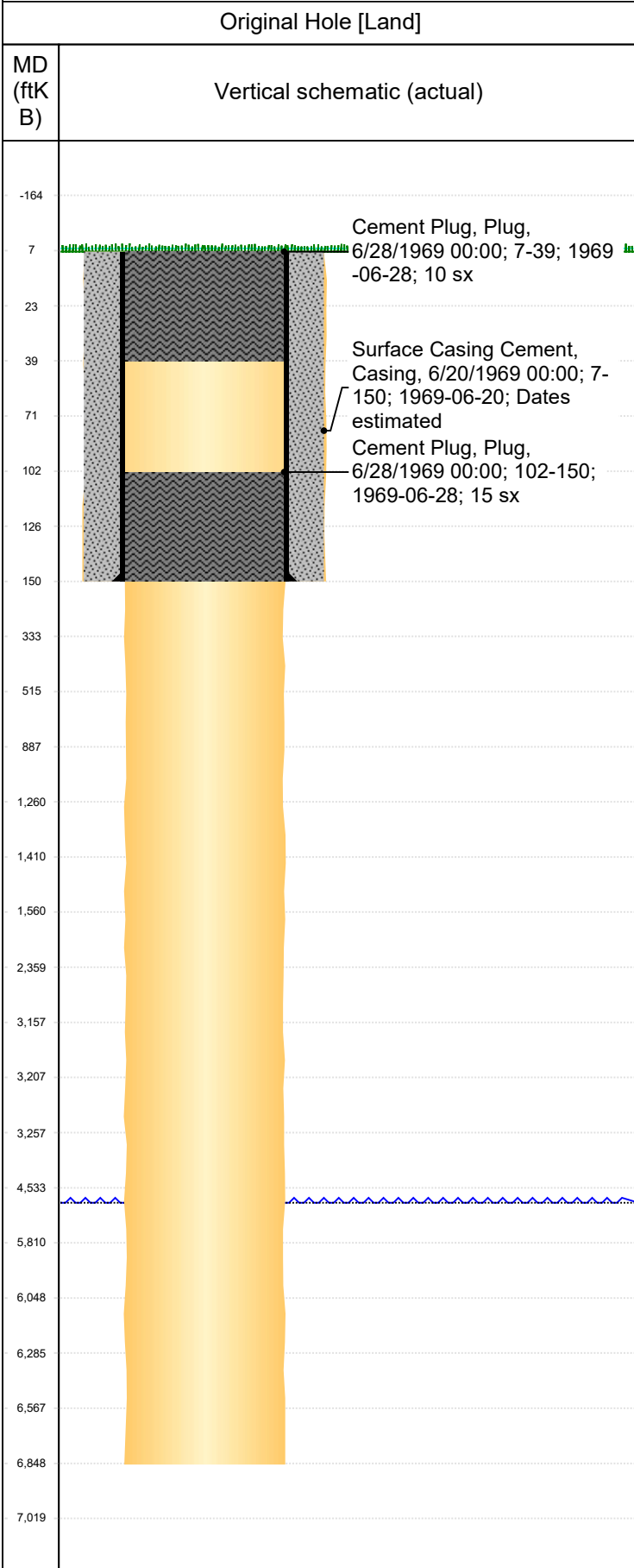




PA Wellbore For State - Vertical

Well Name: U S A 1



Well Header				
Surface UWI 0512307092	Business Unit Rockies	Gov Auth Dist Land	Prod Tree Loc Land	
Orig. KB to Gnd (ft) 7.00	Original Spud Date 6/19/1969	Abandon Date	Well Sub-Status DA	High... N
Comment Information from State Records. KB at 7' from log'. Well depth from State records interface, but no forms indicating a well total depth ever achieved. Production casing materials from Well Permit, nothing to indicate it was ever set. Abandonment information 15 sks at bottom of surface pipe and 10 sks at top of surface pipe.				
Geologic Horizons				
Formation Name UPPER PIERRE AQUIFER-BASE PROD				Final Top MD (ftKB) 1,410.0
Formation Name NIOBRARA-TOP PROD				Final Top MD (ftKB) 5,910.0
Formation Name A SAND-BASE PROD				Final Top MD (ftKB) 3,089.2
Formation Name PARKMAN				Final Top MD (ftKB) 3,207.2
Formation Name FOXHILLS-BASE PROD				Final Top MD (ftKB) 413.8
Formation Name CARLILE				Final Top MD (ftKB) 6,235.0
Formation Name A SAND-TOP PROD				Final Top MD (ftKB) 2,451.5
Formation Name UPPER PIERRE AQUIFER-TOP PROD				Final Top MD (ftKB) 864.0
Formation Name Greenhorn				Final Top MD (ftKB) 6,460.0
Formation Name Bentonite				Final Top MD (ftKB) 6,545.0
Formation Name D Sand				Final Top MD (ftKB) 6,652.0
Formation Name J Sand				Final Top MD (ftKB) 6,738.0
Formation Name Skull Creek				Final Top MD (ftKB) 6,818.0
Surface Location (Congressional)				
Qtr 3 NE	Qtr 4 NW	Section 4	Twonshp 8 N	Range 59 W
Latitude (°) 40.697215		Longitude (°) -103.983409		
Wellbore Sections				
Section Des	Hole Size (in)	Top Depth (ftKB)	Btm Depth (ftKB)	
Surface	12 1/4	7.0	150.0	
Production	7 7/8	150.0	6,848.0	
Casing Strings				
Csg Des	Run Date	OD (in)	Wt/Len (lb/ft)	Grade
Surface	6/10/1969	8 5/8	24.00	
Top Depth (MD) (ftKB)	Set Depth (MD) (ftKB)			
7	150			
Cement				
Des	Start Date	Top (ftKB)	Btm (ftKB)	
Surface Casing Cement	6/20/1969	7.0	150.0	
Cement Plug	6/28/1969	102.0	150.0	
Cement Plug	6/28/1969	7.0	39.0	
Stim/Frac Summary				
Min Top Depth (ftKB)		Max Btm Depth (ftKB)		
Perforations				
Linked Zone	Date	Top Depth (ftKB)	Bottom Depth (ftKB)	
Other In Hole				
Run Date	Des	Make	OD (in)	Top (ftKB)
Logs				
Date	Type	Depth Top (MD) (ftKB)	Btm (ftKB)	