

Final Reclamation Inspection

August 25, 2025

Operator: KERR MCGEE OIL & GAS ONSHORE LP - 47120

Location ID: 327743

Inspection Document #: 718800782

Weld County, CO

Katelyn Mitchem
Reclamation Specialist, ECMC



COLORADO

**Energy & Carbon Management
Commission**

Department of Natural Resources

Inspection Photos
Location Name: HSR-SMOLOWE #9-1A
Location ID: 327743

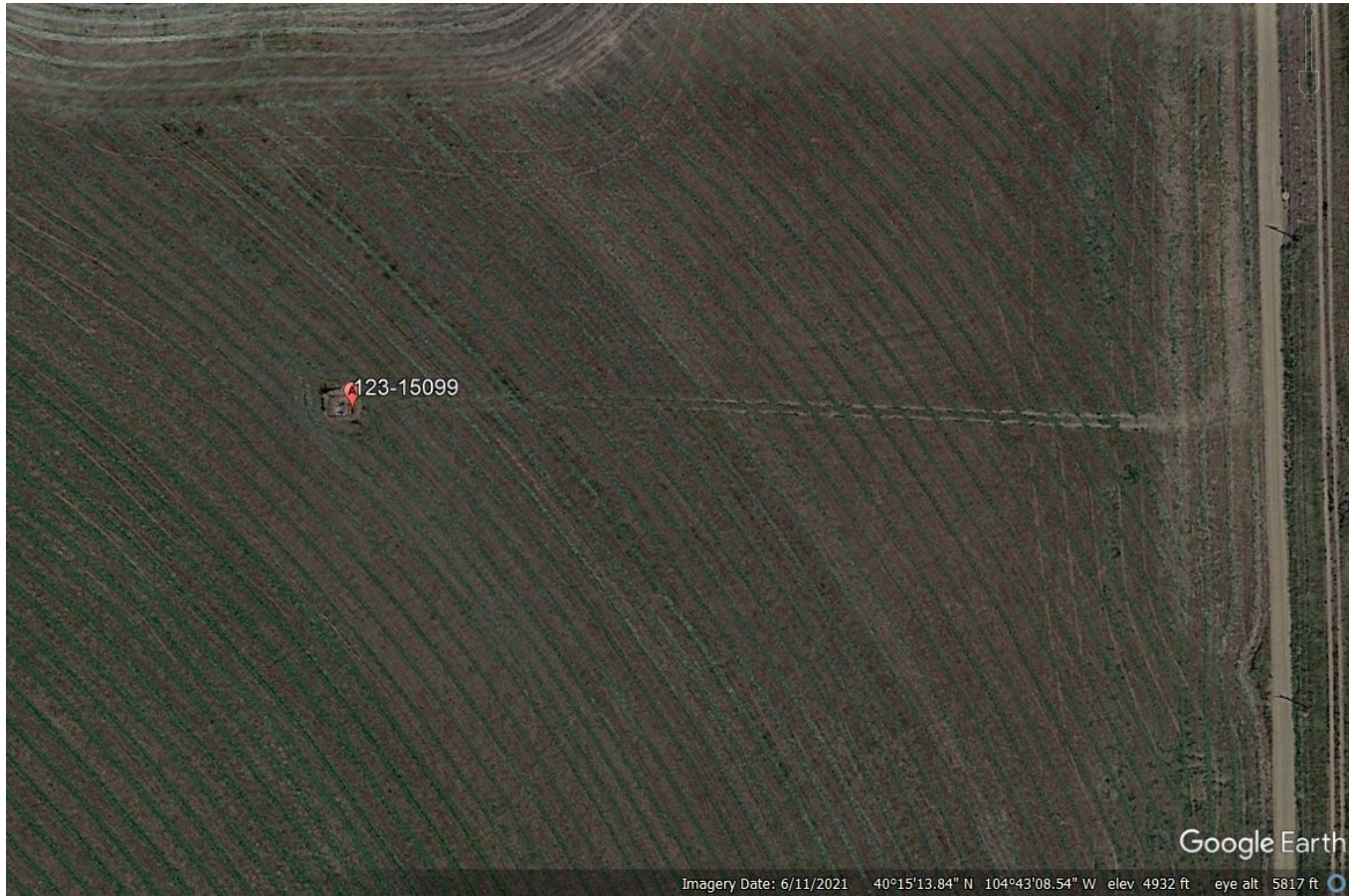


Photo 1. Google Earth Aerial Imagery from June 11, 2021 depicting the well location and access road at the time of active operations.

Inspection Photos
Location Name: HSR-SMOLOWE #9-1A
Location ID: 327743



Photo 2. Google Earth Aerial Imagery from February 4, 2025 depicting the well location and access road after plugging operations.

Inspection Photos

Location Name: HSR-SMOLOWE #9-1A

Location ID: 327743



Photo 3. Photo taken of the well location, facing north. Photo illustrates that vegetation establishment does not meet Rule 1004 standards and bare ground remains at the location.



Photo 4. Photo taken of the well location, facing east. See comments under Photo 3.



Inspection Photos

Location Name: HSR-SMOLOWE #9-1A

Location ID: 327743



Photo 5. Photo taken from the well location, facing south. See comments under Photo 3.



Photo 6. Photo taken from the well location, facing west. See comments under Photo 3.



Inspection Photos

Location Name: HSR-SMOLOWE #9-1A

Location ID: 327743



Photo 7. Photo taken from the well location, facing east. See comments under Photo 3.



Photo 8. Photo taken of the access road to the well location, facing west, towards the location. Photo illustrates that vegetation has not established to Rule 1004 standards, gravel remains, and weedy annual vegetation including puncture vine (*Tribulus terrestris*) was observed across the road.



Inspection Photos

Location Name: HSR-SMOLOWE #9-1A

Location ID: 327743



Photo 9. Photo taken of the access road to the well location, facing west, towards the location. See comments under Photo 8.



Photo 10. Photo taken of the access road to the well location, facing east, away from the location. See comments under Photo 8.



Inspection Photos

Location Name: HSR-SMOLOWE #9-1A

Location ID: 327743



Photo 11. Photo taken of ground cover along the access road. Photo illustrates gravel and puncture vine (*Tribulus terrestris*), a List C Noxious Weed species.



Photo 12. Photo taken of the reference area, southwest of the location, facing southwest. Photo illustrates corn cropland.

