

EDITH ANN 33-21 (12320624_FL): Abandon in Place Layout

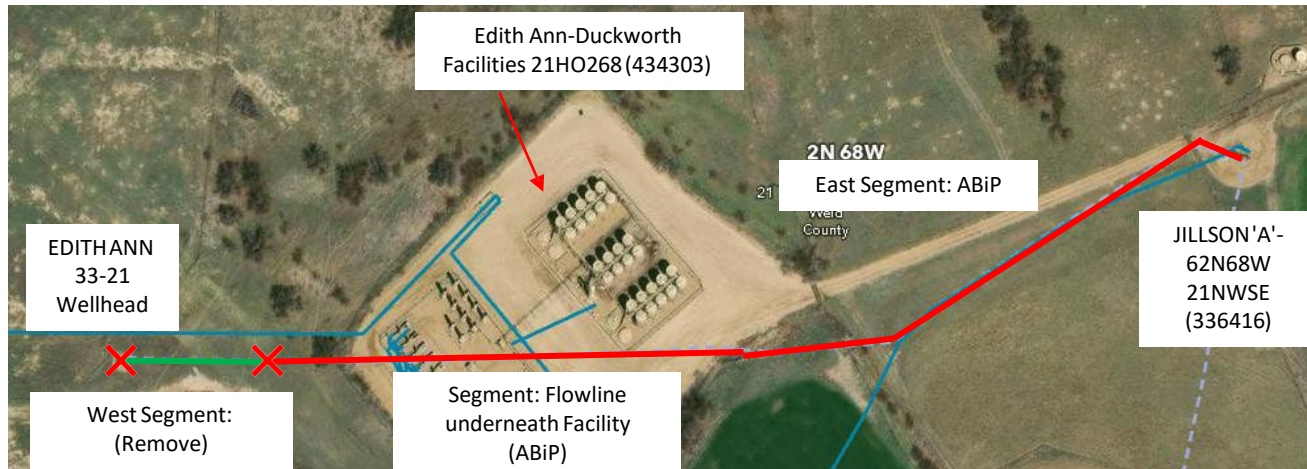
40.122487, -105.006202

NWSE Sec. 21 T2N, R68W, 6th PM

Weld County, Colorado

Crestone Peak Resources (10633)

Flowline Unique OperFeatID	Line Type	Start Location Latitude	Start Location Longitude	End Location Latitude (Cut Point)	End Location Longitude (Cut Point)	Segment Length (ft)	Segment	Abandonment Type
12320624_FL	Multiphase	40.122487	-105.006202	40.1224935	-105.0056251	160	Green	Remove
12320624_FL	Multiphase	40.1224935	-105.0056251	40.1231185	-105.0016676	1175	Red	ABiP



Segment End Points

✗ Indicates where flowline abandonment type changes