

RODMAN BRUNZ 21-26 (12321586_FL): Abandon in Place Layout

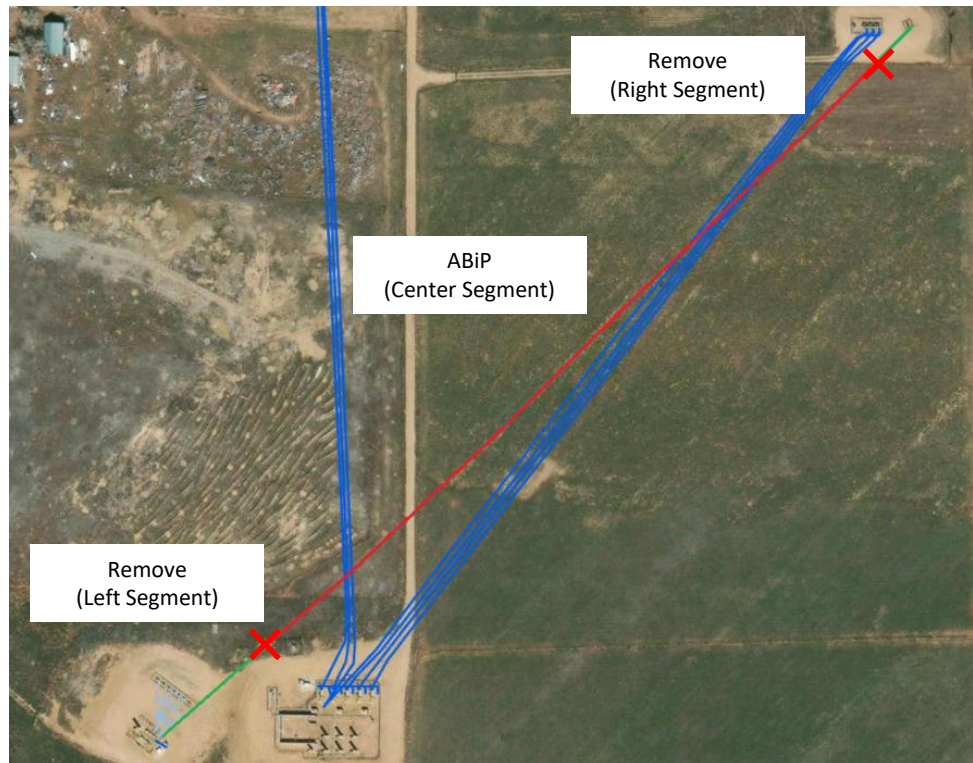
40.114903, -104.746409

NENW Sec. 26 T2N, R66W, 6th PM

Weld County, Colorado

Crestone Peak Resources (10633)

Flowline Unique OperFeatID	Line Type	Start Location Latitude	Start Location Longitude	End Location Latitude (Cut Point)	End Location Longitude (Cut Point)	Segment Length (ft)	Segment	Abandonment Type
12321586_FL	Multiphase	40.114903	-104.746409	40.11475	-104.746612	75	Green	Remove
12321586_FL	Multiphase	40.11475	-104.746612	40.112225	-104.750064	1335	Red	ABiP
12321586_FL	Multiphase	40.112225	-104.750064	40.111821	-104.750692	230	Green	Remove



Segment End Points

✗ Indicates where flowline abandonment type changes