

Chevron Rockies Business Unit

Field Qualitative Criteria for ECMC Reporting Associated with the Discovery of Potentially Impacted Material

If answered **Yes** to any of the questions listed below, this may suggest the presence of potentially impacted materials as outlined in ECMC Rule 912. Out of an abundance of caution, a “Yes” response will be reported to the ECMC within 24 hours after discovery, regardless of laboratory results. **Immediately notify the RBU Remediation Team.** Include a copy of this Field Qualitative Spill Criteria Checklist in the field Report.

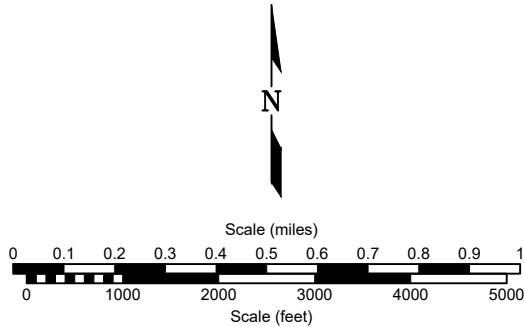
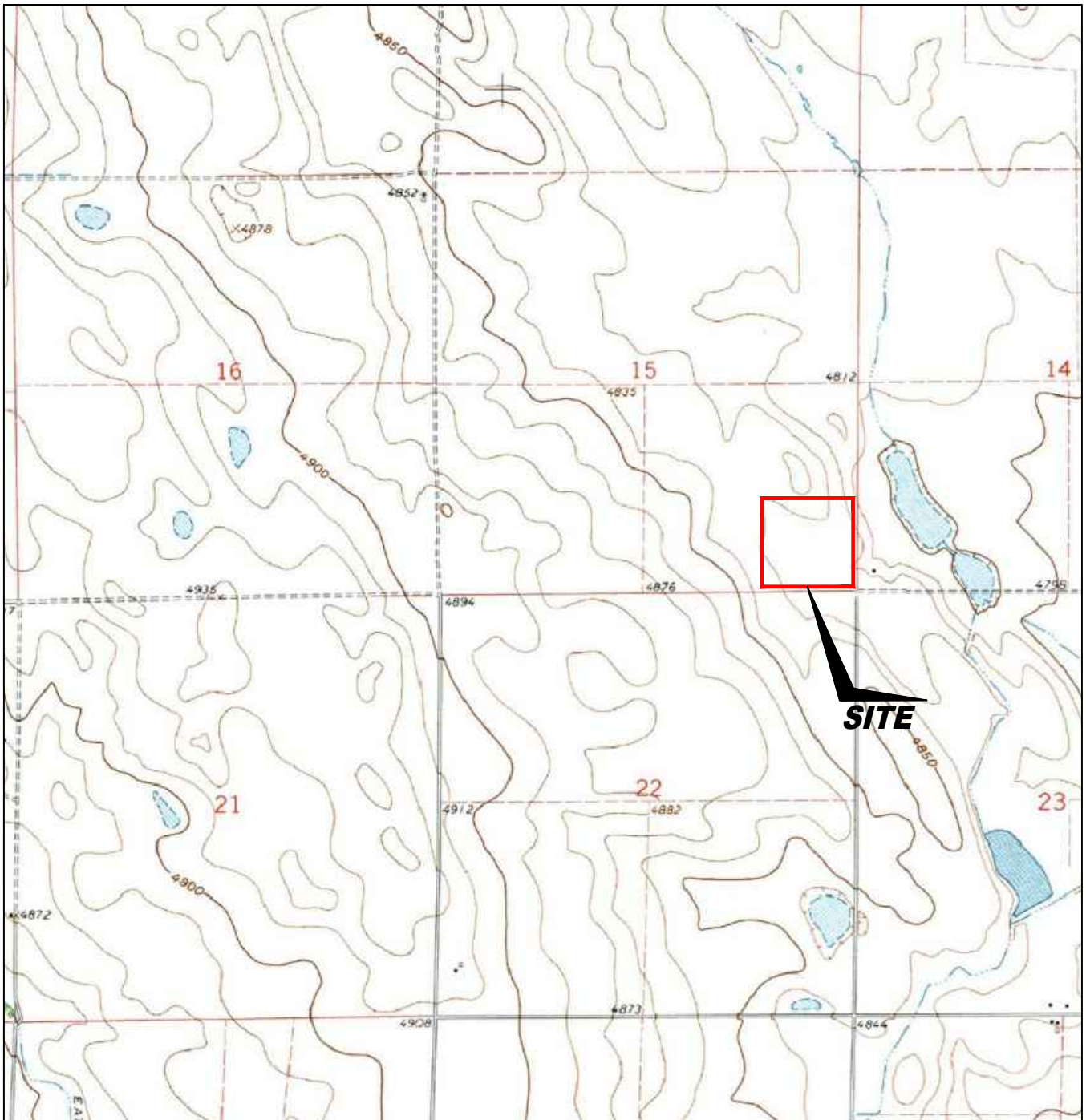
Please answer the following questions when on-site:

1. Is there visible petroleum hydrocarbon staining in the soil?
(Yes / **No**)
2. Does the soil sample from the stained area have a petroleum odor?
(Yes / **No**)
3. Is there a petroleum hydrocarbon sheen on the nearby surface water?
(Yes / **No**)
4. Does there appear to be a sheen on the surface of accumulated groundwater or seeps within the excavation indicative of petroleum?
(Yes / **No**)
5. Is stained soil in contact with groundwater?
(Yes / **No**)

Please Include relevant photos of the site conditions for items 1-5.

Location name: FURROW USX AB 15-99HZ FL (REM # 30076)


Please Circle Facility Type: Well / **Flowline** / Production Facility / Other



USGS 7.5 MINUTE SERIES (TOPOGRAPHIC)

Figure 1
SITE LOCATION MAP
NOBLE ENERGY INC ~ FURROW USX AB15-99HZ


SESE Sec. 15, T7N, R64W, 6th PM
 Weld County, Colorado
 40.568360°, -104.527110°

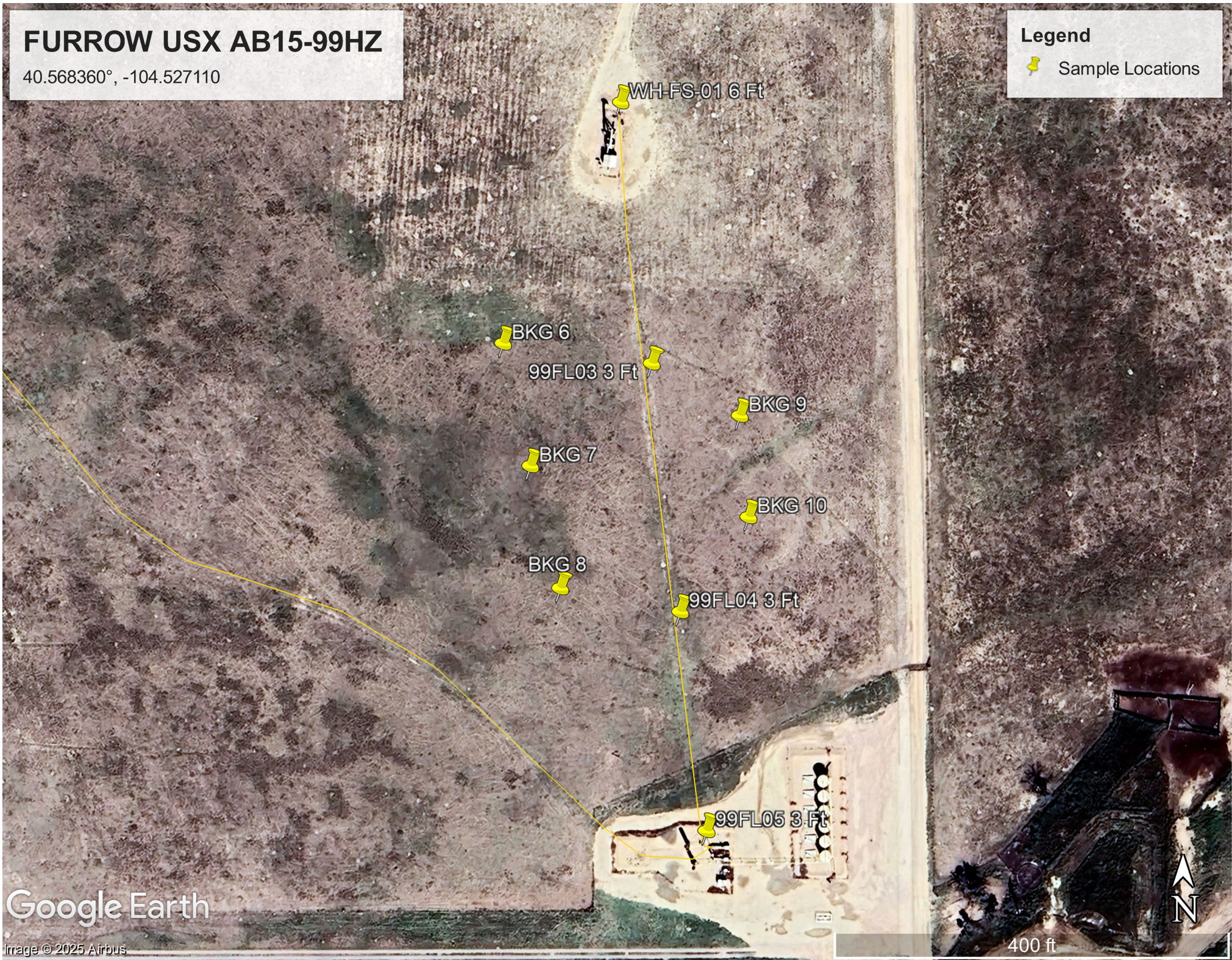
Project # C024-009	API # 123-31249	Facility #	
Date 5/21/24	Remediation # 30076	Filename 24009T	

FURROW USX AB15-99HZ

40.568360°, -104.527110

Legend

 Sample Locations



Google Earth

Image © 2025 Airbus

400 ft

TABLE 1
FIELD DATA SUMMARY TABLE
NOBLE 100322
FURROW USX AB 15-99HZ, WELD COUNTY, COLORADO
REM # 30076

Sample ID	Sample Date	Depth (ft)	GPS Data		PDOP Value	VOC Concentration (ppm)
			Latitude	Longitude		
99FL02@4.0'	1/12/2024	4.0 Ft	40.5663081	-104.5267533	-	0.0
PJPN01@4.0'	1/19/2024	4.0 Ft	40.5682096	-104.5271364	-	0.0
PJPS01@4.0'	1/19/2024	4.0 Ft	40.5681865	-104.5271359	-	0.0
PJPE01@4.0'	1/19/2024	4.0 Ft	40.5681964	-104.5271136	-	0.0
PJPW01@4.0'	1/19/2024	4.0 Ft	40.5681966	-104.5271550	-	0.0
99FL01@5.0'	1/12/2024	5.0 Ft	40.5683527	-104.5270946	-	7.1
PJPB01@5.0'	1/19/2024	5.0 Ft	40.5681968	-104.5271358	-	0.0
99FL03 3Ft	8/27/2025	3Ft	40.5676077	-104.5269885	0.80	0.0
99FL04 3ft	8/27/2025	3Ft	40.5669138	-104.5268854	0.80	1.9
99FL05 3Ft	8/27/2025	3Ft	40.566312	-104.5267918	0.80	4.4
WH Swall4ft	8/28/2025	4Ft	40.5683291	-104.5271024	0.80	0.0
WH Ewall 4ft	8/28/2025	4Ft	40.5683537	-104.5270635	0.80	5.8
WH Nwall 4ft	8/28/2025	4Ft	40.5683789	-104.5271029	0.80	5.2
WH Wwall 4ft	8/28/2025	4Ft	40.5683548	-104.5271394	0.80	0.0
WHFS01 6ft	8/28/2025	6Ft	40.5683501	-104.5271027	0.80	
BKG01	1/19/2024	0.5 Ft, 4.0 Ft, 5.0 Ft	40.5667636	-104.5262640	-	0.0
BKG02	1/19/2024	0.5 Ft, 4.0 Ft, 5.0 Ft	40.5666866	-104.5265116	-	0.0
BKG03	1/19/2024	0.5 Ft, 4.0 Ft, 5.0 Ft	40.5666232	-104.5266901	-	0.0
BKG04	1/19/2024	0.5 Ft, 4.0 Ft, 5.0 Ft	40.5665236	-104.5269812	-	0.0
BKG05	1/19/2024	0.5 Ft, 4.0 Ft, 5.0 Ft	40.5664732	-104.5271453	-	0.0
BKG6 (3Ft,6Ft)	8/27/2025	3.0 Ft, 6.0 Ft	40.5676642	-104.5275402	0.80	0.0
BKG7 (3Ft,6Ft)	8/27/2025	3.0 Ft, 6.0 Ft	40.5673212	-104.5274398	0.80	0.0
BKG 8 (3Ft,6Ft)	8/27/2025	3.0 Ft, 6.0 Ft	40.5669784	-104.5273259	0.80	0.0
BKG9 (3Ft,6Ft)	8/27/2025	3.0 Ft, 6.0 Ft	40.5674613	-104.5266623	0.80	0.0
BKG10 (3Ft,6Ft)	8/27/2025	3.0 Ft, 6.0 Ft	40.5671811	-104.5266346	0.70	0.0

1. Global Positioning System (GPS) data is provided in decimal degrees using North American Datum (NAD) 83 UTMZone 13 North.

2. Volatile organic compound (VOC) concentrations are measured in the field using a photoionization detector (PID).

PDOP = Position Dilution of Precision

ppm = Parts per million

in. = Inches

ft. = Feet

bgs = Below ground surface

TABLE 2
SUMMARY OF VOLATILE ORGANIC SOIL CHEMISTRY DATA
NOBLE 100322
FURROW USX AB 15-99HZ, WELD COUNTY, COLORADO
REM # 30076

Sample ID	Sample Date	Depth (ft)	Benzene (mg/kg)	Toluene (mg/kg)	Ethyl-Benzene (mg/kg)	Xylenes (mg/kg)	1,2,4-Trimethyl-Benzene (mg/kg)	1,3,5-Trimethyl-Benzene (mg/kg)	Naphthalene (mg/kg)	TPH (mg/kg)	TPH GRO (mg/kg)	TPH DRO (mg/kg)	TPH ORO (mg/kg)
ECMC Table 915-1 Limits (Residential SSL)			1.2	490	5.8	58	30	27	2	500	500**		
ECMC Table 915-1 Limits (Protection of Groundwater SSL)			0.0026	0.69	0.78	9.9	0.0081	0.0087	0.0038	500	500**		
99FL02@4.0'	1/12/2024	4.0 Ft	<0.0020	<0.0050	<0.0050	<0.010	<0.0050	<0.0050	<0.0038	<500	<0.50	<50	<50
PJPN01@4.0'	1/19/2024	4.0 Ft	<0.0020	<0.0050	<0.0050	<0.010	<0.0050	<0.0050	<0.0038	<500	<0.50	<50	<50
99FL01@5.0'	1/12/2024	5.0 Ft	<0.0020	<0.0050	<0.0050	<0.010	<0.0050	<0.0050	<0.0038	<500	<0.50	67	<50
PJPB01@5.0'	1/19/2024	5.0 Ft	<0.0020	<0.0050	<0.0050	<0.010	<0.0050	<0.0050	<0.0038	<500	<0.50	<50	<50
99FL03 3Ft	8/27/2025	3.0 Ft	<0.002	<0.002	<0.002	<0.002	<0.002	<0.002	<0.002	<500	<0.208	<26.0	<104
99FL04 3Ft	8/27/2025	3.0 Ft	<0.002	<0.002	<0.002	<0.002	<0.002	<0.002	<0.002	<500	<0.213	<26.6	<106
99FL05 3Ft	8/27/2025	3.0 Ft	0.004	<0.002	<0.002	<0.002	<0.002	<0.002	<0.002	<500	<0.232	<29.0	<116

1. Bold values exceed the ECMC Table 915-1 limit(s)
 2. Red & blue highlighted soil analytical values indicate an exceedance of the referenced soil screening level (SSL)
 3. * Indicates laboratory minimum detection limit in excess of SSL
 4. ** Summation of GRO+DRO+ORO must be less than 500 mg/kg
- (<) = Analytical result is less than the indicated laboratory reporting limit.
TPH-GRO = Total petroleum hydrocarbons - gasoline range organics
TPH-DRO = Total petroleum hydrocarbons - diesel range organics
TPH-ORO = Total petroleum hydrocarbons - oil range organics
mg/kg = Milligrams per kilogram
ft. = Feet
bgs = Below ground surface
NA - Not analyzed

TABLE 3
SUMMARY OF POLYCYCLIC AROMATIC HYDROCARBON SOIL CHEMISTRY DATA
NOBLE 100322
FURROW USX AB 15-99HZ, WELD COUNTY, COLORADO
REM # 30076

Sample ID	Sample Date	Depth (ft)	Acenaphthene (mg/kg)	Anthracene (mg/kg)	Benzo (a) Anthracene (mg/kg)	Benzo (a) Pyrene (mg/kg)	Benzo (b) Fluoranthene (mg/kg)	Benzo (k) Fluoranthene (mg/kg)	Chrysene (mg/kg)	Dibenzo (a,h) Anthracene (mg/kg)	Fluoranthene (mg/kg)	Fluorene (mg/kg)	Indeno (1,2,3-cd) Pyrene (mg/kg)	Pyrene (mg/kg)	1-Methyl - Naphthalene (mg/kg)	2-Methyl- Naphthalene (mg/kg)
ECMC Table 915-1 Limits (Residential SSL)			360	1800	1.1	0.11	1.1	11	110	0.11	240	240	1.1	180	18	24
ECMC Table 915-1 Limits (Protection of Groundwater SSL)			0.55	5.8	0.011	0.24	0.3	2.9	9	0.096	8.9	0.54	0.98	1.3	0.006	0.019
99FL02@4.0'	1/12/2024	4.0 Ft	<0.00500	<0.00500	<0.00500	<0.00500	<0.00500	<0.00500	<0.00500	<0.00500	<0.00500	<0.00500	<0.00500	<0.00500	<0.00500	<0.00500
PJPN01@4.0'	1/19/2024	4.0 Ft	<0.00500	<0.00500	<0.00500	<0.00500	<0.00500	<0.00500	<0.00500	<0.00500	<0.00500	<0.00500	<0.00500	<0.00500	<0.00500	<0.00500
99FL01@5.0'	1/12/2024	5.0 Ft	<0.00500	<0.00500	0.00646	0.0288	0.0359	0.00851	0.0231	0.00507	0.0547	<0.00500	0.0234	0.0694	<0.00500	<0.00500
PJPB01@5.0'	1/19/2024	5.0 Ft	<0.00500	<0.00500	<0.00500	<0.00500	<0.00500	<0.00500	<0.00500	<0.00500	<0.00500	<0.00500	<0.00500	<0.00500	<0.00500	<0.00500
99FL03 3Ft	8/27/2025	3.0 Ft	<0.021	<0.021	<0.005	<0.021	<0.021	<0.021	<0.021	<0.021	<0.021	<0.021	<0.021	NA	<0.002	<0.002
99FL04 3Ft	8/27/2025	3.0 Ft	<0.021	<0.021	<0.005	<0.021	<0.021	<0.021	<0.021	<0.021	<0.021	<0.021	<0.021	NA	<0.002	<0.002
99FL05 3Ft	8/27/2025	3.0 Ft	<0.023	<0.023	<0.006	<0.023	<0.023	<0.023	<0.023	<0.023	<0.023	<0.023	<0.023	NA	<0.002	<0.002

1. Bold values exceed the ECMC Table 915-1 limit(s)
 2. Red & blue highlighted soil analytical values indicate an exceedance of the referenced soil screening level (SSL)
 3. * Indicates laboratory minimum detection limit in excess of SSL
 4. ** Summation of GRO+DRO+ORO must be less than 500 mg/kg
- (<) = Analytical result is less than the indicated laboratory reporting limit.
TPH-GRO = Total petroleum hydrocarbons - gasoline range organics
TPH-DRO = Total petroleum hydrocarbons - diesel range organics
TPH-ORO = Total petroleum hydrocarbons - oil range organics
mg/kg = Milligrams per kilogram
ft. = Feet
bgs = Below ground surface
NA = Not analyzed

TABLE 4
SUMMARY OF SOIL SUITABILITY FOR RECLAMATION
NOBLE 100322
FURROW USX AB 15-99HZ, WELD COUNTY, COLORADO
REM # 30076

Sample ID	Sample Date	Depth (ft)	pH (Standard Units)	EC (mmhos/cm)	SAR (Standard Units)	Boron (mg/L)
ECMC Table 915-1 Soil Suitability Limits			6 - 8.3	4	6	2
99FL02@4.0'	1/12/2024	4.0 Ft	8.66	0.116	0.191	<2.00
PJPN01@4.0'	1/19/2024	4.0 Ft	8.97	0.120	0.132	<2.00
99FL01@5.0'	1/12/2024	5.0 Ft	8.76	0.117	0.161	<2.00
PJPB01@5.0'	1/19/2024	5.0 Ft	8.99	0.166	0.374	<2.00
99FL03 3Ft	8/27/2025	3.0 Ft	7.82	0.178	0.192	0.132
99FL04 3Ft	8/27/2025	3.0 Ft	8.6	1.01	10.8	0.703
99FL05 3Ft	8/27/2025	3.0 Ft	8.12	0.357	0.51	0.259
BKG01@6.0"	1/19/2024	0.5 Ft	7.06	0.0367	0.0231	<2.00
BKG02@6.0"	1/19/2024	0.5 Ft	7.12	0.0334	0.0286	<2.00
BKG03@6.0"	1/19/2024	0.5 Ft	6.23	0.0480	0.0351	<2.00
BKG04@6.0"	1/19/2024	0.5 Ft	8.77	0.0556	0.0501	<2.00
BKG05@6.0"	1/19/2024	0.5 Ft	7.56	0.0428	0.142	<2.00
BKG6 3Ft	8/27/2025	3.0 Ft	7.45	0.0859	0.146	0.183
BKG7 3Ft	8/27/2025	3.0 Ft	8.19	0.507	1.98	0.462
BKG8 3Ft	8/27/2025	3.0 Ft	7.81	0.174	1.77	0.483
BKG9 3Ft	8/27/2025	3.0 Ft	8.18	0.299	0.670	0.281
BKG10 3Ft	8/27/2025	3.0 Ft	8.08	0.231	0.0937	0.268
BKG01@4.0'	1/19/2024	4.0 Ft	7.90	0.0673	0.130	<2.00
BKG02@4.0'	1/19/2024	4.0 Ft	9.27	0.164	0.815	<2.00
BKG03@4.0'	1/19/2024	4.0 Ft	8.73	0.621	4.32	<2.00
BKG04@4.0'	1/19/2024	4.0 Ft	8.82	0.0892	0.0519	<2.00
BKG05@4.0'	1/19/2024	4.0 Ft	9.48	0.375	0.845	<2.00
BKG01@5.0'	1/19/2024	5.0 Ft	8.15	0.262	1.35	<2.00
BKG02@5.0'	1/19/2024	5.0 Ft	8.68	0.126	0.741	<2.00
BKG03@5.0'	1/19/2024	5.0 Ft	9.16	0.458	5.84	<2.00
BKG04@5.0'	1/19/2024	5.0 Ft	8.91	0.0854	0.0909	<2.00
BKG05@5.0'	1/19/2024	5.0 Ft	8.91	0.997	6.33	<2.00
BKG6 6Ft	8/27/2025	6.0 Ft	8.35	0.228	1.52	0.158
BKG7 6Ft	8/27/2025	6.0 Ft	8.08	1.18	2.33	0.775
BKG8 6Ft	8/27/2025	6.0 Ft	7.8	1.35	3.34	0.391
BKG9 6Ft	8/27/2025	6.0 Ft	8.22	7	15.7	2.94
BKG10 6Ft	8/27/2025	6.0 Ft	8.69	0.195	0.923	0.178
Maximum Background Concentration		0.5 Ft	8.77	0.06	0.14	NA
Maximum Background Concentration		3.0 Ft	8.19	0.507	1.98	0.483
Maximum Background Concentration		4.0 Ft	9.48	0.621	4.32	NA
Maximum Background Concentration		5.0 Ft	9.16	0.997	6.33	NA
Maximum Background Concentration		6.0 Ft	8.69	7	15.7	2.94

1. **Bold** faced values exceed the ECMC Table 915-1 limit(s), but are within background concentrations.

2. **Bold** faced values exceed the ECMC Table 915-1 limit(s) and native background concentrations.

3. Brown highlighted soil analytical values indicate a regulatory exceedance.

NA - Not analyzed/Not applicable

TABLE 5
SUMMARY OF METALS IN SOIL CHEMISTRY DATA
NOBLE 100322
FURROW USX AB 15-99HZ, WELD COUNTY, COLORADO
REM # 30076

Sample ID	Sample Date	Depth (ft)	Arsenic (mg/kg)	Barium (mg/kg)	Cadmium (mg/kg)	Chromium (VI) (mg/kg)	Copper (mg/kg)	Lead (mg/kg)	Nickel (mg/kg)	Selenium (mg/kg)	Silver (mg/kg)	Zinc (mg/kg)
ECMC Table 915-1 Limits (Residential SSL)			0.68	15000	71	0.3	3100	400	1500	390	390	23000
ECMC Table 915-1 Limits (Protection of Groundwater SSL)			0.29	82	0.38	0.00067	46	14	26	0.26	0.8	370
99FL02@4.0'	1/12/2024	4.0 Ft	2.34	85.1	<0.200	<0.30	4.63	8.12	3.01	<0.260	0.0395	18.8
PJPN01@4.0'	1/19/2024	4.0 Ft	2.43	27.5	<0.200	<0.30	2.46	4.12	2.79	<0.260	<0.0200	10.2
99FL01@5.0'	1/12/2024	5.0 Ft	2.42	207	<0.200	<0.30	3.63	4.06	2.91	<0.260	<0.0200	10.6
PJPB01@5.0'	1/19/2024	5.0 Ft	2.35	45.2	<0.200	<0.30	2.90	5.45	2.89	<0.260	<0.0200	11.6
99FL03 3Ft	8/27/2025	3.0 Ft	5.09	85.3	<0.262	NA	<31.8	<9.67	<18.0	<0.170	<0.552	<255
99FL04 3Ft	8/27/2025	3.0 Ft	4.75	163	0.293	NA	<32.9	11.6	<18.6	0.458	<0.572	<264
99FL05 3Ft	8/27/2025	3.0 Ft	3.63	127	<0.299	NA	<36.2	<11.0	<20.5	<0.194	<0.630	<292
BKG01@6.0"	1/19/2024	0.5 Ft	1.63	39.4	<0.200	<0.30	2.73	4.97	2.48	<0.260	<0.0200	11.3
BKG02@6.0"	1/19/2024	0.5 Ft	2.52	46.2	0.259	<0.30	4.19	9.08	3.41	<0.260	0.0330	16.5
BKG03@6.0"	1/19/2024	0.5 Ft	1.91	26.6	<0.200	<0.30	3.58	6.43	2.88	<0.260	0.0246	13.6
BKG04@6.0"	1/19/2024	0.5 Ft	3.69	77.4	0.274	<0.30	4.97	8.79	5.66	<0.260	0.0362	19.7
BKG05@6.0"	1/19/2024	0.5 Ft	2.81	51.5	0.233	<0.30	4.40	7.86	4.54	<0.260	0.0406	16.7
BKG6 3Ft	8/27/2025	3.0 Ft	4.39	77.1	<0.261	NA	<31.6	<9.62	<17.9	<0.169	<0.550	<254
BKG7 3Ft	8/27/2025	3.0 Ft	3.95	163	<0.303	NA	<36.7	12.3	<20.7	<0.196	<0.638	<295
BKG8 3Ft	8/27/2025	3.0 Ft	4.68	140	0.356	NA	<35.4	16	<20.0	<0.189	<0.616	<285
BKG9 3Ft	8/27/2025	3.0 Ft	5.36	119	<0.267	NA	<32.4	<9.85	<18.3	<0.173	<0.563	<260
BKG10 3Ft	8/27/2025	3.0 Ft	3.46	80.8	<0.274	NA	<33.2	<10.1	<18.8	<0.178	<0.578	<267
BKG01@4.0'	1/19/2024	4.0 Ft	6.82	90.5	0.573	<0.30	9.49	16.5	6.38	0.471	0.0852	24.5
BKG02@4.0'	1/19/2024	4.0 Ft	3.60	54.7	0.262	<0.30	6.59	10.5	6.15	<0.260	0.0436	27.7
BKG03@4.0'	1/19/2024	4.0 Ft	6.21	101	0.409	<0.30	9.31	15.2	6.92	0.388	0.0451	31.5
BKG04@4.0'	1/19/2024	4.0 Ft	2.81	63.1	<0.200	<0.30	3.47	4.94	3.44	<0.260	0.0246	12.1
BKG05@4.0'	1/19/2024	4.0 Ft	3.17	48.4	<0.200	<0.30	3.68	5.30	3.77	<0.260	<0.0200	12.9
BKG01@5.0'	1/19/2024	5.0 Ft	5.36	108	0.749	<0.30	6.29	16.0	7.79	0.555	0.103	19.2
BKG02@5.0'	1/19/2024	5.0 Ft	3.53	58.0	0.274	<0.30	6.05	9.80	4.04	<0.260	0.0423	21.0
BKG03@5.0'	1/19/2024	5.0 Ft	2.25	86.8	0.287	<0.30	11.4	13.7	4.76	<0.260	0.0586	20.7
BKG04@5.0'	1/19/2024	5.0 Ft	2.19	174	<0.200	<0.30	2.72	4.45	3.00	<0.260	<0.0200	11.5
BKG05@5.0'	1/19/2024	5.0 Ft	3.24	65.4	0.202	<0.30	3.63	5.51	3.80	0.328	0.0265	13.4
99BKG06@5.0'	1/12/2024	5.0 Ft	2.5	38.6	<2.00	<0.30	2.75	4.89	3.18	<0.260	<0.0200	12.2
BKG6 6Ft	8/27/2025	6.0 Ft	4.51	85.3	<0.285	NA	<34.5	11.8	<19.5	<0.185	<0.600	<278
BKG7 6Ft	8/27/2025	6.0 Ft	5.23	96	0.328	NA	<36.1	18	<20.4	<0.193	<0.628	<290
BKG8 6Ft	8/27/2025	6.0 Ft	4.27	<61.7	<0.286	NA	<34.6	11.2	<19.6	0.227	<0.602	<278
BKG9 6Ft	8/27/2025	6.0 Ft	3.91	68.2	<0.293	NA	<35.5	15.5	<20.1	0.437	<0.617	<285
BKG10 6Ft	8/27/2025	6.0 Ft	2.81	<59.4	<0.275	NA	<33.3	<10.1	<18.8	<0.178	<0.579	<268
1.25x Maximum Background Concentration		0.5 Ft	4.61	96.75	0.34	NA	6.21	11.35	7.08	NA	0.05	24.63
1.25x Maximum Background Concentration		3.0 Ft	6.70	203.75	0.45	NA	NA	20.00	NA	NA	NA	NA
1.25x Maximum Background Concentration		4.0 Ft	8.53	126	0.716	<0.30	11.9	20.6	8.65	0.589	0.107	39.4
1.25x Maximum Background Concentration		5.0 Ft	6.70	218	0.936	<0.30	14.3	20.0	9.74	0.694	0.129	26.3
1.25x Maximum Background Concentration		6.0 Ft	6.54	120.00	0.41	NA	NA	22.50	NA	0.55	NA	NA

1. **Bold** faced values exceed the ECMC Table 915-1 limit(s), but are within 1.25x background concentrations.
2. **Red** faced values exceed the ECMC Table 915-1 limit(s) and native background concentrations.
3. Red & blue highlighted soil analytical values indicate an exceedance of the referenced soil screening level (SSL).
4. Non-detect background results accounted for in the highest background concentration by using the reporting limit.
ECMC = Energy & Carbon Management Commission
(<) = Analytical result is less than the indicated laboratory reporting limit.
mg/kg = Milligrams per kilogram
ft. = Feet
bgs = Below ground surface
* Indicates laboratory minimum detection limit in excess of SSL
NA = Not analyzed/Not applicable