

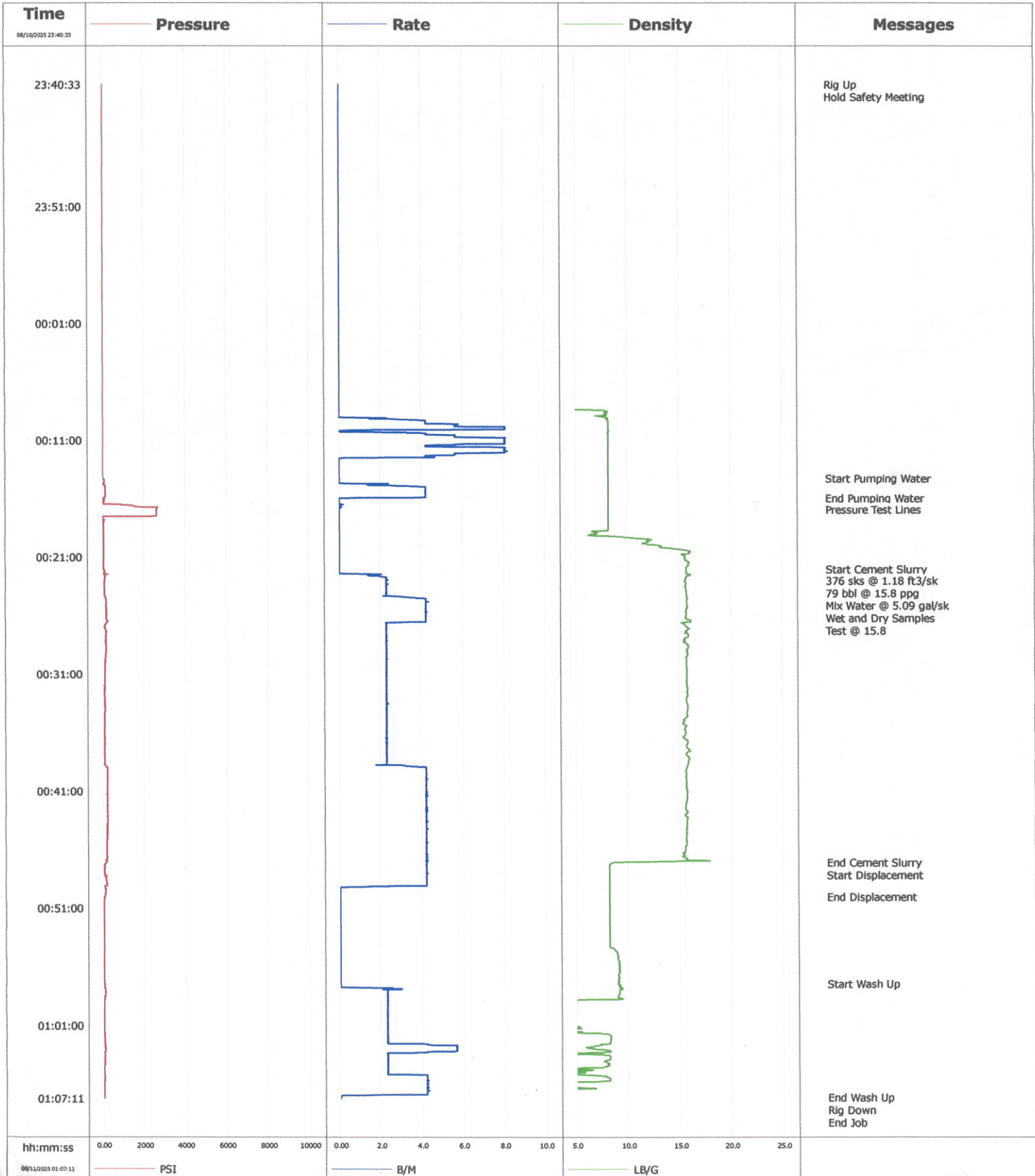
				Customer Oxy			Job Number 1063462.11.18								
Well HSR Lost Creek State 13-20			Location (legal)			Schlumberger Location			Job Start Aug/10/2025						
Field DJ		Formation Name/Type			Deviation deg		Bit Size in		Well MD ft		Well TVD ft				
County Weld		State/Province Colorado			BHP psi		BHST degF		BHCT degF		Pore Press. Gradient lb/gal				
Well Master 0067462438		API/UWI 05-123-19588													
Rig Name Ensign 122		Drilled For Oil		Service Via Land		Casing/Liner									
						Depth, ft		Size, in		Weight, lb/ft		Grade	Thread		
Offshore Zone		Well Class Old		Well Type Re-entry											
Drilling Fluid Type		Max. Density lb/gal		Plastic Viscosity cP		Tubing/Drill Pipe									
						T/D		Depth, ft		Size, in		Weight, lb/ft	Grade	Thread	
Service Line Cementing		Job Type Plug					D		2003.0		4.5		16.6	N/A	N/A
									0.0		0.0				
Max. Allowed Tub. Press psi		Max. Allowed Ann. Press psi		WH Connection 4 1/2" IF DP pin		Perforations/Open Hole									
						Top, ft		Bottom, ft		shot/ft		No. of Shots	Total Interval ft		
						ft		ft							
						ft		ft					Diameter in		
						Treat Down Drill Pipe		Displacement 13.5 bbl		Packer Type		Packer Depth ft			
						Tubing Vol. bbl		Casing Vol. bbl		Annular Vol. bbl		Openhole Vol. bbl			
Casing/Tubing Secured <input checked="" type="checkbox"/>		1 Hole Vol. Circulated prior to Cement <input checked="" type="checkbox"/>		Casing Tools				Squeeze Job							
Lift Pressure psi		Shoe Type		Shoe Depth ft				Squeeze Type							
Pipe Rotated <input type="checkbox"/>		Pipe Reciprocated <input type="checkbox"/>		Stage Tool Type				Tool Depth ft							
No. Centralizers		Top Plugs		Bottom Plugs		Stage Tool Depth ft		Tail Pipe Size in							
Cement Head Type		Collar Type		Collar Depth ft				Tail Pipe Depth ft							
Job Scheduled For Aug/10/2025		Arrived on Location Aug/10/2025		Leave Location Aug/10/2025		Collar Depth ft		Sqz. Total Vol. bbl							
Date	Time 24-hr clock	Treating Pressure PSI	Flow Rate B/M	Density LB/G	Volume BBL	Message									
08/10/2025	23:40:33	17	0.0	-0.00	0.0	Started Acquisition									
08/11/2025	00:14:15	17	0.0	8.22	19.4	Start Pumping Water									
08/11/2025	00:15:57	54	1.0	8.22	24.1	End Pumping Water									
08/11/2025	00:16:54	2631	0.0	8.22	24.1	Pressure Test Lines									
08/11/2025	00:22:02	59	0.0	15.69	24.1	Start Cement Slurry									
08/11/2025	00:23:00	104	2.3	15.57	25.3	376 sks @ 1.18 ft3/sk									
08/11/2025	00:47:04	173	4.2	9.21	100.4	End Cement Slurry									
08/11/2025	00:47:06	168	4.2	8.63	100.5	Start Displacement									
08/11/2025	00:50:02	72	0.0	8.21	109.0	End Displacement									
08/11/2025	00:57:25	27	0.0	9.04	109.0	Start Wash Up									

Well HSR Lost Creek State 13-20	Field DJ	Job Start Aug/10/2025	Customer Oxy	Job Number 1063462.11.18
---	--------------------	---------------------------------	------------------------	------------------------------------

Post Job Summary

Average Pump Rates, bbl/min					Volume of Fluid Injected, bbl			
Slurry 3.3	N2	Mud	Maximum Rate 8.2	Total Slurry 79.0	Mud 0.0	Spacer 5.0	N2	
Treating Pressure Summary, psi					Breakdown Fluid			
Maximum 2672	Final 0	Average 111	Bump Plug to	Breakdown	Type	Volume bbl	Density lb/gal	
Avg. N2 Percent %	Designed Slurry Volume 79.5 bbl	Displacement 13.5 bbl	Mix Water Temp 71 degF	Cement Circulated to Surface? <input type="checkbox"/>	Volume bbl			
				Washed Thru Perfs <input type="checkbox"/>	To ft			
Customer or Authorized Representative Dale James			Schlumberger Supervisor Matt Leiker		Circulation Lost <input type="checkbox"/>	Job Completed <input checked="" type="checkbox"/>		
					-	-		

Well	HSR Lost Creek State 13-20	Client	Oxy
Field	DJ	SIR No.	1063462.11.18
Engineer	Matt Leiker	Job Type	Plug
Country	United States	Job Date	08-10-2025



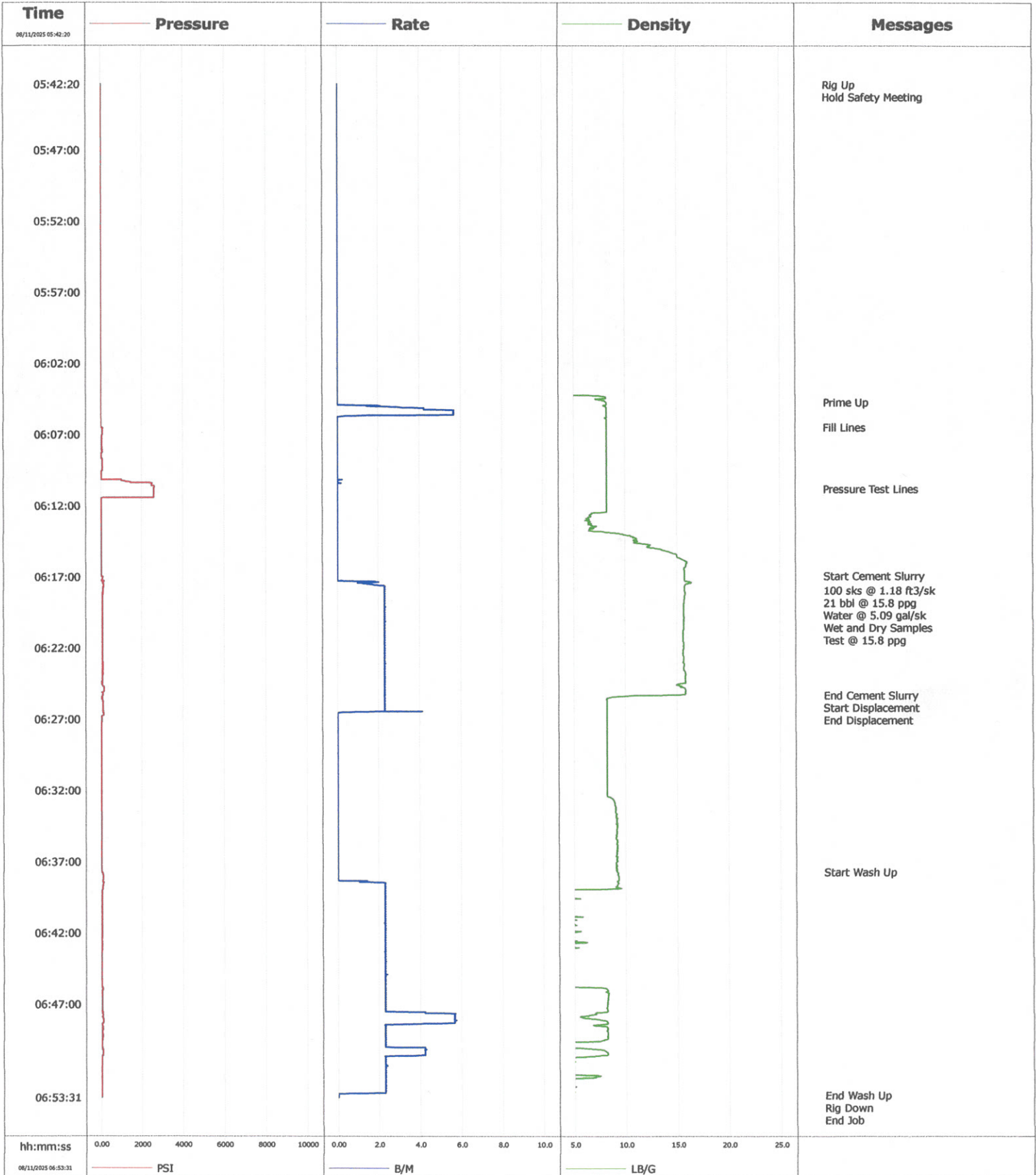
				Customer Oxy			Job Number 1063462.11.18								
Well HSR LOST CREEK STATE 13-20			Location (legal)			Schlumberger Location			Job Start Aug/11/2025						
Field DJ		Formation Name/Type			Deviation deg		Bit Size in		Well MD ft		Well TVD ft				
County Weld		State/Province Colorado			BHP psi		BHST degF		BHCT degF		Pore Press. Gradient lb/gal				
Well Master 0067462438		API/UWI 05-123-19588													
Rig Name Ensign 122		Drilled For Oil		Service Via Land		Casing/Liner									
						Depth, ft		Size, in		Weight, lb/ft		Grade	Thread		
Offshore Zone		Well Class Old		Well Type Re-entry											
Drilling Fluid Type		Max. Density lb/gal		Plastic Viscosity cP		Tubing/Drill Pipe									
						T/D		Depth, ft		Size, in		Weight, lb/ft		Grade	Thread
Service Line Cementing		Job Type Plug				D		858.0		4.5		16.6		N/A	N/A
								0.0		0.0		0.0			
Max. Allowed Tub. Press psi		Max. Allowed Ann. Press psi		WH Connection 4 1/2" IF DP pin		Perforations/Open Hole									
						Top, ft		Bottom, ft		shot/ft		No. of Shots		Total Interval ft	
						ft		ft							
						ft		ft						Diameter in	
						Treat Down Drill Pipe		Displacement 7.7 bbl		Packer Type		Packer Depth ft			
						Tubing Vol. bbl		Casing Vol. bbl		Annular Vol. bbl		Openhole Vol. bbl			
Casing/Tubing Secured <input checked="" type="checkbox"/>		1 Hole Vol. Circulated prior to Cement <input checked="" type="checkbox"/>				Casing Tools			Squeeze Job						
Lift Pressure psi						Shoe Type			Squeeze Type						
Pipe Rotated <input type="checkbox"/>		Pipe Reciprocated <input type="checkbox"/>				Shoe Depth ft			Tool Type						
No. Centralizers		Top Plugs		Bottom Plugs		Stage Tool Type			Tool Depth ft						
Cement Head Type						Stage Tool Depth ft			Tail Pipe Size in						
Job Scheduled For Aug/11/2025		Arrived on Location Aug/11/2025		Leave Location Aug/11/2025		Collar Type			Tail Pipe Depth ft						
						Collar Depth ft			Sqz. Total Vol. bbl						
Date	Time 24-hr clock	Treating Pressure PSI	Flow Rate B/M	Density LB/G	Volume BBL	Message									
08/11/2025	05:42:20	22	0.0	-0.00	0.0	Started Acquisition									
08/11/2025	06:04:41	22	0.0	8.17	0.0	Prime Up									
08/11/2025	06:06:26	22	0.0	8.22	3.2	Fill Lines									
08/11/2025	06:10:47	2581	0.0	8.22	3.3	Pressure Test Lines									
08/11/2025	06:16:54	45	0.0	15.76	3.3	Start Cement Slurry									
08/11/2025	06:17:55	118	2.3	15.75	4.4	100 sks @ 1.18 ft ³ /sk									
08/11/2025	06:17:56	114	2.3	15.76	4.5	Test @ 15.8 ppg									
08/11/2025	06:25:16	114	2.3	15.23	21.3	End Cement Slurry									
08/11/2025	06:25:17	114	2.3	14.33	21.3	Start Displacement									
08/11/2025	06:26:49	54	0.0	8.22	24.0	End Displacement									
08/11/2025	06:37:42	36	0.0	9.18	24.0	Start Wash Up									
08/11/2025	06:53:22	40	0.0	0.10	61.9	End Wash Up									

Well HSR LOST CREEK STATE 13-20	Field DJ	Job Start Aug/11/2025	Customer Oxy	Job Number 1063462.11.18
---	--------------------	---------------------------------	------------------------	------------------------------------

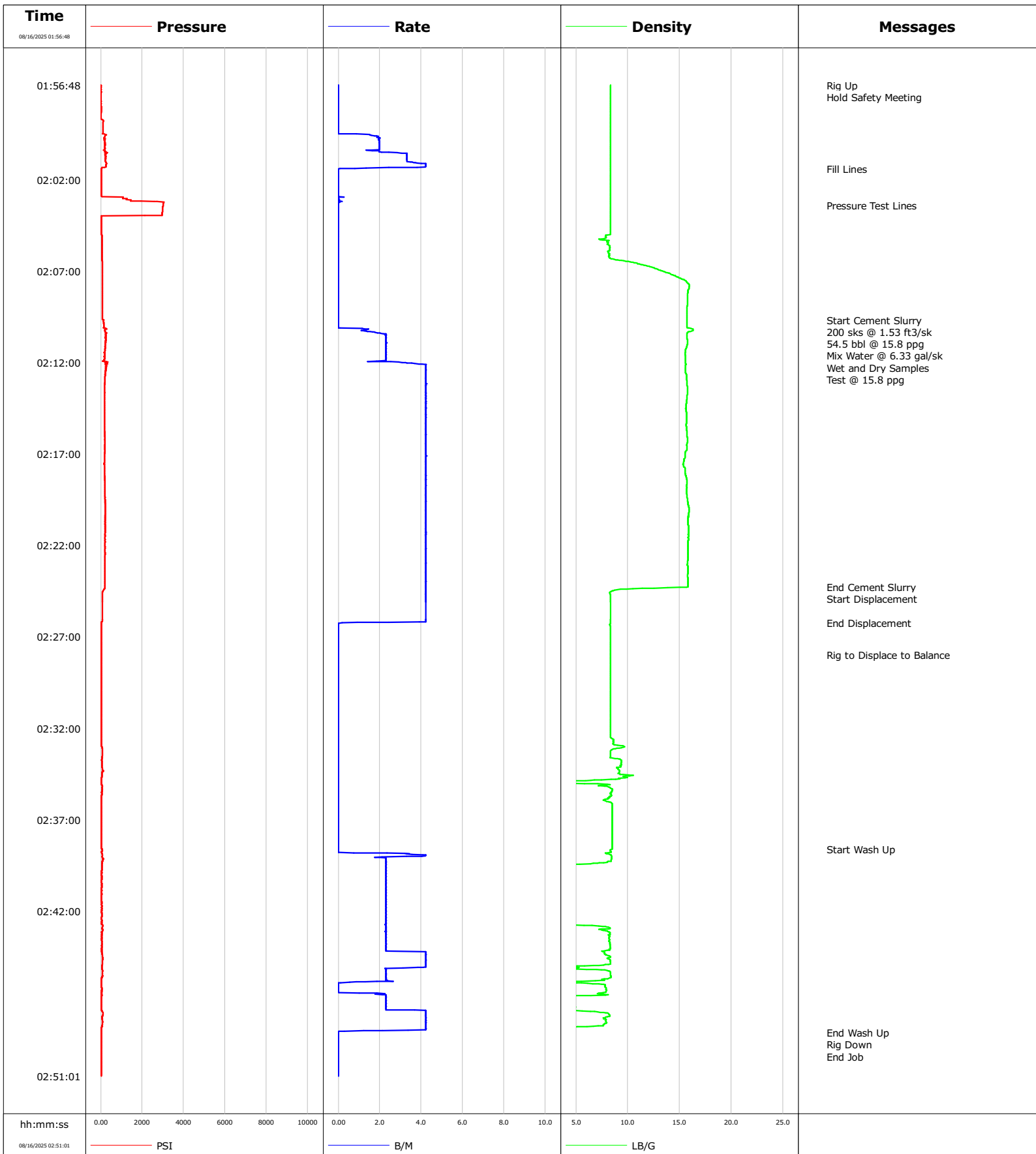
Post Job Summary

Average Pump Rates, bbl/min				Volume of Fluid Injected, bbl			
Slurry 2.5	N2	Mud	Maximum Rate 5.7	Total Slurry 21.0	Mud 0.0	Spacer 5.0	N2
Treating Pressure Summary, psi				Breakdown Fluid			
Maximum 2590	Final 0	Average 87	Bump Plug to	Breakdown	Type	Volume bbl	Density lb/gal
Avg. N2 Percent %	Designed Slurry Volume 21.0 bbl		Displacement 7.7 bbl	Mix Water Temp 70 degF	Cement Circulated to Surface? <input type="checkbox"/>	Volume bbl	
					Washed Thru Perfs <input type="checkbox"/>	To ft	
Customer or Authorized Representative Isaac Rulla			Schlumberger Supervisor Matt Leiker		Circulation Lost <input type="checkbox"/>	Job Completed <input checked="" type="checkbox"/>	
					-	-	

Well	HSR LOST CREEK STATE 13-20	Client	Oxy
Field	DJ	SIR No.	1063462.11.18
Engineer	Matt Leiker	Job Type	Plug
Country	United States	Job Date	08-11-2025



Well	HSR Lost Creek State 13-20	Client	Oxy
Field	DJ	SIR No.	1063462.11.12
Engineer	Matt Leiker	Job Type	Plug
Country	United States	Job Date	08-15-2025



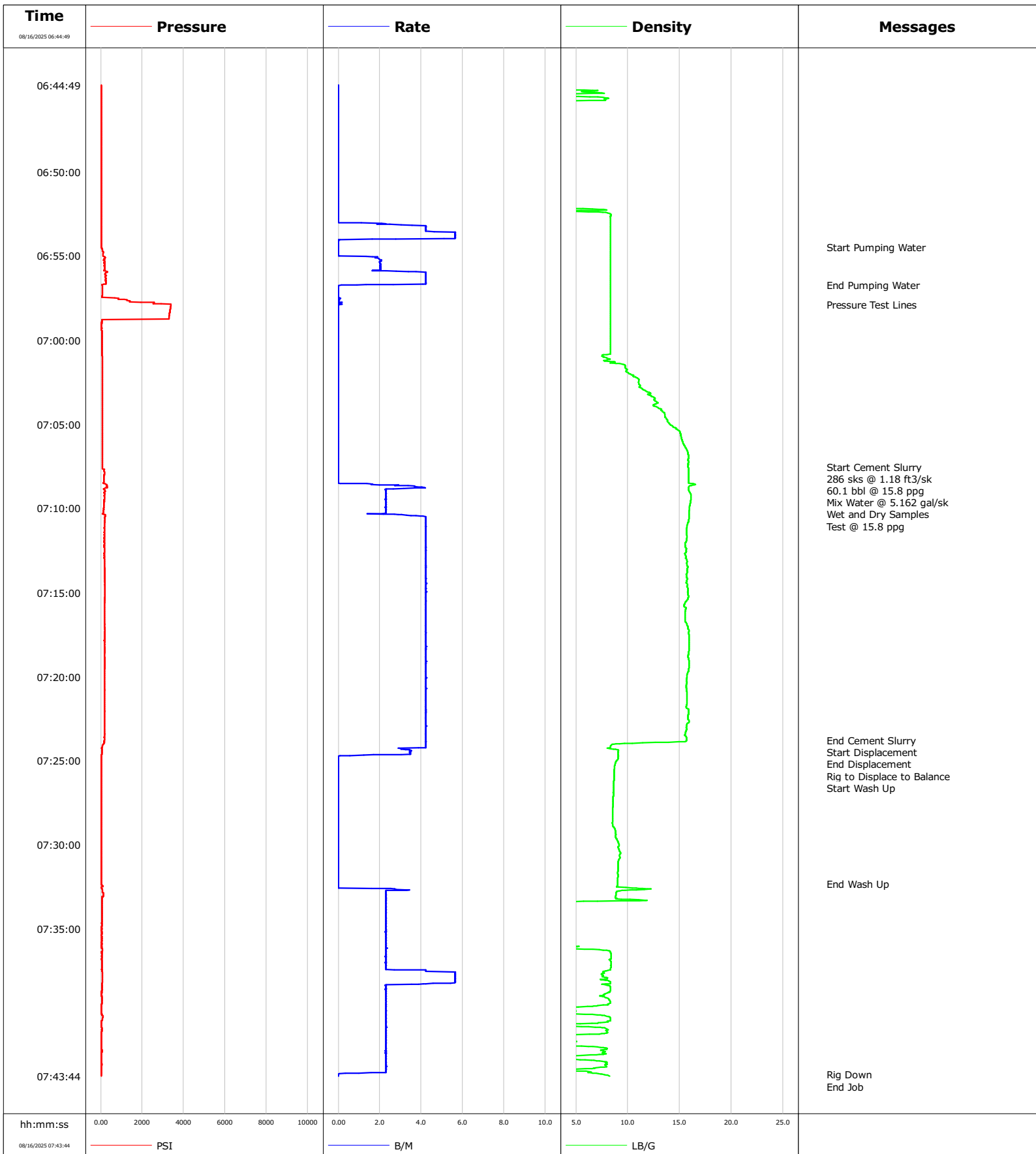
				Customer			Job Number		
				Oxy			1063462.11.12		
Well		Location (legal)		Schlumberger Location			Job Start		
HSR Lost Creek State 13-20							Aug/15/2025		
Field		Formation Name/Type		Deviation	Bit Size	Well MD	Well TVD		
DJ				deg	in	ft	ft		
County		State/Province		BHP	BHST	BHCT	Pore Press. Gradient		
Weld		Colorado		psi	210 degF	210 degF	lb/gal		
Well Master		API/UWI							
67462438		05-123-19588							
Rig Name	Drilled For	Service Via	Casing/Liner						
Ensign 122	Oil	Land	Depth, ft		Size, in	Weight, lb/ft	Grade	Thread	
Offshore Zone	Well Class	Well Type							
	Old	Workover							
Drilling Fluid Type		Max. Density	Plastic Viscosity	Tubing/Drill Pipe					
		lb/gal	cP	T/D	Depth, ft	Size, in	Weight, lb/ft	Grade	Thread
Service Line	Job Type								
Cementing	Plug	D	6320.0	4.5	16.6	N/A	N/A		
		0.0	0.0	0.0					
Max. Allowed Tub. Press	Max. Allowed Ann. Press	WH Connection	Perforations/Open Hole						
psi	psi	4 1/2" IF DP pin	Top, ft	Bottom, ft	shot/ft	No. of Shots	Total Interval		
Service Instructions	Pressure Test : 3000 psi	Estimated BOC = 6320'	ft	ft			ft		
	Estimated TOC = 5717'	Cement Type Density = Niobrara @ 15.8 ppg	ft	ft			Diameter		
	Volume = 54.5 bbl ; Sacks = 200	Yield = 1.53 ft ³ /sk ; GPS = 6.329	ft	ft			in		
	Water: Temp 70 ; Cl <500 ; pH 7	D907 (G Cement) = 94 lbs/sk BWOB /// D066 (Silica) = 35% BWOB	Treat Down	Displacement	Packer Type	Packer Depth			
	D800 (Retarder) = .23% BWOB /// D065 (Dispersant) = .2% BWOB	D167A (ScavengerPlus) = .4% BWOB /// B547 (GASBLOK) = .4% BWOB	Drill Pipe	79.4 bbl		ft			
			Tubing Vol.	Casing Vol.	Annular Vol.	Openhole Vol.			
			bbl	bbl	bbl	bbl			
Casing/Tubing Secured	<input checked="" type="checkbox"/>	1 Hole Vol. Circulated prior to Cement	<input checked="" type="checkbox"/>	Casing Tools			Squeeze Job		
Lift Pressure	psi	Shoe Type	Shoe Depth	ft	Tool Type				
Pipe Rotated	<input type="checkbox"/>	Pipe Reciprocated	<input type="checkbox"/>						
No. Centralizers	Top Plugs	Bottom Plugs	Stage Tool Type	Tool Depth	ft				
Cement Head Type	Stage Tool Depth	ft	Tail Pipe Size	in					
Job Scheduled For	Arrived on Location	Leave Location	Collar Type	Tail Pipe Depth	ft				
Aug/15/2025	Aug/15/2025	Aug/15/2025	Collar Depth	ft	Sqz. Total Vol.	bbl			
Date	Time 24-hr clock	Treating Pressure PSI	Flow Rate B/M	Density LB/G	Volume BBL	Message			
08/16/2025	01:56:48	22	0.0	8.37	0.0	Started Acquisition			
08/16/2025	02:01:22	45	0.8	8.35	4.9	Fill Lines			
08/16/2025	02:03:24	3007	0.0	8.36	5.0	Pressure Test Lines			
08/16/2025	02:09:40	141	0.0	15.75	5.0	Start Cement Slurry			
08/16/2025	02:10:00	159	0.0	15.75	5.0	200 sks @ 1.53 ft ³ /sk			
08/16/2025	02:24:16	200	4.2	15.84	60.8	End Cement Slurry			
08/16/2025	02:24:22	178	4.2	10.50	61.3	Start Displacement			
08/16/2025	02:26:14	31	0.2	8.35	69.0	End Displacement			
08/16/2025	02:28:00	36	0.0	8.35	69.0	Rig to Displace to Balance			
08/16/2025	02:38:36	77	0.0	8.51	69.0	Start Wash Up			
08/16/2025	02:48:39	36	0.0	0.18	94.1	End Wash Up			

Well HSR Lost Creek State 13-20	Field DJ	Job Start Aug/15/2025	Customer Oxy	Job Number 1063462.11.12
---	--------------------	---------------------------------	------------------------	------------------------------------

Post Job Summary

Average Pump Rates, bbl/min				Volume of Fluid Injected, bbl			
Slurry 3.4	N2	Mud	Maximum Rate 4.3	Total Slurry 54.5	Mud 0.0	Spacer 5.0	N2
Treating Pressure Summary, psi				Breakdown Fluid			
Maximum 3052	Final 31	Average 146	Bump Plug to	Breakdown	Type	Volume bbl	Density lb/gal
Avg. N2 Percent %	Designed Slurry Volume 54.5 bbl	Displacement 79.4 bbl	Mix Water Temp 70 degF	Cement Circulated to Surface? <input type="checkbox"/>	Volume bbl		
				Washed Thru Perfs <input type="checkbox"/>	To ft		
Customer or Authorized Representative Dale James		Schlumberger Supervisor Matt Leiker			Circulation Lost <input type="checkbox"/>	Job Completed <input checked="" type="checkbox"/>	
					-	-	

Well	HSR Lost Creek State 13-20	Client	Oxy
Field	DJ	SIR No.	1063462.11.12 S
Engineer	Matt Leiker	Job Type	Plug
Country	United States	Job Date	08-16-2025



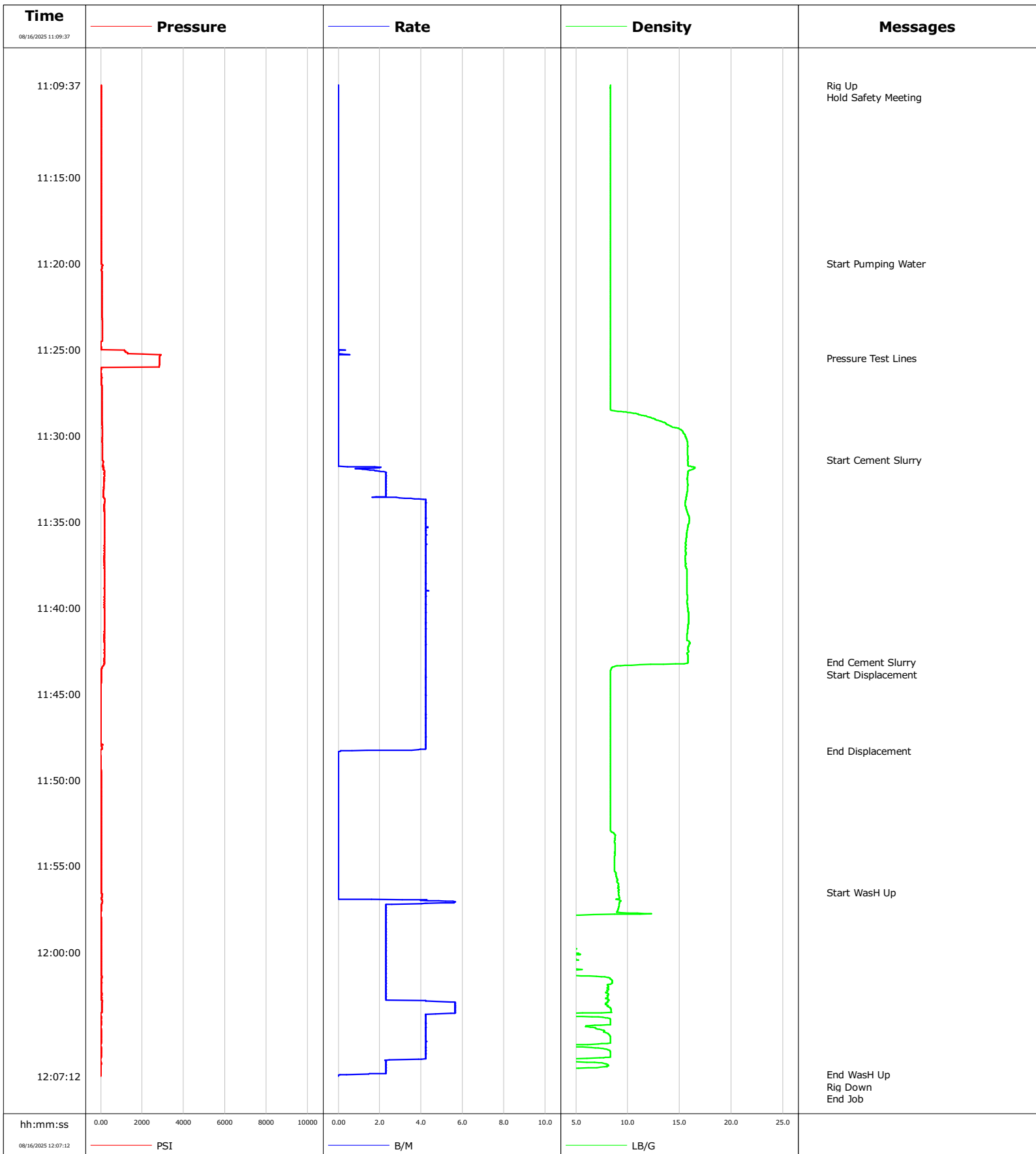
				Customer			Job Number			
				Oxy			1063462.11.12 S			
Well		Location (legal)			Schlumberger Location			Job Start		
HSR Lost Creek State 13-20								Aug/16/2025		
Field	Formation Name/Type			Deviation	Bit Size	Well MD	Well TVD			
DJ				deg	in	ft	ft			
County	State/Province	BHP		BHST	BHCT	Pore Press. Gradient				
Weld	Colorado	psi		degF	degF	lb/gal				
Well Master	API/UWI	Service Via		Casing/Liner						
67462438	05-123-19588	Land		Depth, ft	Size, in	Weight, lb/ft	Grade			
Rig Name	Drilled For	Well Type		Thread						
Ensign 122	Oil	Workover								
Offshore Zone	Well Class	Well Type								
	Old									
Drilling Fluid Type	Max. Density	Plastic Viscosity		Tubing/Drill Pipe						
	lb/gal	cP		T/D	Depth, ft	Size, in	Weight, lb/ft			
							Grade			
Service Line	Job Type						Thread			
Cementing	Plug			D	4407.0	4.5	16.6			
					0.0	0.0	N/A			
Max. Allowed Tub. Press	Max. Allowed Ann. Press	WH Connection		Perforations/Open Hole						
psi	psi	4 1/2" XH DP pin		Top, ft	Bottom, ft	shot/ft	No. of Shots			
Service Instructions Pressure Test : 3000 psi Estimated BOC = 4407' ; Estimated TOC = 3908' Cement Type Density = Sussex AGM @ 15.8 ppg Volume = 60.1 bbl ; Sacks = 286 sks Yield = 1.18 ft3/sk ; GPS = 5.162 Water : Temp 70 ; Cl <500 ; pH 7 D907 (G Cement) = 94 lbs/sk WBWOB /// B547 (GASBLOK) = .40% BWOB D053 (Gypsum) = 2% BWOB /// D167A (Fluid Loss) = .25% BWOB D065 (Dispersant) = .40% BWOB								Total Interval		
										Diameter
										in
				Treat Down	Displacement	Packer Type	Packer Depth			
				Drill Pipe	53.6 bbl		ft			
				Tubing Vol.	Casing Vol.	Annular Vol.	Openhole Vol.			
				bbl	bbl	bbl	bbl			
Casing/Tubing Secured	<input checked="" type="checkbox"/>	1 Hole Vol. Circulated prior to Cement	<input checked="" type="checkbox"/>	Casing Tools			Squeeze Job			
Lift Pressure	psi	Shoe Type		Squeeze Type						
Pipe Rotated	<input type="checkbox"/>	Pipe Reciprocated	<input type="checkbox"/>	Shoe Depth			ft			
No. Centralizers	Top Plugs	Bottom Plugs		Stage Tool Type			Tool Depth			
							ft			
Cement Head Type				Stage Tool Depth			ft			
							Tail Pipe Size			
							in			
Job Scheduled For	Arrived on Location	Leave Location		Collar Type			Tail Pipe Depth			
Aug/16/2025	Aug/16/2025	Aug/16/2025					ft			
				Collar Depth			ft			
							Sqz. Total Vol.			
							bbl			
Date	Time 24-hr clock	Treating Pressure PSI	Flow Rate B/M	Density LB/G	Volume BBL	Message				
08/16/2025	06:44:49	31	0.0	0.01	0.0	Started Acquisition				
08/16/2025	06:54:28	36	0.0	8.37	4.4	Start Pumping Water				
08/16/2025	06:56:43	59	0.9	8.36	9.5	End Pumping Water				
08/16/2025	06:57:53	3396	0.0	8.36	9.5	Pressure Test Lines				
08/16/2025	07:07:32	91	0.0	15.85	9.5	Start Cement Slurry				
08/16/2025	07:08:00	168	0.0	15.87	9.5	286 sks @ 1.18 ft3/sk				
08/16/2025	07:23:48	168	4.2	15.69	70.6	End Cement Slurry				
08/16/2025	07:23:49	164	4.2	15.68	70.6	Start Displacement				
08/16/2025	07:24:02	114	4.2	8.52	71.5	End Displacement				
08/16/2025	07:24:41	31	0.6	9.09	73.8	Start Wash Up				
08/16/2025	07:32:19	36	0.0	9.02	73.8	End Wash Up				

Well HSR Lost Creek State 13-20	Field DJ	Job Start Aug/16/2025	Customer Oxy	Job Number 1063462.11.12 S
---	--------------------	---------------------------------	------------------------	--------------------------------------

Post Job Summary

Average Pump Rates, bbl/min					Volume of Fluid Injected, bbl			
Slurry 3.4	N2	Mud	Maximum Rate 5.7	Total Slurry 60.1	Mud 0.0	Spacer 5.0	N2	
Treating Pressure Summary, psi					Breakdown Fluid			
Maximum 3400	Final 31	Average 153	Bump Plug to	Breakdown	Type	Volume bbl	Density lb/gal	
Avg. N2 Percent %	Designed Slurry Volume 60.1 bbl	Displacement 3.6 bbl	Mix Water Temp 70 degF	Cement Circulated to Surface? <input type="checkbox"/>	Volume bbl			
				Washed Thru Perfs <input type="checkbox"/>	To ft			
Customer or Authorized Representative Isaac Rulla			Schlumberger Supervisor Matt Leiker		Circulation Lost <input type="checkbox"/>	Job Completed <input checked="" type="checkbox"/>		
					-	-		

Well	HSR Lost Creek State 13-20	Client	Oxy
Field	DJ	SIR No.	1063462.11.12 L
Engineer	Matt Leiker	Job Type	Plug
Country	United States	Job Date	08-16-2025



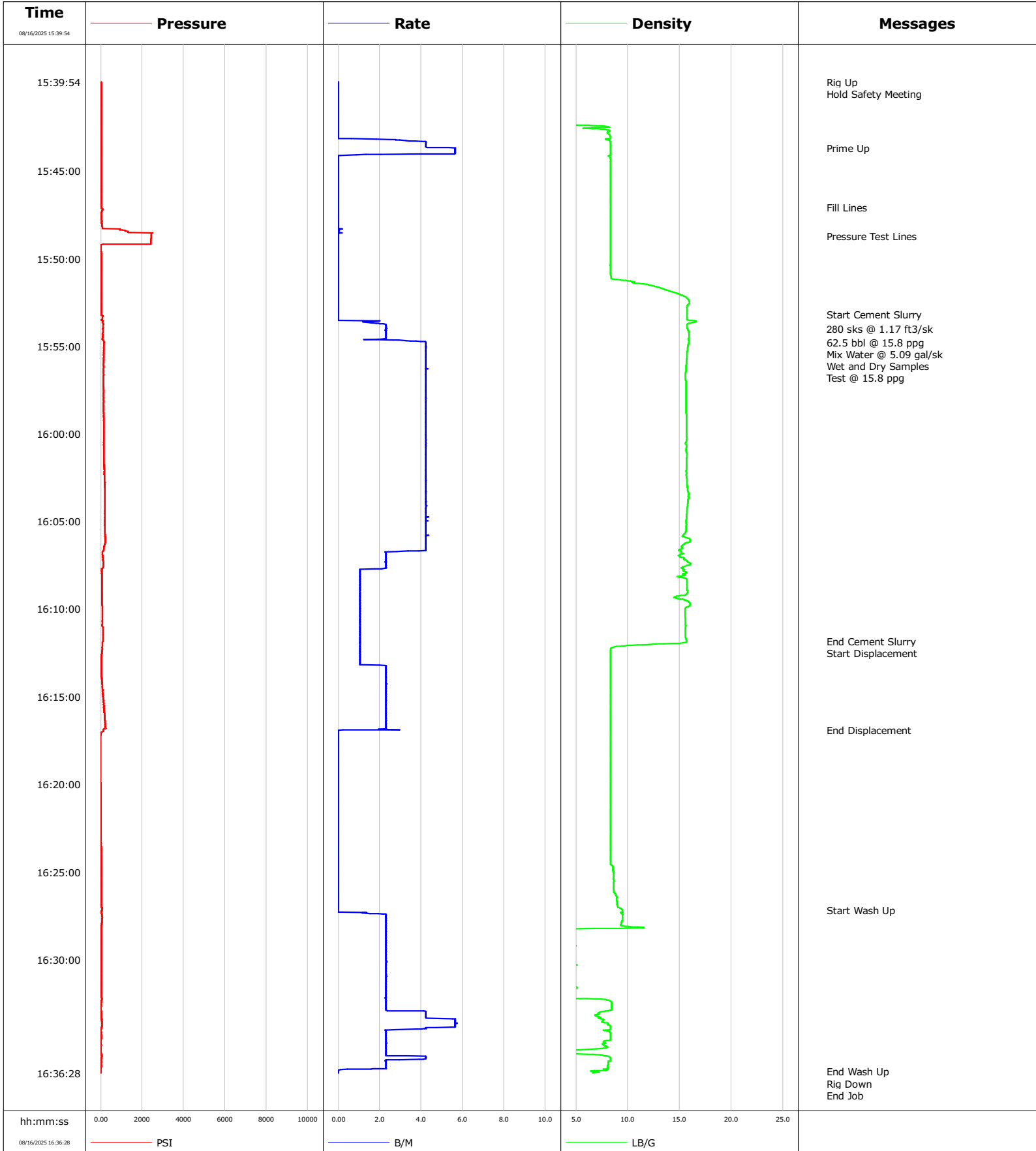
				Customer			Job Number			
				Oxy			1063462.11.12 L			
Well		Location (legal)			Schlumberger Location			Job Start		
HSR Lost Creek State 13-20								Aug/16/2025		
Field		Formation Name/Type		Deviation	Bit Size		Well MD	Well TVD		
DJ				deg	in		ft	ft		
County		State/Province		BHP	BHST		BHCT	Pore Press. Gradient		
Weld		Colorado		psi	degF		degF	lb/gal		
Well Master		API/UWI								
67462438		05-123-19588								
Rig Name		Drilled For	Service Via		Casing/Liner					
Ensign 122		Oil	Land							
					Depth, ft	Size, in	Weight, lb/ft	Grade		
						0.0				
Offshore Zone		Well Class	Well Type							
		Old	Workover							
Drilling Fluid Type		Max. Density	Plastic Viscosity		Tubing/Drill Pipe					
		lb/gal	cP							
					T/D	Depth, ft	Size, in	Weight, lb/ft		
						2314.0	4.5	16.6		
						0.0	0.0	0.0		
Service Line		Job Type		Perforations/Open Hole						
Cementing		Plug								
Max. Allowed Tub. Press		Max. Allowed Ann. Press	WH Connection		Top, ft	Bottom, ft	shot/ft	No. of Shots		
psi		psi	4 1/2" IF DP pin		ft	ft		Total Interval		
								ft		
								Diameter		
								in		
Service Instructions					Treat Down	Displacement	Packer Type	Packer Depth		
Lower AGM					Drill Pipe	24.0 bbl		ft		
Pressure Test: 2500 psi					Tubing Vol.	Casing Vol.	Annular Vol.	Openhole Vol.		
Estimated BOC = 2314' ; Estimated TOC = 1793'					bbl	bbl	bbl	bbl		
Cement Type Density = Lower AGM @ 15.8 ppg										
Volume = 44 bbl ; Sacks = 211 sks										
Yield = 1.17 ft ³ /sk ; GPS = 5.1										
Water: Temp 70 ; Cl <500 ; pH 7										
D907 (G Cement) = 94 lbs/sk BWOB /// B547 (GASBLOK) = .1% BWOB /// D065										
(Dispersant) = .1% BWOB ///										
Casing/Tubing Secured <input checked="" type="checkbox"/>		1 Hole Vol. Circulated prior to Cement <input checked="" type="checkbox"/>			Casing Tools			Squeeze Job		
Lift Pressure		psi		Shoe Type			Squeeze Type			
Pipe Rotated <input type="checkbox"/>		Pipe Reciprocated <input type="checkbox"/>		Shoe Depth			Tool Type			
				ft						
No. Centralizers		Top Plugs	Bottom Plugs		Stage Tool Type			Tool Depth		
								ft		
Cement Head Type					Stage Tool Depth			Tail Pipe Size		
					ft			in		
Job Scheduled For		Arrived on Location		Leave Location		Collar Type			Tail Pipe Depth	
Aug/16/2025		Aug/16/2025		Aug/16/2025					ft	
						Collar Depth			Sqz. Total Vol.	
						ft			bbl	
Date	Time 24-hr clock	Treating Pressure PSI	Flow Rate B/M	Density LB/G	Volume BBL	Message				
08/16/2025	11:09:37	45	0.0	8.37	0.0	Started Acquisition				
08/16/2025	11:09:38	45	0.0	8.37	0.0	Hold Safety Meeting				
08/16/2025	11:19:59	40	0.0	8.35	0.0	Start Pumping Water				
08/16/2025	11:25:29	2851	0.0	8.35	0.0	Pressure Test Lines				
08/16/2025	11:31:24	72	0.0	15.81	0.0	Start Cement Slurry				
08/16/2025	11:43:10	173	4.2	15.84	44.3	End Cement Slurry				
08/16/2025	11:43:12	173	4.2	15.83	44.4	Start Displacement				
08/16/2025	11:48:18	-24	0.7	8.35	65.9	End Displacement				
08/16/2025	11:56:33	45	0.0	9.15	65.9	Start Wash Up				
08/16/2025	12:07:07	17	0.4	4.03	97.4	End Wash Up				

Well HSR Lost Creek State 13-20	Field DJ	Job Start Aug/16/2025	Customer Oxy	Job Number 1063462.11.12 L
---	--------------------	---------------------------------	------------------------	--------------------------------------

Post Job Summary

Average Pump Rates, bbl/min				Volume of Fluid Injected, bbl			
Slurry 3.6	N2	Mud	Maximum Rate 5.7	Total Slurry 44.0	Mud 0.0	Spacer 5.0	N2
Treating Pressure Summary, psi				Breakdown Fluid			
Maximum 2924	Final 0	Average 112	Bump Plug to	Breakdown	Type	Volume bbl	Density lb/gal
Avg. N2 Percent %	Designed Slurry Volume 44.0 bbl	Displacement 24.0 bbl	Mix Water Temp 70 degF	Cement Circulated to Surface? <input type="checkbox"/>	Volume bbl		
				Washed Thru Perfs <input type="checkbox"/>	To ft		
Customer or Authorized Representative Isaac Rulla		Schlumberger Supervisor Matt Leiker			Circulation Lost <input type="checkbox"/>	Job Completed <input checked="" type="checkbox"/>	
					-	-	

Well	HSR Lost Creek State 13-20	Client	Oxy
Field	DJ	SIR No.	1063462.11.12 U
Engineer	Matt Leiker	Job Type	Plug
Country	United States	Job Date	08-16-2025



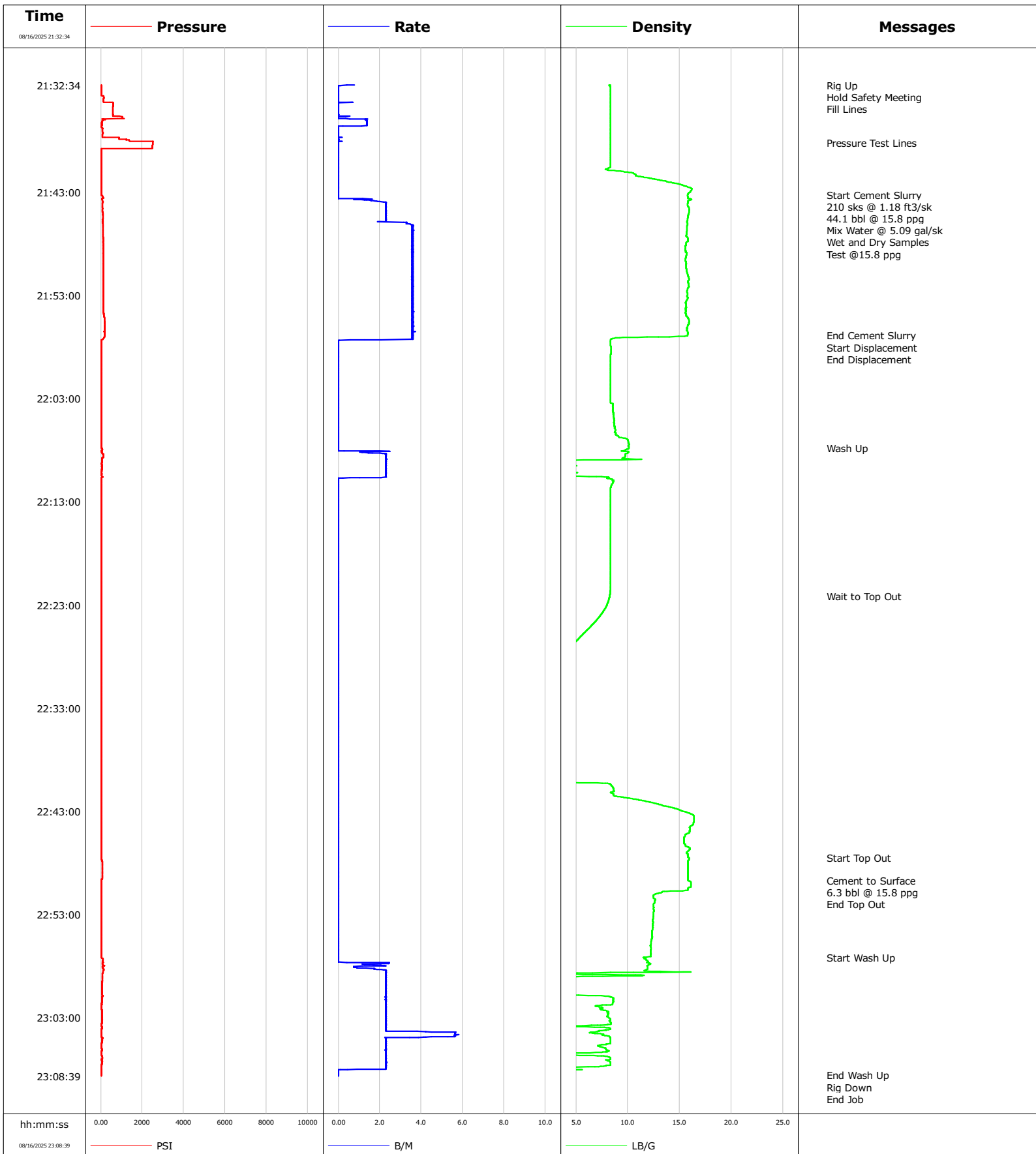
				Customer			Job Number			
				Oxy			1063462.11.12 U			
Well		Location (legal)		Schlumberger Location			Job Start			
HSR Lost Creek State 13-20							Aug/16/2025			
Field		Formation Name/Type		Deviation	Bit Size		Well MD	Well TVD		
DJ				deg	in		ft	ft		
County		State/Province		BHP	BHST		BHCT	Pore Press. Gradient		
Weld		Colorado		psi	degF		degF	lb/gal		
Well Master		API/UWI								
67462438		05-123-19588								
Rig Name	Drilled For	Service Via		Casing/Liner						
Ensign 122	Oil	Land		Depth, ft	Size, in	Weight, lb/ft	Grade	Thread		
Offshore Zone	Well Class	Well Type								
	Old	Re-entry								
Drilling Fluid Type		Max. Density	Plastic Viscosity		Tubing/Drill Pipe					
		lb/gal	cP		T/D	Depth, ft	Size, in	Weight, lb/ft	Grade	Thread
Service Line	Job Type									
Cementing	Plug		D	1602	4.5	16.6	N/A	N/A		
Max. Allowed Tub. Press	Max. Allowed Ann. Press	WH Connection		Perforations/Open Hole						
psi	psi	4 1/2" IF DP pin		Top, ft	Bottom, ft	shot/ft	No. of Shots	Total Interval		
Service Instructions Pressure Test : 2500 psi Estimated BOC=1602' ;Estimated TOC= 755 Cement Type Denstiy= Upper AGM @15.8 ppg Volume= 62.5 bbl ; Sacks =280 sks Yield = 1.17 ft3/sk ; GPS = 5.09 Water: Temp 71 ;Cl <500 ; pH 7 D907 (G Cement) = 94 lbs/sk WBWOB /// B547 (GASBLOK) = .1% BWOB /// D065 (Dispersant) = .1% BWOB /// D167A (Fluid Loss) = .5% BWOB/// S001 (Accelerator) = 1.5 % BWOB				ft	ft			ft		
				ft	ft			Diameter		
				ft	ft			in		
Casing/Tubing Secured		<input checked="" type="checkbox"/>	1 Hole Vol. Circulated prior to Cement	<input checked="" type="checkbox"/>	Casing Tools		Squeeze Job			
Lift Pressure		psi		Shoe Type			Squeeze Type			
Pipe Rotated		<input type="checkbox"/>	Pipe Reciprocated		<input type="checkbox"/>	Shoe Depth		ft	Tool Type	
No. Centralizers		Top Plugs	Bottom Plugs		Stage Tool Type			Tool Depth		
								ft		
Cement Head Type				Stage Tool Depth			ft	Tail Pipe Size		
								in		
Job Scheduled For		Arrived on Location		Leave Location		Collar Type		Tail Pipe Depth		
Aug/16/2025		Aug/16/2025		Aug/16/2025				ft		
				Collar Depth		ft	Sqz. Total Vol.			
							bbl			
Date	Time 24-hr clock	Treating Pressure PSI	Flow Rate B/M	Density LB/G	Volume BBL	Message				
08/16/2025	15:39:54	31	0.0	-0.00	0.0	Started Acquisition				
08/16/2025	15:43:41	31	5.7	8.35	2.0	Prime Up				
08/16/2025	15:47:04	31	0.0	8.35	4.1	Fill Lines				
08/16/2025	15:48:42	2434	0.0	8.35	4.1	Pressure Test Lines				
08/16/2025	15:53:11	31	0.0	15.73	4.1	Start Cement Slurry				
08/16/2025	15:54:00	91	2.3	15.78	5.0	280 sks @ 1.17 ft3/sk				
08/16/2025	16:11:49	104	1.1	15.68	64.0	End Cement Slurry				
08/16/2025	16:11:55	81	1.1	15.62	64.1	Start Displacement				
08/16/2025	16:16:53	114	3.0	8.36	73.9	End Displacement				
08/16/2025	16:27:10	63	0.0	9.48	73.9	Start Wash Up				
08/16/2025	16:36:23	13	0.0	6.62	97.6	End Wash Up				

Well HSR Lost Creek State 13-20	Field DJ	Job Start Aug/16/2025	Customer Oxy	Job Number 1063462.11.12 U
---	--------------------	---------------------------------	------------------------	--------------------------------------

Post Job Summary

Average Pump Rates, bbl/min				Volume of Fluid Injected, bbl			
Slurry 2.9	N2	Mud	Maximum Rate 5.7	Total Slurry 62.5	Mud 0.0	Spacer 5.0	N2
Treating Pressure Summary, psi				Breakdown Fluid			
Maximum 2503	Final 0	Average 108	Bump Plug to	Breakdown	Type	Volume bbl	Density lb/gal
Avg. N2 Percent %	Designed Slurry Volume 62.5 bbl	Displacement 13.4 bbl	Mix Water Temp 70 degF	Cement Circulated to Surface? <input type="checkbox"/>	Volume bbl		
				Washed Thru Perfs <input type="checkbox"/>	To ft		
Customer or Authorized Representative Isaac Rulla		Schlumberger Supervisor Matt Leiker			Circulation Lost <input type="checkbox"/>	Job Completed <input checked="" type="checkbox"/>	
					-	-	

Well	HSR Lost Creek State 13-20	Client	Oxy
Field	DJ	SIR No.	1063462.11.12 S
Engineer	Matt Leiker	Job Type	Plug
Country	United States	Job Date	08-16-2025



				Customer			Job Number		
				Oxy			1063462.11.12 S		
Well		Location (legal)			Schlumberger Location			Job Start	
HSR Lost Creek State 13-20								Aug/16/2025	
Field		Formation Name/Type		Deviation	Bit Size		Well MD	Well TVD	
DJ				deg	in		ft	ft	
County		State/Province		BHP	BHST	BHCT	Pore Press. Gradient		
Weld		Colorado		psi	degF	degF	lb/gal		
Well Master		API/UWI							
67462438		05-123-19588							
Rig Name	Drilled For		Service Via	Casing/Liner					
Ensign 122	Oil		Land	Depth, ft	Size, in	Weight, lb/ft	Grade	Thread	
Offshore Zone	Well Class		Well Type						
	Old		Re-entry						
Drilling Fluid Type		Max. Density	Plastic Viscosity	Tubing/Drill Pipe					
		lb/gal	cP	T/D	Depth, ft	Size, in	Weight, lb/ft	Grade	Thread
Service Line	Job Type			D	712.0	4.5	16.6	N/A	N/A
Cementing	Plug				0.0	0.0	0.0		
Max. Allowed Tub. Press	Max. Allowed Ann. Press		WH Connection	Perforations/Open Hole					
psi	psi		4 1/2" IF DP pin	Top, ft	Bottom, ft	shot/ft	No. of Shots	Total Interval	
Service Instructions Pressure Test : 2500 psi Estimated BOC = 712' ; Estimated TOC = 0' Cement Type Density = Surface AGM @ 15.8 ppg Volume = 44.1 bbl ; Sacks = 210 sks Top Out w/ 6.3 bbl @ 15.8 ppg Yield = 1.18 ft3/sk ; GPS = 5.09 Water: Temp 71;Cl <500 ; pH 7 D907 (G Cement) = 94 lbs/sk WBWOB /// B547 (GASBLOK) = .1% BWOB /// D065 (Dispersant) = .1% BWOB ///				ft	ft			ft	
				ft	ft			Diameter	
				ft	ft			in	
Casing/Tubing Secured		1 Hole Vol. Circulated prior to Cement	WH Connection	Casing Tools		Squeeze Job			
<input checked="" type="checkbox"/>		<input checked="" type="checkbox"/>	4 1/2" IF DP pin						
Lift Pressure		psi	Shoe Type	77	Squeeze Type				
Pipe Rotated		Pipe Reciprocated	Shoe Depth	ft	Tool Type				
<input type="checkbox"/>		<input type="checkbox"/>							
No. Centralizers		Top Plugs	Bottom Plugs	Stage Tool Type		Tool Depth			
						ft			
Cement Head Type				Stage Tool Depth		Tail Pipe Size			
				ft		in			
Job Scheduled For		Arrived on Location		Leave Location		Collar Type		Tail Pipe Depth	
Aug/16/2025		Aug/16/2025		Aug/16/2025				ft	
						Collar Depth		Sqz. Total Vol.	
						ft		bbl	
Date	Time 24-hr clock	Treating Pressure PSI	Flow Rate B/M	Density LB/G	Volume BBL	Message			
08/16/2025	21:32:34	27	1.2	8.36	0.0	Started Acquisition			
08/16/2025	21:33:34	27	0.0	8.36	0.1	Fill Lines			
08/16/2025	21:38:11	2512	0.0	8.36	1.0	Pressure Test Lines			
08/16/2025	21:43:14	36	0.0	15.81	1.0	Start Cement Slurry			
08/16/2025	21:44:00	91	2.3	15.83	1.7	210 sks @ 1.18 ft3/sk			
08/16/2025	21:56:53	187	3.6	15.80	45.3	End Cement Slurry			
08/16/2025	21:56:54	182	3.6	15.78	45.3	Start Displacement			
08/16/2025	21:57:19	31	0.6	8.35	46.7	End Displacement			
08/16/2025	22:07:48	63	0.0	10.13	46.7	Wash Up			
08/16/2025	22:22:08	31	0.0	8.26	52.5	Wait to Top Out			
08/16/2025	22:47:29	36	0.0	15.88	52.5	Start Top Out			
08/16/2025	22:49:43	27	0.0	15.82	52.5	Cement to Surface			
08/16/2025	22:49:44	27	0.0	15.88	52.5	6.3 bbl @ 15.8 ppg			
08/16/2025	22:50:01	27	0.0	16.12	52.5	End Top Out			
08/16/2025	22:57:10	40	0.0	11.50	52.5	Start Wash Up			

Well HSR Lost Creek State 13-20	Field DJ	Job Start Aug/16/2025	Customer Oxy	Job Number 1063462.11.12 S
---	--------------------	---------------------------------	------------------------	--------------------------------------

Post Job Summary

Average Pump Rates, bbl/min				Volume of Fluid Injected, bbl			
Slurry 2.8	N2	Mud	Maximum Rate 5.8	Total Slurry 50.4	Mud 0.0	Spacer 5.0	N2
Treating Pressure Summary, psi				Breakdown Fluid			
Maximum 2526	Final 0	Average 86	Bump Plug to	Breakdown	Type	Volume bbl	Density lb/gal
Avg. N2 Percent %	Designed Slurry Volume 77.8 bbl	Displacement 1.0 bbl	Mix Water Temp 70 degF	Cement Circulated to Surface? <input checked="" type="checkbox"/>	Volume bbl		
				Washed Thru Perfs <input type="checkbox"/>	To ft		
Customer or Authorized Representative Dale James		Schlumberger Supervisor Matt Leiker			Circulation Lost <input type="checkbox"/>	Job Completed <input checked="" type="checkbox"/>	
					-	-	