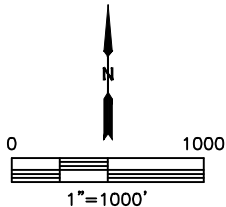
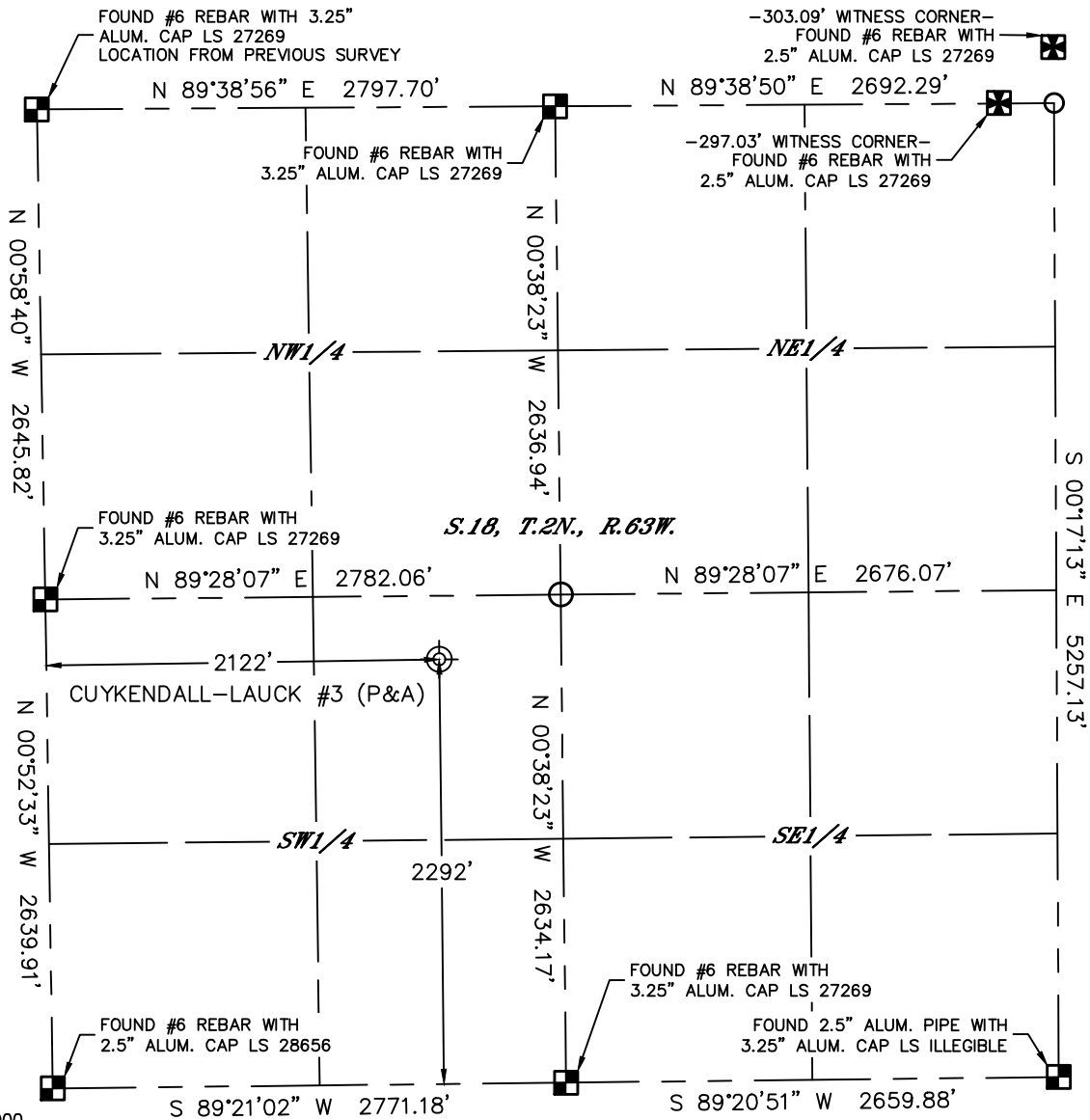




Lat40°, Inc. 6250 W. 10th Street, Unit 2, Greeley, CO 970-515-5294

PLUGGED AND ABANDONED WELL EXHIBIT CUYKENDALL-LAUCK #3

SECTION: 18
TOWNSHIP: 2N
RANGE: 63W
6TH. P.M.
WELD COUNTY, CO

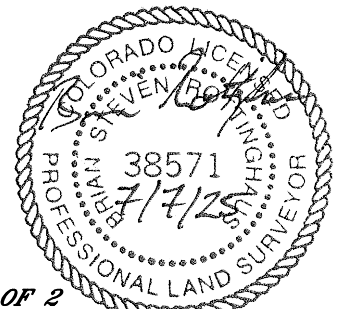


CLIENT: CHEVRON ROCKIES BUSINESS UNIT				LANDMAN: TED SCHULTZ					
INSTRUMENT OPERATOR: DUSTIN SIMON				SURVEY DATE: 7/2/2025		SURFACE USE: RANGELAND			
SHL FOOTAGE	SHL LAT °	SHL LONG °	SHL PDOP	SHL ELEV (FT.)	SHL 1/4/1/4	SHL S-T-R			
2292	FSL	2122	FWL	40.13742	-104.48278	1.1	4904	NESW	18-2-63
DESCRIPTION: FOUND STRONG METAL DETECTOR RING AT NOTED POSITION. FOUND DEADMAN ANCHORS 95 FEET WEST, 97 FEET SOUTH AND 96 FEET EAST OF NOTED POSITION. ALSO FOUND A BRAIDED STEEL CABLE, BROKEN GROUT AND A 3 INCH VERTICAL PIPE SET FLUSH WITH THE GROUND.									

NOTE:

- 1) Bearings shown are Grid Bearings of the Colorado State Plane Coordinate System, North Zone, North American Datum 1983. The lineal dimensions as contained herein are based upon the "U.S. Survey Foot."
- 2) Distances to section lines measured at 90 degrees from said section lines.
- 3) Ground elevations are based on an observed GPS elevation (NAVD 1988 DATUM).
- 4) Latitude and Longitude shown are (NAD 83 DATUM).
- 5) Sectional data as shown hereon is from previous surveys and was not verified for this P&A Exhibit.
- 6) This map does not represent a boundary survey.

- LEGEND
- = ALIQUOT MONUMENT AS DESCRIBED
 - = CALCULATED POSITION
 - = ABANDONED WELL



SHEET 1 OF 2
 Brian S. Rottinghaus—On behalf of Lat40°, Inc.
 Colorado Licensed Professional Land Surveyor No. 38571
 DATE: 7/7/2025
 PROJECT#: 2025213



Lat40°, Inc. 6250 W. 10th Street, Unit 2, Greeley, CO 970-515-5294

PLUGGED AND ABANDONED WELL EXHIBIT

CUYKENDALL-LAUCK #3

SECTION: 18
TOWNSHIP: 2N
RANGE: 63W
6TH. P.M.
WELD COUNTY, CO
DATE: 7/2/2025



VIEW NORTH



VIEW WEST



VIEW EAST



VIEW SOUTH