

HSR GREGG #15-10

API # 001-09197

Loc. # 320398

FIELD NAME JAMBOREE - #40590

Spud Date 4/3/1994

Basin DENVER - JULESBURG

Location SWSE 10 2S 64W 6

Elevation GL (ft) 5285

Elevation KB (ft) 5295

TD (ft) 8046

PBTD (ft) 8013

Formation Tops

DENVER - 94'

UPPER ARAPAHOE - 358'

LOWER ARAPAHOE - 647'

FOX HILLS TOP - 1239'

FOX HILLS BASE - 1511'

No SUSSEX Fm Production w/in 1 mi.
SUSSEX - 4800'

No SHANNON Fm Production w/in 1 mi.

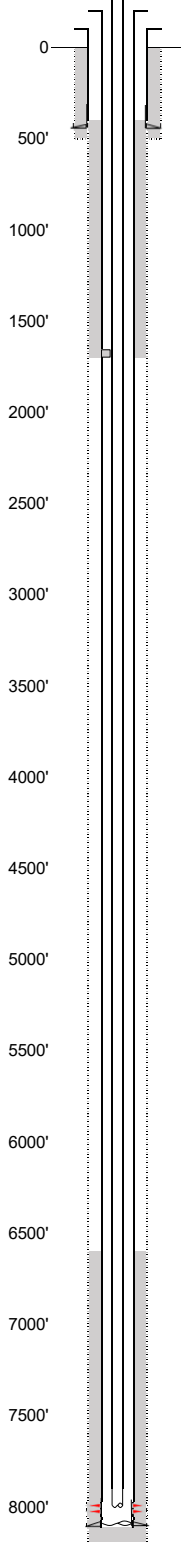
NIOBRARA - 7050'

FORT HAYS - 7417'

D SAND - 7827'

J SAND - 7884'

EXISTING



Existing Casing and Cement Coverage

SURF: Size: 8.625", Hole Size: 12.25 in.
Depth: 445 ft., Weight: 24
Cement: 315 sx, Top: 0 ft., Method: Vis

UPPER ARAPAHOE - 358'

LOWER ARAPAHOE - 647'

Deepest DWR w/in 1 mi. = 300'

FOX HILLS TOP - 1239'

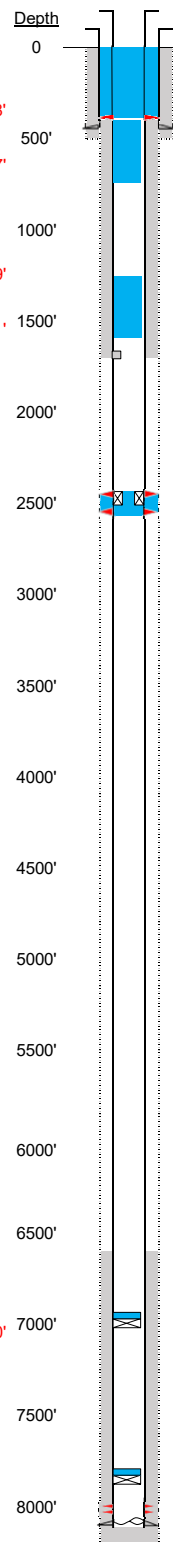
FOX HILLS BASE - 1511'

DV Tool @ 1698', 2nd stage cement to 350'

1ST, Size: 4.5", Hole Size: 7.875"
Depth: 8039 ft., Weight: 11.6
Cement: 250 sx, TOC: 6560', Method: CBL

2-3/8" tubing set at 7872'
TOC = 6560' (CBL)
J Sand Perfs 7902' - 7928'
PBTD (ft) 8013'
TD (ft) 8046'

PROPOSED



Plug Placement

Perf at 258', (50' above balanced plug), pump 75 sx through perfs. Leave 25 sx inside to surface.

Place 40 sx balanced plug at 697'. Tag @ 308' req'd.

Place 40 sx balanced plug at 1561'. Tag @ 1189 req'd.

VERIFY Cement w/ CBL

Perf at 2550' & 2450'
CICR @ 2500', pump 40 sx through perfs. Leave 10 sx on top.

CBL Required
VERIFY TOC w/ CBL

CIBP w/ 2 sx @ 6975' (75' above NBRR top).

Pressure test casing after setting CIBP.

CIBP w/ 2 sx @ 7827' (75' above top perf).