

API # 001-07332 Loc. # 319932
 FIELD NAME WATTENBERG - #90750
 Spud Date 5/24/1978
 Basin DENVER - JULESBURG
 Location SWNE 25 2S 65W 6
 Elevation GL (ft) 5299
 Elevation KB (ft) 5309
 TD (ft) 8200
 PBTD (ft) 8160

Formation Tops

DENVER - 64'

UPPER ARAPAHOE - 523'

LOWER ARAPAHOE - 769'

FOX HILLS TOP - 1357'

FOX HILLS BASE - 1610'

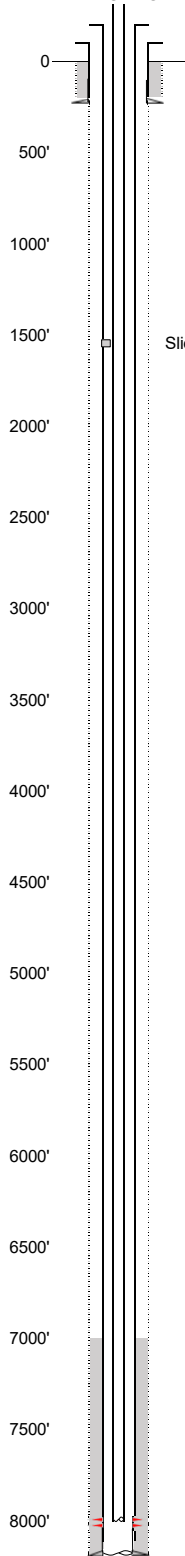
No SUSSEX Fm Production w/in 1 mi.

No SHANNON Fm Production w/in 1 mi.

From offset SAM KOCH #44-24 (001-09610)
 NIOBRARA - 7190'

D SAND - 7986'
 J SAND - 8042'

EXISTING



Existing Casing and Cement Coverage

SURF: Size: 8.625", Hole Size: 12.25 in.
 Depth: 221 ft., Weight: 24
 Cement: 300 sx, Top: 0 ft., Method: Vis

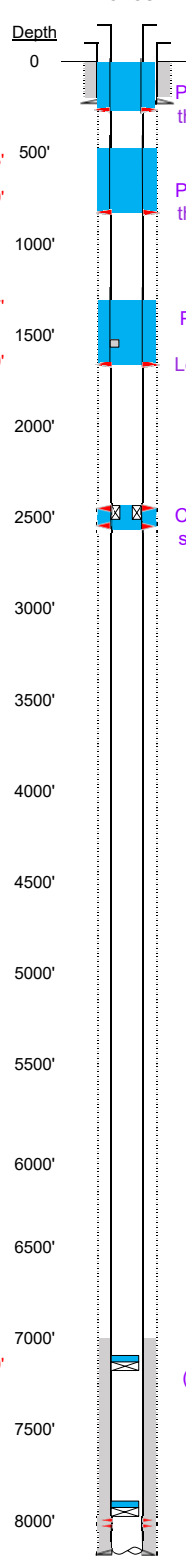
Deepest DWR w/in 1 mi. = 500'

Sliding Sleeve @ 1555', no known cement

1ST, Size: 5.5", Hole Size: 7.875"
 Depth: 8189 ft, Weight: 15.5
 Cement: 200 sx, TOC: 7050', Method: CALC

2-3/8" tubing set at 8020'
 TOC = 7050' (CALC)
 J Sand Perfs 8044' - 8062'
 PBTD (ft) 8160'
 TD (ft) 8200'

PROPOSED



Plug Placement

Perf at 100', pump 35 sx through perfs. Leave 50 sx inside to surface.

Perf at 819', pump 75 sx through perfs. Leave 50 sx inside. Tag above 473' reqd.

Perf at 1660' and pump 75 sx through perfs. Leave 50 sx inside. Tag above 1307' reqd.

Perf at 2550' & 2450' CICR @ 2500', pump 40 sx through perfs. Leave 10 sx on top.

CBL Required
 VERIFY TOC w/ CBL
 CIBP w/ 3 sx @ 7115' (75' above NBRR top).

Pressure test casing after setting CIBP.
 CIBP w/ 3 sx @ 7969' (75' above top perf).

NIOBRARA - 7190'