

# NOBLE ENERGY, INC

## Second Quarter 2025 Groundwater Monitoring Summary

September 4, 2025

Cornelius 63N65W 11SWNW

SWNW Sec 11, T3N, R65W

40.243751, -104.636822

Remediation # 28380

This groundwater monitoring summary has been prepared by Fremont Environmental, Inc. (Fremont) for the former Cornelius 63N65W 11SWNW tank battery location.

### Site History and Background

The site consists of the former Cornelius T3N-R65W-S11 L01 facility which serviced the Cornelius 11-22 and Cornelius 11-23 natural gas wells. The Cornelius 11-22 natural gas well was drilled in 1995 to a measured depth of approximately 7,705 feet and the Cornelius 11-23 natural gas well was drilled in 1994 to a measured depth of approximately 7,480 feet.

A historical release was discovered at the base of a former on-site produced water vault during decommissioning activities on May 2, 2023. A comprehensive site investigation was undertaken to define the magnitude and extent of soil impacts on February 8, 2024. Five monitoring wells were installed May 20, 2025 to delineate groundwater impacts encountered during the February 2024 site investigation. Groundwater points of compliance (POC) have been established to the north, south, and west adjacent to the produced water vault release area.

### Groundwater Monitoring Activities

Five monitoring wells were installed, and groundwater sampling was completed at the location on May 20, 2025. Monitoring wells (MW-1 to MW-5) were sampled and submitted to PACE Analytical Laboratory for analysis of benzene, toluene, ethylbenzene, total xylenes (BTEX), naphthalene, 1,2,4-trimethylbenzene (TMB), and 1,3,5-TMB by EPA Method 8260B, semi volatile organic compounds by EPA Method 8270E-SIM, chloride ion & sulfate ion by EPA Method 9056A and total dissolved solids (TDS) by EPA Method 2540 C-2011.

The laboratory analytical results indicate that Table 915-1 dissolved phase organic constituents were compliant with their respective standards in four of the five wells sampled. One monitoring well (MW-3) was reported with concentrations exceeding the ECMC Table 915-1 standard of 67 µg/L for 1,2,4 trimethylbenzene and 1,3,5 trimethylbenzene. Further, the laboratory analytical results indicate that Table 915-1 inorganic constituents, total dissolved solids, chloride, and sulfate exceeded their respective standards and/or calculated background concentrations in all five wells sampled. Native groundwater conditions for background comparison have not been characterized at the site.

The soil and groundwater analytical data are summarized in Tables 2 through 7. The site location is illustrated on Figure 1, monitoring well locations are illustrated on Figure 2, groundwater elevations are illustrated on Figure 3, and groundwater chemistry is illustrated on Figure 4 through Figure 6. A copy of the laboratory report, quality control data, and chain-of-custody documentation is included separately.

## **Current Remediation Strategy and Path Forward**

Excavation will be conducted to remove impacts within the vadose zone. Remedial options will be evaluated to address dissolved-phase groundwater impacts and soil impacts within the saturated zone. Monitored natural attenuation (MNA) will be implemented at the site to address dissolved-phase groundwater impacts until excavation commences. Monitoring wells destroyed during excavation will be replaced within 45 days of excavation completion.

Two additional monitoring wells will be installed to the east of MW-3 to establish an eastern point of compliance at the site. Based on the May 2025 data, groundwater flows from west to east at the site. The Operator proposes to install one groundwater monitoring well upgradient (west of MW-5), away from the release location, in an area undisturbed by oil and gas activity to characterize native groundwater conditions for background comparison.

A no further action designation will be requested from the ECMC when remediation criteria have been achieved and following the observation of four consecutive quarters of groundwater compliant with the applicable ECMC Table 915-1 standards under static conditions at the site. The Q2 2025 sampling event marks the zero consecutive quarters of ECMC-compliant groundwater at the site.

## TABLE OF CONTENTS

### Tables

- 1 Field Data Table Summary
- 2 Summary of Volatile Organic Soil Chemistry Data
- 3 Summary of Polycyclic Aromatic Hydrocarbon Soil Chemistry Data
- 4 Summary of Soil Suitability for Reclamation Data
- 5 Summary of Metals in Soil Chemistry Data
- 6 Summary of Groundwater Organic Chemistry Data
- 7 Summary of Groundwater Inorganic Chemistry Data

### Figures

- 1 Site Location Map
- 2 Site Map
- 3 Inferred Groundwater Contour Map
- 4 Groundwater Chemistry With 1,2,4 – and – 1,3,5 Trimethylbenzene Isoconcentration Contours
- 5 Organic Soil Chemistry Map
- 6 Metals and Inorganic Soil Chemistry Map

# ANALYTICAL TABLES

**TABLE 1**  
**FIELD DATA SUMMARY TABLE**  
**NOBLE 100322**  
**CORNELIUS 63N65W 11SWNW, WELD COUNTY, COLORADO**  
**REM # 28380**

Sample ID	Sample Date	Depth	GPS Data		PDOP Value	VOC Concentration (ppm)
			Latitude	Longitude		
AST01@6"	05/02/2023	0.5 Ft	40.2435800	-104.6371410	-	0.80
PWVB01@7'	05/02/2023	7.0 Ft	40.2435960	-104.6371150	-	177.20
PWVE01@6'	05/02/2023	6.0 Ft	40.2436110	-104.6370980	-	1,212.00
SEP02@4'	05/02/2023	4.0 Ft	40.2437230	-104.6368350	-	2.30
GW01	05/02/2023	7	40.2435960	-104.6371150	-	NA
SB-1	2/8/2024	6.0 Ft, 8.0 Ft	40.2436045	-104.6370857	NA	Refer to Bore Log
MW-1	2/8/2024	6.0 Ft, 8.0 Ft	40.2436189	-104.6370469	NA	Refer to Bore Log
SB-3	2/8/2024	5.0 Ft, 7.0 Ft	40.243578	-104.6371399	NA	Refer to Bore Log
SB-4	2/8/2024	6.0 Ft, 10.0 Ft	40.2436349	-104.6371103	NA	Refer to Bore Log
SB-5	2/8/2024	6.0 Ft, 8.0 Ft	40.2435673	-104.637065	NA	Refer to Bore Log
SB-6	2/8/2024	6.0 Ft, 12.0 Ft	40.243636	-104.6370005	NA	Refer to Bore Log
SB-7	2/8/2024	7.0 Ft, 11.0 Ft	40.2436605	-104.6371254	NA	Refer to Bore Log
SB-8	2/8/2024	8.0 Ft, 12.0 Ft	40.243689	-104.6371455	NA	Refer to Bore Log
SB-9	2/8/2024	4.0 Ft, 8.0 Ft	40.2436445	-104.6369486	NA	Refer to Bore Log
MW-1	5/20/2025	6 8	40.2436006	-104.6370911	-	0.0 44.2
MW-2	5/20/2025	6 10	40.2436507	-104.6371181	-	0.0 83.2
MW-3	5/20/2025	6 7	40.2436191	-104.6370305	-	98.3 115.4
MW-4	5/20/2025	6 16	40.2435671	-104.6370677	-	0.0 0.0
MW-5	5/20/2025	6 16	40.2435802	-104.6371426	-	0.0 0.0
BKG01	2/8/2024	6.0 Ft, 8.0 Ft	40.2434394	-104.6375086	NA	Refer to Bore Log

Sample ID	Sample Date	Depth	GPS Data		PDOP Value	VOC Concentration (ppm)
			Latitude/Longitude			
BKG02	2/8/2024	5.0 Ft, 6.0 Ft	40.2433978	-104.6373841	NA	Refer to Bore Log
BKG03	2/8/2024	5.0 Ft, 6.0 Ft	40.2433548	-104.6370966	NA	Refer to Bore Log
BKG04	2/8/2024	6.0 Ft, 7.0 Ft	40.2433795	-104.6368788	NA	Refer to Bore Log
BKG05	2/8/2024	6.0 Ft, 8.0 Ft	40.2434584	-104.6366622	NA	Refer to Bore Log

1. Global Positioning System (GPS) data is provided in decimal degrees using North American Datum (NAD) 83 UTMZone 13 North.

2. Volatile organic compound (VOC) concentrations are measured in the field using a photoionization detector (PID).

PDOP = Position Dilution of Precision

ppm = Parts per million

in. = Inches

ft. = Feet

bgs = Below ground surface

TABLE 2  
SUMMARY OF VOLATILE ORGANIC SOIL CHEMISTRY DATA  
NOBLE 100322  
CORNELIUS 63N65W 11SWNW, WELD COUNTY, COLORADO  
REM # 28380

Summ	Sample Date	Depth (ft)	Benzene (mg/kg)	Toluene (mg/kg)	Ethyl-Benzene (mg/kg)	Xylenes (mg/kg)	1,2,4-Trimethyl-Benzene (mg/kg)	1,3,5-Trimethyl-Benzene (mg/kg)	Naphthalene (mg/kg)	TPH (mg/kg)	TPH GRO (mg/kg)	TPH DRO (mg/kg)	TPH ORO (mg/kg)
ECMC Table 915-1 Limits (Residential SSL)			1.2	490	5.8	58	30	27	2	500	500**		
ECMC Table 915-1 Limits (Protection of Groundwater SSL)			0.0026	0.69	0.78	9.9	0.0081	0.0087	0.0038	500	500**		
AST01@6"	05/02/2023	0.5 Ft	<0.0020	<0.0050	<0.0050	<0.010	<0.0050	<0.0050	<0.0038	<500	<0.50	<50	<50
PWVB01@7'	05/02/2023	7.0 Ft	<0.0020	<0.0050	<0.0050	<0.010	<0.0050	<0.00500	<0.0038	<500	9.1	<50	<50
PWVE01@6'	05/02/2023	6.0 Ft	<0.0020	<0.0050	<0.0050	<0.010	<b>0.073</b>	<b>0.18</b>	<0.0038	<500	34	<50	<50
SEP02@4'	05/02/2023	4.0 Ft	<0.0020	<0.0050	<0.0050	<0.010	<0.0050	<0.0050	<0.0038	<500	<0.50	<50	<50
MW-1 (6.0')	2/8/2024	6.0 Ft	<0.0020	<0.0050	0.11	<0.010	<b>1.4</b>	<0.0050	0.035	<500	290	53	<50
MW-1 (8.0')	2/8/2024	8.0 Ft	<0.0020	<0.0050	0.24	<0.010	<b>6.8</b>	<0.0050	0.13	<500	230	120	<50
SB-1 (6.0')	2/8/2024	6.0 Ft	<0.0020	<0.0050	<0.0050	<0.010	<0.0050	<0.0050	<0.0038	<500	<0.50	<50	<50
SB-1 (8.0')	2/8/2024	8.0 Ft	<0.0020	<0.0050	0.01	0.054	<b>2.3</b>	<b>1.4</b>	0.0075	<500	140	<50	<50
SB-3 (5.0')	2/8/2024	5.0 Ft	<0.0020	<0.0050	<0.0050	<0.010	<0.0050	<0.0050	<0.0038	<500	<0.50	<50	<50
SB-3 (7.0')	2/8/2024	7.0 Ft	<0.0020	<0.0050	<0.0050	<0.010	<0.0050	<0.0050	<0.0038	<500	<0.50	<50	<50
SB-4 (10.0')	2/8/2024	10.0 Ft	<0.020	<0.050	0.13	0.45	<b>1.4</b>	<b>0.36</b>	<0.038	<500	96	<50	<50
SB-4 (6.0')	2/8/2024	6.0 Ft	<0.0020	<0.0050	<0.0050	<0.010	<0.0050	<0.0050	<0.0038	<500	<0.50	<50	<50
SB-5 (6.0')	2/8/2024	6.0 Ft	<0.0020	<0.0050	<0.0050	<0.010	<0.0050	<0.0050	<0.0038	<500	<0.50	<50	<50
SB-5 (8.0')	2/8/2024	8.0 Ft	<0.0020	<0.0050	<0.0050	<0.010	<0.0050	<0.0050	<0.0038	<500	<0.50	<50	<50
SB-6 (12.0')	2/8/2024	12.0 Ft	<0.0020	<0.0050	0.17	<0.010	<b>1.0</b>	<b>0.016</b>	0.017	<500	18	<50	<50
SB-6 (6.0')	2/8/2024	6.0 Ft	<0.0020	<0.0050	<0.0050	<0.010	<0.0050	<0.0050	<0.0038	<500	<0.50	<50	<50
SB-7 (11.0')	2/8/2024	11.0 Ft	<0.020	<0.050	0.097	0.18	<b>0.77</b>	<b>0.94</b>	0.071	<500	36	<50	<50
SB-7 (7.0')	2/8/2024	7.0 Ft	<0.0020	<0.0050	<0.0050	<0.010	<0.0050	<0.0050	<0.0038	<500	<0.50	<50	<50
SB-8 (12.0')	2/8/2024	12.0 Ft	<0.0020	<0.0050	<0.0050	<0.010	<0.0050	<0.0050	<0.0038	<500	1.7	<50	<50
SB-8 (8.0')	2/8/2024	8.0 Ft	<0.0020	<0.0050	<0.0050	<0.010	<0.0050	<0.0050	<0.0038	<500	<0.50	<50	<50
SB-9 (4.0')	2/8/2024	4.0 Ft	<0.0020	<0.0050	<0.0050	<0.010	<0.0050	<0.0050	<0.0038	<500	<0.50	<50	<50
SB-9 (8.0')	2/8/2024	8.0 Ft	<0.0020	<0.0050	0.11	0.033	<b>0.14</b>	<b>0.051</b>	0.027	<500	11	<50	<50
MW-1 6FT	05/20/2025	6	<0.00200	<0.0100	<0.0100	<0.100	<0.00500	<0.00500	<0.00300	<500	<0.100	<4.00	<4.00
MW-1 8FT	05/20/2025	8	<0.00200	<0.0100	<0.0100	<0.100	<0.00500	<0.00500	<0.00300	<500	1.17	<4.00	<4.00
MW-2 6FT	05/20/2025	6	<0.00200	<0.0100	<0.0100	<0.100	<0.00500	<0.00500	<0.00300	<500	<0.100	<4.00	<4.00
MW-2 10FT	05/20/2025	10	<0.00200	<0.0100	<0.0100	<0.100	<0.00500	<0.00500	<0.00300	<500	0.311	<4.00	<4.00
MW-3 6FT	05/20/2025	6	<0.00200	<0.0100	0.249	0.831	<b>5.38</b>	<b>2.36</b>	0.0705	<500	239	71.3	6.93
MW-3 7FT	05/20/2025	7	<0.00200	<0.0100	<0.0100	<0.100	<b>0.308</b>	<0.00500	<0.00300	<500	127	7.18	<4.00
MW-4 6FT	05/20/2025	6	<0.00200	<0.0100	<0.0100	<0.100	<0.00500	<0.00500	<0.00300	<500	<0.100	77	89.3
MW-4 16FT	05/20/2025	16	<0.00200	<0.0100	<0.0100	<0.100	<0.00500	<0.00500	<0.00300	<500	<0.100	<4.00	<4.00

Summ	Sample Date	Depth (ft)	Benzene (mg/kg)	Toluene (mg/kg)	Ethyl-Benzene (mg/kg)	Xylenes (mg/kg)	1,2,4-Trimethyl-Benzene (mg/kg)	1,3,5-Trimethyl-Benzene (mg/kg)	Naphthalene (mg/kg)	TPH (mg/kg)	TPH GRO (mg/kg)	TPH DRO (mg/kg)	TPH ORO (mg/kg)
ECMC Table 915-1 Limits (Residential SSL)			1.2	490	5.8	58	30	27	2	500	500**		
ECMC Table 915-1 Limits (Protection of Groundwater SSL)			0.0026	0.69	0.78	9.9	0.0081	0.0087	0.0038	500	500**		
MW-5 6FT	05/20/2025	6	<0.00200	<0.0100	<0.0100	<0.100	<0.00500	<0.00500	<0.00300	<500	<0.100	<4.00	<4.00
MW-5 16FT	05/20/2025	16	<0.00200	<0.0100	<0.0100	<0.100	<0.00500	<0.00500	<0.00300	<500	<0.100	<4.00	<4.00

1. Bold values exceed the ECMC Table 915-1 limit(s)
  2. Red & blue highlighted soil analytical values indicate an exceedance of the referenced soil screening level (SSL)
  3. \* Indicates laboratory minimum detection limit in excess of SSL
  4. \*\* Summation of GRO+DRO+ORO must be less than 500 mg/kg
- NA - Not analyzed

TABLE 3  
SUMMARY OF POLYCYCLIC AROMATIC HYDROCARBON SOIL CHEMISTRY DATA  
NOBLE 100322  
CORNELIUS 63N65W 11SWNW, WELD COUNTY, COLORADO  
REM # 28380

Sample ID	Sample Date	Depth (ft)	Acenaphthene (mg/kg)	Anthracene (mg/kg)	Benzo (a) Anthracene (mg/kg)	Benzo (a) Pyrene (mg/kg)	Benzo (b) Fluoranthene (mg/kg)	Benzo (k) Fluoranthene (mg/kg)	Chrysene (mg/kg)	Dibenzo (a,h) Anthracene (mg/kg)	Fluoranthene (mg/kg)	Fluorene (mg/kg)	Indeno (1,2,3-cd) Pyrene (mg/kg)	Pyrene (mg/kg)	1-Methyl - Naphthalene (mg/kg)	2-Methyl- Naphthalene (mg/kg)
ECMC Table 915-1 Limits (Residential SSL)			360	1800	1.1	0.11	1.1	11	110	0.11	240	240	1.1	180	18	24
ECMC Table 915-1 Limits (Protection of Groundwater SSL)			0.55	5.8	0.011	0.24	0.3	2.9	9	0.096	8.9	0.54	0.98	1.3	0.006	0.019
11-22 FL01@3.5'	05/02/2023	3.5 Ft	<0.00500	<0.00500	<0.00500	<0.00500	<0.00500	<0.00500	<0.00500	<0.00500	<0.00500	<0.00500	<0.00500	<0.00500	<0.00500	<0.00500
11-23 FL01@3.5'	05/02/2023	3.5 Ft	<0.00500	<0.00500	<0.00500	<0.00500	<0.00500	<0.00500	<0.00500	<0.00500	<0.00500	<0.00500	<0.00500	<0.00500	<0.00500	<0.00500
AST01@6"	05/02/2023	0.5 Ft	<0.00500	<0.00500	<0.00500	<0.00500	<0.00500	<0.00500	<0.00500	<0.00500	<0.00500	<0.00500	<0.00500	<0.00500	<0.00500	<0.00500
PWVB01@7'	05/02/2023	7.0 Ft	<0.00500	<0.00500	<0.00500	<0.00500	<0.00500	<0.00500	<0.00500	<0.00500	<0.00500	<0.00500	<0.00500	<0.00500	<0.00500	<0.00500
PWVE01@6'	05/02/2023	6.0 Ft	<0.00500	<0.00500	<0.00500	<0.00500	<0.00500	<0.00500	<0.00500	<0.00500	<0.00500	<0.00500	<0.00500	<0.00500	<0.00500	<b>0.0151</b>
SEP02@4'	05/02/2023	4.0 Ft	<0.00500	<0.00500	<0.00500	<0.00500	<0.00500	<0.00500	<0.00500	<0.00500	<0.00500	<0.00500	<0.00500	<0.00500	<0.00500	<0.00500
MW-1 (6.0')	2/8/2024	6.0 Ft	<0.00500	<0.00500	<0.00500	<0.00500	<0.00500	<0.00500	<0.00500	<0.00500	<0.00500	<0.00500	<0.00500	<0.00500	<b>0.0105</b>	<b>0.0292</b>
MW-1 (8.0')	2/8/2024	8.0 Ft	0.0175	<0.00500	0.00620	<0.00500	<0.00500	<0.00500	<0.00500	<0.00500	<0.00500	0.0360	<0.00500	<0.00500	<b>0.127</b>	<b>0.86</b>
SB-1 (6.0')	2/8/2024	6.0 Ft	<0.00500	<0.00500	<0.00500	<0.00500	<0.00500	<0.00500	<0.00500	<0.00500	<0.00500	<0.00500	<0.00500	<0.00500	<0.00500	<0.00500
SB-1 (8.0')	2/8/2024	8.0 Ft	<0.00500	<0.00500	<0.00500	<0.00500	<0.00500	<0.00500	<0.00500	<0.00500	<0.00500	<0.00500	<0.00500	<0.00500	<b>0.0348</b>	<b>0.0882</b>
SB-3 (5.0')	2/8/2024	5.0 Ft	<0.00500	<0.00500	<0.00500	<0.00500	<0.00500	<0.00500	<0.00500	<0.00500	<0.00500	<0.00500	<0.00500	<0.00500	<0.00500	<0.00500
SB-3 (7.0')	2/8/2024	7.0 Ft	<0.00500	<0.00500	<0.00500	<0.00500	<0.00500	<0.00500	<0.00500	<0.00500	<0.00500	<0.00500	<0.00500	<0.00500	<0.00500	<0.00500
SB-4 (10.0')	2/8/2024	10.0 Ft	<0.00500	<0.00500	<0.00500	<0.00500	<0.00500	<0.00500	<0.00500	<0.00500	<0.00500	<0.00500	<0.00500	<0.00500	<b>0.0284</b>	<b>0.0739</b>
SB-4 (6.0')	2/8/2024	6.0 Ft	<0.00500	<0.00500	<0.00500	<0.00500	<0.00500	<0.00500	<0.00500	<0.00500	<0.00500	<0.00500	<0.00500	<0.00500	<0.00500	<0.00500
SB-5 (6.0')	2/8/2024	6.0 Ft	<0.00500	<0.00500	<0.00500	<0.00500	<0.00500	<0.00500	<0.00500	<0.00500	<0.00500	<0.00500	<0.00500	<0.00500	<0.00500	<0.00500
SB-5 (8.0')	2/8/2024	8.0 Ft	<0.00500	<0.00500	<0.00500	<0.00500	<0.00500	<0.00500	<0.00500	<0.00500	<0.00500	<0.00500	<0.00500	<0.00500	<0.00500	<0.00500
SB-6 (12.0')	2/8/2024	12.0 Ft	<0.00500	<0.00500	<0.00500	<0.00500	<0.00500	<0.00500	<0.00500	<0.00500	<0.00500	<0.00500	<0.00500	<0.00500	<0.00500	<0.00500
SB-6 (6.0')	2/8/2024	6.0 Ft	<0.00500	<0.00500	<0.00500	<0.00500	<0.00500	<0.00500	<0.00500	<0.00500	<0.00500	<0.00500	<0.00500	<0.00500	<0.00500	<0.00500
SB-7 (11.0')	2/8/2024	11.0 Ft	<0.00500	<0.00500	<0.00500	<0.00500	<0.00500	<0.00500	<0.00500	<0.00500	<0.00500	<0.00500	<0.00500	<0.00500	<0.00500	<0.00500
SB-7 (7.0')	2/8/2024	7.0 Ft	<0.00500	<0.00500	<0.00500	<0.00500	<0.00500	<0.00500	<0.00500	<0.00500	<0.00500	<0.00500	<0.00500	<0.00500	<0.00500	<0.00500
SB-8 (12.0')	2/8/2024	12.0 Ft	<0.00500	<0.00500	<0.00500	<0.00500	<0.00500	<0.00500	<0.00500	<0.00500	<0.00500	<0.00500	<0.00500	<0.00500	<0.00500	<0.00500
SB-8 (8.0')	2/8/2024	8.0 Ft	<0.00500	<0.00500	<0.00500	<0.00500	<0.00500	<0.00500	<0.00500	<0.00500	<0.00500	<0.00500	<0.00500	<0.00500	<0.00500	<0.00500
SB-9 (4.0')	2/8/2024	4.0 Ft	<0.00500	<0.00500	<0.00500	<0.00500	<0.00500	<0.00500	<0.00500	<0.00500	<0.00500	<0.00500	<0.00500	<0.00500	<0.00500	<0.00500
SB-9 (8.0')	2/8/2024	8.0 Ft	<0.00500	<0.00500	<0.00500	<0.00500	<0.00500	<0.00500	<0.00500	<0.00500	<0.00500	<0.00500	<0.00500	<0.00500	<b>0.0123</b>	<b>0.0290</b>
MW-1 6FT	05/20/2025	6	<0.0330	<0.0330	<0.00600	<0.0330	<0.0330	<0.0330	<0.0330	<0.0330	<0.0330	<0.0330	<0.0330	<0.0330	<0.00300	<0.0120
MW-1 8FT	05/20/2025	8	<0.0330	<0.0330	<0.00600	<0.0330	<0.0330	<0.0330	<0.0330	<0.0330	<0.0330	<0.0330	<0.0330	<0.0330	<0.00300	<0.0120
MW-2 6FT	05/20/2025	6	<0.0330	<0.0330	<0.00600	<0.0330	<0.0330	<0.0330	<0.0330	<0.0330	<0.0330	<0.0330	<0.0330	<0.0330	<0.00300	<0.0120
MW-2 10FT	05/20/2025	10	<0.0330	<0.0330	<0.00600	<0.0330	<0.0330	<0.0330	<0.0330	<0.0330	<0.0330	<0.0330	<0.0330	<0.0330	<0.00300	<0.0120
MW-3 6FT	05/20/2025	6	<0.0330	<0.0330	<0.00600	<0.0330	<0.0330	<0.0330	<0.0330	<0.0330	<0.0330	<0.0330	<0.0330	<0.0330	<b>0.112</b>	<b>0.291</b>
MW-3 7FT	05/20/2025	7	<0.0330	<0.0330	<0.00600	<0.0330	<0.0330	<0.0330	<0.0330	<0.0330	<0.0330	<0.0330	<0.0330	<0.0330	<0.00300	<0.0120
MW-4 6FT	05/20/2025	6	<0.0330	<0.0330	<0.00600	<0.0330	<0.0330	<0.0330	<0.0330	<0.0330	<0.0330	<0.0330	<0.0330	<0.0330	<0.00300	<0.0120
MW-4 16FT	05/20/2025	16	<0.0330	<0.0330	<0.00600	<0.0330	<0.0330	<0.0330	<0.0330	<0.0330	<0.0330	<0.0330	<0.0330	<0.0330	<0.00300	<0.0120
MW-5 6FT	05/20/2025	6	<0.0330	<0.0330	<0.00600	<0.0330	<0.0330	<0.0330	<0.0330	<0.0330	<0.0330	<0.0330	<0.0330	<0.0330	<0.00300	<0.0120
MW-5 16FT	05/20/2025	16	<0.0330	<0.0330	<0.00600	<0.0330	<0.0330	<0.0330	<0.0330	<0.0330	<0.0330	<0.0330	<0.0330	<0.0330	<0.00300	<0.0120

1. Bold values exceed the ECMC Table 915-1 limit(s)  
2. Red & blue highlighted soil analytical values indicate an exceedance of the referenced soil screening level (SSL)  
3. \* Indicates laboratory minimum detection limit in excess of SSL  
NA - Not analyzed

**TABLE 4**  
**SUMMARY OF SOIL SUITABILITY FOR RECLAMATION**  
**NOBLE 100322**  
**CORNELIUS 63N65W 11SWNW, WELD COUNTY, COLORADO**  
**REM # 28380**

Sample ID	Sample Date	Depth (ft)	pH (Standard Units)	EC (mmhos/cm)	SAR (Standard Units)	Boron (mg/L)
ECMC Table 915-1 Soil Suitability Limits			6 - 8.3	<4	<6	2
AST01@6"	05/02/2023	0.5 Ft	5.57	0.0389	0.0261	0.0285
PWVB01@7'	05/02/2023	7.0 Ft	7.55	0.764	3.48	0.228
PWVE01@6'	05/02/2023	6.0 Ft	7.52	0.661	3.64	0.211
SEP02@4'	05/02/2023	4.0 Ft	7.4	0.251	0.277	0.0669
MW-1 (6.0')	2/8/2024	6.0 Ft	8.41	0.283	2.03	<2.00
MW-1 (8.0')	2/8/2024	8.0 Ft	6.85	0.344	1.68	<2.00
SB-1 (6.0')	2/8/2024	6.0 Ft	8.3	0.139	0.0936	0.125
SB-1 (8.0')	2/8/2024	8.0 Ft	7.66	0.54	2.48	<2.00
SB-3 (5.0')	2/8/2024	5.0 Ft	6.09	0.0837	0.0685	<2.00
SB-3 (7.0')	2/8/2024	7.0 Ft	5.51	0.174	0.535	<2.00
SB-4 (10.0')	2/8/2024	10.0 Ft	8.54	0.437	2.98	<2.00
SB-4 (6.0')	2/8/2024	6.0 Ft	5.19	0.0704	0.0502	<2.00
SB-5 (6.0')	2/8/2024	6.0 Ft	7.84	0.287	0.217	<2.00
SB-5 (8.0')	2/8/2024	8.0 Ft	7.85	0.287	1.07	<2.00
SB-6 (12.0')	2/8/2024	12.0 Ft	7.59	0.284	2.14	<2.00
SB-6 (6.0')	2/8/2024	6.0 Ft	7.55	0.305	0.116	<2.00
SB-7 (11.0')	2/8/2024	11.0 Ft	7.96	0.403	3.46	<2.00
SB-7 (7.0')	2/8/2024	7.0 Ft	6.24	0.0268	0.0366	<2.00
SB-8 (12.0')	2/8/2024	12.0 Ft	8.59	0.464	1.47	<2.00
SB-8 (8.0')	2/8/2024	8.0 Ft	7.2	0.0505	0.126	<2.00
SB-9 (4.0')	2/8/2024	4.0 Ft	7.64	0.147	0.107	<2.00
SB-9 (8.0')	2/8/2024	8.0 Ft	7.03	0.201	1.17	<2.00
MW-1 6FT	05/20/2025	6	8.19	0.211	0.428	<0.200
MW-1 8FT	05/20/2025	8	8.69	0.397	3.25	0.22
MW-2 6FT	05/20/2025	6	7.79	0.181	0.222	<0.200
MW-2 10FT	05/20/2025	10	8.74	0.498	2.97	0.239
MW-3 6FT	05/20/2025	6	7.45	0.2	0.668	<0.200

**TABLE 4**  
**SUMMARY OF SOIL SUITABILITY FOR RECLAMATION**  
**NOBLE 100322**  
**CORNELIUS 63N65W 11SWNW, WELD COUNTY, COLORADO**  
**REM # 28380**

Sample ID	Sample Date	Depth (ft)	pH (Standard Units)	EC (mmhos/cm)	SAR (Standard Units)	Boron (mg/L)
ECMC Table 915-1 Soil Suitability Limits			6 - 8.3	<4	<6	2
MW-3 7FT	05/20/2025	7	<b>8.89</b>	0.742	3.62	0.213
MW-4 6FT	05/20/2025	6	8.13	0.329	2.16	<0.200
MW-4 16FT	05/20/2025	16	<b>8.56</b>	0.354	2.21	<0.200
MW-5 6FT	05/20/2025	6	6.99	0.363	0.217	<0.200
MW-5 16FT	05/20/2025	16	<b>8.55</b>	0.356	2.13	<0.200
BKG01@6.0'	02/08/2024	6.0 Ft	8.23	1.12	<b>9.86</b>	<b>2.97</b>
BKG01@8.0'	02/08/2024	8.0 Ft	8.12	1.19	4.89	<2.00
BKG02@5.0'	02/08/2024	5.0 Ft	7.23	1.4	3.52	<2.00
BKG02@6.0'	02/08/2024	6.0 Ft	<b>8.45</b>	1.71	<b>8.8</b>	<2.00
BKG03@5.0'	02/08/2024	5.0 Ft	7.49	1.07	1.49	<2.00
BKG03@6.0'	02/08/2024	6.0 Ft	7.82	0.748	4.32	<2.00
BKG04@6.0'	02/08/2024	6.0 Ft	8.14	1.16	4.34	<2.00
BKG04@7.0'	02/08/2024	7.0 Ft	8.22	1.32	<b>6.58</b>	<2.00
BKG05@6.0'	02/08/2024	6.0 Ft	7.27	0.634	1.06	<2.00
BKG05@8.0'	02/08/2024	8.0 Ft	7.76	0.836	4.73	<2.00
Maximum Background Concentration			8.45	1.71	9.86	2.97

1. **Bold** faced values exceed the ECMC Table 915-1 limit(s), but are within background concentrations.

2. **Bold** faced values exceed the ECMC Table 915-1 limit(s) and native background concentrations.

3. Brown highlighted soil analytical values indicate a regulatory exceedance.

NA - Not analyzed/Not applicable

**TABLE 5**  
**SUMMARY OF METALS IN SOIL CHEMISTRY DATA**  
**NOBLE 100322**  
**CORNELIUS 63N65W 11SWNW, WELD COUNTY, COLORADO**  
**REM # 28380**

Sample ID	Sample Date	Depth (ft)	Arsenic (mg/kg)	Barium (mg/kg)	Cadmium (mg/kg)	Chromium (VI) (mg/kg)	Copper (mg/kg)	Lead (mg/kg)	Nickel (mg/kg)	Selenium (mg/kg)	Silver (mg/kg)	Zinc (mg/kg)
ECMC Table 915-1 Limits (Residential SSL)			0.68	15000	71	0.3	3100	400	1500	390	390	23000
ECMC Table 915-1 Limits (Protection of Groundwater SSL)			0.29	82	0.38	0.00067	46	14	26	0.26	0.8	370
PWVE01@6'	05/02/2023	6.0 Ft	1.31	45.3	<0.235	<0.30	2.55	3.68	2.04	<0.260	<0.0235	10.3
MW-1 (6.0')	2/8/2024	6.0 Ft	3.92	106	0.213	NA	7.43	9.33	5.4	<0.260	0.0495	21.1
MW-1 (8.0')	2/8/2024	8.0 Ft	1.76	52.7	<0.200	NA	2.8	4.06	2.67	<0.260	0.0206	11.4
SB-1 (6.0')	2/8/2024	6.0 Ft	1.36	43.1	<0.181	NA	2.44	3.57	2.47	<0.236	<0.0181	10.1
SB-1 (8.0')	2/8/2024	8.0 Ft	1.67	47.7	<0.180	NA	2.88	3.61	2.84	<0.234	0.0182	10.3
SB-3 (5.0')	2/8/2024	5.0 Ft	1.39	54	<0.200	NA	2.67	5.59	2.56	<0.260	0.0349	11
SB-3 (7.0')	2/8/2024	7.0 Ft	2.00	88.4	<0.200	NA	3.14	5.2	3.5	<0.260	0.0463	15.3
SB-4 (10.0')	2/8/2024	10.0 Ft	1.82	88.7	0.227	NA	5.87	8.57	5.08	<0.236	0.0453	20.9
SB-4 (6.0')	2/8/2024	6.0 Ft	1.36	43	<0.179	NA	2.13	3.25	2.25	<0.232	0.0181	9.62
SB-5 (6.0')	2/8/2024	6.0 Ft	1.45	55.8	<0.200	NA	2.68	3.87	2.96	<0.260	<0.0200	12.2
SB-5 (8.0')	2/8/2024	8.0 Ft	1.47	69.9	<0.200	NA	4.62	6.61	4.39	<0.260	0.0429	15.8
SB-6 (12.0')	2/8/2024	12.0 Ft	1.68	96	0.235	NA	4.85	6.06	4.38	<0.260	0.0409	19.1
SB-6 (6.0')	2/8/2024	6.0 Ft	1.26	43.8	<0.200	NA	2.78	3.57	2.87	<0.260	<0.0200	9.89
SB-7 (11.0')	2/8/2024	11.0 Ft	1.91	104	0.196	NA	7.05	10.4	5.6	<0.232	0.0606	19.8
SB-7 (7.0')	2/8/2024	7.0 Ft	1.39	48.3	<0.200	NA	2.4	3.48	2.68	<0.260	<0.0200	11.3
SB-8 (12.0')	2/8/2024	12.0 Ft	1.03	123	0.247	NA	5.56	7.09	5.02	<0.260	0.047	21.7
SB-8 (8.0')	2/8/2024	8.0 Ft	1.31	43.3	<0.200	NA	2.34	3.2	2.38	<0.260	<0.0200	9.6
SB-9 (4.0')	2/8/2024	4.0 Ft	1.56	43.6	<0.179	NA	2.7	3.64	2.62	<0.232	<0.0179	10.7
SB-9 (8.0')	2/8/2024	8.0 Ft	1.88	108	<0.200	NA	6.61	9.08	4.69	<0.260	0.0532	19.6
MW-1 6FT	05/20/2025	6	1.6	48.4	<0.100	<0.200	<10.0	<10.0	<10.0	0.138	<0.500	<50.0
MW-1 8FT	05/20/2025	8	1.44	38.1	<0.100	<0.200	<10.0	<10.0	<10.0	<0.100	<0.500	<50.0
MW-2 6FT	05/20/2025	6	1.43	42.8	<0.100	<0.200	<10.0	<10.0	<10.0	0.181	<0.500	<50.0
MW-2 10FT	05/20/2025	10	1.08	83	<0.100	<0.200	<10.0	<10.0	<10.0	0.196	<0.500	<50.0
MW-3 6FT	05/20/2025	6	2.55	132	0.126	<0.200	14.6	11.7	12.8	0.345	<0.500	57.1
MW-3 7FT	05/20/2025	7	0.638	76.2	0.141	<0.200	<10.0	<10.0	<10.0	0.114	<0.500	<50.0
MW-4 6FT	05/20/2025	6	1.43	54.9	<0.100	<0.200	<10.0	<10.0	<10.0	0.173	<0.500	<50.0
MW-4 16FT	05/20/2025	16	1.83	76.5	<0.100	<0.200	<10.0	<10.0	<10.0	0.148	<0.500	<50.0
MW-5 6FT	05/20/2025	6	1.38	62.2	<0.100	<0.200	<10.0	<10.0	<10.0	0.194	<0.500	<50.0
MW-5 16FT	05/20/2025	16	2.21	64.2	<0.100	<0.200	<10.0	<10.0	<10.0	0.135	<0.500	<50.0
BKG01@6.0'	02/08/2024	6.0 Ft	2.31	121	0.224	NA	5.62	8.12	5.47	<0.260	0.0844	20.7
BKG01@8.0'	02/08/2024	8.0 Ft	1.39	44.7	<0.200	NA	2.17	2.93	2.33	<0.260	<0.0200	8.67
BKG02@5.0'	02/08/2024	5.0 Ft	0.894	27	<0.200	NA	2.82	4.92	1.68	<0.260	<0.0200	11.9
BKG02@6.0'	02/08/2024	6.0 Ft	1.59	83	<0.200	NA	2.95	4.47	3.52	<0.260	0.0213	12.1
BKG03@5.0'	02/08/2024	5.0 Ft	1.1	25	<0.200	NA	2.25	3.48	1.78	<0.260	<0.0200	9.33
BKG03@6.0'	02/08/2024	6.0 Ft	1.72	53.1	<0.200	NA	2.58	3.76	3.06	<0.260	0.0203	10.9

TABLE 5  
SUMMARY OF METALS IN SOIL CHEMISTRY DATA  
NOBLE 100322  
CORNELIUS 63N65W 11SWNW, WELD COUNTY, COLORADO  
REM # 28380

Sample ID	Sample Date	Depth (ft)	Arsenic (mg/kg)	Barium (mg/kg)	Cadmium (mg/kg)	Chromium (VI) (mg/kg)	Copper (mg/kg)	Lead (mg/kg)	Nickel (mg/kg)	Selenium (mg/kg)	Silver (mg/kg)	Zinc (mg/kg)
ECMC Table 915-1 Limits (Residential SSL)			0.68	15000	71	0.3	3100	400	1500	390	390	23000
ECMC Table 915-1 Limits (Protection of Groundwater SSL)			0.29	82	0.38	0.00067	46	14	26	0.26	0.8	370
BKG04@6.0'	02/08/2024	6.0 Ft	1.1	28.2	<0.200	NA	2.38	4	2.11	<0.260	<0.0200	9.73
BKG04@7.0'	02/08/2024	7.0 Ft	3.36	53	<0.200	NA	2.61	3.59	3.11	<0.260	0.0283	9.87
BKG05@6.0'	02/08/2024	6.0 Ft	1.05	13.2	<0.200	NA	2.37	3.91	1.27	<0.260	<0.0200	9.58
BKG05@8.0'	02/08/2024	8.0 Ft	0.981	20.7	<0.200	NA	1.8	2.55	2.03	<0.260	<0.0200	8.1
1.25x Maximum Background Concentration			4.2	151.25	0.28	0	7.025	10.15	6.8375	0.325	0.1055	25.875

- Bold** faced values exceed the ECMC Table 915-1 limit(s), but are within 1.25x background concentrations.
- Red** faced values exceed the ECMC Table 915-1 limit(s) and native background concentrations.
- Red & blue highlighted soil analytical values indicate an exceedance of the referenced soil screening level (SSL).
- Non-detect background results accounted for in the highest background concentration by using the reporting limit.

ECMC = Energy & Carbon Management Commission

(<) = Analytical result is less than the indicated laboratory reporting limit.

mg/kg = Milligrams per kilogram

ft. = Feet

bgs = Below ground surface

\* Indicates laboratory minimum detection limit in excess of SSL

NA - Not analyzed/Not applicable

TABLE 6  
SUMMARY OF GROUNDWATER ELEVATION DATA AND ORGANIC CHEMISTRY DATA  
NOBLE 100322  
CORNELIUS 63N65W 11SWNW, WELD COUNTY, COLORADO  
REM # 28380

Sample ID	Sample Date	Benzene (µg/L)	Toluene (µg/L)	Ethyl-Benzene (µg/L)	Xylenes (µg/L)	Naphthalene (µg/L)	1,2,4-Trimethyl-Benzene (µg/L)	1,3,5-Trimethyl-Benzene (µg/L)	TOC Elevation (ft)	Depth to Groundwater Below TOC (ft)	Depth to Groundwater Below Ground Surface (ft)	Groundwater Elevation (ft)	LNAPL Thickness (ft)
ECMC Table 915-1 Limits		5.0	560	700	1400	140	67	67					
GW01	05/02/2023	9	2.2	200	1400	43	460	300	NA	NA	NA	NA	
MW-1	02/08/24	<1.0	<1.0	76	<2.0	19	630	<1.0	NA	10.70	NA	7.70	NP
	05/17/24	DES	DES	DES	DES	DES	DES	DES	DES	DES	DES	DES	DES
MW-1	05/20/25	<1.00	<1.00	<1.00	<3.00	<5.00	9.3	1.3	98.44	4.45	NA	93.99	NP
MW-2	05/20/25	<1.00	<1.00	<1.00	<3.00	<5.00	2.22	<1.00	100.00	6.40	NA	93.60	NP
MW-3	05/20/25	<1.00	<1.00	128	306	17.6	1040	309	97.50	4.00	NA	93.50	NP
MW-4	05/20/25	<1.00	<1.00	<1.00	<3.00	<5.00	<1.00	<1.00	98.10	4.32	NA	93.78	NP
MW-5	05/20/25	<1.00	<1.00	<1.00	<3.00	<5.00	<1.00	<1.00	98.30	4.49	NA	93.81	NP

1. Bold values exceed the ECMC limit(s)

2. Red highlighted groundwater analytical values indicate a regulatory exceedance

NP - No measurable LNAPL, NA - Not Analyzed, INA - Inaccessible, IW - Insufficient Water, DES - Destroyed

**TABLE 7**  
**SUMMARY OF INORGANIC GROUNDWATER CHEMISTRY DATA**  
**NOBLE 100322**  
**CORNELIUS 63N65W 11SWNW, WELD COUNTY, COLORADO**  
**REM # 28380**

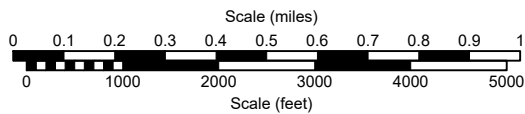
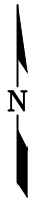
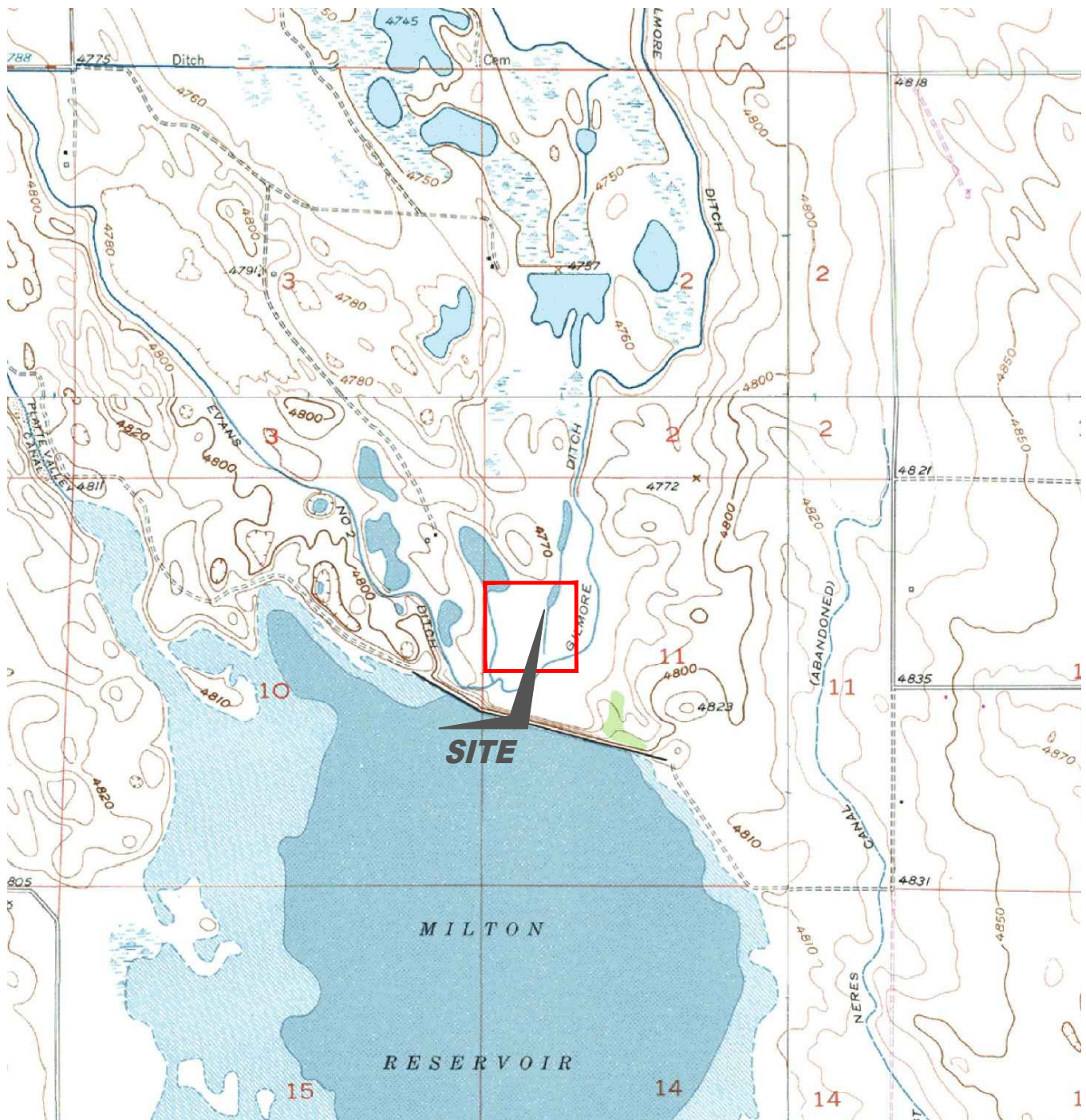
Sample ID	Sample Date	Total Dissolved Solids (mg/L)	Chloride Ion (mg/L)	Sulfate Ion (mg/L)
ECMC Table 915-1 Limits		<1.25 x local background	250 or <1.25 x local background	250 or <1.25 x local background
MW-1	5/20/25	<b>1830</b>	<b>374</b>	<b>512</b>
MW-2	5/20/25	<b>1980</b>	<b>388</b>	<b>599</b>
MW-3	5/20/25	<b>1310</b>	<b>266</b>	<b>288</b>
MW-4	5/20/25	<b>1700</b>	<b>319</b>	<b>458</b>
MW-5	5/20/25	<b>2200</b>	<b>392</b>	<b>604</b>
Max Background Concentration (Current)		NA	NA	NA

1. Bold values exceed the ECMC limit(s)

2. Blue highlighted groundwater analytical values indicate a regulatory exceedance

NP - No measurable LNAPL, NA - Not Analyzed, INA - Inaccessible, IW - Insufficient Water, DES - Destroyed

# FIGURES



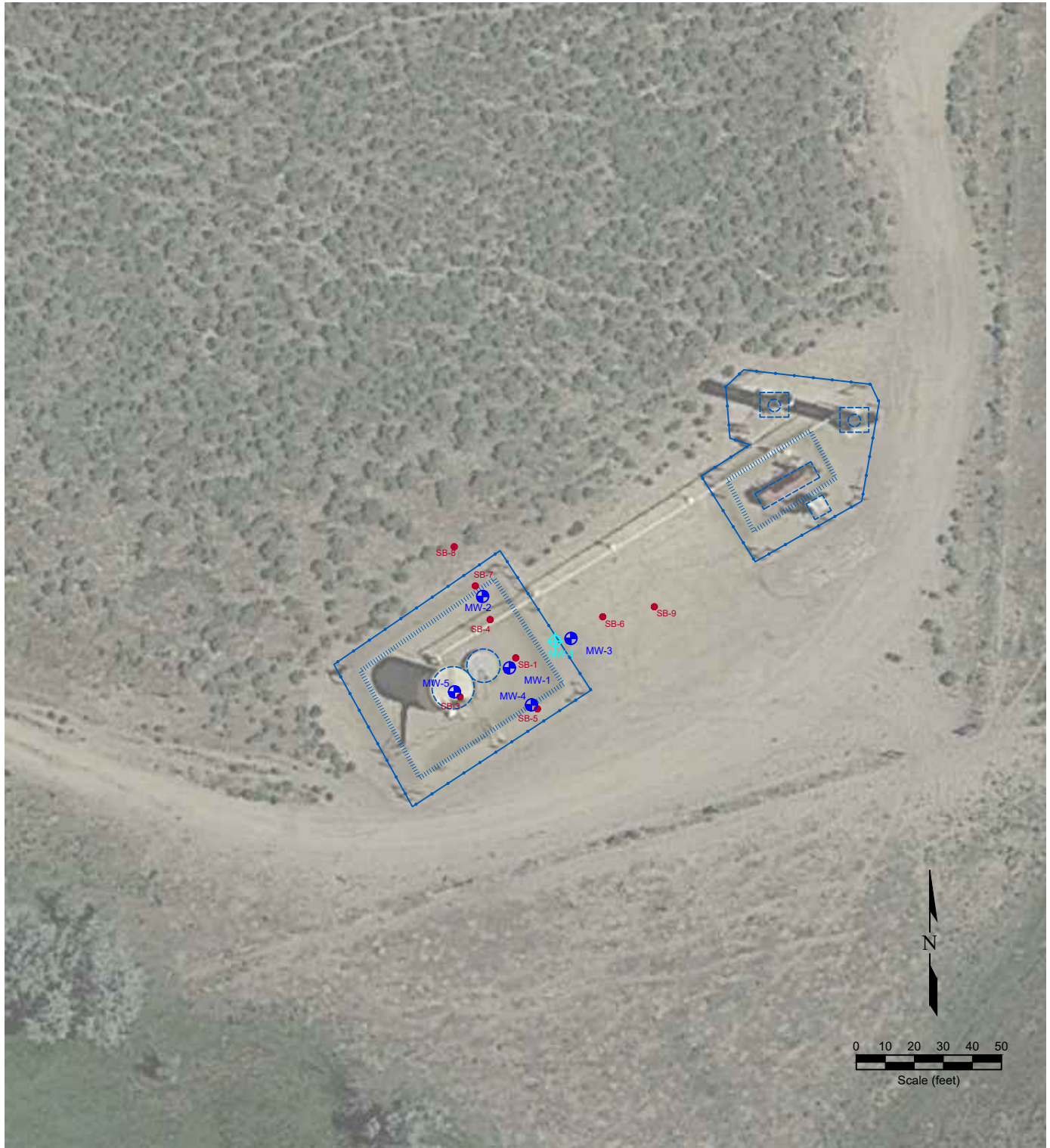
USGS 7.5 MINUTE SERIES (TOPOGRAPHIC)

Figure 1  
SITE LOCATION MAP

**NOBLE ENERGY INC - CORNELIUS-63N65W 11SWNW**  
 SWNW Sec. 11, T3N, R65W, 6th PM  
 Weld County, Colorado  
 40.243751°, -104.636822°

Project # <b>CO23-125</b>	API #	Facility # <b>332721</b>
Date <b>6/24/25</b>	Remediation # <b>28380</b>	Filename <b>23125T</b>





**LEGEND**

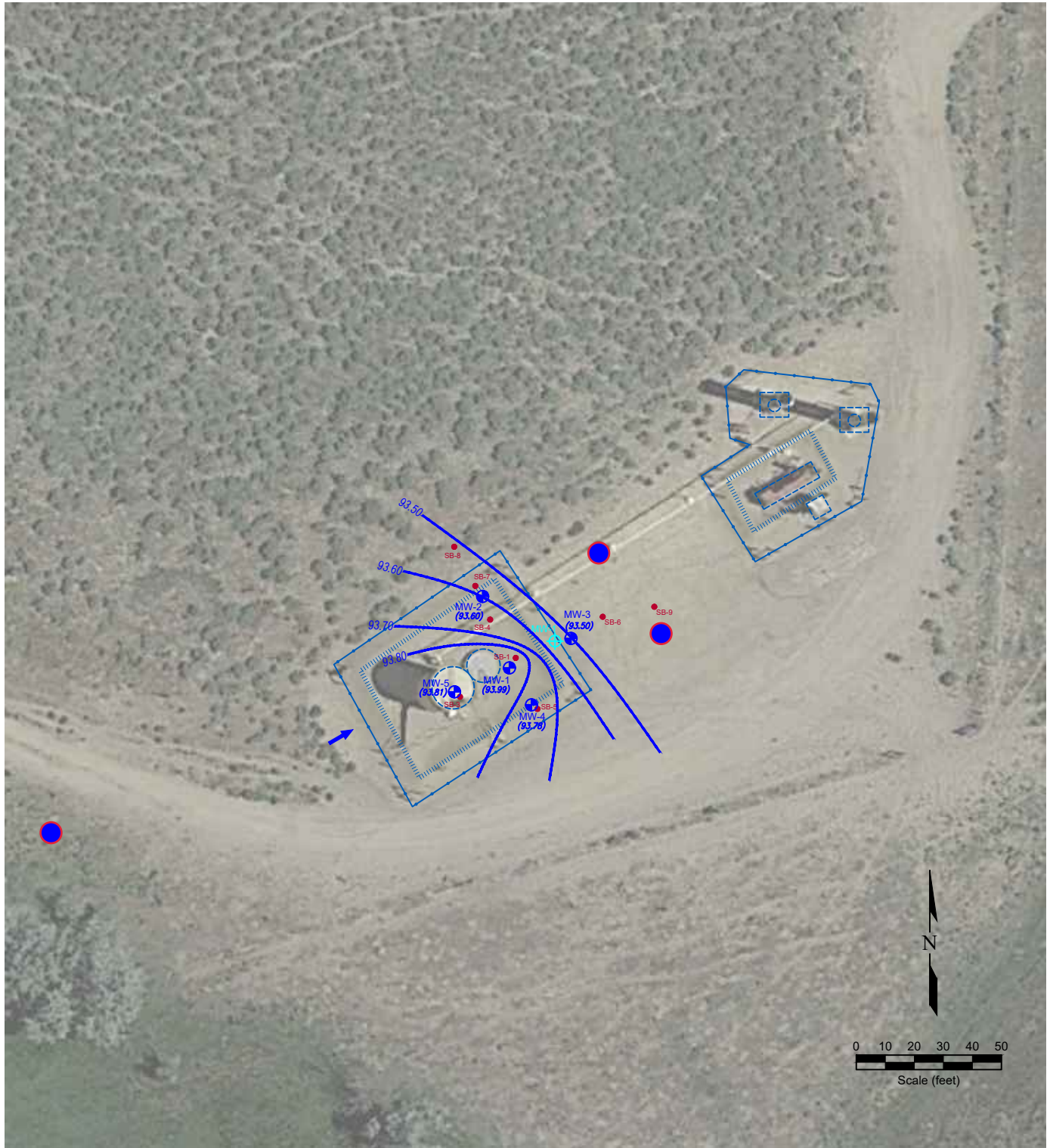
- SOIL BORING LOCATION
- ABOVE GROUND STORAGE TANK
- ⊕ MONITORING WELL LOCATION
- ⊕ DESTROYED MONITORING WELL
- FORMER FACILITY
- FENCE LINE
- CONTAINMENT BERM
- CONTAINMENT WALL

**Figure 2  
SITE MAP**

**NOBLE ENERGY INC - CORNELIUS-63N65W 11SWNW**  
 SWNW Sec. 11, T3N, R65W, 6th PM  
 Weld County, Colorado  
 40.243751°, -104.636822°

Project No. <b>CO23-125</b>	API #	Facility # <b>332721</b>
Date <b>6/24/25</b>	Remediation # <b>28380</b>	Filename <b>23125Q2</b>





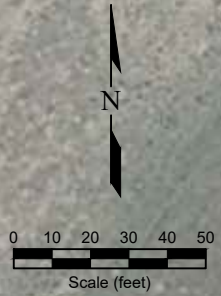
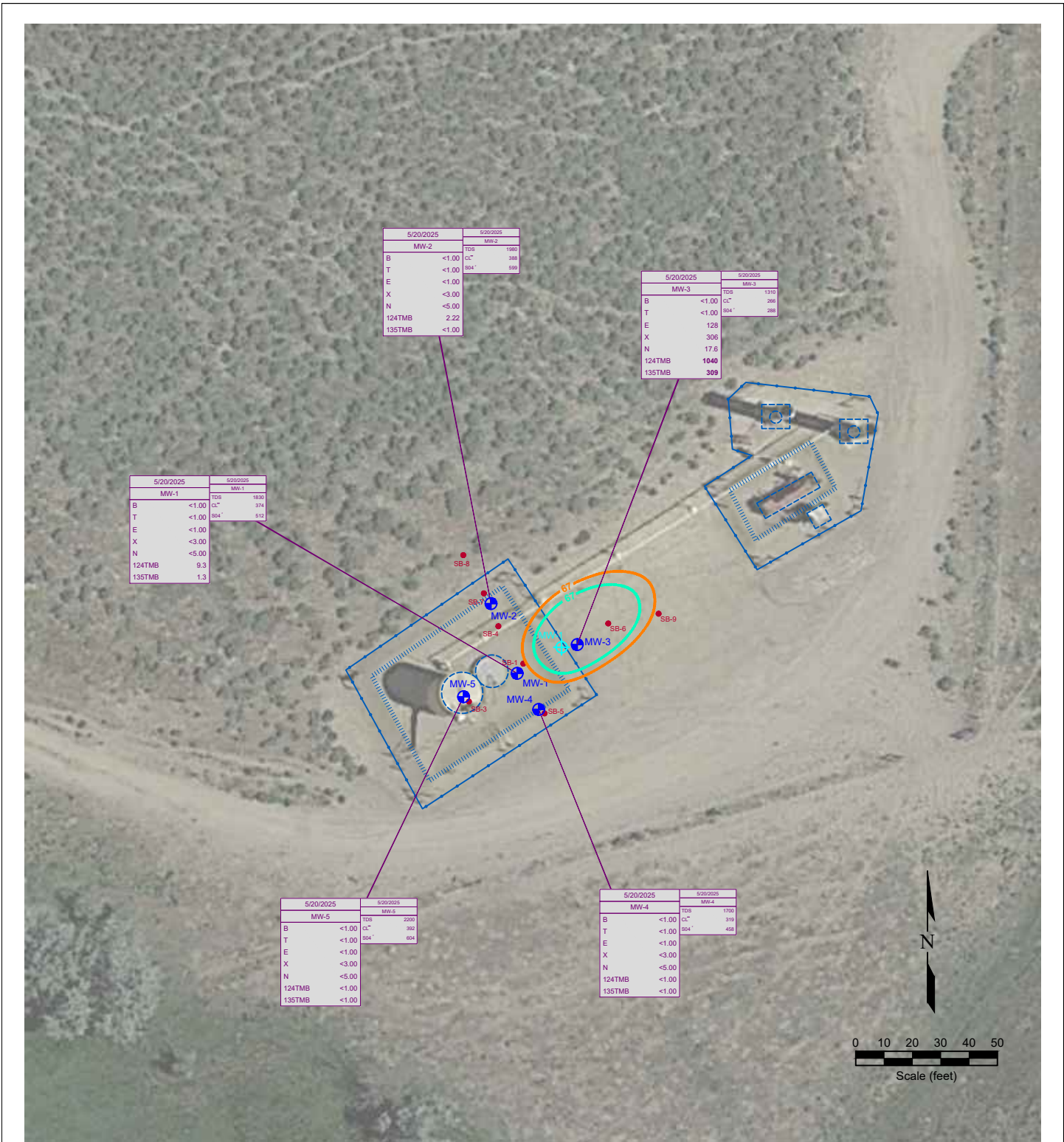
**LEGEND**

- SOIL BORING LOCATION
- ABOVE GROUND STORAGE TANK
- ⊕ MONITORING WELL LOCATION
- ⊕ DESTROYED MONITORING WELL
- FORMER FACILITY
- CONTAINMENT BERM
- CONTAINMENT WALL
- FENCE LINE
- Proposed Monitoring Wells
- GROUND WATER ELEVATION (ft above arbitrary datum)  
NOT MEASURED  
WATER TABLE CONTOUR
- GROUND WATER FLOW DIRECTION

Figure 3  
**INFERRED GROUNDWATER CONTOUR MAP**  
 May 20, 2025  
**NOBLE ENERGY INC - CORNELIUS-63N65W 11SWNW**  
 SWNW Sec. 11, T3N, R65W, 6th PM  
 Weld County, Colorado  
 40.243751°, -104.636822°

Project No. <b>CO23-125</b>	API #	Facility # <b>332721</b>
Date <b>6/24/25</b>	Remediation # <b>28380</b>	Filename <b>23125Q2</b>





**LEGEND**

- SOIL BORING LOCATION
- ⊕ MONITORING WELL LOCATION
- ⊕ DESTROYED MONITORING WELL
- ABOVE GROUND STORAGE TANK
- FORMER FACILITY
- FENCE LINE
- CONTAINMENT BERM
- CONTAINMENT WALL
- 1, 2, 4 TRIMETHYLBENZENE ISOCONCENTRATION (ug/L) (dashed where inferred)
- 1, 3, 5 TRIMETHYLBENZENE ISOCONCENTRATION (ug/L) (dashed where inferred)

5/20/2025		DATE SAMPLED
MW-1		5/20/2025
B	<1.00	BENZENE (ug/L)
T	<1.00	TOLUENE (ug/L)
E	<1.00	ETHYLBENZENE (ug/L)
X	<3.00	TOTAL XYLENES (ug/L)
N	<5.00	NAPHTHALENE (ug/L)
124TMB	9.3	1,2,4-TRIMETHYLBENZENE (ug/L)
135TMB	1.3	1,3,5-TRIMETHYLBENZENE (ug/L)

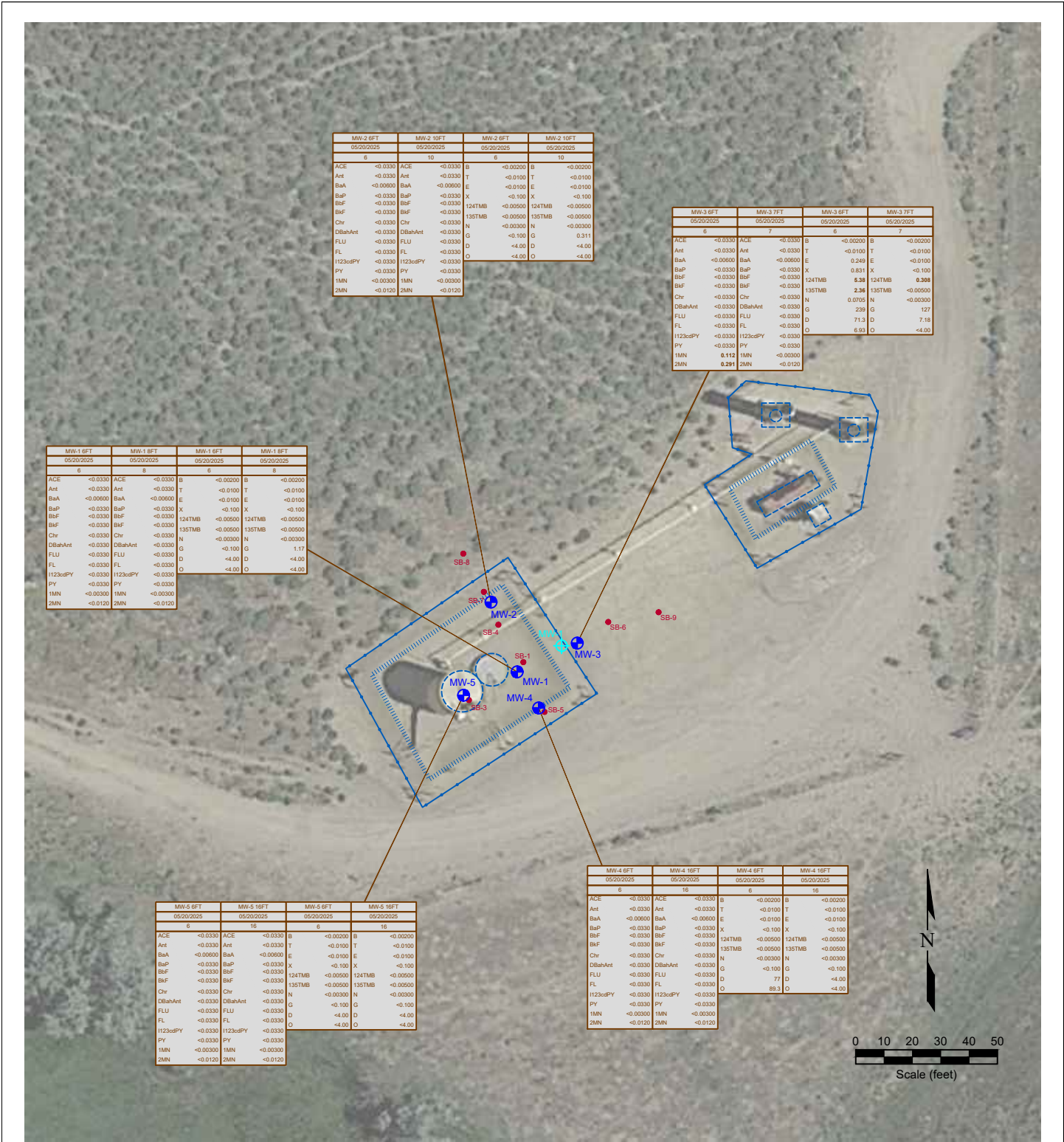
5/20/2025		DATE SAMPLED
MW-3		5/20/2025
TDS	1310	TOTAL DISSOLVED SOLIDS (mg/L)
CL <sup>-</sup>	266	CHLORIDE ION (mg/L)
SO <sub>4</sub> <sup>-2</sup>	288	SULFATE ION (mg/L)

Figure 4  
**GROUNDWATER CHEMISTRY MAP**

**NOBLE ENERGY INC - CORNELIUS-63N65W 11SWNW**  
 SWNW Sec. 11, T3N, R65W, 6th PM  
 Weld County, Colorado  
 40.243751°, -104.636822°

Project No. <b>CO23-125</b>	API #	Facility # <b>332721</b>
Date <b>6/24/25</b>	Remediation # <b>28380</b>	Filename <b>23125Q2</b>





**LEGEND**

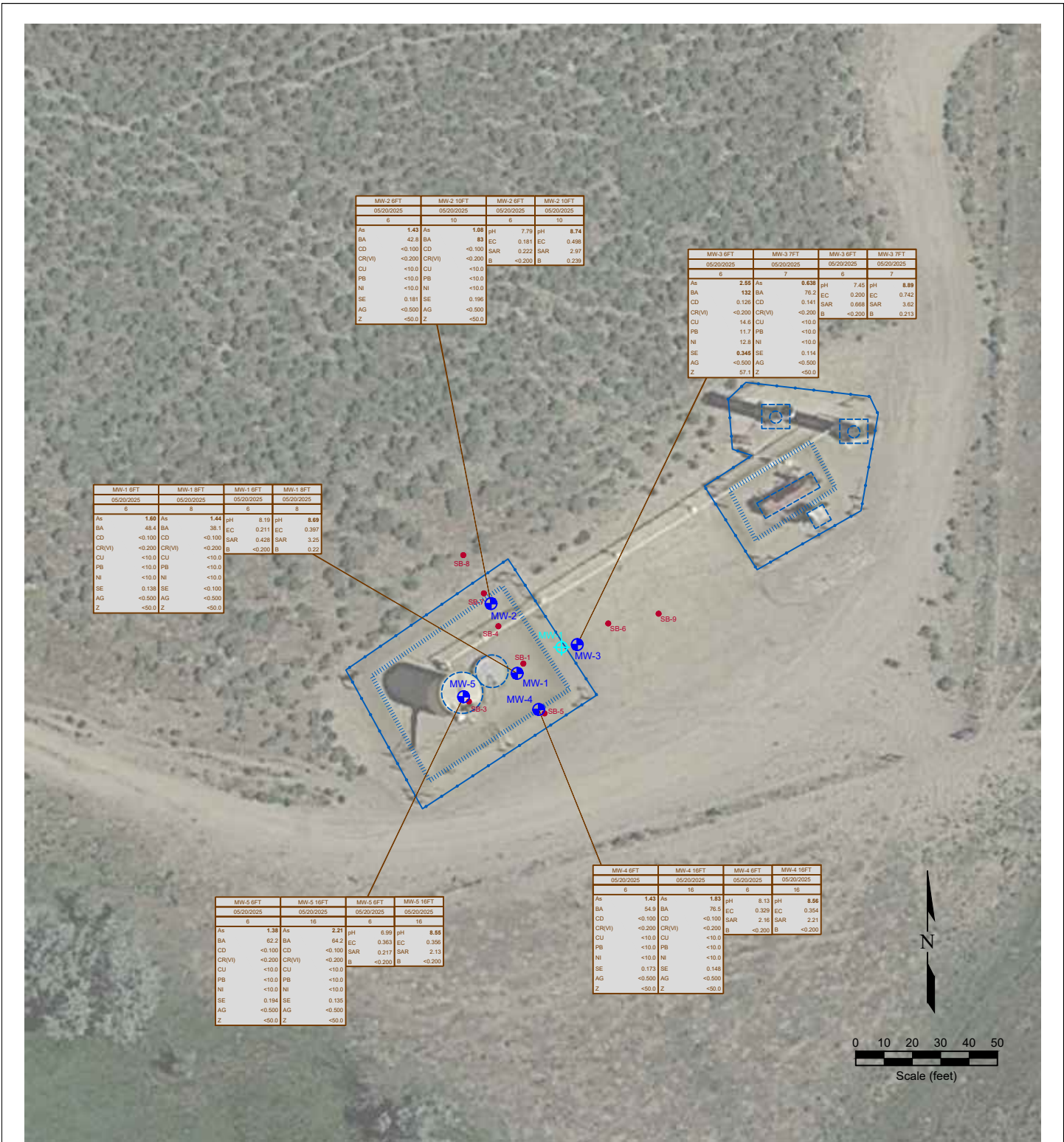
- SOIL BORING LOCATION
- ABOVE GROUND STORAGE TANK
- FORMER FACILITY
- FENCE LINE
- ▬ CONTAINMENT BERM
- ▬ CONTAINMENT WALL
- MONITORING WELL LOCATION
- ⊕ DESTROYED MONITORING WELL

SAMPLE ID	SAMPLE ID	SAMPLE ID	SAMPLE ID
DATE	DATE SAMPLED	DATE	DATE SAMPLED
DEPTH	DEPTH (ft)	DEPTH	DEPTH (ft)
ACE	<0.00000	ACRANTHRENE (mg/kg)	
Ant	<0.00000	ANTHRACENE (mg/kg)	
BaA	<0.00000	BENZO (A) ANTHRACENE (mg/kg)	
BaP	<0.00000	BENZO (A) PYRENE (mg/kg)	
BbF	<0.00000	BENZO (B) FLUORANTHRENE (mg/kg)	
BkF	<0.00000	BENZO (K) FLUORANTHRENE (mg/kg)	
Chr	<0.00000	CHRYSENE (mg/kg)	
DBahAnt	<0.00000	DIBENZ (A,H) ANTHRACENE (mg/kg)	
FLU	<0.00000	FLUORANTHRENE (mg/kg)	
FL	<0.00000	FLUORENE (mg/kg)	
H123cdPY	<0.00000	HEXEN (1,2,3-CD) PYRENE (mg/kg)	
PY	<0.00000	PYRENE (mg/kg)	
1MN	<0.00000	1-METHYLNAPHTHALENE (mg/kg)	
2MN	<0.00000	2-METHYLNAPHTHALENE (mg/kg)	
B	<0.00200	BENZENE (mg/kg)	
T	<0.00500	TOLUENE (mg/kg)	
E	<0.00500	ETHYLBENZENE (mg/kg)	
X	<0.0100	TOTAL XYLENES (mg/kg)	
124TMB	<0.00500	1,2,4-TRIMETHYLBENZENE (mg/kg)	
135TMB	<0.00500	1,3,5-TRIMETHYLBENZENE (mg/kg)	
N	<0.00300	NAPHTHALENE (mg/kg)	
G	<0.00300	TPH-CRO (mg/kg)	
D	<0.00300	TPH-ORO (mg/kg)	
O	<0.00300	TPH-ORO (mg/kg)	

**Figure 5**  
**ORGANIC SOIL CHEMISTRY MAP**

**NOBLE ENERGY INC - CORNELIUS-63N65W 11SWNW**  
 SWNW Sec. 11, T3N, R65W, 6th PM  
 Weld County, Colorado  
 40.243751° , -104.636822°

Project No. <b>CO23-125</b>	API #	Facility # <b>332721</b>
Date <b>6/24/25</b>	Remediation # <b>28380</b>	Filename <b>23125Q2</b>



**LEGEND**

- SOIL BORING LOCATION
- ABOVE GROUND STORAGE TANK
- ⊕ MONITORING WELL LOCATION
- ⊕ DESTROYED MONITORING WELL
- FENCE LINE
- FORMER FACILITY
- CONTAINMENT BERM
- CONTAINMENT WALL

SAMPLE	SAMPLE ID	SAMPLE DATE	SAMPLE DATE	SAMPLE DATE	SAMPLE DATE
DATE	DEPTH (ft)	DEPTH (ft)	DEPTH (ft)	DEPTH (ft)	DEPTH (ft)
As	<0.01	ARSENIC (mg/kg)	pH	<50.0	pH (pH units)
BA	<0.01	BARIUM (mg/kg)	EC	7.00	EC (mmhos/cm)
CD	<0.01	CADMIUM (mg/kg)	SAR	<1	SAR (units)
CR(VI)	<0.05	CHROMIUM (mg/kg)	B	<1	BORON (mg/L)
CU	<0.01	COPPER (mg/kg)			
PB	<0.05	LEAD (mg/kg)			
NI	<0.05	NICKEL (mg/kg)			
SE	<0.5	SELENIUM (mg/kg)			
AG	<0.05	SILVER (mg/kg)			
Z	<0.05	ZINC (mg/kg)			

**Figure 6**  
**METALS AND INORGANIC SOIL CHEMISTRY MAP**  
**NOBLE ENERGY INC - CORNELIUS-63N65W 11SWNW**  
 SWNW Sec. 11, T3N, R65W, 6th PM  
 Weld County, Colorado  
 40.243751°, -104.636822°

Project No. <b>CO23-125</b>	API #	Facility # <b>332721</b>
Date <b>6/24/25</b>	Remediation # <b>28380</b>	Filename <b>23125Q2</b>