



**SECTOR CEMENT BOND  
GAMMA RAY  
CCL LOG**

Comp. OCCIDENTAL PETROLEUM CORP.  
Well GOBBLER 37N-E22HZ  
Field WATTENBURG  
Co. WELD  
State CO

Company **OCCIDENTAL PETROLEUM CORP.**  
Well **GOBBLER 37N-E22HZ**  
Field **WATTENBURG**  
County **WELD** State **CO**

Location: **400' FNL & 1980' FEL** API #: 05-123-34827  
SEC 22 TWP 2N RGE 66W  
PERF

Permanent Datum GL Elevation 5052'  
Log Measured From KB 16' Above Perm. Datum  
Drilling Measured From KB G.L. 5052'

Date of Service	20-MAY-2025						
Run Number	ONE						
Depth Driller or PBTD	11,741'						
Depth Logger	2100'						
Bottom Log Interval	2100'						
Top Log Interval	SURFACE						
Open Hole Size	8-3/4"						
Type Fluid	H2O						
Fluid Level	SURFACE						
Fluid Density	8.33 LB/GAL						
Max. Recorded Temperature	NA						
Max. Wellhead Pressure	2500 PSI						
Wellhead Connection	5K						
Estimated Cement Top	1370'						
Unit Number	L172458						
Wireline Size	1/4"						
Location	BRIGHTON						
Recorded By	C. SHEPPARD						
Witnessed By	J. CASTILLO						
Surface Casing	9-5/8"	WFt	36#	Top	SURFACE	Bottom	1008'
Production Casing	7"	WFt	26#	Top	SURFACE	Bottom	7738'
Liner Casing							
Tubing Record							

<<< Fold Here >>>

All interpretations are opinions based on inferences from electrical or other measurements and Ranger Energy Services cannot and does not guarantee the accuracy or correctness of any interpretation, and Ranger Energy Services will not be liable or responsible for any loss, costs, damages, or expenses incurred or sustained by anyone resulting from any interpretation made by any of our officers, agents or employees.

**Comments**

N/A DENOTES NOT AVAILABLE OR NON-APPLICABLE.  
LOG CORRELATED TO KB

2500 PSI APPLIED @ SURFACE

THANK YOU FOR USING RANGER ENERGY SERVICES!

THANK YOU FOR USING RANGER ENERGY SERVICES! FIELD TICKET #

Your Ranger Energy Services Crew	Tool Data - Services	Serial Number
Engineer: C. SHEPPARD Operator: E. CARRANZA Operator: A. FERGUSON Operator:		

Operator	Offset (ft)	Schematic	Description	Length (ft)	O.D. (in)	Weight (lb)
----------	-------------	-----------	-------------	-------------	-----------	-------------

Sensor	Offset (ft)	Schematic	Description	Length (ft)	O.D. (in)	Weight (lb)	
ErrCt	23.33		Cable_Head-1_7/16 Titan 1 7/16" Cable Head	1.02	1.44	3.31	
			Centralizers-Sondex PRC 2.75" Roller Centralizers Tekco 2 3/4" Adjustable Centralizer	3.00	2.75	25.00	
IntTemp	18.07						
WVFS8	14.82			RBT-Probe (070150) Probe Radii Bond Tool with Digital Telemetry	8.75	2.75	90.00
WVFS7	14.82						
WVFS6	14.82						
WVFS5	14.82						
WVFS4	14.82						
WVFS3	14.82						
WVFS2	14.82						
WVFS1	14.82						
WVFCAL	14.82						
WVF3FT	14.82						
WVF5FT	13.82						
			Centralizers-Sondex PRC 2.75" Roller Centralizers Tekco 2 3/4" Adjustable Centralizer	3.00	2.75	25.00	
CCL	6.62						
GR	5.38		GR_analog-GR275B (071129) 275 Gamma-CCL (Pulse) Top Detector	4.57	2.75	55.00	
			Centralizers-8071-275-200 Tekco 2 3/4" Adjustable Centralizer	2.73	2.75	25.00	
			Bull_Plug-1_7/16_GO Titan 1 7/16" Female Bull Plug	0.27	1.44	1.00	

Dataset: 993216\_occidental\_gobbler37n-e22hz\_0512334827\_20250520\_scbl.db: field/well/run1/pass4  
 Total length: 23.33 ft  
 Total weight: 224.31 lb  
 O.D.: 2.75 in

# Log Variables

DatabaseC:\ProgramData\Warrior\Data\993216\_occidental\_gobbler37n-e22hz\_0512334827\_20250  
Dataset field/well/run1/pass4/\_vars\_

## Top - Bottom

BOREID in 6.276	BOTTEMP degF 100	CASEOD in 7	CASETHCK in 0.362	CASEWGHT lb/ft 26	MAXAMPL mV 62.2	MINAMPL mV 1.8	MINATTN db/ft 9
PERFS No	PPT usec 286	SRFTEMP degF 50	TDEPTH ft 2000				

## Variable Description

BOREID : Borehole I.D.  
BOTTEMP : Bottom Hole Temperature  
CASEOD : Casing O.D.  
CASETHCK : Casing Thickness

CASEWGHT : Casing Weight  
MAXAMPL : Maximum Amplitude  
MINAMPL : Minimum Amplitude  
MINATTN : Minimum Attenuation

PERFS : Perforation Flag  
PPT : Predicted Pipe Time  
SRFTEMP : Surface Temperature  
TDEPTH : Total Depth

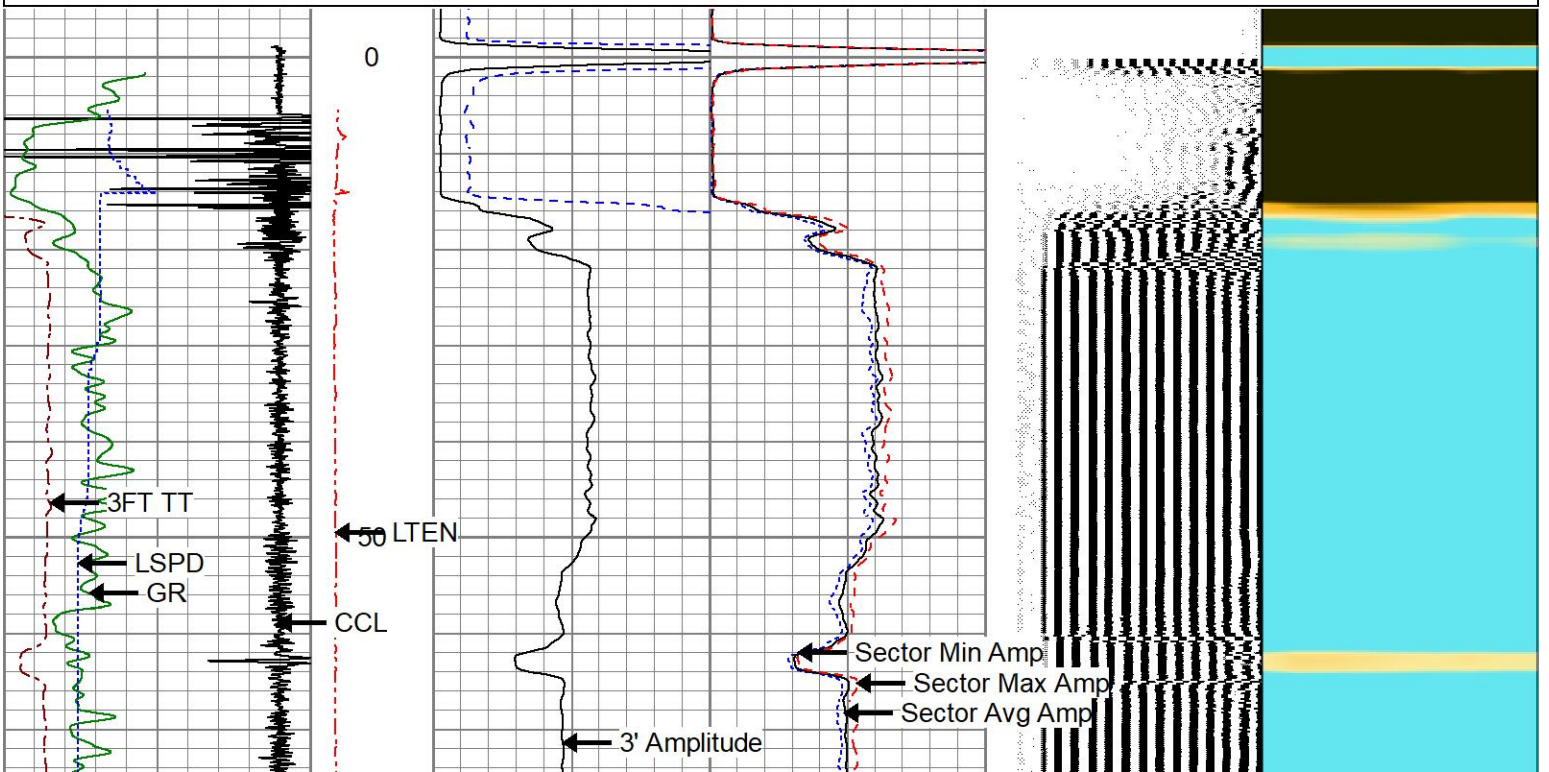


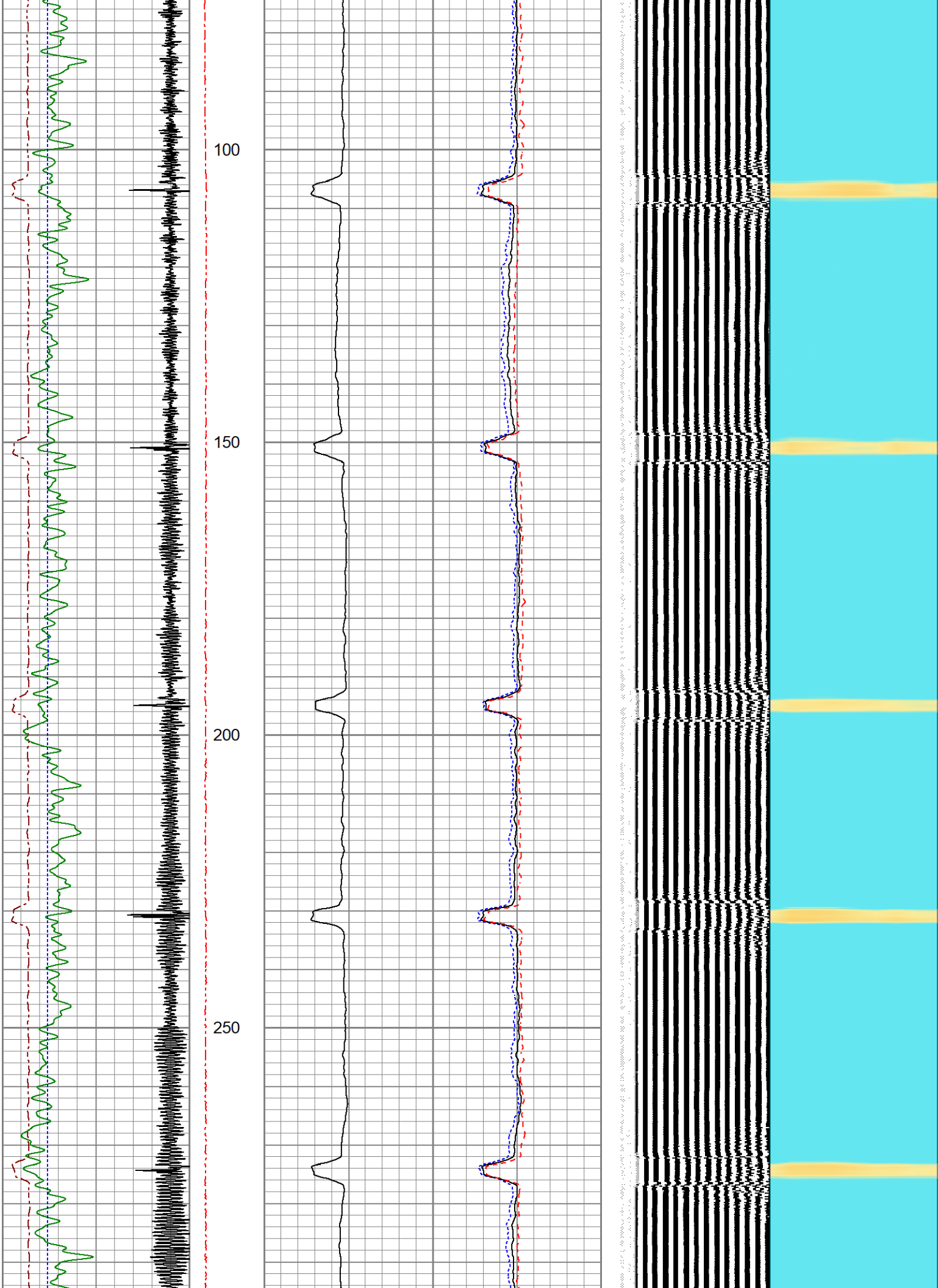
## MAIN PASS

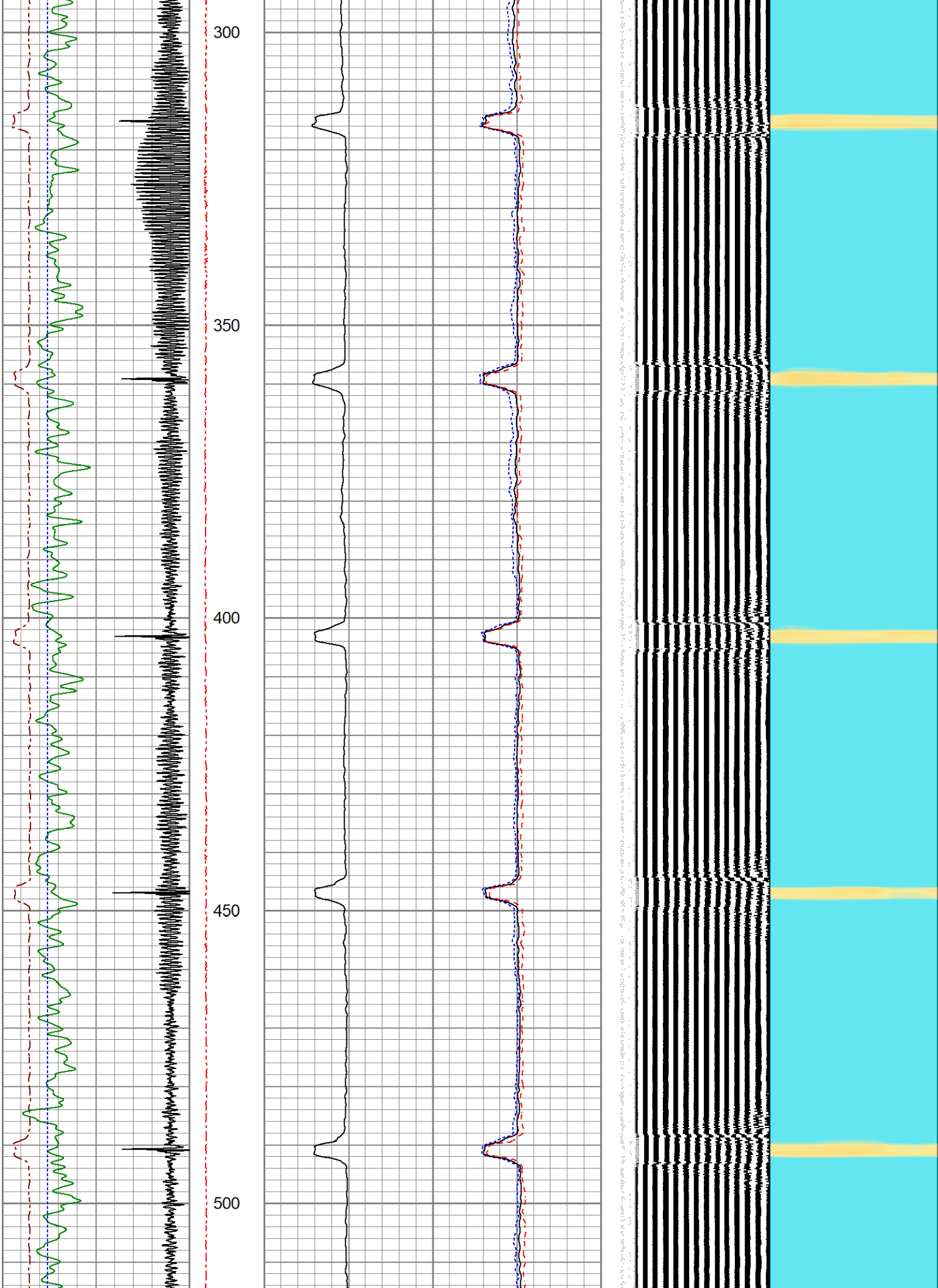
2500 PSI APPLIED AT SURFACE

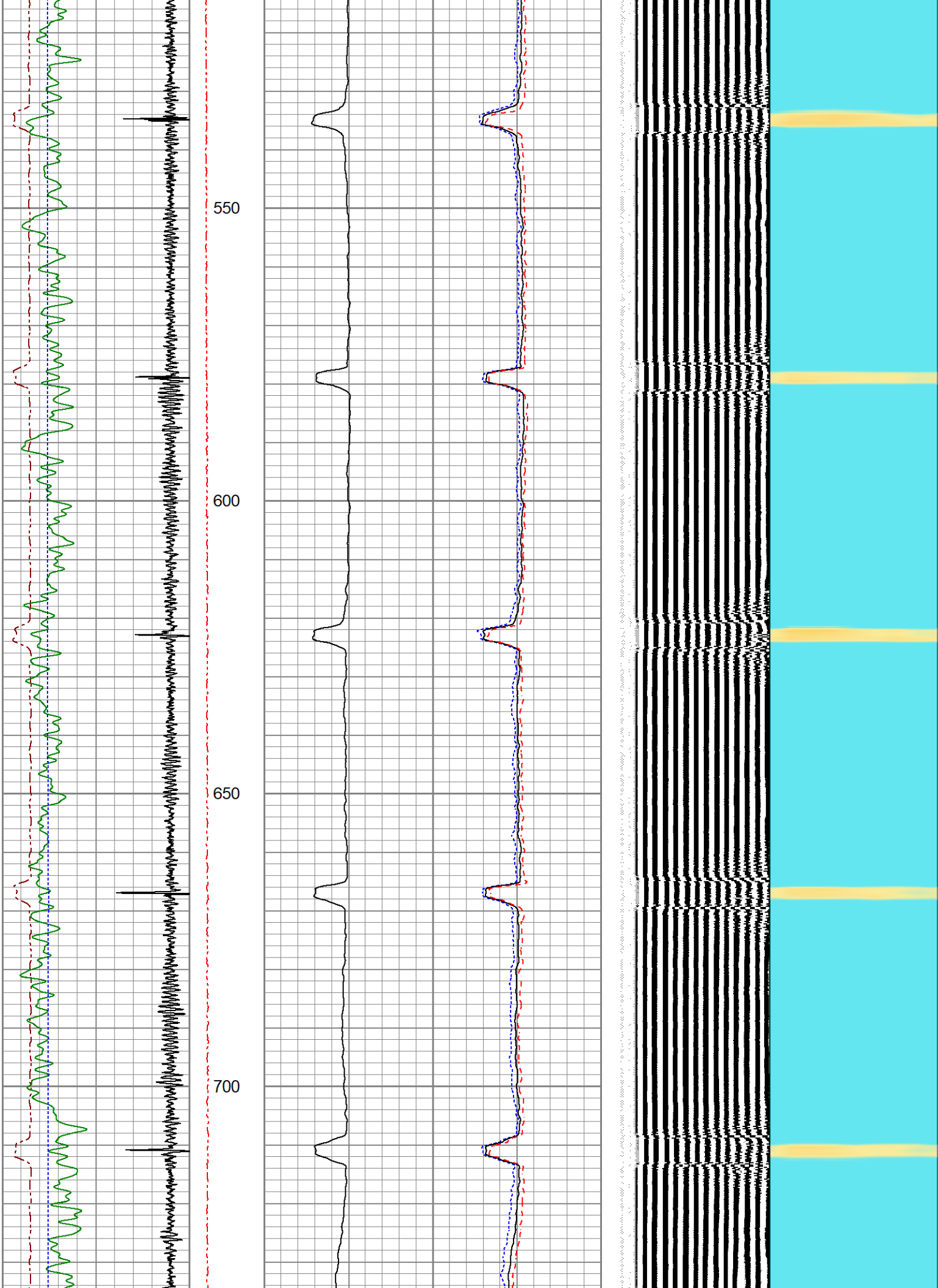
Database File 993216\_occidental\_gobbler37n-e22hz\_0512334827\_20250520\_scbl.db  
Dataset Pathname pass4  
Presentation Format res\_scbl 8sec-gr-ccl  
Dataset Creation Tue May 20 09:29:10 2025  
Charted by Depth in Feet scaled 1:240

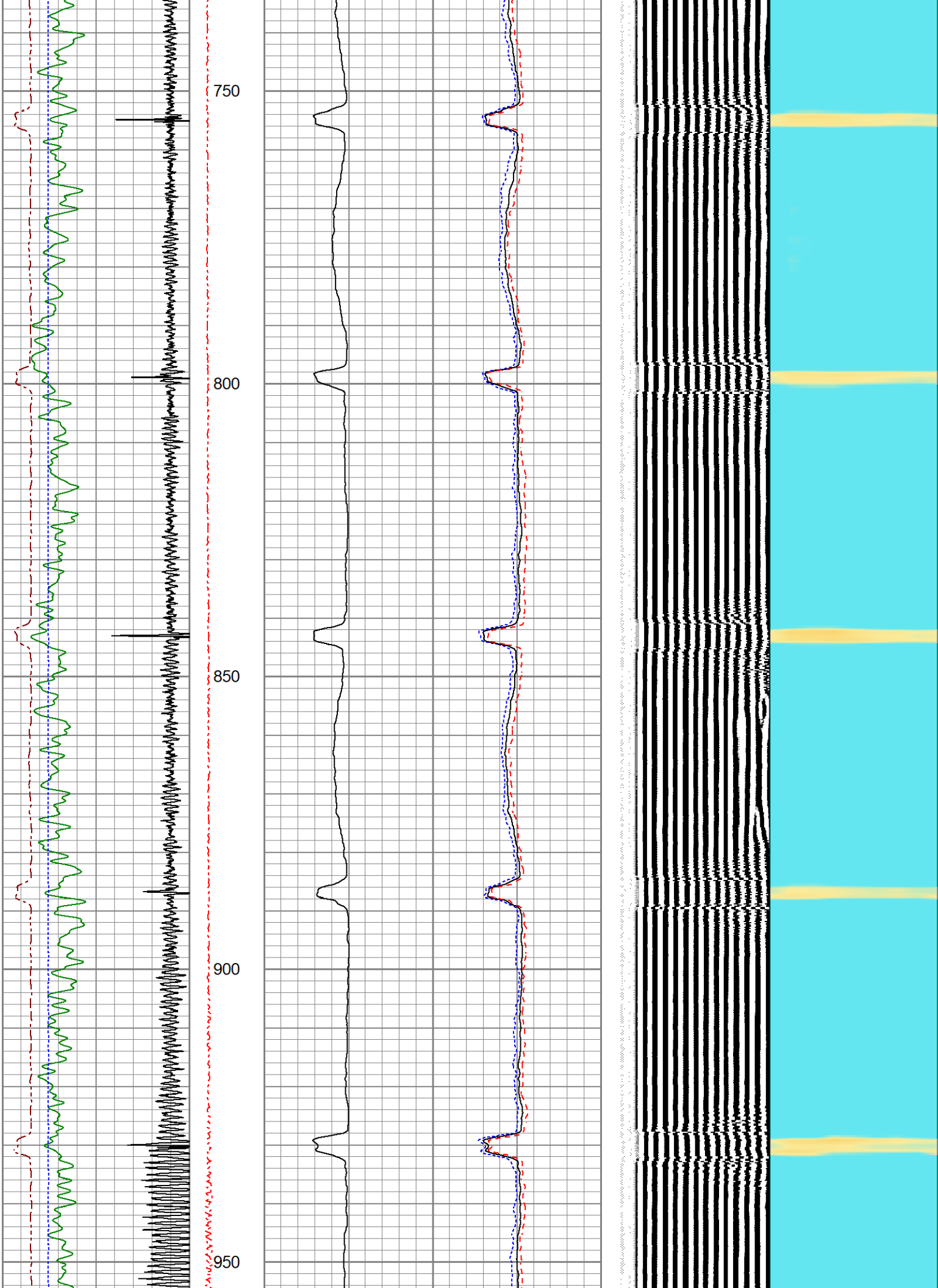
300 3FT TT (usec) 200	LTEN	3' Amplitude	0 Sector Min Amp 150	200 VDL (usec) 1200	1 Sector Map 8
-9 CCL 1	(lb)	(mV) 100	Sector Avg Amp		
0 GR (GAPI) 150	0 2000	3' Amplified	0 150		
-150 LSPD (ft/min) 150		Amplitude X 5	Sector Max Amp		
		(mV) 20	0 150		

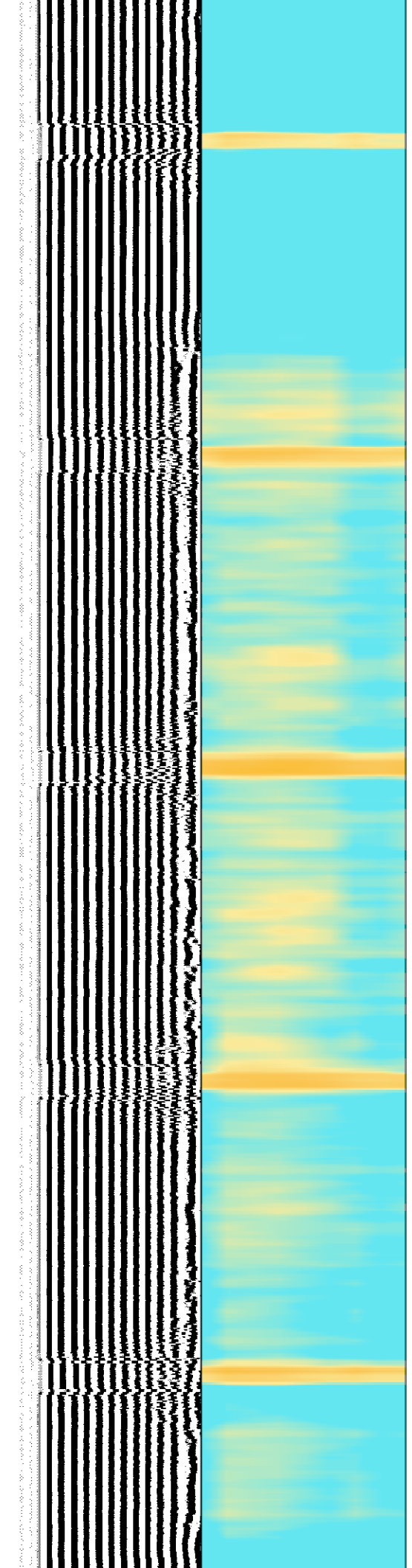
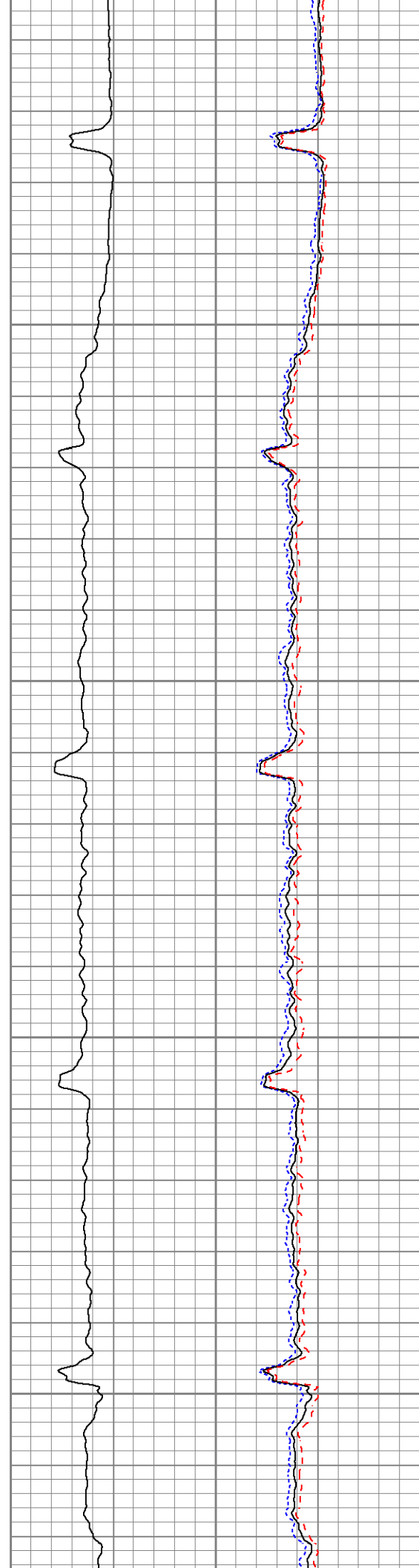
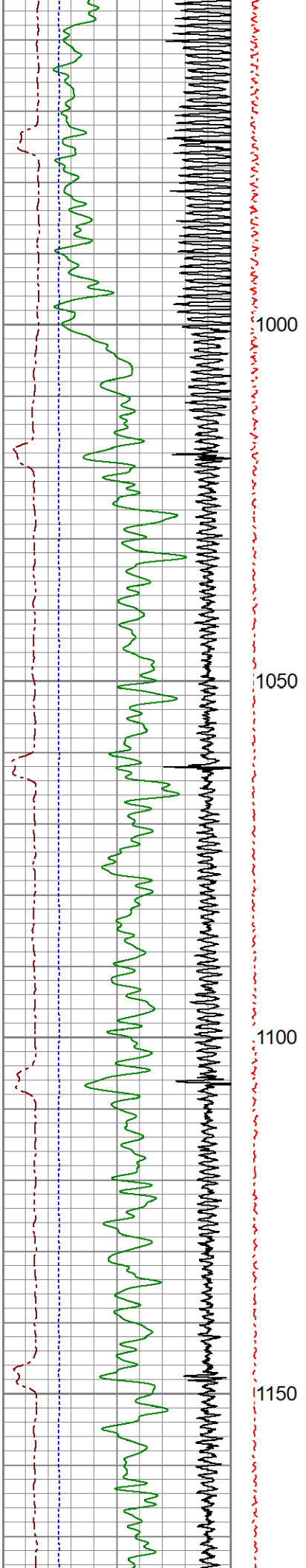


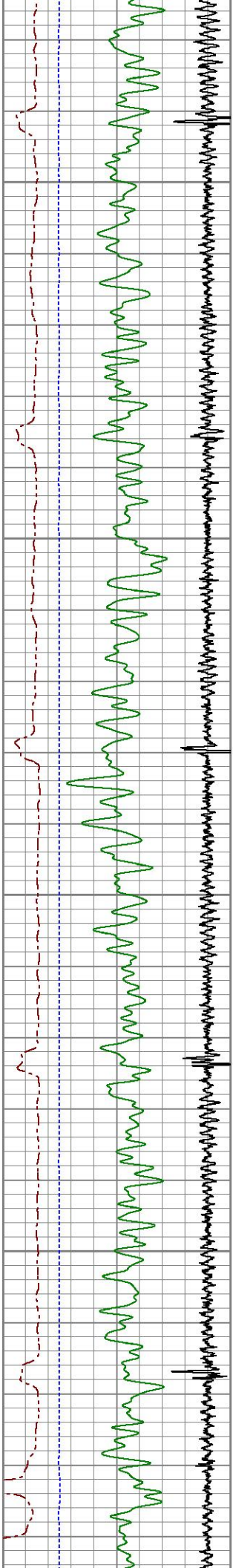










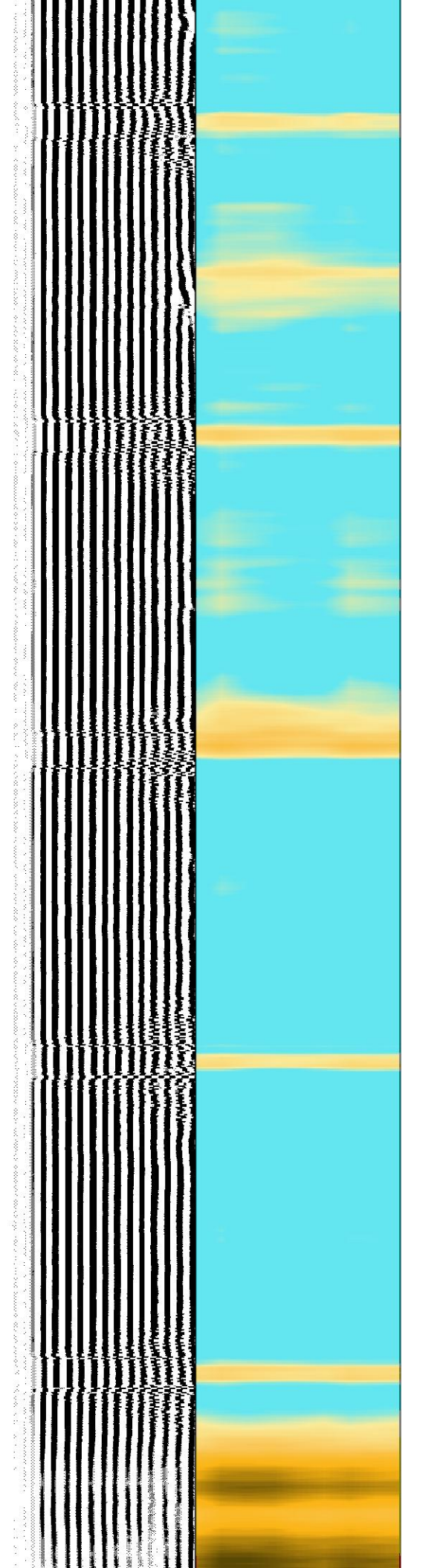
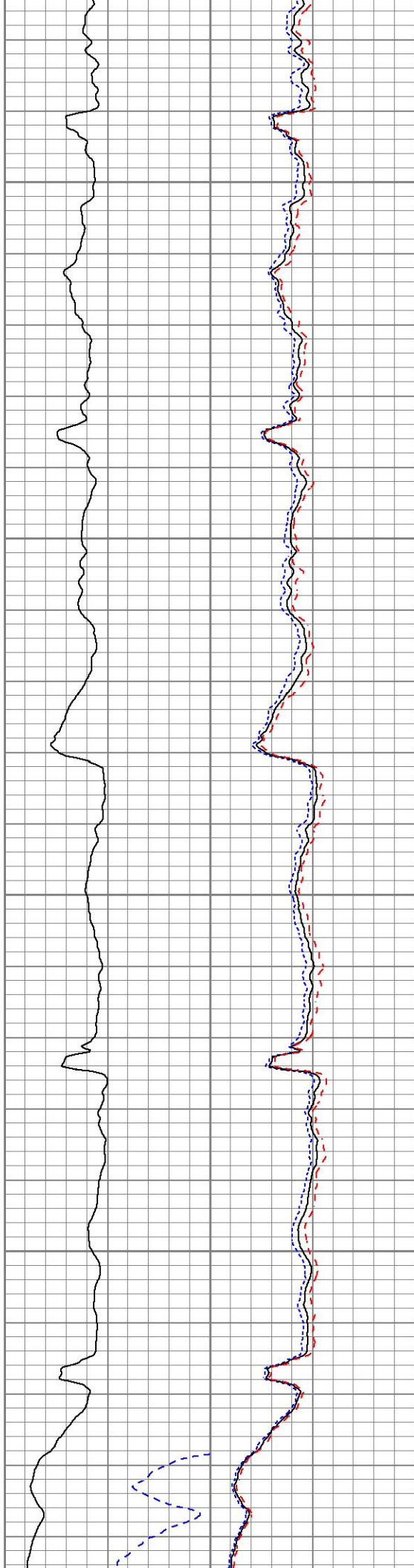


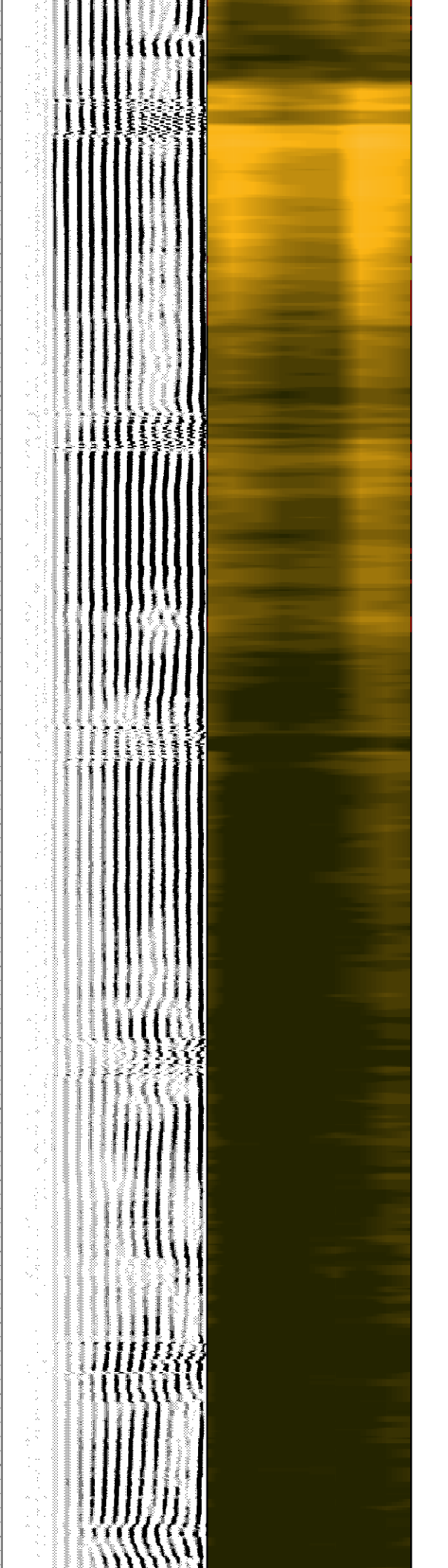
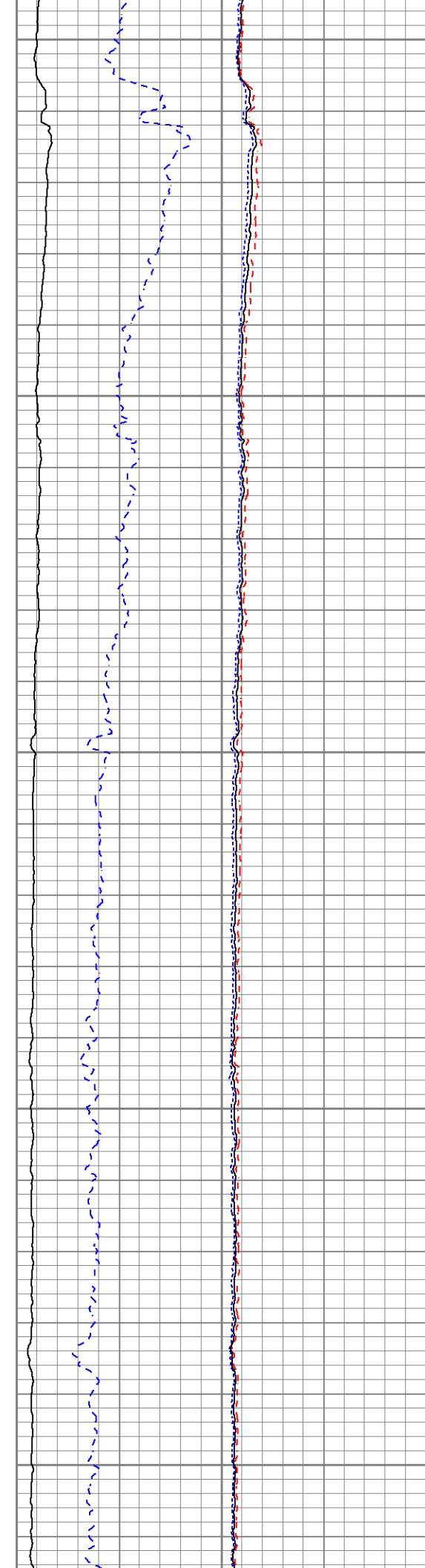
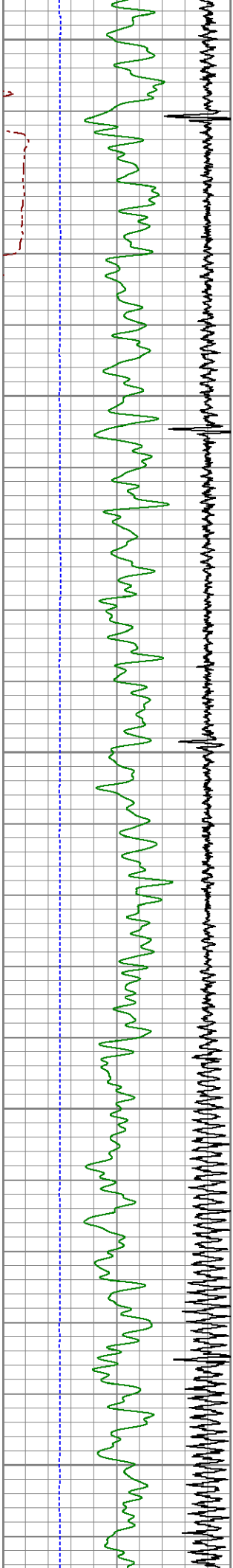
1200

1250

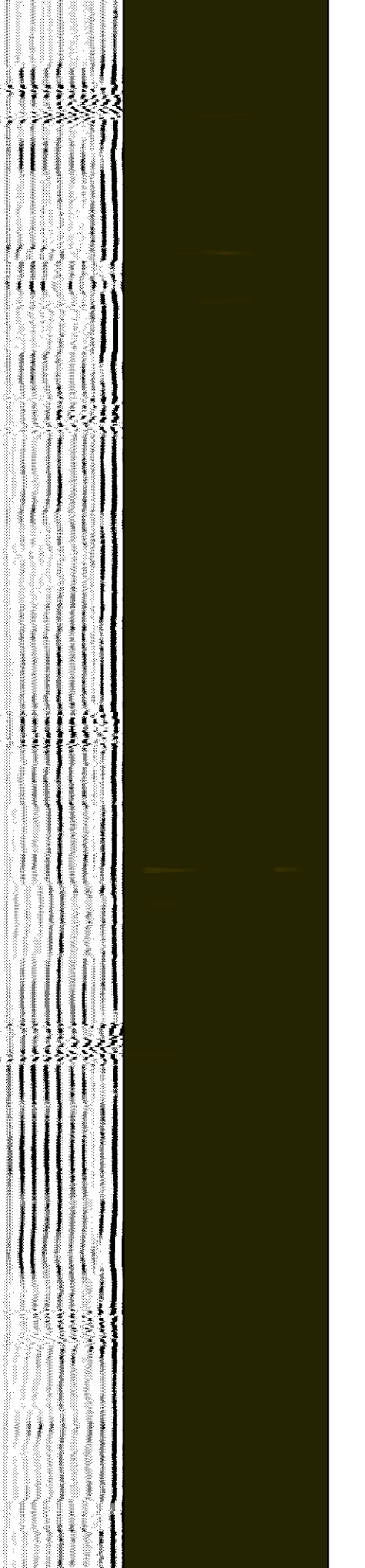
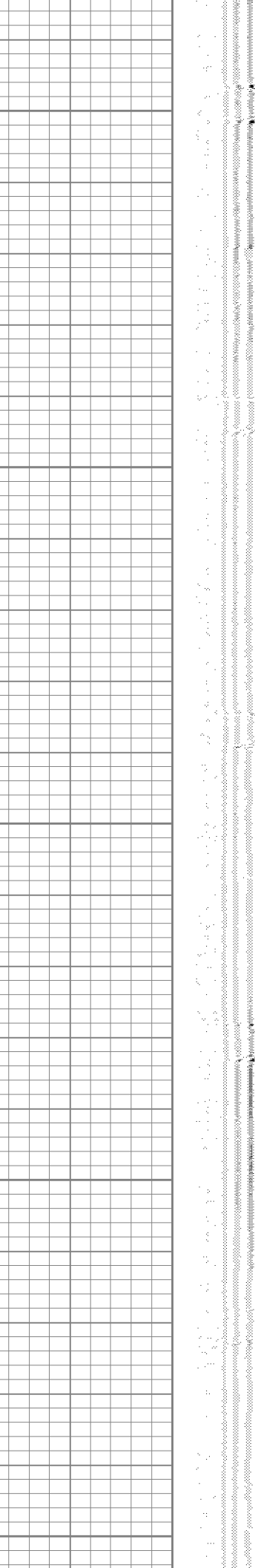
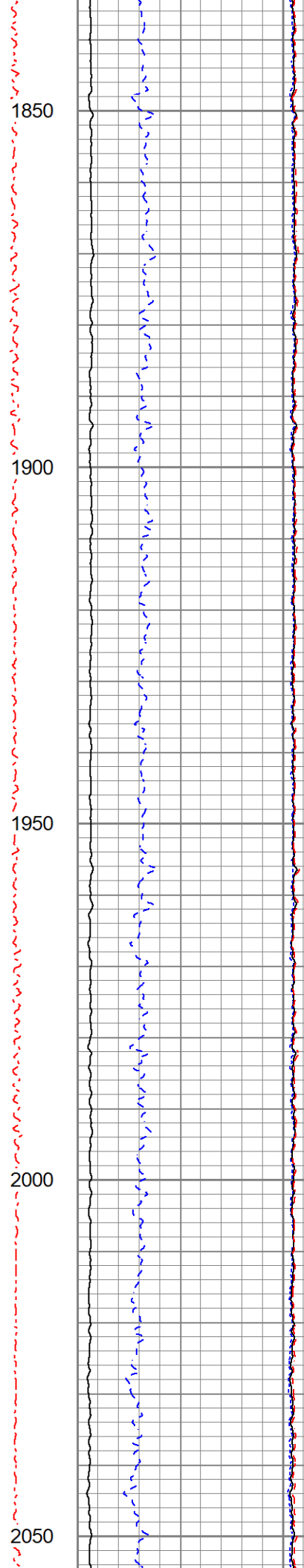
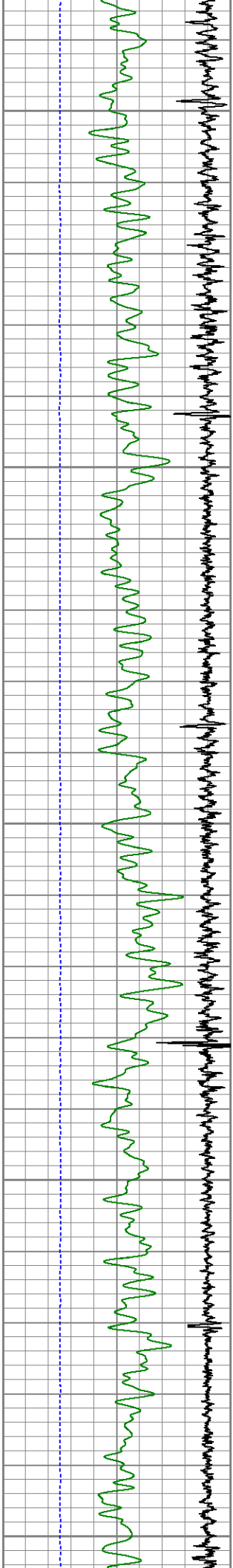
1300

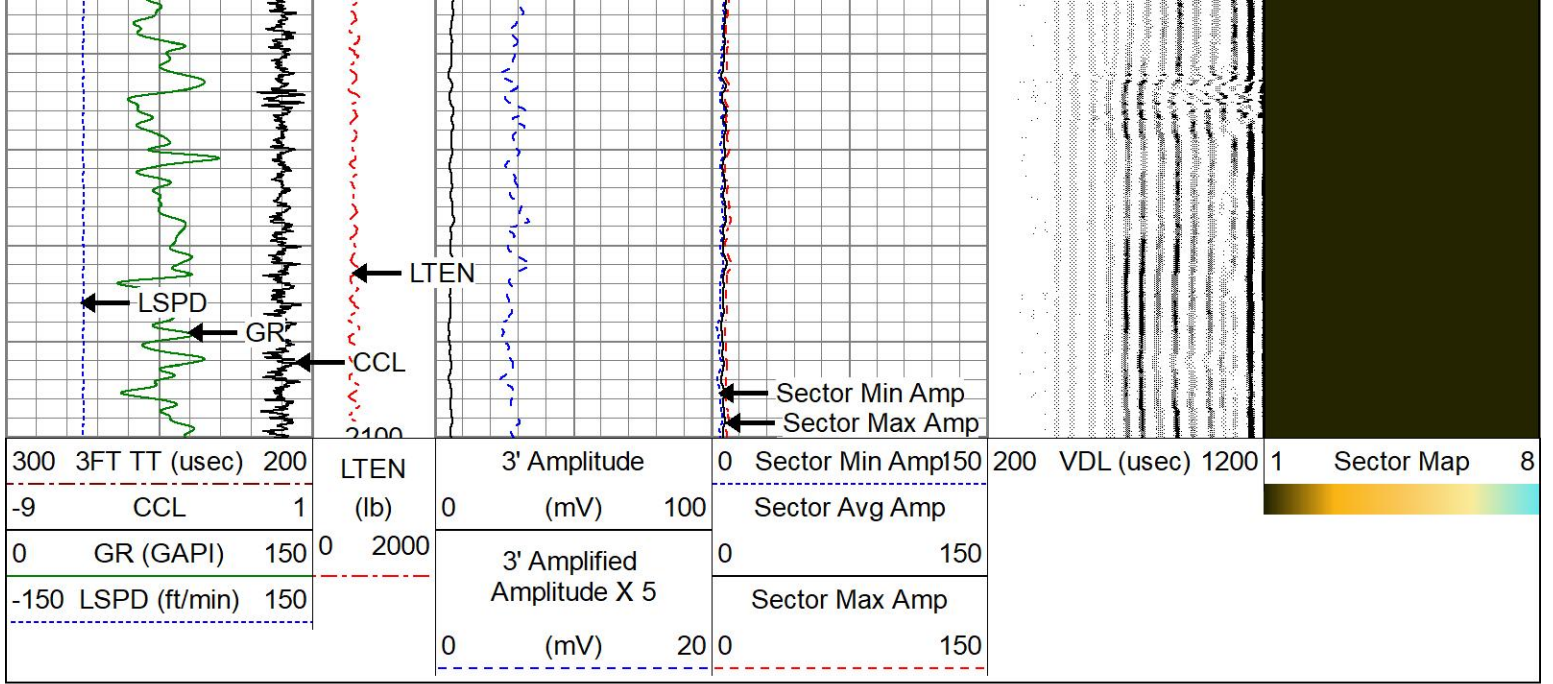
1350







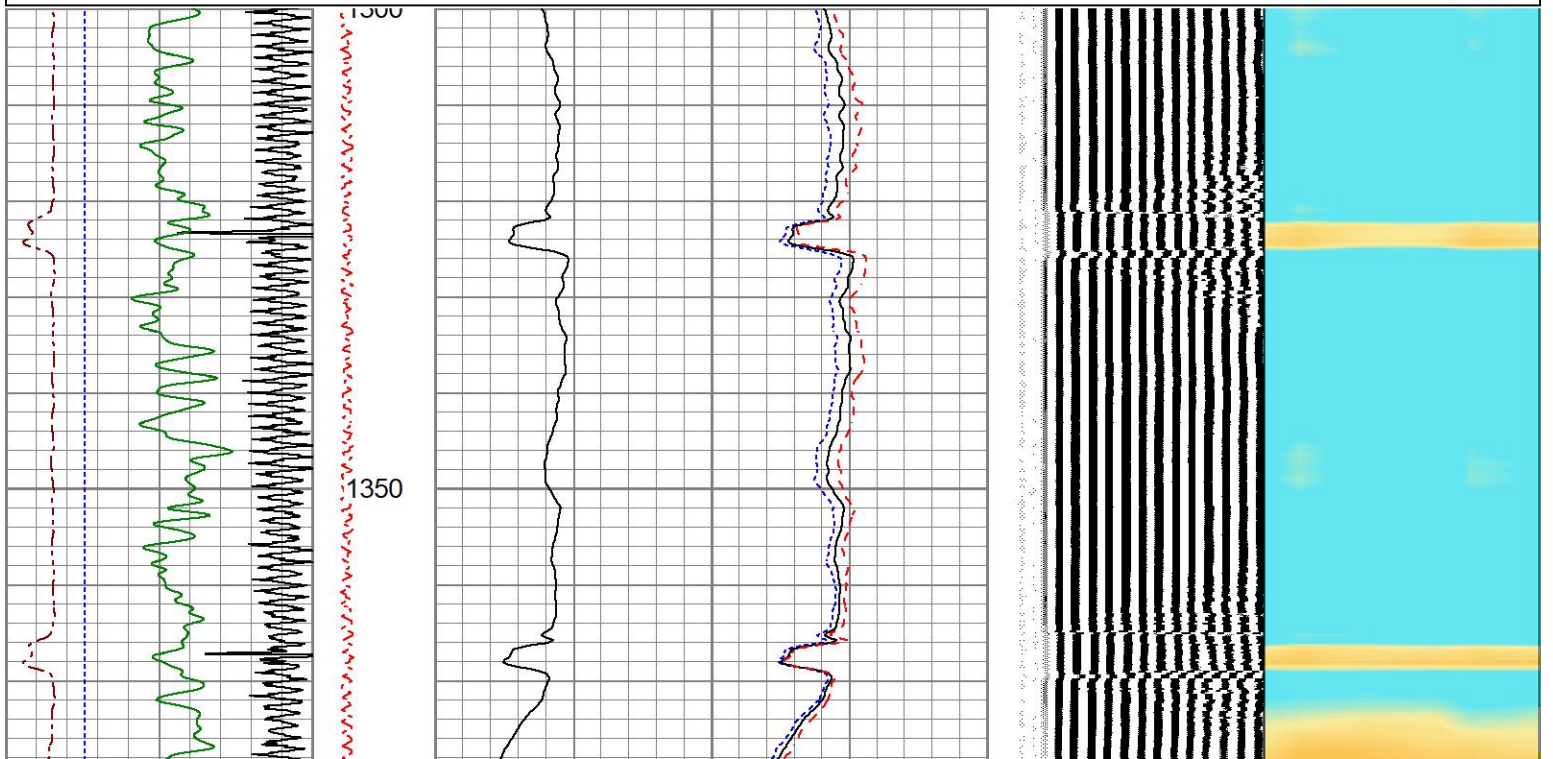
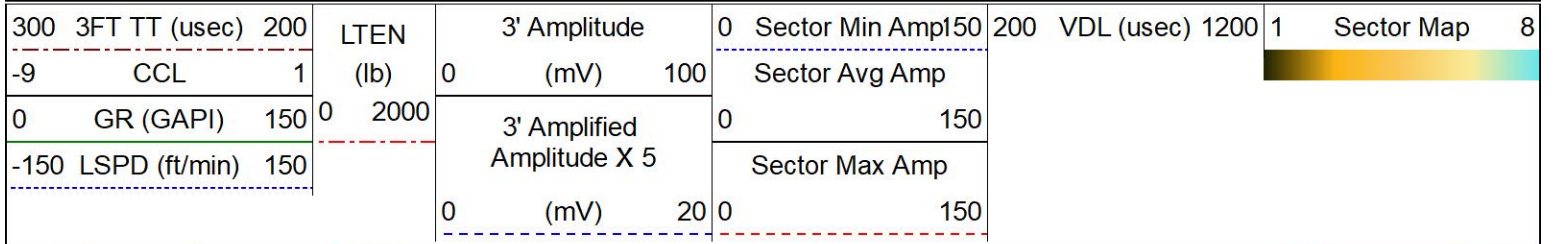




## REPEAT PASS

2500 PSI APPLIED AT SURFACE

Database File 993216\_occidental\_gobbler37n-e22hz\_0512334827\_20250520\_scbl.db  
 Dataset Pathname pass2  
 Presentation Format res\_scbl 8sec-gr-ccl  
 Dataset Creation Tue May 20 09:15:50 2025  
 Charted by Depth in Feet scaled 1:240





Serial Number: 070150  
 Tool Model: Probe  
 Calibration Casing Diameter: 7.000 in  
 Calibration Depth: -2.417 ft

Master Calibration, performed Tue May 20 08:51:37 2025:

	Raw (v)		Calibrated (mv)		Results	
	Zero	Cal	Zero	Cal	Gain	Offset
3'	-0.006	1.111	1.800	62.200	54.063	2.130
CAL	-0.006	1.145				
5'	-0.006	1.119	1.800	62.200	53.666	2.129
SUM						
S1	-0.006	1.146	0.000	100.000	86.811	0.526
S2	-0.006	1.088	0.000	100.000	91.435	0.557
S3	-0.006	1.067	0.000	100.000	93.217	0.574
S4	-0.006	1.071	0.000	100.000	92.840	0.563
S5	-0.006	1.085	0.000	100.000	91.629	0.561
S6	-0.006	1.119	0.000	100.000	88.901	0.539
S7	-0.006	1.090	0.000	100.000	91.234	0.557
S8	-0.006	1.137	0.000	100.000	87.482	0.532

Internal Reference Calibration, performed (Not Performed):

	Raw (v)		Calibrated (v)		Results	
	Zero	Cal	Zero	Cal	Gain	Offset
CAL	0.000	0.000	-0.006	1.145	1.000	0.000

Air Zero Calibration, performed Wed Jul 20 12:36:42 2022:

	Raw (v)	Calibrated (v)	Results
	Zero	Zero	Offset
3'	0.000	0.000	0.000
5'	0.000	0.000	0.000
SUM			
S1	0.000	0.000	0.000
S2	0.000	0.000	0.000
S3	0.000	0.000	0.000
S4	0.000	0.000	0.000
S5	0.000	0.000	0.000
S6	0.000	0.000	0.000
S7	0.000	0.000	0.000
S8	0.000	0.000	0.000



Company **OCCIDENTAL PETROLEUM CORP.**  
 Well **GOBBLER 37N-E22HZ**  
 Field **WATTENBURG**  
 County **WELD**  
 State **CO**