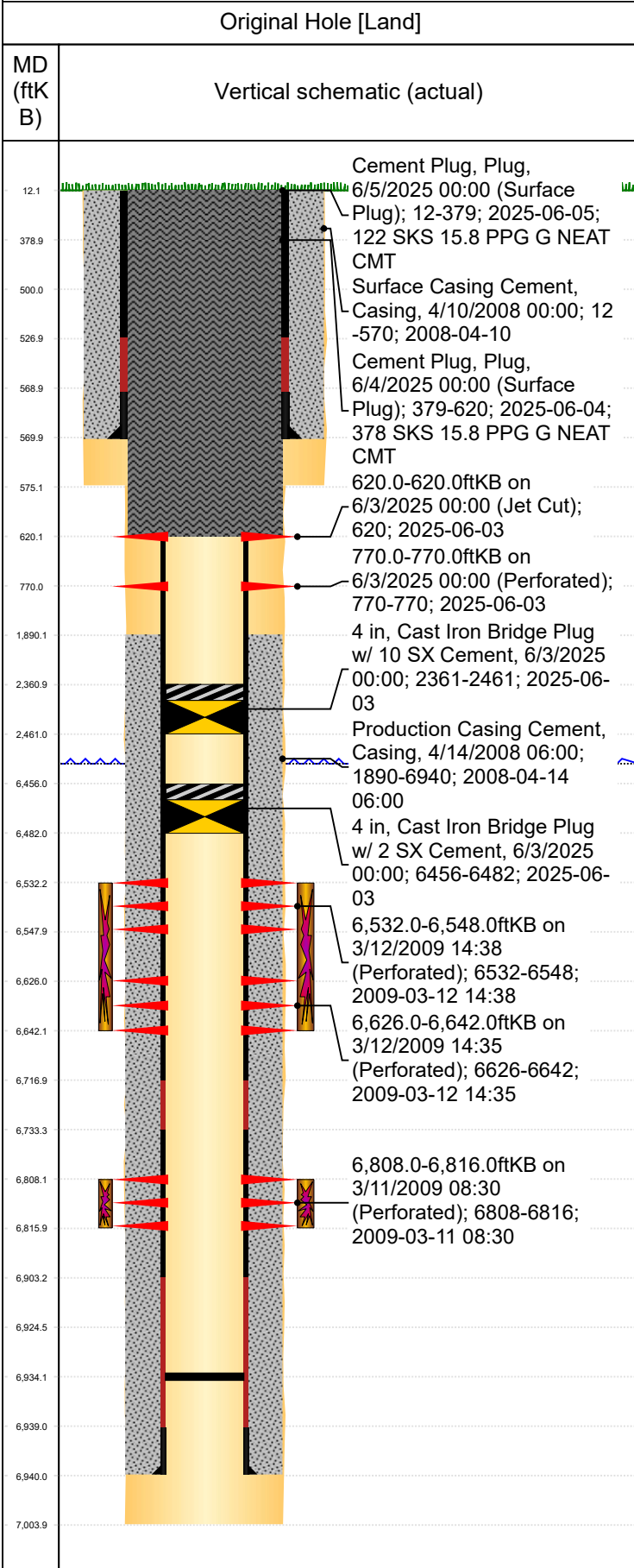




P&A Wellbore For State

Well Name: WELLS RANCH AA26-14



Well Header									
Surface UWI 0512325628		Business Unit Rockies		Gov Auth Dist		Prod Tree Loc Land			
Orig. KB to Gnd (ft) 12.00		Original Spud Date 4/11/2008		Abandon Date 8/11/2025		Well Sub-Status PA		High...	
								N	
Comment									
Surface Location (Congressional)									
Qtr 3 SE	Qtr 4 SW	Section 26	Twnshp 6	Twnsh... N	Range 63	Rng E/... W	Latitude (°) 40.45206176 9	Longitude (°) -104.406206033	
Wellbore Sections									
Section Des		Hole Size (in)		Top Depth (ftKB)		Btm Depth (ftKB)			
SURFACE		12 1/4		12.0		500.0			
PRODUCTION		7 7/8		570.0		6,940.0			
SURFACE		12 1/4		12.0		575.0			
PRODUCTION		7 7/8		575.0		7,004.0			
Casing Strings									
Csg Des		Run Date		OD (in)		Wt/Len (lb/ft)		Grade	
Surface		4/10/2008		8 5/8		36.00		J-55	
Production Casing		4/14/2008		4 1/2		11.60		M-80	
Cement									
Des		Start Date		Top (ftKB)		Btm (ftKB)			
SURFACE CASING CEMENT		4/10/2008		12.0		570.0			
PRODUCTION CASING CEMENT		4/14/2008		1,890.0		6,940.0			
Surface Plug		6/4/2025		379.0		620.0			
Surface Plug		6/5/2025		12.0		379.0			
Zone Statuses									
Zone Name		Status Date		Status		Fluid Type		Job	
CODELL		3/14/2009		PR				Drill and Suspend, 4/11/2008 00:00	
CODELL		6/3/2025		Closed				Abandon Well - Permanent, 6/2/2025 00:00	
NIOBRARA		3/14/2009		PR				Drill and Suspend, 4/11/2008 00:00	
NIOBRARA		6/3/2025		Closed				Abandon Well - Permanent, 6/2/2025 00:00	
Perforation Data									
Linked Zone		Explosive Type		Entered Shot Total		Top (ftKB)		Btm (ftKB)	
						620.0		620.0	
						770.0		770.0	
NIOBRARA, Original Hole		A		32		6,532.0		6,548.0	
NIOBRARA, Original Hole		B		32		6,626.0		6,642.0	
CODELL, Original Hole				32		6,808.0		6,816.0	
Stim/Frac Stage									
Zone		Start Date		Top (ftKB)		Btm (ftKB)			
NIOBRARA, Original Hole		3/12/2009		6,532.0		6,642.0			
CODELL, Original Hole		3/12/2009		6,808.0		6,816.0			
Other In Hole									
Run Date		Des		Make		OD (in)		Top (ftKB)	
6/3/2025		Cast Iron Bridge Plug w/ 10 SX Cement				4		2,361.0	
6/3/2025		Cast Iron Bridge Plug w/ 2 SX Cement				4		6,456.0	
Logs									
Date		Type				Depth Top (MD) (ftKB)		Btm (ftKB)	
4/14/2008		Caliper/Comp.Density/Neutron/GR/SP/ML				2,800		7,806.0	
4/30/2008		CBL/CCL/GR				1,790		6,920.0	
8/19/2008		GYRO				0		6,900.0	
Wellbore Plug Back Total Depths									
Date		Type		Com				PBSD (ftKB)	
4/19/2011		PLUG REMNANTS		TAG UP TALLY OUT, PRIOR TO LISTENING WELL				6,930	
11/20/2013		FILL						6,934	