



ALTIUM ENERGY PARTNERS

United States of America
Wattenburg
40.350541
-104.365829
ORIGAMI STATE A-031 6S-10-
BONANZA CREEK ENERGY
Patterson 345

Company : BONANZA CREEK ENERGY
Rig : PATTERRSON 345
Well : ORIGAMI STATE A-031 6S-10-03

County/Parish : Wattenburg
State/Province : Colorado
Country : United States of America

LOCATION
Latitude : 40.350541
Longitude : -104.365829
Other Services:

Country Field Location : Wattenburg
Well Company Rig : BONANZA CREEK ENERGY
Permanent Datum : MSL
Log Measured From : KB
Elevation KB = 25 @ 4578' Elev. KB : 4578
GM/D : 4553

Depth Logged : 1710 to : 1795
Spud Date : 06/22/2025
Total Depth MD : 2023.00
TVD : 6393.8

Job Number : AFP-281954
S. Label / D. Luridine
Sam / Frank

Table with columns: Run, Sensor Report (MD), Sensor Report (FT), Size (Inches), Change Report (MD), Change Report (FT)

DISCLAIMER

Allitude Energy Partners does not guarantee the accuracy or correctness of interpretations in or from this log. Since all interpretations are opinions based on measurements, Altitude Energy Partners shall under no circumstance be responsible for consequential damages or and other loss, cost or expense incurred or sustained in connection with the use of such interpretations

LOGGING SUMMARY

Table with columns: Log Run, Bit Run, Hole Size (in), Sensor Suite, Measured Depth, Date/Time

DRILLING FLUID SUMMARY

Table with columns: Mud Type, Density (lb/gal), Plastic Viscosity, Chlorides, Oil/Water Ratio, Maximum Circ Temp (F)

CORRECTIONS

Table with columns: Log Run, Bit Run, Start Date/Time, Start Depth (ft), End Date/Time, End Depth (ft)

EQUIPMENT

Table with columns: Log Run, Bit Run, Start Date/Time, Start Depth (ft), End Date/Time, End Depth (ft)

SERIAL NUMBERS

Table with columns: Surface Gear, Collar Correction, Directional (ft), WPR (ft), PWD (ft), Vibration (ft)

SENSOR OFFSETS TO BIT

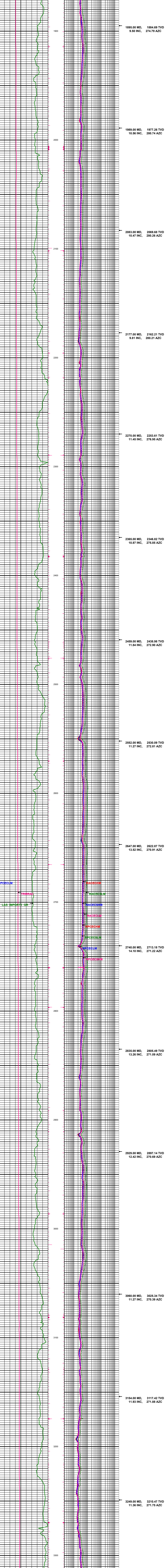
Table with columns: Directional (ft), Gamma Ray (ft), WPR (ft), PWD (ft), Vibration (ft)

RESISTIVITY CORRECTIONS

Table with columns: Resistivity Phase Diff. BHC 2 MHz Short RPCECSHM, Resistivity Phase Diff. BHC 400 kHz Long RPCECLM, Resistivity Phase Diff. BHC 400 kHz Short RPCECSLM, Resistivity Phase Diff. BHC 2 MHz Long RPCECHM, Resistivity Atten. BHC 400 kHz Long RACECLM, Resistivity Atten. BHC 400 kHz Short RACECSHM, Resistivity Atten. BHC 2 MHz Short RACECSLM, Resistivity Atten. BHC 400 kHz Short RACECSLM, Resistivity Atten. BHC 2 MHz Long RACECHM

Directional Surveys

Table with columns: MD, FEET, Directional Surveys



FINAL PRINT

