

Company: Boranza Creek Energy
 Well Name: Origami State A-031 6S-10-03
 AP#: 05-123-51157
 County: Wadsworth
 State: CO
 Country: USA
 Job number: AEP-RM-250564
 Field: Wattenburg
 Rig ID: Patterson 345
 Survey Company: Altitude Energy Partners LLC
 Stephen Lebel Day MWD
 Drew Lundine Night MWD

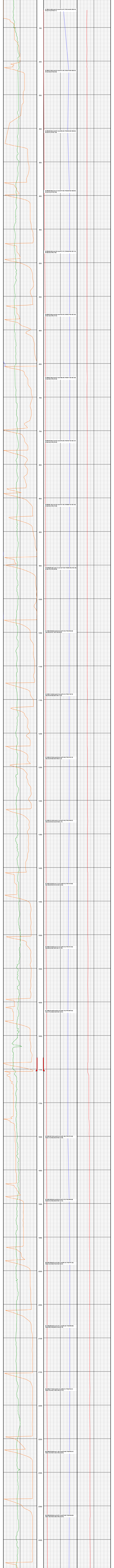
Log measurements: GAMMA
 Depth measured from: BGS
 Maximum temperature: 241

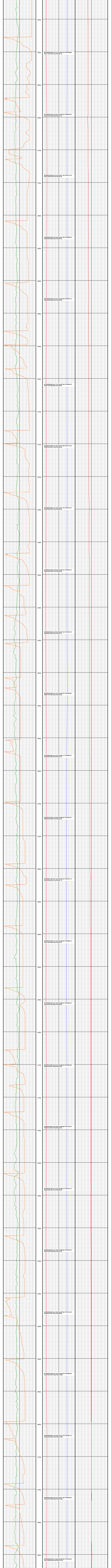
Depth	Date		
Start: 100	1703	06/21/2025	06/25/2025
End: 12033			
Casing	Depth	Casing Size	Hole Size
Surface:	1703		13.5
Intermediate:	12033		8.5
Intermediate2:			

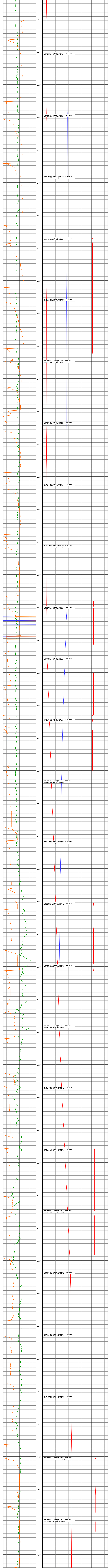
Run	Tool	Gamma	Bit	Survey	Offsets	Reis	Mud Data	Weight	Depth	End	Start	Dates	End
1	XGM169	10.60	13.50	77	51.53	N/A	WBM	9.5	105	1703	06/21/2025 00:00	06/21/25 04:00	
2	XGM331	8.430	8.50	70	44.74	261.51	OBM	9.5	1703	12033	06/24/2025 05:30	06/25/25 20:00	
3													
4													
5													
6													
7													
8													
9													
10													

FIQAT-1666 ft SHOE-1666 ft KOP-5845 ft LP-6295 ft TD-12033 ft

Altitude Energy Partners LLC uses its best efforts to provide its customers with accurate information and interpretations in conjunction with services performed but will not be held liable or responsible for the accuracy of such information or interpretation.







4900

4950

5000

5050

5100

5150

5200

5250

5300

5400

5450

5500

5550

5600

5650

5700

5750

5800

5850

5900

5950

6000

6050

6100

6150

6200

6250

6300

6350

6400

6450

6500

6550

6600

6650

6700

6750

6800

6850

6900

6950

7000

7050

7100

7150

7200

7250

#51 MCD(4953.00) Inc(14.90) Arm(203.34) TVD(4877.84)
VS(116.38) N-S(18.07) E-W(794.79)

#52 MCD(5048.00) Inc(13.20) Arm(275.50) TVD(4978.91)
VS(118.90) N-S(18.77) E-W(813.81)

#53 MCD(5142.00) Inc(10.25) Arm(274.75) TVD(5063.11)
VS(120.35) N-S(20.41) E-W(832.04)

#54 MCD(5236.00) Inc(11.18) Arm(268.80) TVD(5155.47)
VS(122.89) N-S(20.92) E-W(849.48)

#55 MCD(5330.00) Inc(12.24) Arm(265.80) TVD(5247.51)
VS(126.93) N-S(20.00) E-W(868.53)

#56 MCD(5424.00) Inc(12.15) Arm(267.30) TVD(5339.39)
VS(121.45) N-S(19.80) E-W(888.30)

#57 MCD(5518.00) Inc(11.30) Arm(268.51) TVD(5431.32)
VS(126.81) N-S(19.73) E-W(907.97)

#58 MCD(5613.00) Inc(11.04) Arm(272.02) TVD(5524.06)
VS(128.50) N-S(19.53) E-W(928.52)

#59 MCD(5707.00) Inc(11.20) Arm(272.02) TVD(5616.00)
VS(142.00) N-S(19.80) E-W(948.80)

#60 MCD(5801.00) Inc(11.61) Arm(268.80) TVD(5707.21)
VS(142.81) N-S(19.95) E-W(970.92)

#61 MCD(5895.00) Inc(14.67) Arm(268.80) TVD(5793.00)
VS(141.89) N-S(19.25) E-W(993.65)

#62 MCD(5973.00) Inc(12.51) Arm(224.81) TVD(5873.51)
VS(172.10) N-S(19.29) E-W(1011.85)

#63 MCD(6067.00) Inc(27.20) Arm(200.81) TVD(5958.22)
VS(206.35) N-S(32.12) E-W(1024.69)

#64 MCD(6160.00) Inc(24.38) Arm(202.06) TVD(6038.06)
VS(201.30) N-S(17.84) E-W(1053.97)

#65 MCD(6254.00) Inc(41.48) Arm(193.00) TVD(6112.74)
VS(208.30) N-S(19.11) E-W(1072.82)

#66 MCD(6348.00) Inc(46.35) Arm(186.13) TVD(6181.78)
VS(212.50) N-S(19.42) E-W(1092.42)

#67 MCD(6442.00) Inc(51.20) Arm(180.30) TVD(6242.90)
VS(442.18) N-S(28.23) E-W(1088.20)

#68 MCD(6536.00) Inc(50.73) Arm(171.71) TVD(6298.78)
VS(514.44) N-S(340.17) E-W(1090.37)

#69 MCD(6630.00) Inc(60.50) Arm(163.31) TVD(6358.00)
VS(602.73) N-S(425.04) E-W(1094.52)

#70 MCD(6724.00) Inc(77.11) Arm(181.19) TVD(6420.92)
VS(692.43) N-S(514.64) E-W(1098.02)

#71 MCD(6818.00) Inc(80.77) Arm(180.09) TVD(6480.90)
VS(784.33) N-S(607.50) E-W(1099.62)

#72 MCD(6912.00) Inc(80.50) Arm(180.00) TVD(6540.00)
VS(878.32) N-S(702.20) E-W(1099.62)

#73 MCD(7006.00) Inc(87.67) Arm(180.00) TVD(6600.00)
VS(974.60) N-S(797.20) E-W(1100.20)

#74 MCD(7100.00) Inc(89.63) Arm(170.30) TVD(6660.00)
VS(1064.21) N-S(891.20) E-W(1100.20)

#75 MCD(7194.00) Inc(88.50) Arm(170.30) TVD(6720.00)
VS(1157.71) N-S(986.20) E-W(1099.62)

