

Company: Boranza Creek Energy  
 Well Name: Origami State A-031 6S-10-02  
 AP#: 05-123-51156  
 County: Wadsworth  
 State: OH  
 Country: USA  
 Job number: AEP-RM-250563  
 Field: Wattenburg  
 Rig ID: Patterson 345  
 Survey Company: Altitude Energy Partners LLC  
 Stephen Leibel Day MWD  
 Drew Lundine Night MWD

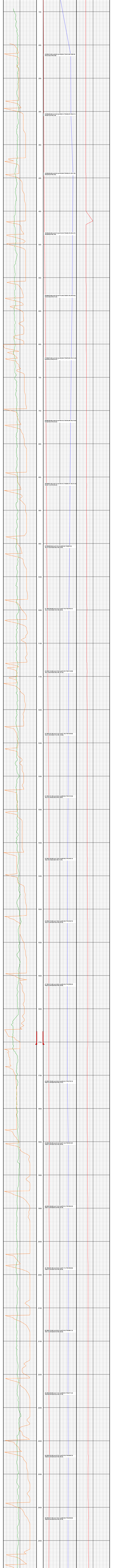
Log measurements: GAMMA  
 Depth measured from: BGS  
 Maximum temperature: 236

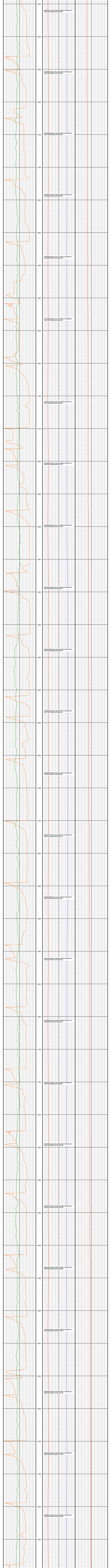
Depth	Date	
Start: 100	06/21/2025	
End: 12155	06/23/2025	
Casing	Depth	Casing Size
Surface:	1704	9 5/8
Intermediate:		13.5
Intermediate2:		
Mud Type: OBM	Elevations	
Density: 9.5	KB:	25
Viscosity: 0	DF:	4578
Rmf: N/A	GL:	4553

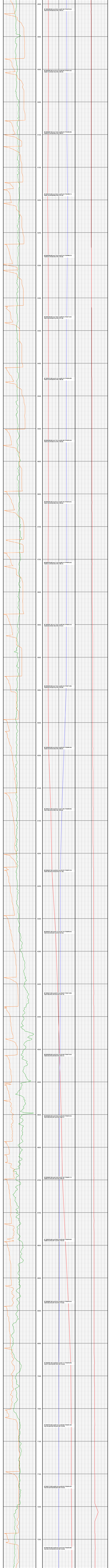
Run	Tool	Gamma	Bit	Survey	Offsets	Gamma	Reis	Mud Data	Weight	Depth	End	Start	End
1	XGM169	10.60	13.50	77	51.53	N/A	N/A	OBM	9.5	105	1710	06/21/2025 10:00	06/21/2025 15:00
2	XGM169	8.179	8.50	69	44.00	N/A	N/A	OBM	9.5	1710	12155	06/22/2025 05:00	06/23/2025 14:00
3													
4													
5													
6													
7													
8													
9													
10													

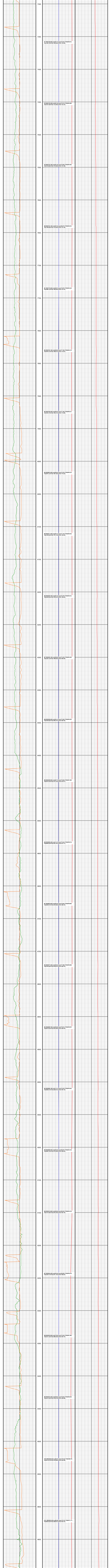
Float: 1672# SHOE: 1704# KOP: 6000# LF: 655# TG: 12155#

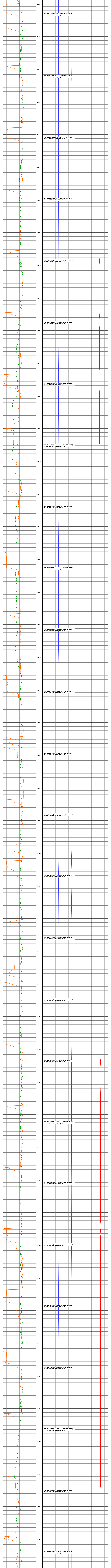
Altitude Energy Partners LLC uses its best efforts to provide its customers with accurate information and interpretations in conjunction with services performed but will not be held liable or responsible for the accuracy of such information or interpretation.













12100

12150

PTB: MD(12155.00) Inc(89.40) Azm(173.04) TVD(6368.35)  
 VS(6018.55) N-S(-5817.31) E-W(-1543.33)

