

TABLE 1
FIELD DATA SUMMARY TABLE
NOBLE 100322
PATRIOT B-65N64W, WELD COUNTY, COLORADO
REM # 25418

Sample ID	Sample Date	Depth	GPS Data Latitude/Longitude		PDOP Value	VOC Concentration (ppm)
AST E SURF.	02/13/2023	Surface	40.396703	-104.554854	-	0.0
AST W SURF.	02/13/2023	Surface	40.396699	-104.554923	-	0.0
PWV E FLOOR 5FT	02/13/2023	5	40.396693	-104.554813	-	0.0
PWV W FLOOR 5FT	02/13/2023	5	40.396691	-104.554998	-	0.0
SEP E SURF.	02/13/2023	Surface	40.3969630	-104.55497	-	0.0
FL09(SEP) FLOOR01 4'	07/27/2023	4.0 Ft	40.3969584	-104.55502	-	0.0
FL09(SEP) N01 Wall 3'	07/27/2023	3.0 Ft	40.3969790	-104.55502	-	0.0
FL09(SEP) S01 Wall 3'	07/27/2023	3.0 Ft	40.3969363	-104.55502	-	0.0
FL09(SEP) W Wall 3'	07/27/2023	3.0 Ft	40.3969556	-104.55505	-	0.0
FL09(SEP) E Wall 3'	07/28/2023	3.0 Ft	40.3969622	-104.55493	-	0.0
FL09(SEP) Floor 4'	07/28/2023	4.0 Ft	40.3969587	-104.55496	-	0.0
FL09(SEP) N02 Wall 3'	07/28/2023	3.0 Ft	40.3969782	-104.55496	-	0.0
FL09(SEP) S02 Wall 3'	07/28/2023	3.0 Ft	40.3969426	-104.55496	-	0.0
FL08 BKG01	8/14/2023	3, 4	40.396532	-104.555516	-	0.0
FL08 BKG02	8/14/2023	3, 4	40.396533	-104.555760	-	0.0
FL08 BKG03	8/14/2023	3, 4	40.396694	-104.555772	-	0.0
FL08 BKG04	8/14/2023	3, 4	40.396702	-104.555635	-	0.0
FL08 BKG05	8/14/2023	3, 4	40.396722	-104.555505	-	0.0

Sample ID	Sample Date	Depth	GPS Data		PDOP Value	VOC Concentration (ppm)
			Latitude/Longitude			
20BKG1 3ft	3/11/2025	3	40.398967	-104.559581	0.9	0.0
20BKG 2 3ft	3/11/2025	3	40.397171	-104.558787	0.9	0.0
20BKG3 3ft	3/11/2025	3	40.397630	-104.555038	0.9	0.0
20BKG4 3ft	3/11/2025	3	40.396810	-104.555438	0.9	0.0
20BKG5 3ft	3/11/2025	3	40.396410	-104.555117	0.9	0.0

1. Global Positioning System (GPS) data is provided in decimal degrees using North American Datum (NAD) 83 UTMZone 13 North.

2. Volatile organic compound (VOC) concentrations are measured in the field using a photoionization detector (PID).

PDOP = Position Dilution of Precision

ppm = Parts per million

in. = Inches

ft. = Feet

bgs = Below ground surface

 = Material excavated and transported off site for disposal.

TABLE 2
SUMMARY OF VOLATILE ORGANIC SOIL CHEMISTRY DATA
NOBLE 100322
PATRIOT B-65N64W, WELD COUNTY, COLORADO
REM # 25418

Sample ID	Sample Date	Depth (ft)	Benzene (mg/kg)	Toluene (mg/kg)	Ethyl-Benzene (mg/kg)	Xylenes (mg/kg)	1,2,4-Trimethyl-Benzene (mg/kg)	1,3,5-Trimethyl-Benzene (mg/kg)	Naphthalene (mg/kg)	TPH (mg/kg)	TPH GRO (mg/kg)	TPH DRO (mg/kg)	TPH ORO (mg/kg)
ECMC Table 915-1 Limits (Residential SSL)			1.2	490	5.8	58	30	27	2	500	500**		
ECMC Table 915-1 Limits (Protection of Groundwater SSL)			0.0026	0.69	0.78	9.9	0.0081	0.0087	0.0038	500	500**		
AST E SURF.	02/13/2023	Surface	<0.0020	<0.0050	<0.0050	<0.010	<0.0050	<0.0050	<0.0038	<500	<0.50	<50	<50
AST W SURF.	02/13/2023	Surface	<0.0020	<0.0050	<0.0050	<0.010	<0.0050	<0.0050	<0.0038	<500	<0.50	<50	<50
PWV E FLOOR 5FT	02/13/2023	5.0 Ft	<0.0020	<0.0050	<0.0050	<0.010	<0.0050	<0.0050	<0.0038	<500	<0.50	<50	<50
PWV W FLOOR 5FT	02/13/2023	5.0 Ft	<0.0020	<0.0050	<0.0050	<0.010	<0.0050	<0.0050	<0.0038	<500	<0.50	<50	<50
SEP E SURF.	02/13/2023	Surface	<0.0020	<0.0050	<0.0050	<0.010	<0.0050	<0.0050	0.0200	<500	<0.50	<50	<50
FL09(SEP) FLOOR01 4'	07/27/2023	4.0 Ft	<0.0020	<0.0050	<0.0050	<0.010	<0.0050	<0.0050	<0.0038	<500	<0.50	<50	<50
FL09(SEP) N01 Wall 3'	07/27/2023	3.0 Ft	<0.0020	<0.0050	<0.0050	<0.010	<0.0050	<0.0050	<0.0038	<500	<0.50	<50	<50
FL09(SEP) S01 Wall 3'	07/27/2023	3.0 Ft	<0.0020	<0.0050	<0.0050	<0.010	<0.0050	<0.0050	<0.0038	<500	<0.50	<50	<50
FL09(SEP) W Wall 3'	07/27/2023	3.0 Ft	<0.0020	<0.0050	<0.0050	<0.010	<0.0050	<0.0050	<0.0038	<500	<0.50	<50	<50
FL09(SEP) E Wall 3'	07/28/2023	3.0 Ft	<0.0020	<0.0050	<0.0050	<0.010	<0.0050	<0.0050	<0.0038	<500	<0.50	<50	<50
FL09(SEP) Floor 4'	07/28/2023	4.0 Ft	<0.0020	<0.0050	<0.0050	<0.010	<0.0050	<0.0050	<0.0038	<500	<0.50	<50	<50
FL09(SEP) N02 Wall 3'	07/28/2023	3.0 Ft	<0.0020	<0.0050	<0.0050	<0.010	<0.0050	<0.0050	<0.0038	<500	<0.50	<50	<50
FL09(SEP) S02 Wall 3'	07/28/2023	3.0 Ft	<0.0020	<0.0050	<0.0050	<0.010	<0.0050	<0.0050	<0.0038	<500	<0.50	<50	<50

1. Bold values exceed the ECMC Table 915-1 limit(s)

2. Red & blue highlighted soil analytical values indicate an exceedance of the referenced soil screening level (SSL)

3. * Indicates laboratory minimum detection limit in excess of SSL

4. ** Summation of GRO+DRO+ORO must be less than 500 mg/kg

NA - Not analyzed

= Material excavated and transported off site for disposal.

TABLE 3
SUMMARY OF POLYCYCLIC AROMATIC HYDROCARBON SOIL CHEMISTRY DATA
NOBLE 100322
PATRIOT B-65N64W, WELD COUNTY, COLORADO
REM # 25418

Sample ID	Sample Date	Depth (ft)	Acenaphthene (mg/kg)	Anthracene (mg/kg)	Benzo (a) Anthracene (mg/kg)	Benzo (a) Pyrene (mg/kg)	Benzo (b) Fluoranthene (mg/kg)	Benzo (k) Fluoranthene (mg/kg)	Chrysene (mg/kg)	Dibenzo (a,h) Anthracene (mg/kg)	Fluoranthene (mg/kg)	Fluorene (mg/kg)	Indeno (1,2,3-cd) Pyrene (mg/kg)	Pyrene (mg/kg)	1-Methyl - Naphthalene (mg/kg)	2-Methyl- Naphthalene (mg/kg)
ECMC Table 915-1 Limits (Residential SSL)			360	1800	1.1	0.11	1.1	11	110	0.11	240	240	1.1	180	18	24
ECMC Table 915-1 Limits (Protection of Groundwater SSL)			0.55	5.8	0.011	0.24	0.3	2.9	9	0.096	8.9	0.54	0.98	1.3	0.006	0.019
AST E SURF.	02/13/2023	Surface	<0.00500	<0.00500	<0.00500	<0.00500	<0.00500	<0.00500	<0.00500	<0.00500	<0.00500	<0.00500	<0.00500	<0.00500	<0.00500	<0.00500
AST W SURF.	02/13/2023	Surface	<0.00500	<0.00500	<0.00500	<0.00500	<0.00500	<0.00500	<0.00500	<0.00500	<0.00500	<0.00500	<0.00500	<0.00500	<0.00500	<0.00500
PWV E FLOOR 5FT	02/13/2023	5.0 Ft	<0.00500	<0.00500	<0.00500	<0.00500	<0.00500	<0.00500	<0.00500	<0.00500	<0.00500	<0.00500	<0.00500	<0.00500	<0.00500	<0.00500
PWV W FLOOR 5FT	02/13/2023	5.0 Ft	<0.00500	<0.00500	<0.00500	<0.00500	<0.00500	<0.00500	<0.00500	<0.00500	<0.00500	<0.00500	<0.00500	<0.00500	<0.00500	<0.00500
SEP E SURF.	02/13/2023	Surface	0.149	0.206	0.38	0.212	0.374	0.119	0.349	<0.00500	0.515	0.174	0.143	0.534	0.0248	0.0549
FL09(SEP) FLOOR01 4'	07/27/2023	4.0 Ft	<0.00500	<0.00500	<0.00500	<0.00500	<0.00500	<0.00500	<0.00500	<0.00500	<0.00500	<0.00500	<0.00500	<0.00500	<0.00500	<0.00500
FL09(SEP) N01 Wall 3'	07/27/2023	3.0 Ft	<0.00500	<0.00500	<0.00500	<0.00500	<0.00500	<0.00500	<0.00500	<0.00500	<0.00500	<0.00500	<0.00500	<0.00500	<0.00500	<0.00500
FL09(SEP) S01 Wall 3'	07/27/2023	3.0 Ft	<0.00500	<0.00500	<0.00500	<0.00500	<0.00500	<0.00500	<0.00500	<0.00500	<0.00500	<0.00500	<0.00500	<0.00500	<0.00500	<0.00500
FL09(SEP) W Wall 3'	07/27/2023	3.0 Ft	<0.00500	<0.00500	<0.00500	<0.00500	<0.00500	<0.00500	<0.00500	<0.00500	<0.00500	<0.00500	<0.00500	<0.00500	<0.00500	<0.00500
FL09(SEP) E Wall 3'	07/28/2023	3.0 Ft	<0.00500	<0.00500	0.00545	0.00615	<0.00500	<0.00500	0.00661	<0.00500	0.0122	<0.00500	0.00699	0.00898	<0.00500	<0.00500
FL09(SEP) Floor 4'	07/28/2023	4.0 Ft	<0.00500	<0.00500	<0.00500	<0.00500	<0.00500	<0.00500	<0.00500	<0.00500	<0.00500	<0.00500	<0.00500	<0.00500	<0.00500	<0.00500
FL09(SEP) N02 Wall 3'	07/28/2023	3.0 Ft	<0.00500	<0.00500	<0.00500	<0.00500	<0.00500	<0.00500	<0.00500	<0.00500	<0.00500	<0.00500	<0.00500	<0.00500	<0.00500	<0.00500
FL09(SEP) S02 Wall 3'	07/28/2023	3.0 Ft	<0.00500	<0.00500	<0.00500	<0.00500	<0.00500	<0.00500	<0.00500	<0.00500	<0.00500	<0.00500	<0.00500	<0.00500	<0.00500	<0.00500

1. Bold values exceed the ECMC Table 915-1 limit(s)

2. Red & blue highlighted soil analytical values indicate an exceedance of the referenced soil screening level (SSL)

3. * Indicates laboratory minimum detection limit in excess of SSL

NA - Not analyzed

= Material excavated and transported off site for disposal.

TABLE 4
SUMMARY OF SOIL SUITABILITY FOR RECLAMATION
NOBLE 100322
PATRIOT B-65N64W, WELD COUNTY, COLORADO
REM # 25418

Sample ID	Sample Date	Depth (ft)	pH (Standard Units)	EC (mmhos/cm)	SAR (Standard Units)	Boron (mg/L)
ECMC Table 915-1 Soil Suitability Limits			6 - 8.3	<4	<6	2
AST E SURF.	02/13/2023	Surface	6.74	0.591	0.137	0.155
AST W SURF.	02/13/2023	Surface	7.85	0.262	0.433	0.202
FL01 3FT	02/10/2023	3.0 Ft	7.67	0.447	1.19	0.157
FL08 3FT	02/10/2023	3.0 Ft	7.88	0.322	0.285	0.1
FL09 3FT	02/10/2023	3.0 Ft	7.45	1.26	1.11	0.477
PWV E FLOOR 5FT	02/13/2023	5.0 Ft	8.37	0.232	0.521	0.125
PWV W FLOOR 5FT	02/13/2023	5.0 Ft	7.74	1.08	1.99	0.11
SEP E SURF.	02/13/2023	Surface	7.66	0.578	0.388	0.383
FL09(SEP) FLOOR01 4'	07/27/2023	4.0 Ft	7.81	1.07	1.96	0.22
FL09(SEP) N01 Wall 3'	07/27/2023	3.0 Ft	7.87	0.571	1.16	0.53
FL09(SEP) S01 Wall 3'	07/27/2023	3.0 Ft	7.53	0.739	1.67	0.561
FL09(SEP) W Wall 3'	07/27/2023	3.0 Ft	7.64	1.26	2.07	0.569
FL09(SEP) E Wall 3'	07/28/2023	3.0 Ft	7.69	0.536	0.737	0.456
FL09(SEP) Floor 4'	07/28/2023	4.0 Ft	8.02	0.537	2.08	0.144
FL09(SEP) NO2 Wall 3'	07/28/2023	3.0 Ft	7.56	0.215	0.104	0.422
FL09(SEP) S02 Wall 3'	07/28/2023	3.0 Ft	7.49	0.259	0.451	0.574
FL08 BKG01@3'	08/14/2023	3.0 Ft	7.28	0.724	0.194	0.266
FL08 BKG01@4'	08/14/2023	4.0 Ft	7.51	0.656	0.538	0.448
FL08 BKG02@3'	08/14/2023	3.0 Ft	7.78	0.845	0.572	0.368
FL08 BKG02@4'	08/14/2023	4.0 Ft	8	0.597	0.324	0.271
FL08 BKG03@3'	08/14/2023	3.0 Ft	7.96	0.41	0.57	0.314
FL08 BKG03@4'	08/14/2023	4.0 Ft	7.6	0.462	0.316	0.187
FL08 BKG04@3'	08/14/2023	3.0 Ft	7.72	0.434	0.196	0.277
FL08 BKG04@4'	08/14/2023	4.0 Ft	7.86	0.357	0.254	0.233
FL08 BKG05@3'	08/14/2023	3.0 Ft	7.5	0.453	0.0586	0.284
FL08 BKG05@4'	08/14/2023	4.0 Ft	7.85	0.25	0.0498	0.149

TABLE 4
SUMMARY OF SOIL SUITABILITY FOR RECLAMATION
NOBLE 100322
PATRIOT B-65N64W, WELD COUNTY, COLORADO
REM # 25418

Sample ID	Sample Date	Depth (ft)	pH (Standard Units)	EC (mmhos/cm)	SAR (Standard Units)	Boron (mg/L)
ECMC Table 915-1 Soil Suitability Limits			6 - 8.3	<4	<6	2
20 BKG 1 3Ft	03/12/2025	3	8.43	2.3	0.328	0.795
20 BKG 2 3Ft	03/12/2025	3	8.52	0.461	0.457	0.266
20 BKG 3 3Ft	03/12/2025	3	8.42	2.06	0.217	0.25
20 BKG 4 3Ft	03/12/2025	3	8.11	0.386	0.296	0.693
20 BKG 5 3Ft	03/12/2025	3	8.66	1.19	0.114	<0.0996
Maximum Background Concentration			8.66	2.30	2.74	0.80

1. **Bold** faced values exceed the ECMC Table 915-1 limit(s), but are within background concentrations.

2. **Bold** faced values exceed the ECMC Table 915-1 limit(s) and native background concentrations.

3. Brown highlighted soil analytical values indicate a regulatory exceedance.

NA - Not analyzed/Not applicable

Material excavated and transported off site for disposal.

TABLE 5
SUMMARY OF METALS IN SOIL CHEMISTRY DATA
NOBLE 100322
PATRIOT B-65N64W, WELD COUNTY, COLORADO
REM # 25418

Sample ID	Sample Date	Depth (ft)	Arsenic (mg/kg)	Barium (mg/kg)	Cadmium (mg/kg)	Chromium (VI) (mg/kg)	Copper (mg/kg)	Lead (mg/kg)	Nickel (mg/kg)	Selenium (mg/kg)	Silver (mg/kg)	Zinc (mg/kg)
ECMC Table 915-1 Limits (Residential SSL)			0.68	15000	71	0.3	3100	400	1500	390	390	23000
ECMC Table 915-1 Limits (Protection of Groundwater SSL)			0.29	82	0.38	0.00067	46	14	26	0.26	0.8	370
FL09(SEP) FLOOR01 4'	07/27/2023	4.0 Ft	0.806	216	0.268	<0.30	0.838	13.2	1.62	<0.315	0.098	7.91
FL09(SEP) N01 Wall 3'	07/27/2023	3.0 Ft	0.672	80.3	0.274	<0.30	1.75	9.99	2.72	<0.331	0.125	11.7
FL09(SEP) S01 Wall 3'	07/27/2023	3.0 Ft	0.542	110	0.267	<0.30	1.67	10.7	2.33	<0.321	0.122	11.1
FL09(SEP) W Wall 3'	07/27/2023	3.0 Ft	0.73	85.9	<0.252	<0.30	1.31	11.3	2.31	<0.328	0.13	11.3
FL09(SEP) E Wall 3'	07/28/2023	3.0 Ft	0.753	75.7	0.283	<0.30	1.78	10.8	2.44	0.369	0.106	17.5
FL09(SEP) Floor 4'	07/28/2023	4.0 Ft	0.915	71.3	<0.247	<0.30	<0.493	9.8	1.75	<0.321	0.0518	7.6
FL09(SEP) N02 Wall 3'	07/28/2023	3.0 Ft	0.828	76	0.268	<0.30	1.35	12.4	2.12	<0.304	0.111	14.9
FL09(SEP) S02 Wall 3'	07/28/2023	3.0 Ft	0.677	74.7	0.347	<0.30	1.17	10.5	2.81	0.24	0.117	14.6
FL08 BKG01@3'	08/14/2023	3.0 Ft	0.95	77.2	0.365	<0.30	1.75	6.88	2.3	<0.260	0.0503	8.24
FL08 BKG01@4'	08/14/2023	4.0 Ft	0.875	102	0.532	<0.30	1.3	8.73	2.54	<0.260	0.0901	9.25
FL08 BKG02@3'	08/14/2023	3.0 Ft	0.735	119	0.349	<0.30	<0.400	7.41	0.899	<0.260	0.0648	5.94
FL08 BKG02@4'	08/14/2023	4.0 Ft	0.504	29.4	<0.200	<0.30	<0.400	3.12	0.578	<0.260	<0.0200	3.29
FL08 BKG03@3'	08/14/2023	3.0 Ft	0.437	29.6	<0.200	<0.30	<0.400	4.17	0.671	<0.260	0.0376	4.11
FL08 BKG03@4'	08/14/2023	4.0 Ft	0.494	21.2	0.215	<0.30	<0.400	3.61	0.658	<0.260	0.0319	3.46
FL08 BKG04@3'	08/14/2023	3.0 Ft	0.77	88.8	0.434	<0.30	<0.400	7.65	1.16	<0.260	0.0567	5.71
FL08 BKG04@4'	08/14/2023	4.0 Ft	0.492	49	0.331	<0.30	<0.400	5.14	0.717	<0.260	0.0422	4.6
FL08 BKG05@3'	08/14/2023	3.0 Ft	0.251	11.6	<0.200	<0.30	<0.400	1.6	0.519	<0.260	<0.0200	2.22
FL08 BKG05@4'	08/14/2023	4.0 Ft	0.334	17.1	<0.200	<0.30	<0.400	2.41	0.543	<0.260	<0.0200	3.18

TABLE 5
SUMMARY OF METALS IN SOIL CHEMISTRY DATA
NOBLE 100322
PATRIOT B-65N64W, WELD COUNTY, COLORADO
REM # 25418

Sample ID	Sample Date	Depth (ft)	Arsenic (mg/kg)	Barium (mg/kg)	Cadmium (mg/kg)	Chromium (VI) (mg/kg)	Copper (mg/kg)	Lead (mg/kg)	Nickel (mg/kg)	Selenium (mg/kg)	Silver (mg/kg)	Zinc (mg/kg)
ECMC Table 915-1 Limits (Residential SSL)			0.68	15000	71	0.3	3100	400	1500	390	390	23000
ECMC Table 915-1 Limits (Protection of Groundwater SSL)			0.29	82	0.38	0.00067	46	14	26	0.26	0.8	370
20 BKG 1 3Ft	03/12/2025	3	4.2	80.7	0.0898	<0.5	9.93	9.34	8.75	0.253	0.0924	49.1
20 BKG 2 3Ft	03/12/2025	3	3	107	0.162	<0.5	<9.11	7.12	6.38	<0.237	<0.0911	<33.7
20 BKG 3 3Ft	03/12/2025	3	3.01	78.1	0.121	<0.5	<9.64	7.33	7.67	<0.251	<0.0964	37.8
20 BKG 4 3Ft	03/12/2025	3	3.52	107	0.422	<0.5	19.7	19.2	10.2	0.401	0.156	87.2
20 BKG 5 3Ft	03/12/2025	3	1.18	20	<0.0965	<0.5	<9.65	3.75	1.93	<0.251	<0.0965	<35.7
1.25x Maximum Background Concentration			5.25	196	0.67	NA	25	24	13	0.501	0.195	109

- Bold** faced values exceed the ECMC Table 915-1 limit(s), but are within 1.25x background concentrations.
- Bold** faced values exceed the ECMC Table 915-1 limit(s) and native background concentrations.
- Red & blue highlighted soil analytical values indicate an exceedance of the referenced soil screening level (SSL).
- Non-detect background results accounted for in the highest background concentration by using the reporting limit.

ECMC = Energy & Carbon Management Commission

(<) = Analytical result is less than the indicated laboratory reporting limit.

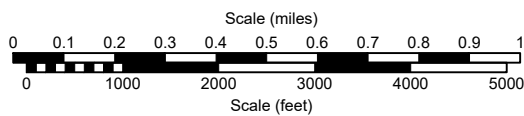
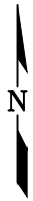
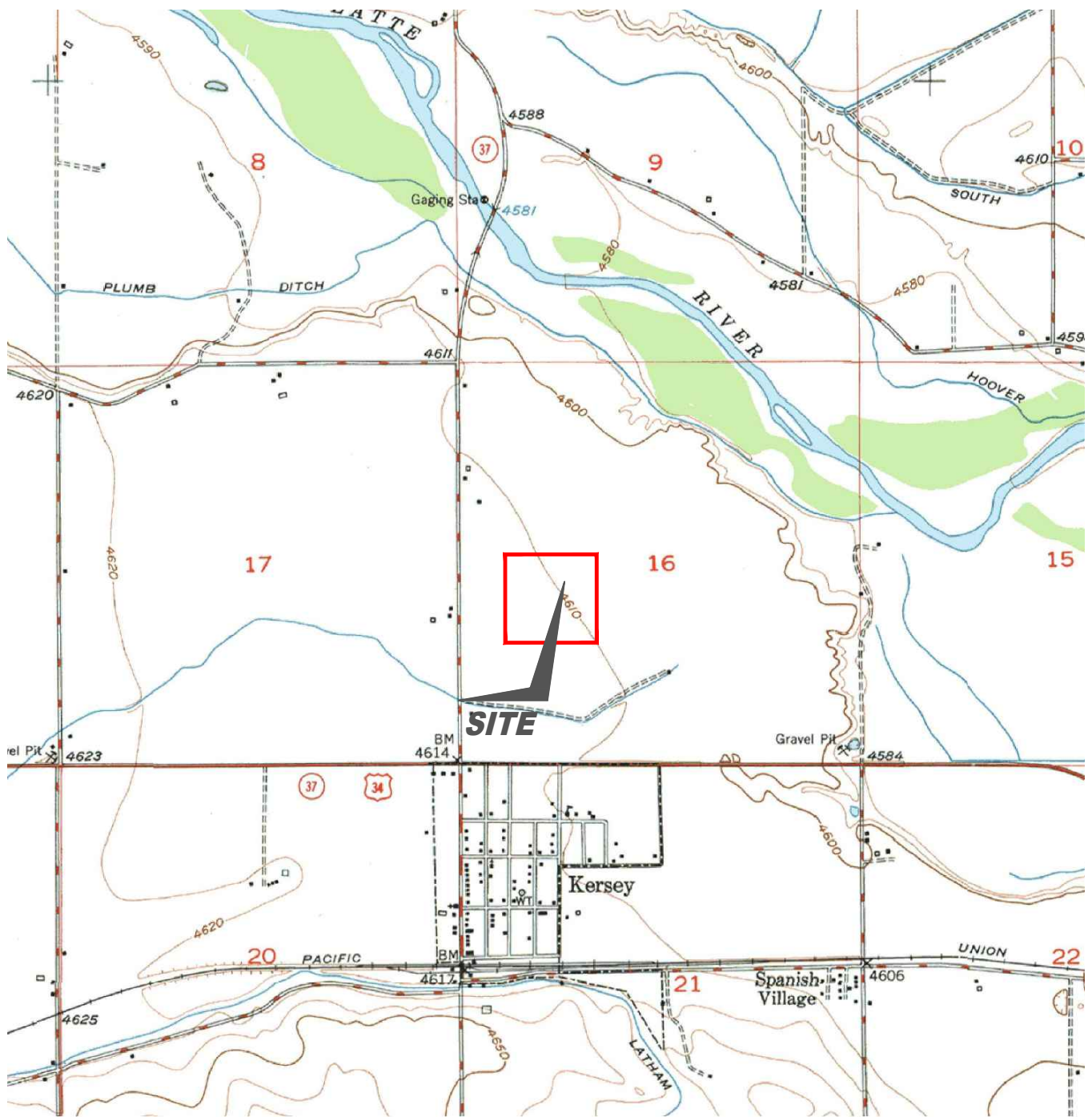
mg/kg = Milligrams per kilogram

ft. = Feet

bgs = Below ground surface

* Indicates laboratory minimum detection limit in excess of SSL

NA - Not analyzed/Not applicable



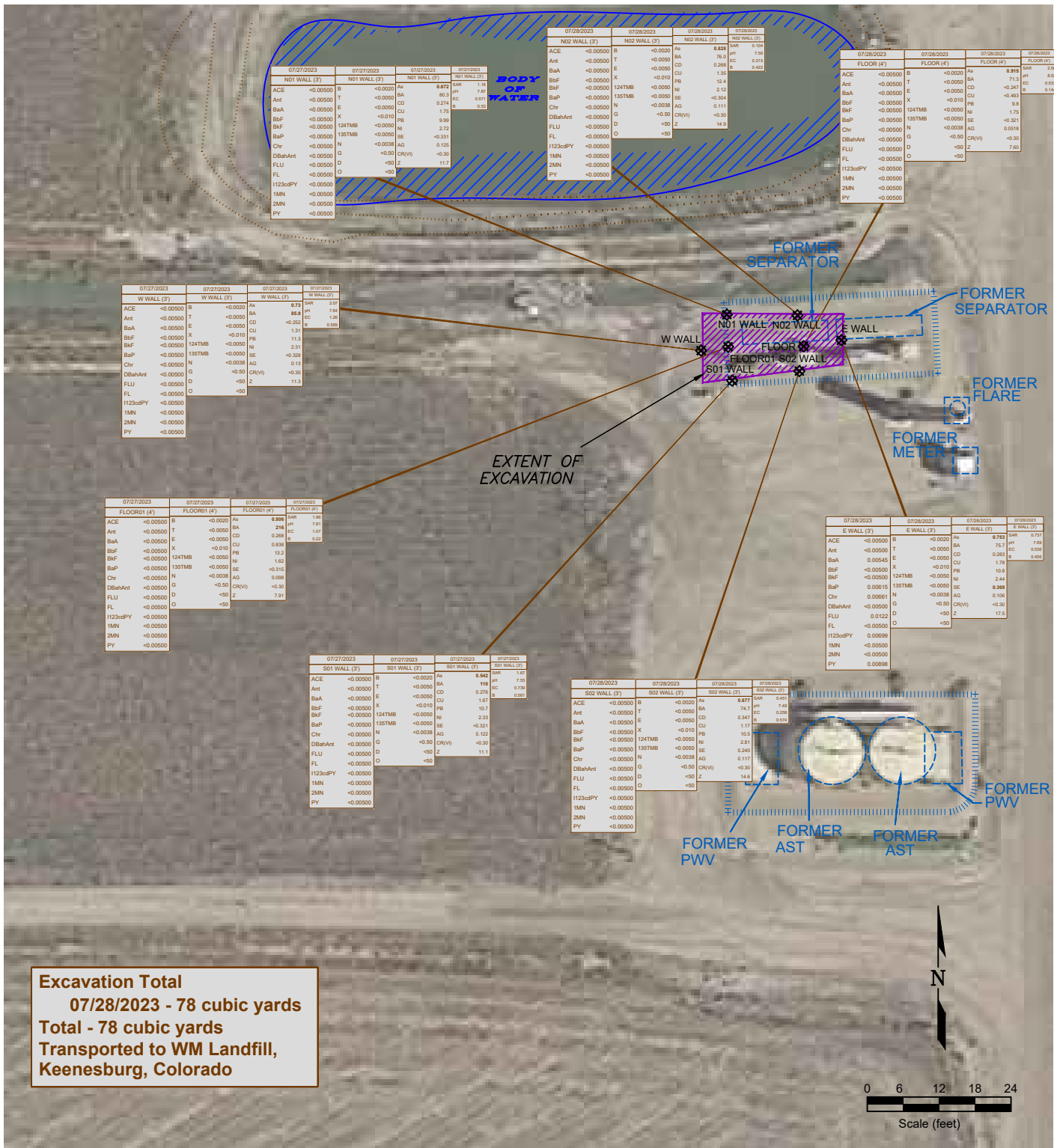
USGS 7.5 MINUTE SERIES (TOPOGRAPHIC)

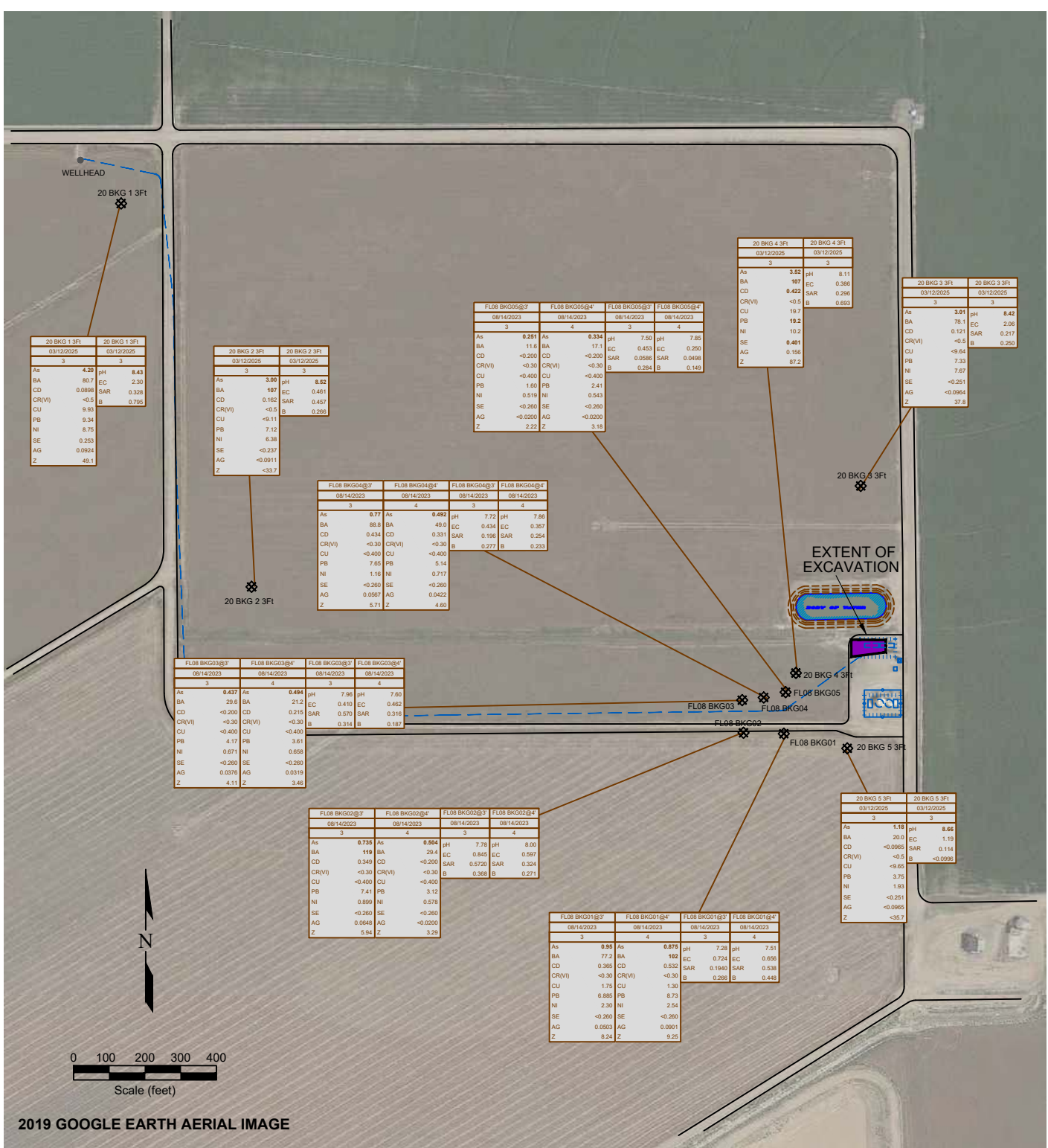
Figure 1
SITE LOCATION MAP

NOBLE ENERGY INC - Patriot B16-20 FL09-SEP
NWSW Sec. 16, T5N, R64W, 6th PM
 Weld County, Colorado
 40.399252°, -104.559793°

Project No. CO23-036	API #	Facility # 483056
Date 9/2/25	Remediation # 25418	Filename 23036T







2019 GOOGLE EARTH AERIAL IMAGE

LEGEND

- WELLHEAD LOCATION
- ABOVE GROUND STORAGE TANK
- FORMER FACILITY
- FORMER FLOW LINE
- EXTENT OF EXCAVATION
- CONTAINMENT BERM
- CONTAINMENT BERM
- FENCE LINE
- ⊗ SOIL SAMPLE LOCATION
- EXCAVATED AREAS

SAMPLE DATE DEPTH	SAMPLE ID	SAMPLE DATE DATE SAMPLED DEPTH (ft)	SAMPLE ID
-0.01	ARSENIC (mg/kg)	<500	pH (pH units)
-0.01	BARIIUM (mg/kg)	7.00	EC (mmhos/cm)
-0.01	CADMIUM (mg/kg)	<1	SAR (units)
-0.01	CHROMIUM (mg/kg)	<5	BORON (mg/L)
-0.01	COPPER (mg/kg)		
-0.05	LEAD (mg/kg)		
-0.05	NICKEL (mg/kg)		
-0.5	SELENIUM (mg/kg)		
-0.05	SILVER (mg/kg)		
-0.05	ZINC (mg/kg)		

Figure 4

BACKGROUND SAMPLE SOIL CHEMISTRY MAP
NOBLE ENERGY INC - Patriot B16-20 FLO9-SEP
NWSW Sec. 16, T5N, R64W, 6th PM
 Weld County, Colorado
 40.399252°, -104.559793°

Project No. CO23-036	API #	Facility # 483056
Date 9/2/25	Remediation # 25418	Filename 23036Q1

