



**RADIAL BOND TOOL
GAMMA RAY
CCL**

Company	CIVITAS RESOURCES	Country	U.S.A.
Well	NORTH PLATTE J-F-28HZ		
Field	WATTENBERG		
County	WELD		
State	COLORADO	Country	U.S.A.
Location:	API # : 05-123-36024 SW/SW LAT. 40.365440 LONG. -104.448360 SEC 28 TWP 5N RGE 63W		
Permanent Datum	GL	Elevation	4551'
Log Measured From	KB 12'		
Drilling Measured From	KB		
		Other Services	Elevation K.B. 4563' D.F. 4562' G.L. 4551'

Date	5-16-25
Run Number	ONE
Depth Driller	11080'
Depth Logger	2500'
Bottom Logged Interval	2496'
Top Log Interval	SURFACE
Open Hole Size	8.75"
Type Fluid	WATER
Density / Viscosity	N/A
Max. Recorded Temp.	N/A
Estimated Cement Top	N/A
Time Well Ready	ON ARRIVAL
Time Logger on Bottom	N/A
Equipment Number	3812
Location	PLATTEVILLE CO
Recorded By	MICHAEL RAMSEY
Witnessed By	JIM ADAMS

Borehole Record		Tubing Record					
Run Number	Bit	From	To	Size	Weight	From	To

Casing Record	Size	Mgt/Ft	Top	Bottom
Surface String	9.625"	36#	SURFACE	448'
Prot. String	7"	26#	SURFACE	6891'
Production String	4.5"	11.6#	6803'	11080'
Liner				

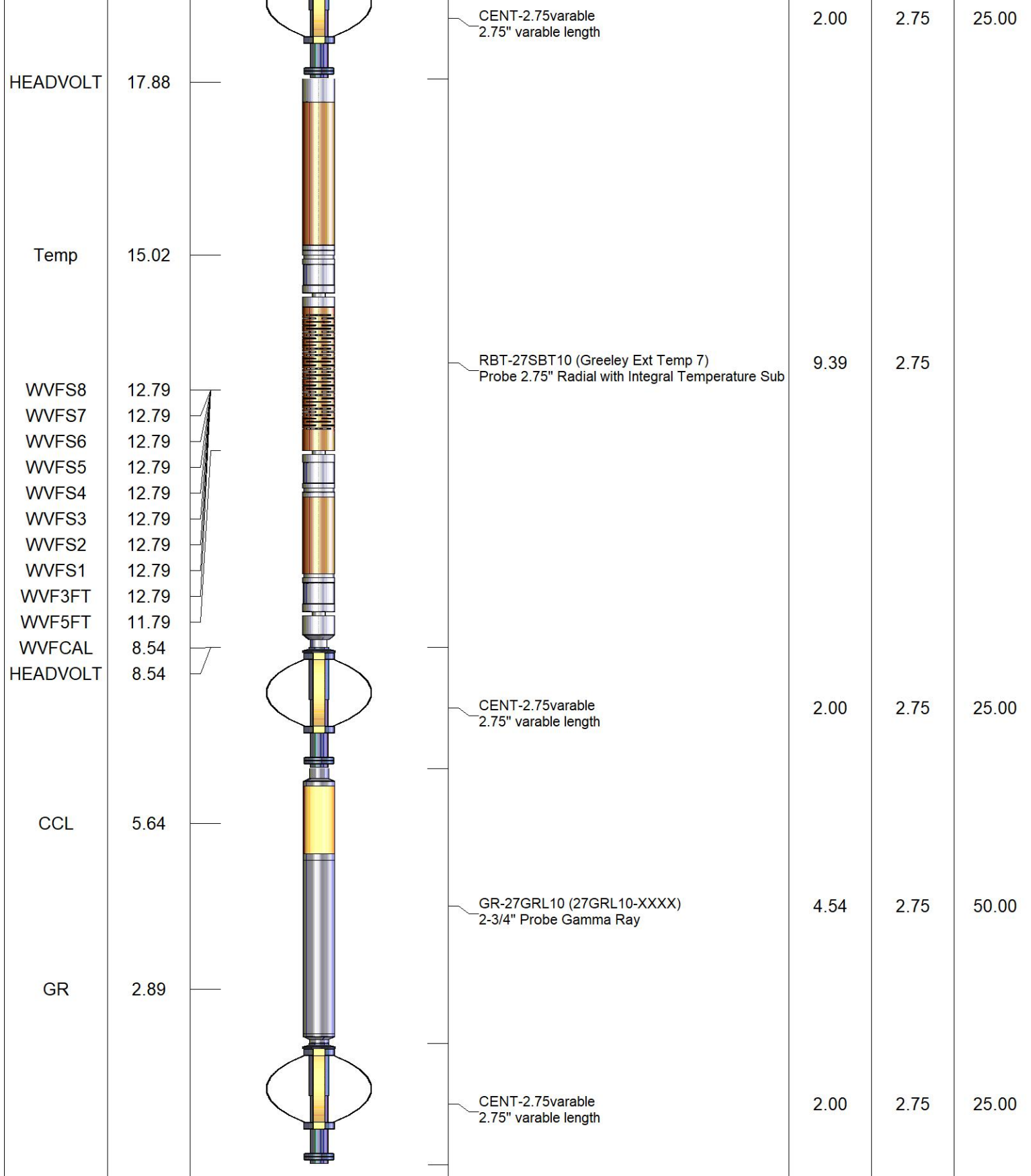
<<< Fold Here >>>

All interpretations are opinions based on inferences from electrical or other measurements and we cannot and do not guarantee the accuracy or correctness of any interpretation, and we shall not, except in the case of gross or willful negligence on our part, be liable or responsible for any loss, costs, damages, or expenses incurred or sustained by anyone resulting from any interpretation made by any of our officers, agents or employees. These interpretations are also subject to our general terms and conditions set out in our current Price Schedule.

Comments

**RAN CBL TO VERIFY CEMENT BOND
WELL LOADED UPON ARRIVAL
LOG CORRELATED TO KB WHICH IS 12'
LOG RECORDED UNDER 500PSI SURFACE INDUCED PRESSURE
VOID IN ANNULUS 36' - SURFACE
SECTOR SPREAD DUE TO DEVIATION**

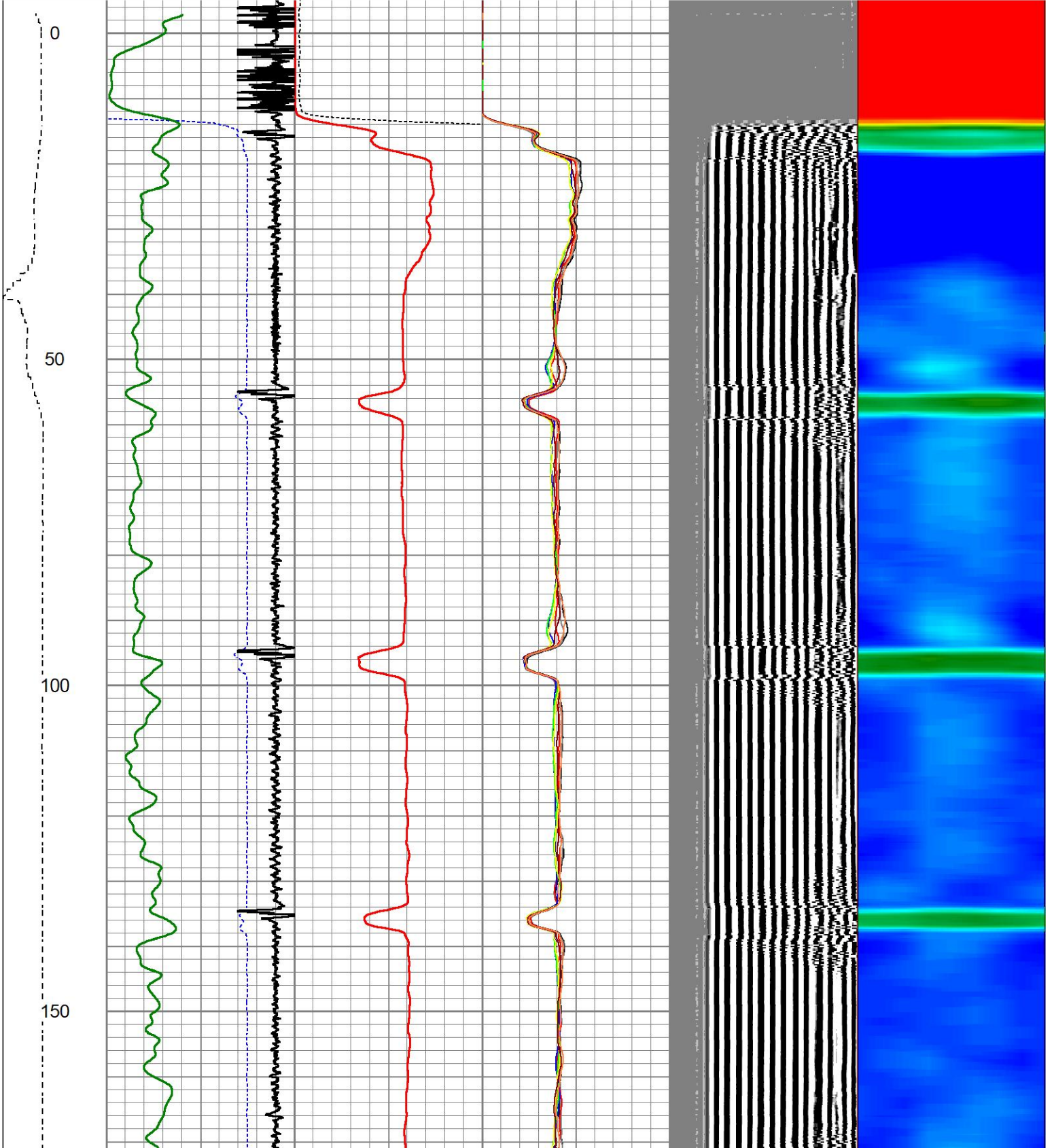
Sensor	Offset (ft)	Schematic	Description	Length (ft)	O.D. (in)	Weight (lb)
			CHD-1_11/16_Cablehead 1 11/16 Cablehead	1.00	1.68	5.00



Dataset: north platte j-f-28hz rbl civi.db: field/well/run1/pass7
 Total length: 20.93 ft
 Total weight: 130.00 lb
 O.D.: 2.75 in

Database File north platte j-f-28hz rbl civi.db
 Dataset Pathname pass7
 Presentation Format ips_rbtcolorcivitas
 Dataset Creation Fri May 16 08:01:51 2025
 Charted by Depth in Foot scaled 1:240

LSPD	650	TT (usec)	150	0	AMP (mV)	100	0	AMPS1	150	200	VDL (usec)	1200	1	Cement Map	8
(ft/min)	-9	CCL	1	Amplified Amplitude		0	0	AMPS2	150						
0	250	0	GR (GAPI)	200	0	(mV)	20	0	AMPS3	150					
		200	GR (GAPI)	400				0	AMPS4	150					
								0	AMPS5	150					
								0	AMPS6	150					
								0	AMPS7	150					
								0	AMPS8	150					

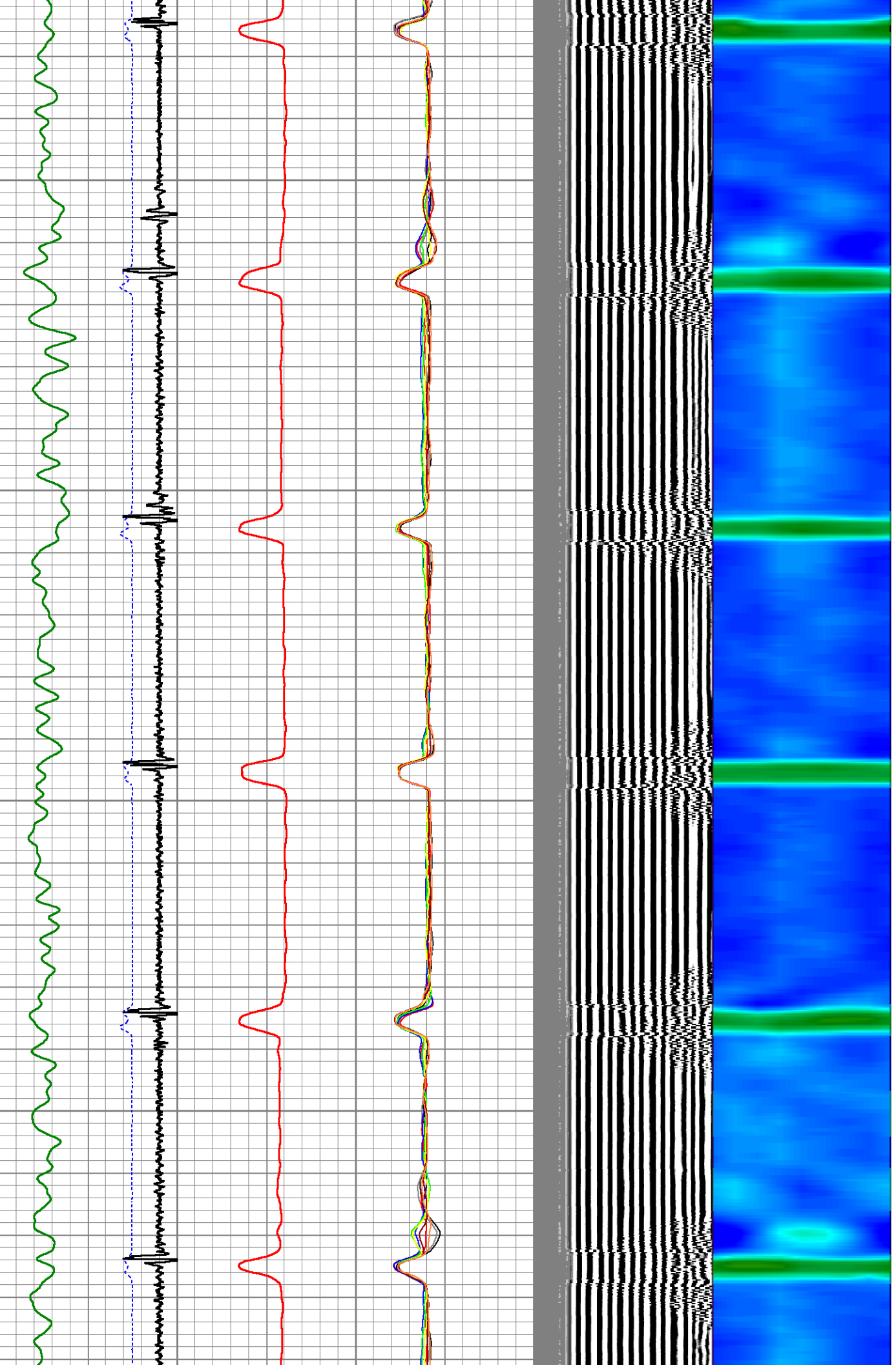


200

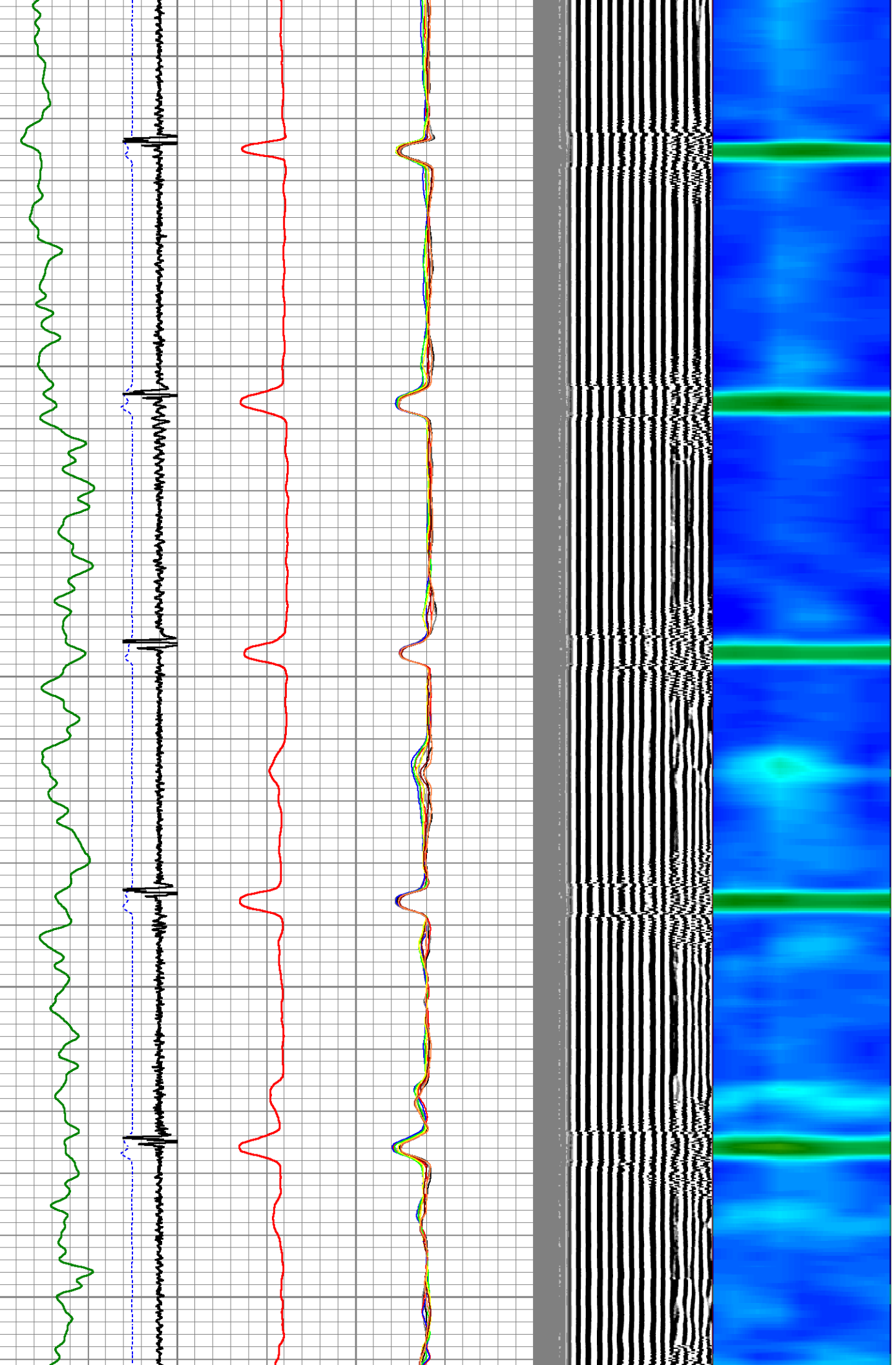
250

300

350



400
450
500
550
600

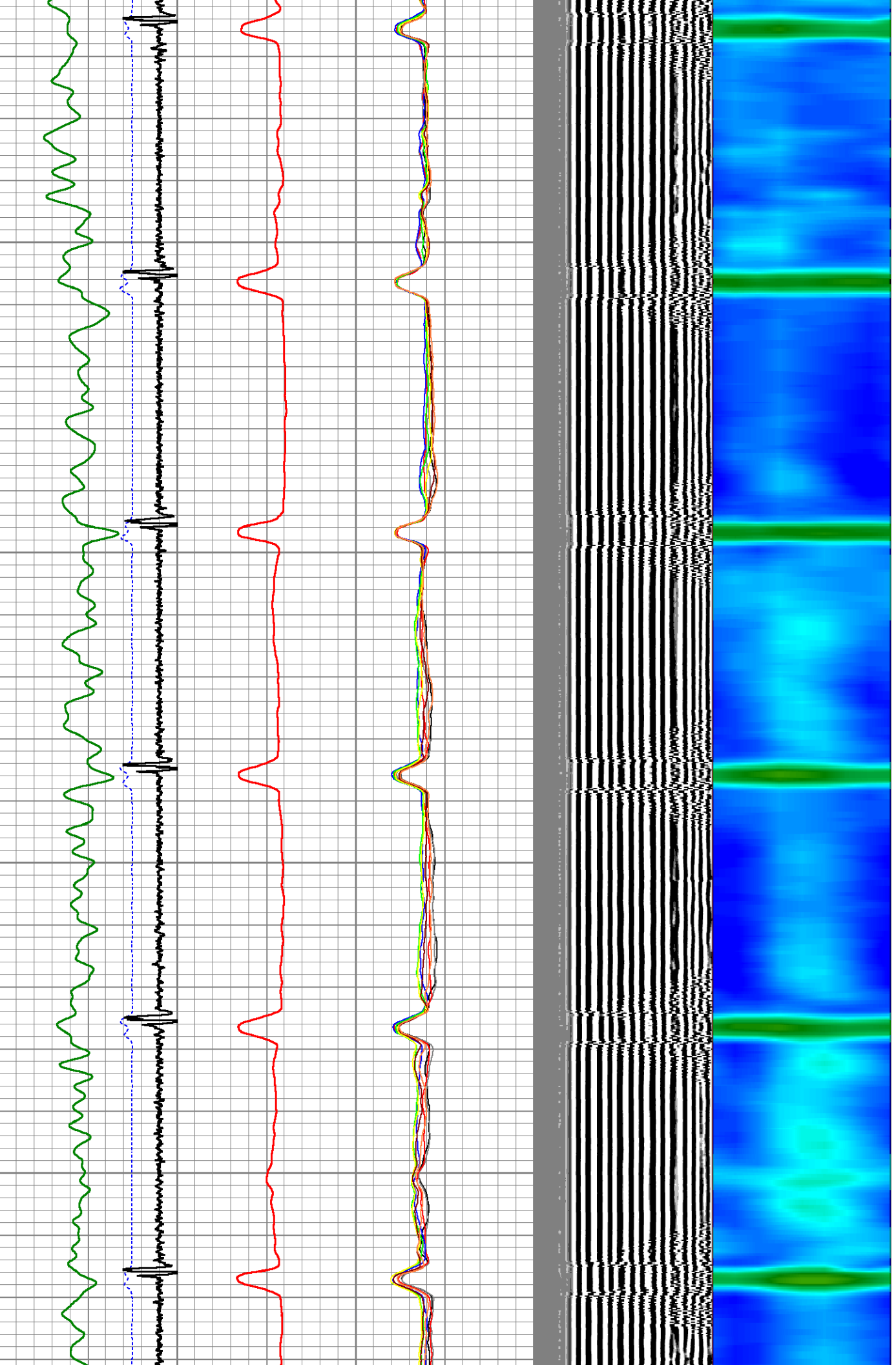


650

700

750

800



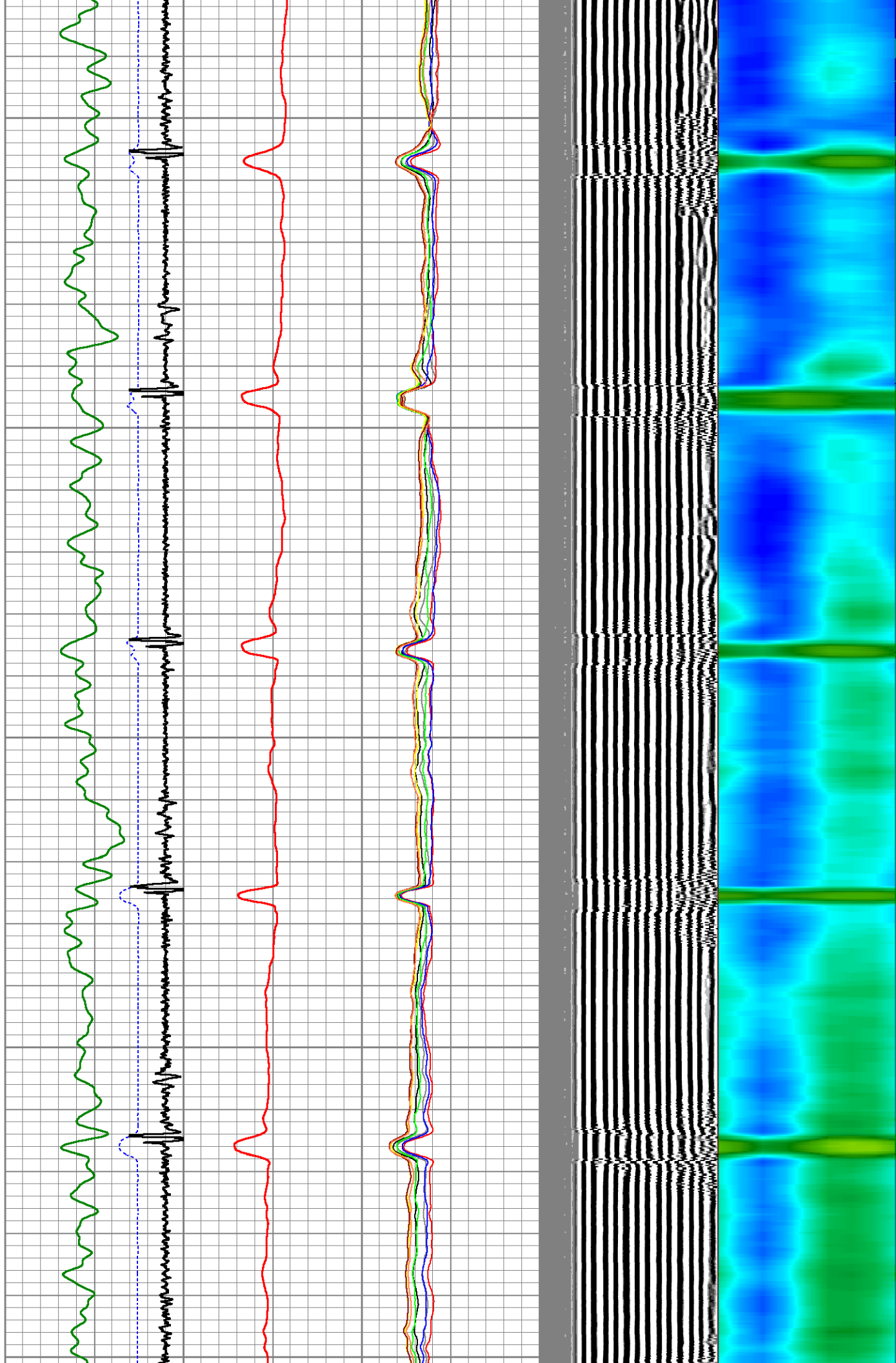
850

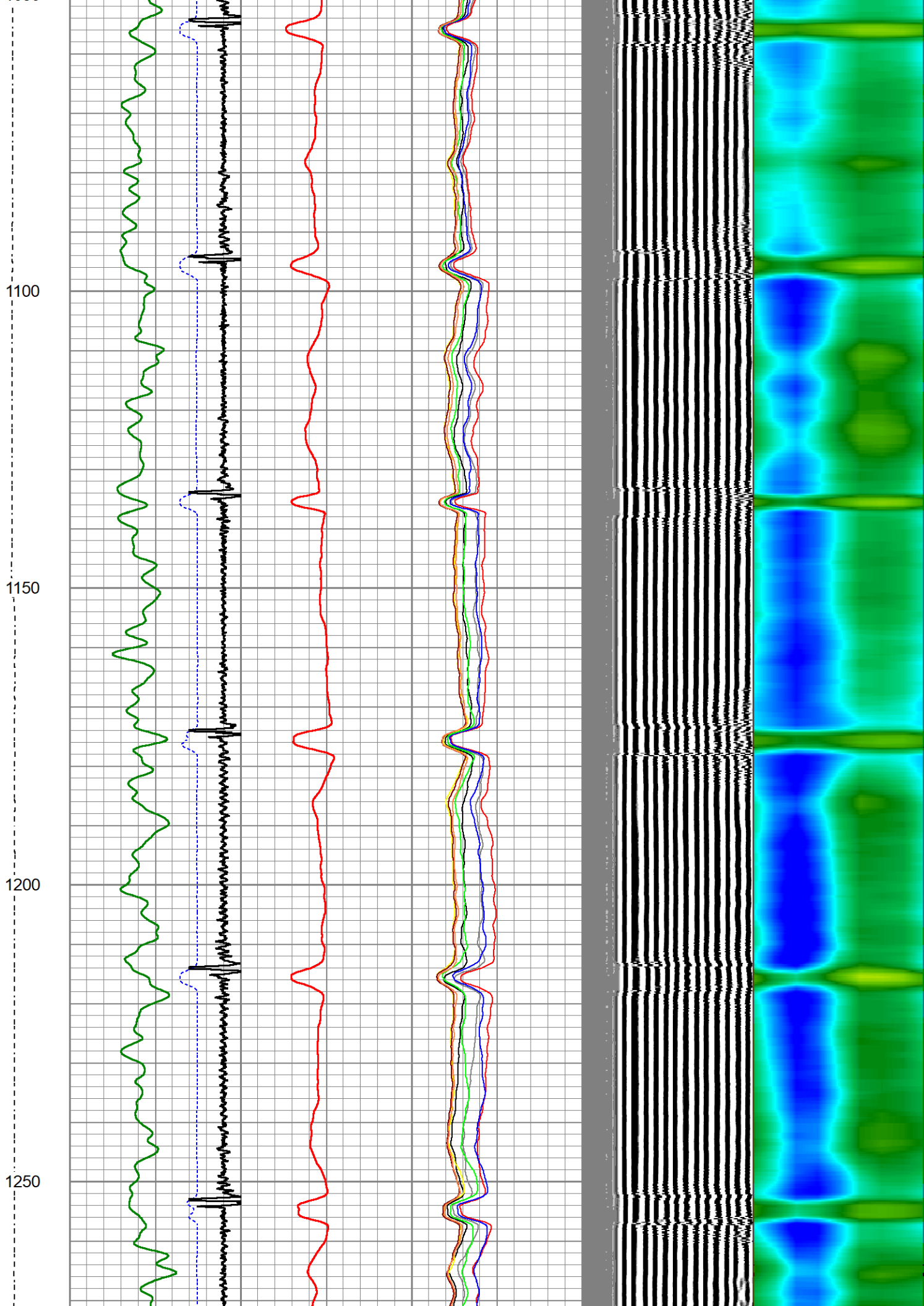
900

950

1000

1050



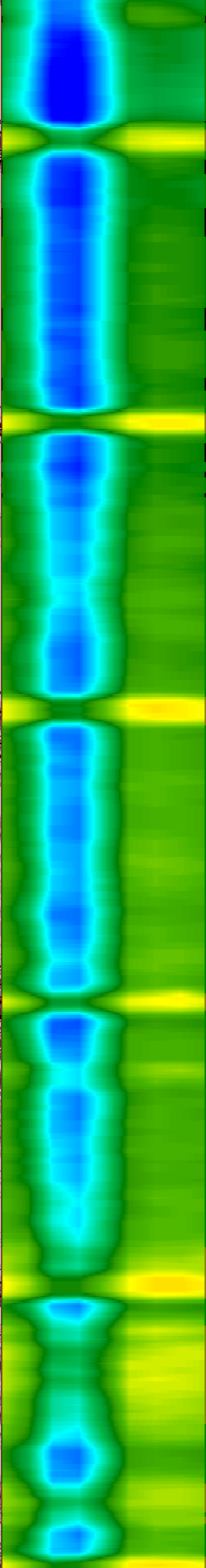
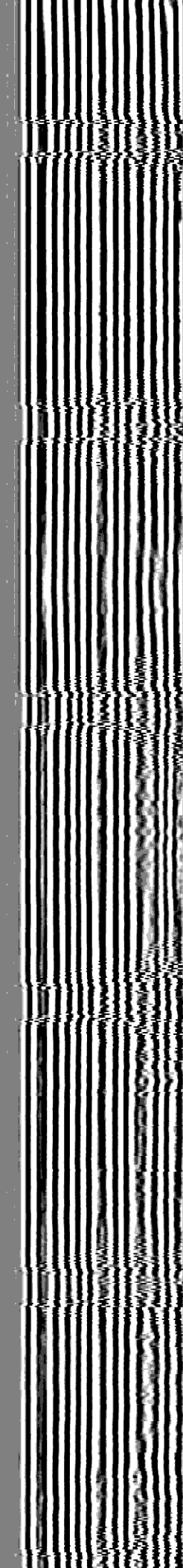
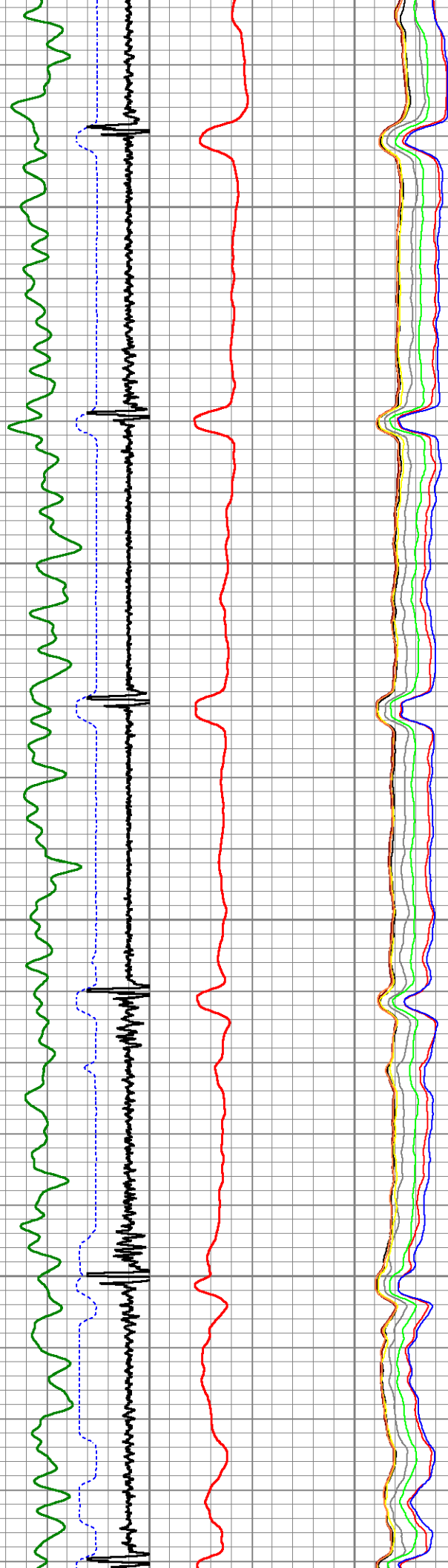


1300

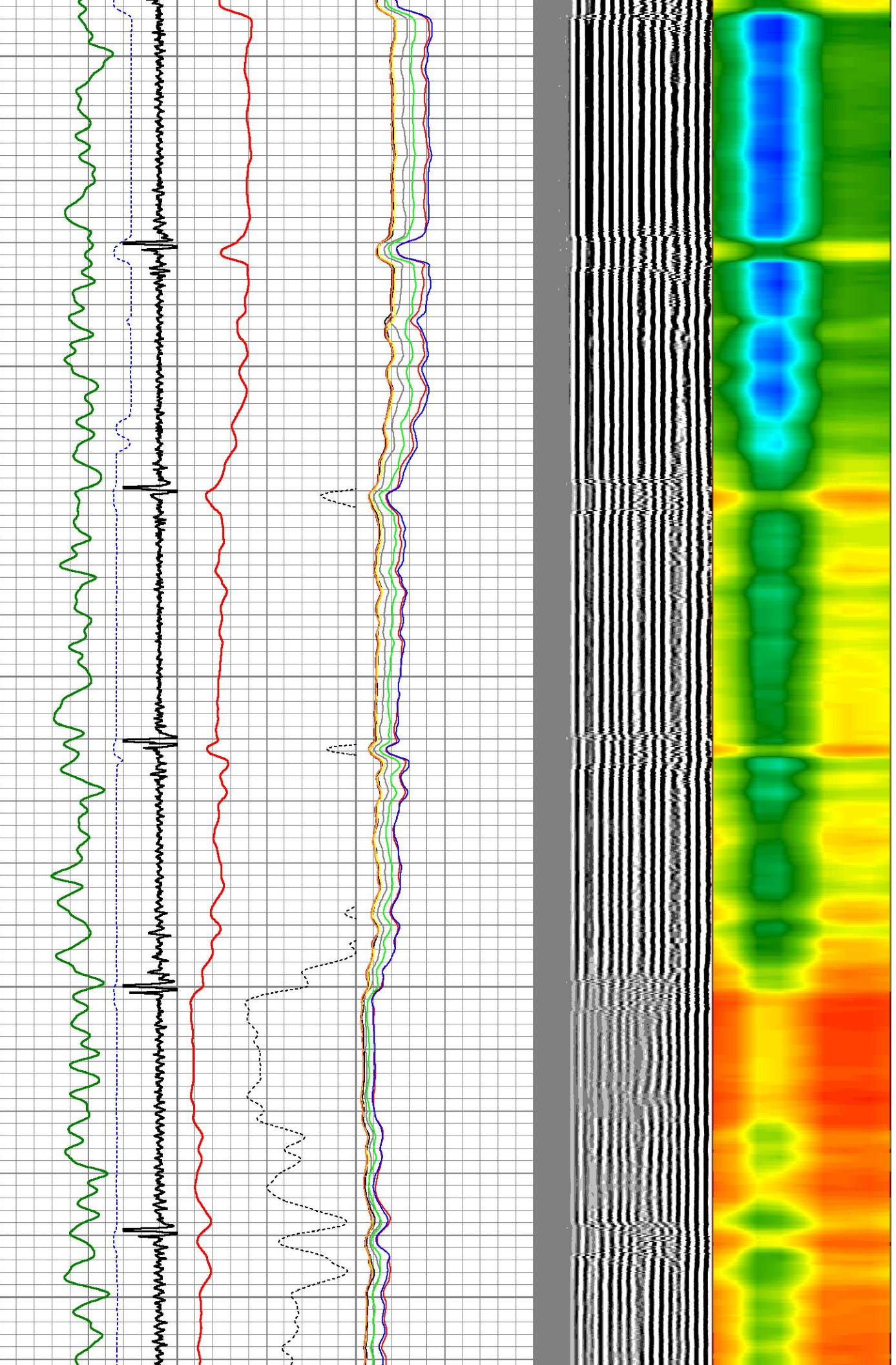
1350

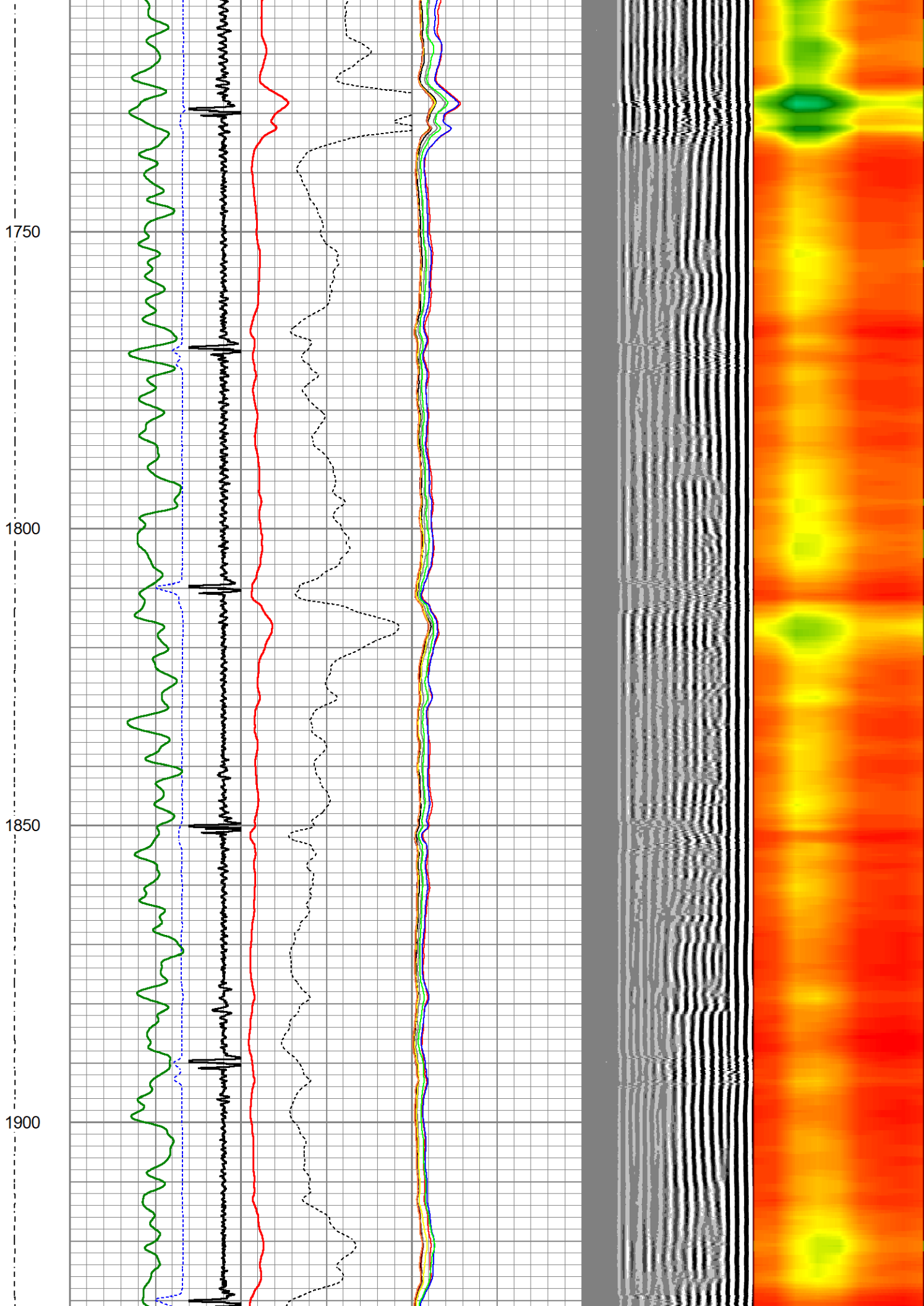
1400

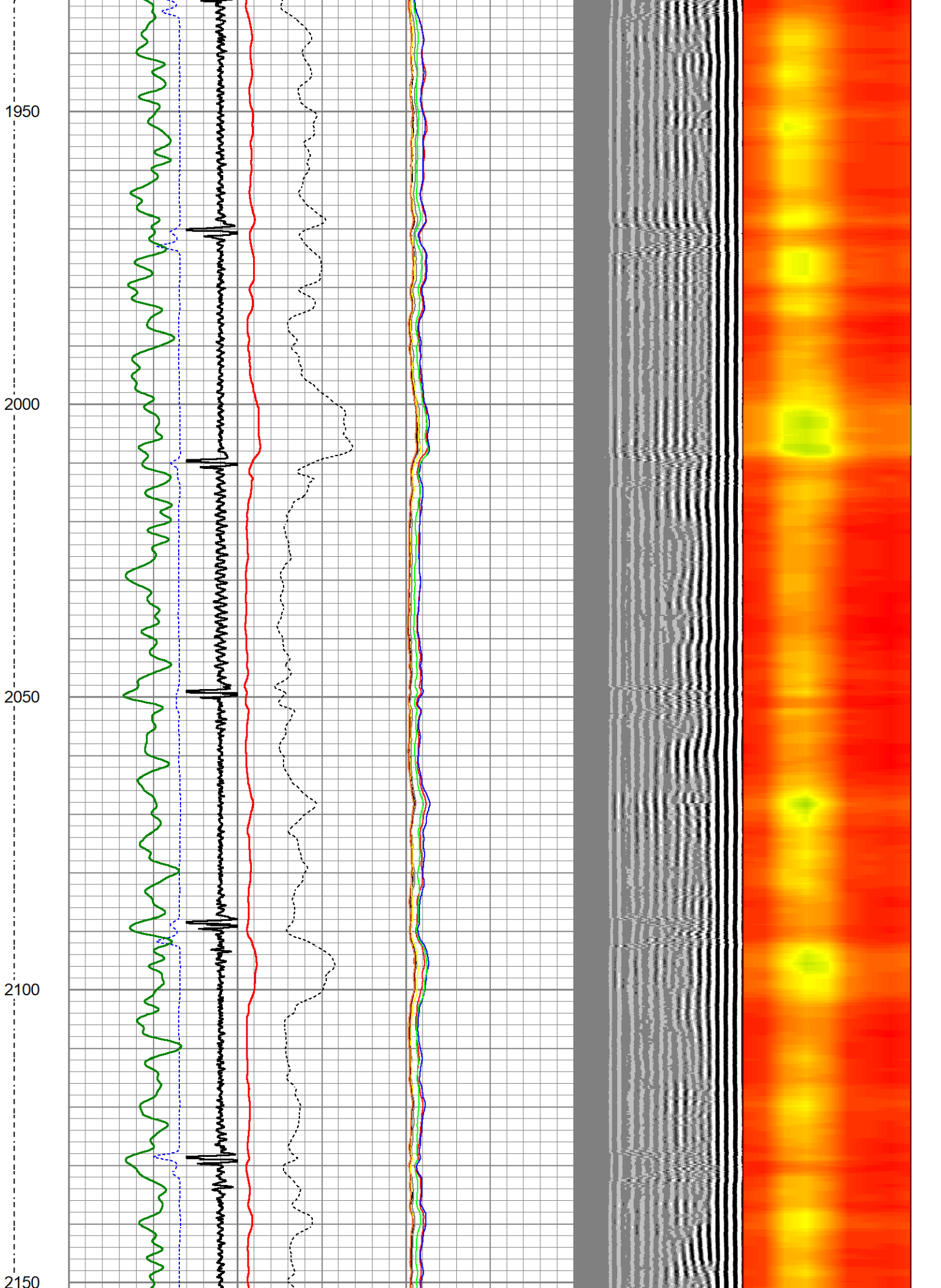
1450

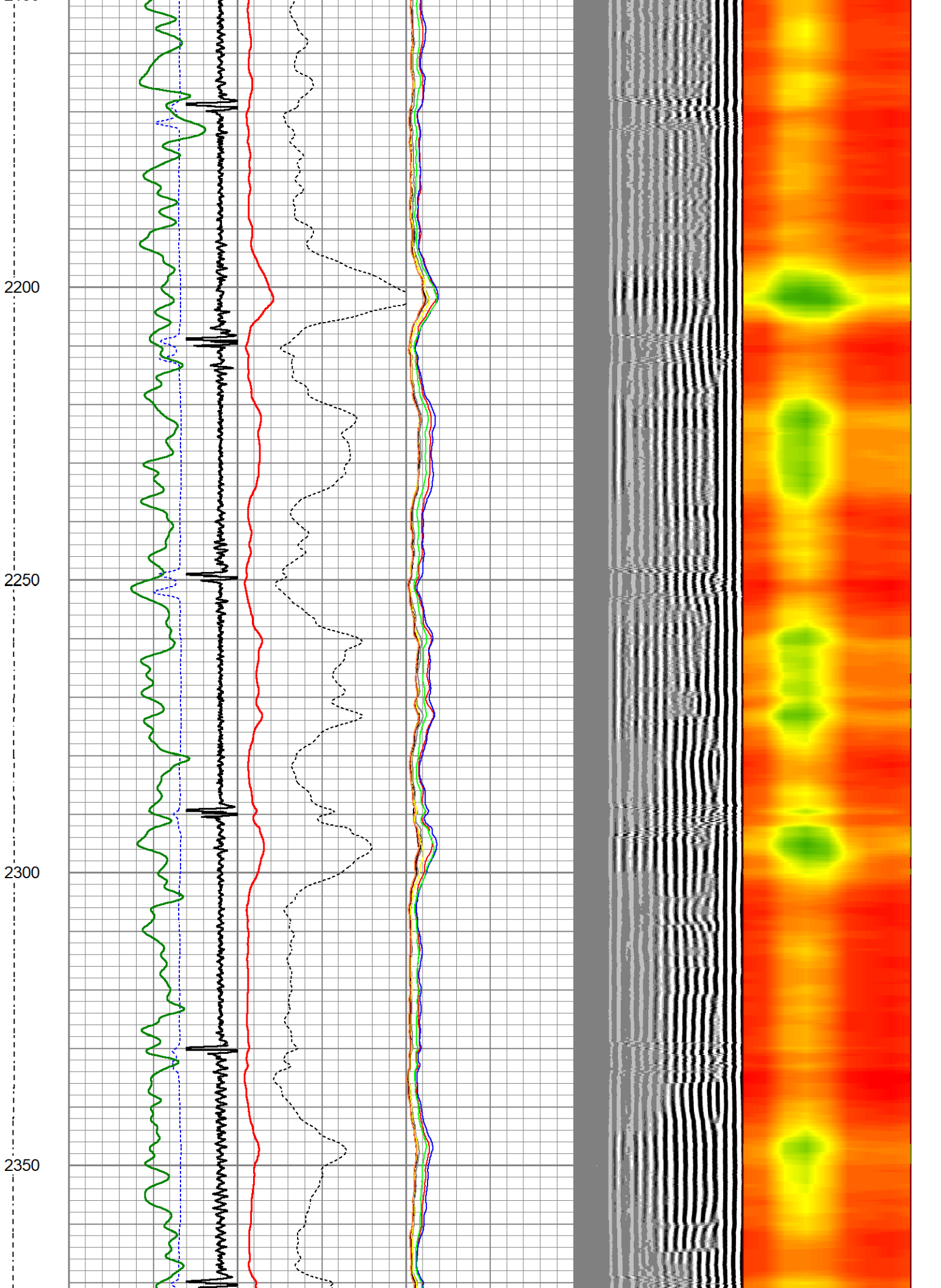


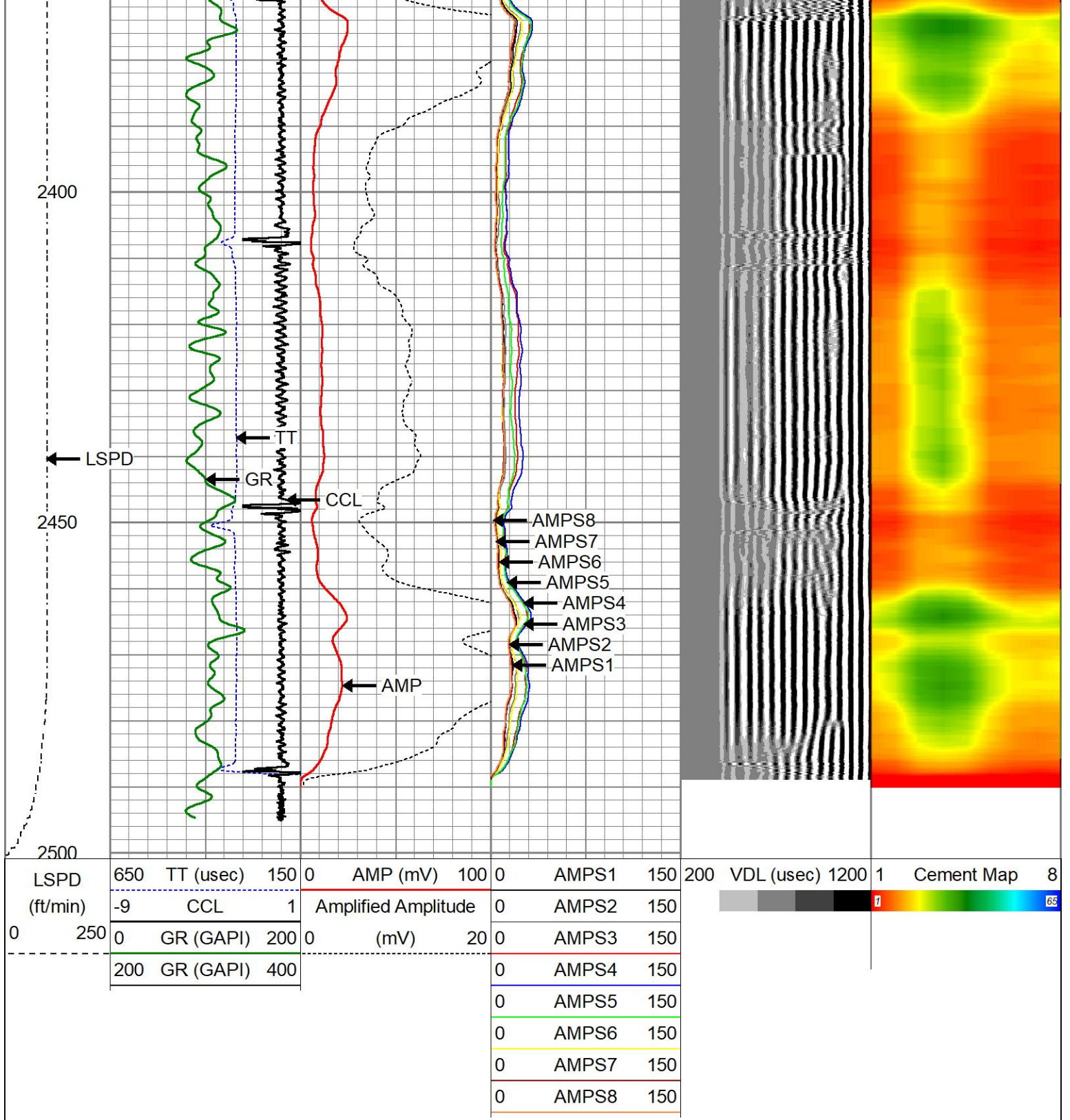
1500
1550
1600
1650
1700











Calibration Report

Database File north platte j-f-28hz rbl civi.db
 Dataset Pathname pass7
 Dataset Creation Fri May 16 08:01:51 2025

Gamma Ray Calibration Report

Serial Number: 27GRL10-XXXX
 Tool Model: 27GRL10
 Performed: (Not Performed)

Calibrator Value: 1.0 GAPI

Background Reading: 0.0

Background Reading: 0.0 cps
 Calibrator Reading: 1.0 cps
 Sensitivity: 1.0000 GAPI/cps

Segmented Cement Bond Log Calibration Report

Serial Number: Greeley Ext Temp 7
 Tool Model: 27SBT10

Calibration Casing Diameter: 7.000 in
 Calibration Depth: 48.635 ft

Master Calibration, performed Fri May 16 07:52:44 2025:

	Raw (v)		Calibrated (mv)		Results	
	Zero	Cal	Zero	Cal	Gain	Offset
3'	0.008	0.999	0.800	62.165	61.924	0.278
CAL	1.889	1.137				
5'	0.016	0.989	0.800	62.165	63.051	-0.181
SUM						
S1	0.015	0.959	0.000	62.165	65.899	-1.008
S2	0.020	0.955	0.000	62.165	66.490	-1.321
S3	0.007	0.875	0.000	62.165	71.617	-0.517
S4	0.012	0.978	0.000	62.165	64.398	-0.796
S5	0.008	1.037	0.000	62.165	60.433	-0.512
S6	0.015	1.032	0.000	62.165	61.121	-0.917
S7	0.014	0.950	0.000	62.165	66.395	-0.915
S8	0.027	0.932	0.000	62.165	68.733	-1.884

Internal Reference Calibration, performed (Not Performed):

	Raw (v)		Calibrated (v)		Results	
	Zero	Cal	Zero	Cal	Gain	Offset
CAL	0.000	0.000	1.889	1.137	1.000	0.000

Air Zero Calibration, performed Fri May 16 07:43:04 2025:

	Raw (v)		Calibrated (v)		Results	
	Zero		Zero		Gain	Offset
3'	0.000		0.000			0.000
5'	0.000		0.000			0.000
SUM						
S1	0.000		0.000			0.000
S2	0.000		0.000			0.000
S3	0.000		0.000			0.000
S4	0.000		0.000			0.000
S5	0.000		0.000			0.000
S6	0.000		0.000			0.000
S7	0.000		0.000			0.000
S8	0.000		0.000			0.000



Company CIVITAS RESOURCES
 Well NORTH PLATTE J-F-28HZ
 Field WATTENBERG
 County WELD

ENERGY SERVICES

State

COLORADO

Country

U.S.A.