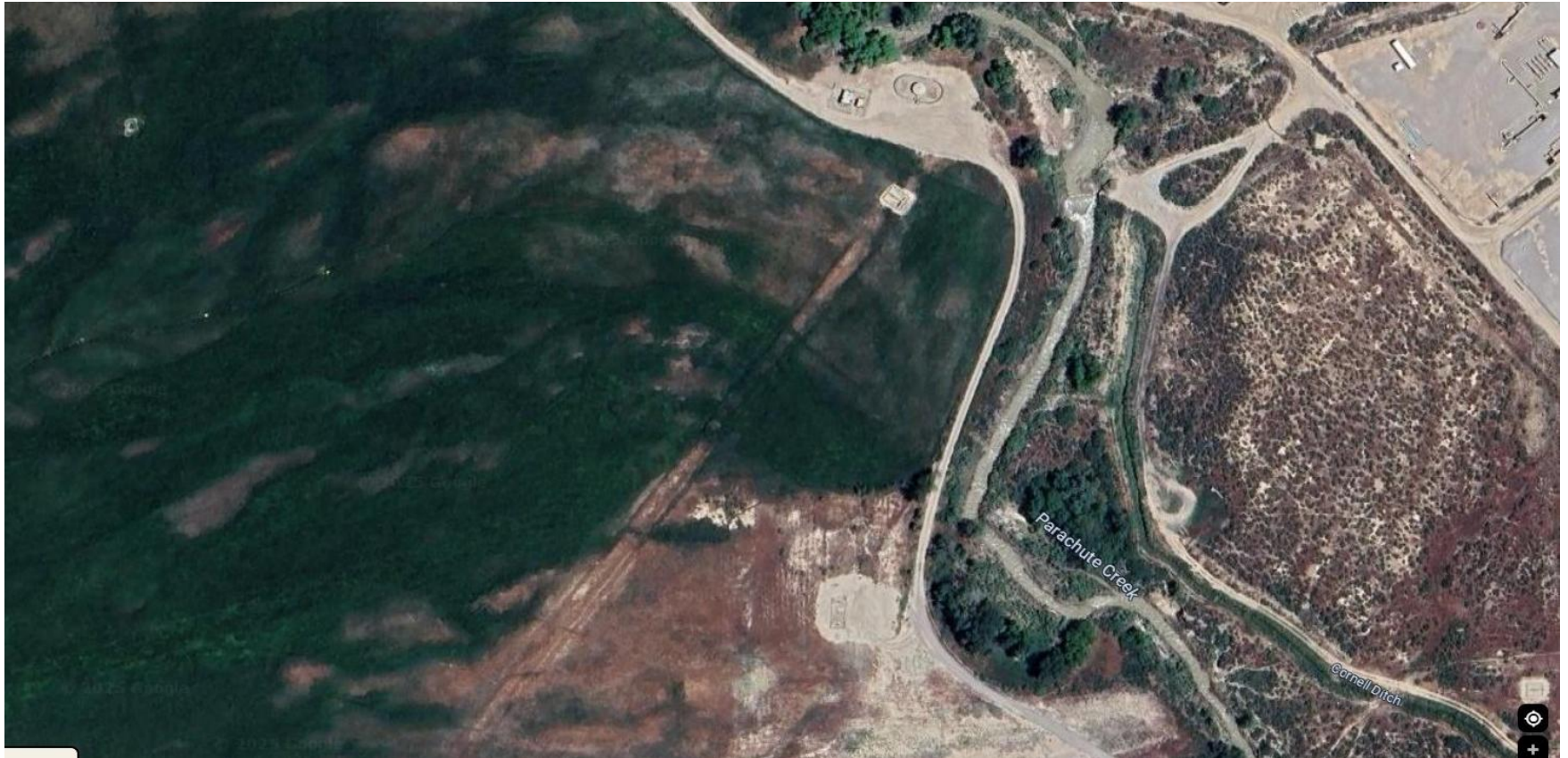


Storm Water Management and Erosion control
Location Name: TEP ROCKY MOUNTAIN LLC UNOCAL GM 22-2 Pad
Location ID: 323962



Location Overview: Location is within High Priority/Density/NSO/Black Bear Habitat areas. Location is approximately 30 yards from Parachute Creek.
Section/Township/Range: 2 7S96W

Storm water Management and Erosion control
Location Name: TEP ROCKY MOUNTAIN LLC UNOCAL GM 22-2 Pad
Location ID: 323962



North West corner of location.



North East corner of location.



South West corner of location.



South East corner of location.

Storm Water Management and Erosion control
Location Name: TEP ROCKY MOUNTAIN LLC UNOCAL GM 22-2 Pad
Location ID: 323962

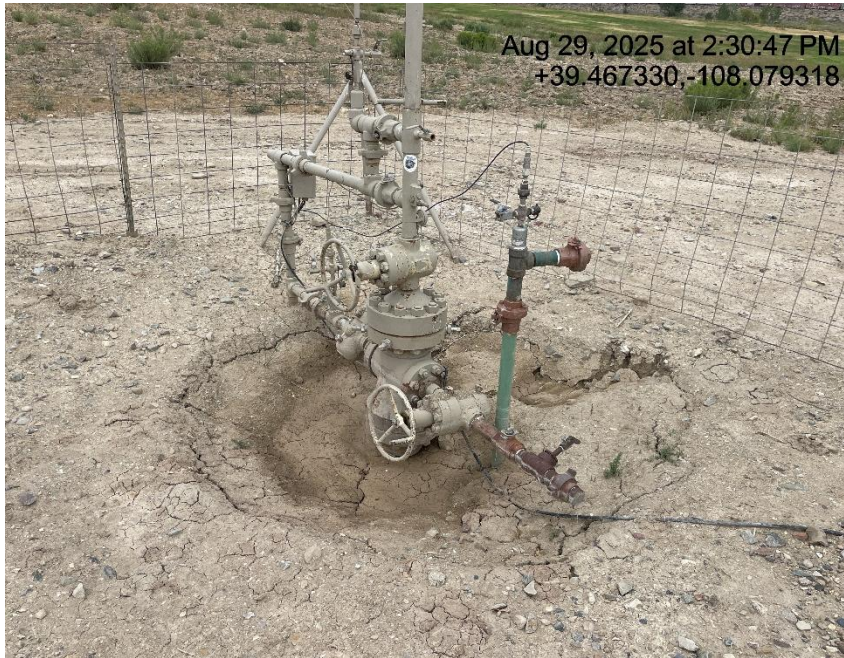


Photo # 4770 Subsidence starting to form around GM 22-2 wellhead