



ENSOLUM

Environmental, Engineering and
Hydrogeologic Consultants

RELEASE ASSESSMENT

Location:

**Antelope 18I TB
40.395910, -104.359340
Weld County, Colorado**

August 29, 2025
Ensolum Project No. 09C2407054

Prepared for:

**Civitas, LLC
650 Southgate Drive | Windsor, CO | 80550
Attn: Mr. Seth Robinson**

Appendix A: Figures

Figure 1: Topographic Map

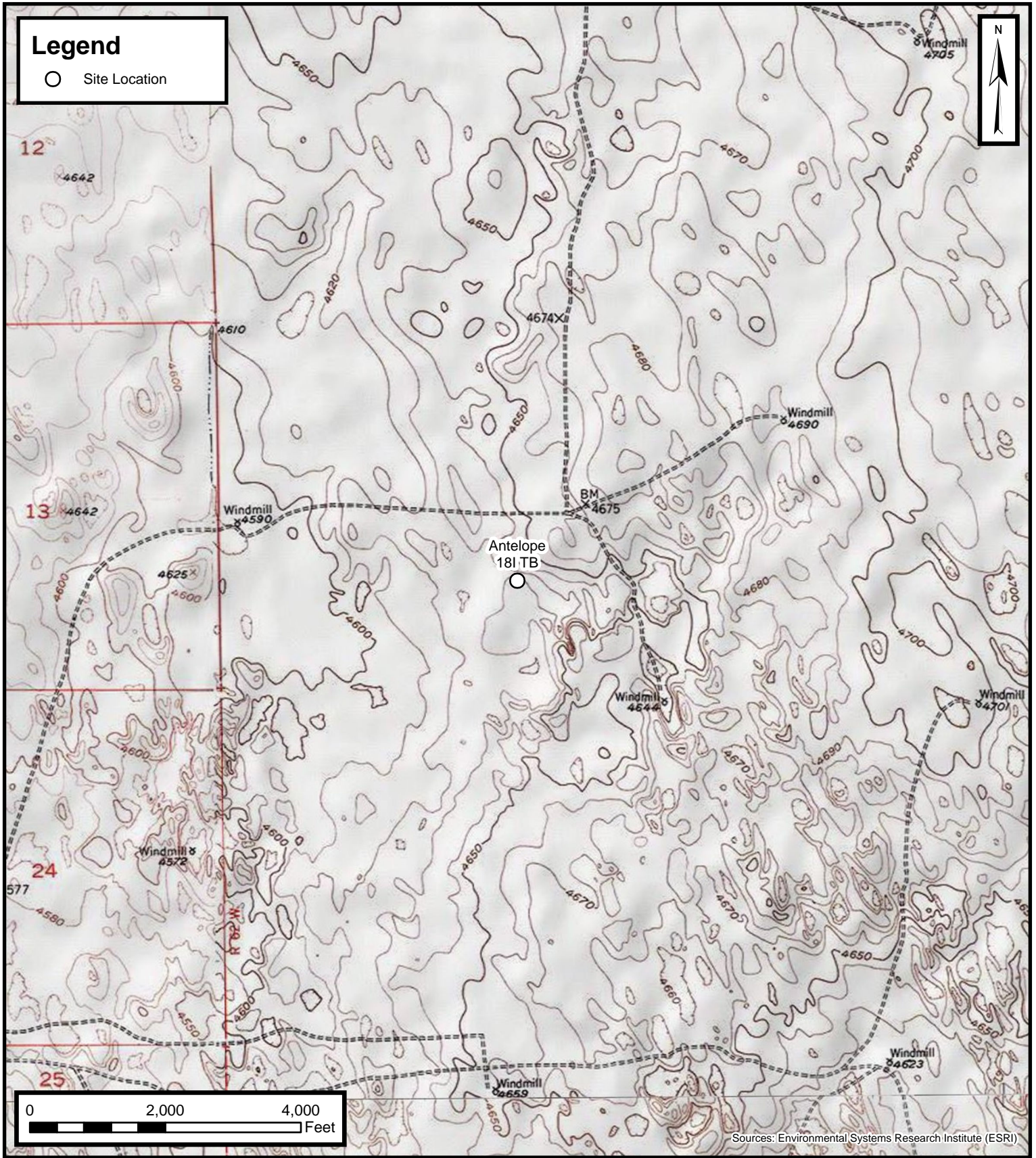
Figure 2: Aerial Site Location Map

APPENDIX A

Figures

Legend

○ Site Location



Default Folder: C:\Users\Maregan\Tao\OneDrive - ENSOLUM, LLC\Ensolum GIS\0 - Projects\BONANZA CREEK ENERGY OPERATING COMPANY, LLC\09C2407106 - Antelope 181 TB



Topographic Map

Antelope 181 TB
BONANZA CREEK ENERGY OPERATING COMPANY LLC
40.395910, -104.359340
Weld County, CO

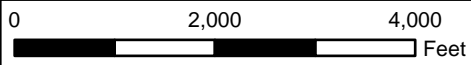
Project Number: 09C2407106

FIGURE

1

Legend

○ Site Location selection



Sources: Environmental Systems Research Institute (ESRI)



Aerial Site Location Map

Antelope 181 TB
BONANZA CREEK ENERGY OPERATING COMPANY LLC
40.395910, -104.359340
Weld County, CO

Project Number: 09C2407106

**FIGURE
2**