

LEGEND:

- = SURFACE HOLE LOCATION (SHL). ⬠ = FEDERAL LEASE CROSSING (FLC).
- ◆ = TOP OF GAS INTERVAL (TGI). ▲ = SECTION CORNER LOCATED (NAD 83).
- = BOTTOM HOLE LOCATION (BHL).

1939 Brass Cap,
1.0' High, Mound of
Stones
Lat: 39.942641°
Long: -108.277890°

1939 Brass Cap
Lat: 39.942634°
Long: -108.268088°

1938 Brass Cap
Lat: 39.942624°
Long: -108.258292°

NOTE:
Distances referenced
on plat to section lines
are perpendicular.

BASIS OF BEARINGS
N00°22'43"W - 2670.67' (Meas.)

N00°26'42"W - 2644.60' (Meas.)

1939 Brass Cap,
1.6' High, Mound of
Stones, T-Post
Lat: 39.935312°
Long: -108.277825°

1938 Brass Cap
Lat: 39.935367°
Long: -108.258218°

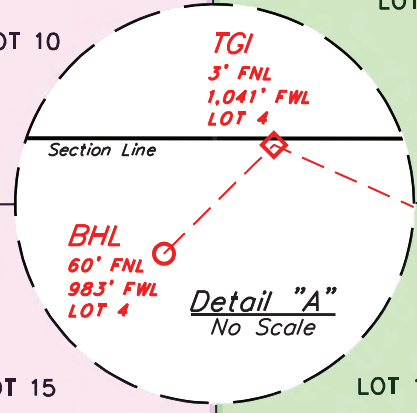
1939 Brass Cap,
0.4' High, Mound of
Stones
Lat: 39.927978°
Long: -108.277756°

N00°27'38"W - 2663.19' (Meas.)

NOTE:
THE PLANNED TOP OF GAS INTERVAL
FOR THIS WELL BEARS N66°26'12"W
1548.07' FROM THE PLANNED
SURFACE HOLE LOCATION.

THE PLANNED BOTTOM HOLE
LOCATION FOR THIS WELL BEARS
S45°17'20"W 80.50' FROM THE
PLANNED TOP OF GAS INTERVAL AND
N69°09'00"W 1579.63' FROM THE
PLANNED SURFACE HOLE LOCATION.

DRILL PATH HAS BEEN PROVIDED BY
QB ENERGY.



PDOP = 1.5

UNGRADED GROUND ELEVATION = 6524.8'

NAD 83 (SURFACE HOLE LOCATION)	NAD 83 (TOP OF GAS INTERVAL)
LATITUDE = 39°56'27.36" (39.940932°)	LATITUDE = 39°56'33.47" (39.942629°)
LONGITUDE = -108°16'08.84" (-108.269121°)	LONGITUDE = -108°16'27.05" (-108.274181°)
NAD 27 (SURFACE HOLE LOCATION)	NAD 27 (TOP OF GAS INTERVAL)
LATITUDE = 39°56'27.46" (39.940960°)	LATITUDE = 39°56'33.57" (39.942657°)
LONGITUDE = -108°16'06.52" (-108.268479°)	LONGITUDE = -108°16'24.74" (-108.273538°)
UTM, NAD 27 (ZONE 12)	UTM, NAD 27 (ZONE 12)
N: 14516268.59' E: 2406111.71'	N: 14516843.36' E: 2404674.43'

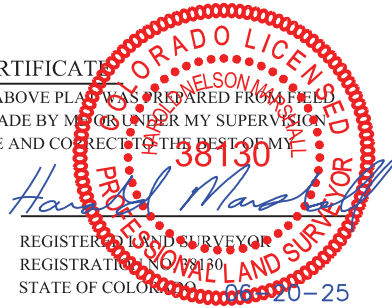
NAD 83 (BOTTOM HOLE LOCATION)	NAD 27 (BOTTOM HOLE LOCATION)
LATITUDE = 39°56'32.91" (39.942474°)	LATITUDE = 39°56'33.01" (39.942502°)
LONGITUDE = -108°16'27.78" (-108.274385°)	LONGITUDE = -108°16'25.47" (-108.273742°)
UTM, NAD 27 (ZONE 12)	
N: 14516785.00' E: 2404619.00'	

1939 Brass Cap
Lat: 39.928034°
Long: -108.267951°

1938 Brass Cap
Lat: 39.928059°
Long: -108.258141°

CERTIFICATE

THIS IS TO CERTIFY THAT THE ABOVE PLAT WAS PREPARED FROM THE NOTES OF ACTUAL SURVEYS MADE BY ME OR UNDER MY SUPERVISION AND THAT THE SAME ARE TRUE AND CORRECT TO THE BEST OF MY KNOWLEDGE AND BELIEF.



REV: 5 06-20-25 D.P. (UPDATE WELLBORE)

BASIS OF BEARINGS

BEARINGS ARE A BASED ASSUMPTION THAT THE WEST LINE OF THE NORTHWEST 1/4 OF SECTION 27 BEARS N00°22'43"W. MONUMENTS DESCRIBED HEREON.

BASIS OF ELEVATION

BENCH MARK (MR 25) LOCATED IN THE NE 1/4 OF SECTION 25, T2S, R99W, 6th P.M., TAKEN FROM THE YANKEE GULCH QUADRANGLE, COLORADO, RIO BLANCO, 7.5 MINUTE SERIES (TOPOGRAPHIC MAP) PUBLISHED BY THE UNITED STATES DEPARTMENT OF THE INTERIOR, GEOLOGICAL SURVEY. SAID ELEVATION IS MARKED AS BEING 6971 FEET.



UELS, LLC
Corporate Office * 85 South 200 East
Vernal, UT 84078 * (435) 789-1017

QB ENERGY

PCU B27 FED 11B-27 197
LOT 3, SECTION 27, T1S, R97W, 6th P.M.
RIO BLANCO COUNTY, COLORADO

SURVEYED BY	BART HUNTING, J.L.	09-12-22	SCALE
DRAWN BY	T.L.L.	11-08-22	1" = 1000'

WELL LOCATION PLAT