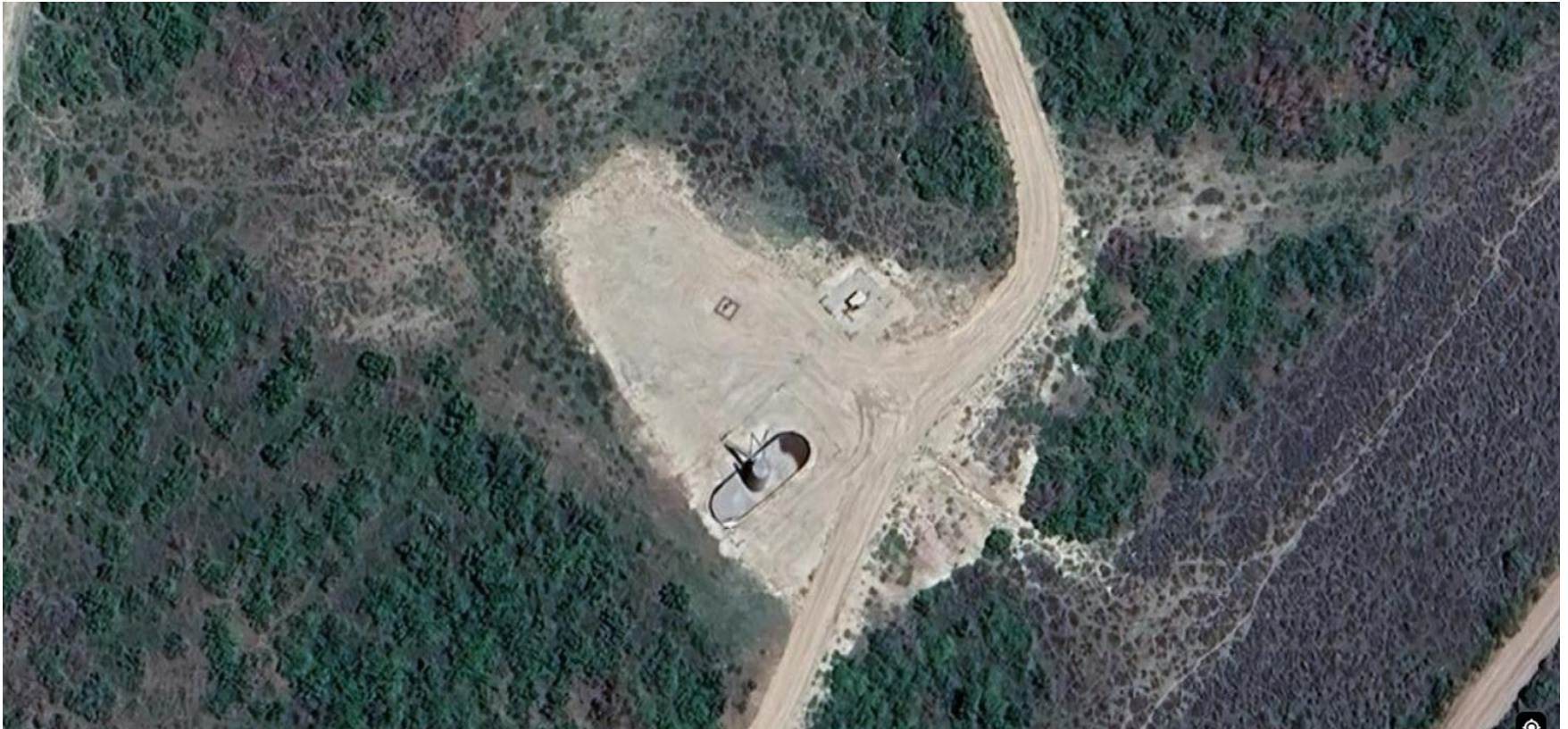


**Storm Water Management and Erosion control**  
**Location Name: QB ENERGY OPERATING LLC PUCKETT 218-25 Pad**  
**Location #: 324201**



**Location Overview: Location is within High Priority/Black Bear  
Habitat areas/Greater Sage Grouse General Habitat  
Management Area & in close proximity to Density Habitat  
area.**

**Section/Township/Range: 25 6S97W**

**Storm water Management and Erosion control**  
**Location Name: QB ENERGY OPERATING LLC PUCKETT 218-25 Pad**  
**Location #: 324201**



**North West corner of location.**



**North East corner of location.**



**South West corner of location.**



**South East corner of location.**