

# DOE 1-M-25 Wellbore Diagram

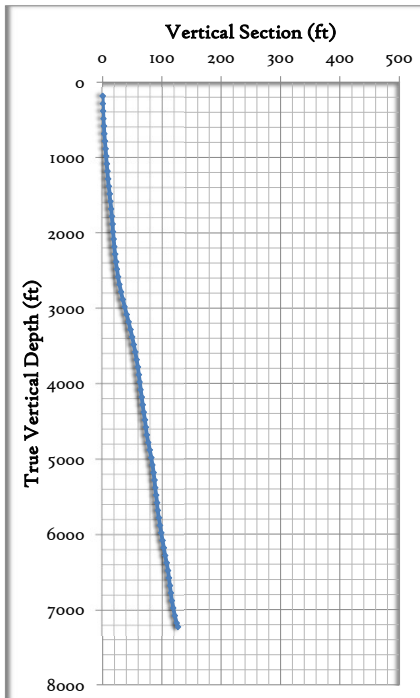
Last Updated: 8/27/2025



Well	County		API		
DOE 1-M-25	Garfield		05-045-06987		
Location	Spud Date	PBTD	TD	Surf TOC	
SWSW 25 6S96W	6/23/1995	7,695	7,965	0	
Mineral/Surface	Lease #	Top Perf	Bot Perf	Prod TOC	
FED	12580	5,728	7,125	2,800	

Wellbore details				
CASING DETAIL	Depth	Size	Weight	Grade
Conductor Csg	40	0	0.0	
Cement	NA			
Hole size	Notes:			
	Depth	Size	Weight	Grade
Surface Csg	329	9 5/8	36.0	
Cement	150SKS and 209SKS squeeze at 2800'			
Hole size	9 5/8 Notes:			
	Depth	Size	Weight	Grade
Prod Csg	7,668	4 1/2	12.1	N-80
Cement	860SKS			
Hole size	4 1/2 Notes:			
KB	14			
TUBING DETAIL	Depth	Size	Weight	Grade
Current EOT	7,138	2 3/8	4.70	J-55
	101%	Notes:		

Formation Top	Depth (ft)
MesaVerde	4,300



Stages and Perf intervals	Formation Tops	Wellbore Details
		Cond Csg: 0" 0# set @ 40'
		Hole Size:
		Cement: NA
		Surf TOC: 0 CALC
		Surf Csg: 9-5/8" 36# set @ 329'
		Hole Size: 9-5/8"
		Cement: 150SKS and 209SKS
		Prod TOC: 2,800 CBL
		Tubing: 2-3/8" 4.7# J-55 set @ 7138'
		Prod Csg: 4-1/2" 12.1# N-80 set @ 7668'
		Hole Size: 4-1/2"
		Cement: 860SKS
5,728 7,125 MV		
PBTD: 7,695	TD: 7,965	