

TANK BATTERY DECOMMISSIONING REPORT

CECIL-66N64W 12NWNW TANK BATTERY

ECMC REMEDIATION # 39385

Prepared for:



PDC ENERGY

1099 18th Street
Suite 1500
Denver, CO 80202

Prepared by:



4725 Independence Street
Wheat Ridge, CO 80033



DATE: August 25, 2025

DESIGNED BY: J. Whritenour

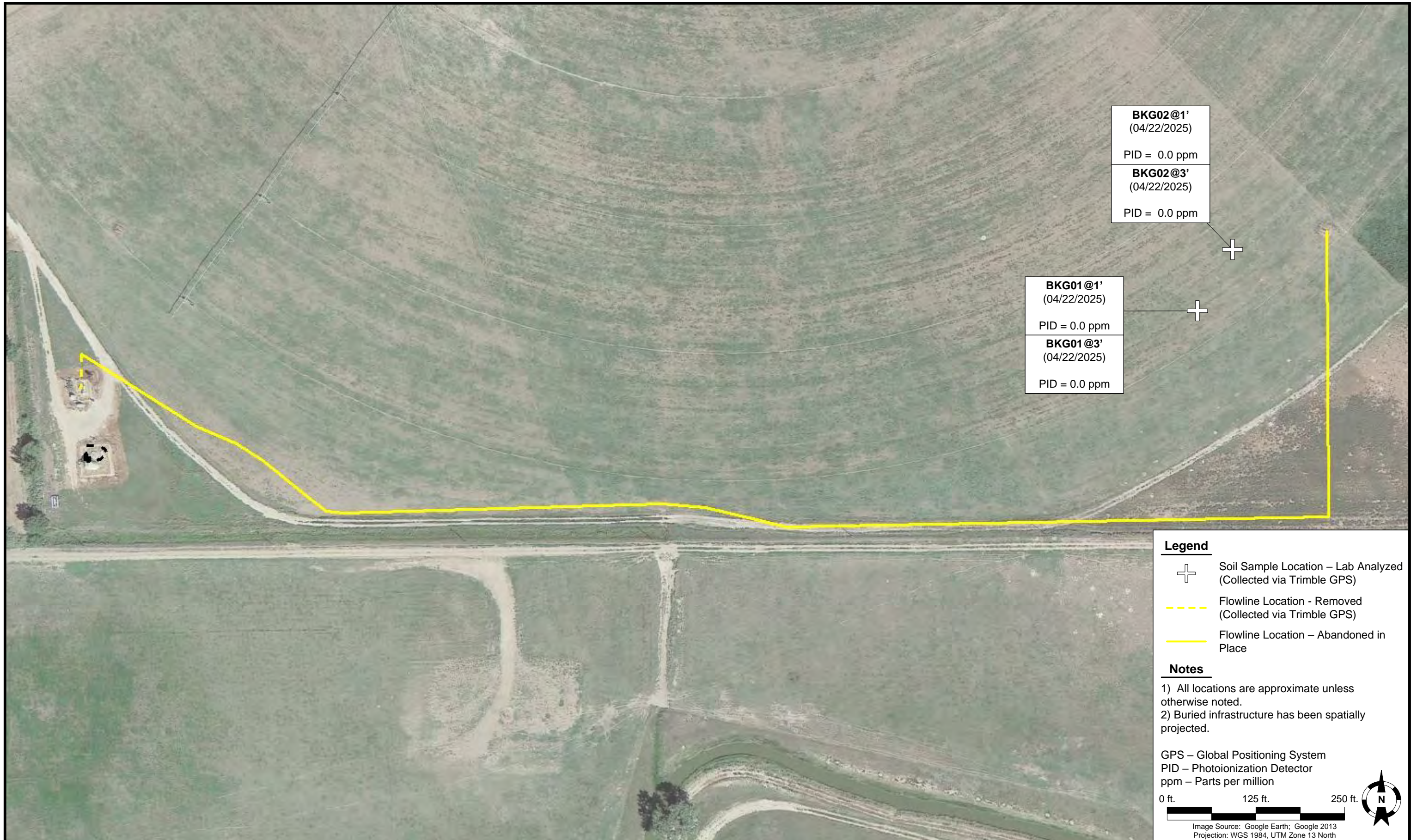
DRAWN BY: R. Yavinsky



PDC Energy, Inc. – 69175 – DJ Basin
Cecil-66N64W 12NWNW Tank Battery
 NWNW, Section 12, Township 6 North, Range 64 West
 Weld County, Colorado

SOIL SAMPLE LOCATION MAP
 (04/22/2025 & 05/30/2025)

FIGURE 1



DATE: August 25, 2025

DESIGNED BY: J. Whritenour

DRAWN BY: R. Yavinsky



Tasman, Inc.
4725 Independence Street
Wheat Ridge, CO 80033

PDC Energy, Inc. – 69175 – DJ Basin
Cecil 21-12 Flowline
NWNW, Section 12, Township 6 North, Range 64 West
Weld County, Colorado

SOIL SAMPLE LOCATION MAP
(04/22/2025)

FIGURE 2



TABLE 1
FIELD DATA SUMMARY TABLE
PDC ENERGY, INC. - 69175
CECIL-66N64W 12NWNW TANK BATTERY, WELD COUNTY, COLORADO
REM # 39385

Sample ID	Sample Date	Depth (ft. bgs)	GPS Data ¹ Latitude/Longitude		PDOP Value	VOC Concentration ² (ppm)
AST01@0-6"	05/30/2025	0-0.5	40.504737	-104.506233	0.8	1.4
FLARE01@0-6"	05/30/2025	0-0.5	40.505033	-104.506210	1.3	0.0
FLARE02@0-6"	05/30/2025	0-0.5	40.505092	-104.506220	1.0	0.0
MH01@0-6"	05/30/2025	0-0.5	40.505028	-104.506318	0.8	0.0
PWV01-N@2'	05/30/2025	2	40.504808	-104.506228	NC	1.0
PWV02-N@2'	05/30/2025	2	40.504807	-104.506188	NC	1.3
PWV01-E@2'	05/30/2025	2	40.504801	-104.506152	0.8	0.8
PWV02-W@2'	05/30/2025	2	40.504780	-104.506247	0.8	8.7
PWV01-S@2'	05/30/2025	2	40.504774	-104.506170	0.8	1.9
PWV02-S@2'	05/30/2025	2	40.504770	-104.506217	0.8	1.0
PWV02-B@5'	05/30/2025	5	40.504788	-104.506220	NC	0.4
PWV01-B@5'	05/30/2025	5	40.504793	-104.506185	NC	1.0
PWV02-B2@5'	05/30/2025	5	40.504769	-104.506245	NC	1.1
PWV02-W2@2'	05/30/2025	2	40.504767	-104.506255	0.9	0.7
SEP01-DL@4'	05/30/2025	4	40.505008	-104.506265	0.8	0.8
BKG01@1' ⁽³⁾	04/22/2025	1	40.505319	-104.500616	0.8	0.0
BKG01@3' ⁽³⁾	04/22/2025	3	40.505319	-104.500616	0.8	0.0
BKG02@1' ⁽³⁾	04/22/2025	1	40.505556	-104.500436	0.8	0.0
BKG02@3' ⁽³⁾	04/22/2025	3	40.505556	-104.500436	0.8	0.0
BKG01@1-2'	05/30/2025	1-2	40.504931	-104.505982	1.5	0.0
BKG01@2-3'	05/30/2025	2-3	40.504931	-104.505982	1.5	0.0
BKG01@4-5'	05/30/2025	4-5	40.504931	-104.505982	1.5	0.0
BKG02@1-2'	05/30/2025	1-2	40.504838	-104.505894	1.2	0.0
BKG02@2-3'	05/30/2025	2-3	40.504838	-104.505894	1.2	0.0
BKG02@4-5'	05/30/2025	4-5	40.504838	-104.505894	1.2	0.0

Notes:

1. Global Positioning System (GPS) data is provided in decimal degrees using North American Datum (NAD) 83 UTM Zone 13 North.
2. Volatile organic compound (VOC) concentrations are measured in the field using a photoionization detector (PID).
3. Sample was collected during the decommissioning of the associated CECIL 21-12 Flowline (REM # 39377).

PDOP = Position Dilution of Precision

ppm = Parts per million

ft. = Feet

bgs = Below ground surface

NC = Not collected

NA = Not analyzed

Source material characterization sample, excavated and transported off site for disposal.

Material excavated and transported off site for disposal.

TABLE 2
SUMMARY OF VOLATILE ORGANIC SOIL CHEMISTRY DATA
PDC ENERGY, INC. - 69175
CECIL-66N64W 12NWNW TANK BATTERY, WELD COUNTY, COLORADO
REM # 39385



Sample ID	Sample Date	Depth (ft. bgs)	Benzene (mg/kg)	Toluene (mg/kg)	Ethyl-Benzene (mg/kg)	Xylenes (mg/kg)	1,2,4-Trimethyl-Benzene (mg/kg)	1,3,5-Trimethyl-Benzene (mg/kg)	Naphthalene (mg/kg)	TPH (mg/kg)	TPH GRO (mg/kg)	TPH DRO (mg/kg)	TPH ORO (mg/kg)
ECMC Table 915-1 Limits (Residential SSL)			1.2	490	5.8	58	30	27	2	500	500**		
ECMC Table 915-1 Limits (Protection of Groundwater SSL)			0.0026	0.69	0.78	9.9	0.0081	0.0087	0.0038	500	500**		
AST01@0-6"	05/30/2025	0-0.5	<0.0020	<0.0050	<0.0050	<0.010	<0.0050	<0.0050	<0.0038	<50	<0.50	<50	<50
PWV01-B@5'	05/30/2025	5	<0.0020	<0.0050	<0.0050	<0.010	<0.0050	<0.0050	<0.0038	<50	<0.50	<50	<50
PWV01-E@2'	05/30/2025	2	<0.0020	<0.0050	<0.0050	<0.010	<0.0050	<0.0050	<0.0038	<50	<0.50	<50	<50
PWV01-N@2'	05/30/2025	2	<0.0020	<0.0050	<0.0050	<0.010	<0.0050	<0.0050	<0.0038	<50	<0.50	<50	<50
PWV01-S@2'	05/30/2025	2	<0.0020	<0.0050	<0.0050	<0.010	<0.0050	<0.0050	<0.0038	<50	<0.50	<50	<50
PWV02-B@5'	05/30/2025	5	<0.0020	<0.0050	<0.0050	<0.010	<0.0050	<0.0050	<0.0038	<50	<0.50	<50	<50
PWV02-B2@5'	05/30/2025	5	<0.0020	<0.0050	<0.0050	<0.010	<0.0050	<0.0050	<0.0038	<50	<0.50	<50	<50
PWV02-N@2'	05/30/2025	2	<0.0020	<0.0050	<0.0050	<0.010	<0.0050	<0.0050	<0.0038	<50	<0.50	<50	<50
PWV02-S@2'	05/30/2025	2	<0.0020	<0.0050	<0.0050	<0.010	<0.0050	<0.0050	<0.0038	<50	<0.50	<50	<50
PWV02-W2@2'	05/30/2025	2	<0.0020	<0.0050	<0.0050	<0.010	<0.0050	<0.0050	<0.0038	<50	<0.50	<50	<50
SEP01-DL@4'	05/30/2025	4	<0.0020	<0.0050	<0.0050	<0.010	<0.0050	<0.0050	<0.0038	<50	<0.50	<50	<50

Notes:

- 1. Bold** values exceed the ECMC Table 915-1 limit(s).
- Red & blue highlighted soil analytical values indicate an exceedance of the referenced soil screening level (SSL).
- ** Summation of GRO+DRO+ORO must be less than 500 mg/kg.

ECMC = Energy and Carbon Management Commission

(<) = Analytical result is less than the indicated laboratory reporting limit.

TPH-GRO = Total petroleum hydrocarbons - gasoline range organics

TPH-DRO = Total petroleum hydrocarbons - diesel range organics

TPH-ORO = Total petroleum hydrocarbons - oil range organics

mg/kg = Milligrams per kilogram

ft. = Feet

bgs = Below ground surface

NA = Not analyzed

Source material characterization sample, excavated and transported off site for disposal.

Material excavated and transported off site for disposal.

TABLE 3
SUMMARY OF POLYCYCLIC AROMATIC HYDROCARBON SOIL CHEMISTRY DATA
PDC ENERGY, INC. - 69175
CECIL-66N64W 12NWNW TANK BATTERY, WELD COUNTY, COLORADO
REM # 39385



Sample ID	Sample Date	Depth (ft. bgs)	Acenaphthene (mg/kg)	Anthracene (mg/kg)	Benzo (a) Anthracene (mg/kg)	Benzo (a) Pyrene (mg/kg)	Benzo (b) Fluoranthene (mg/kg)	Benzo (k) Fluoranthene (mg/kg)	Chrysene (mg/kg)	Dibenzo (a,h) Anthracene (mg/kg)	Fluoranthene (mg/kg)	Fluorene (mg/kg)	Indeno (1,2,3-cd) Pyrene (mg/kg)	Pyrene (mg/kg)	1-Methyl - Naphthalene (mg/kg)	2-Methyl - Naphthalene (mg/kg)
ECMC Table 915-1 Limits (Residential SSL)			360	1800	1.1	0.11	1.1	11	110	0.11	240	240	1.1	180	18	24
ECMC Table 915-1 Limits (Protection of Groundwater SSL)			0.55	5.8	0.011	0.24	0.3	2.9	9	0.096	8.9	0.54	0.98	1.3	0.006	0.019
AST01@0-6"	05/30/2025	0-0.5	<0.00500	<0.00500	<0.00500	<0.00500	<0.00500	<0.00500	<0.00500	<0.00500	<0.00500	<0.00500	<0.00500	<0.00500	<0.00500	<0.00500
PWV01-B@5'	05/30/2025	5	<0.00500	<0.00500	<0.00500	<0.00500	<0.00500	<0.00500	<0.00500	<0.00500	<0.00500	<0.00500	<0.00500	<0.00500	<0.00500	<0.00500
PWV01-E@2'	05/30/2025	2	<0.00500	<0.00500	<0.00500	<0.00500	<0.00500	<0.00500	<0.00500	<0.00500	<0.00500	<0.00500	<0.00500	<0.00500	<0.00500	<0.00500
PWV01-N@2'	05/30/2025	2	<0.00500	<0.00500	<0.00500	<0.00500	<0.00500	<0.00500	<0.00500	<0.00500	<0.00500	<0.00500	<0.00500	<0.00500	<0.00500	<0.00500
PWV01-S@2'	05/30/2025	2	<0.00500	<0.00500	<0.00500	<0.00500	<0.00500	<0.00500	<0.00500	<0.00500	<0.00500	<0.00500	<0.00500	<0.00500	<0.00500	<0.00500
PWV02-B@5'	05/30/2025	5	<0.00500	<0.00500	<0.00500	<0.00500	<0.00500	<0.00500	<0.00500	<0.00500	<0.00500	<0.00500	<0.00500	<0.00500	<0.00500	<0.00500
PWV02-B2@5'	05/30/2025	5	<0.00500	<0.00500	<0.00500	<0.00500	<0.00500	<0.00500	<0.00500	<0.00500	<0.00500	<0.00500	<0.00500	<0.00500	<0.00500	<0.00500
PWV02-N@2'	05/30/2025	2	<0.00500	<0.00500	<0.00500	<0.00500	<0.00500	<0.00500	<0.00500	<0.00500	<0.00500	<0.00500	<0.00500	<0.00500	<0.00500	<0.00500
PWV02-S@2'	05/30/2025	2	<0.00500	<0.00500	<0.00500	<0.00500	<0.00500	<0.00500	<0.00500	<0.00500	<0.00500	<0.00500	<0.00500	<0.00500	<0.00500	<0.00500
PWV02-W2@2'	05/30/2025	2	<0.00500	<0.00500	<0.00500	<0.00500	<0.00500	<0.00500	<0.00500	<0.00500	<0.00500	<0.00500	<0.00500	<0.00500	<0.00500	<0.00500
SEP01-DL@4'	05/30/2025	4	<0.00500	<0.00500	<0.00500	<0.00500	<0.00500	<0.00500	<0.00500	<0.00500	<0.00500	<0.00500	<0.00500	<0.00500	<0.00500	<0.00500

Notes:

1. **Bold** values exceed the ECMC Table 915-1 limit(s).
2. Red & blue highlighted soil analytical values indicate an exceedance of the referenced soil screening level (SSL).
3. * Indicates laboratory minimum detection limit in excess of SSL.

ECMC = Energy and Carbon Management Commission

(<) = Analytical result is less than the indicated laboratory reporting limit.

mg/kg = Milligrams per kilogram

ft. = Feet

bgs = Below ground surface

NA = Not analyzed

Source material characterization sample, excavated and transported off site for disposal.

Material excavated and transported off site for disposal.

TABLE 4
SUMMARY OF SOIL SUITABILITY FOR RECLAMATION
PDC ENERGY, INC. - 69175
CECIL-66N64W 12NWNW TANK BATTERY, WELD COUNTY, COLORADO
REM # 39385



Sample ID	Sample Date	Depth (ft. bgs)	pH (Standard Units)	EC (mmhos/cm)	SAR (Standard Units)	Boron (mg/L)
ECMC Table 915-1 Soil Suitability Limits			6 - 8.3	<4	<6	2
AST01@0-6"	05/30/2025	0-0.5	8.02	0.789	0.311	<2.00
PWV01-B@5'	05/30/2025	5	8.46	0.525	0.326	<2.00
PWV01-E@2'	05/30/2025	2	8.49	0.314	0.0319	<2.00
PWV01-N@2'	05/30/2025	2	8.42	0.302	0.0262	<2.00
PWV01-S@2'	05/30/2025	2	8.42	0.267	0.0474	<2.00
PWV02-B@5'	05/30/2025	5	8.08	1.92	1.09	<2.00
PWV02-B2@5'	05/30/2025	5	8.28	0.440	0.0514	<2.00
PWV02-N@2'	05/30/2025	2	8.39	0.303	0.0201	<2.00
PWV02-S@2'	05/30/2025	2	8.22	0.315	0.0171	<2.00
PWV02-W2@2'	05/30/2025	2	8.25	0.327	0.0192	<2.00
SEP01-DL@4'	05/30/2025	4	9.13	0.873	2.21	<2.00
BKG01@1' ⁽⁴⁾	04/22/2025	1	8.45	0.538	0.731	<2.00
BKG01@3' ⁽⁴⁾	04/22/2025	3	8.61	0.462	2.34	<2.00
BKG02@1' ⁽⁴⁾	04/22/2025	1	8.52	0.604	0.785	<2.00
BKG02@3' ⁽⁴⁾	04/22/2025	3	8.20	1.37	4.68	<2.00
BKG01@1-2'	05/30/2025	1-2	7.97	1.15	1.01	<2.00
BKG01@2-3'	05/30/2025	2-3	7.96	1.88	1.28	<2.00
BKG01@4-5'	05/30/2025	4-5	8.08	5.94	12.1	<2.00
BKG02@1-2'	05/30/2025	1-2	8.32	0.554	0.229	<2.00
BKG02@2-3'	05/30/2025	2-3	8.10	1.57	2.27	<2.00
BKG02@4-5'	05/30/2025	4-5	8.21	8.33	12.1	<2.00
Maximum Background Concentration			8.61	-	-	-

Notes:

- Bold** faced values exceed the ECMC Table 915-1 limit(s), but are within background concentrations.
- Bold** faced values exceed the ECMC Table 915-1 limit(s) and native background concentrations.
- Brown highlighted soil analytical values indicate a regulatory exceedance.
- Sample was collected during the decommissioning of the associated CECIL 21-12 Flowline (REM # 39377).

ECMC = Energy and Carbon Management Commission

(<) = Analytical result is less than the indicated laboratory reporting limit.

mg/L = Milligrams per liter

ft. = Feet

bgs = Below ground surface

NA = Not analyzed

EC = Electrical conductivity

SAR = Sodium adsorption ratio

mmhos/cm = Millimhos per centimeter

Source material characterization sample, excavated and transported off site for disposal.

Material excavated and transported off site for disposal.



TABLE 5
SUMMARY OF METALS IN SOIL CHEMISTRY DATA
PDC ENERGY, INC. - 69175
CECIL-66N64W 12NWNW TANK BATTERY, WELD COUNTY, COLORADO
REM # 39385

Sample ID	Sample Date	Depth (ft. bgs)	Arsenic (mg/kg)	Barium (mg/kg)	Cadmium (mg/kg)	Chromium (VI) ⁶ (mg/kg)	Copper (mg/kg)	Lead (mg/kg)	Nickel (mg/kg)	Selenium (mg/kg)	Silver (mg/kg)	Zinc (mg/kg)
ECMC Table 915-1 Limits (Residential SSL)			0.68	15000	71	0.3	3100	400	1500	390	390	23000
ECMC Table 915-1 Limits (Protection of Groundwater SSL)			0.29	82	0.38	0.00067	46	14	26	0.26	0.8	370
AST01@0-6"	05/30/2025	0-0.5	1.52	50.7	<0.200	<0.30	6.36	6.05	5.02	<0.260	0.0246	12.3
PWV01-B@5'	05/30/2025	5	1.66	78.4	<0.200	<0.30	4.83	8.68	4.50	<0.260	0.0266	9.83
PWV01-E@2'	05/30/2025	2	1.77	62.6	<0.200	<0.30	4.48	5.08	4.62	<0.260	0.0272	9.89
PWV01-N@2'	05/30/2025	2	1.77	64.3	<0.200	<0.30	4.53	5.47	4.60	<0.260	0.0230	9.62
PWV01-S@2'	05/30/2025	2	2.29	80.3	<0.200	<0.30	4.22	5.93	4.41	<0.260	0.0247	9.61
PWV02-B@5'	05/30/2025	5	1.88	46.0	<0.200	<0.30	2.44	4.40	2.80	<0.260	0.0277	8.68
PWV02-B2@5'	05/30/2025	5	1.93	68.2	<0.200	<0.30	9.25	8.48	8.42	<0.260	0.0586	13.9
PWV02-N@2'	05/30/2025	2	1.62	65.3	<0.200	<0.30	5.61	5.52	5.49	0.264	0.0270	11.4
PWV02-S@2'	05/30/2025	2	1.48	58.4	<0.200	<0.30	5.97	5.89	5.28	<0.260	0.0337	11.6
PWV02-W2@2'	05/30/2025	2	0.937	49.5	<0.200	<0.30	5.41	5.37	4.27	<0.260	0.0220	9.49
SEP01-DL@4'	05/30/2025	4	1.12	43.3	<0.200	<0.30	4.01	4.71	3.19	<0.260	<0.0200	7.67
BKG01@1' ⁽⁷⁾	04/22/2025	1	2.52	40.5	<0.200	<0.30	8.87	4.71	2.01	<0.260	0.0206	14.7
BKG01@3' ⁽⁷⁾	04/22/2025	3	3.68	58.6	<0.200	<0.30	3.81	5.49	2.74	<0.260	0.0225	14.7
BKG02@1' ⁽⁷⁾	04/22/2025	1	2.94	41.8	<0.200	<0.30	14.6	4.84	2.39	<0.260	<0.0200	18.3
BKG02@3' ⁽⁷⁾	04/22/2025	3	4.56	102	<0.200	<0.30	4.93	6.95	3.54	<0.260	0.0379	17.7
BKG01@1-2'	05/30/2025	1-2	1.65	70.3	<0.200	<0.30	5.51	6.61	5.12	<0.260	0.0287	10.7
BKG01@2-3'	05/30/2025	2-3	2.22	63.5	<0.200	<0.30	3.55	4.82	3.84	<0.260	0.0292	8.60
BKG01@4-5'	05/30/2025	4-5	1.64	66.2	<0.200	<0.30	2.70	4.32	2.71	<0.260	0.0284	8.82
BKG02@1-2'	05/30/2025	1-2	1.37	58.3	<0.200	<0.30	4.55	5.51	4.48	<0.260	0.0282	9.99
BKG02@2-3'	05/30/2025	2-3	1.70	62.9	<0.200	<0.30	4.66	5.46	4.90	<0.260	0.0313	9.39
BKG02@4-5'	05/30/2025	4-5	1.27	69.4	<0.200	<0.30	3.74	4.32	4.31	<0.260	0.0266	7.50
1.25x Maximum Background Concentration			5.70	-	-	-	-	-	-	0.325	-	-

Notes:

- 1.** Bold faced values exceed the ECMC Table 915-1 limit(s), but are within 1.25x background concentrations.
- 2.** Bold faced values exceed the ECMC Table 915-1 limit(s) and native background concentrations.
- 3.** Red & blue highlighted soil analytical values indicate an exceedance of the referenced soil screening level (SSL).
- 4.** Reporting limit used for 1.25 multiplier when all background results for a specific metal are non-detect.
- 5.** * Indicates laboratory minimum detection limit in excess of SSL.
- 6.** Compound falls within the ECMC Table 915-1 footnote 9.
- 7.** Sample was collected during the decommissioning of the associated CECIL 21-12 Flowline (REM # 39377).

ECMC = Energy & Carbon Management Commission

(<) = Analytical result is less than the indicated laboratory reporting limit.

mg/kg = Milligrams per kilogram

ft. = Feet

bgs = Below ground surface

NA = Not analyzed

Source material characterization sample, excavated and transported off site for disposal.

Material excavated and transported off site for disposal.



CLIENT: PDC Energy, Inc. or PDC Permian		SITE NAME: CECIL-66N64W 12NWNW					DATE: 5/30/2025	REM. PROJECT #: 39385	WEATHER: 60s Cloudy	
SITE DIRECTIONS: CR 59&70. 0.9 M N. E into site.							JOB#: 10517			
LEGALS AND LAT/LONG: 40.504882, -104.506243							TASMAN PERSONNEL: C Lovell, W Runge			
SOIL TYPES: Well Graded Sand - SW							SURFACE GRADIENT: West			
SOIL SAMPLING							FACILITY INFRASTRUCTURE			
Date/Time	Soil Sample ID	PID (ppm)	Visual	Olfactory	Photo?	Grab or Lab Sample?	EQUIPMENT		Quantity	
							Above Ground Storage Tank (AST)		1	
05-30-2025 08:59	FLARE01@0-6"	0.0	No Staining	No Odor	Yes	Grab	Buried or Partially Buried Vessel		2	
05-30-2025 09:01	FLARE02@0-6"	0.0	No Staining	No Odor	Yes	Grab	Separator		1	
05-30-2025 09:04	MH01@0-6"	0.0	No Staining	No Odor	Yes	Grab	Emission Control Device (ECD)		2	
05-30-2025 09:29	AST01@0-6"	1.4	No Staining	No Odor	Yes	Lab	Dump Line			
05-30-2025 09:51	PWV01-N@2'	1.0	No Staining	No Odor	Yes	Lab	Wellhead			
05-30-2025 09:52	PWV02-N@2'	1.3	No Staining	No Odor	Yes	Lab	Flowline			
05-30-2025 09:54	PWV01-E@2'	0.8	No Staining	No Odor	Yes	Lab	Other: Meter House		1	
05-30-2025 09:57	PWV02-W@2'	8.7	HC Staining	HC Odor	Yes	Grab	Soil Loads Removed			
05-30-2025 10:02	PWV01-S@2'	1.9	No Staining	No Odor	Yes	Lab	IMPACTED SOIL IDENTIFIED? Yes			
05-30-2025 10:03	PWV02-S@2'	1.0	No Staining	No Odor	Yes	Lab	ESTIMATED VOLUME OF IMPACTS: 9 cubic yards			
05-30-2025 10:05	PWV02-B@5'	0.4	No Staining	No Odor	Yes	Lab	Date	Number	CY	
05-30-2025 10:07	PWV01-B@5'	1.0	No Staining	No Odor	Yes	Lab	5/30/2025	1	9	
05-30-2025 11:36	PWV02-B2@5'	1.1	No Staining	No Odor	Yes	Lab				
05-30-2025 11:37	PWV02-W2@2'	0.7	No Staining	No Odor	Yes	Lab				
05-30-2025 12:08	SEP01-DL@4'	0.8	No Staining	No Odor	Yes	Lab				
05-30-2025 13:10	BKG01@1-2'	0.0	No Staining	No Odor	Yes	Lab	Total Removed		1 9	
05-30-2025 13:11	BKG01@2-3'	0.0	No Staining	No Odor	Yes	Lab	Disposal Facility: WM - Ault			
05-30-2025 13:14	BKG01@4-5	0.0	No Staining	No Odor	Yes	Lab	Groundwater Recovery			
05-30-2025 13:15	BKG02@1-2'	0.0	No Staining	No Odor	Yes	Lab	DATE GW ENCOUNTERED:		DEPTH:	
05-30-2025 13:17	BKG02@2-3'	0.0	No Staining	No Odor	Yes	Lab	GROUNDWATER IN CONTACT WITH IMPACTED SOIL?			
05-30-2025 13:19	BKG02@4-5'	0.0	No Staining	No Odor	Yes	Lab				
							LNAPL OR SHEEN OBSERVED ON GW?			
GROUNDWATER SAMPLING							Date	BBLs		
Date/Time	Groundwater Sample ID	Depth Collected	Turbid?	Sheen?	Odor?	Photo?				
							Total Removed		0	
							Disposal Facility:			

Chevron Rockies Business Unit

Field Qualitative Criteria for ECMC Reporting Associated with the Discovery of Potentially Impacted Material

If answered **Yes** to any of the questions listed below, this may suggest the presence of potentially impacted materials as outlined in ECMC Rule 912. Out of an abundance of caution, a “Yes” response will be reported to the ECMC within 24 hours after discovery, regardless of laboratory results. **Immediately notify the RBU Remediation Team.** Include a copy of this Field Qualitative Spill Criteria Checklist in the field Report.

Please answer the following questions when on-site:

1. Is there visible petroleum hydrocarbon staining in the soil? Yes_____
2. Does the soil sample from the stained area have a petroleum odor? Yes_____
3. Is there a petroleum hydrocarbon sheen on the nearby surface water? No_____
4. Does there appear to be a sheen of the surface of accumulated groundwater or seeps within the excavation indicative of petroleum? No_____
5. Is stained soil in contact with groundwater? No_____

Please Include relevant photos of the site conditions for items 1-5.

Location name: CECIL-66N64W 12NWNW

Please Circle Facility Type: Production Facility

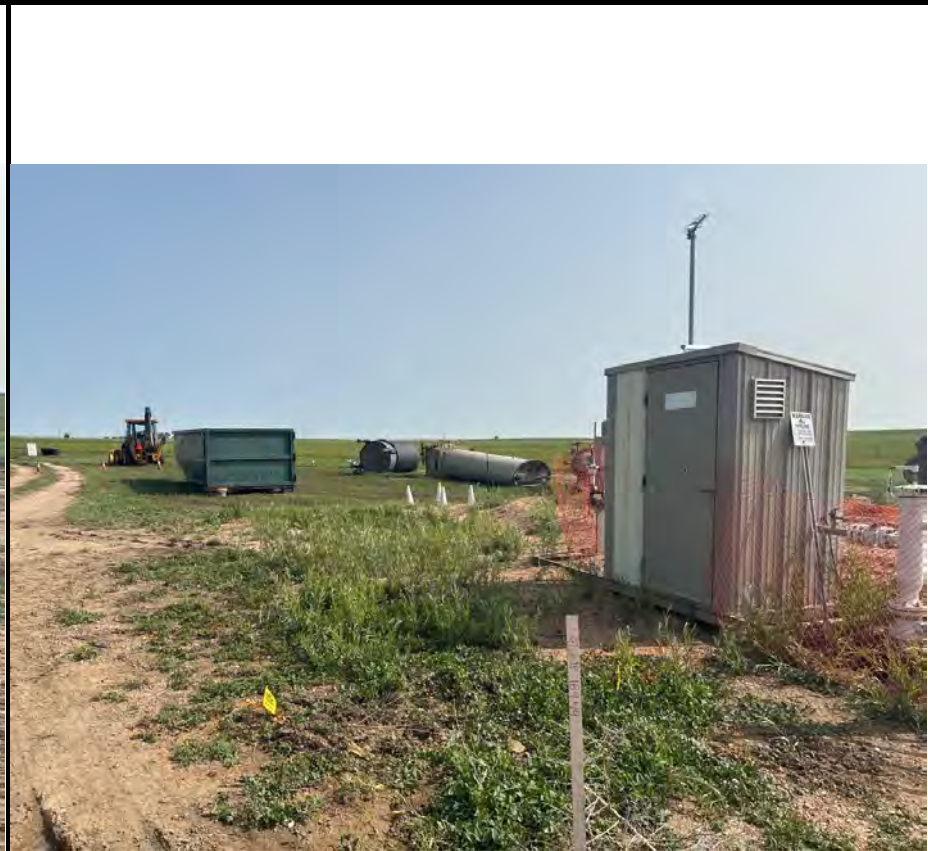


Equipment ID:		Equipment Type:	
Material:	Volume:	Contents:	
Notes/Conditions:			

Equipment ID: FLARE02@0-6"		Equipment Type:	
Material:	Volume:	Contents:	
Notes/Conditions:			



Equipment ID: MH01@0-6"		Equipment Type:		Equipment ID: AST01@0-6"		Equipment Type:	
Material:	Volume:	Contents:		Material:	Volume:	Contents:	
Notes/Conditions:				Notes/Conditions:			



Equipment ID:	Equipment Type:
Material:	Volume:
Contents:	

Notes/Conditions: Missing infrastructure SE of MH01

Equipment ID:	Equipment Type:
Material:	Volume:
Contents:	

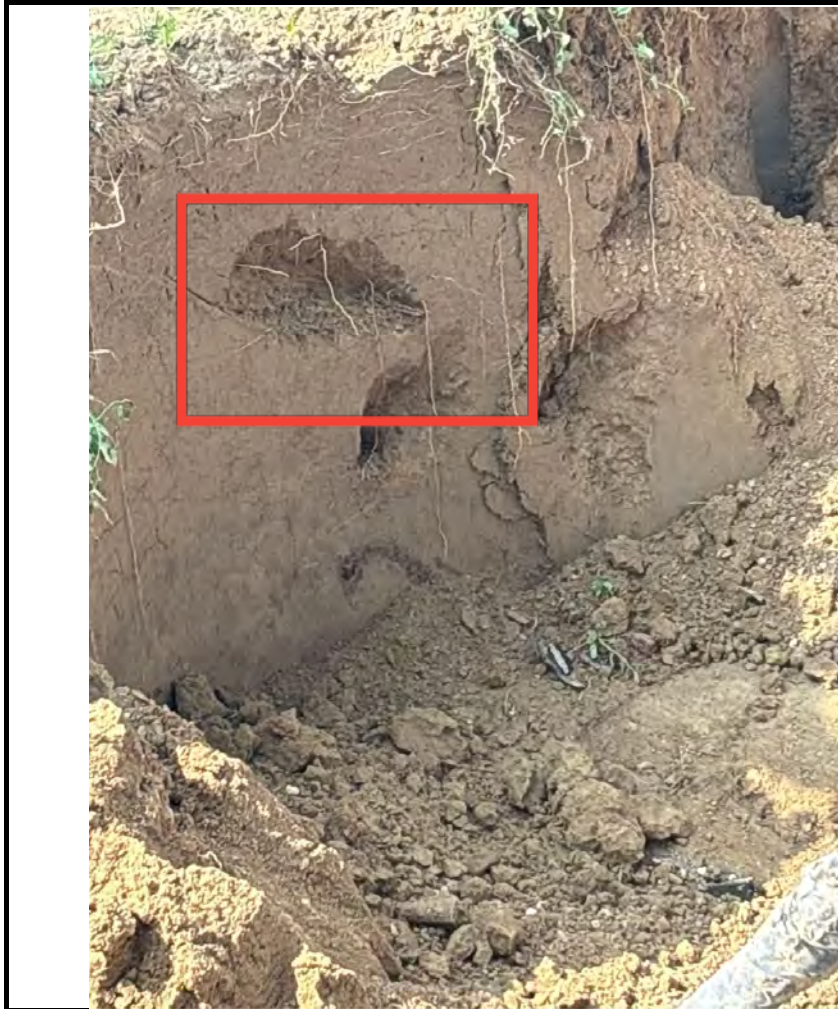
Notes/Conditions: Missing infrastructure N of MH01



Equipment ID: PWV01-N@2'		Equipment Type:		Equipment ID: PWV02-N@2'		Equipment Type:	
Material:	Volume:	Contents:		Material:	Volume:	Contents:	
Notes/Conditions:				Notes/Conditions:			



Equipment ID: PWV01-E@2'		Equipment Type:		Equipment ID: PWV02-W@2@2'		Equipment Type:	
Material:	Volume:	Contents:		Material:	Volume:	Contents:	
Notes/Conditions:				Notes/Conditions:			



Equipment ID: PWV01-S@2'		Equipment Type:		Equipment ID: PWV02-S@2'		Equipment Type:	
Material:	Volume:	Contents:		Material:	Volume:	Contents:	
Notes/Conditions:				Notes/Conditions:			



Equipment ID: PWV02-B@5'		Equipment Type:		Equipment ID: PWV01-B@5'		Equipment Type:	
Material:	Volume:	Contents:		Material:	Volume:	Contents:	
Notes/Conditions:				Notes/Conditions:			



Equipment ID: PWV02-B2@5'		Equipment Type:		Equipment ID: PWV02-W2@2'		Equipment Type:	
Material:	Volume:	Contents:		Material:	Volume:	Contents:	
Notes/Conditions:				Notes/Conditions:			



Equipment ID: SEP01-DL@4'		Equipment Type:		Equipment ID: BKG01		Equipment Type:	
Material:	Volume:	Contents:		Material:	Volume:	Contents:	
Notes/Conditions:				Notes/Conditions:			



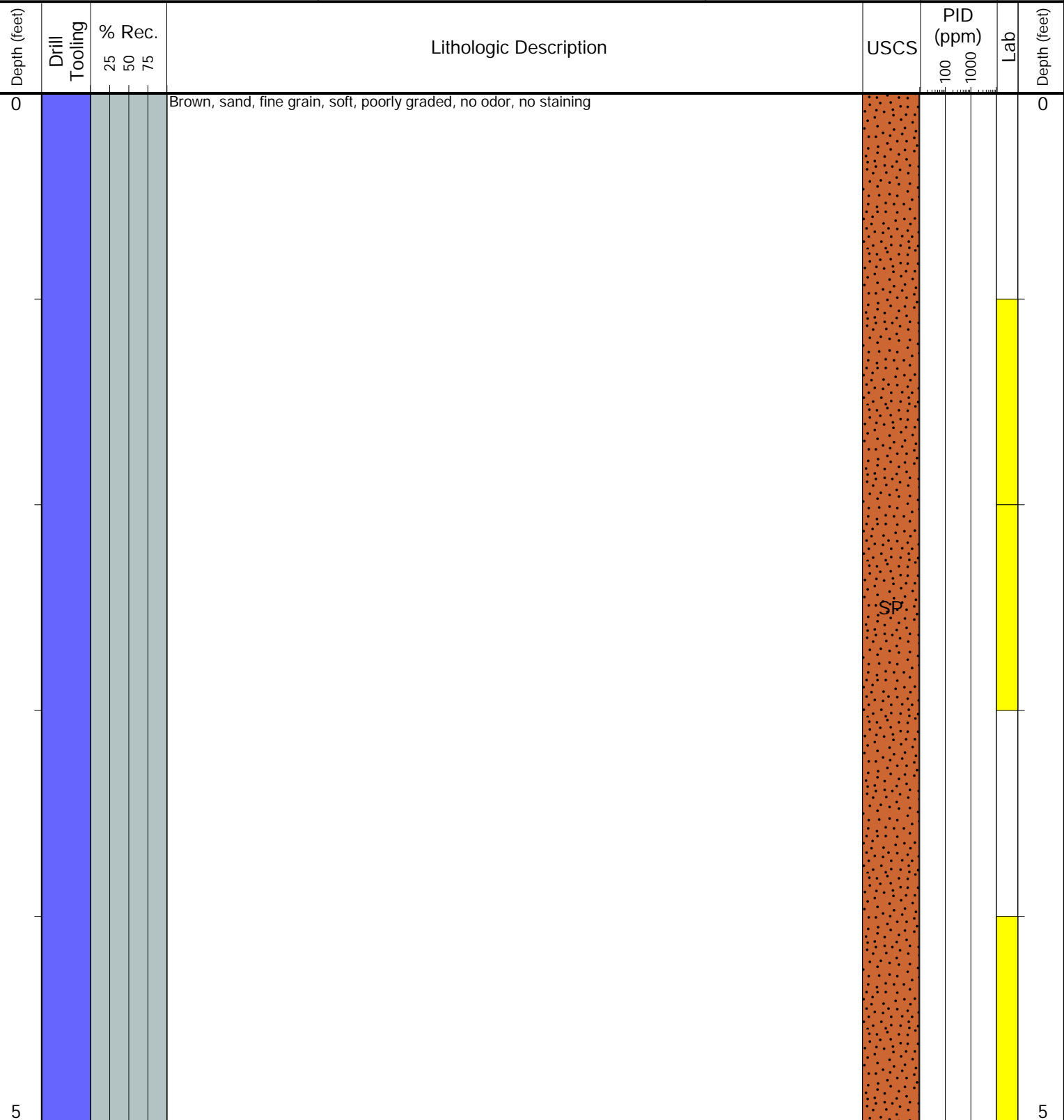
Equipment ID: BKG02		Equipment Type:		Equipment ID:		Equipment Type:	
Material:	Volume:	Contents:		Material:	Volume:	Contents:	
Notes/Conditions:				Notes/Conditions:			



CLIENT: PDC
LOGGED BY: Conor Lovell
PROJECT MANAGER: Allan Engelhardt
DRILLING CONTRACTOR: KSI
DRILLING EQUIPMENT: Hand Auger
DRILL BIT SIZE (INCHES): 3.25
DATE STARTED - COMPLETED: 05/30/25-05/30/25
TOTAL WELL DEPTH (FT. BGS): 5
DEPTH TO WATER (FT. BGS): Not Encountered ▼

Cecil-66N64W 12NWNW
BORING ID: BKG01
LOCATION: E of TB
LATITUDE (NAD 83): 40.504931
LONGITUDE (NAD 83): -104.505982
GROUND ELEVATION (FT. AMSL): Not Measured
ABANDONMENT METHOD: Native Material

4725 Independence St.
Wheat Ridge, CO 80033



Drilling / Sample Method:

- Macro-Core
- Hand Auger
- Expendable Well Tip
- HydroPunch Groundwater Sampler

Laboratory Sample Types:

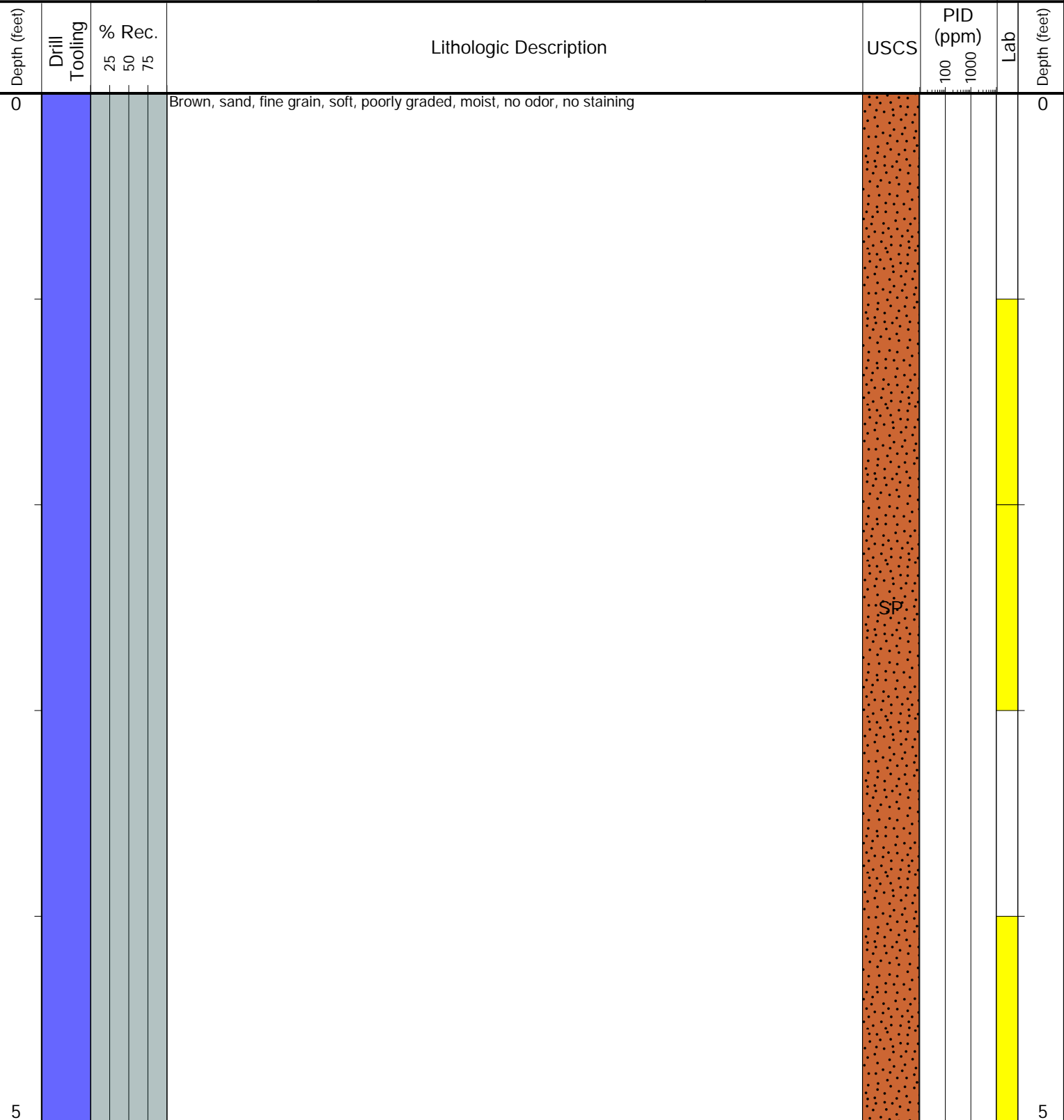
- Geotechnical Lab
- Analytical Chemistry Lab
- Geotechnical & Analytical Chemistry Lab



CLIENT: PDC
LOGGED BY: Conor Lovell
PROJECT MANAGER: Allan Engelhardt
DRILLING CONTRACTOR: KSI
DRILLING EQUIPMENT: Hand Auger
DRILL BIT SIZE (INCHES): 3.25
DATE STARTED - COMPLETED: 05/30/25-05/30/25
TOTAL WELL DEPTH (FT. BGS): 5
DEPTH TO WATER (FT. BGS): Not Encountered ▼

Cecil-66N64W 12NWNW
BORING ID: BKG02
LOCATION: E of TB
LATITUDE (NAD 83): 40.504838
LONGITUDE (NAD 83): -104.505894
GROUND ELEVATION (FT. AMSL): Not Measured
ABANDONMENT METHOD: Native Material

4725 Independence St.
Wheat Ridge, CO 80033



Drilling / Sample Method:

- Macro-Core
- Hand Auger
- Expendable Well Tip
- HydroPunch Groundwater Sampler

Laboratory Sample Types:

- Geotechnical Lab
- Analytical Chemistry Lab
- Geotechnical & Analytical Chemistry Lab