



**RADIAL BOND TOOL
GAMMA RAY
COLLAR LOG**

Company CHEVRON
Well NOFFSINGER 2SD
Field WATTENBERG
County WELD State COLORADO

Location: API # : 05-123-31907
N/E/N/E
LATITUDE: 40.432310 LONGITUDE: -104.624660
SEC 2 TWP 5N RGE 65W
Permanent Datum GL Elevation 4647'
Log Measured From KB
Drilling Measured From KB
Other Services
Elevation
K.B. 4657'
D.F. 4656'
G.L. 4647'

Date	MAT 30, 2025
Run Number	1
Depth Driller	7305'
Depth Logger	2010'
Bottom Logged Interval	2006'
Top Log Interval	SURFACE
Open Hole Size	7+7/8
Type Fluid	WATER
Density / Viscosity	---
Max. Recorded Temp.	NOT RECORDED
Estimated Cement Top	---
Time Well Ready	ROA
Time Logger on Bottom	---
Equipment Number	3814
Location	PLATTEVILLE
Recorded By	R. MARTINEZ
Witnessed By	S. ARREDONDO

Borehole Record		Tubing Record					
Run Number	Bit	From	To	Size	Weight	From	To

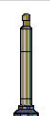
Casing Record	Size	Wgt/Ft	Top	Bottom
Surface String	8+5/8	24	SURFACE	698'
Prot. String				
Production String	4+1/2	11.6	SURFACE	TOTAL DEPTH
Liner				

<<< Fold Here >>>

All interpretations are opinions based on inferences from electrical or other measurements and we cannot and do not guarantee the accuracy or correctness of any interpretation, and we shall not, except in the case of gross or willful negligence on our part, be liable or responsible for any loss, costs, damages, or expenses incurred or sustained by anyone resulting from any interpretation made by any of our officers, agents or employees. These interpretations are also subject to our general terms and conditions set out in our current Price Schedule.

Comments

LOG CORRELATED TO 10' KB

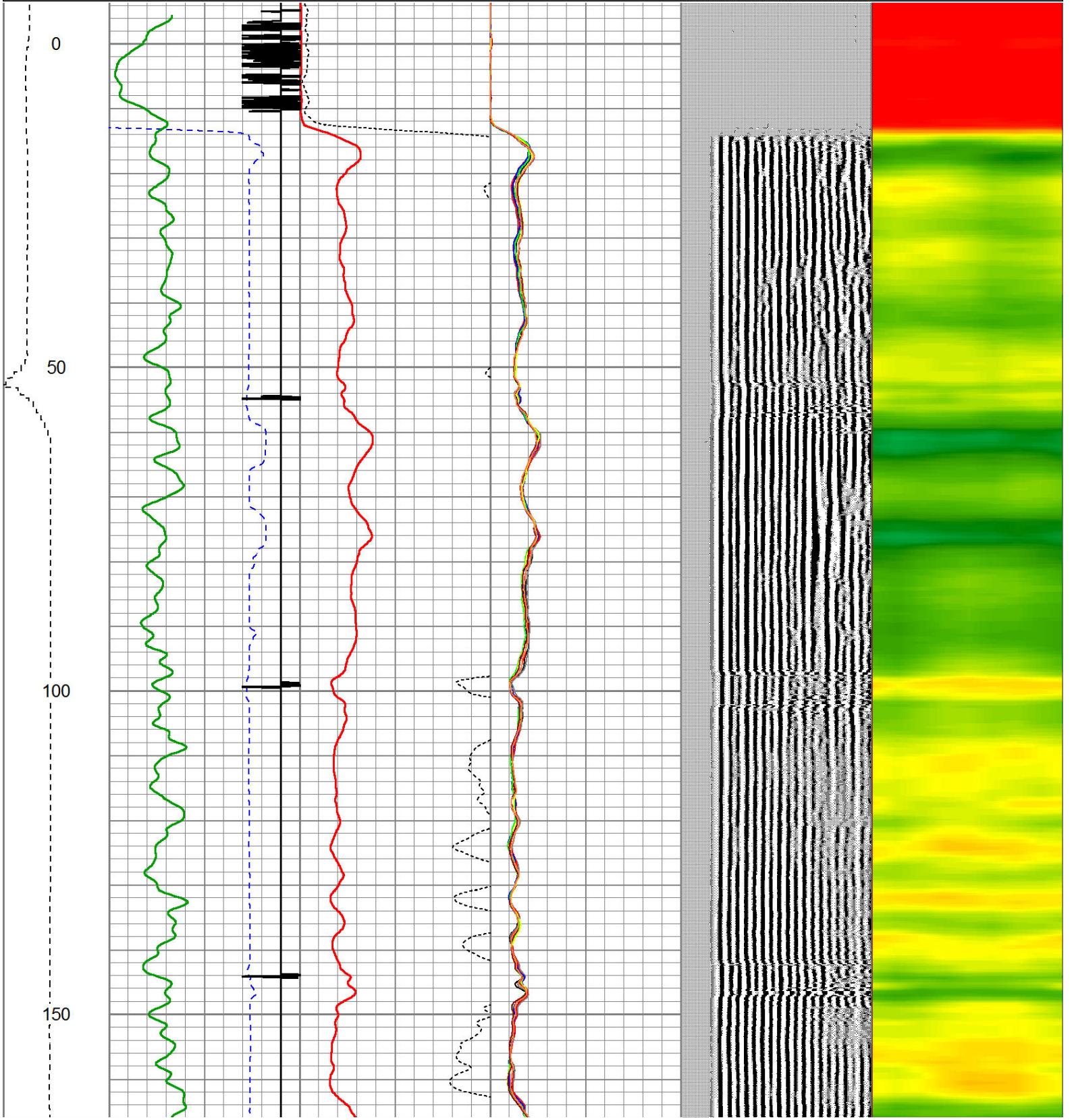
Sensor	Offset (ft)	Schematic	Description	Len (ft)	OD (in)	Wt (lb)
			CHD1_4	1.00	1.44	1.00

			CENT-Probe (PTS_MONO)	2.88	2.75	35.00
HEADVOLT	16.13					
IntTemp	14.72					
			RBT-Probe (Base) Probe Radii Bond Tool with Digital Telemetry	9.39	2.75	90.00
WVF3FT	11.47					
WVFCAL	11.47					
WVFS1	11.47					
WVFS2	11.47					
WVFS3	11.47					
WVFS4	11.47					
WVFS5	11.47					
WVFS6	11.47					
WVFS7	11.47					
WVFS8	11.47					
WVF5FT	10.47					
			CENT-Probe (PT_MONO2)	2.88	2.75	35.00
CCL	3.64					
			GR-Probe (275) Probe 2.75"	4.33	2.75	30.00
GR	0.90					

Dataset: cbl noffsinger 2sd.db: field/well/run1/pass4
 Total Length: 20.49 ft
 Total Weight: 191.00 lb
 O.D. 2.75 in

Database File: cbl noffsinger 2sd.db
 Dataset Pathname: pass4
 Presentation Format: ips_rbt

LSPD	650	TT (usec)	150	0	AMP (mV)	100	0	AMPS1	150	200	VDL	1200	1	Cement Map	8
(ft/min)	-9	CCL	1	0	AMPx5 (mV)	20	0	AMPS2	150						
0	250	0	GR (GAPI)	200				AMPS3	150						
		200	GR (GAPI)	400				AMPS4	150						
								AMPS5	150						
								AMPS6	150						
								AMPS7	150						
								AMPS8	150						

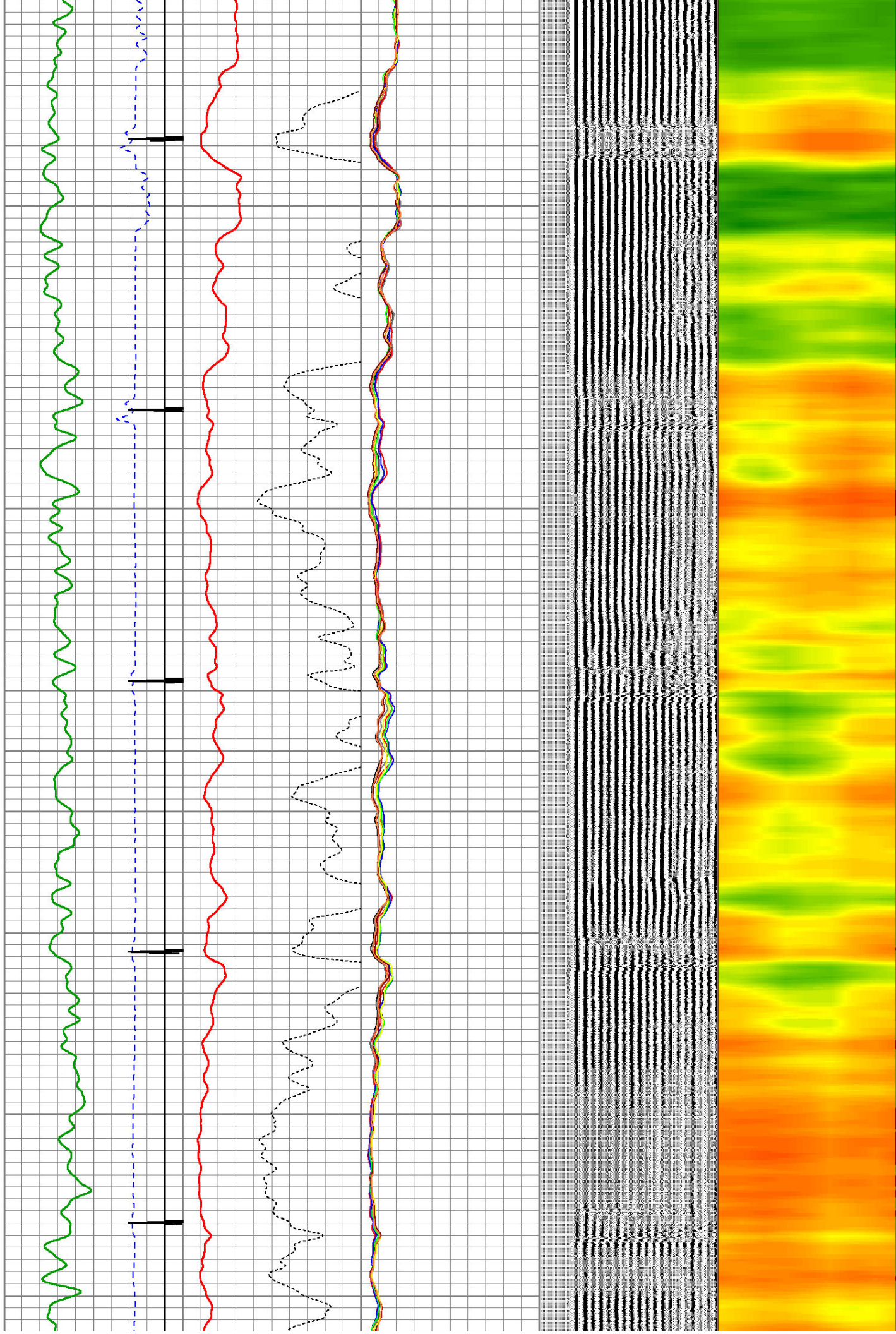


200

250

300

350



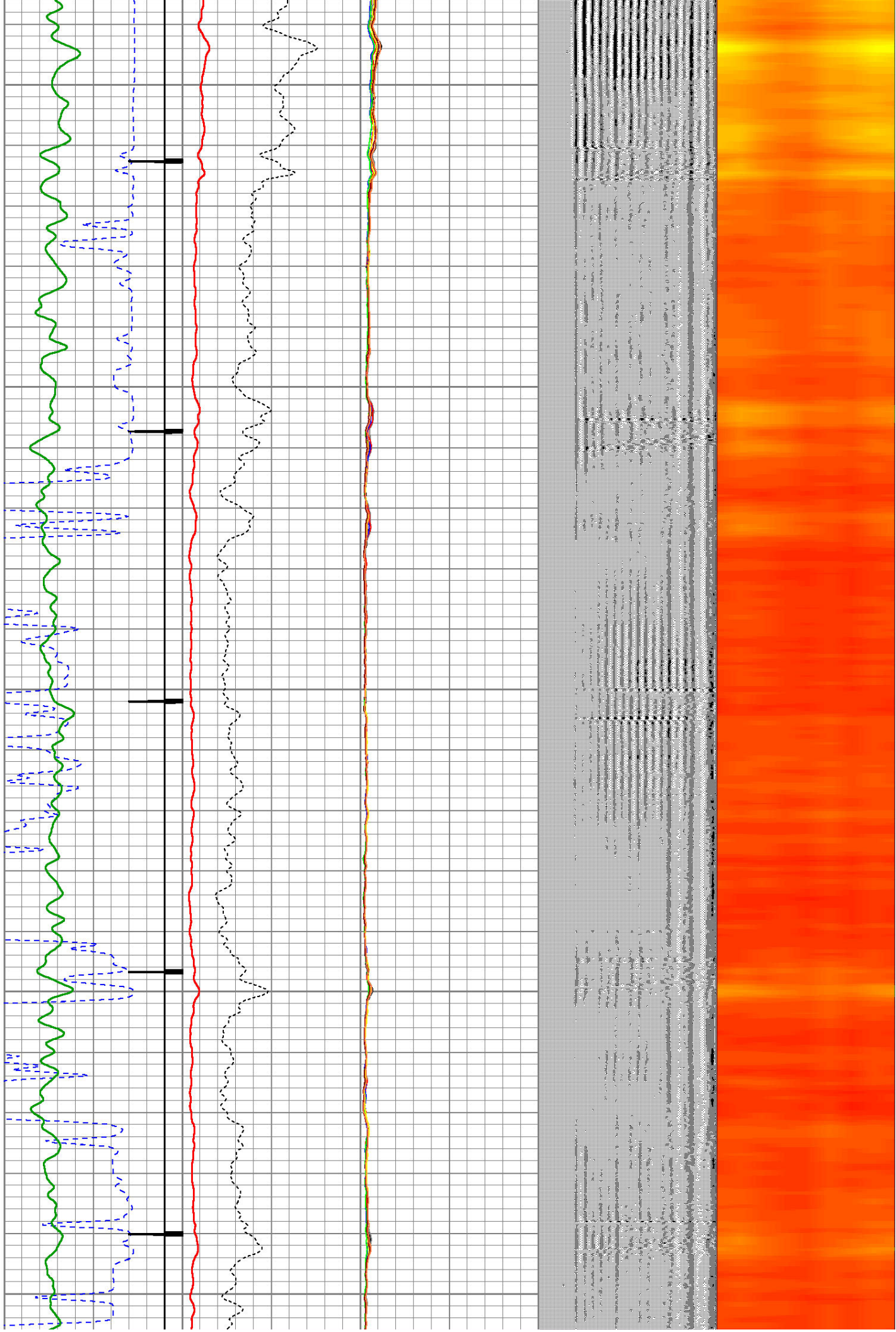
400

450

500

550

600

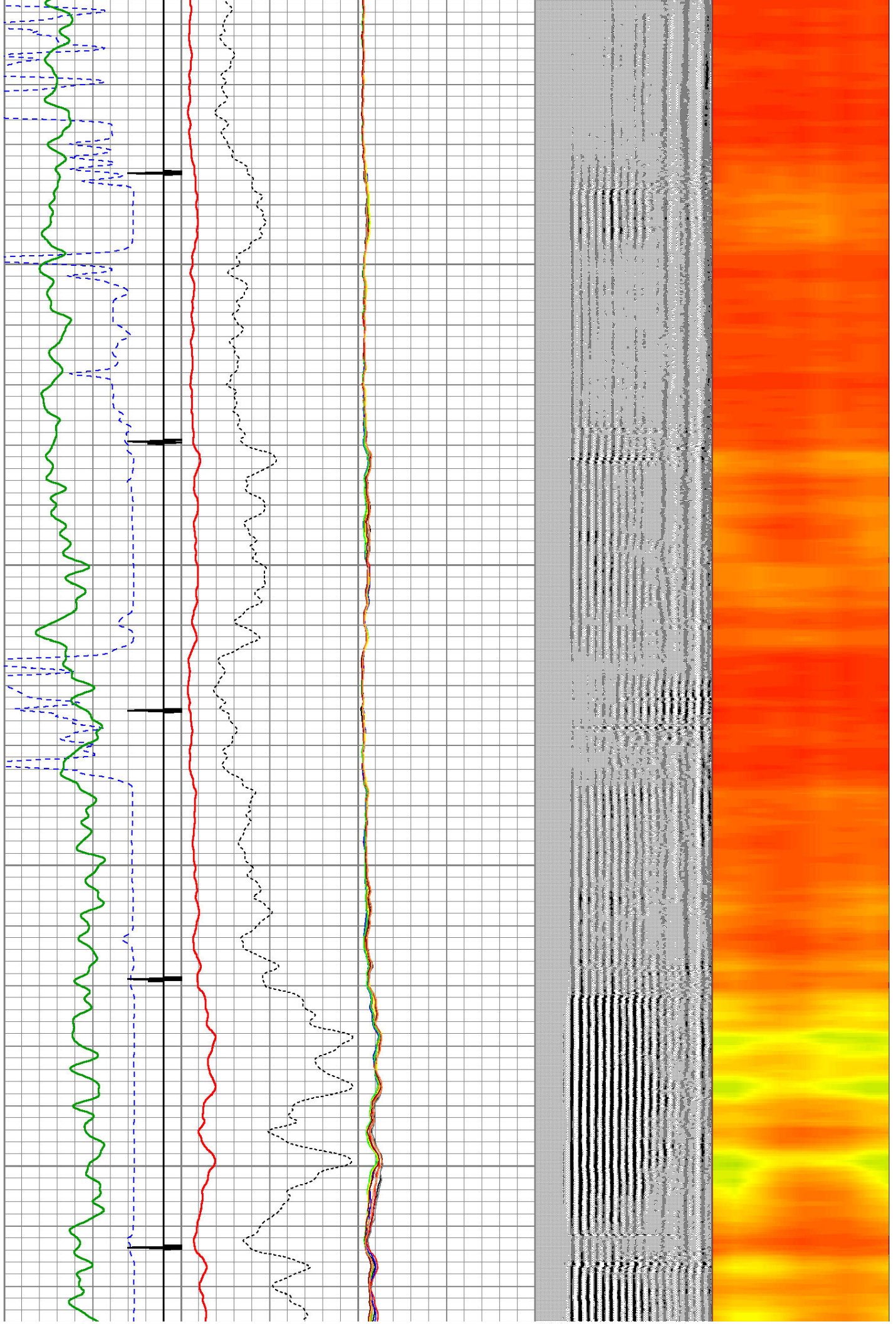


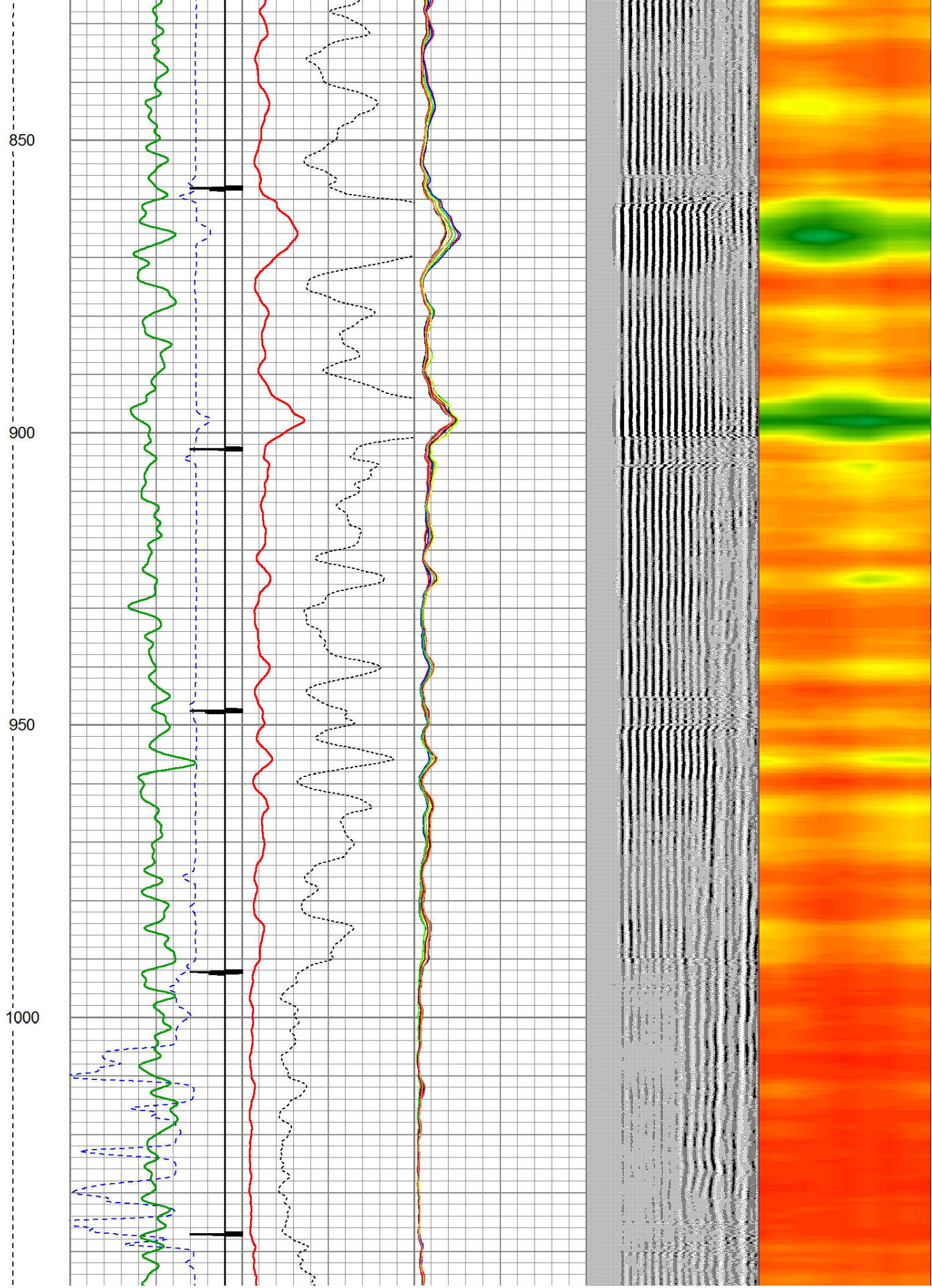
650

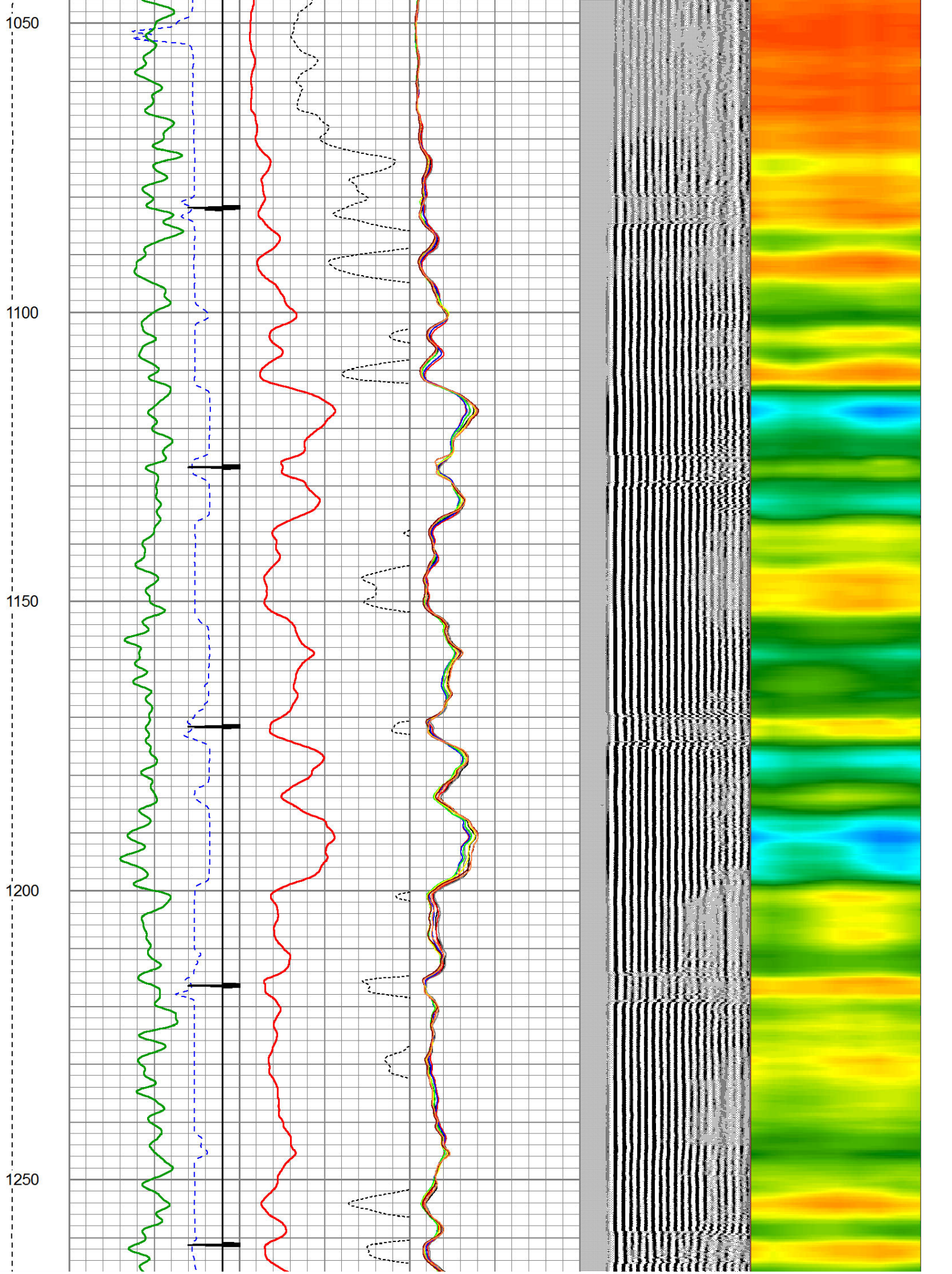
700

750

800





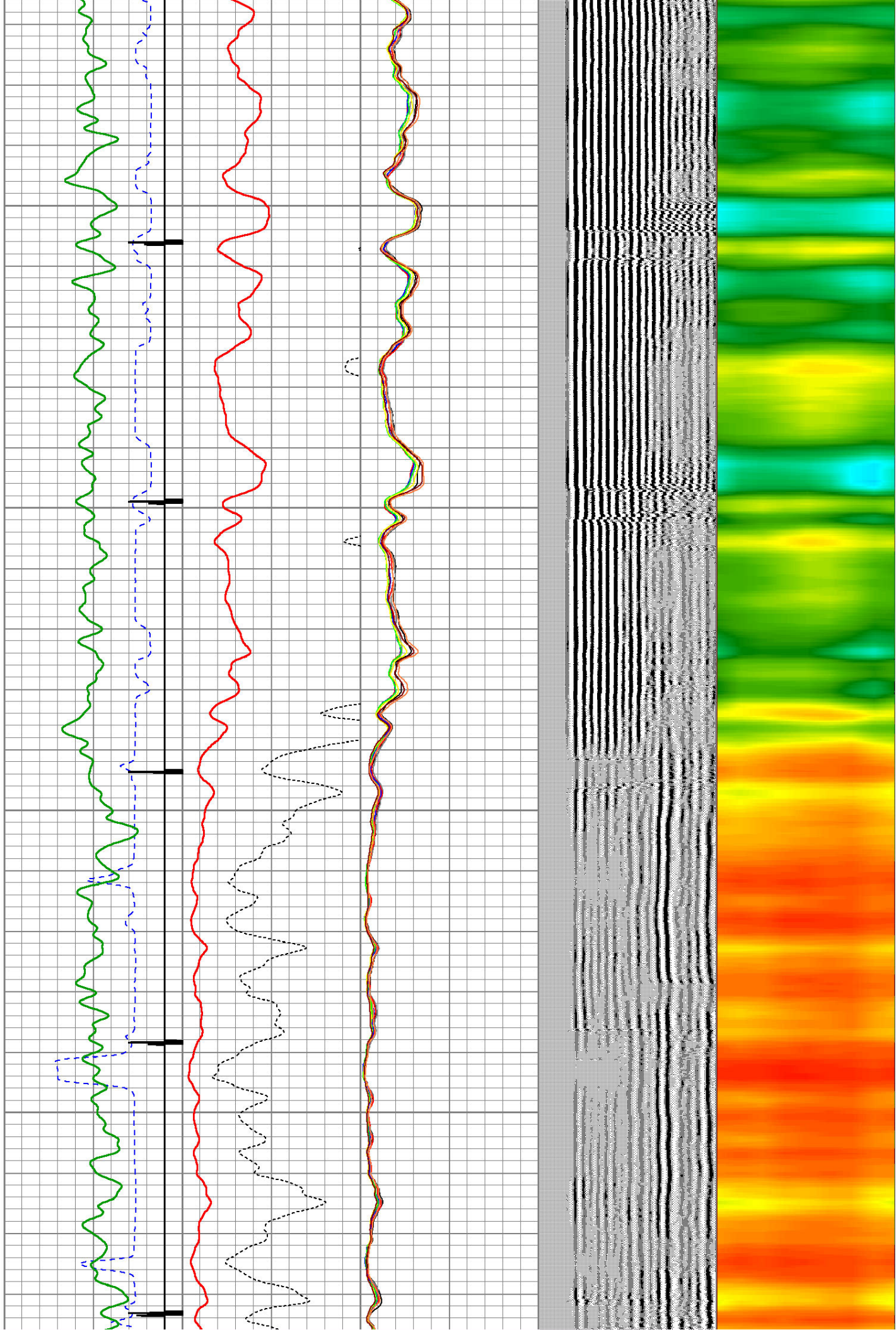


1300

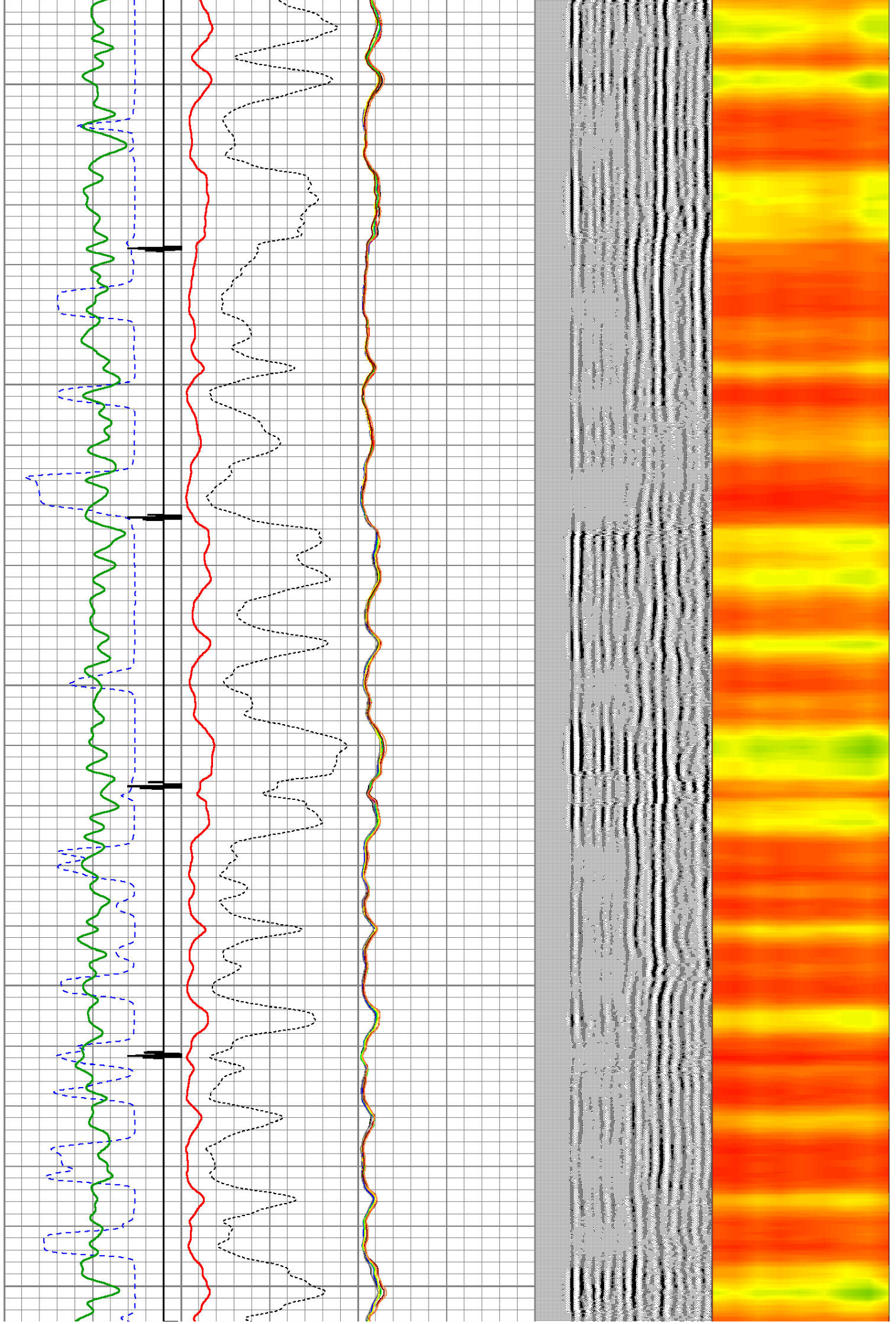
1350

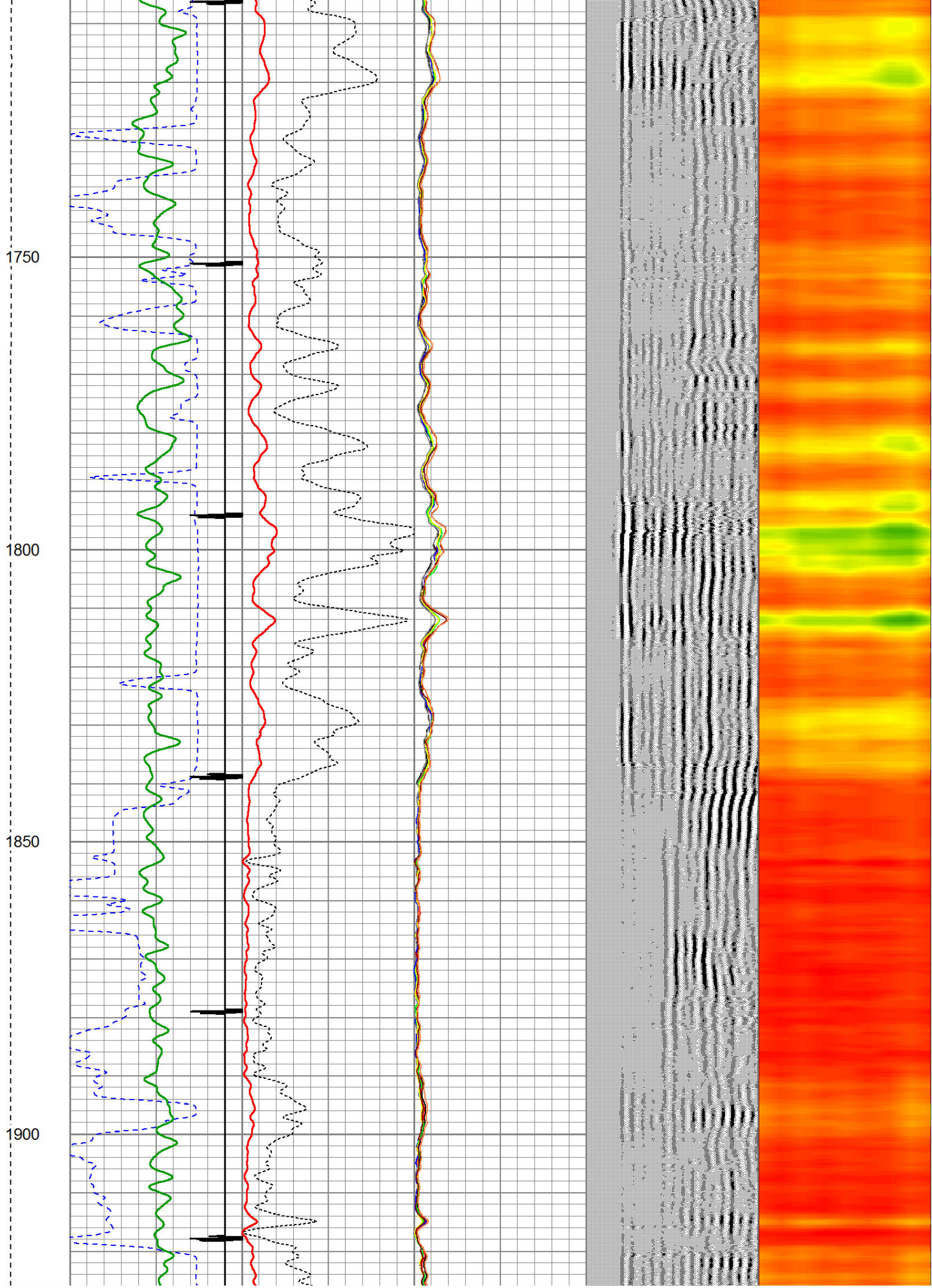
1400

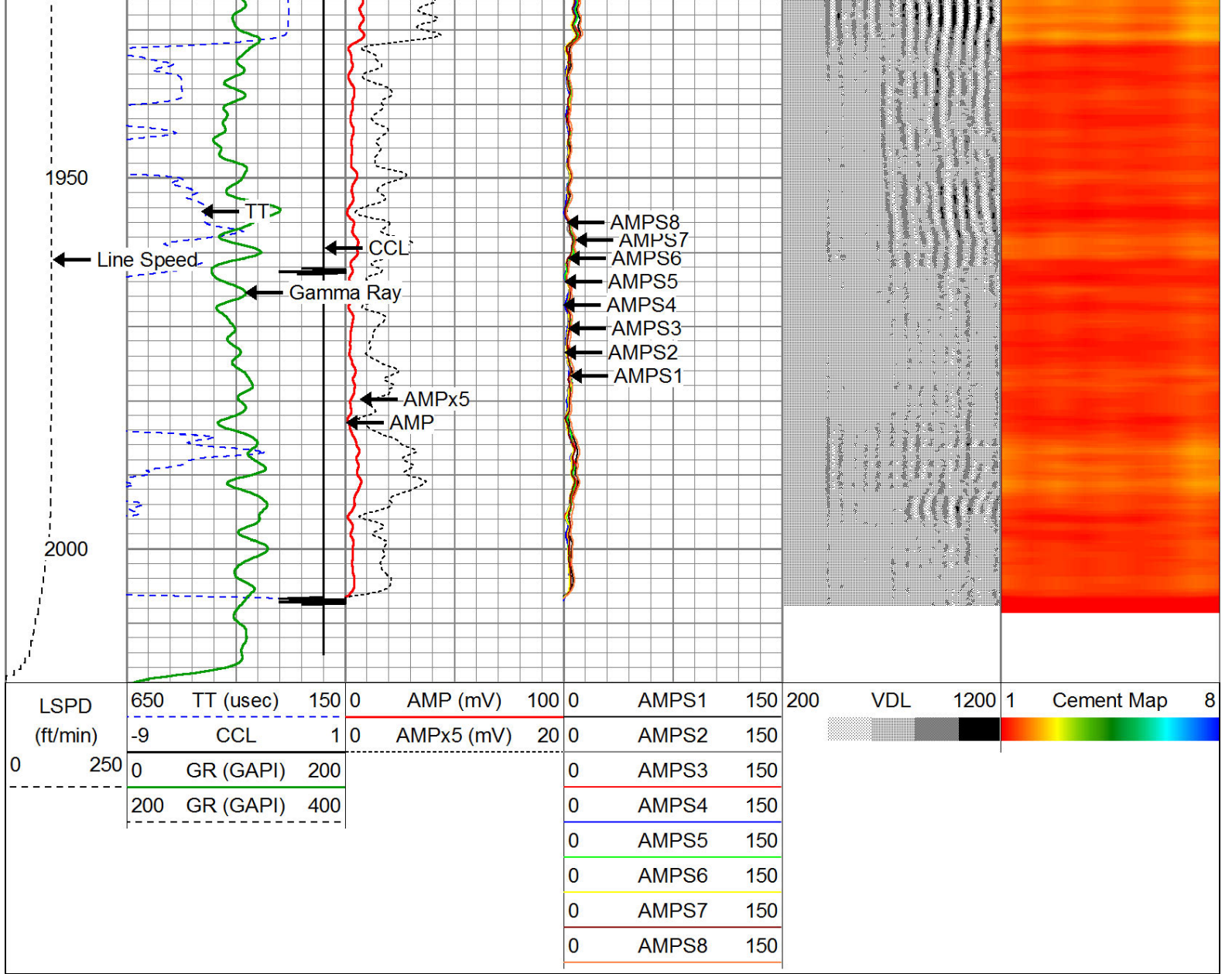
1450



1500
1550
1600
1650
1700







Calibration Report

Database File: cbl noffsinger 2sd.db
 Dataset Pathname: pass4
 Dataset Creation: Thu Sep 29 00:52:10 2011 by Log SCH 111116

Gamma Ray Calibration Report

Serial Number: 275
 Tool Model: Probe
 Performed: Wed Nov 06 11:09:15 2013

Calibrator Value: 100.0 GAPI

Background Reading: 35.0 cps
 Calibrator Reading: 160.0 cps

Sensitivity: 0.9000 GAPI/cps

Segmented Cement Bond Log Calibration Report

Serial Number: Base
 Tool Model: Probe

Calibration Casing Diameter: 4.500 in
 Calibration Depth: -6.260 ft

Master Calibration, performed Thu Sep 29 00:31:59 2011:

	Raw (v)		Calibrated (mv)		Results	
	Zero	Cal	Zero	Cal	Gain	Offset
3'	0.043	0.999	0.800	81.196	84.071	-2.794
CAL	1.035	1.065				
5'	0.044	0.709	0.800	81.196	120.843	-4.522
SUM						
S1	0.070	0.969	0.500	81.196	89.759	-5.757
S2	0.039	0.946	0.500	81.196	88.947	-2.970
S3	0.036	0.975	0.500	81.196	85.868	-2.554
S4	0.023	1.013	0.500	81.196	81.512	-1.373
S5	0.052	1.070	0.500	81.196	79.227	-3.597
S6	0.042	1.095	0.500	81.196	76.633	-2.707
S7	0.039	1.039	0.500	81.196	80.692	-2.648
S8	0.038	0.957	0.500	81.196	87.798	-2.808

Internal Reference Calibration, performed Tue Jun 05 07:53:42 2012:

	Raw (v)		Calibrated (v)		Results	
	Zero	Cal	Zero	Cal	Gain	Offset
CAL	0.000	0.000	1.035	1.065	1.000	0.000

Air Zero Calibration, performed Thu Sep 29 00:32:25 2011:

	Raw (v)		Calibrated (v)		Results	
	Zero		Zero		Offset	
3'	0.042		0.000		0.000	
5'	0.044		0.000		0.000	
SUM						
S1	0.070		0.000		-0.001	
S2	0.040		0.000		-0.001	
S3	0.035		0.000		0.001	
S4	0.024		0.000		-0.001	
S5	0.053		0.000		-0.001	
S6	0.042		0.000		-0.000	
S7	0.040		0.000		-0.001	
S8	0.038		0.000		-0.000	



Company CHEVRON
 Well NOFFSINGER 2SD
 Field WATTENBERG
 County WELD
 State COLORADO