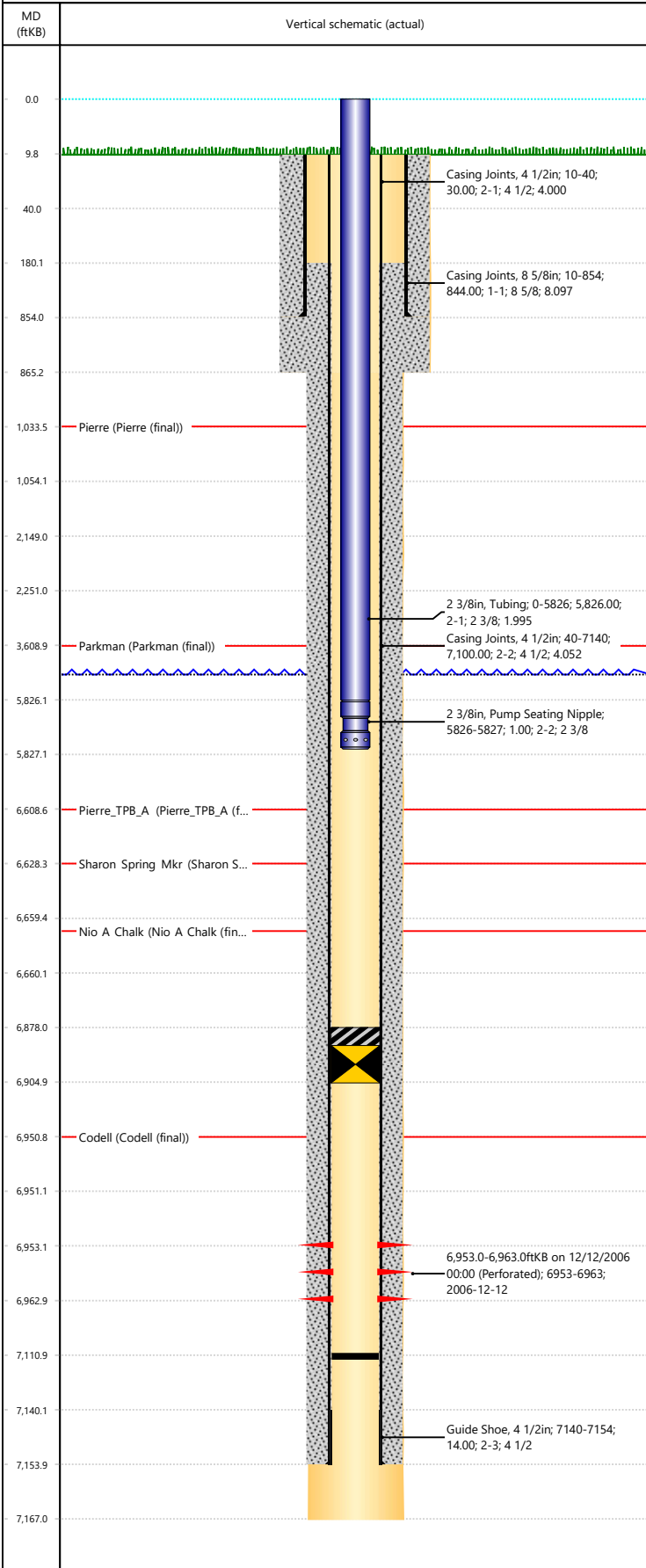




P&A Wellbore For State

Well Name: **Pettinger 34-2**

Original Hole [Land]



Well Header

Surface UWI 0512323591	Business Unit Rockies	Gov Auth Dist Evans	Prod Tree Loc Land
Orig. KB to Gnd (ft) 10.00	Original Spud Date 11/25/2006	Abandon Date	Well Sub-Status PR
Comment			

Surface Location (Congressional)

Qtr 3 SW	Qtr 4 SE	Section 2	Townshp 6	Townsh... N	Range 64	Rng E/... W	Latitude (°) 40.50944	Longitude (°) -104.515499
--------------------	--------------------	---------------------	---------------------	-----------------------	--------------------	-----------------------	---------------------------------	-------------------------------------

Wellbore Sections

Section Des	Hole Size (in)	Top Depth (ftKB)	Btm Depth (ftKB)
Surface	12 1/4	10.0	865.0
Production	7 7/8	865.0	7,167.0

Casing Strings

Csg Des	Run Date	OD (in)	Wt/Len (lb/ft)	Grade	Top Depth (MD) (ftKB)	Set Depth (MD) (ftKB)
Surface	11/24/2006	8 5/8	24.00	J-55	10	854
Production	11/28/2006	4 1/2	10.50	M-65	10	7154

Cement

Des	Start Date	Top (ftKB)	Btm (ftKB)
	11/24/2006	10.0	854.0
	11/28/2006	180.0	7,154.0

Zone Statuses

Zone Name	Status Date	Status	Fluid Type	Job	Prod Method

Perforation Data

Linked Zone	Explosive Type	Entered Shot Total	Top (ftKB)	Btm (ftKB)	Date
Codell, Original Hole		30	6,953.0	6,963.0	12/12/2006

Stim/Frac Stage

Zone	Start Date	Top (ftKB)	Btm (ftKB)
Codell, Original Hole	12/14/2006		

Other In Hole

Run Date	Des	Make	OD (in)	Top (ftKB)	Btm (ftKB)
8/8/2025	Cast Iron Bridge Plug w/ 2 SX Cement		4	6,878.0	6,905.0

Logs

Date	Type	Depth Top (MD) (ftKB)	Btm (ftKB)

Wellbore Plug Back Total Depths

Date	Type	Com	PBTD (ftKB)
12/12/2006			7,111