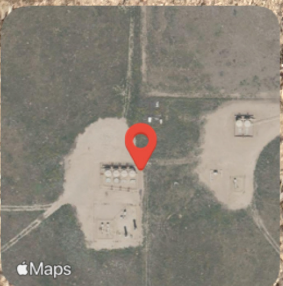


E&P waste (a segment of pipe) is visible on location.



La Salle, CO, United States

Lat 40.230403, Long -104.616835

08/25/2025 01:18 PM GMT-06:00

ECMC : Environmental Inspection



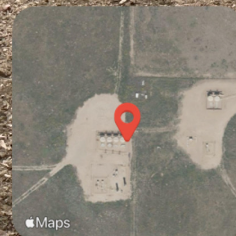
66°F

5° N

6.17 mph

2.14 m

Looking at the former facility. The tank battery has been decommissioned. Weeds are visible on the pad. The pad material (gravel) remains on location; the pad has not been returned to a level grade.



La Salle, CO, United States

Lat 40.230376, Long -104.616854

08/25/2025 01:19 PM GMT-06:00

ECMC : Environmental Inspection



66°F

120° SE

6.17 mph

2.18 m

Pieces of trash and/or E&P waste (plugs, valves, cement, wires, zip ties) are visible across the location.



La Salle, CO, United States

Lat 40.230134, Long -104.616905
08/25/2025 01:19 PM GMT-06:00
ECMC : Environmental Inspection



66°F

216° SW

6.17 mph

2.57 m

Maps



La Salle, CO, United States

Lat 40.230067, Long -104.616902

08/25/2025 01:20 PM GMT-06:00

ECMC : Environmental Inspection

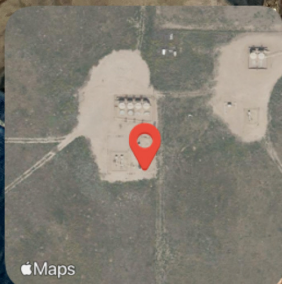


66°F

44° NE

6.17 mph

2.99 m



Apple Maps



La Salle, CO, United States

Lat 40.230069, Long -104.616921
08/25/2025 01:20 PM GMT-06:00
ECMC : Environmental Inspection



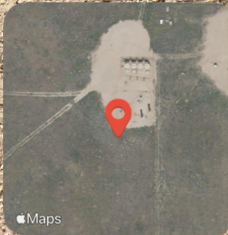
66°F





6.17 mph


3.27 m

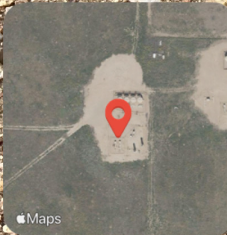
264° W



 **La Salle, CO, United States**
Lat 40.229955, Long -104.617124
08/25/2025 01:20 PM GMT-06:00
ECMC : Environmental Inspection

 66°F
 6.17 mph
 2.98 m
 176° S





La Salle, CO, United States

Lat 40.230160, Long -104.617067

08/25/2025 01:21 PM GMT-06:00

ECMC : Environmental Inspection



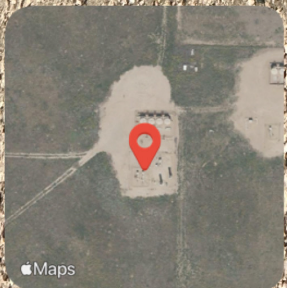
66°F

278° W

6.17 mph

3.31 m

Maps



La Salle, CO, United States

Lat 40.230144, Long -104.617042

08/25/2025 01:21 PM GMT-06:00

ECMC : Environmental Inspection



66°F

19° N

6.17 mph

3.18 m

Maps