

FREMONT ENVIRONMENTAL INC.

June 10, 2024

Mr. Daniel Peterson
Noble Energy Inc.
2115 117th Avenue
Greeley, CO 80634

Subject: **Flowline Closure Data Submittal**
UPV 5-5H3
API # 05-123-18860
SWNW Sec. 5, T5N, R63W
Weld County, Colorado
Fremont Project No. C024-072
Facility ID #251057, Remediation #30272

Dear Mr. Peterson:

As you requested, Fremont Environmental Inc. (Fremont) personnel conducted Flowline Closure activities for the Noble Energy Inc. (Noble) UPV 5-5H3. Impacted soil was not encountered during abandonment activities. Details of the UPV 5-5H3 flowline closure activities are documented in the attached Closure Report. Groundwater was not encountered during flowline abandonment activities.

Please contact me at (303) 956-8714 if you require any additional information. Fremont appreciates the opportunity to provide this service.

Sincerely,

FREMONT ENVIRONMENTAL INC.



Paul V. Henehan, P.E.
Senior Consultant

Attachments:

- Facility Closure Checklist
- Tables
- Figures
- Photos
- Laboratory Reports

Flowline Closure Checklist

COGCC Rule 911.a.(4) Environmental Site Closure Assessment Field Form

Additional Attachments:		Tank Battery Closure		Wellhead Closure		Pit Closure		Partially Buried Vault Closure	
Site Name & COGCC Facility Number: UPV T5N-R63W-S5 L01 Facility: 330318		Date: 04/02/2024-04/03/2024				Remediation Project #: 30272			
Associated Wells: UPV 5-5H3 Facility ID: 251057 API: 05-123-18860		Age of Site: 1995				Number of Photos Attached: 12 Photos			

Starting point: (GPS coordinates and descriptions) 40.429766, -104.4677934

End point: (GPS coordinates and descriptions) 40.4339265, -104.4658365

USCS Soil Type: SW Estimated Depth to Groundwater: N/A

Hydrocarbon Impacted Soils / Spills: (Note estimated size and if impact appears to be surficial or extends to an unknown depth)
None observed

Salt Crusted Soils or Impacted Vegetation: (Note estimated size and if impact appears to be surficial or extends to an unknown depth)
None observed

Flowlines

Flowline type	2" Steel							
Depth	Roughly 3-4ft							
Age	1995							
Length	1,620ft							
Construction Material	Yellow Jacket							
Were flowlines pulled?	Yes							
Visual Integrity of lines	No Damage							
Visual impacts if trenched	N/A							
PID Readings if trenched	N/A							
Sample taken? Location/Sample ID#	FL01 @ 5.0' FL08 @ 5.0'							
Photo Number(s)	Photo 1A-1G & 2A-2E							

Other observations regarding on location flowlines:

Summary

Was impacted soil identified?		No	Yes - less than 10 cubic yards	Yes - more than 10 cubic yards
Total number of samples field screened: 8 Samples		Total number of samples collected: 8 (Initial) & 2 (Resamples)		
Highest PID Reading: High @ 0.0ppm (All Samples)		Total number of samples submitted to lab for analysis: 2 (Initial) 2 (Resamples)		
If more than 10 cubic yards of impacted soil were observed:				
Vertical extent: N/A		Estimated spill volume: N/A		
Lateral extent: N/A		Volume of soil removed: N/A		
Is additional investigation required? N/A				
Was groundwater encountered during the investigation?				
No		Yes - not impacted or in contact with impacted soils		Yes - groundwater impacted and/or in contact with impacted soils
Measured depth to groundwater: N/A		Was remedial groundwater removal conducted? Yes No		
Date Groundwater was encountered: N/A		Commencement date of removal: N/A		
Sheen on groundwater? Yes No		Volume of groundwater removed prior to sampling: N/A		
Free product observed? Yes No		Volume of groundwater removed post sampling: N/A		
Total number of samples collected: N/A		Total Volume of groundwater removed: N/A		
Total number of samples submitted to lab for analysis: N/A				

TABLE 1
FIELD DATA SUMMARY TABLE
NOBLE 100322
UPV 5-5H3, WELD COUNTY, COLORADO
REM # 30272

Sample ID	Sample Date	Depth (ft)	GPS Data Latitude/Longitude		PDOP Value	VOC Concentration (ppm)
FL02@4.0'	4/2/2024	4.0 Ft	40.4300996	-104.4675809	0.9	0.0 ppm
FL06@4.0'	4/2/2024	4.0 Ft	40.4326469	-104.4664278	0.9	0.0 ppm
FL07@4.0'	4/2/2024	4.0 Ft	40.4334447	-104.4660301	1.0	0.0 ppm
FL01@5.0'	4/2/2024	5.0 Ft	40.4297660	-104.4677934	0.9	0.0 ppm
FL01@5.0' (2)	5/7/2025	5.0 Ft	40.4297660	-104.4677934	-	NA
FL03@5.0'	4/2/2024	5.0 Ft	40.4305755	-104.4673764	0.9	0.0 ppm
FL04@5.0'	4/2/2024	5.0 Ft	40.4311086	-104.4671340	0.9	0.0 ppm
FL05@5.0'	4/2/2024	5.0 Ft	40.4318109	-104.4668159	0.9	0.0 ppm
FL08@5.0'	4/2/2024	5.0 Ft	40.4339265	-104.4658365	0.9	0.0 ppm
FL08@5.0' (2)	5/7/2025	5.0 Ft	40.4339265	-104.4658365	-	NA

TABLE 1
FIELD DATA SUMMARY TABLE
NOBLE 100322
UPV 5-5H3, WELD COUNTY, COLORADO
REM # 30272

Sample ID	Sample Date	Depth (ft)	GPS Data Latitude/Longitude		PDOP Value	VOC Concentration (ppm)
BKG01	4/3/2024	0.5 Ft, 4.0 Ft, 5.0 Ft	40.4336567	-104.4654532	0.9	0.0 ppm
BKG02	4/3/2024	0.5 Ft, 4.0 Ft, 5.0 Ft	40.4335656	-104.4651123	0.9	0.0 ppm
BKG03	4/3/2024	0.5 Ft, 4.0 Ft, 5.0 Ft	40.4333219	-104.4651765	0.8	0.0 ppm
BKG04	4/3/2024	0.5 Ft, 4.0 Ft, 5.0 Ft	40.4299721	-104.4682883	0.7	0.0 ppm
BKG05	4/3/2024	0.5 Ft, 4.0 Ft, 5.0 Ft	40.4293760	-104.4675218	0.7	0.0 ppm
BKG06	5/7/2025	0.5 Ft, 4.0 Ft, 5.0 Ft	40.4296984	-104.4674865	-	0.0 ppm
BKG07	5/7/2025	0.5 Ft, 4.0 Ft, 5.0 Ft	40.4299182	-104.4675290	-	0.0 ppm
BKG08	5/7/2025	0.5 Ft, 4.0 Ft, 5.0 Ft	40.4295748	-104.4677688	-	0.0 ppm
BKG09	5/7/2025	0.5 Ft, 4.0 Ft, 5.0 Ft	40.4299434	-104.4681902	-	0.0 ppm
BKG10	5/7/2025	0.5 Ft, 4.0 Ft, 5.0 Ft	40.4295805	-104.4681677	-	0.0 ppm

1. Global Positioning System (GPS) data is provided in decimal degrees using North American Datum (NAD) 83 UTMZone 13 North.

2. Volatile organic compound (VOC) concentrations are measured in the field using a photoionization detector (PID).

PDOP = Position Dilution of Precision

ppm = Parts per million

in. = Inches

ft. = Feet

bgs = Below ground surface

Confirmation Resample

TABLE 2
SUMMARY OF VOLATILE ORGANIC SOIL CHEMISTRY DATA
NOBLE 100322
UPV 5-5H3, WELD COUNTY, COLORADO
REM # 30272

Sample ID	Sample Date	Depth (ft)	Benzene (mg/kg)	Toluene (mg/kg)	Ethyl-Benzene (mg/kg)	Xylenes (mg/kg)	1,2,4-Trimethyl-Benzene (mg/kg)	1,3,5-Trimethyl-Benzene (mg/kg)	Naphthalene (mg/kg)	TPH (mg/kg)	TPH GRO (mg/kg)	TPH DRO (mg/kg)	TPH ORO (mg/kg)
ECMC Table 915-1 Limits (Residential SSL)			1.2	490	5.8	58	30	27	2	500	500**		
ECMC Table 915-1 Limits (Protection of Groundwater SSL)			0.0026	0.69	0.78	9.9	0.0081	0.0087	0.0038	500	500**		
FL01@5.0'	4/3/2024	5.0 Ft	<0.0020	<0.0050	<0.0050	<0.010	<0.0050	<0.0050	<0.0038	<500	<0.50	<50	<50
FL01@5.0' (2)	5/7/2025	5.0 Ft	<0.00200	<0.0100	<0.0100	<0.100	<0.00500	<0.00500	<0.00300	<500	<0.100	7.54	27.7
FL08@5.0'	4/2/2024	5.0 Ft	<0.0020	<0.0050	<0.0050	<0.010	<0.0050	<0.0050	<0.0038	<500	<0.50	<50	<50
FL08@5.0' (2)	5/7/2025	5.0 Ft	<0.00200	<0.0100	<0.0100	<0.100	<0.00500	<0.00500	<0.00300	<500	<0.100	4.21	8.64

1. Bold values exceed the ECMC Table 915-1 limit(s)
 2. Red & blue highlighted soil analytical values indicate an exceedance of the referenced soil screening level (SSL)
 3. * Indicates laboratory minimum detection limit in excess of SSL
 4. ** Summation of GRO+DRO+ORO must be less than 500 mg/kg
- (<) = Analytical result is less than the indicated laboratory reporting limit.
TPH-GRO = Total petroleum hydrocarbons - gasoline range organics
TPH-DRO = Total petroleum hydrocarbons - diesel range organics
TPH-ORO = Total petroleum hydrocarbons - oil range organics
mg/kg = Milligrams per kilogram
ft. = Feet
bgs = Below ground surface
NA - Not analyzed

Confirmation Resample

TABLE 3
SUMMARY OF POLYCYCLIC AROMATIC HYDROCARBON SOIL CHEMISTRY DATA
NOBLE 100322
UPV 5-5H3, WELD COUNTY, COLORADO
REM # 30272

Sample ID	Sample Date	Depth (ft)	Acenaphthene (mg/kg)	Anthracene (mg/kg)	Benzo (a) Anthracene (mg/kg)	Benzo (a) Pyrene (mg/kg)	Benzo (b) Fluoranthene (mg/kg)	Benzo (k) Fluoranthene (mg/kg)	Chrysene (mg/kg)	Dibenzo (a,h) Anthracene (mg/kg)	Fluoranthene (mg/kg)	Fluorene (mg/kg)	Indeno (1,2,3-cd) Pyrene (mg/kg)	Pyrene (mg/kg)	1-Methyl - Naphthalene (mg/kg)	2-Methyl- Naphthalene (mg/kg)
ECMC Table 915-1 Limits (Residential SSL)			360	1800	1.1	0.11	1.1	11	110	0.11	240	240	1.1	180	18	24
ECMC Table 915-1 Limits (Protection of Groundwater SSL)			0.55	5.8	0.011	0.24	0.3	2.9	9	0.096	8.9	0.54	0.98	1.3	0.006	0.019
FL01@5.0'	4/3/2024	5.0 Ft	<0.00500	<0.00500	<0.00500	<0.00500	<0.00500	<0.00500	<0.00500	<0.00500	<0.00500	<0.00500	<0.00500	<0.00500	<0.00500	<0.00500
FL01@5.0' (2)	5/7/2025	5.0 Ft	<0.0330	<0.0330	<0.00600	<0.0330	<0.0330	<0.0330	<0.0330	<0.0330	<0.00300	<0.0330	<0.0330	<0.0330	<0.00300	<0.0120
FL08@5.0'	4/2/2024	5.0 Ft	<0.00500	<0.00500	<0.00500	<0.00500	<0.00500	<0.00500	<0.00500	<0.00500	<0.00500	<0.00500	<0.00500	<0.00500	<0.00500	<0.00500
FL08@5.0' (2)	5/7/2025	5.0 Ft	<0.0330	<0.0330	<0.00600	<0.0330	<0.0330	<0.0330	<0.0330	<0.0330	<0.00300	<0.0330	<0.0330	<0.0330	<0.00300	<0.0120

1. Bold values exceed the ECMC Table 915-1 limit(s)
 2. Red & blue highlighted soil analytical values indicate an exceedance of the referenced soil screening level (SSL)
 3. * Indicates laboratory minimum detection limit in excess of SSL
 4. ** Summation of GRO+DRO+ORO must be less than 500 mg/kg
- (<) = Analytical result is less than the indicated laboratory reporting limit.
TPH-GRO = Total petroleum hydrocarbons - gasoline range organics
TPH-DRO = Total petroleum hydrocarbons - diesel range organics
TPH-ORO = Total petroleum hydrocarbons - oil range organics
mg/kg = Milligrams per kilogram
ft. = Feet
bgs = Below ground surface
NA - Not analyzed

Confirmation Resample

TABLE 4
SUMMARY OF SOIL SUITABILITY FOR RECLAMATION
NOBLE 100322
UPV 5-5H3, WELD COUNTY, COLORADO
REM # 30272

Sample ID	Sample Date	Depth (ft)	pH (Standard Units)	EC (mmhos/cm)	SAR (Standard Units)	Boron (mg/L)
ECMC Table 915-1 Soil Suitability Limits			6 - 8.3	4	6	2
FL01@5.0'	4/3/2024	5.0 Ft	9.42	0.172	0.514	<2.00
FL01@5.0' (2)	5/7/2025	5.0 Ft	8.28	0.268	0.725	<0.200
FL08@5.0'	4/2/2024	5.0 Ft	8.86	0.101	0.0908	<2.00
FL08@5.0' (2)	5/7/2025	5.0 Ft	8.21	0.121	0.283	<0.200
BKG01@6.0"	4/3/2024	0.5 Ft	6.71	0.160	0.0488	<2.00
BKG02@6.0"	4/3/2024	0.5 Ft	6.63	0.0822	0.0329	<2.00
BKG03@6.0"	4/3/2024	0.5 Ft	7.08	0.0781	0.0212	<2.00
BKG04@6.0"	4/3/2024	0.5 Ft	6.02	0.0400	0.0206	<2.00
BKG05@6.0"	4/3/2024	0.5 Ft	5.89	0.0231	0.0188	<2.00
BKG06 0.5'	5/7/2025	0.5 Ft	6.33	0.122	0.0709	<0.200
BKG07 0.5'	5/7/2025	0.5 Ft	6.64	0.187	0.0691	<0.200
BKG08 0.5'	5/7/2025	0.5 Ft	6.43	0.119	0.0650	<0.200
BKG09 0.5'	5/7/2025	0.5 Ft	6.29	0.110	0.0476	<0.200
BKG10 0.5'	5/7/2025	0.5 Ft	5.77	0.127	0.0579	<0.200
BKG01@4.0'	4/3/2024	4.0 Ft	8.55	0.128	0.0574	<2.00
BKG02@4.0'	4/3/2024	4.0 Ft	8.68	0.232	0.116	<2.00
BKG03@4.0'	4/3/2024	4.0 Ft	8.91	0.128	0.0665	<2.00
BKG04@4.0'	4/3/2024	4.0 Ft	7.41	0.0220	0.0527	<2.00
BKG05@4.0'	4/3/2024	4.0 Ft	7.72	0.0155	0.0197	<2.00
BKG06 4.0'	5/7/2025	4.0 Ft	7.67	0.155	0.163	<0.200
BKG07 4.0'	5/7/2025	4.0 Ft	7.29	0.142	0.215	<0.200
BKG08 4.0'	5/7/2025	4.0 Ft	7.26	0.0851	0.136	<0.200

TABLE 4
SUMMARY OF SOIL SUITABILITY FOR RECLAMATION
NOBLE 100322
UPV 5-5H3, WELD COUNTY, COLORADO
REM # 30272

Sample ID	Sample Date	Depth (ft)	pH (Standard Units)	EC (mmhos/cm)	SAR (Standard Units)	Boron (mg/L)
ECMC Table 915-1 Soil Suitability Limits			6 - 8.3	4	6	2
BKG09 4.0'	5/7/2025	4.0 Ft	7.34	0.116	0.146	<0.200
BKG10 4.0'	5/7/2025	4.0 Ft	7.74	0.106	0.281	<0.200
BKG01@5.0'	4/3/2024	5.0 Ft	8.99	8.54	0.0356	<2.00
BKG02@5.0'	4/3/2024	5.0 Ft	9.06	0.119	0.0577	<2.00
BKG03@5.0'	4/3/2024	5.0 Ft	9.04	0.107	0.0545	<2.00
BKG04@5.0'	4/3/2024	5.0 Ft	6.64	0.0257	0.0763	<2.00
BKG05@5.0'	4/3/2024	5.0 Ft	7.81	0.0171	0.0235	<2.00
BKG06 5.0'	5/7/2025	5.0 Ft	7.63	0.106	0.159	<0.200
BKG07 5.0'	5/7/2025	5.0 Ft	7.95	0.255	0.187	<0.200
BKG08 5.0'	5/7/2025	5.0 Ft	7.44	0.0750	0.135	<0.200
BKG09 5.0'	5/7/2025	5.0 Ft	7.37	0.0876	0.105	<0.200
BKG10 5.0'	5/7/2025	5.0 Ft	7.68	0.0936	0.204	<0.200
Maximum Background Concentration			9.06	8.54	0.281	<2.00

1. **Bold** faced values exceed the ECMC Table 915-1 limit(s), but are within background concentrations.

2. **Bold** faced values exceed the ECMC Table 915-1 limit(s) and native background concentrations.

3. Brown highlighted soil analytical values indicate a regulatory exceedance.

4. Confirmation Resample

NA - Not analyzed/Not applicable

TABLE 5
SUMMARY OF METALS IN SOIL CHEMISTRY DATA
NOBLE 100322
UPV 5-5H3, WELD COUNTY, COLORADO
REM # 30272

Sample ID	Sample Date	Depth (ft)	Arsenic (mg/kg)	Barium (mg/kg)	Cadmium (mg/kg)	Chromium (VI) (mg/kg)	Copper (mg/kg)	Lead (mg/kg)	Nickel (mg/kg)	Selenium (mg/kg)	Silver (mg/kg)	Zinc (mg/kg)
ECMC Table 915-1 Limits (Residential SSL)			0.68	15000	71	0.3	3100	400	1500	390	390	23000
ECMC Table 915-1 Limits (Protection of Groundwater SSL)			0.29	82	0.38	0.00067	46	14	26	0.26	0.8	370
FL01@5.0'	4/3/2024	5.0 Ft	2.16	50.3	<0.200	<0.30*	5.25	3.64	2.20	<0.260	<0.0200	10.1
FL01@5.0' (2)	5/7/2025	5.0 Ft	2.11	50.7	<0.200	<0.300*	<10.0	<10.0	<10.0	0.502	<0.500	<50.0
FL08@5.0'	4/2/2024	5.0 Ft	3.45	58.5	<0.200	<0.30*	1.66	2.67	2.04	<0.260	<0.0200	8.08
FL08@5.0' (2)	5/7/2025	5.0 Ft	5.03	48.9	<0.200	<0.300*	<10.0	<10.0	<10.0	0.427	<0.500	<50.0
BKG01@6.0"	4/3/2024	0.5 Ft	1.65	36.0	<0.200	<0.30*	3.63	4.01	3.03	<0.260	<0.0200	9.95
BKG02@6.0"	4/3/2024	0.5 Ft	1.73	40.8	<0.200	<0.30*	4.19	4.21	3.53	<0.260	<0.0200	10.8
BKG03@6.0"	4/3/2024	0.5 Ft	1.68	31.5	<0.200	<0.30*	3.29	3.45	2.66	<0.260	<0.0200	9.53
BKG04@6.0"	4/3/2024	0.5 Ft	1.66	32.4	<0.200	<0.30*	2.65	3.70	2.30	<0.260	<0.0200	9.05
BKG05@6.0"	4/3/2024	0.5 Ft	1.81	33.3	<0.200	<0.30*	2.95	4.06	2.29	<0.260	<0.0200	9.75
BKG06 0.5'	5/7/2025	0.5 Ft	1.28	29.3	<0.200	<0.300*	<10.0	<10.0	<10.0	0.387	<0.500	<50.0
BKG07 0.5'	5/7/2025	0.5 Ft	1.55	37.3	<0.200	<0.300*	<10.0	<10.0	<10.0	0.319	<0.500	<50.0
BKG08 0.5'	5/7/2025	0.5 Ft	1.51	26.9	<0.200	<0.300*	<10.0	<10.0	<10.0	0.308	<0.500	<50.0
BKG09 0.5'	5/7/2025	0.5 Ft	1.74	33.0	<0.200	<0.300*	<10.0	<10.0	<10.0	0.429	<0.500	<50.0
BKG10 0.5'	5/7/2025	0.5 Ft	2.56	24.6	<0.200	<0.300*	<10.0	<10.0	<10.0	0.292	<0.500	<50.0
BKG01@4.0'	4/3/2024	4.0 Ft	2.05	41.1	<0.180	<0.30*	3.00	3.64	2.93	<0.234	<0.0180	9.35
BKG02@4.0'	4/3/2024	4.0 Ft	2.31	68.1	<0.200	<0.30*	3.06	3.93	3.23	<0.260	<0.0200	9.64
BKG03@4.0'	4/3/2024	4.0 Ft	2.05	85.9	<0.200	<0.30*	2.57	3.39	2.75	<0.260	<0.0200	8.71
BKG04@4.0'	4/3/2024	4.0 Ft	2.21	36.2	<0.200	<0.30*	2.02	3.28	2.11	<0.260	<0.0200	7.98
BKG05@4.0'	4/3/2024	4.0 Ft	1.50	0.237	<0.00197	<0.30*	0.0178	0.0219	0.0151	<0.00256	<0.000197	0.0632
BKG06 4.0'	5/7/2025	4.0 Ft	1.95	77.4	<0.200	<0.300*	<10.0	<10.0	<10.0	0.378	<0.500	<50.0
BKG07 4.0'	5/7/2025	4.0 Ft	2.75	59.9	<0.200	<0.300*	<10.0	<10.0	<10.0	0.425	<0.500	<50.0
BKG08 4.0'	5/7/2025	4.0 Ft	3.88	35.7	<0.200	<0.300*	<10.0	<10.0	<10.0	0.566	<0.500	<50.0
BKG09 4.0'	5/7/2025	4.0 Ft	4.66	39.5	<0.200	<0.300*	<10.0	<10.0	<10.0	0.462	<0.500	<50.0
BKG10 4.0'	5/7/2025	4.0 Ft	2.60	35.1	<0.200	<0.300*	<10.0	<10.0	<10.0	0.346	<0.500	<50.0
BKG01@5.0'	4/3/2024	5.0 Ft	2.49	35.7	<0.200	<0.30*	2.45	2.97	2.52	<0.260	<0.0200	7.56
BKG02@5.0'	4/3/2024	5.0 Ft	1.72	30.8	<0.200	<0.30*	2.59	3.65	3.02	<0.260	<0.0200	8.81
BKG03@5.0'	4/3/2024	5.0 Ft	6.38	82.3	<0.179	<0.30*	4.02	3.80	3.93	<0.232	<0.0179	11.7
BKG04@5.0'	4/3/2024	5.0 Ft	2.00	31.7	<0.200	<0.30*	1.85	2.36	1.88	<0.260	<0.0200	7.27
BKG05@5.0'	4/3/2024	5.0 Ft	1.81	33.3	<0.200	<0.30*	2.95	4.06	2.29	<0.260	<0.0200	9.75

TABLE 5
SUMMARY OF METALS IN SOIL CHEMISTRY DATA
NOBLE 100322
UPV 5-5H3, WELD COUNTY, COLORADO
REM # 30272

Sample ID	Sample Date	Depth (ft)	Arsenic (mg/kg)	Barium (mg/kg)	Cadmium (mg/kg)	Chromium (VI) (mg/kg)	Copper (mg/kg)	Lead (mg/kg)	Nickel (mg/kg)	Selenium (mg/kg)	Silver (mg/kg)	Zinc (mg/kg)
ECMC Table 915-1 Limits (Residential SSL)			0.68	15000	71	0.3	3100	400	1500	390	390	23000
ECMC Table 915-1 Limits (Protection of Groundwater SSL)			0.29	82	0.38	0.00067	46	14	26	0.26	0.8	370
BKG06 5.0'	5/7/2025	5.0 Ft	1.44	27.0	<0.200	<0.300*	<10.0	<10.0	<10.0	0.379	<0.500	<50.0
BKG07 5.0'	5/7/2025	5.0 Ft	1.96	48.6	<0.200	<0.300*	<10.0	<10.0	<10.0	0.447	<0.500	<50.0
BKG08 5.0'	5/7/2025	5.0 Ft	3.04	27.9	<0.200	<0.300*	<10.0	<10.0	<10.0	0.338	<0.500	<50.0
BKG09 5.0'	5/7/2025	5.0 Ft	1.95	37.0	<0.200	<0.300*	<10.0	<10.0	<10.0	0.380	<0.500	<50.0
BKG10 5.0'	5/7/2025	5.0 Ft	1.63	32.5	<0.200	<0.300*	<10.0	<10.0	<10.0	0.318	<0.500	<50.0
1.25x Maximum Background Concentration			5.82	107	<0.200	<0.30	5.24	5.26	4.41	0.708	<0.500	13.5

- Bold** faced values exceed the ECMC Table 915-1 limit(s), but are within 1.25x background concentrations.
- Bold** faced values exceed the ECMC Table 915-1 limit(s) and native background concentrations.
- Red & blue highlighted soil analytical values indicate an exceedance of the referenced soil screening level (SSL).
- Non-detect background results accounted for in the highest background concentration by using the reporting limit.

ECMC = Energy & Carbon Management Commission

(<) = Analytical result is less than the indicated laboratory reporting limit.

mg/kg = Milligrams per kilogram

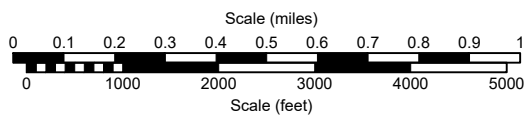
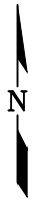
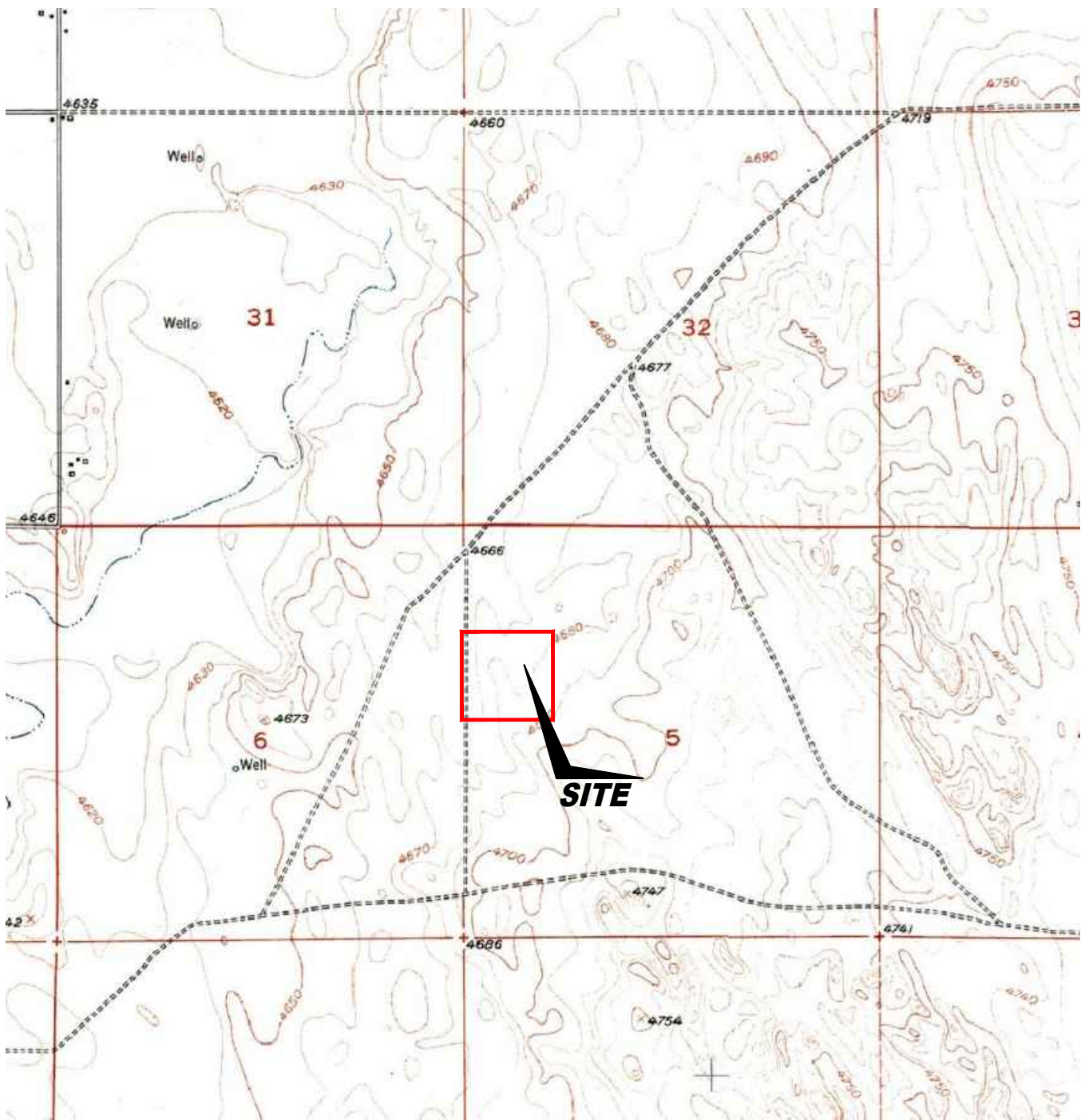
ft. = Feet

bgs = Below ground surface

* Indicates laboratory minimum detection limit in excess of SSL

NA - Not analyzed/Not applicable

Confirmation Resample



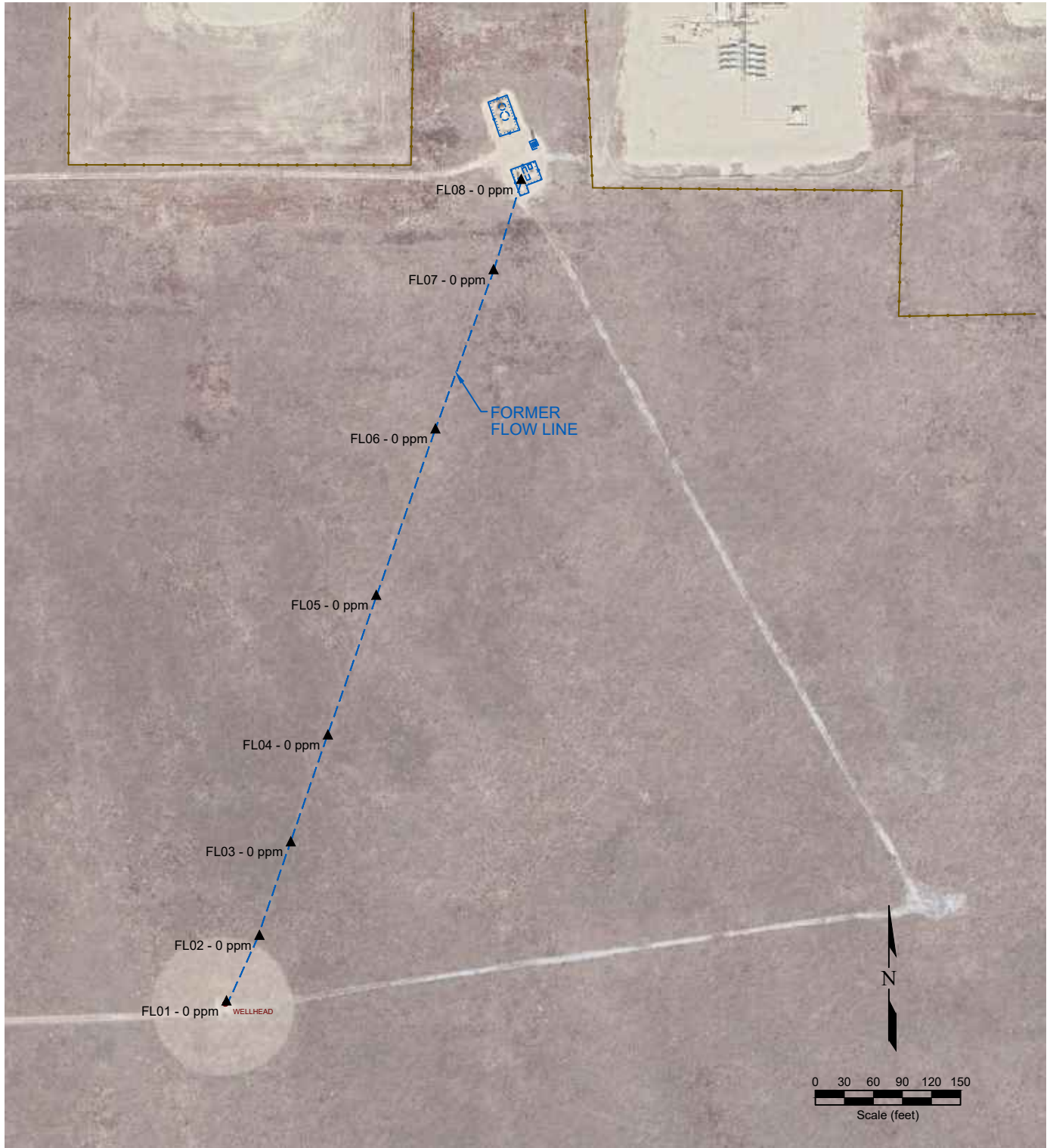
USGS 7.5 MINUTE SERIES (TOPOGRAPHIC)

Figure 1
SITE LOCATION MAP

NOBLE ENERGY INC ~ UPV-5-5H3
 SWNW Sec. 5, T5N, R63W, 6th PM
 Weld County, Colorado
 40.429766°, -104.467816°

Project # C024-072	API # 05-123-18860	Facility #
Date 7/14/25	Remediation # 30272	Filename 24072TFL





LEGEND

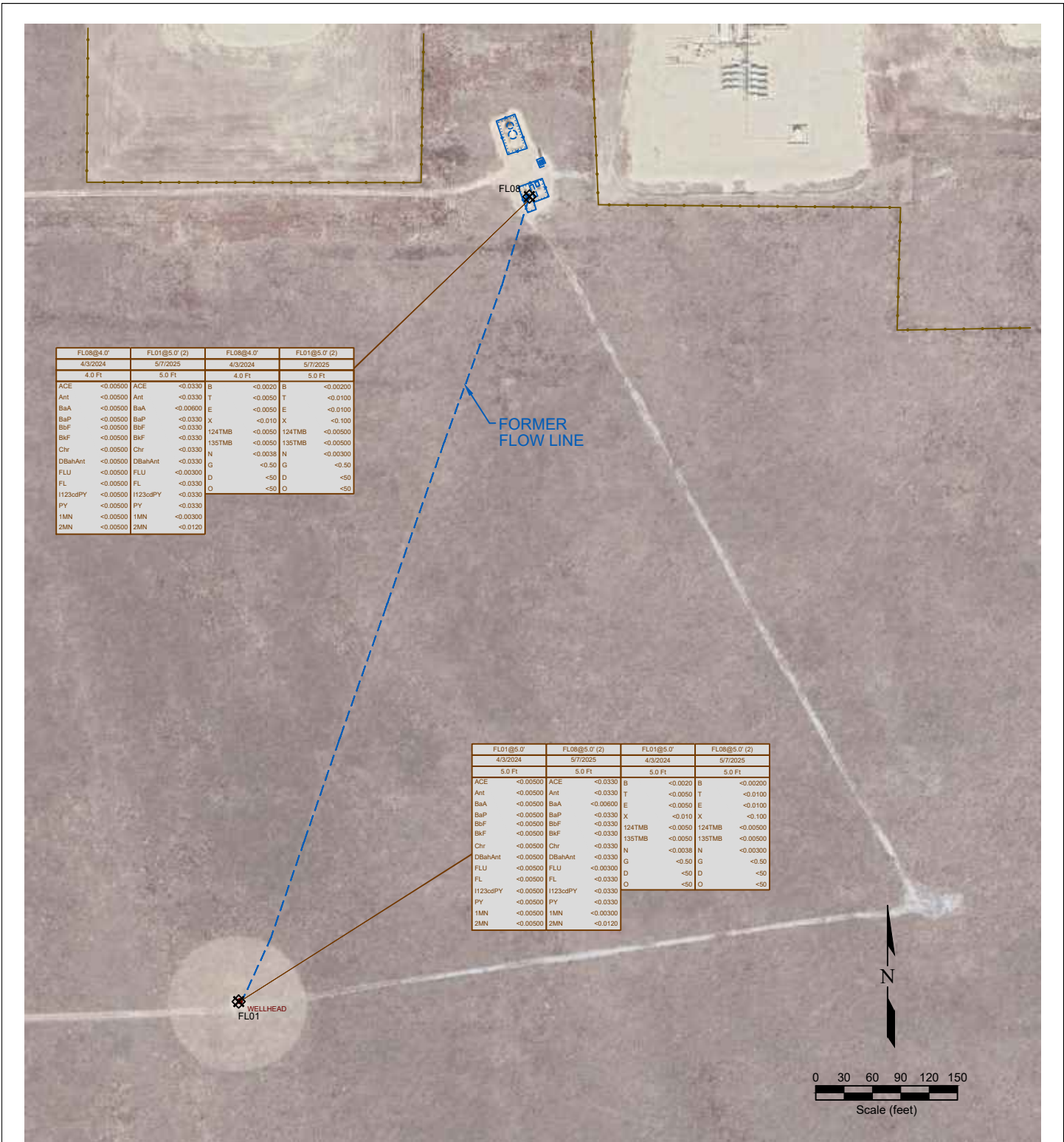
- WELL HEAD LOCATION
- ▲ PID READING LOCATION
- ABOVE GROUND STORAGE TANK
- FORMER FACILITY
- FORMER FLOW LINE
- FENCE LINE
- CONTAINMENT BERM
- CONTAINMENT WALL

**Figure 2
SITE MAP**

NOBLE ENERGY INC ~ UPV-5-5H3
 SWNW Sec. 5, T5N, R63W, 6th PM
 Weld County, Colorado
 40.429766°, -104.467816°

Project No. C024-072	API # 05-123-18860	Facility #
Date 7/14/25	Remediation # 30272	Filename 24072QFL





FL08@4.0'		FL01@5.0' (2)		FL08@4.0'		FL01@5.0' (2)	
4/3/2024		5/7/2025		4/3/2024		5/7/2025	
4.0 Ft		5.0 Ft		4.0 Ft		5.0 Ft	
ACE	<0.00500	ACE	<0.0330	B	<0.0020	B	<0.00200
Ant	<0.00500	Ant	<0.0330	T	<0.0050	T	<0.0100
BaA	<0.00500	BaA	<0.00600	E	<0.0050	E	<0.0100
BaP	<0.00500	BaP	<0.0330	X	<0.010	X	<0.100
BbF	<0.00500	BbF	<0.0330	124TMB	<0.0050	124TMB	<0.00500
BkF	<0.00500	BkF	<0.0330	135TMB	<0.0050	135TMB	<0.00500
Chr	<0.00500	Chr	<0.0330	N	<0.0038	N	<0.00300
DBahAnt	<0.00500	DBahAnt	<0.0330	G	<0.50	G	<0.50
FLU	<0.00500	FLU	<0.00300	D	<50	D	<50
FL	<0.00500	FL	<0.0330	O	<50	O	<50
1123cdPY	<0.00500	1123cdPY	<0.0330				
PY	<0.00500	PY	<0.0330				
1MN	<0.00500	1MN	<0.00300				
2MN	<0.00500	2MN	<0.0120				

FL01@5.0'		FL08@5.0' (2)		FL01@5.0'		FL08@5.0' (2)	
4/3/2024		5/7/2025		4/3/2024		5/7/2025	
5.0 Ft		5.0 Ft		5.0 Ft		5.0 Ft	
ACE	<0.00500	ACE	<0.0330	B	<0.0020	B	<0.00200
Ant	<0.00500	Ant	<0.0330	T	<0.0060	T	<0.0100
BaA	<0.00500	BaA	<0.00600	E	<0.0050	E	<0.0100
BaP	<0.00500	BaP	<0.0330	X	<0.010	X	<0.100
BbF	<0.00500	BbF	<0.0330	124TMB	<0.00500	124TMB	<0.00500
BkF	<0.00500	BkF	<0.0330	135TMB	<0.0050	135TMB	<0.00500
Chr	<0.00500	Chr	<0.0330	N	<0.0038	N	<0.00300
DBahAnt	<0.00500	DBahAnt	<0.0330	G	<0.50	G	<0.50
FLU	<0.00500	FLU	<0.00300	D	<50	D	<50
FL	<0.00500	FL	<0.0330	O	<50	O	<50
1123cdPY	<0.00500	1123cdPY	<0.0330				
PY	<0.00500	PY	<0.0330				
1MN	<0.00500	1MN	<0.00300				
2MN	<0.00500	2MN	<0.0120				

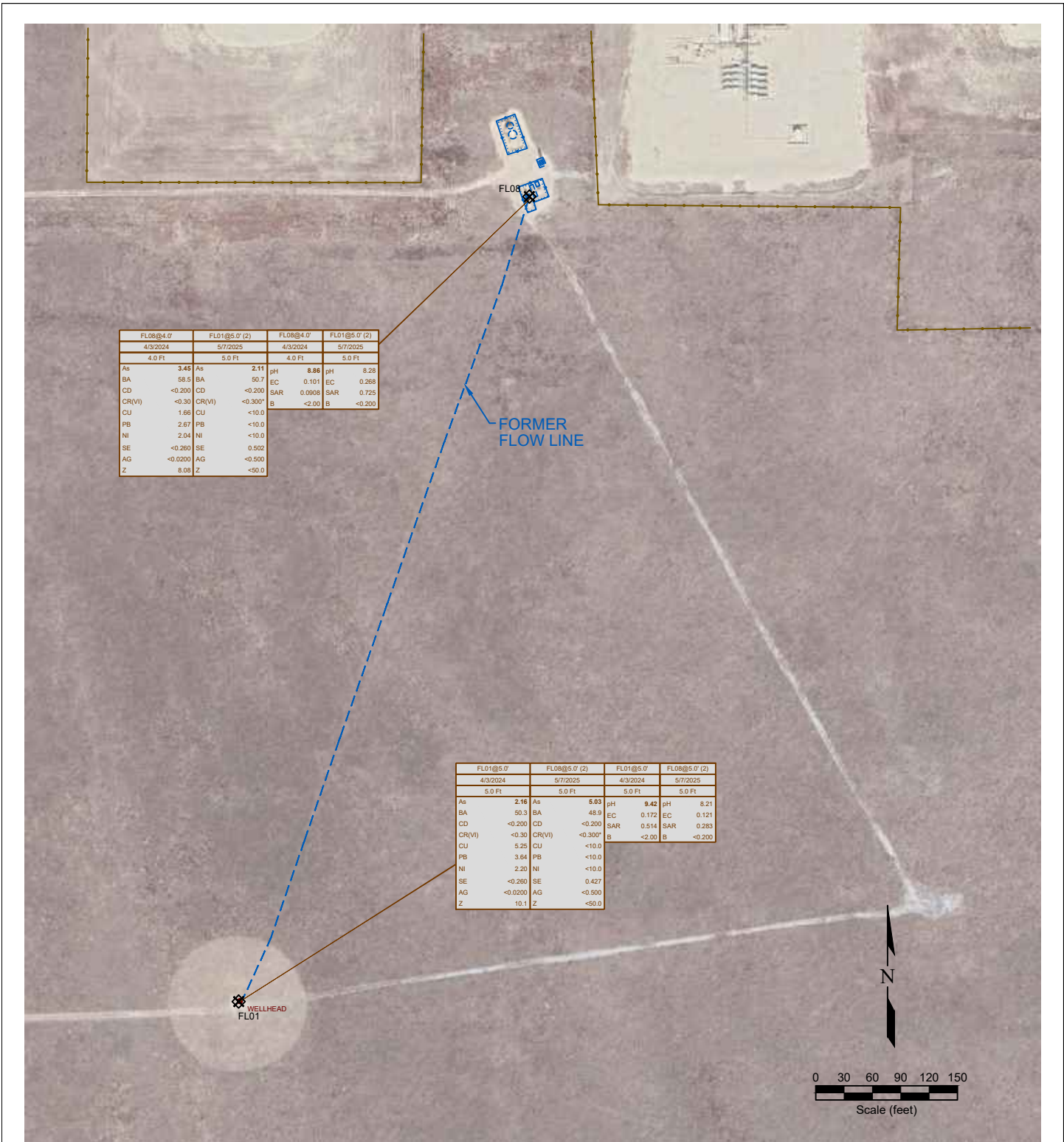
LEGEND

- WELL HEAD LOCATION
- ABOVE GROUND STORAGE TANK
- ⊗ SOIL SAMPLE LOCATION
- FORMER FLOW LINE
- FENCE LINE
- ||||| CONTAINMENT BERM
- CONTAINMENT WALL

SAMPLE ID	SAMPLE ID	SAMPLE ID	SAMPLE ID
DATE	DATE	DATE	DATE
DEPTH	DEPTH	DEPTH	DEPTH
ACE	<0.00500	D	<0.0020
Ant	<0.00500	T	<0.0050
BaA	<0.00500	E	<0.0050
BaP	<0.00500	X	<0.010
BbF	<0.00500	124TMB	<0.0050
BkF	<0.00500	135TMB	<0.0050
Chr	<0.00500	N	<0.0038
DBahAnt	<0.00500	G	<0.50
FLU	<0.00500	D	<50
FL	<0.00500	O	<50
1123cdPY	<0.00500		
PY	<0.00500		
1MN	<0.00500		
2MN	<0.00500		

Figure 3
ORGANIC SOIL CHEMISTRY MAP
NOBLE ENERGY INC ~ UPV-5-5H3
 SWNW Sec. 5, T5N, R63W, 6th PM
 Weld County, Colorado
 40.429766°, -104.467816°

Project No. C024-072	API # 05-123-18860	Facility #
Date 7/14/25	Remediation # 30272	Filename 24072QFL



LEGEND


- WELL HEAD LOCATION
- ABOVE GROUND STORAGE TANK
- ⊗ SOIL SAMPLE LOCATION
- FORMER FACILITY
- FORMER FLOW LINE
- FENCE LINE
- CONTAINMENT BERM
- CONTAINMENT WALL

SAMPLE	SAMPLE ID	SAMPLE DATE	SAMPLE ID	SAMPLE DATE
As	ARSENIC (mg/kg)	4/3/2024	As	ARSENIC (mg/kg)
BA	BARIUM (mg/kg)	4/3/2024	BA	BARIUM (mg/kg)
CD	CADMIUM (mg/kg)	4/3/2024	CD	CADMIUM (mg/kg)
CR(VI)	CHROMIUM (mg/kg)	4/3/2024	CR(VI)	CHROMIUM (mg/kg)
CU	COPPER (mg/kg)	4/3/2024	CU	COPPER (mg/kg)
PB	LEAD (mg/kg)	4/3/2024	PB	LEAD (mg/kg)
NI	NICKEL (mg/kg)	4/3/2024	NI	NICKEL (mg/kg)
SE	SELENIUM (mg/kg)	4/3/2024	SE	SELENIUM (mg/kg)
AG	SILVER (mg/kg)	4/3/2024	AG	SILVER (mg/kg)
Z	ZINC (mg/kg)	4/3/2024	Z	ZINC (mg/kg)

Figure 4
METALS AND INORGANIC SOIL CHEMISTRY MAP

NOBLE ENERGY INC ~ UPV-5-5H3
 SWNW Sec. 5, T5N, R63W, 6th PM
 Weld County, Colorado
 40.429766°, -104.467816°

Project No. C024-072	API # 05-123-18860	Facility #
Date 7/14/25	Remediation # 30272	Filename 24072QFL



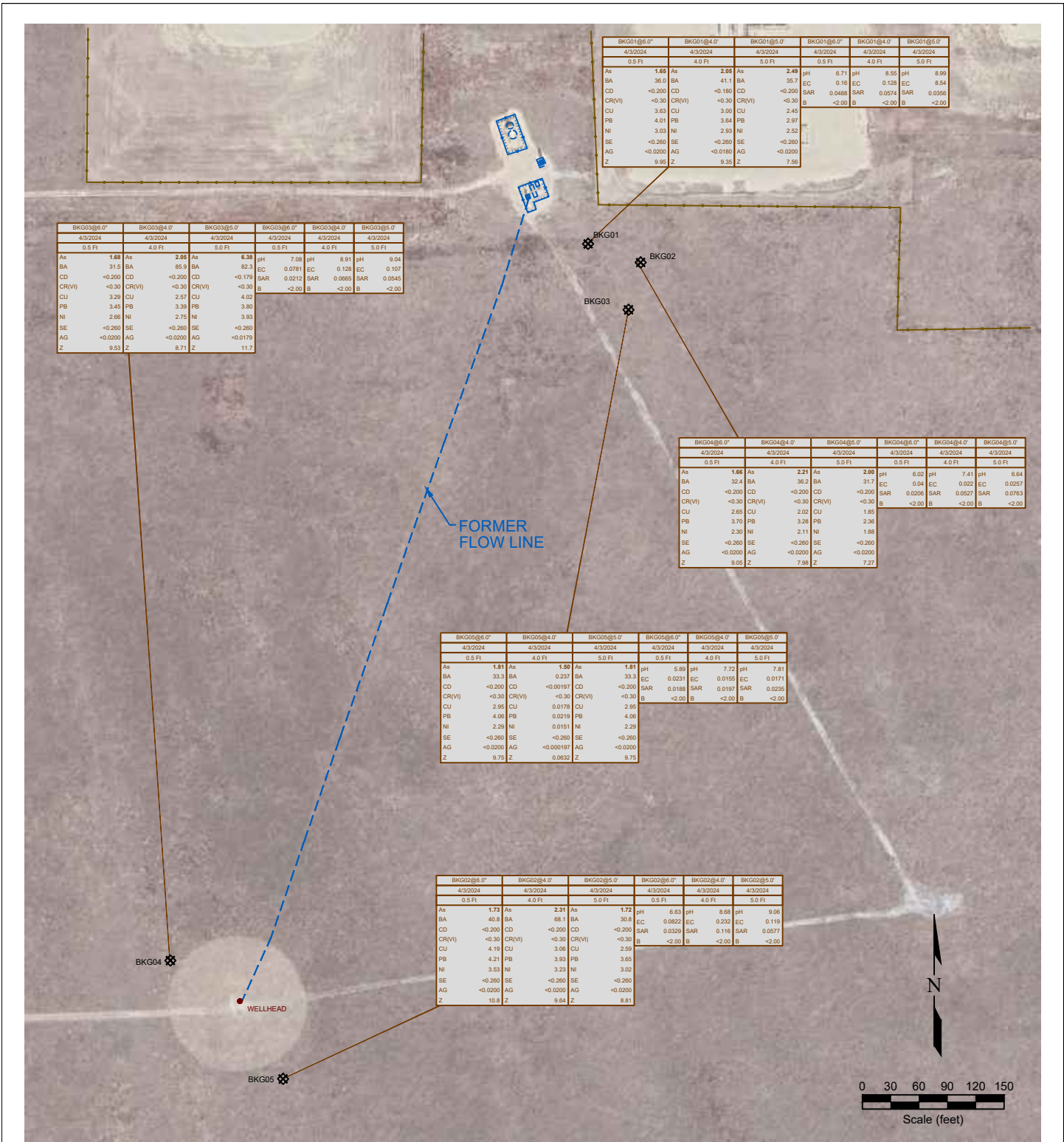
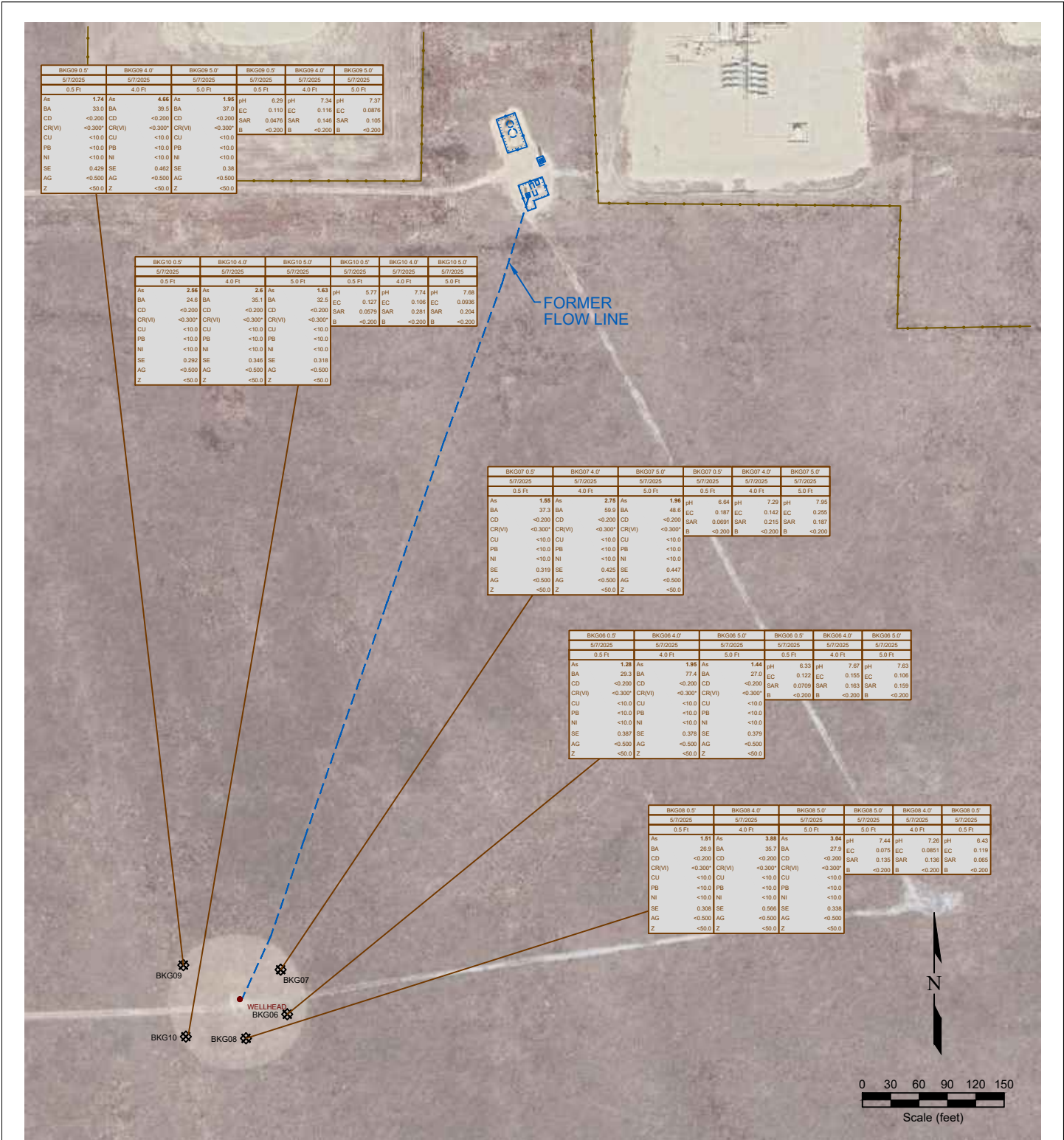


Figure 5
BACKGROUND SAMPLE SOIL CHEMISTRY MAP

NOBLE ENERGY INC ~ UPV-5-5H3
SWNW Sec. 5, T5N, R63W, 6th PM
Weld County, Colorado
40.429766°, -104.467816°

Project No. C024-072	API # 05-123-18860	Facility #
Date 7/14/25	Remediation # 30272	Filename 24072QFL





LEGEND

- WELL HEAD LOCATION
- ABOVE GROUND STORAGE TANK
- ⊗ SOIL SAMPLE LOCATION
- FORMER FACILITY
- FORMER FLOW LINE
- FENCE LINE
- CONTAINMENT BERM
- CONTAINMENT WALL

SAMPLE ID	DATE SAMPLED	DEPTH (ft)	PARAMETER	VALUE
BKG09 0.5'	5/7/2025	0.5 Ft	As	1.74
BKG09 4.0'	5/7/2025	4.0 Ft	As	4.66
BKG09 5.0'	5/7/2025	5.0 Ft	As	1.95
BKG09 0.5'	5/7/2025	0.5 Ft	pH	6.29
BKG09 4.0'	5/7/2025	4.0 Ft	pH	7.34
BKG09 5.0'	5/7/2025	5.0 Ft	pH	7.37
BKG09 0.5'	5/7/2025	0.5 Ft	BA	33.0
BKG09 4.0'	5/7/2025	4.0 Ft	BA	39.5
BKG09 5.0'	5/7/2025	5.0 Ft	BA	37.0
BKG09 0.5'	5/7/2025	0.5 Ft	CD	<-0.200
BKG09 4.0'	5/7/2025	4.0 Ft	CD	<-0.200
BKG09 5.0'	5/7/2025	5.0 Ft	CD	<-0.200
BKG09 0.5'	5/7/2025	0.5 Ft	CR(VI)	<-0.300*
BKG09 4.0'	5/7/2025	4.0 Ft	CR(VI)	<-0.300*
BKG09 5.0'	5/7/2025	5.0 Ft	CR(VI)	<-0.300*
BKG09 0.5'	5/7/2025	0.5 Ft	CU	<-10.0
BKG09 4.0'	5/7/2025	4.0 Ft	CU	<-10.0
BKG09 5.0'	5/7/2025	5.0 Ft	CU	<-10.0
BKG09 0.5'	5/7/2025	0.5 Ft	PB	<-10.0
BKG09 4.0'	5/7/2025	4.0 Ft	PB	<-10.0
BKG09 5.0'	5/7/2025	5.0 Ft	PB	<-10.0
BKG09 0.5'	5/7/2025	0.5 Ft	NI	<-10.0
BKG09 4.0'	5/7/2025	4.0 Ft	NI	<-10.0
BKG09 5.0'	5/7/2025	5.0 Ft	NI	<-10.0
BKG09 0.5'	5/7/2025	0.5 Ft	SE	0.425
BKG09 4.0'	5/7/2025	4.0 Ft	SE	0.465
BKG09 5.0'	5/7/2025	5.0 Ft	SE	0.36
BKG09 0.5'	5/7/2025	0.5 Ft	AG	<-0.500
BKG09 4.0'	5/7/2025	4.0 Ft	AG	<-0.500
BKG09 5.0'	5/7/2025	5.0 Ft	AG	<-0.500
BKG09 0.5'	5/7/2025	0.5 Ft	Z	<-50.0
BKG09 4.0'	5/7/2025	4.0 Ft	Z	<-50.0
BKG09 5.0'	5/7/2025	5.0 Ft	Z	<-50.0

**Figure 6
BACKGROUND SAMPLE SOIL CHEMISTRY MAP**

NOBLE ENERGY INC ~ UPV-5-5H3
 SWNW Sec. 5, T5N, R63W, 6th PM
 Weld County, Colorado
 40.429766°, -104.467816°

Project No. C024-072	API # 05-123-18860	Facility #
Date 7/14/25	Remediation # 30272	Filename 24072QFL

REMONT ENVIRONMENTAL

Photo Log



Description:

#1A - UPV 5-5H3 (Flowline) - Wellhead Tie-in - FL01@5.0' - No Impacts Noted - PID: 0.0ppm

Photo Log



Description:

#1B - UPV 5-5H3 (Flowline) - FL02@4.0' - No Impacts Noted - PID: 0.0ppm



Description:

#1C - UPV 5-5H3 (Flowline) - FL03@5.0' - No Impacts Noted - PID: 0.0ppm



Description:

#1D - UPV 5-5H3 (Flowline) - FL04@5.0' - No Impacts Noted - PID: 0.0ppm



Description:

#1E - UPV 5-5H3 (Flowline) - FL05@5.0' - No Impacts Noted - PID: 0.0ppm

Photo Log



Description:

#1F - UPV 5-5H3 (Flowline) - FL06@4.0' - No Impacts Noted - PID: 0.0ppm

Photo Log



Description:

#1G - UPV 5-5H3 (Flowline) - Separator Tie-in - FL08@5.0' - No Impacts Noted - PID: 0.0ppm



Description:

#2A - UPV 5-5H3 (Flowline) - 1st Local Background Sample Bore - BKG01 - Samples Collected at 0.5ft, 4.0ft and 5.0ft



Description:

#2B - UPV 5-5H3 (Flowline) - 2nd Local Background Sample Bore - BKG02 - Samples Collected at 0.5ft, 4.0ft and 5.0ft



Description:

#2C - UPV 5-5H3 (Flowline) - 3rd Local Background Sample Bore - BKG03 - Samples Collected at 0.5ft, 4.0ft and 5.0ft

Photo Log



Description:

#2D - UPV 5-5H3 (Flowline) - 4th Local Background Sample Bore - BKG04 - Samples Collected at 0.5ft, 4.0ft and 5.0ft

Photo Log



Description:

#2E - UPV 5-5H3 (Flowline) - 5th Local Background Sample Bore - BKG05 - Samples Collected at 0.5ft, 4.0ft and 5.0ft