



**RADIAL
BOND
LOG**

Company EVERGREEN NATURAL RESOURCES
 Well WESTON 24-23 AWD
 Field PURGATOIRE
 County LAS ANIMAS
 State CALORADO

Company EVERGREEN NATURAL RESOURCES
 Well WESTON 24-23 AWD
 Field PURGATOIRE
 County LAS ANIMAS State CALORADO

Location: API #: Other Services
 Permanent Datum SEC 23 TWP 33S RGE 67W Elevation
 Log Measured From GROUND LEVEL Elevation 7046 K.B. 7057
 Drilling Measured From K.B. 11 FEET D.F. 7055
 KB G.L. 7046

Date	7/7/25		
Run Number	1		
Depth Driller	5629		
Depth Logger	4850		
Bottom Logged Interval	4848		
Top Log Interval	3600		
Open Hole Size	7 7/8		
Type Fluid	WATER		
Density / Viscosity			
Max. Recorded Temp.			
Estimated Cement Top			
Time Well Ready	ROA		
Time Logger on Bottom	12:00 PM		
Equipment Number	641		
Location	LIBERAL		
Recorded By	D.LANIER		
Witnessed By	J.HARRIS		

Run Number	Borehole Record		Tubing Record				
	Bit	From	To	Size	Weight	From	To
Casing Record							
Surface String							
Prot. String							
Production String							
Liner							

<<< Fold Here >>>

All interpretations are opinions based on inferences from electrical or other measurements and we cannot and do not guarantee the accuracy or correctness of any interpretation, and we shall not, except in the case of gross or willful negligence on our part, be liable or responsible for any loss, costs, damages, or expenses incurred or sustained by anyone resulting from any interpretation made by any of our officers, agents or employees. These interpretations are also subject to our general terms and conditions set out in our current Price Schedule.

Comments



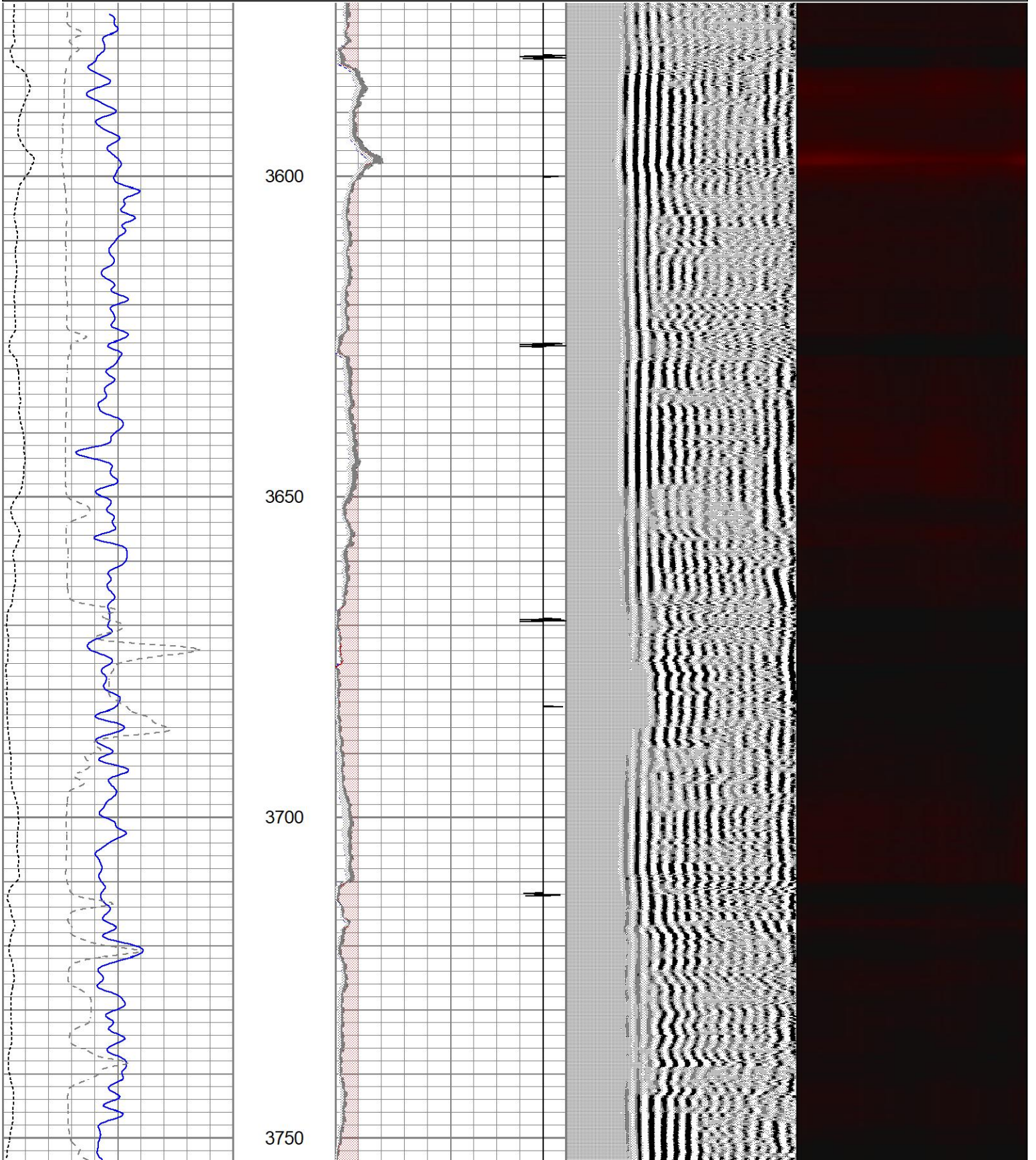
MAIN SECTION

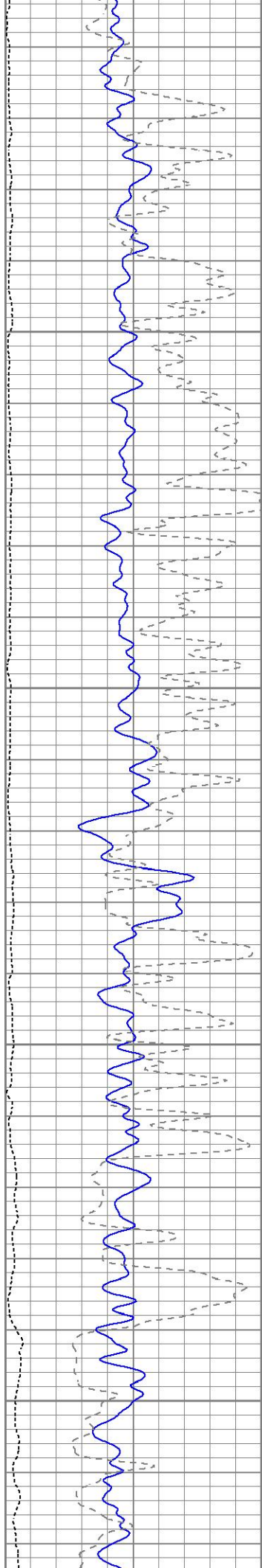
Database File evergreencbl_05302025.db
 Dataset Pathname pass1.16
 Presentation Format sector
 Dataset Creation Mon Jul 07 13:25:51 2025
 Charted by Depth in Feet scaled 1:240

0	GR (GAPI)	150
200	TT3FT (usec)	700
0	AMP3FT (mV)	100

0	AMPMAX	100
0	AMPAVG	100
0	AMPMIN	100
18	CCL	-2

200 WWF5FT (usec) 1200 1 SECTORS 8



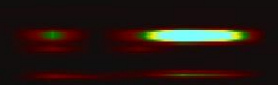
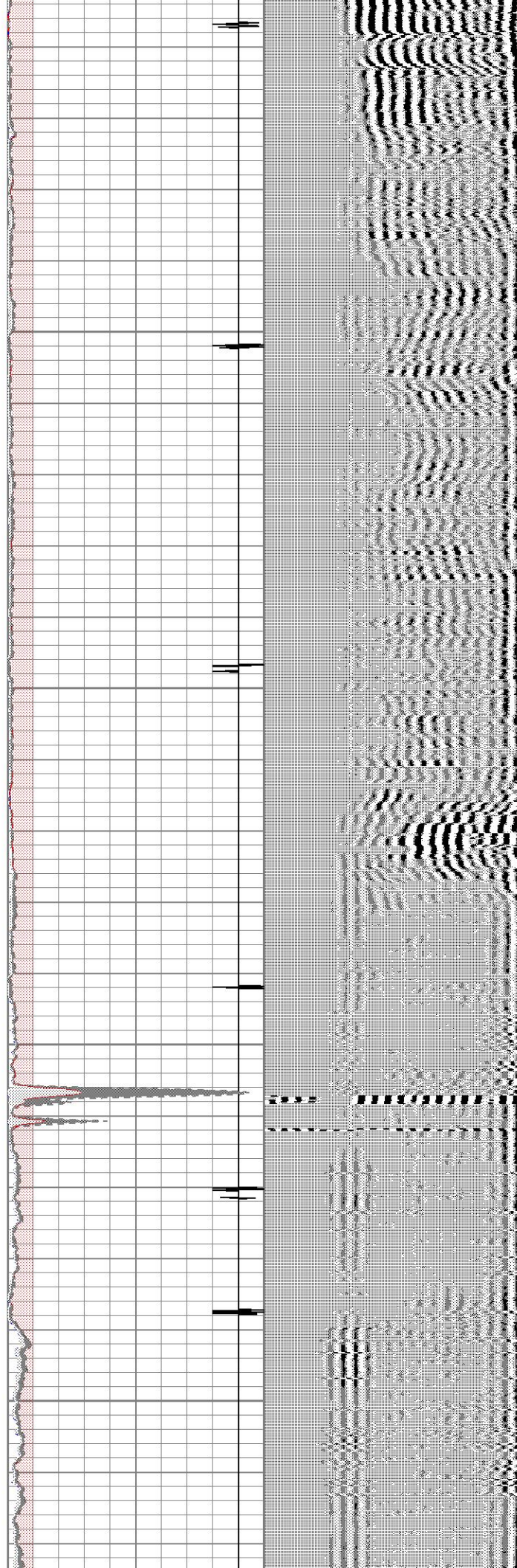


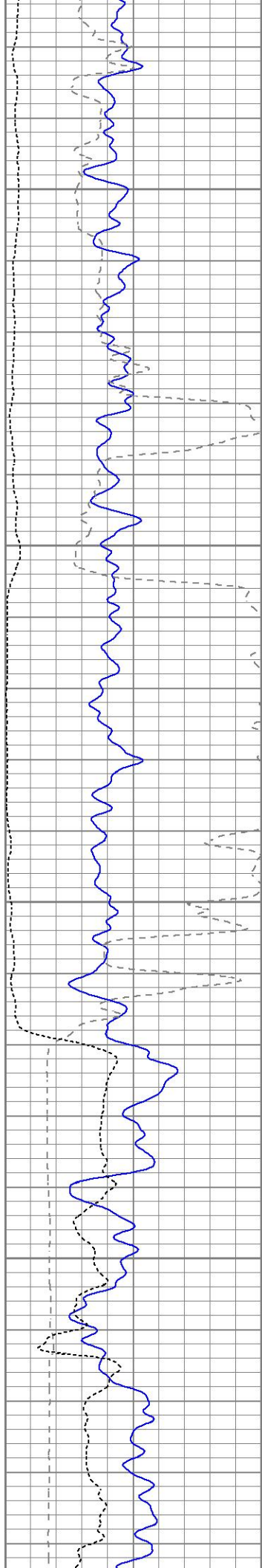
3800

3850

3900

3950



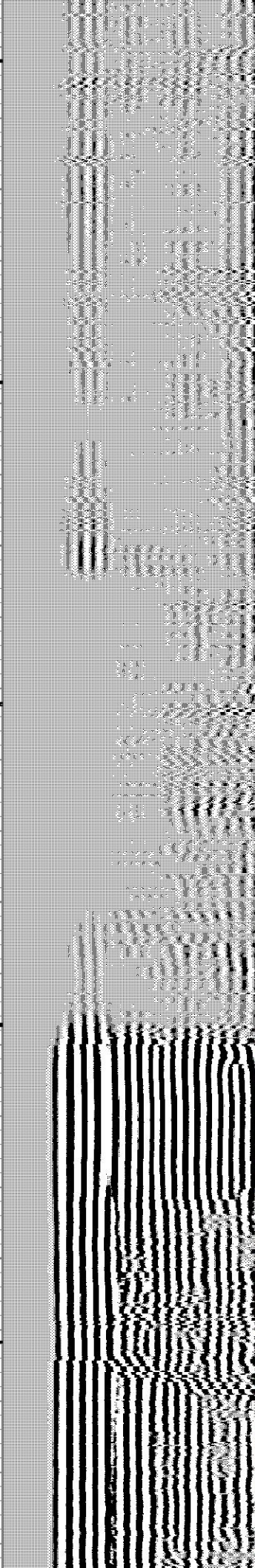
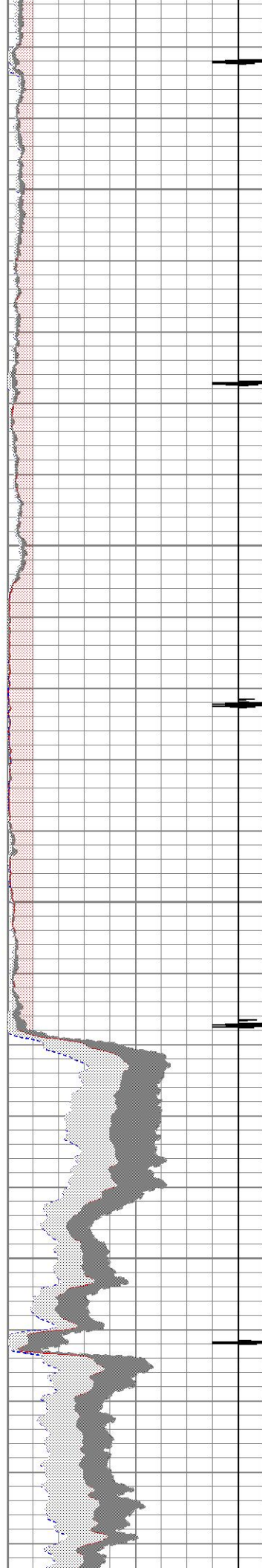


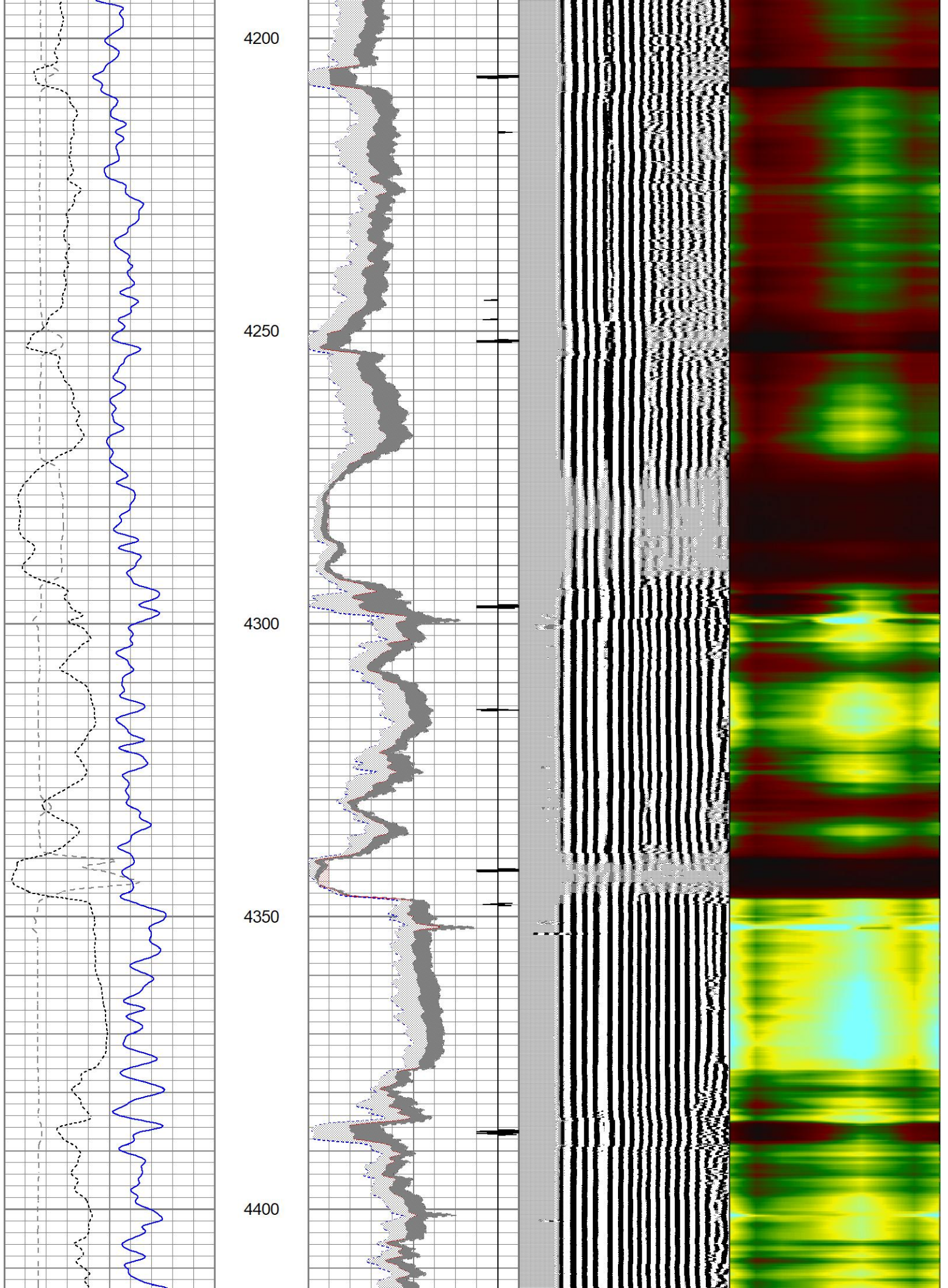
4000

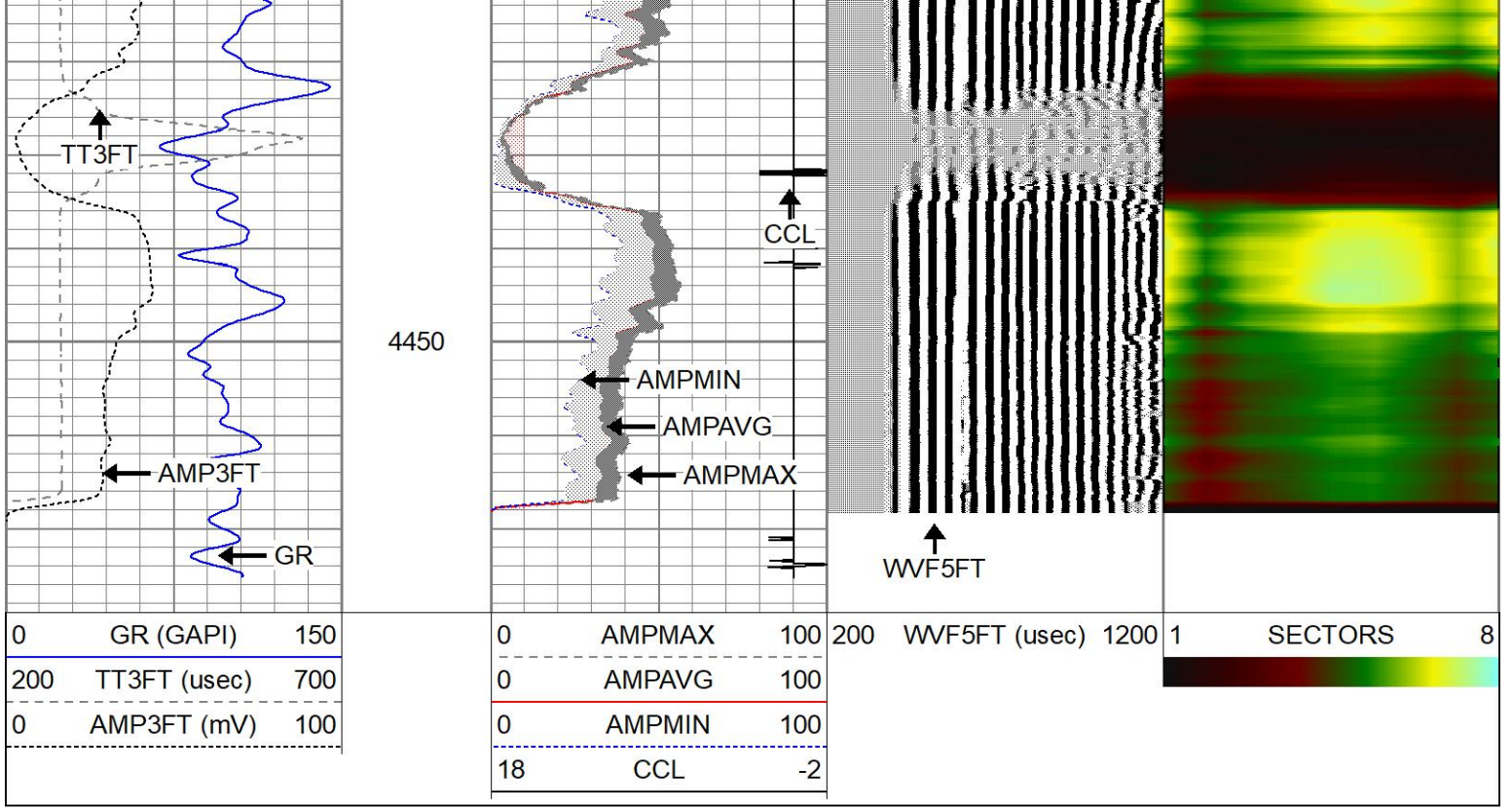
4050

4100

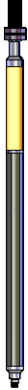
4150







Sensor	Offset (ft)	Schematic	Description	Length (ft)	O.D. (in)	Weight (lb)	
			CENT-rub	0.33	1.75	0.80	
			CENT-275 2 3/4" Centralizer	2.94	2.75	10.00	
			CHD-None (1)	1.00	1.69	10.00	
WVFS8	11.69			SCBL-ProbeRadial (080321) Probe 2 3/4 RadII	8.75	2.75	106.50
WVFS7	11.69						
WVFS6	11.69						
WVFS5	11.69						
WVFS4	11.69						
WVFS3	11.69						
WVFS2	11.69						
WVFS1	11.69						
WVF3FT	11.69						
WVF5FT	10.69						
WVFCAL	7.44						
			CENT-275 2 3/4" Centralizer	2.94	2.75	10.00	

CCL	3.67		CCL-Probe (060528) Probe 2 3/4"	1.42	2.75	7.50
GR	0.89		GR-P2 (060528) Sensor in Bottom	3.08	2.75	20.00

Dataset: evergreencbl_05302025.db: field/well/run1/pass1.16
 Total length: 20.46 ft
 Total weight: 164.80 lb
 O.D.: 2.75 in