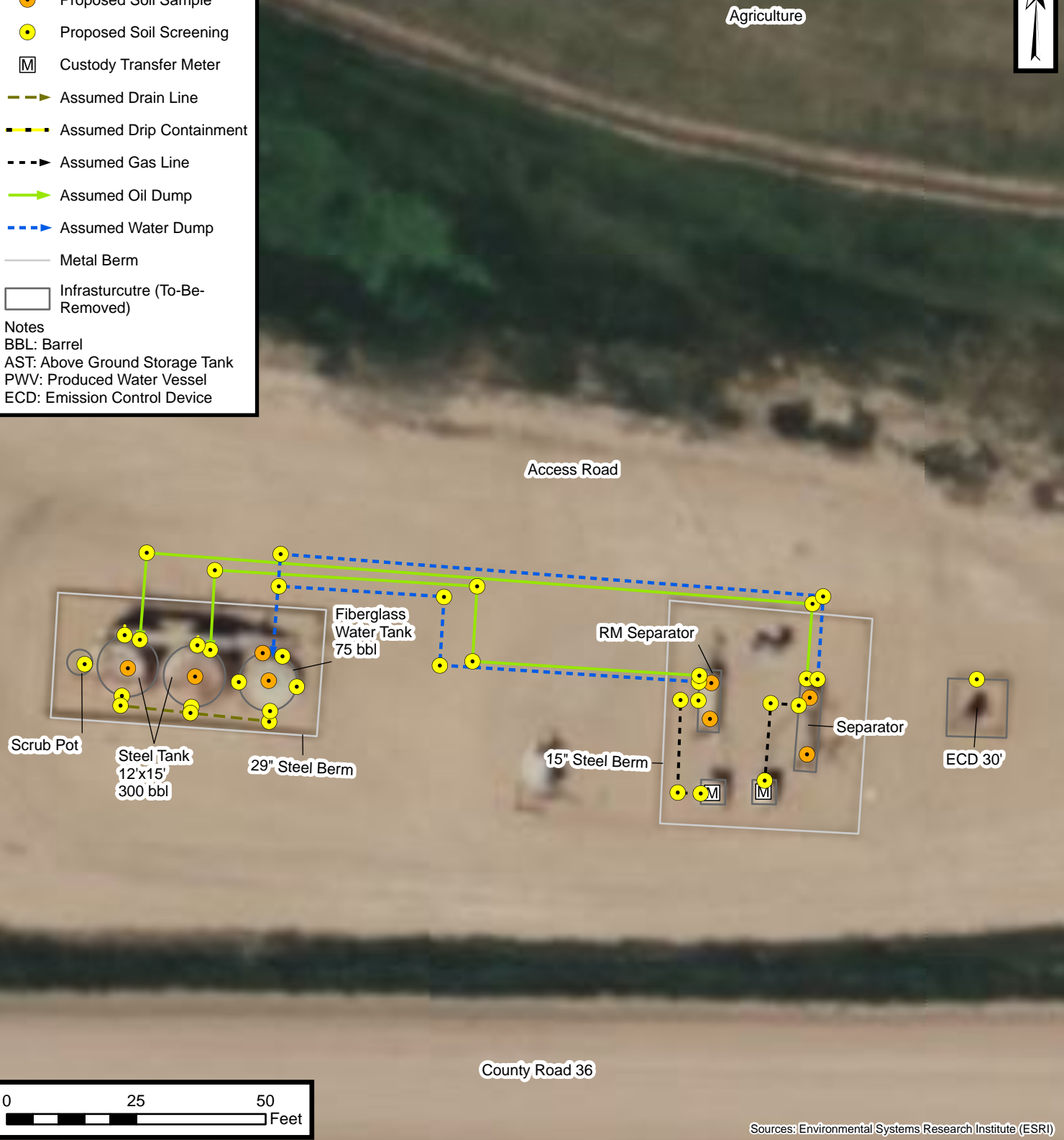


Legend

- Proposed Soil Sample
- Proposed Soil Screening
- M Custody Transfer Meter
- ▶ Assumed Drain Line
- - -▶ Assumed Drip Containment
- - -▶ Assumed Gas Line
- ▶ Assumed Oil Dump
- - -▶ Assumed Water Dump
- Metal Berm
- Infrastructure (To-Be-Removed)

Notes
 BBL: Barrel
 AST: Above Ground Storage Tank
 PWV: Produced Water Vessel
 ECD: Emission Control Device



Default Folder: C:\Users\Margan Tai\OneDrive - ENSOLUM, LLC\Ensolium\GIS\0 - Projects\Kerr-McGee Oil & Gas Onshore, LP\09A14171005 - Bell12-5, Creason11-5 Facility



Proposed Facility Closure and Soil Sampling Locations Map

Bell12-5, Creason11-5 Facility
 Kerr-McGee Oil & Gas Onshore, LP
 SWSW SEC 5-T3N-R66W
 Weld County, CO

Project Number: 09A14171005

FIGURE

2