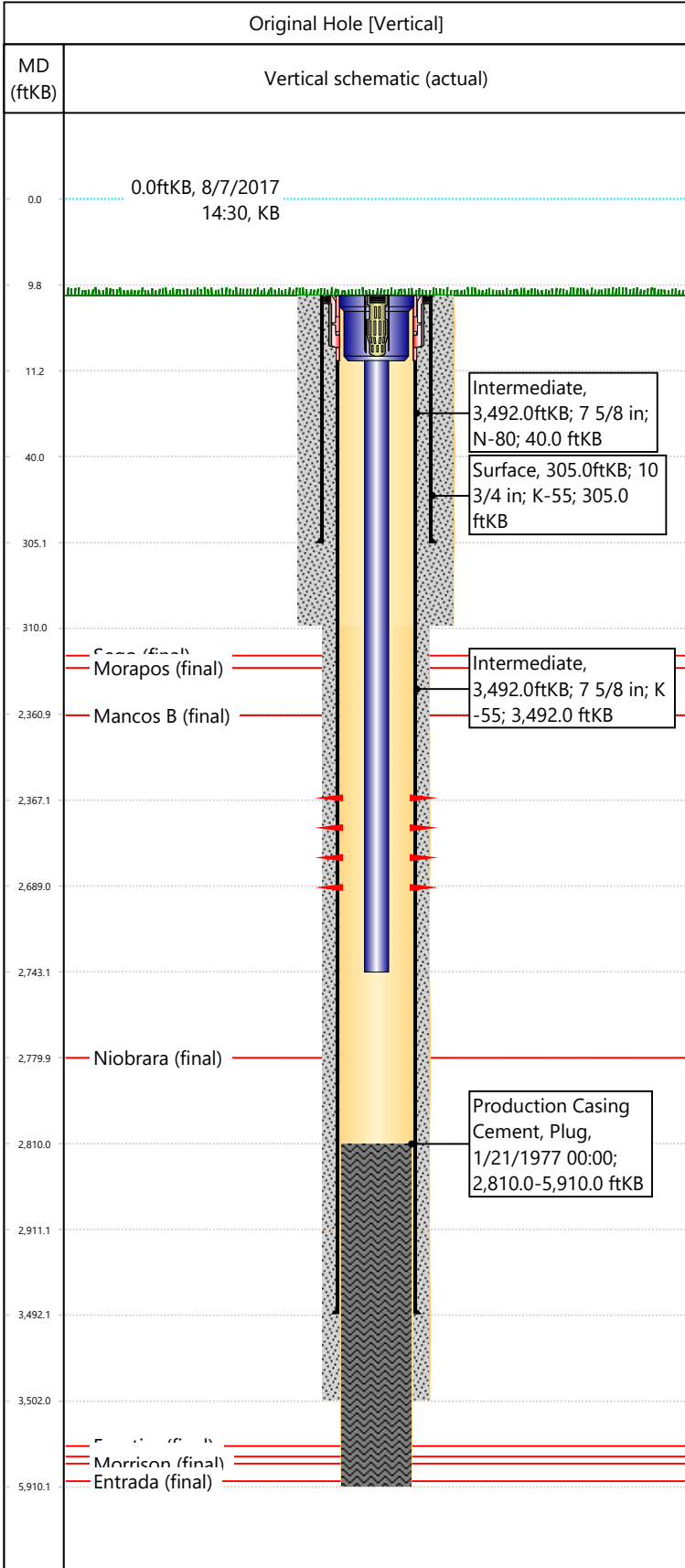


Well Name: DOUGLAS CK SOUTH 7313

API/UWI 05103078950000	Surface Legal Location NENE-S2-T4S-R102W-6PM	Field Name South Douglas Creek	License #	State/Province CO	Well Configuration Type Vertical
Original KB Elevation (ft) 6,485	KB-Tubing Head Distance (ft) 10	Spud Date 1/5/1977 00:00	Rig Release Date 1/19/1977 00:00	PBTD (All) (KB) Original Hole - 2,810.0	Total Depth All (TVD) (KB) Original Hole - 5,910.0



Section Description	Size (in)	Btm Depth (ftKB)
Production	6 3/4	
Intermediate	9 7/8	
Surface	14 3/4	
Surface	14 3/4	310.0
Intermediate	9 7/8	3,502.0
Production	6 3/4	5,910.0

Formation Name	Final Top MD (ftKB)
Frontier	4,793.0
Dakota	5,082.0
Morrison	5,263.0
Entrada	5,782.0
Sego	966.0
Niobrara	2,780.0
Morapos	1,269.0
Mancos B	2,361.0

Csg Des	OD (in)	Wt/Len (lb/ft)	Grade	Set Depth (ftKB)
Production				
Surface	10 3/4	40.50	K-55	305.0
Intermediate	7 5/8	26.40	K-55	3,492.0

Date	Top (ftKB)	Btm (ftKB)	Linked Zone
4/13/1977	2367	2689	Mancos B, Original Hole

Item Des	Icon	Jts	OD (in)	Wt (lb/ft)	Grade	Len (ft)
Tubing Hanger		1	6.97	4.70	J-55	1
Tubing		88	2 3/8	4.70	J-55	2732

Item Des	Icon	Jts	OD (in)	Wt (lb/ft)	Grade	Len (ft)

Des	Icon	OD (in)	Top (ftKB)	Btm (ftKB)	Run Date	Pull Date

Description	Proposed/Actual Run	Type	Top Depth (ftKB)
Surface Casing Cement	Actual	Casing	10.0
Intermediate 1 Casing Cement	Actual	Casing	10.0
Production Casing Cement	Actual	Plug	2,810.0